

ACER Model:C301 -- FM Body SAR

Generic Twin Phantom; Flat Section; Probe: ET3DV5 - SN1370 -- Probe Cal Date 02/00

Med. Parameters 835 MHz Muscle: $\sigma = 0.95$ mho/m $\epsilon_r = 56.2$ $\rho = 1.00$ g/cm³; Antenna Position -- In; Crest Factor 1.0

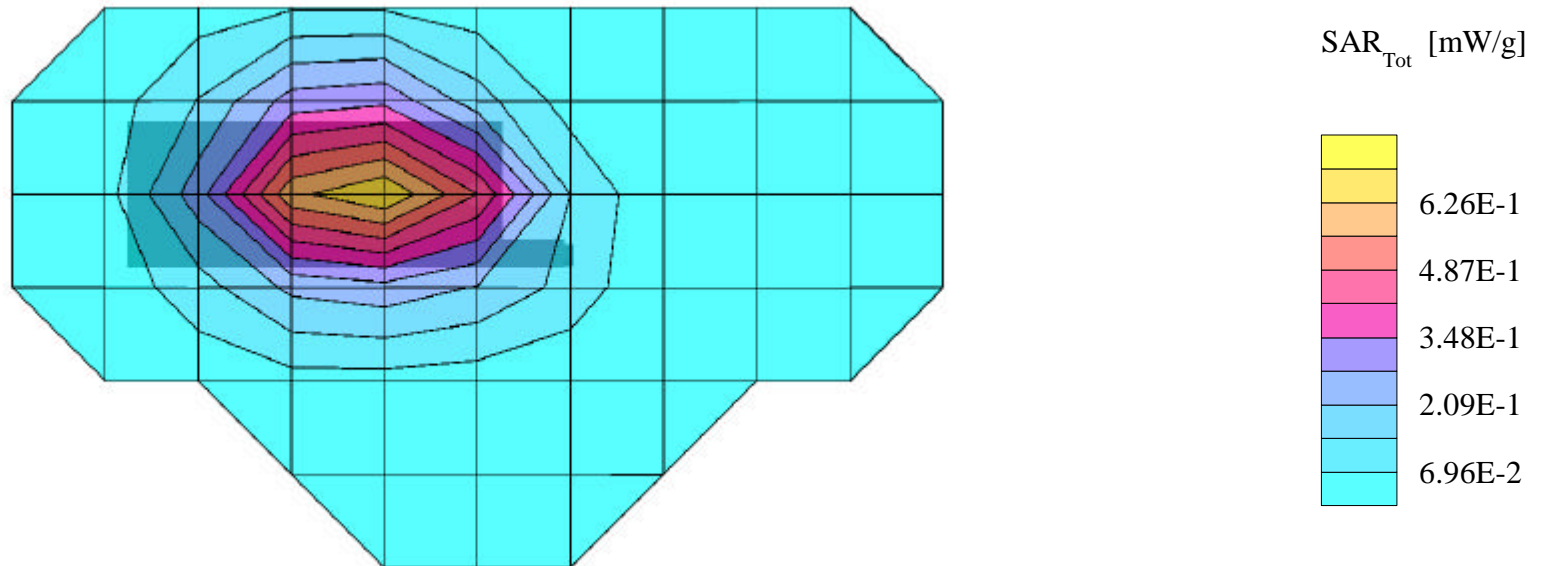
SAR (1g): 0.682 mW/g, SAR (10g): 0.475 mW/g

ACER Dual-Band Model:C301

FM Mode, Ch.0991 [824.04MHz]

Conducted Power = 26.0dBm; Spacing = 2.5cm from flat phantom to phone, no beltclip/holster

Test Date -- 04-11-2000



ACER Model:C301 -- FM Body SAR

Generic Twin Phantom; Flat Section; Probe: ET3DV5 - SN1370 -- Probe Cal Date 02/00

Med. Parameters 835 MHz Muscle: $\sigma = 0.95$ mho/m $\epsilon_r = 56.2$ $\rho = 1.00$ g/cm³; Antenna Position -- Out; Crest Factor 1.0

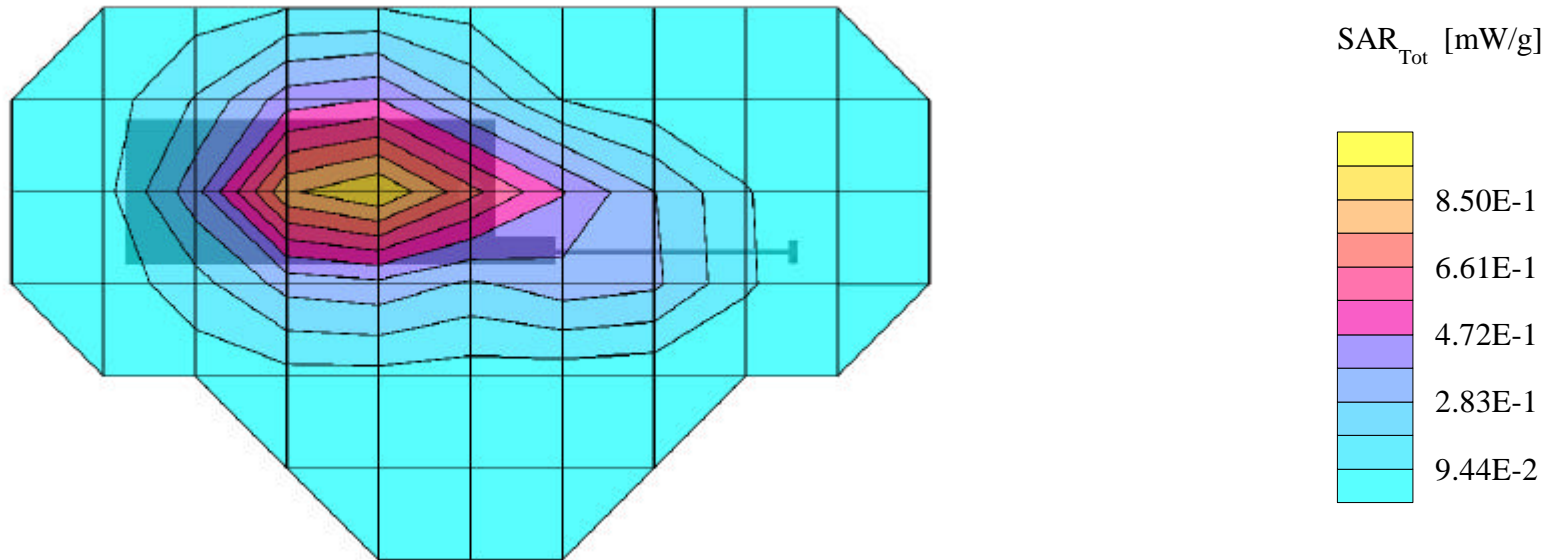
SAR (1g): 0.921 mW/g, SAR (10g): 0.640 mW/g

ACER Dual-Band Model:C301

FM Mode, Ch.0991 [824.04MHz]

Conducted Power = 26.0dBm; Spacing = 2.5cm from flat phantom to phone, no beltclip/holster

Test Date -- 04-11-2000



ACER Model:C301 -- FM Body SAR

Generic Twin Phantom; Flat Section; Probe: ET3DV5 - SN1370 -- Probe Cal Date 02/00

Med. Parameters 835 MHz Muscle: $\sigma = 0.95$ mho/m $\epsilon_r = 56.2$ $\rho = 1.00$ g/cm³; Antenna Position -- In; Crest Factor 1.0

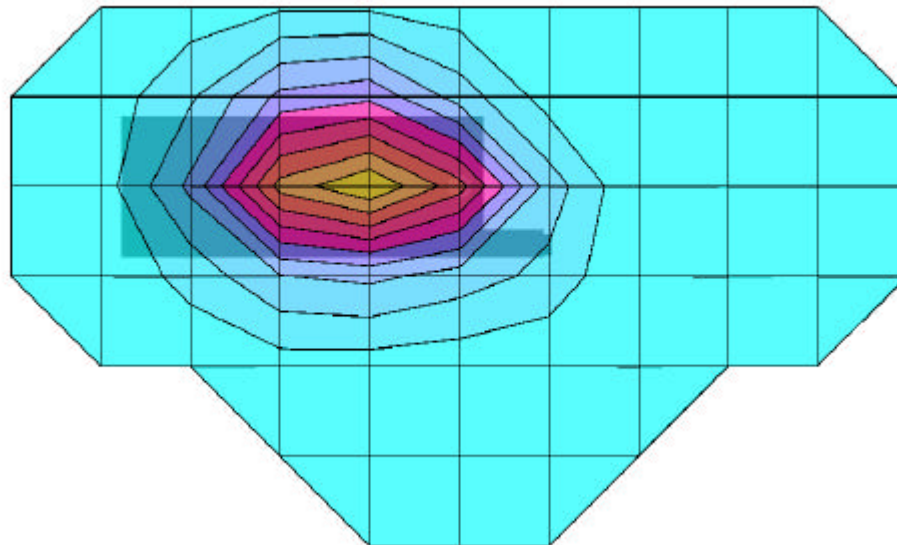
SAR (1g): 0.907 mW/g, SAR (10g): 0.628 mW/g

ACER Dual-Band Model:C301

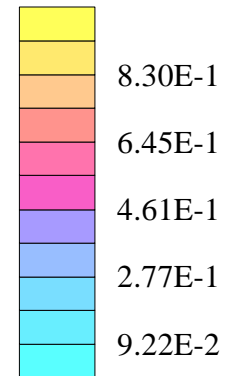
FM Mode, Ch.0383 [836.49MHz]

Conducted Power = 26.0dBm; Spacing = 2.5cm from flat phantom to phone, no beltclip/holster

Test Date -- 04-11-2000



SAR_{Tot} [mW/g]



ACER Model:C301 -- FM Body SAR

Generic Twin Phantom; Flat Section; Probe: ET3DV5 - SN1370 -- Probe Cal Date 02/00

Med. Parameters 835 MHz Muscle: $\sigma = 0.95$ mho/m $\epsilon_r = 56.2$ $\rho = 1.00$ g/cm³; Antenna Position -- Out; Crest Factor 1.0

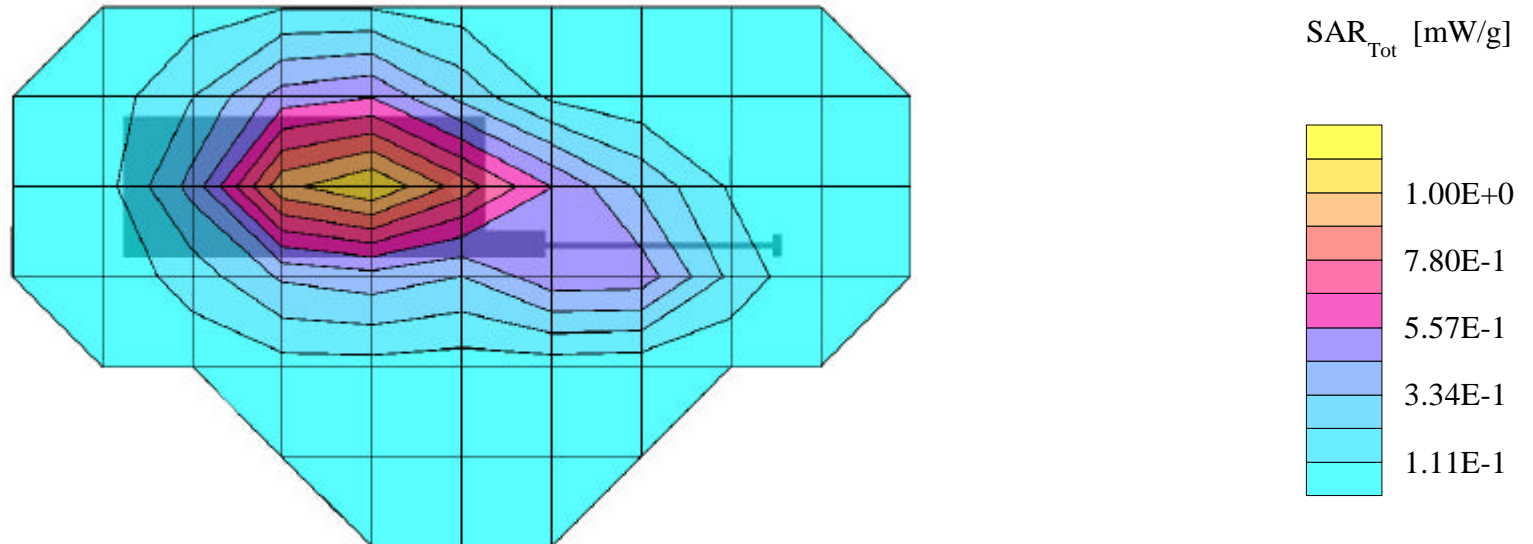
SAR (1g): 1.14 mW/g, SAR (10g): 0.785 mW/g

ACER Dual-Band Model:C301

FM Mode, Ch.0383 [836.49MHz]

Conducted Power = 26.0dBm; Spacing = 2.5cm from flat phantom to phone, no beltclip/holster

Test Date -- 04-11-2000



ACER Model:C301 -- FM Body SAR

Generic Twin Phantom; Flat Section; Probe: ET3DV5 - SN1370 -- Probe Cal Date 02/00

Med. Parameters 835 MHz Muscle: $\sigma = 0.95$ mho/m $\epsilon_r = 56.2$ $\rho = 1.00$ g/cm³; Antenna Position -- In; Crest Factor 1.0

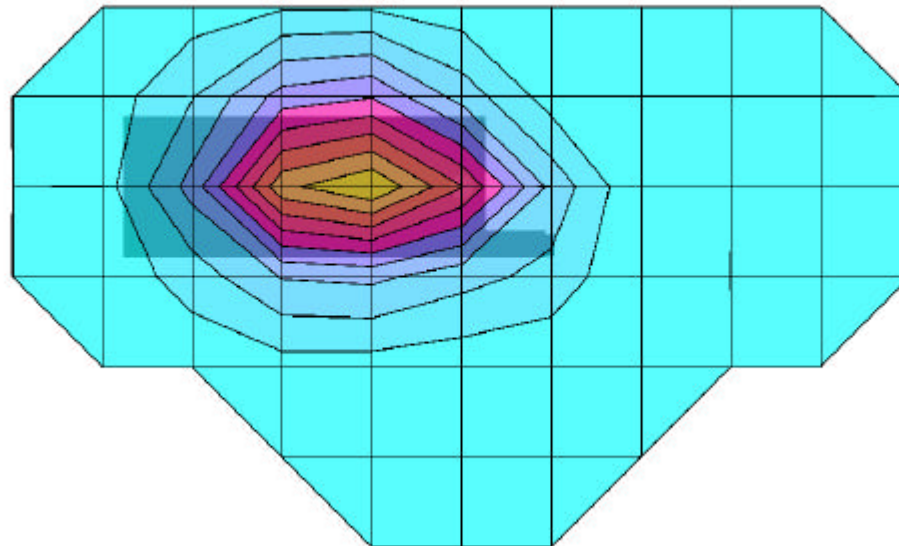
SAR (1g): 0.683 mW/g, SAR (10g): 0.472 mW/g

ACER Dual-Band Model:C301

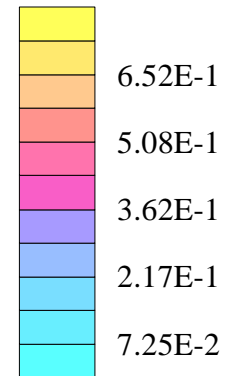
FM Mode, Ch.0799 [848.97MHz]

Conducted Power = 26.0dBm; Spacing = 2.5cm from flat phantom to phone, no beltclip/holster

Test Date -- 04-11-2000



SAR_{Tot} [mW/g]



ACER Model:C301 -- FM Body SAR

Generic Twin Phantom; Flat Section; Probe: ET3DV5 - SN1370 -- Probe Cal Date 02/00

Med. Parameters 835 MHz Muscle: $\sigma = 0.95$ mho/m $\epsilon_r = 56.2$ $\rho = 1.00$ g/cm³; Antenna Position -- Out; Crest Factor 1.0

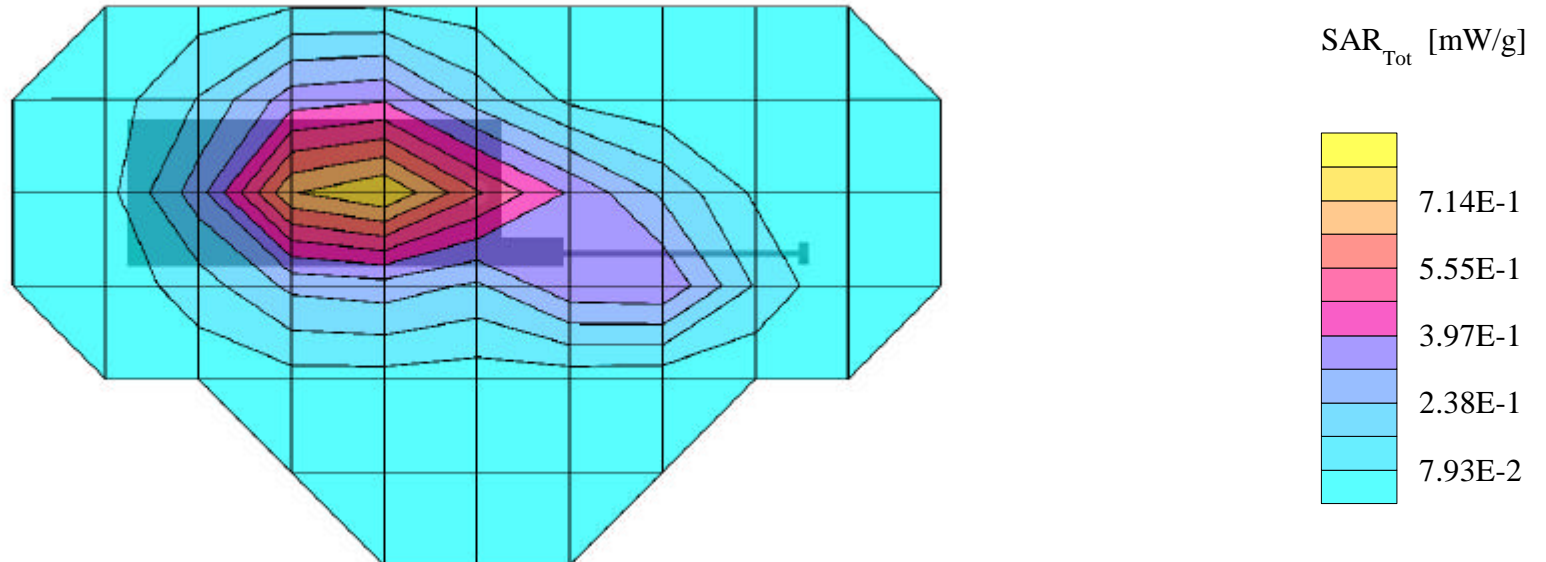
SAR (1g): 0.774 mW/g, SAR (10g): 0.535 mW/g

ACER Dual-Band Model:C301

FM Mode, Ch.0799 [848.97MHz]

Conducted Power = 26.0dBm; Spacing = 2.5cm from flat phantom to phone, no beltclip/holster

Test Date -- 04-11-2000



ACER Model:C301 -- PCS Body SAR

Generic Twin Phantom; Flat Section; Probe: ET3DV5 - SN1370 -- Probe Cal Date 02/00

Med. Parameters 1900 MHz Muscle: $\sigma = 1.85$ mho/m $\epsilon_r = 54.2$ $\rho = 1.00$ g/cm³; Antenna Position -- In; Crest Factor 1.0

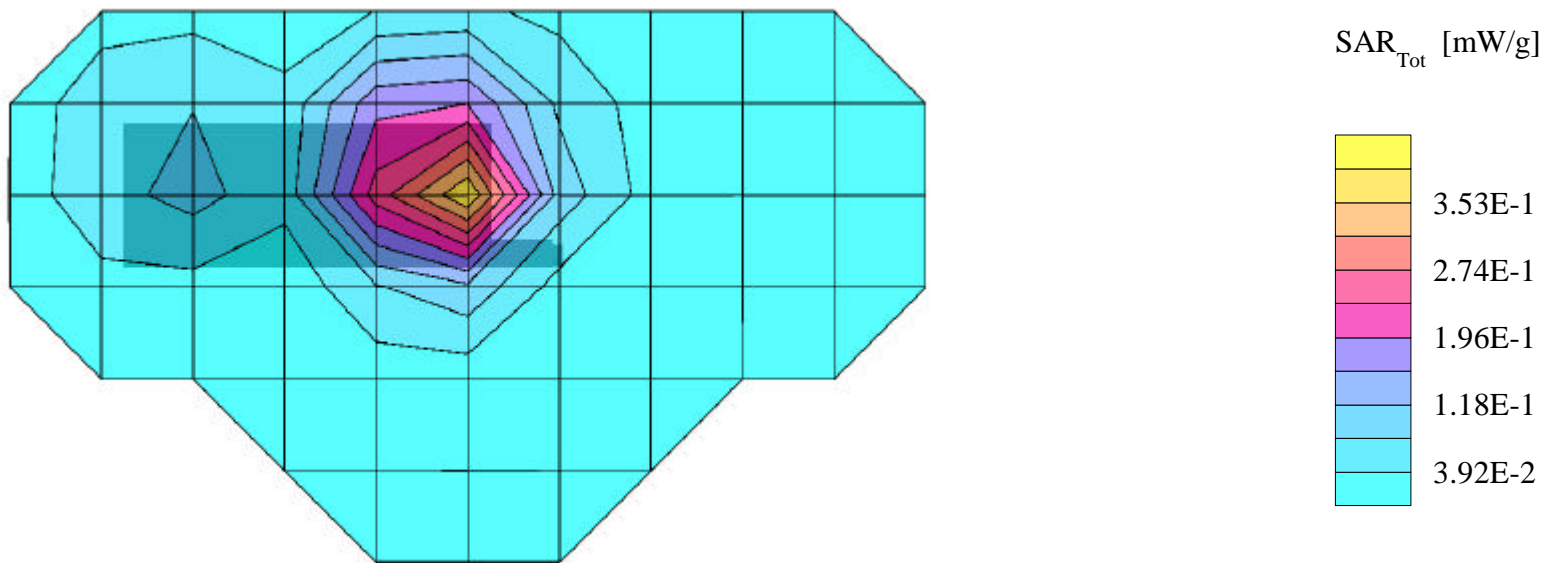
SAR (1g): 0.404 mW/g, SAR (10g): 0.236 mW/g

ACER Dual-Band Model:C301

PCS Mode, Ch.0025 [1851.25MHz]

Conducted Power = 23.5dBm; Spacing = 2.5cm from flat phantom to phone, no beltclip/holster

Test Date -- 04-12-2000



ACER Model:C301 -- PCS Body SAR

Generic Twin Phantom; Flat Section; Probe: ET3DV5 - SN1370 -- Probe Cal Date 02/00

Med. Parameters 1900 MHz Muscle: $\sigma = 1.85$ mho/m $\epsilon_r = 54.2$ $\rho = 1.00$ g/cm³; Antenna Position -- Out; Crest Factor 1.0

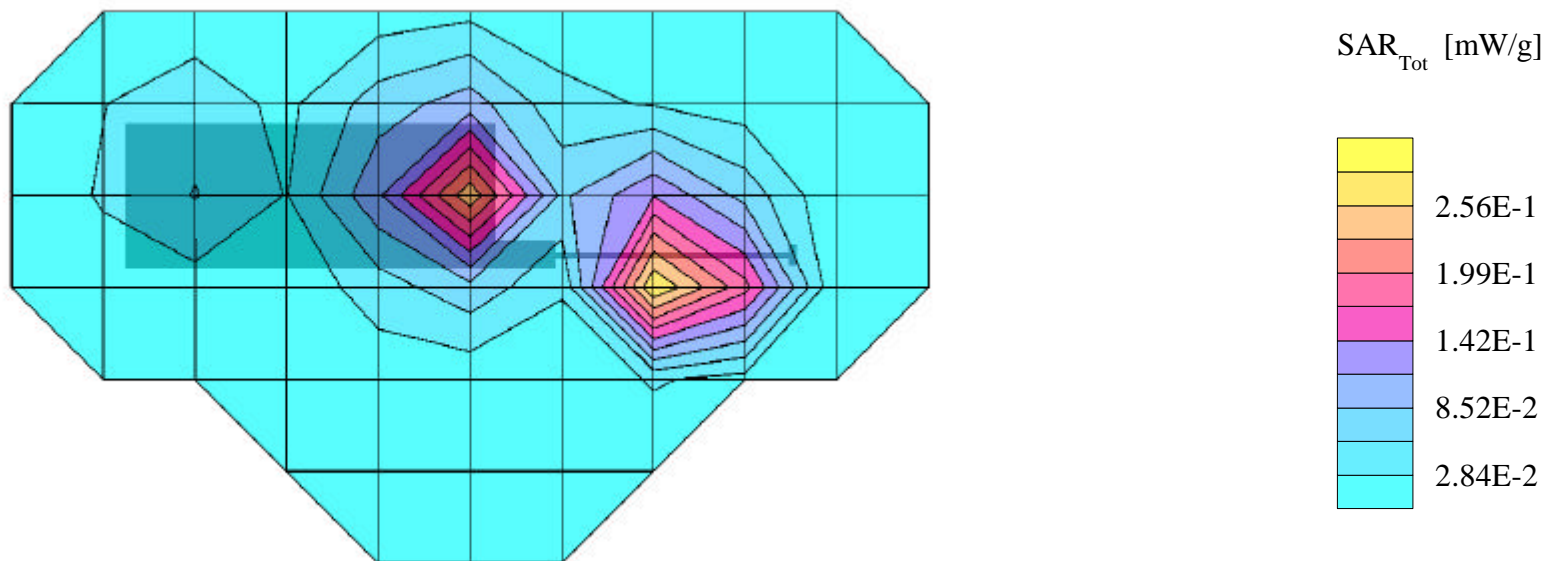
SAR (1g): 0.381 mW/g, SAR (10g): 0.207 mW/g

ACER Dual-Band Model:C301

PCS Mode, Ch.0025 [1851.25MHz]

Conducted Power = 23.5dBm; Spacing = 2.5cm from flat phantom to phone, no beltclip/holster

Test Date -- 04-12-2000



ACER Model:C301 -- PCS Body SAR

Generic Twin Phantom; Flat Section; Probe: ET3DV5 - SN1370 -- Probe Cal Date 02/00

Med. Parameters 1900 MHz Muscle: $\sigma = 1.85$ mho/m $\epsilon_r = 54.2$ $\rho = 1.00$ g/cm³; Antenna Position -- In; Crest Factor 1.0

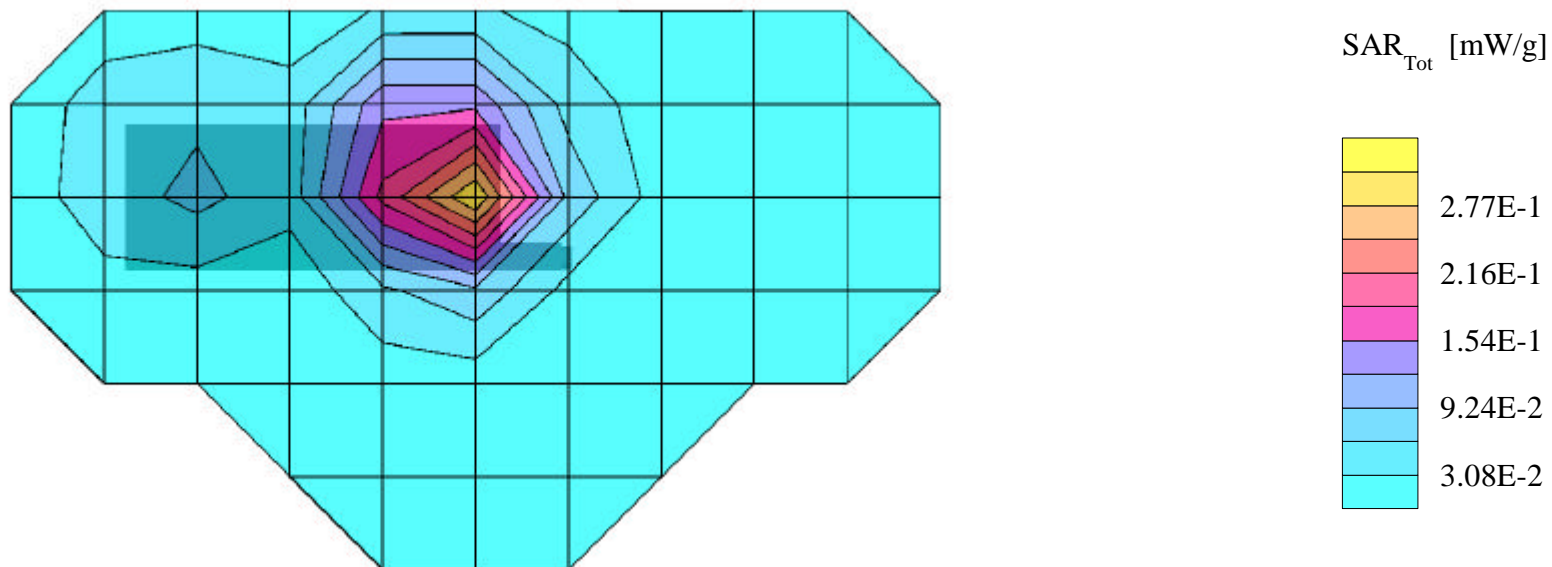
SAR (1g): 0.316 mW/g, SAR (10g): 0.185 mW/g

ACER Dual-Band Model:C301

PCS Mode, Ch.0600 [1880.00MHz]

Conducted Power = 23.5dBm; Spacing = 2.5cm from flat phantom to phone, no beltclip/holster

Test Date -- 04-12-2000



ACER Model:C301 -- PCS Body SAR

Generic Twin Phantom; Flat Section; Probe: ET3DV5 - SN1370 -- Probe Cal Date 02/00

Med. Parameters 1900 MHz Muscle: $\sigma = 1.85$ mho/m $\epsilon_r = 54.2$ $\rho = 1.00$ g/cm³; Antenna Position -- Out; Crest Factor 1.0

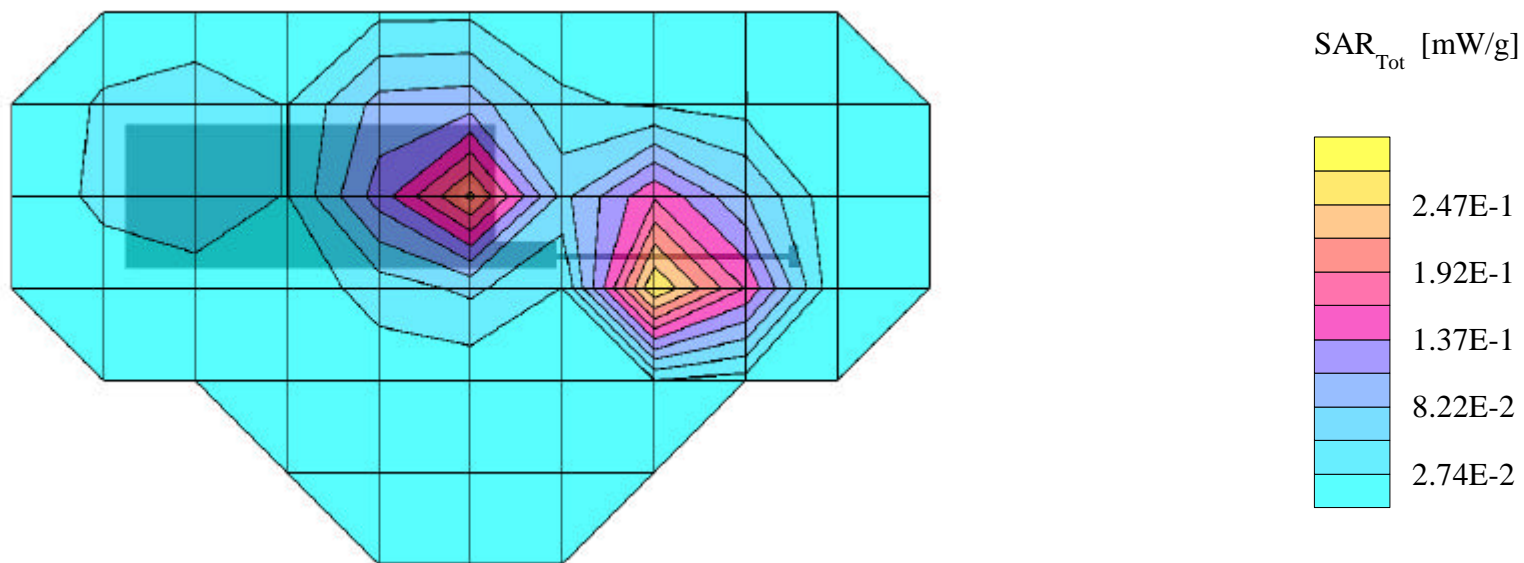
SAR (1g): 0.422 mW/g, SAR (10g): 0.221 mW/g

ACER Dual-Band Model:C301

PCS Mode, Ch.0600 [1880.00MHz]

Conducted Power = 23.5dBm; Spacing = 2.5cm from flat phantom to phone, no beltclip/holster

Test Date -- 04-12-2000



ACER Model:C301 -- PCS Body SAR

Generic Twin Phantom; Flat Section; Probe: ET3DV5 - SN1370 -- Probe Cal Date 02/00

Med. Parameters 1900 MHz Muscle: $\sigma = 1.85$ mho/m $\epsilon_r = 54.2$ $\rho = 1.00$ g/cm³; Antenna Position -- In; Crest Factor 1.0

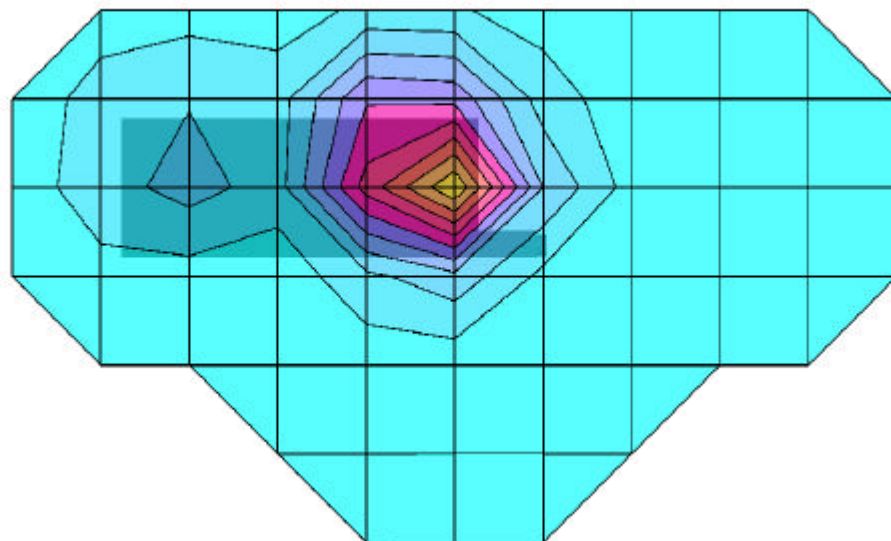
SAR (1g): 0.340 mW/g, SAR (10g): 0.198 mW/g

ACER Dual-Band Model:C301

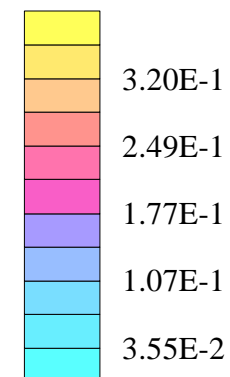
PCS Mode, Ch.1175 [1908.75MHz]

Conducted Power = 23.5dBm; Spacing = 2.5cm from flat phantom to phone, no beltclip/holster

Test Date -- 04-12-2000



SAR_{Tot} [mW/g]



ACER Model:C301 -- PCS Body SAR

Generic Twin Phantom; Flat Section; Probe: ET3DV5 - SN1370 -- Probe Cal Date 02/00

Med. Parameters 1900 MHz Muscle: $\sigma = 1.85$ mho/m $\epsilon_r = 54.2$ $\rho = 1.00$ g/cm³; Antenna Position -- Out; Crest Factor 1.0

SAR (1g): 0.469 mW/g, SAR (10g): 0.246 mW/g

ACER Dual-Band Model:C301

PCS Mode, Ch.1175 [1908.75MHz]

Conducted Power = 23.5dBm; Spacing = 2.5cm from flat phantom to phone, no beltclip/holster

Test Date -- 04-12-2000

