

Figure 3  
Removed Back Cover, Frame of Internal

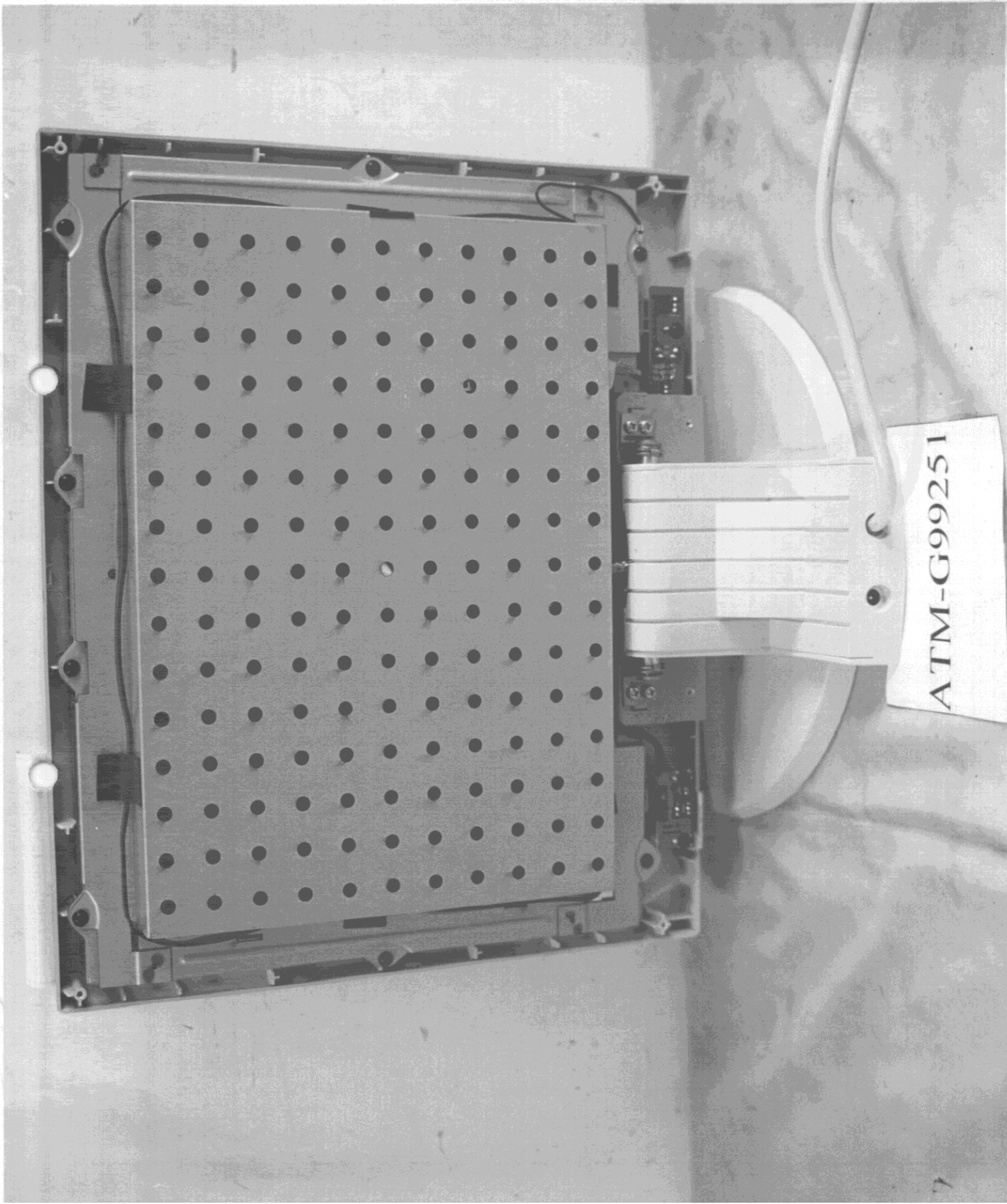


Figure 4  
Frame of Internal (Removed Shielding Case View)

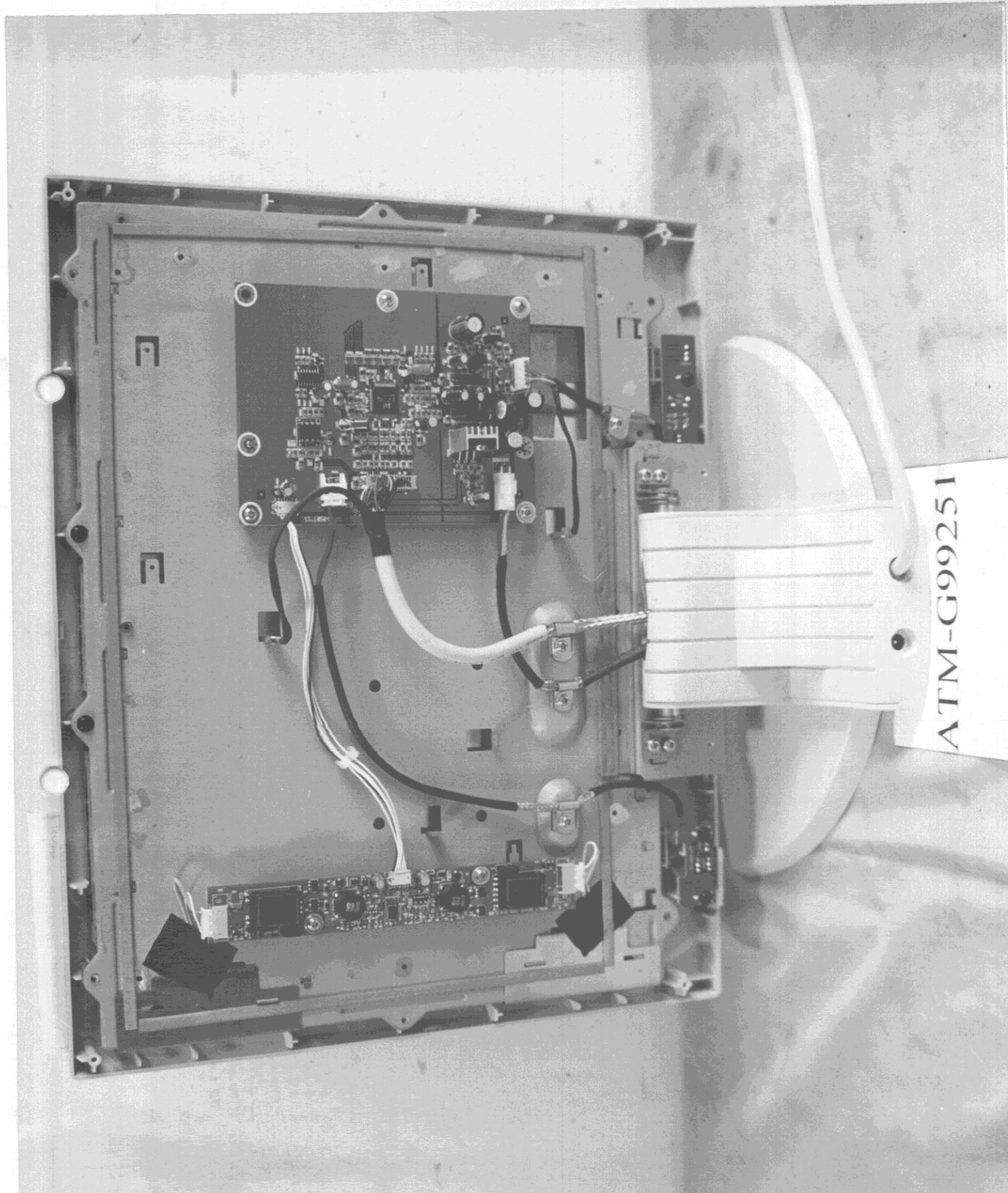


Figure 5  
Frame of Internal (Removed Receiver Board & Inverter Board)

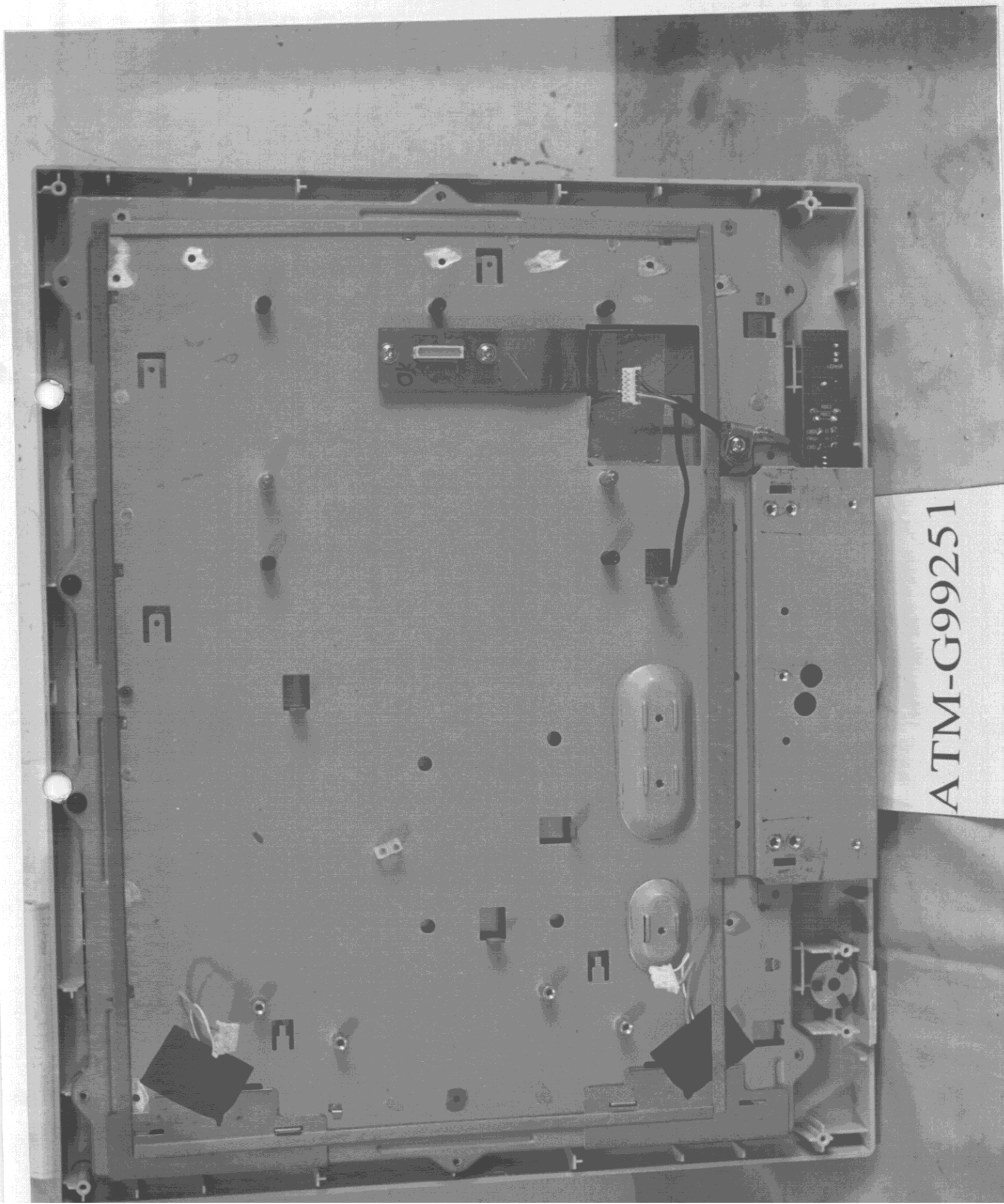




Figure 6  
Receiver Board (Component Side)

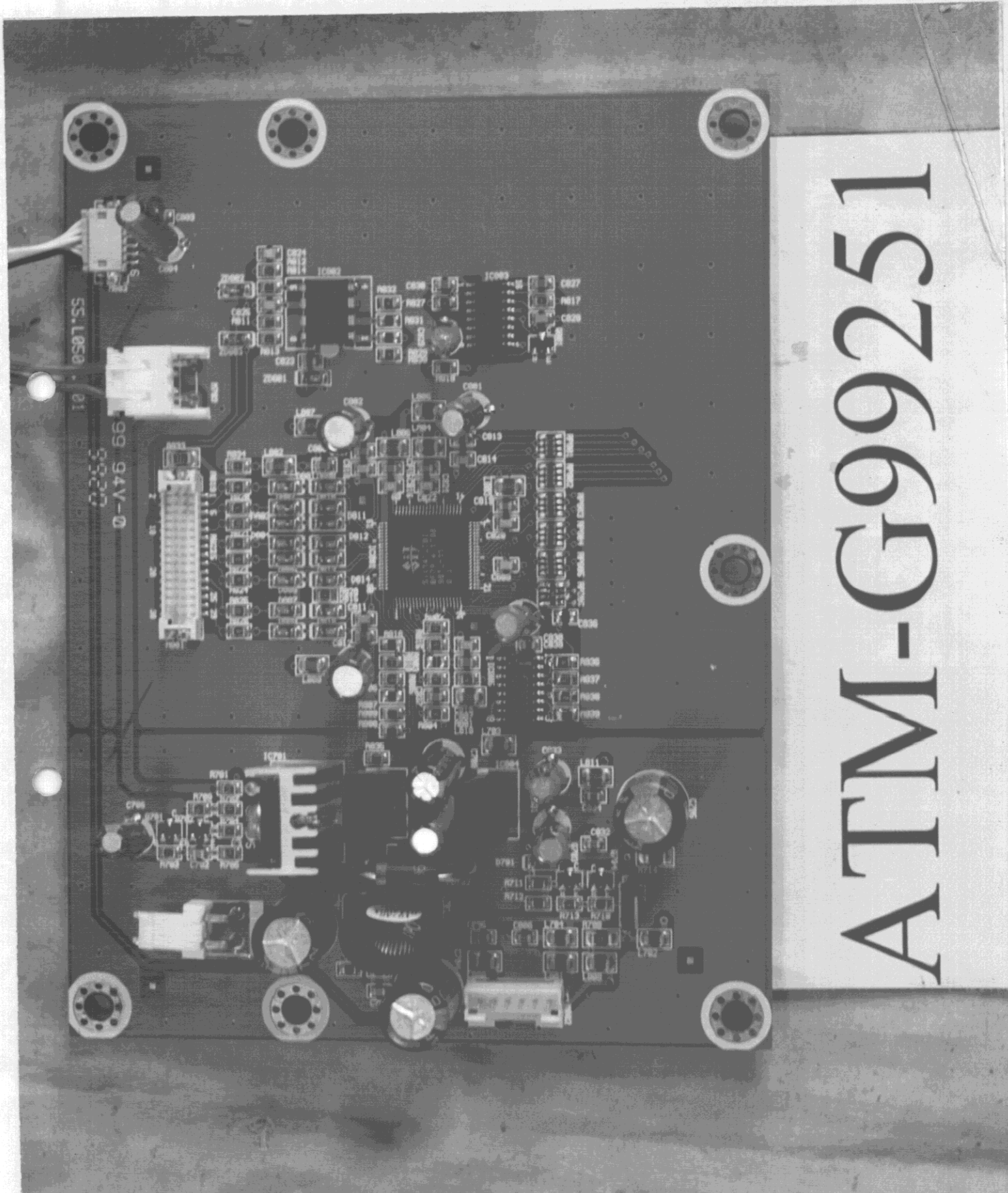
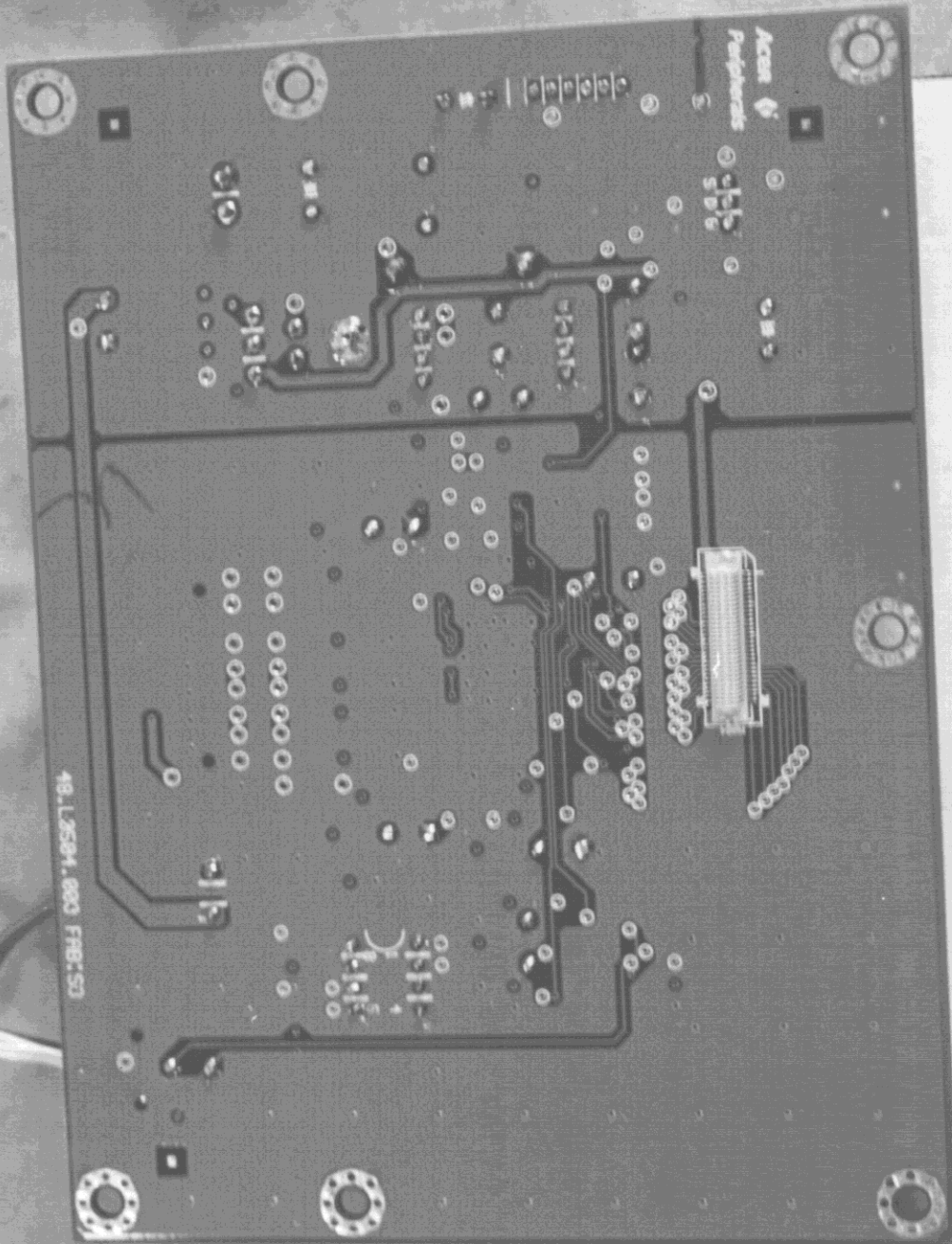


Figure 7  
Receiver Board (Solder Side)



ATM-G99251

Figure 8  
Inverter Board (Component Side)

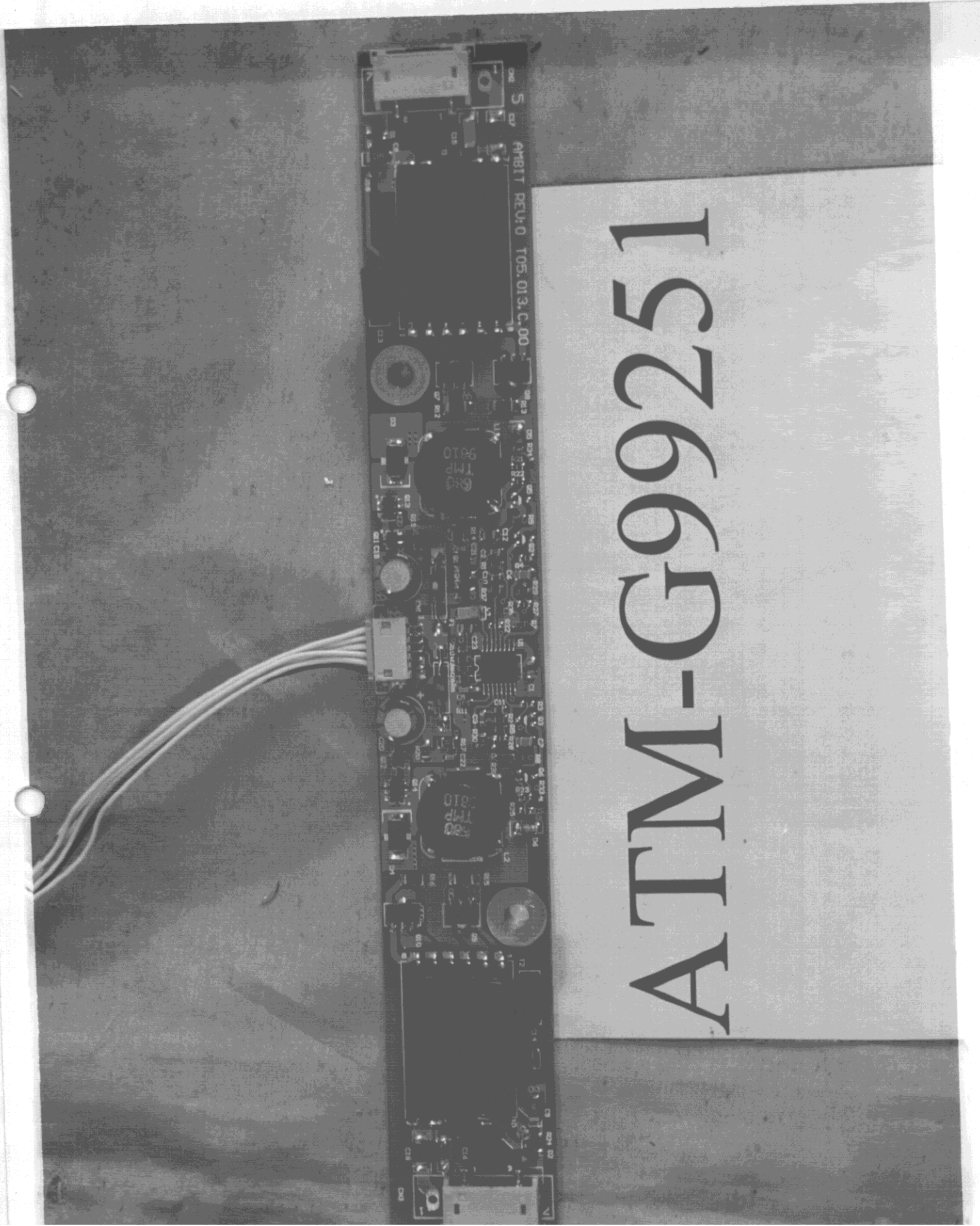




Figure 9  
Inverter Board (Solder Side)



Figure 10  
Switch Board (Component Side)

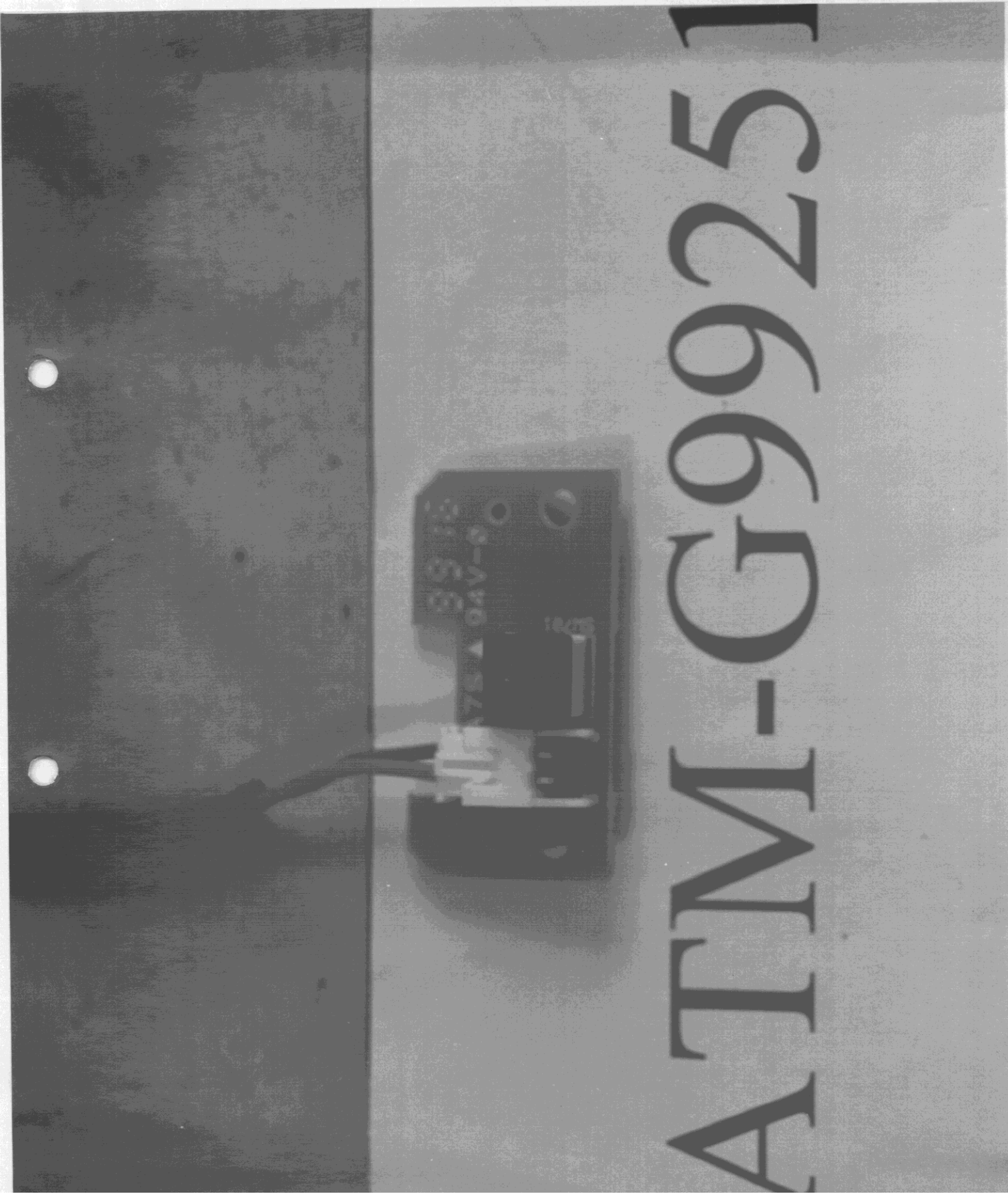




Figure 11  
Switch Board (Solder Side)



Figure 13  
LCD Panel (Front Side)

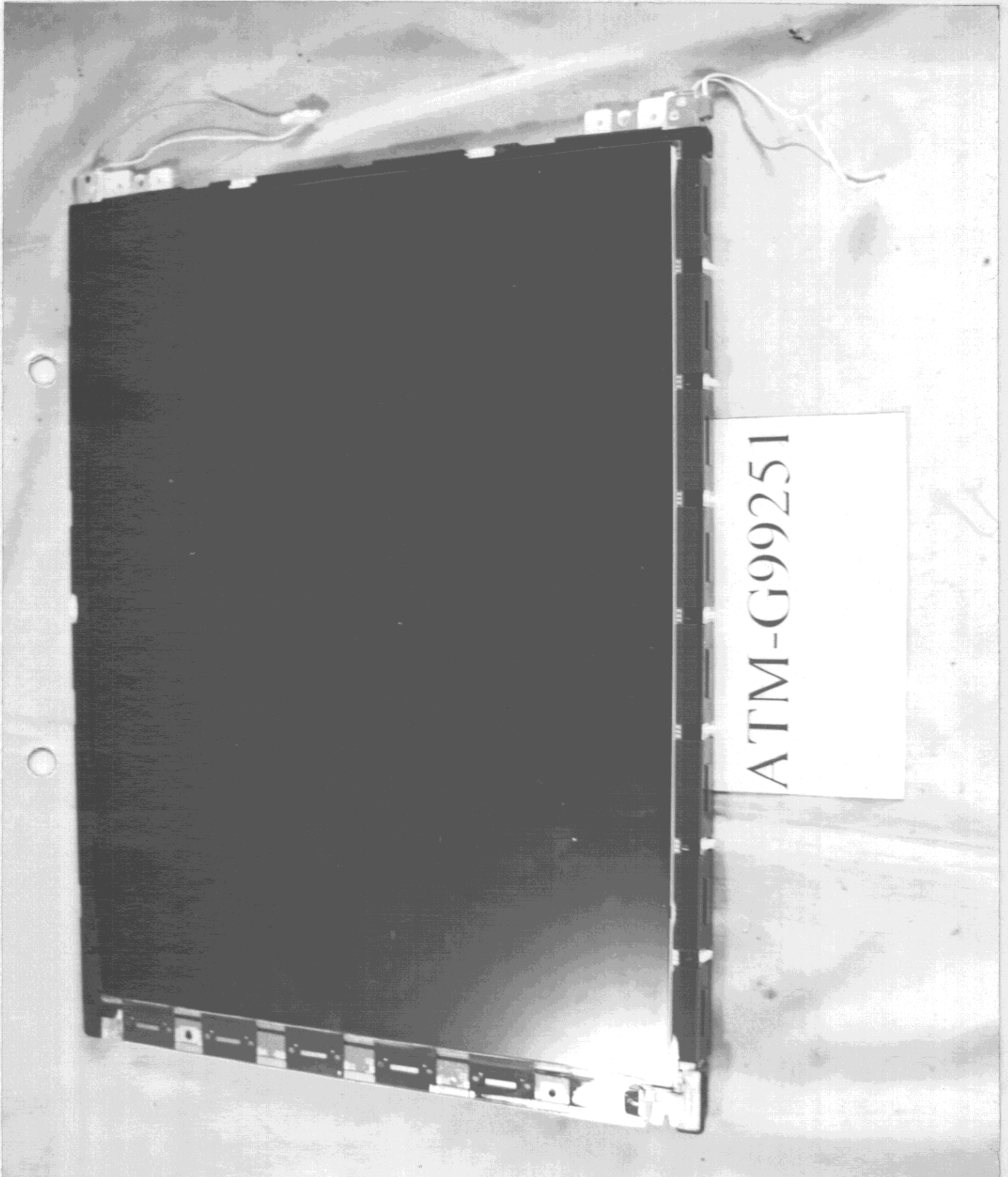


Figure 14  
LCD panel (Back Side)



ATM-G99251

DO NOT DISPOSE OF FLUORESCENT  
LAMP IN LANDFILL CONTAINING  
MERCURY. PLEASE FOLLOW LOCAL  
DISPOSAL OR RECYCLING  
INSTRUCTIONS.



LG  
LM151X2  
LG LCD INC.  
MADE IN KOREA  
C2TH