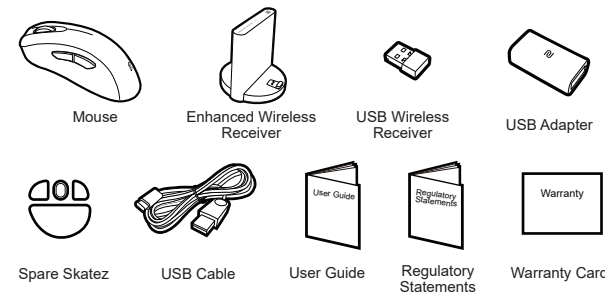
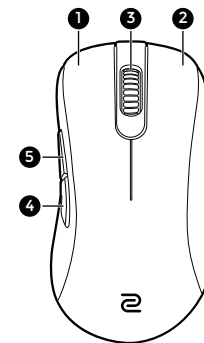


BenQ

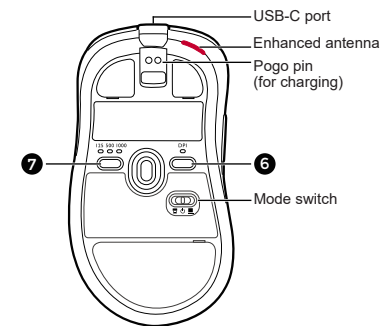
Package contents



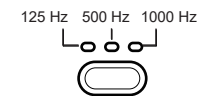
Top view



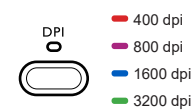
Bottom view



Report rate switch button (7)



DPI switch button (6)



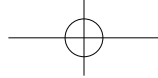
Official Website

MOUSE FOR e-SPORTS

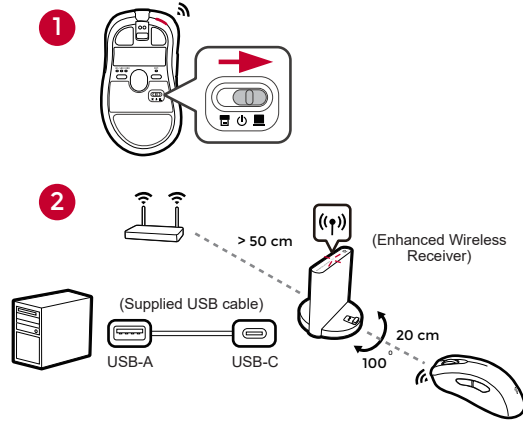
© 2022 BenQ Corporation.
All rights reserved. Rights of modification reserved.

DN: EC-CW-UG-V0

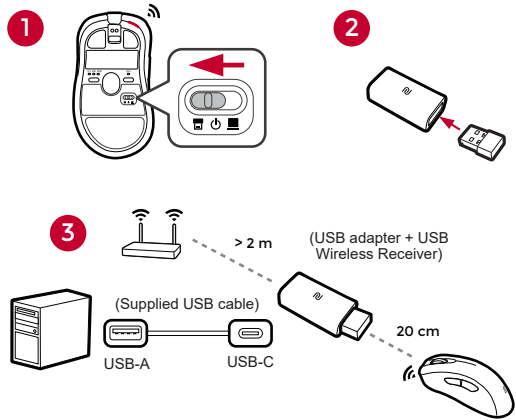
User Guide



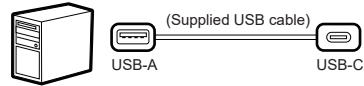
Wireless operation (via Enhanced Wireless Receiver)



Wireless operation (via USB Wireless Receiver)

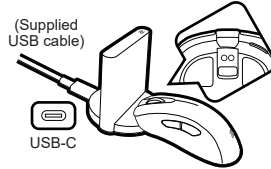


Wired operation

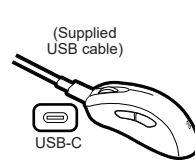


Charging

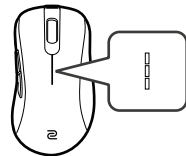
A Charging by Enhanced Wireless Receiver



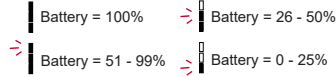
B Charging by USB-C



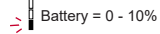
Power LED indicators



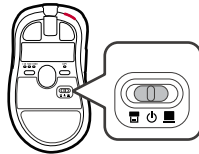
While charging



Mouse in use



Powering off (for power saving)



Product support



Official Website

zowie.benq.com > Support > DOWNLOAD & FAQ

Taiwan RoHS 限用物質含有情況標示聲明

設備名稱：	電腦滑鼠					
型號 (型式)：	EC1-CW, EC2-CW, EC3-CW					
單元	限用物質及其化學符號					
	鉛 (Pb)	汞 (Hg)	鎘 (Cd)	六價鉻 (Cr ⁶⁺)	多溴聯苯 (PBB)	多溴二苯醚 (PBDE)
上下蓋	○	○	○	○	○	○
滾輪	○	○	○	○	○	○
鋼珠	○	○	○	○	○	○
螺絲	○	○	○	○	○	○
纜線與電源線	○	○	○	○	○	○
印刷電路板	○	○	○	○	○	○
USB 無線接收器 (型號:RX-80)	○	○	○	○	○	○
增強型無線接收器 (型號:ER-80)	○	○	○	○	○	○

備註 1: "○" 係指該項限用物質之百分比含量未超出百分比含量基準值。
備註 2: "-" 係指該項限用物質為排除項目。

E-Waste Declaration for India



This symbol on the product or on its packaging indicates that this product must not be disposed of with your other household waste. Instead it is your responsibility to dispose of your waste equipment by handing it over to a designated collection point for the recycling of waste electrical and electronic equipment. The separate collection and recycling of your waste equipment at the time of disposal will help to conserve natural resources and ensure that it is recycled in a manner that protects human health and the environment. For more information about E-waste and the places to drop off your waste equipment for recycling in India please visit <https://www.benq.com/en-us/support/recycling/global-recycle.html>.