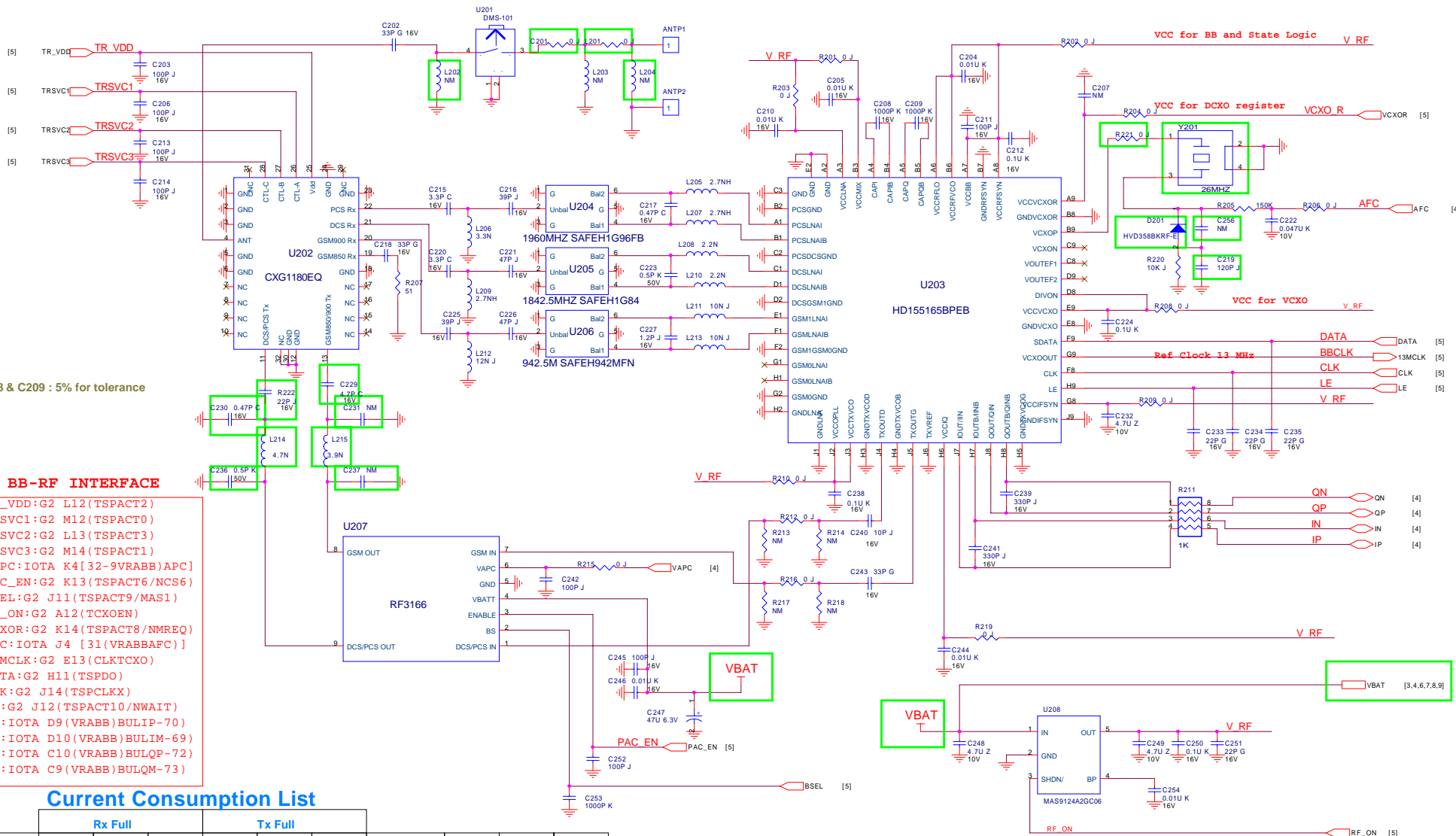


<b>BenQ Corporation</b>				
Project Code 9J.G0S21.001		Model Name CUPS1A		OEM/ODM Model Name Cupid
Title Main Block				
Size <Size>	PCB P/N 4H.G0S21.S01	PCB Rev. LPR3	Document Number 9J.G0S21.000.C2.204.001	Rev. 0
Date: 星期六, 十二月 17, 2005			Sheet 1 of 10	
Prepared By Frank Yan, Kimi Lee		Reviewed By Dennis Wu, Garry Wang		Approved By Hook Chen, Jerry L Liu

# Cupid RF: GSM900-1800-1900(B6E165 & RF3166 & SONY\_CXG1180EQ)

Power Supply voltage: 2.8 V  
 RX Current Consumption: 76 mA  
 TX Current Consumption: 144 mA  
 VCXO Current Consumption: 2.73 mA



C208 & C209 : 5% for tolerance

### BB-RF INTERFACE

- TR\_VDD:G2 L12(TSPACT2)
- TRSV1:G2 M12(TSPACT0)
- TRSV2:G2 L13(TSPACT3)
- TRSV3:G2 M14(TSPACT1)
- VAPC:IOTA K4[32-9VRABB]APC]
- PAC\_EN:G2 K13(TSPACT6/NCS6)
- BSEL:G2 J11(TSPACT9/MAS1)
- RF\_ON:G2 A12(TCXOEN)
- VCXOR:G2 K14(TSPACT8/NMREQ)
- AFC:IOTA J4 [31(VRABB)AFC]
- 13MCLK:G2 E13(CLKTCXO)
- CLK:G2 J14(TSPCLKX)
- LE:G2 J12(TSPACT10/NWAIT)
- IP:IOTA D9(VRABB)BULIP-70)
- IN:IOTA D10(VRABB)BULIM-69)
- QP:IOTA C10(VRABB)BULQP-72)
- QN:IOTA C9(VRABB)BULQM-73)

### Current Consumption List

B6E Pin	Rx Full			Tx Full			T/R SW Pin	TRSV1	TRSV2	TRSV3
	EGSM	DCS	PCS	EGSM	DCS	PCS				
B3	9.5	9.7	9.7	0.0	0.0	0.0	EGSM Tx	L	L	L
A3	5.4	7.5	8.1	0.0	0.0	0.0	DCS Tx	L	L	H
A6	10.9	12.7	12.8	7.2	7.0	7.0	PCS Tx	L	L	H
B6	16.0	16.0	16.0	16.0	16.0	16.0	DCS Rx	L	H	L
A7	13.2	13.1	13.2	0.0	0.0	0.0	PCS	L	H	H
A8	5.9	5.9	5.9	5.9	5.9	5.9	B6GSM Rx	H	L	H
A9	0.0	0.0	0.0	0.0	0.0	0.0				
E9	1.8	1.8	1.8	1.8	1.8	1.8				
G8	0.0	0.0	0.0	4.1	4.1	4.1				
H6	0.0	0.0	0.0	8.8	8.8	8.8				
J3	0.0	0.0	0.0	52	37	37				
J2	0.0	0.0	0.0	11.9	10.9	10.7				
<b>Total(mA)</b>	<b>62.8</b>	<b>66.7</b>	<b>67.5</b>	<b>107.7</b>	<b>91.5</b>	<b>91.3</b>				

**BenQ Corporation**

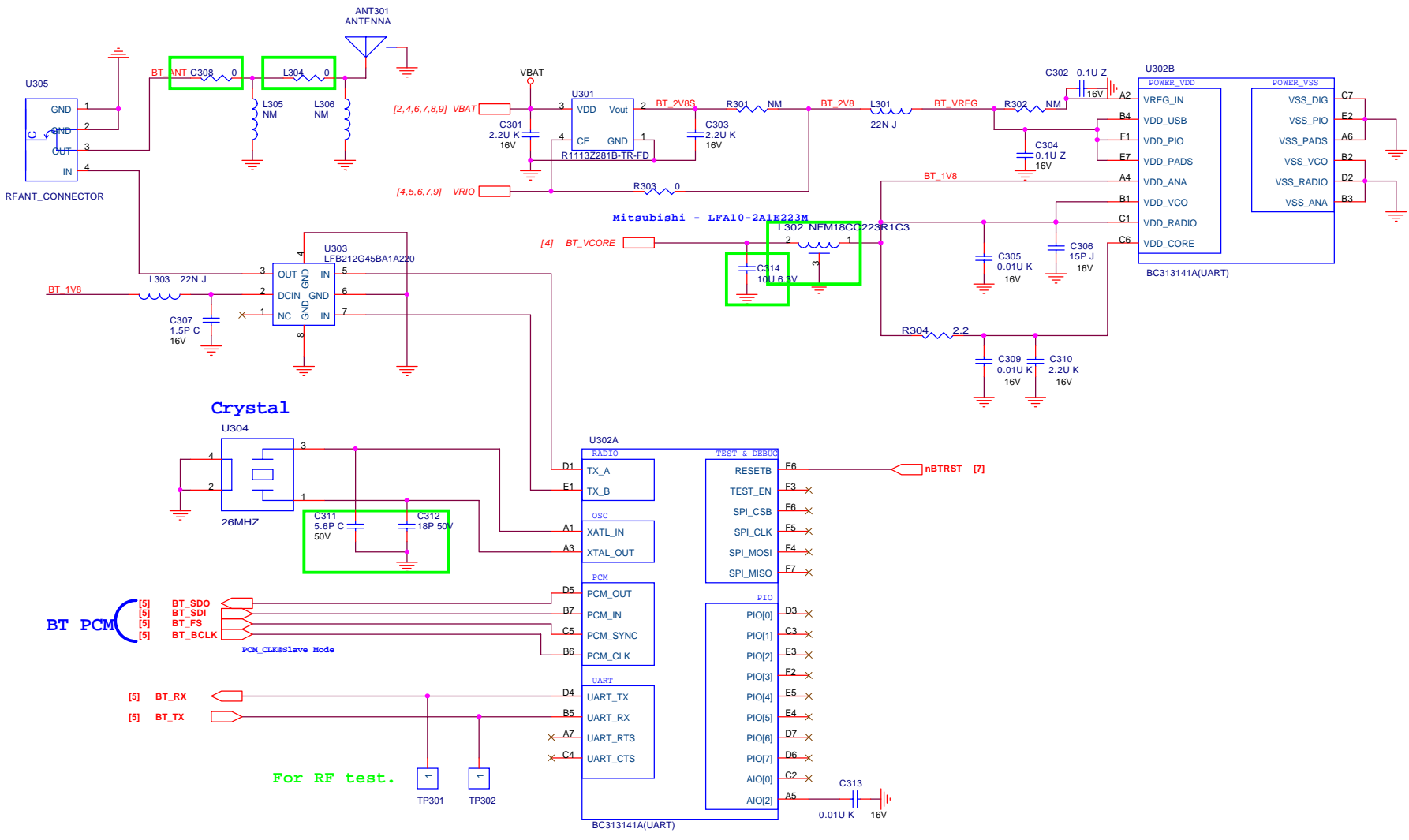
Project Code: 9J.G0S21.001 | Model Name: CUP15A | OEM/ODM Model Name: Cupid

Title: RF Block

Size: 4H.G0S21.S01 | PCB P/N: LPR3 | PCB Rev: 9J.G0S21.000.C2.204.001 | Document Number: | Rev: 0

Date: 2005年12月17日 | Sheet: 2 of 10

Prepared By: Kimi Lee | Reviewed By: Eitan Chen | Approved By: Garry Wang

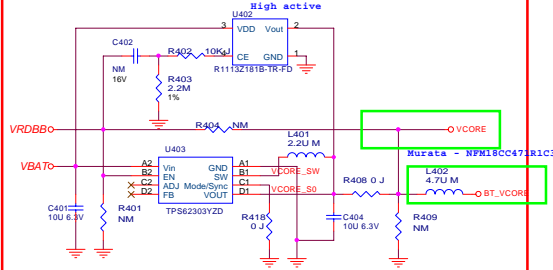


	U301	R301	L301	R302	R303	L302	C301	C303
LDO Power	2V8LDO	0	22N	0	NM	NM	2.2U	2.2U
Switching Power	NM	NM	0	NM	0	Filter	NM	NM

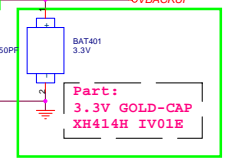
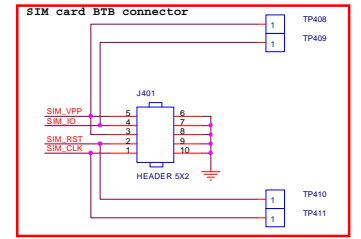
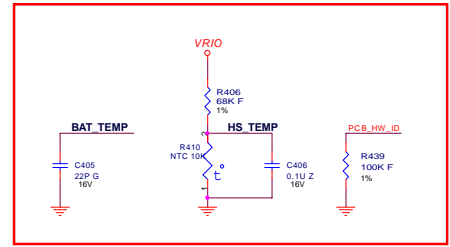
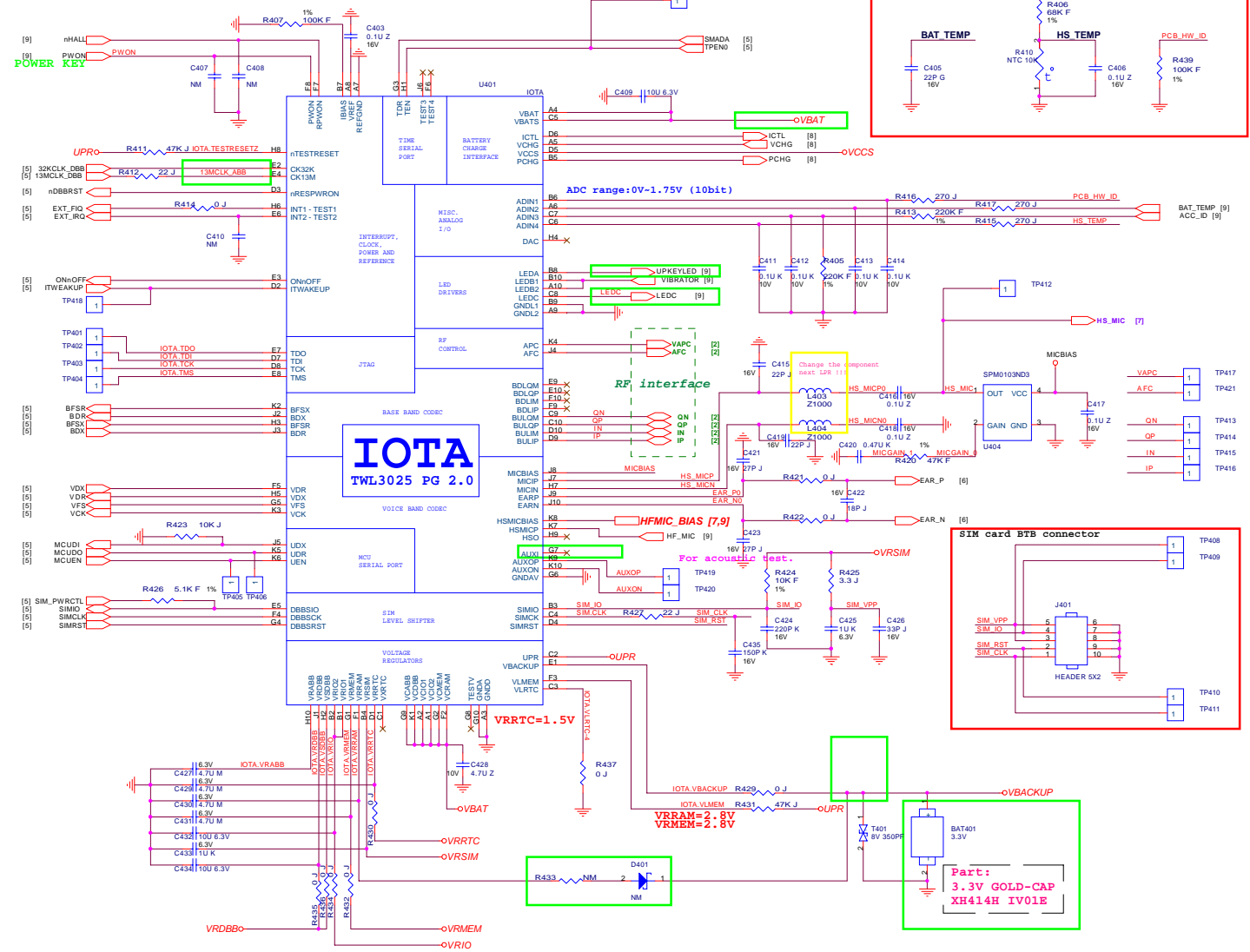
**BenQ Corporation**

Project Code 9J.G0S21.001	Model Name CUPS1A	OEM/ODM Model Name Cupid
Title Blue Tooth Block		
Size <Size>	PCB P/N 4H.G0S21.S01	PCB Rev. LPR3
Document Number 9J.G0S21.000.C2.204.001	Rev. 0	
Date: 星期六, 十二月 17, 2005	Sheet 3	of 10
Prepared By Goldberg Wang	Reviewed By Frank Yan	Approved By Garry Wang

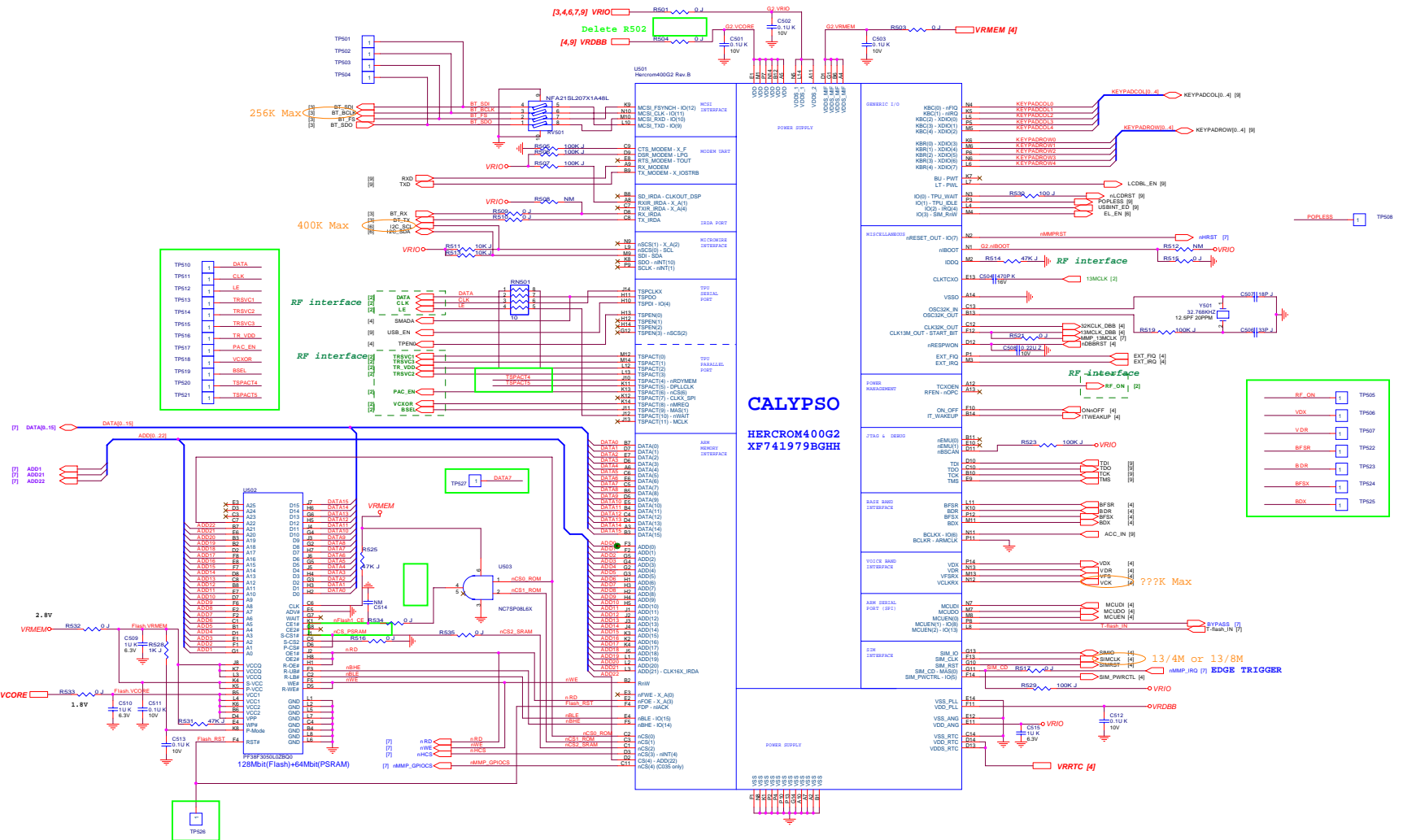
# POWER PART



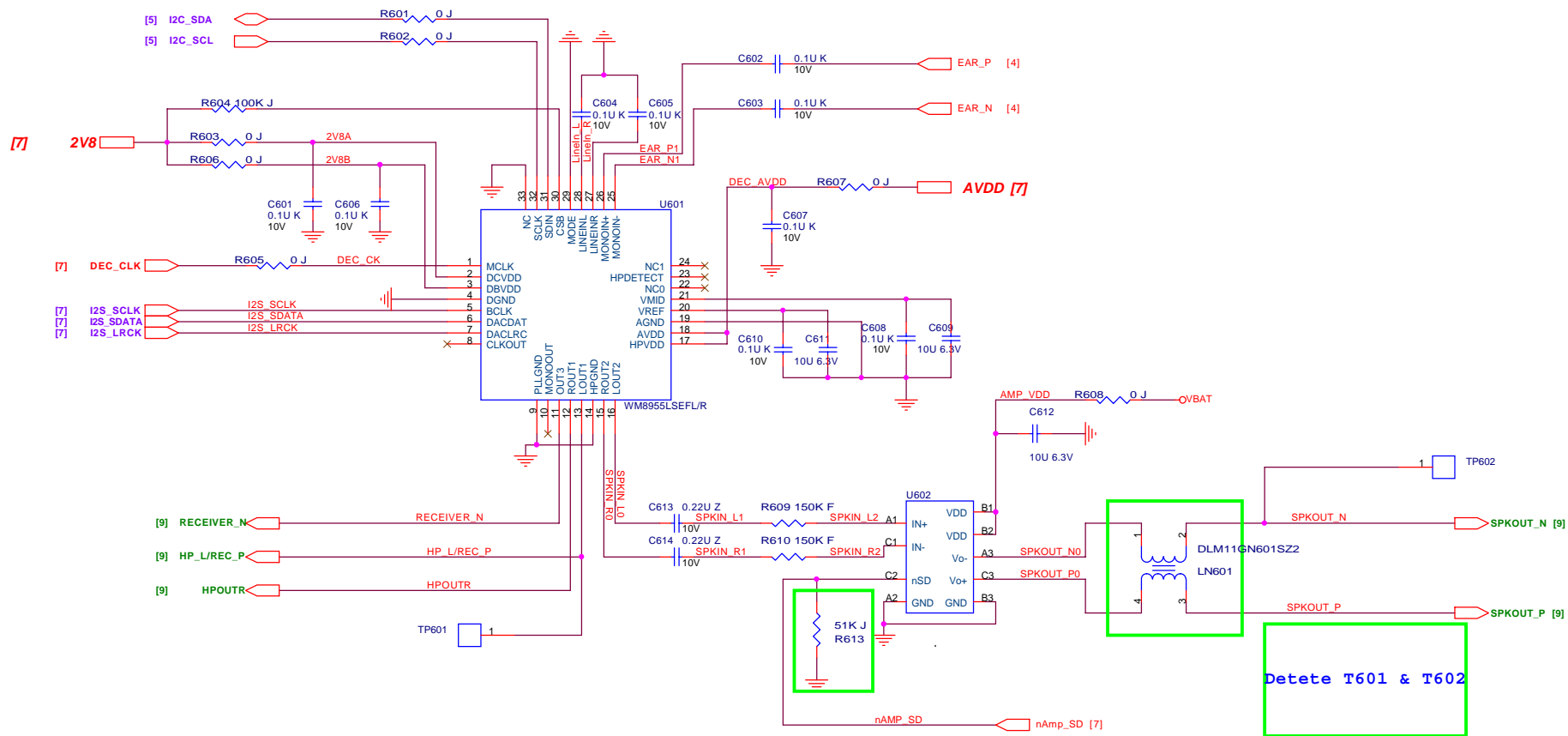
- [2,3,6,7,8,9] VBAT = 3.2V-4.2V
- [8] VCCS = VCCS
- [5] VVRTC = VVRTC 1V5, 30uA
- [5] VRRTC = VRRTC 2V8, 60mA, 1mA
- [5] VRMEM = VRMEM 1V5, 1.20mA, 1mA
- [5,9] VRDBB = VRDBB 2V8, 1.00mA, 1mA
- [3,5,6,7,9] VRIO = VRIO VSDBB 2V8, 50mA, 1mA
- VRRAM = VRRAM 1V8, ???mA
- [5,7,9] VCORE = VCORE Bluetooth VCORE
- [3] BT\_VCORE = BT\_VCORE Vol\_Out, Active\_Cur, Sleep\_Cur



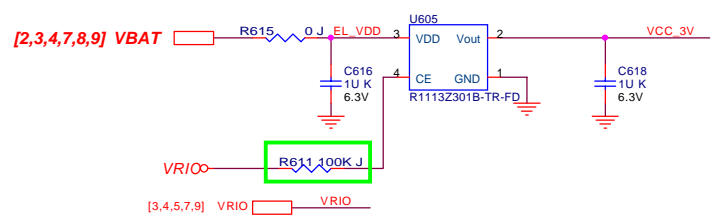
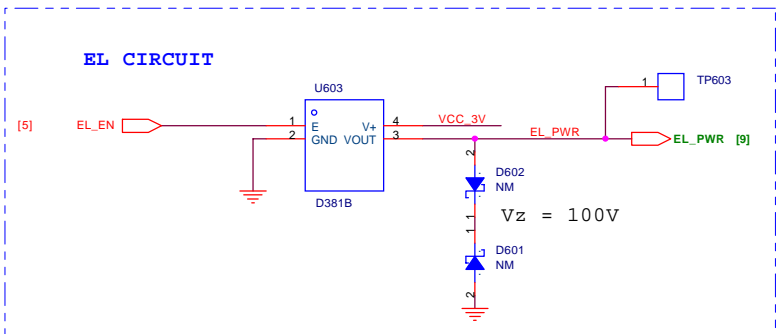
BenQ Corporation			
Project Code	Model Name	OEM/Model Name	
9J.G0521.001	CUPS1A	Cupid	
Title: ABB Block			
Size	PCB Pin	PCB Rev	Document Number
-S02-	4H.G0521.S01	LPR3	9J.G0521.000.C2.204.001
Date:	Prepared By:	Reviewed By:	Approved By:
日期: 十二月 17, 2005	Adrian Huang	Frank Yan	Dennis Wu
Sheet	4	of	10



BenQ Corporation			
Project Code	Model Name	OEM/ODM Model Name	
9J.G0521.001	CLP51A	Cust.	
Title: 058 Rev.A			
Rev	PCB P/N	POS Rev	Document Number
<Rev>	9J.G0521.001	LPR3	9J.G0521.000.C2.204.001
Date	2005年12月17日	Prepared By	Sheet 5 of 10
Prepared By	Frank Yeh	Approved By	
Drawn		Checked	

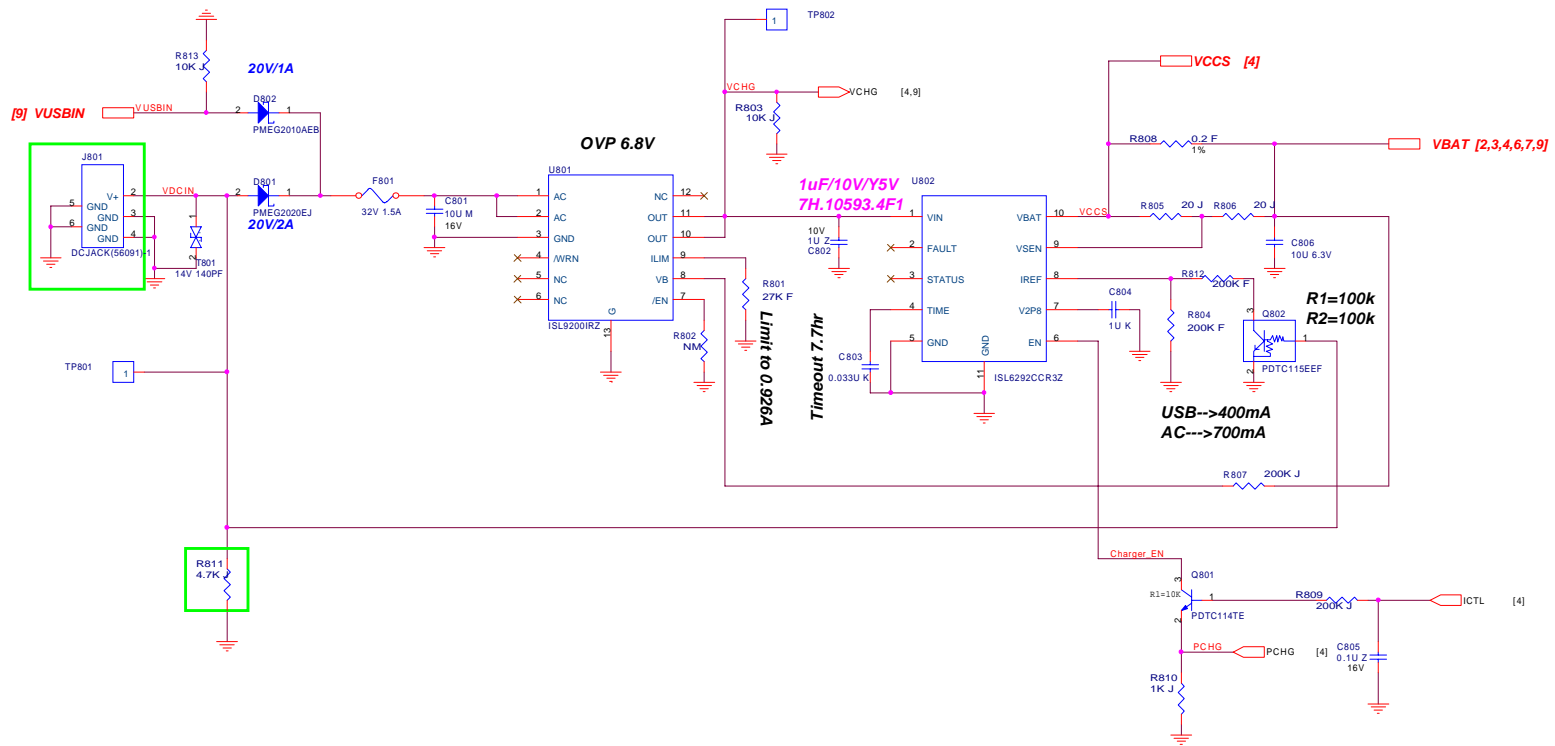


Detete T601 & T602



<b>BenQ Corporation</b>				
Project Code 9J.G0S21.001	Model Name CUPS1A	OEM/ODM Model Name Cupid		
Title Audio				
Size <Size>	PCB P/N 4H.G0S21.S01	PCB Rev. LPR3	Document Number 9J.G0S21.000.C2.204.001	Rev. 0
Date: 星期六, 十二月 17, 2005		Sheet 6 of 10		
Prepared By Adrian Huang		Reviewed By Frank Yan		Approved By Dennis Wu



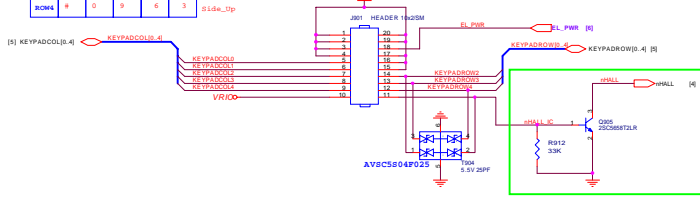


<b>BenQ Corporation</b>			
Project Code	Model Name	OEM/ODM Model Name	
9J.G0S21.001	CUPS1A	Cupid	
Title			
Charge Block			
Size	PCB P/N	PCB Rev.	Document Number
<Size>	4H.G0S21.S01	LPR3	9J.G0S21.000.C2.204.001
Date:	Prepared By	Reviewed By	Approved By
日期: 十二月 17, 2005	Adrian Huang	Frank Yan	Dennis Wu
Sheet	8 of 10		

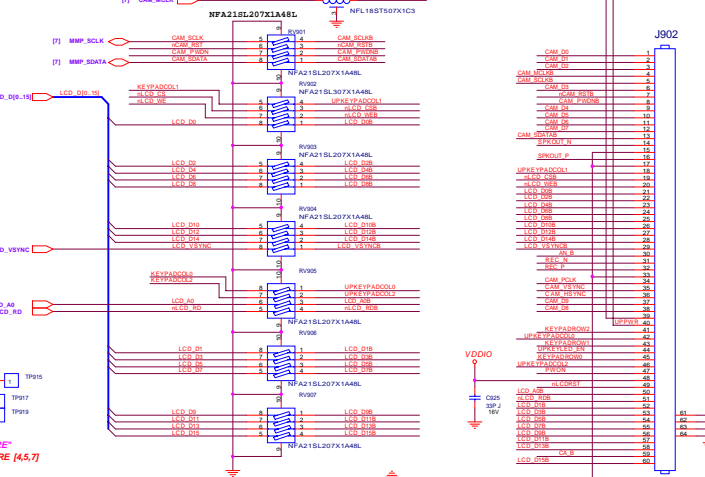
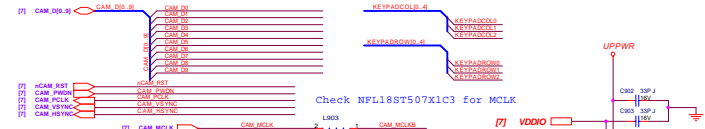
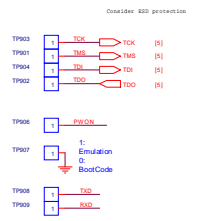
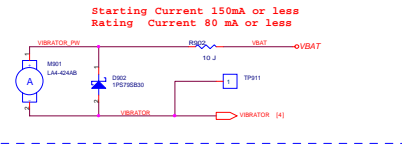


Side\_key + Keypad + KeyLock(Po Hua) + Hall Sensor

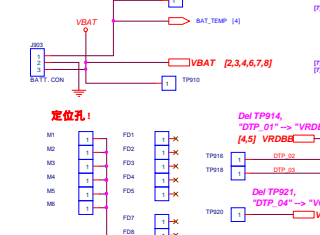
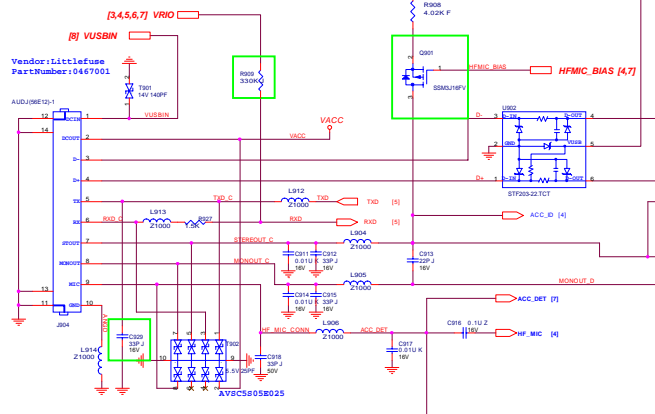
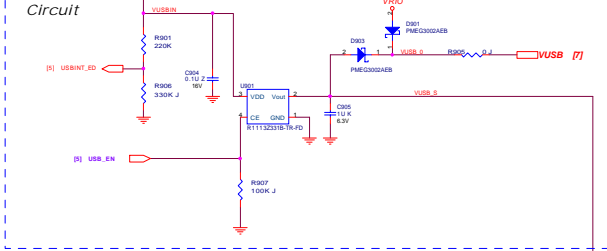
COA5	COA4	COA3	COA2	COA1	GROUP	
R0M0	SA1_1	SP	SA1_2		END KEY	
R0M1	LEFT	OK	RIGHT		Hook key	
R0M2	END	DOWN		4	KEY_LOCK	
R0M3	8	7	*	0	2	Slide_Down
R0M4	9	0	1	2	3	Slide_Up



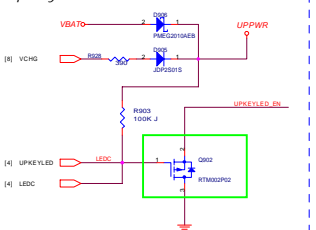
Vibrator



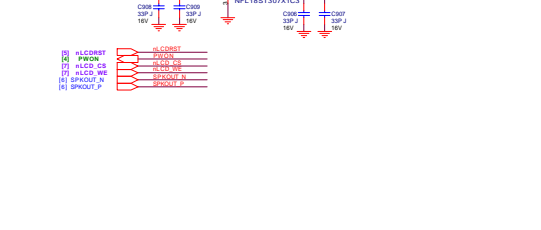
USB Detect Circuit



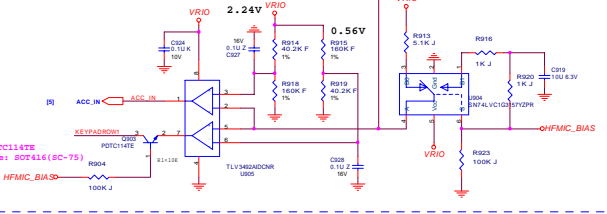
UpKeyLED Driver



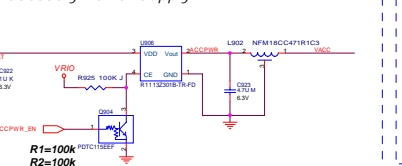
LCM Backlight Drive Circuit



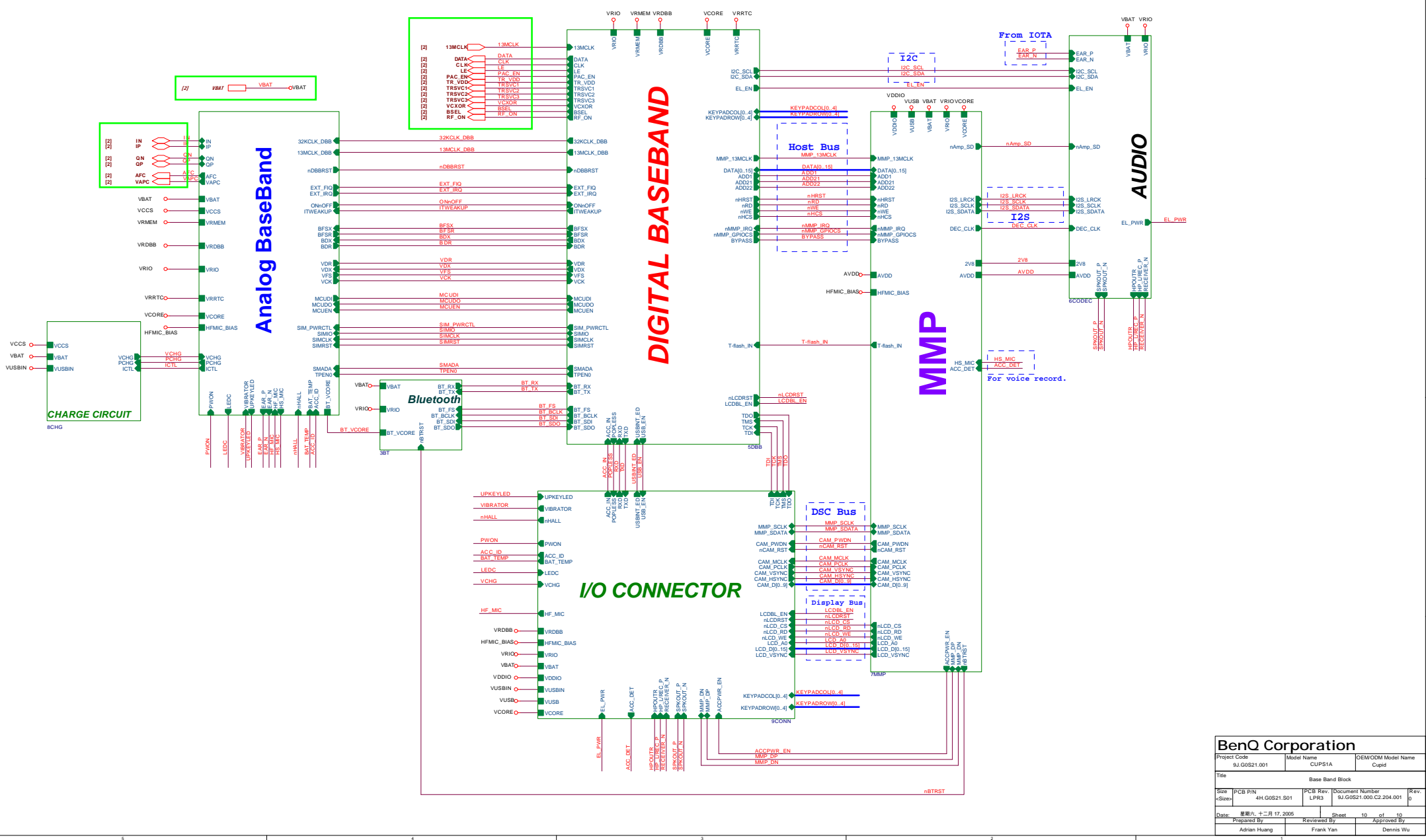
Accessory & Hook-Key Detector



Accessory Power Supply



BenQ Corporation			
Project Code	Board Name	OCM/ODM Model Name	
9J G0521001	CUP31A	Cup31	
File	Connector Block		
Rev	PCB P/N	PCB Rev	Document Number
1.0	9J G0521001	1.0	9J G0521001_C01_204_001
Date	Rev. 1.0	Rev. 1.0	Rev. 1.0
17/05/2005	17/05/2005	17/05/2005	17/05/2005
Prepared By	Reviewed By	Approved By	
CL Lin	Frank Yan	Deming Wu	



<b>BenQ Corporation</b>		
Project Code BJ.G0S21.001	Model Name CUPS1A	OEM/ODM Model Name Cupid
Title Base Band Block		
Size PCB P/N 4H.G0S21.S01	PCB Rev LPR3	Document Number BJ.G0S21.000.C2.Z04.001
Date 2005年12月17日	Prepared By Adrian Huang	Sheet 10 of 10
	Reviewed By Frank Yan	Approved By Dennis Wu