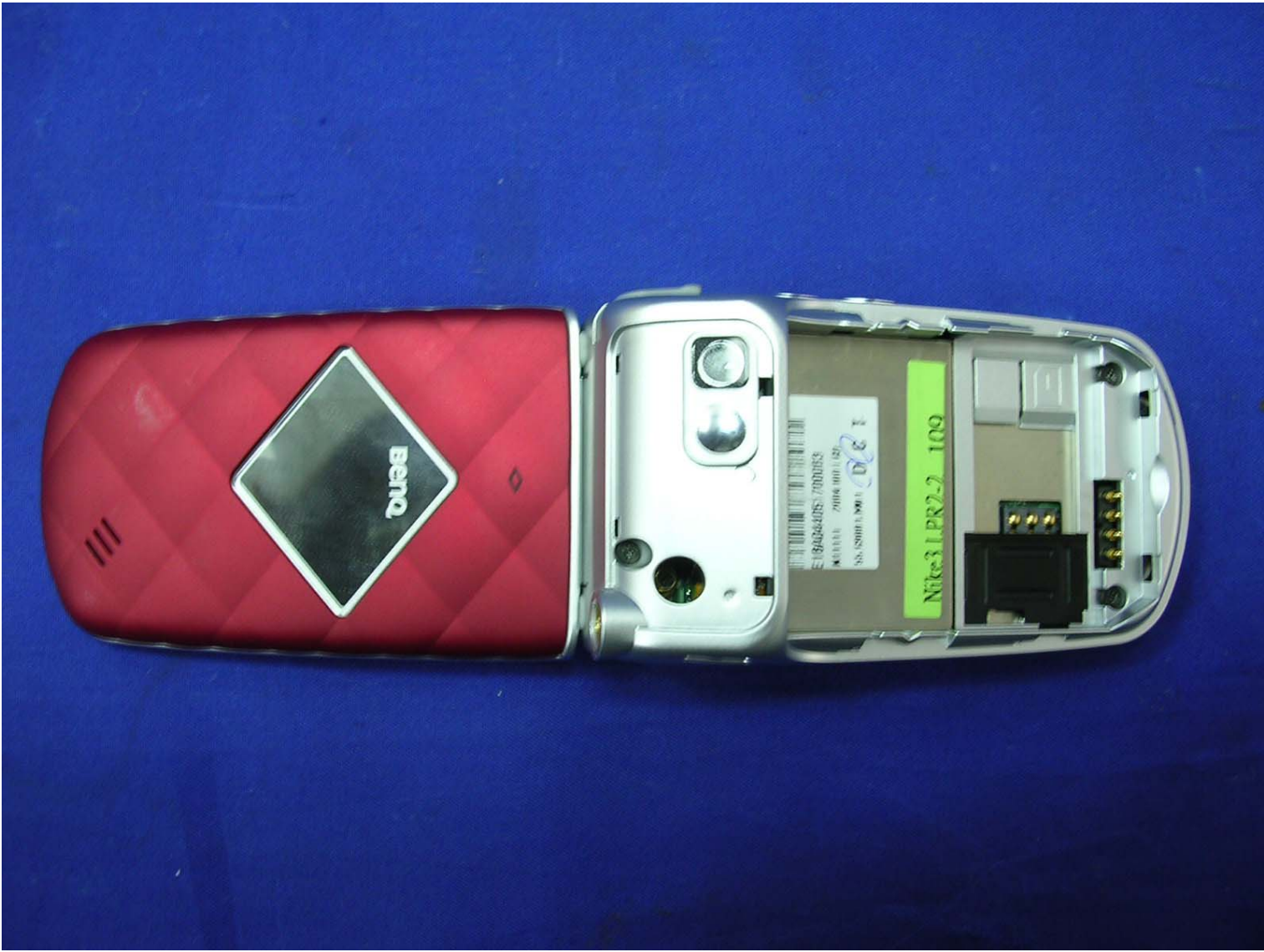




Cautions:

Use BenQ original specified chargers and batteries only.
May explode if disposed of in fire. Do not allow
metal objects to contact the battery terminals.
Do not short-circuit. Do not incinerate.
Do not disassemble.

Model: BENQ NIKE-3
BAT SPEC: Sanyo-GS 443443
2004 / 10 / 06
REV: T1 ,A
Foxlink Engineering Sample









Nike3 LPR2-2 109

E18A044051700053
N11111 2004 100 1 121
55 6200 1 M01

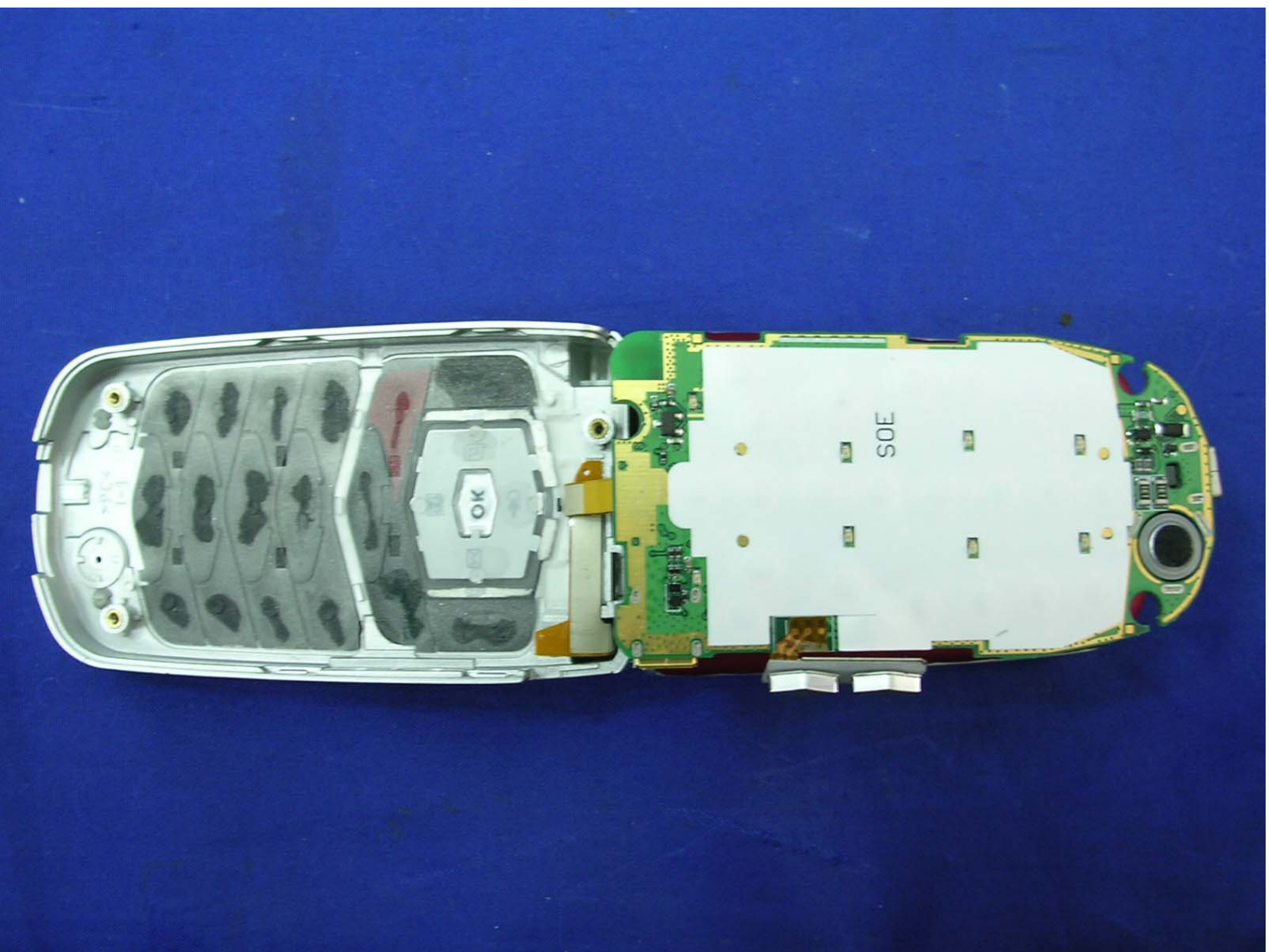
A148

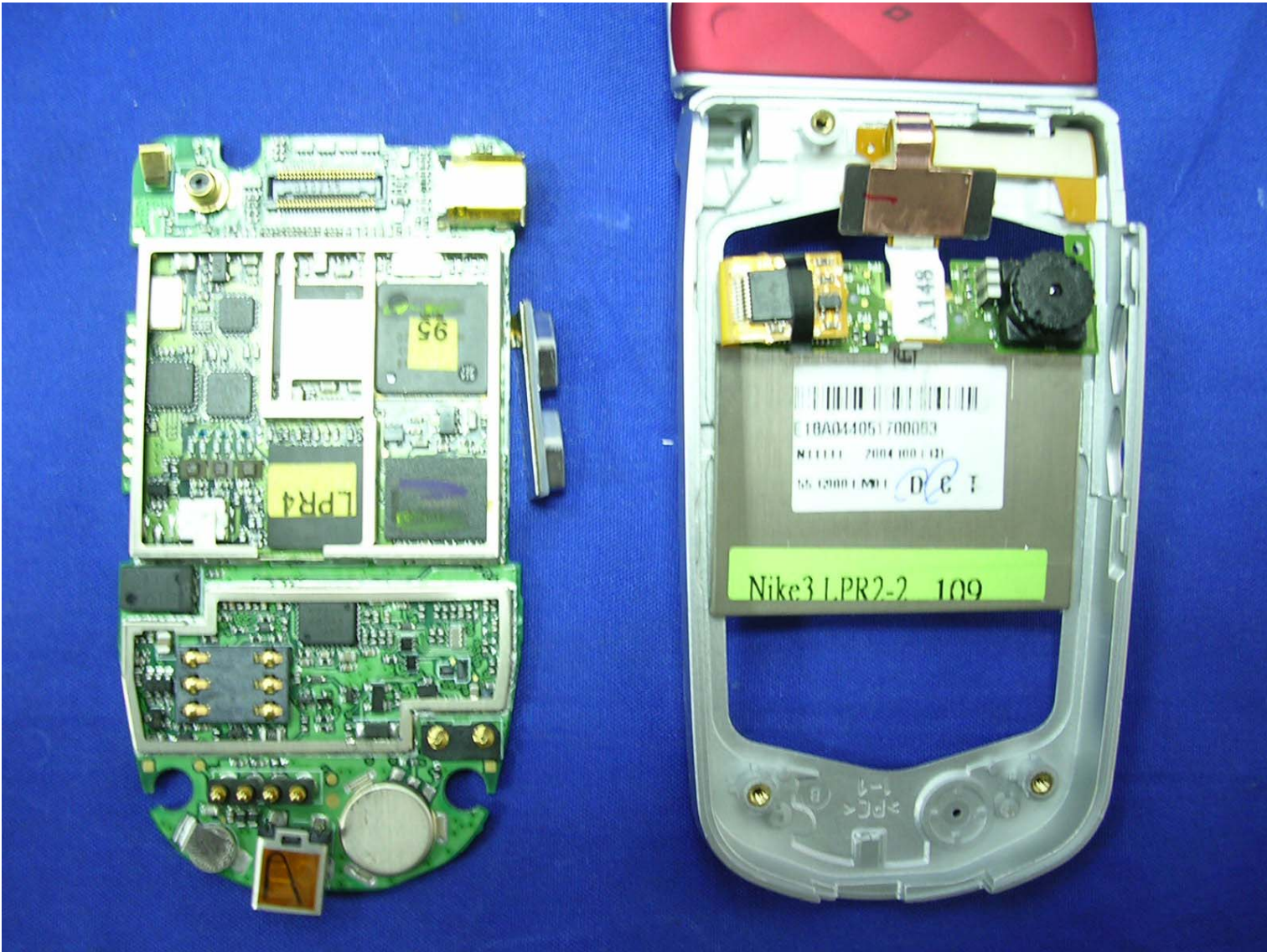


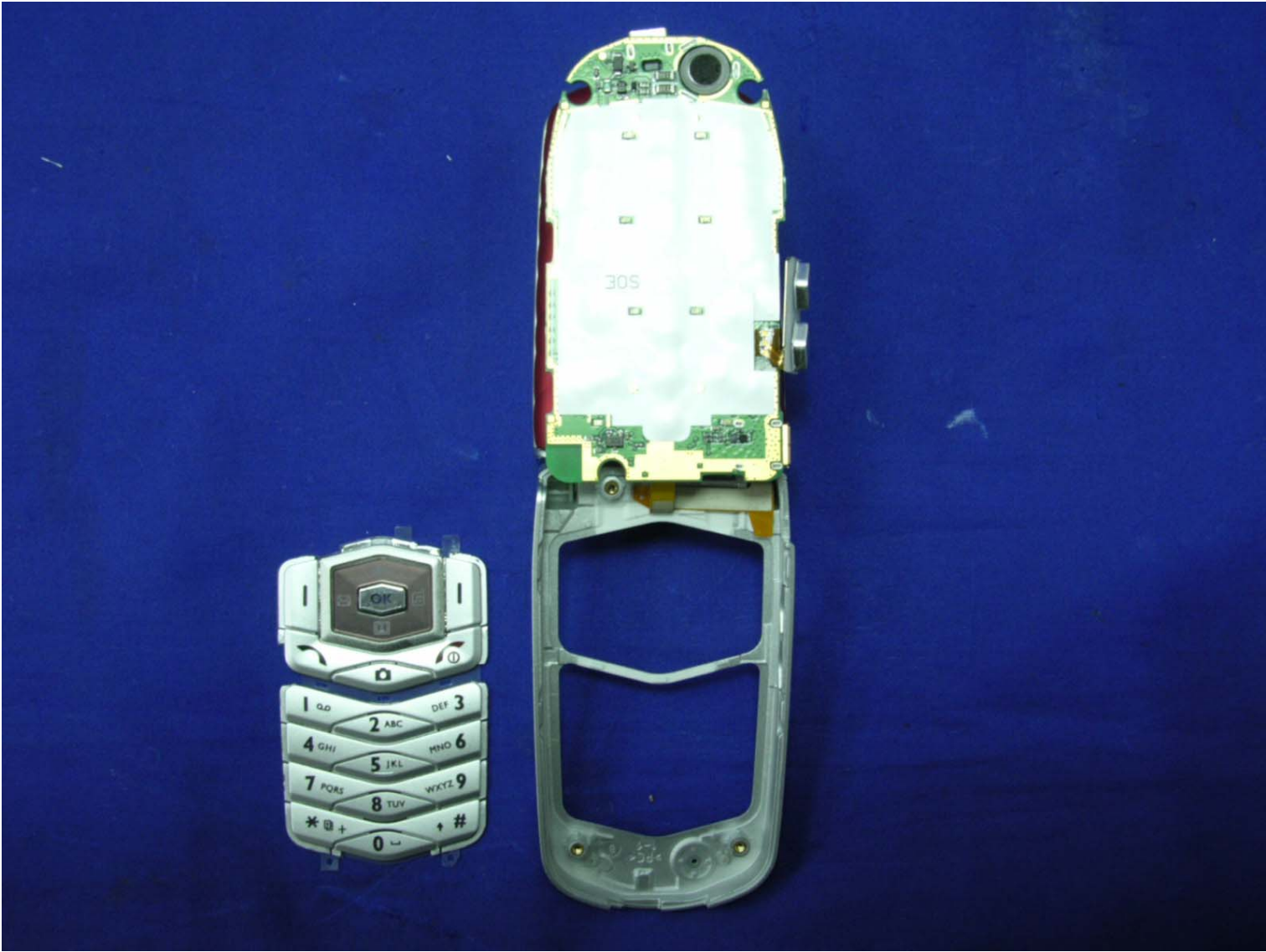
E18A044051700063
N11111 2004 1001 (D)
55.69001.M01 *D C T*

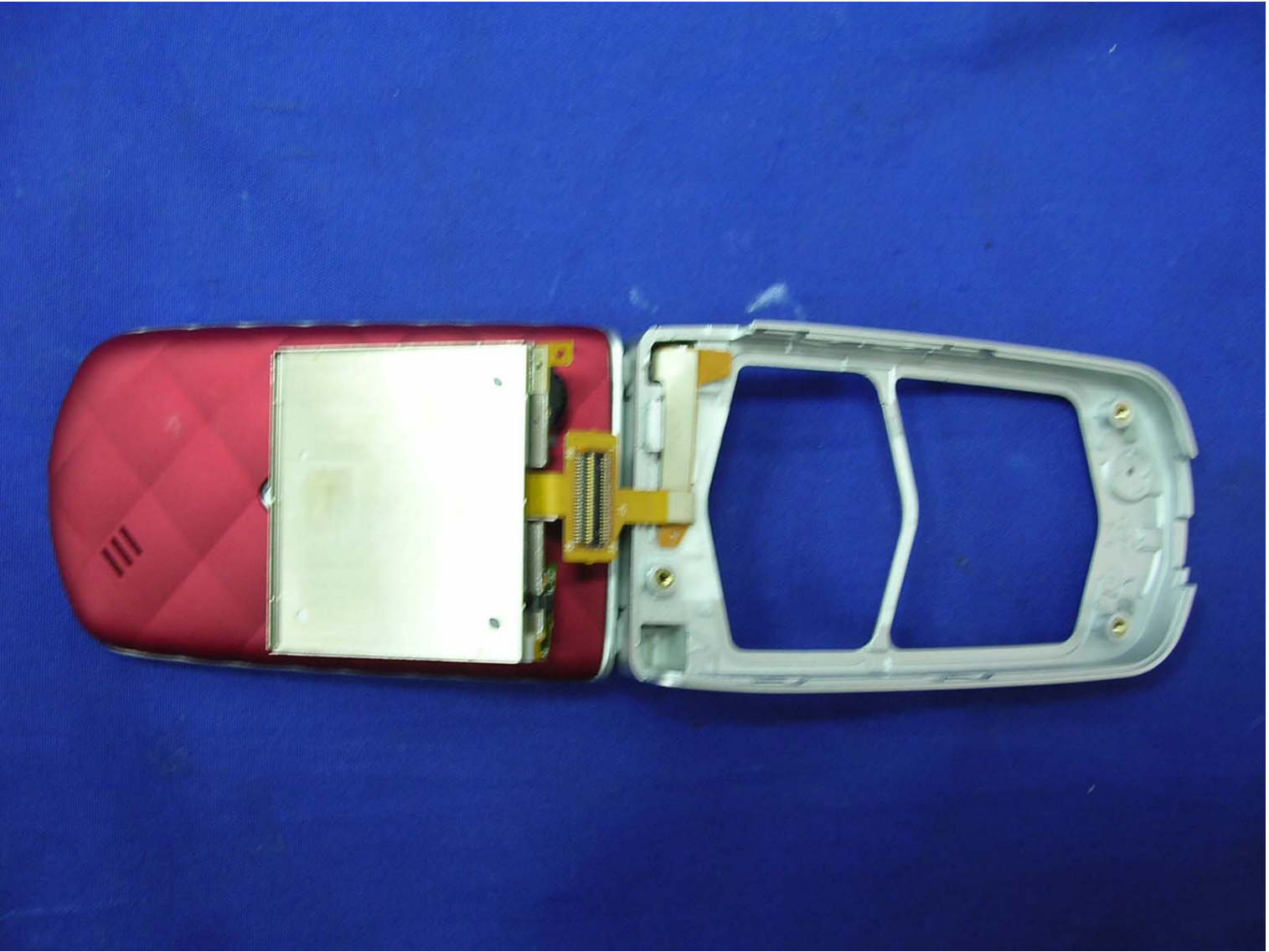
Nike3 LPR2-2 109

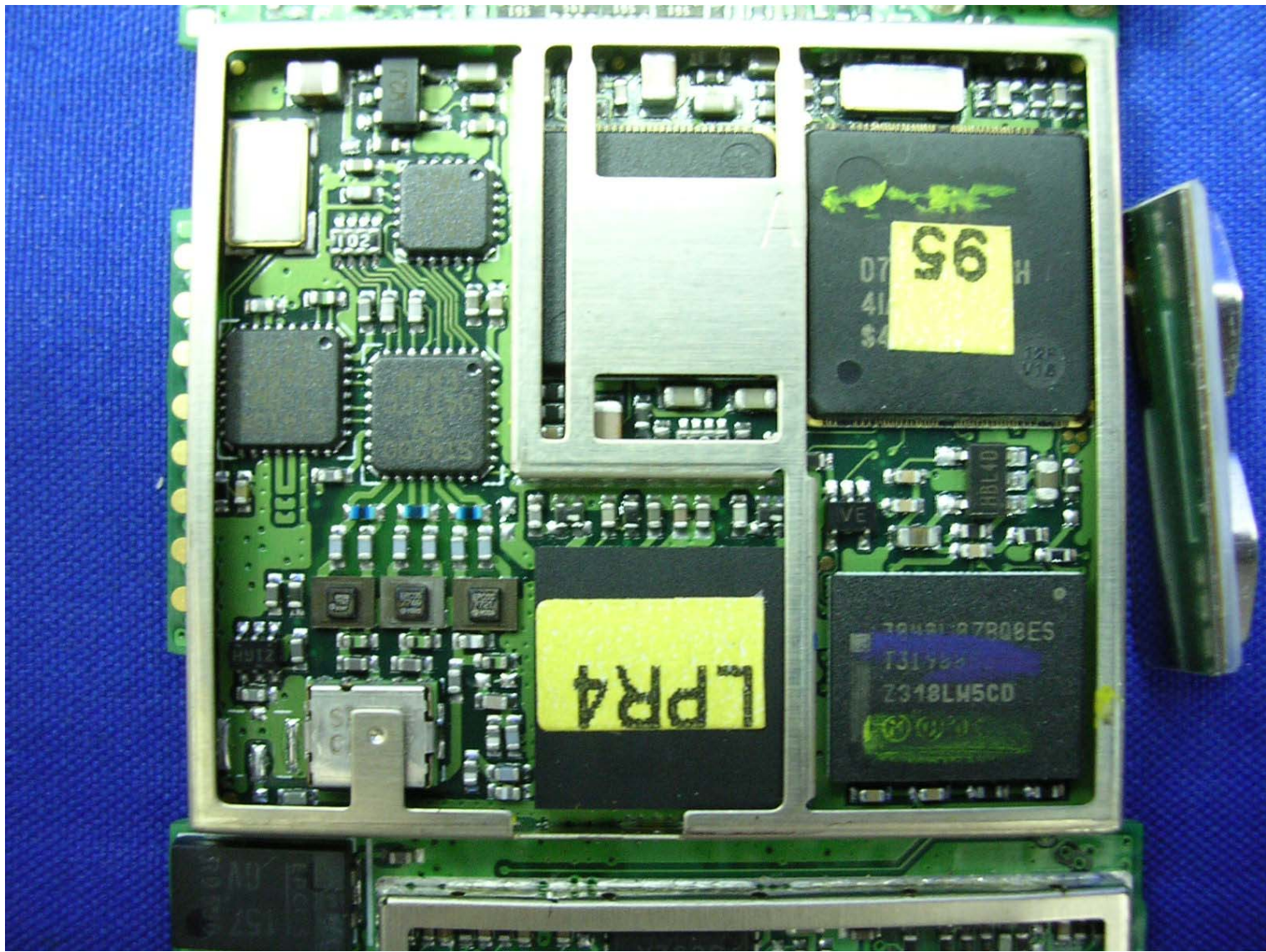
A148



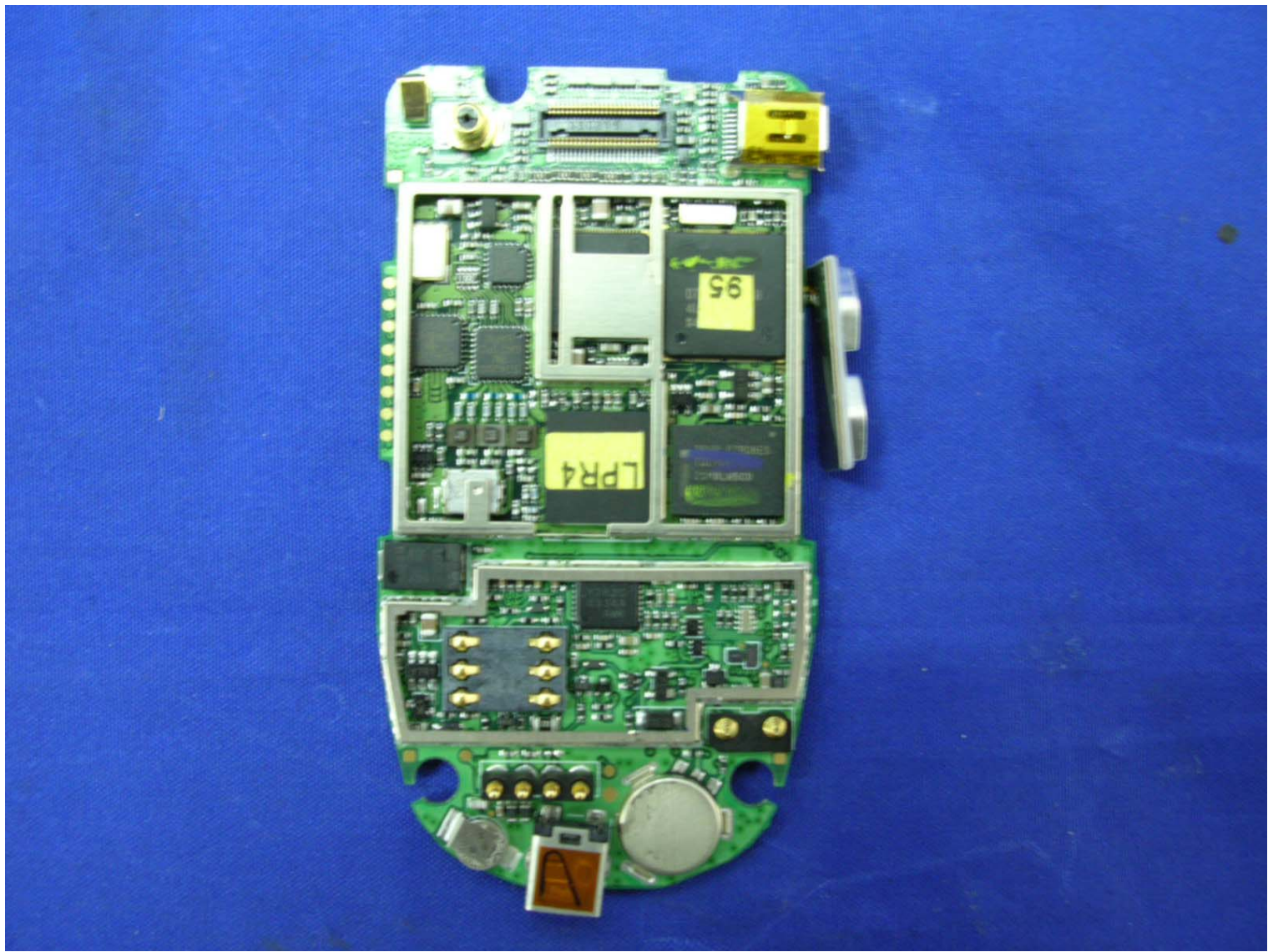


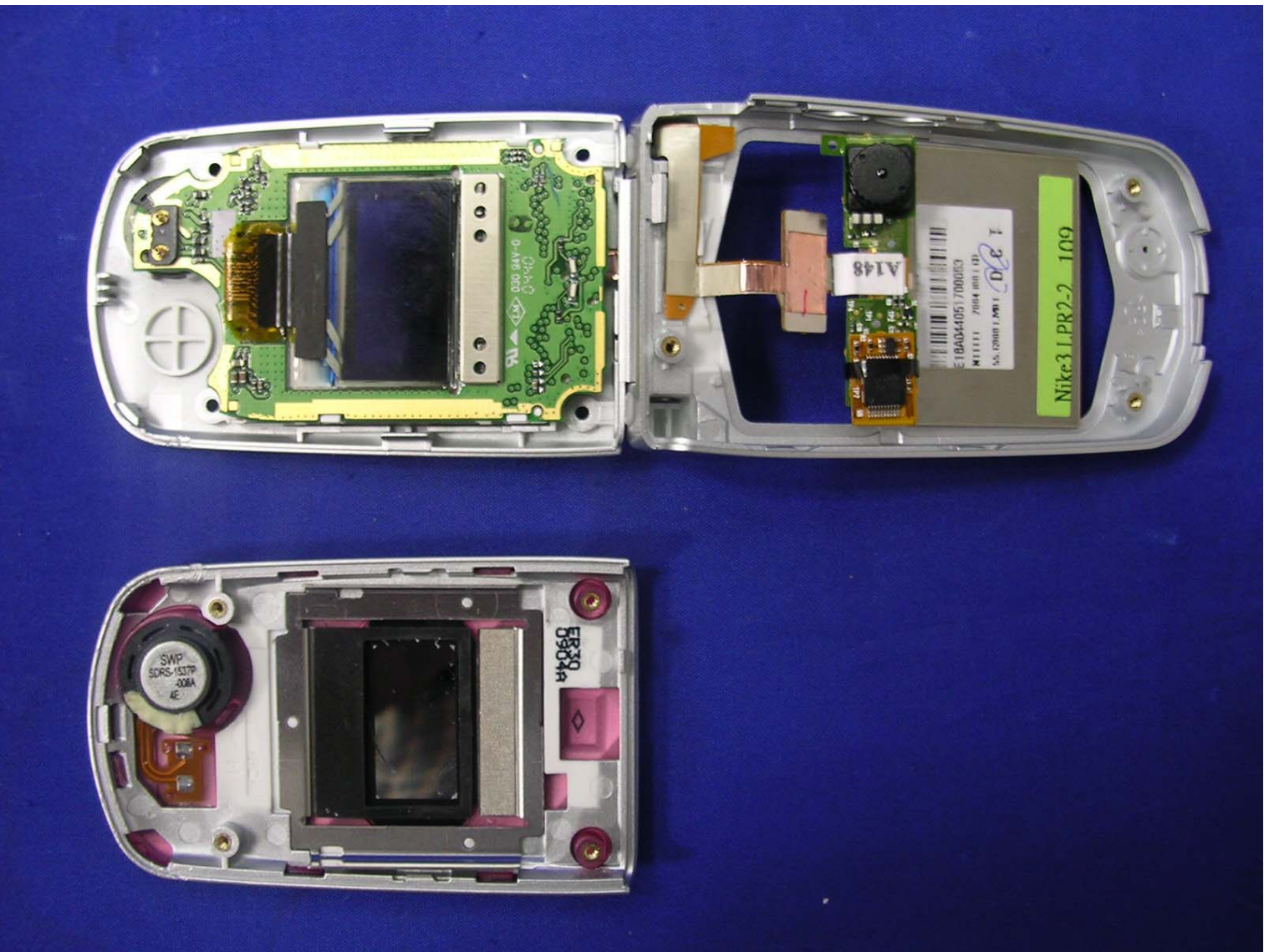


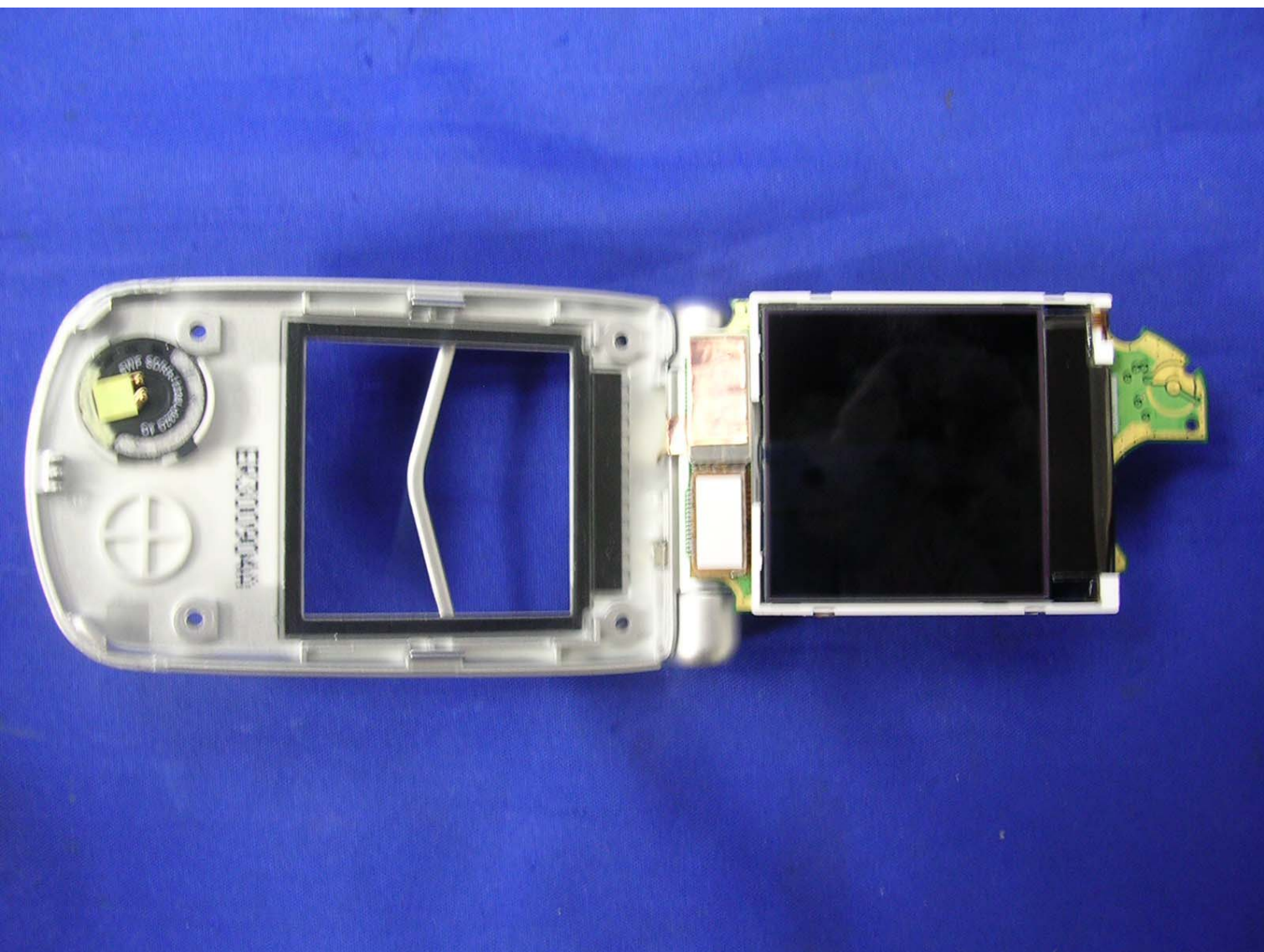




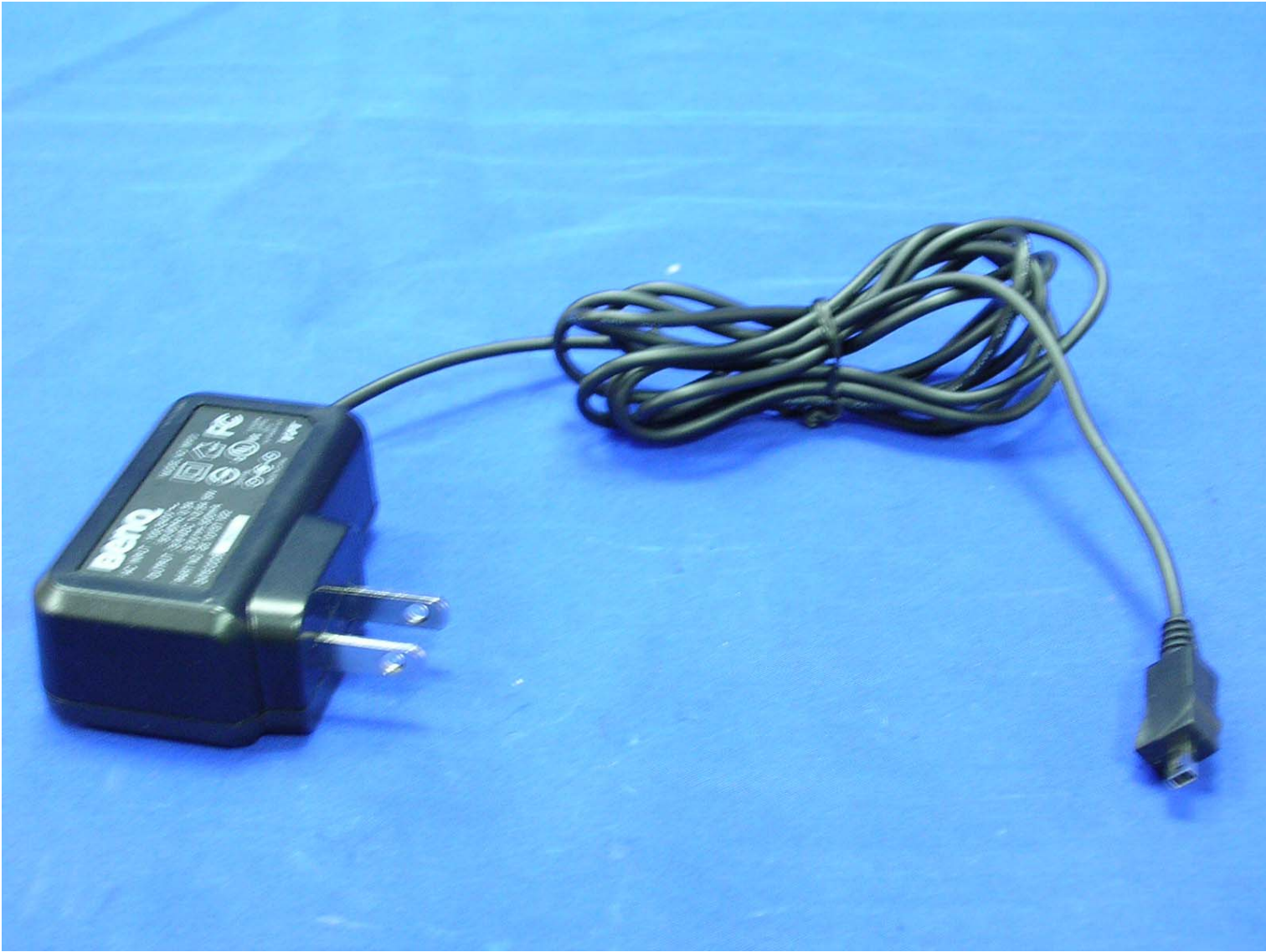












BenQ

AC INPUT : 100-240V ~
50-60Hz 0.3A
OUTPUT : 3-9 VDC 1-0.5A 5W
6.0V = 500mA
PART NO.: 25.10137.122

DATE CODE **0431**

MODEL NO.:MP20



US E132244
LISTED
3210
ITE POWER UNIT

D33159



MADE IN CHINA

TPT

