



BenQ.com

© 2012 BenQ Corporation.
All rights reserved. Rights of modification reserved.

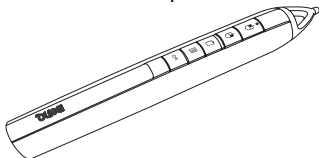
IRM01.001
P/N: 4JJBEO3.001



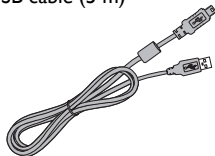
PD03 Interactive Pen Quick Start Guide

Quick Start Guide
Guide de démarrage rapide
Kurzanleitung
Guide rapida
Guía de inicio rápido
Guia de iniciação rápida
Schnabbstartsguide
Краткое руководство
Snelgids
Skrócona instrukcja obsługi
Hızlı başlangıç kılavuzu
Průvodce rychlým používáním
คู่มือเริ่มต้นใช้งานอย่างย่อ
快速使用指南
快速使用指南
クイックスタートガイド
빠른 시작 안내서
دليل البدء السريع

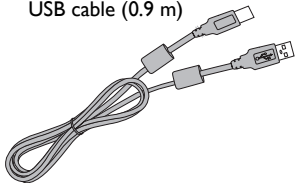
PointDraw 3.0 pen



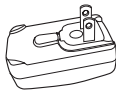
USB cable (5 m)



USB cable (0.9 m)



Adaptor



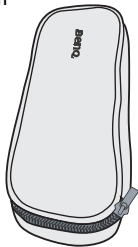
RF dongle



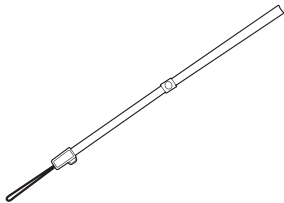
Charging cradle



Pouch



Wrist strip



Quick start guide



License key card



Table of contents

English	4
Français	16
Deutsch	28
Italiano.....	40
Español	52
Portuguê.....	64
Svenska.....	76
Русский.....	88
Nederlands.....	101
Polski.....	113
Türkçe	125
Čeština	137
ไทย	149
繁體中文.....	161
简体中文.....	172
日本語.....	183
한국어.....	195
ي س ب ا ر ع	207

PointDraw 3.0 pen features

Left mouse button/Used as an up key when the PointDraw OSD is activated

Right mouse button/Used as a down key when the PointDraw OSD is activated

Activates the selected OSD menu item

Activates the PointDraw On-Screen Display (OSD) menu

Changeable pen tip

Connection indicator
Solid Blue: Paired with BenQ projector
Blinking: Attempt to pair with the projector

Battery status indicator
Solid Red: Battery charging
Blinking: Low battery

Wrist strap hole

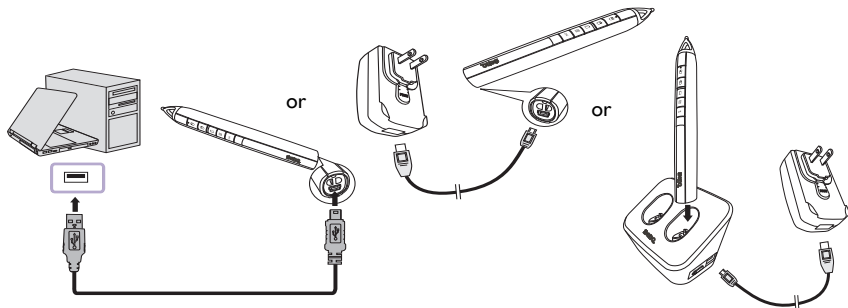
Sensor

Power On/Off switch

USB connector

Battery charging

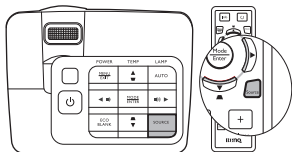
The charging time varies by using different equipment. See the table below for details.



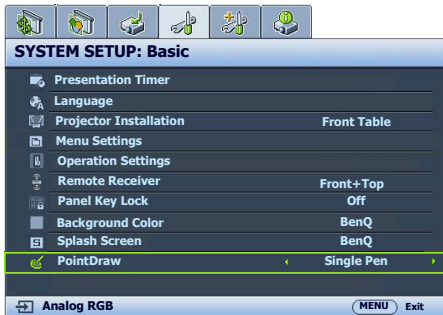
Equipment	Charging time (hour)	Duration of pen use (hour)
Computer	2~2.5	20
Power adaptor	1.5~2	
Cradle (single pen)	1.5~2	
Cradle (dual pen)	2.5~3	

- △ Do not disassemble the PointDraw pen yourself. Refer all servicing to qualified service personnel.
- △ The lithium battery is only rechargeable, and not user replaceable. Not user serviceable.

6



Select an appropriate input signal from among Computer 1/Computer 2/HDMI.

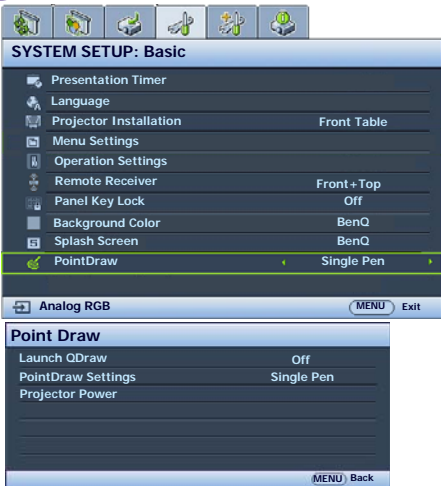


To use one or two pens, go to the “System Setup: Basic > PointDraw” projector OSD menu and select “Dual Pen” or “Single Pen”.


🗨️ Single Pen

For optimized interactive speed, it is recommended to select a single pen in PointDraw settings.


6 (Continued)

☐ **Dual Pen**

Please go to “System Setup: Basic” on the projector OSD menu and change the PointDraw to “Dual Pen” for dual pen

function activation. Select  on QDraw 3 software and enter dual pen mode.

☐ **When switching between PointDraw modes, it will take about 30 seconds to re-flash modes, the delay time depends on computer response time.**

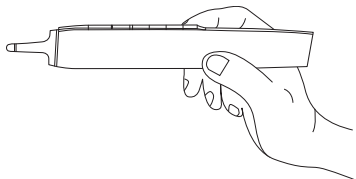
When "Dual Pen" or "Single Pen" is selected in the "System Setup: Basic > PointDraw" projector OSD menu, PointDraw OSD menu can be activated by pressing  on the PointDraw pen.

☐ **Launch QDraw** Selecting “On” launches QDraw 3 software.

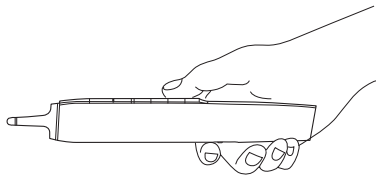
☐ **PointDraw Settings** Switches between “Single Pen” mode or “Dual Pen” mode. Settings in QDraw 3 software will be changed simultaneously.

☐ **Projector Power** Turns off the projector.

How to hold the PointDraw 3.0 pen



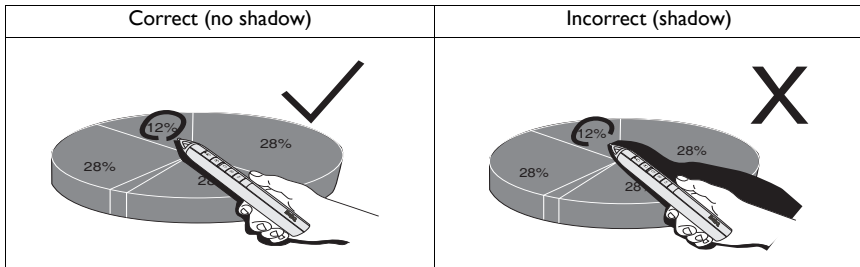
or

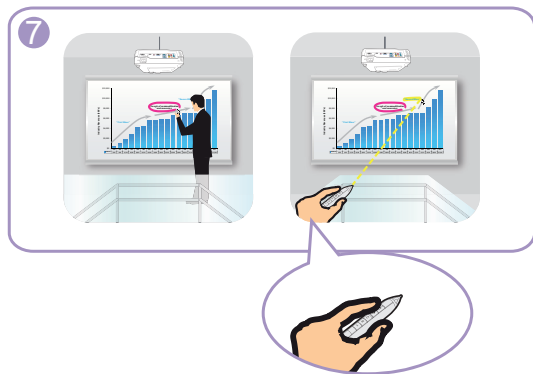


- ☐ If the PointDraw pen is far away from the screen, be sure to press the left mouse button to click and drag.

Avoid shadows!

The PointDraw pen won't work if its tip is in a shadow or if it is pointing at a shadow:





The pen can be used either touching on the screen or away from the screen.

Troubleshooting

When the pen does not work or works intermittently	Check the battery status - if the battery is blinking red, please connect the pen to the charging cradle, or to the power adaptor via a USB cable to charge.
	Avoid direct strong CCFL light onto the projected image in a short distance. Adjust the angle of incident light smaller to reduce the frequency interference.
	If the room is brightly lit, reduce the room ambient light.
	Do not use the computer mouse at the same time while using PointDraw pen. Point the pen away from the projected screen when the computer mouse is being used.
When the pen is working not as responsive	Please ensure that the pen is not pointing at a shadow and make sure the pen tip is not under a shadow.
	It is recommended to use PointDraw Single pen mode when only one pen is being used at the same time for optimized interactive writing speed. Change the setting from the projector OSD menu System Setup: Basic > PointDraw or via the PointDraw pen menu key.

When the mouse cursor is in the wrong place of the projected image or is restricted to part of the image	Please make sure the projector is displaying computer source input. To change the source, press the SOURCE button on the projector or remote control.
Others	SmartEco lamp mode and 3D mode are not active while PointDraw setting is On. This will ensure the best PointDraw interactive performance possible.

Specifications

I. Pen (PD03)

Operation frequency	2.4 GHz ISM Band
Rechargeable battery	1 pcs
Model name	UR14500P
Normal voltage	3.7V
Normal capacity	800 mAh
Storage temperature	-10°C -60°C
Operation temperature	0°C -40°C
Operation humidity	20%-85% (ambient temperature < 40°C)
Power consumption	DC 3.7V, 35 mA (operation)
Dimensions	Length*Diameter=186*26 (mm)
Weight	72g

2. Power adaptor

AC input	100~240V AC, 50~60 Hz, 0.3 A max.
DC input	5V DC, 2 A

3. Charging cradle

Power on/off	5V USB power on/off switch
--------------	----------------------------

4. RF dongle

Parameter	Performance	Remarks
Working voltage	5V	Over low voltage will possibly cause communication error.
Working temperature	-20°C-80°C	
Working humidity	10%-90%	Without condensation
Dimension LxWxH	42.5x31.5x6	Unit: mm; dimension tolerance meets GB/T1804-m

LED Indicator

1.1 Interactive pen LED

Function	LED Amber (Red)	LED Blue
Searching for projector signal (pairing)*	Off	0.5 sec on/0.5 sec off
In use (connected)	Off	Solid on

Low battery (20% power)	Flash 3 times (0.5 sec LED on, 0.5 sec LED off for 3 times) between 5-second interval (LED off).	Solid on
Low battery (10% power)	Flash 3 times (0.5 sec LED on, 0.5 sec LED off for 3 times) between 5-second interval (LED off)	Off
Charging (power off and standby)	Solid on	Off
Fully charged	Off	Based on pen operating status at that time
Standby**	Off	Off
Wake up and searching	Off	0.5 sec on/0.5 sec off

Note:

***By pressing any key or nib to start pairing between the pen and projector. The pairing must be done within 5 sec; the pen will go into standby mode when it's unable to be paired in 10 sec.**

**** When pairing is interrupted during usage (for example, when the pen is not pointed toward the projected image), the pen will go to standby mode in 120 sec.**

1.2 Cradle LED

Function	LED Blue
Power on	Solid on
Power off	Off

1.3 RF dongle LED

LED Behavior	Status
Blinks blue every 1.5 seconds	Wireless channel search OR Dongle is synchronizing with interactive device(s)
Blinks blue every 3 seconds	Wireless channel selected to use for synchronization with interactive device(s)
Blinks blue every 6 seconds	Dongle successfully synchronized with interactive device(s)
Blinks blue every 10 seconds	Wireless channel selected to use for synchronization with interactive device(s) is noisy