

Test Laboratory: Compliance Certification Services
 File Name: [D1900V2 SN5d043_082304.da4](#)

DUT: Dipole 1900 MHz; Type: D1900V2; Serial: D1900V2 - SN:5d043
Program Name: System Performance Check at 1900 MHz
Ambient Temp.: 24.0 deg. C; Liquid Temp.: 23.0 deg. C

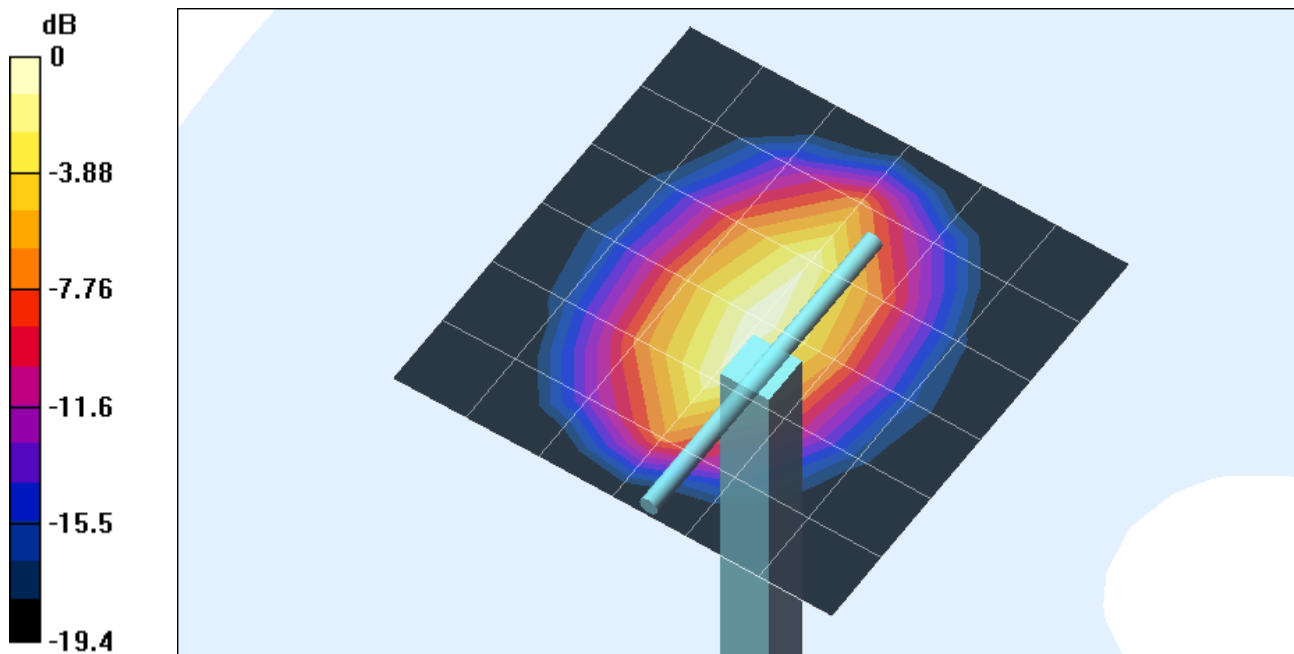
Communication System: CW; Frequency: 1900 MHz; Duty Cycle: 1:1
 Medium parameters used: $f = 1900$ MHz; $\sigma = 1.44$ mho/m; $\epsilon_r = 40$; $\rho = 1000$ kg/m³
 Phantom section: Flat Section

DASY4 Configuration:

- Probe: EX3DV3 - SN3531; ConvF(8.98, 8.98, 8.98); Calibrated: 7/18/2004
- Sensor-Surface: 1.5mm (Mechanical Surface Detection)
- Electronics: DAE3 Sn500; Calibrated: 12/23/2003
- Phantom: SAM 1; Type: SAM 1; Serial: 1185
- Measurement SW: DASY4, V4.2 Build 44; Postprocessing SW: SEMCAD, V1.8 Build 112

d=10mm; Pin=250mW/Area Scan (7x7x1): Measurement grid: dx=15mm, dy=15mm
 Reference Value = 109.7 V/m; Power Drift = -0.0 dB
 Maximum value of SAR (measured) = 16.3 mW/g

d=10mm; Pin=250mW/Zoom Scan (5x5x7)/Cube 0: Measurement grid: dx=7.5mm, dy=7.5mm, dz=5mm
 Reference Value = 109.7 V/m; Power Drift = -0.0 dB
 Maximum value of SAR (measured) = 16.2 mW/g
 Peak SAR (extrapolated) = 19.9 W/kg
SAR(1 g) = 10.3 mW/g; SAR(10 g) = 5.31 mW/g



0 dB = 16.2mW/g

Test Laboratory: Compliance Certification Services

File Name: [D1900V2 SN5d043_082304.da4](#)

DUT: Dipole 1900 MHz; Type: D1900V2; Serial: D1900V2 - SN:5d043

Program Name: System Performance Check at 1900 MHz

Communication System: CW; Frequency: 1900 MHz; Duty Cycle: 1:1

Medium parameters used: $f = 1900$ MHz; $\sigma = 1.44$ mho/m; $\epsilon_r = 40$; $\rho = 1000$ kg/m³

Phantom section: Flat Section

d=10mm; Pin=250mW/Z Scan (1x1x51): Measurement grid: dx=20mm, dy=20mm, dz=2mm

Reference Value = 109.7 V/m; Power Drift = -0.0 dB

Maximum value of SAR (measured) = 13.7 mW/g

