



ANSI/IEEE Std. C95.1-1992 / RSS-102

in accordance with the requirements of
FCC Report and Order: ET Docket 93-62, and OET Bulletin 65 Supplement C

IC Report and Order: SSI/DRB-TP-D01-030



FCC/IC TEST REPORT

For

PDA

Model: TNJ32

Trade Name: Terminal

Issued to for FCC

Trimble Navigation Ltd.
935 Stewart Drive, Sunnyvale, CA 94088-3642 U.S.A

Issued to for IC

Trimble Navigation Ltd.
935 Stewart Drive, Sunnyvale California 94085 United States

Issued by

Compliance Certification Services Inc.
No. 11, Wugong 6th Rd., Wugu Industrial Park,
Taipei Hsien, 248 Taiwan.
<http://www.ccsrf.com>
service@ccsrf.com



Issued Date: January 14, 2012

Note: This report shall not be reproduced except in full, without the written approval of Compliance Certification Services Inc. This document may be altered or revised by Compliance Certification Services Inc. personnel only, and shall be noted in the revision section of the document.



Revision History

Rev.	Issue Date	Revisions	Effect Page	Revised By
00	January 14, 2012	Initial Issue	ALL	Peach Chang



TABLE OF CONTENTS

1. CERTIFICATE OF COMPLIANCE (SAR EVALUATION)	4
2. EUT DESCRIPTION	5
3. REQUIREMENTS FOR COMPLIANCE TESTING DEFINED BY THE FCC	6
4. DOSIMETRIC ASSESSMENT SETUP	6
4.1 MEASUREMENT SYSTEM DIAGRAM.....	7
4.2 SYSTEM COMPONENTS	8
5. EVALUATION PROCEDURES	11
6. MEASUREMENT UNCERTAINTY	15
7. EXPOSURE LIMIT	17
8. EUT ARRANGEMENT	18
8.1 ANTHROPOMORPHIC HEAD PHANTOM.....	18
8.2 DEFINITION OF THE “CHEEK/TOUCH” POSITION	19
8.3 DEFINITION OF THE “TILTED” POSITION.....	20
9. MEASUREMENT RESULTS	21
9.1 TEST LIQUIDS CONFIRMATION.....	21
9.2 SYSTEM PERFORMANCE CHECK.....	24
9.3 EUT TUNE-UP PROCEDURES	26
9.4 RF POWER OUTPUT FOR UMTS REL99.....	27
9.5 RF POWER OUTPUT FOR UMTS REL 6 HSDPA.....	28
9.6 RF POWER OUTPUT UMTS REL 6 HSPA (HSDPA & HSUPA)	30
9.7 SAR MEASUREMENT RESULTS	35
10. EUT PHOTO	40
11. EQUIPMENT LIST & CALIBRATION STATUS	41
12. FACILITIES	42
13. REFERENCES	42
14. ATTACHMENTS	43



1. CERTIFICATE OF COMPLIANCE (SAR EVALUATION)

Applicant(FCC): Trimble Navigation Ltd.
935 Stewart Drive, Sunnyvale, CA 94088-3642 U.S.A

Applicant(IC): 935 Stewart Drive, Sunnyvale California 94085 United States

Equipment Under Test: PDA

Trade Name: Terminal

Model Number: TNJ32

Date of Test: January 02 ~ 04, 2012

Device Category: PORTABLE DEVICES

Exposure Category: GENERAL POPULATION/UNCONTROLLED EXPOSURE

APPLICABLE STANDARDS	
STANDARD	
FCC IC	FCC OET 65 Supplement C IC RSS-102
Deviation from Applicable Standard	
None	
TEST RESULT	
No non-compliance noted	
The device was tested by Compliance Certification Services Inc. in accordance with the measurement methods and procedures specified in OET Bulletin 65 Supplement C (Edition 01-01). The test results in this report apply only to the tested sample of the stated device/equipment. Other similar device/equipment will not necessarily produce the same results due to production tolerance and measurement uncertainties.	
The device was tested by Compliance Certification Services Inc. in accordance with the measurement methods and procedures specified in IC RSS-102. The test results in this report apply only to the tested sample of the stated device/equipment. Other similar device/equipment will not necessarily produce the same results due to production tolerance and measurement uncertainties.	

Approved by:

Jason Lin

Jason Lin
Section Manager
Compliance Certification Services Inc.

Tested by:

Anson Lu

Anson Lu
Test Engineer
Compliance Certification Services Inc



2. EUT DESCRIPTION

Product	PDA	
Model Number	TNJ32	
Trade Name	Terminal	
Model Discrepancy	N/A	
Frequency Range	GSM / GPRS / EGPRS: 850: 824.2 ~ 848.8 MHz GSM / GPRS / EGPRS: 1900: 1850.2 ~ 1909.8 MHz 802.11b / g: 2412 ~ 2462 MHz Bluetooth: 2402 ~ 2480 MHz	
Transmit Power(Average)	850 Band: GSM 850: 32.82 dBm GPRS 850: 24.10 dBm EDGE850: 20.89 dBm	1900 Band: GSM 1900: 28.80 dBm GPRS 1900: 20.10 dBm EDGE1900: 18.79 dBm
	2.4GHz: 802.11b: 15.46 dBm 802.11g: 12.28 dBm	Bluetooth: Bluetooth (GFSK): -3.84 dBm Bluetooth (8DPSK): -8.92 dBm
Max. SAR (1g):	GSM 850: Head: 0.431 W/kg (Left head Cheek position) Body: 0.440 W/kg (Body position) GPRS: 0.287 W/kg (Body position) PCS1900: Head: 0.173g (Left head Cheek position) Body: 0.294kg (Body position) GPRS: 0.042kg (Body position) WCDMA band II : Head: 0.198(Right head Cheek position) Body: 0.705kg (Body position) WCDMA band V Head: 0.091 (Right head Cheek position) Body: 0.722 (Body position)	
Modulation Technique	GSM / PCS: GMSK WCDMA: QPSK 802.11b: Direct Sequence Spread Spectrum (DSSS) 802.11g: Orthogonal Frequency Division Multiplexing (OFDM) Bluetooth: GFSK for 1Mbps; $\pi/4$ -DQPSK for 2Mbps; 8DPSK for 3Mbps	
Antenna Specification	Antenna. Type: GSM/WCDMA: PCB antenna WLAN: PIFA antenna, Bluetooth: PIFA antenna	
Battery	Model: 707-00008-00A, Rating: 3.7VDC, 3060mAh, 11.32Wh	

Remark: The sample selected for test was engineering sample that approximated to production product and was provided by manufacturer.



3. REQUIREMENTS FOR COMPLIANCE TESTING DEFINED BY THE FCC

The US Federal Communications Commission has released the report and order "Guidelines for Evaluating the Environmental Effects of RF Radiation", ET Docket No. 93-62 in August 1996. The order requires routine SAR evaluation prior to equipment authorization of portable transmitter devices, including portable telephones. For consumer products, the applicable limit is 1.6 mW/g for an uncontrolled environment and 8.0 mW/g for an occupational/controlled environment as recommended by the ANSI/IEEE standard C95.1-1992. According to the Supplement C of OET Bulletin 65 "Evaluating Compliance with FCC Guide-lines for Human Exposure to Radio frequency Electromagnetic Fields", released on Jun 29, 2001 by the FCC, the device should be evaluated at maximum output power (radiated from the antenna) under "worst-case" conditions for normal or intended use, incorporating normal antenna operating positions, device peak performance frequencies and positions for maximum RF energy coupling.

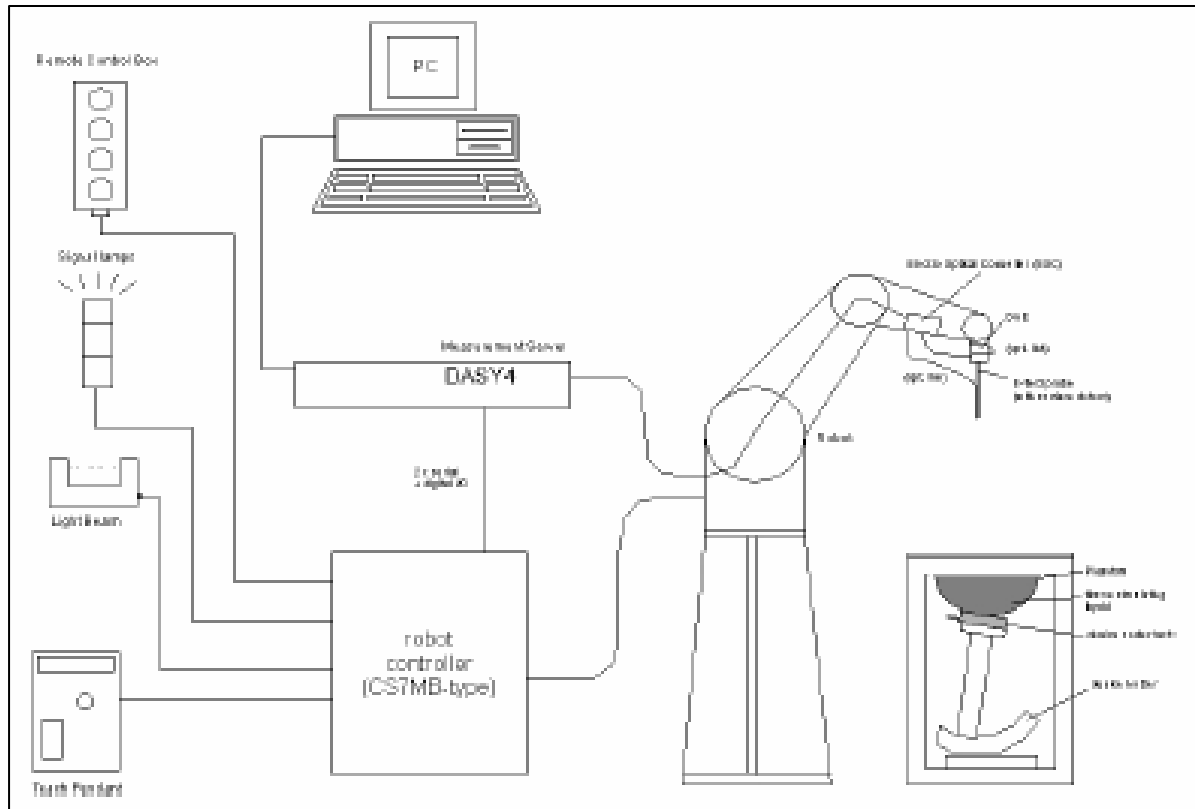
4. DOSIMETRIC ASSESSMENT SETUP

These measurements were performed with the automated near-field scanning system DASY4 from Schmid & Partner Engineering AG (SPEAG). The system is based on a high precision robot (working range greater than 0.9 m), which positions the probes with a positional repeatability of better than ± 0.02 mm. Special E- and H-field probes have been developed for measurements close to material discontinuity, the sensors of which are directly loaded with a Schottky diode and connected via highly resistive lines to the data acquisition unit. The SAR measurements were conducted with the dosimetric probe EX3DV4-SN:3554 (manufactured by SPEAG), designed in the classical triangular configuration and optimized for dosimetric evaluation. The probe has been calibrated according to the procedure described in [7] with accuracy of better than $\pm 10\%$. The spherical isotropy was evaluated with the procedure described in [8] and found to be better than ± 0.25 dB. The phantom used was the SAM Twin Phantom as described in FCC supplement C, IEE P1528 and CENELEC EN50361.

The Tissue simulation liquid used for each test is in according with the FCC OET65 supplement C as listed below.

<i>Ingredients (% by weight)</i>	<i>Frequency (MHz)</i>									
	<i>450</i>		<i>835</i>		<i>915</i>		<i>1900</i>		<i>2450</i>	
<i>Tissue Type</i>	<i>Head</i>	<i>Body</i>	<i>Head</i>	<i>Body</i>	<i>Head</i>	<i>Body</i>	<i>Head</i>	<i>Body</i>	<i>Head</i>	<i>Body</i>
<i>Water</i>	<i>38.56</i>	<i>51.16</i>	<i>41.45</i>	<i>52.4</i>	<i>41.05</i>	<i>56.0</i>	<i>54.9</i>	<i>40.4</i>	<i>62.7</i>	<i>73.2</i>
<i>Salt (NaCl)</i>	<i>3.95</i>	<i>1.49</i>	<i>1.45</i>	<i>1.4</i>	<i>1.35</i>	<i>0.76</i>	<i>0.18</i>	<i>0.5</i>	<i>0.5</i>	<i>0.04</i>
<i>Sugar</i>	<i>56.32</i>	<i>46.78</i>	<i>56.0</i>	<i>45.0</i>	<i>56.5</i>	<i>41.76</i>	<i>0.0</i>	<i>58.0</i>	<i>0.0</i>	<i>0.0</i>
<i>HEC</i>	<i>0.98</i>	<i>0.52</i>	<i>1.0</i>	<i>1.0</i>	<i>1.0</i>	<i>1.21</i>	<i>0.0</i>	<i>1.0</i>	<i>0.0</i>	<i>0.0</i>
<i>Bactericide</i>	<i>0.19</i>	<i>0.05</i>	<i>0.1</i>	<i>0.1</i>	<i>0.1</i>	<i>0.27</i>	<i>0.0</i>	<i>0.1</i>	<i>0.0</i>	<i>0.0</i>
<i>Triton X-100</i>	<i>0.0</i>	<i>0.0</i>	<i>0.0</i>	<i>0.0</i>	<i>0.0</i>	<i>0.0</i>	<i>0.0</i>	<i>0.0</i>	<i>36.8</i>	<i>0.0</i>
<i>DGBE</i>	<i>0.0</i>	<i>0.0</i>	<i>0.0</i>	<i>0.0</i>	<i>0.0</i>	<i>0.0</i>	<i>44.92</i>	<i>0.0</i>	<i>0.0</i>	<i>26.7</i>
<i>Dielectric Constant</i>	<i>43.42</i>	<i>58.0</i>	<i>42.54</i>	<i>56.1</i>	<i>42.0</i>	<i>56.8</i>	<i>39.9</i>	<i>54.0</i>	<i>39.8</i>	<i>52.5</i>
<i>Conductivity (S/m)</i>	<i>0.85</i>	<i>0.83</i>	<i>0.91</i>	<i>0.95</i>	<i>1.0</i>	<i>1.07</i>	<i>1.42</i>	<i>1.45</i>	<i>1.88</i>	<i>1.78</i>

4.1 MEASUREMENT SYSTEM DIAGRAM



The DASYS4 system for performing compliance tests consists of the following items:

- A standard high precision 6-axis robot (Stäubli RX family) with controller, teach pendant and software. An arm extension for accommodating the data acquisition electronics (DAE).
- A dosimetric probe, i.e., an isotropic E-field probe optimized and calibrated for usage in tissue simulating liquid. The probe is equipped with an optical surface detector system.
- A data acquisition electronics (DAE) which performs the signal amplification, signal multiplexing, AD-conversion, offset measurements, mechanical surface detection, collision detection, etc. The unit is battery powered with standard or rechargeable batteries. The signal is optically transmitted to the EOC.
- The Electro-optical converter (EOC) performs the conversion between optical and electrical of the signals for the digital communication to the DAE and for the analog signal from the optical surface detection. The EOC is connected to the measurement server.
- The function of the measurement server is to perform the time critical tasks such as signal filtering, control of the robot operation and fast movement interrupts.
- A probe alignment unit which improves the (absolute) accuracy of the probe positioning.
- A computer operating Windows 2000 or Windows XP.
- DASYS4 software.
- Remote control with teach pendant and additional circuitry for robot safety such as warning lamps, etc.
- The SAM twin phantom enabling testing left-hand and right-hand usage.
- The device holder for handheld mobile phones.
- Tissue simulating liquid mixed according to the given recipes.
- Validation dipole kits allowing validating the proper functioning of the system.]



4.2 SYSTEM COMPONENTS

DASY4/DASY5 Measurement Server



The DASY4/DASY5 measurement server is based on a PC/104 CPU board with a 166MHz low-power Pentium, 32MB chip disk and 64MB RAM. The necessary circuits for communication with either the DAE3 electronic box as well as the 16-bit AD-converter system for optical detection and digital I/O interface are contained on the DASY4/DASY5 I/O-board, which is directly connected to the PC/104 bus of the CPU board.

The measurement server performs all real-time data evaluation for field measurements and surface detection, controls robot movements and handles safety operation.



The PC-operating system cannot interfere with these time critical processes. All connections are supervised by a watchdog, and disconnection of any of the cables to the measurement server will automatically disarm the robot and disable all program-controlled robot movements. Furthermore, the measurement server is equipped with two expansion slots which are reserved for future applications. Please note that the expansion slots do not have a standardized pinout and therefore only the expansion cards provided by SPEAG can be inserted. Expansion cards from any other supplier could seriously damage the measurement server. Calibration: No calibration required.

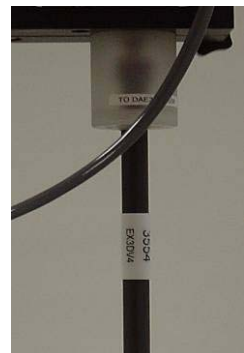
Data Acquisition Electronics (DAE)

The data acquisition electronics (DAE3) consists of a highly sensitive electrometer grade preamplifier with auto-zeroing, a channel and gain-switching multiplexer, a fast 16 bit AD converter and a command decoder and control logic unit. Transmission to the measurement server is accomplished through an optical downlink for data and status information as well as an optical uplink for commands and the clock. The mechanical probe mounting device includes two different sensor systems for frontal and sideways probe contacts. They are used for mechanical surface detection and probe collision detection. The input impedance of the DAE3 box is 200M Ω ; the inputs are symmetrical and floating. Common mode rejection is above 80 dB.



EX3DV4 Isotropic E-Field Probe for Dosimetric Measurements

- Construction:** Symmetrical design with triangular core
Built-in shielding against static charges
PEEK enclosure material (resistant to organic solvents, e.g., DGBE)
- Calibration:** Basic Broad Band Calibration in air: 10-3000 MHz.
Conversion Factors (CF) for HSL 900 and HSL 1800
CF-Calibration for other liquids and frequencies upon request.
- Frequency:** 10 MHz to > 6 GHz; Linearity: ± 0.2 dB (30 MHz to 3 GHz)
- Directivity:** ± 0.3 dB in HSL (rotation around probe axis)
 ± 0.5 dB in HSL (rotation normal to probe axis)
- Dynamic Range:** 10 μ W/g to > 100 mW/g; Linearity: ± 0.2 dB
(noise: typically < 1 μ W/g)





- Dimensions:** Overall length: 330 mm (Tip: 20 mm)
Tip diameter: 2.5 mm (Body: 12 mm)
Distance from probe tip to dipole centers: 1 mm
- Application:** High precision dosimetric measurements in any exposure scenario (e.g., very strong gradient fields). Only probe which enables compliance testing for frequencies up to 6 GHz with precision of better 30%.



Interior of probe

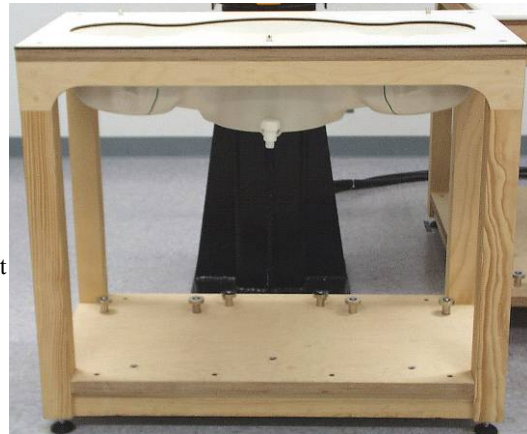
SAM Phantom (V4.0)

Construction: The shell corresponds to the specifications of the Specific Anthropomorphic Mannequin (SAM) phantom defined in IEEE 1528-200X, CENELEC 50361 and IEC 62209. It enables the dosimetric evaluation of left and right hand phone usage as well as body mounted usage at the flat phantom region. A cover prevents evaporation of the liquid. Reference markings on the phantom allow the complete setup of all predefined phantom positions and measurement grids by manually teaching three points with the robot.

Shell Thickness: 2 ± 0.2 mm

Filling Volume: Approx. 25 liters

Dimensions: Height: 810mm; Length: 1000mm; Width: 500mm



SAM Phantom (ELI4)

Description

Construction: Phantom for compliance testing of handheld and body-mounted wireless devices in the frequency range of 30 MHz to 6 GHz. ELI4 is fully compatible with the latest draft of the standard IEC 62209 Part II and all known tissue simulating liquids. ELI4 has been optimized regarding its performance and can be integrated into our standard phantom tables. A cover prevents evaporation of the liquid. Reference markings on the phantom allow installation of the complete setup, including all predefined phantom positions and measurement grids, by teaching three points. The phantom is supported by software version DASY4/DASY5.5 and higher and is compatible with all SPEAG dosimetric probes and dipoles

Shell Thickness: 2.0 ± 0.2 mm (sagging: <1%)

Filling Volume: Approx. 25 liters

Dimensions: Major ellipse axis: 600 mm
Minor axis: 400 mm 500mm





Device Holder for SAM Twin Phantom

Construction: In combination with the Twin SAM Phantom V4.0 or Twin SAM, the Mounting Device (made from POM) enables the rotation of the mounted transmitter in spherical coordinates, whereby the rotation point is the ear opening. The devices can be easily and accurately positioned according to IEC, IEEE, CENELEC, FCC or other specifications. The device holder can be locked at different phantom locations (left head, right head, and flat phantom).



System Validation Kits for SAM Phantom (V4.0)

Construction: Symmetrical dipole with 1/4 balun Enables measurement of feedpoint impedance with NWA Matched for use near flat phantoms filled with brain simulating solutions Includes distance holder and tripod adaptor.

Frequency: 450, 900, 1800, 2450, 5800 MHz

Return loss: > 20 dB at specified validation position

Power capability: > 100 W ($f < 1\text{GHz}$); > 40 W ($f > 1\text{GHz}$)

Dimensions: D450V2: dipole length: 270 mm; overall height: 330 mm
D835V2: dipole length: 161 mm; overall height: 340 mm
D900V2: dipole length: 148.5 mm; overall height: 340 mm
D1800V2: dipole length: 72.5 mm; overall height: 300 mm
D1900V2: dipole length: 67.7 mm; overall height: 300 mm
D1900V3: dipole length: 67.0 mm; overall height: 300 mm
D2450V2: dipole length: 51.5 mm; overall height: 290 mm
D5GHzV2: dipole length: 20.6 mm; overall height: 300 mm



System Validation Kits for ELI4 phantom

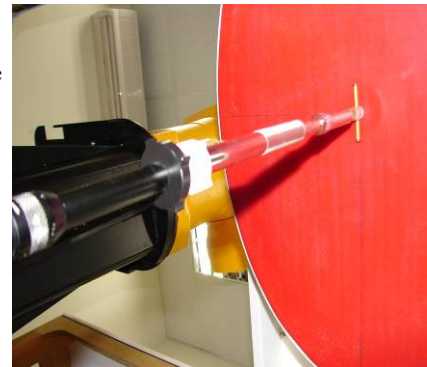
Construction: Symmetrical dipole with 1/4 balun Enables measurement of feedpoint impedance with NWA Matched for use near flat phantoms filled with brain simulating solutions Includes distance holder and tripod adaptor.

Frequency: 450, 900, 1800, 2450, 5800 MHz

Return loss: > 20 dB at specified validation position

Power capability: > 100 W ($f < 1\text{GHz}$); > 40 W ($f > 1\text{GHz}$)

Dimensions: D450V2: dipole length: 270 mm; overall height: 330 mm
D835V2: dipole length: 161 mm; overall height: 340 mm
D900V2: dipole length: 148.5 mm; overall height: 340 mm
D1800V2: dipole length: 72.5 mm; overall height: 300 mm
D1900V2: dipole length: 67.7 mm; overall height: 300 mm
D1900V3: dipole length: 67.0 mm; overall height: 300 mm
D2450V2: dipole length: 51.5 mm; overall height: 290 mm
D5GHzV2: dipole length: 20.6 mm; overall height: 300 mm





5. EVALUATION PROCEDURES

DATA EVALUATION

The DASYS4 post processing software (SEMCAD) automatically executes the following procedures to calculate the field units from the microvolt readings at the probe connector. The parameters used in the evaluation are stored in the configuration modules of the software:

Probe parameters:	- Sensitivity	$Norm_i, a_{i0}, a_{i1}, a_{i2}$
	- Conversion factor	$ConvF_i$
	- Diode compression point	dcp_i
Device parameters:	- Frequency	f
	- Crest factor	cf
Media parameters:	- Conductivity	σ
	- Density	ρ

These parameters must be set correctly in the software. They can be found in the component documents or be imported into the software from the configuration files issued for the DASYS components. In the direct measuring mode of the multi-meter option, the parameters of the actual system setup are used. In the scan visualization and export modes, the parameters stored in the corresponding document files are used.

The first step of the evaluation is a linearization of the filtered input signal to account for the compression characteristics of the detector diode. The compensation depends on the input signal, the diode type and the DC-transmission factor from the diode to the evaluation electronics. If the exciting field is pulsed, the crest factor of the signal must be known to correctly compensate for peak power. The formula for each channel can be given as:

$$V_i = U_i + U_i^2 \cdot \frac{cf}{dcp_i}$$

with	V_i	= Compensated signal of channel i	(i = x, y, z)
	U_i	= Input signal of channel i	(i = x, y, z)
	cf	= Crest factor of exciting field	(DASY parameter)
	dcp_i	= Diode compression point	(DASY parameter)

From the compensated input signals the primary field data for each channel can be evaluated:

$$\text{E-field probes: } E_i = \sqrt{\frac{V_i}{Norm_i \cdot ConvF}}$$

$$\text{H-field probes: } H_i = \sqrt{V_i} \cdot \frac{a_{i10} + a_{i11}f + a_{i12}f^2}{f}$$

with	V_i	= Compensated signal of channel i	(i = x, y, z)
	$Norm_i$	= Sensor sensitivity of channel i	(i = x, y, z)
		$\mu\text{V}/(\text{V/m})^2$ for E0field Probes	
	$ConvF$	= Sensitivity enhancement in solution	
	a_{ij}	= Sensor sensitivity factors for H-field probes	
	f	= Carrier frequency (GHz)	
	E_i	= Electric field strength of channel i in V/m	
	H_i	= Magnetic field strength of channel i in A/m	

The RSS value of the field components gives the total field strength (Hermitian magnitude):

$$E_{tot} = \sqrt{E_x^2 + E_y^2 + E_z^2}$$

The primary field data are used to calculate the derived field units.



$$SAR = E_{tot}^2 \cdot \frac{\sigma}{\rho \cdot 1000}$$

- with SAR = local specific absorption rate in mW/g
 E_{tot} = total field strength in V/m
 σ = conductivity in [mho/m] or [Siemens/m]
 ρ = equivalent tissue density in g/cm³

Note that the density is normally set to 1 (or 1.06), to account for actual brain density rather than the density of the simulation liquid.

The power flow density is calculated assuming the excitation field as a free space field.

$$P_{pwe} = \frac{E_{tot}^2}{3770} \quad \text{or} \quad P_{pwe} = H_{tot}^2 \cdot 37.7$$

- with P_{pwe} = Equivalent power density of a plane wave in mW/cm²
 E_{tot} = total electric field strength in V/m
 H_{tot} = total magnetic field strength in A/m



SAR EVALUATION PROCEDURES

The procedure for assessing the peak spatial-average SAR value consists of the following steps:

- **Power Reference Measurement**

The reference and drift jobs are useful jobs for monitoring the power drift of the device under test in the batch process. Both jobs measure the field at a specified reference position, at a selectable distance from the phantom surface. The reference position can be either the selected section's grid reference point or a user point in this section. The reference job projects the selected point onto the phantom surface, orients the probe perpendicularly to the surface, and approaches the surface using the selected detection method.

- **Area Scan**

The area scan is used as a fast scan in two dimensions to find the area of high field values, before doing a finer measurement around the hot spot. The sophisticated interpolation routines implemented in DASY4 software can find the maximum locations even in relatively coarse grids. The scan area is defined by an editable grid. This grid is anchored at the grid reference point of the selected section in the phantom. When the area scan's property sheet is brought-up, grid was at to 15 mm by 15 mm and can be edited by a user.

- **Zoom Scan**

Zoom scans are used to assess the peak spatial SAR values within a cubic averaging volume containing 1 g and 10 g of simulated tissue. The default zoom scan measures 7 x 7 x 9 points within a cube whose base faces are centered around the maximum found in a preceding area scan job within the same procedure. If the preceding Area Scan job indicates more than one maximum, the number of Zoom Scans has to be enlarged accordingly (The default number inserted is 1).

- **Power Drift measurement**

The drift job measures the field at the same location as the most recent reference job within the same procedure, and with the same settings. The drift measurement gives the field difference in dB from the reading conducted within the last reference measurement. Several drift measurements are possible for one reference measurement. This allows a user to monitor the power drift of the device under test within a batch process. In the properties of the Drift job, the user can specify a limit for the drift and have DASY4 software stop the measurements if this limit is exceeded.



SPATIAL PEAK SAR EVALUATION

The procedure for spatial peak SAR evaluation has been implemented according to the IEEE1529 standard. It can be conducted for 1 g and 10 g.

The DASY4 system allows evaluations that combine measured data and robot positions, such as:

- maximum search
- extrapolation
- boundary correction
- peak search for averaged SAR

During a maximum search, global and local maximum searches are automatically performed in 2-D after each Area Scan measurement with at least 6 measurement points. It is based on the evaluation of the local SAR gradient calculated by the Quadratic Shepard's method. The algorithm will find the global maximum and all local maxima within -2 dB of the global maxima for all SAR distributions.

Extrapolation

Extrapolation routines are used to obtain SAR values between the lowest measurement points and the inner phantom surface. The extrapolation distance is determined by the surface detection distance and the probe sensor offset. Several measurements at different distances are necessary for the extrapolation.

Extrapolation routines require at least 10 measurement points in 3-D space. They are used in the Cube Scan to obtain SAR values between the lowest measurement points and the inner phantom surface. The routine uses the modified Quadratic Shepard's method for extrapolation. For a grid using 7x7x9 measurement points with 5mm resolution amounting to 441 measurement points, the uncertainty of the extrapolation routines is less than 1% for 1 g and 10 g cubes.

Boundary effect

For measurements in the immediate vicinity of a phantom surface, the field coupling effects between the probe and the boundary influence the probe characteristics. Boundary effect errors of different dosimetric probe types have been analyzed by measurements and using a numerical probe model. As expected, both methods showed an enhanced sensitivity in the immediate vicinity of the boundary. The effect strongly depends on the probe dimensions and disappears with increasing distance from the boundary. The sensitivity can be approximately given as:

$$S \approx S_o + S_b \exp\left(-\frac{z}{a}\right) \cos\left(\pi \frac{z}{\lambda}\right)$$

Since the decay of the boundary effect dominates for small probes ($a \ll \lambda$), the cos-term can be omitted. Factors S_b (parameter Alpha in the DASY4 software) and a (parameter Delta in the DASY4 software) are assessed during probe calibration and used for numerical compensation of the boundary effect. Several simulations and measurements have confirmed that the compensation is valid for different field and boundary configurations.

This simple compensation procedure can largely reduce the probe uncertainty near boundaries. It works well as long as:

- the boundary curvature is small
- the probe axis is angled less than 30° to the boundary normal
- the distance between probe and boundary is larger than 25% of the probe diameter
- the probe is symmetric (all sensors have the same offset from the probe tip)

Since all of these requirements are fulfilled in a DASY4 system, the correction of the probe boundary effect in the vicinity of the phantom surface is performed in a fully automated manner via the measurement data extraction during postprocessing.



6. MEASUREMENT UNCERTAINTY

DASY4:

UNCERTAINTY BUDGE ACCORDING TO IEEE P1528						
Error Description	Uncertainty Value $\pm\%$	Probability distribution	Divisor	C_1 1g	Standard unc.(1g/10g) $\pm\%$	V_1 or V_{eff}
Measurement System						
Probe calibration	± 4.8	normal	1	1	± 4.8	∞
Axial isotropy of probe	± 4.6	rectangular	$\sqrt{3}$	$(1-C_p)^{1/2}$	± 1.9	∞
Sph. Isotropy of probe	± 9.7	rectangular	$\sqrt{3}$	$(C_p)^{1/2}$	± 3.9	∞
Probe linearity	± 4.5	rectangular	$\sqrt{3}$	1	± 2.7	∞
Detection Limit	± 0.9	rectangular	$\sqrt{3}$	1	± 0.6	∞
Boundary effects	± 8.5	rectangular	$\sqrt{3}$	1	± 4.8	∞
Readoutelectronics	± 1.0	normal	1	1	± 1.0	∞
Response time	± 0.9	rectangular	$\sqrt{3}$	1	± 0.5	∞
Integration time	± 1.2	rectangular	$\sqrt{3}$	1	± 0.8	∞
Mech Constrains of robot	± 0.5	rectangular	$\sqrt{3}$	1	± 0.2	∞
Probe positioning	± 2.7	rectangular	$\sqrt{3}$	1	± 1.7	∞
Extrap. And integration	± 4.0	rectangular	$\sqrt{3}$	1	± 2.3	∞
RF ambient conditiona	± 0.54	rectangular	$\sqrt{3}$	1	± 0.43	∞
Test Sample Related						
Device positioning	± 2.2	normal	1	1	± 2.23	11
Device holder uncertainty	± 5	normal	1	1	± 5.0	7
Power drift	± 5	rectangular	$\sqrt{3}$	1	± 2.9	∞
Phantom and Set up						
Phantom uncertainty	± 4	rectangular	$\sqrt{3}$	1	± 2.3	∞
Liquid conductivity	± 5	rectangular	$\sqrt{3}$	0.6	± 1.7	∞
Liquid conductivity	± 5	rectangular	$\sqrt{3}$	0.6	$\pm 3.5/1.7$	∞
Liquid permittivity	± 5	rectangular	$\sqrt{3}$	0.6	± 1.7	∞
Liquid permittivity	± 5	rectangular	$\sqrt{3}$	0.6	± 1.7	∞
Combined Standard Uncertainty						
					$\pm 12.14/11.76$	
Coverage Factor for 95%						
		$k_p=2$				
Expanded Standard Uncertainty						
					$\pm 24.29/23.51$	

Table: Worst-case uncertainty for DASY4 assessed according to IEEE P1528.

The budge is valid for the frequency range 300 MHz to 6G Hz and represents a worst-case analysis.



Dasy5:

UNCERTAINTY BUDGE ACCORDING TO IEEE P1528						
Error Description	Uncertainty Value ±%	Probability distribution	Divisor	C ₁ 1g	Standard unc.(1g/10g) ±%	V ₁ or V _{eff}
Measurement System						
Probe calibration	±5.9	normal	1	1	±5.9	∞
Axial isotropy of probe	±4.7	rectangular	√3	(1-Cp) ^{1/2}	±1.9	∞
Sph. Isotropy of probe	±9.6	rectangular	√3	(Cp) ^{1/2}	±3.9	∞
Probe linearity	±4.7	rectangular	√3	1	±2.7	∞
Detection Limit	±1.0	rectangular	√3	1	±0.6	∞
Boundary effects	±1.0	rectangular	√3	1	±0.6	∞
Readoutelectronics	±0.3	normal	1	1	±0.3	∞
Response time	±0.8	rectangular	√3	1	±0.5	∞
Integration time	±2.6	rectangular	√3	1	±1.5	∞
Probe positioning	±0.4	rectangular	√3	1	±0.2	∞
Extrap. And integration	±4.0	rectangular	√3	1	±2.3	∞
RF ambient conditiona	±3.0	rectangular	√3	1	±1.7	∞
RF ambient conditiona	±3.0	rectangular	√3	1	±1.7	∞
Test Sample Related						
Device positioning	±2.9	normal	1	1	±2.9	145
Device holder uncertainty	±3.6	normal	1	1	±3.6	5
Power drift	±5.0	rectangular	√3	1	±2.9	∞
Phantom and Set up						
Phantom uncertainty	±4.0	rectangular	√3	1	±2.3	∞
Liquid conductivity	±5.0	rectangular	√3	0.6	±1.8/1.2	∞
Liquid conductivity	±1.5	rectangular	√3	0.6	±0.6	∞
Liquid permittivity	±5.0	rectangular	√3	0.6	±1.7/1.4	∞
Liquid permittivity	±1.0	rectangular	√3	0.6	±0.4	∞
Combined Standard Uncertainty						
					±10.375/±10.112	
Coverage Factor for 95%						
		kp=2				
Expanded Standard Uncertainty						
					±20.75/±19.23	

Table: Worst-case uncertainty for DASY5 assessed according to IEEE P1528.

The budge is valid for the frequency range 300 MHz to 6G Hz and represents a worst-case analysis.



7. EXPOSURE LIMIT

(A).Limits for Occupational/Controlled Exposure (W/kg)

<u>Whole-Body</u>	<u>Partial-Body</u>	<u>Hands, Wrists, Feet and Ankles</u>
0.4	8.0	2.0

(B).Limits for General Population/Uncontrolled Exposure (W/kg)

<u>Whole-Body</u>	<u>Partial-Body</u>	<u>Hands, Wrists, Feet and Ankles</u>
0.08	1.6	4.0

NOTE: **Whole-Body SAR** is averaged over the entire body, **partial-body SAR** is averaged over any 1 gram of tissue defined as a tissue volume in the shape of a cube. **SAR for hands, wrists, feet and ankles** is averaged over any 10 grams of tissue defined as a tissue volume in the shape of a cube.

Population/Uncontrolled Environments:

are defined as locations where there is the exposure of individuals who have no knowledge or control of their exposure.

Occupational/Controlled Environments:

are defined as locations where there is exposure that may be incurred by people who are aware of the potential for exposure, (i.e. as a result of employment or occupation).

<p style="text-align: center;">NOTE GENERAL POPULATION/UNCONTROLLED EXPOSURE PARTIAL BODY LIMIT 1.6 W/kg</p>
--

8. EUT ARRANGEMENT

Please refer to IEEE P1528 illustration below.

8.1 ANTHROPOMORPHIC HEAD PHANTOM

Figure 7-1a shows the front, back and side views of SAM. The point “M” is the reference point for the center of mouth, “LE” is the left ear reference point (ERP), and “RE” is the right ERP. The ERPs are 15 mm posterior to the entrance to ear canal (EEC) along the B-M line (Back-Mouth), as shown in Figure 7-1b. The plane passing through the two ear reference points and M is defined as the Reference Plane. The line N-F (Neck-Front) perpendicular to the reference plane and passing through the RE (or LE) is called the Reference Pivoting Line (see Figure 7-1c). Line B-M is perpendicular to the N-F line. Both N-F and B-M lines should be marked on the external phantom shell to facilitate handset positioning. Posterior to the N-F line, the thickness of the phantom shell with the shape of an ear is a flat surface 6 mm thick at the ERPs. Anterior to the N-F line, the ear is truncated as illustrated in Figure 7-1b. The ear truncation is introduced to avoid the handset from touching the ear lobe, which can cause unstable handset positioning at the cheek.

Figure 7-1a

Front, back and side view of SAM (model for the phantom shell)

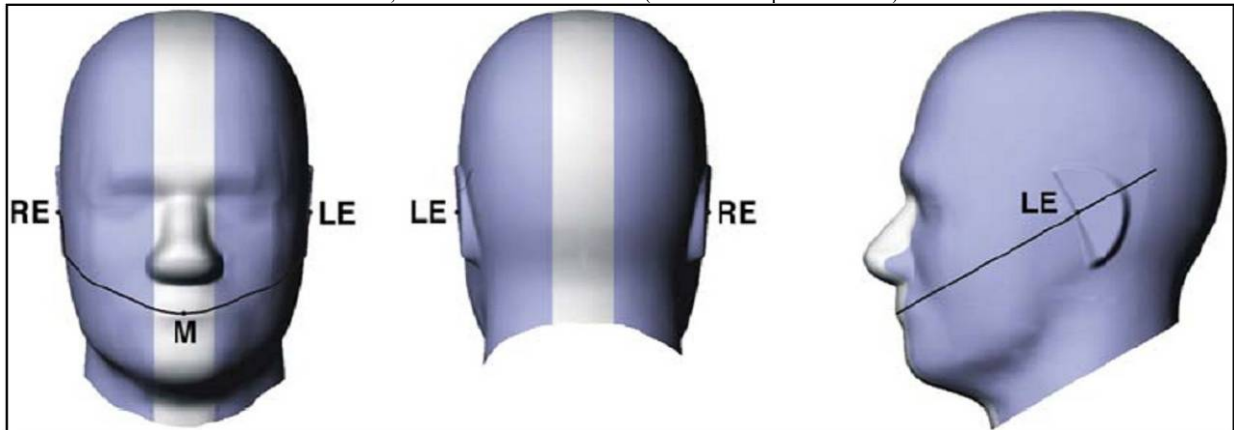


Figure 7-1b

Close up side view of phantom showing the ear region

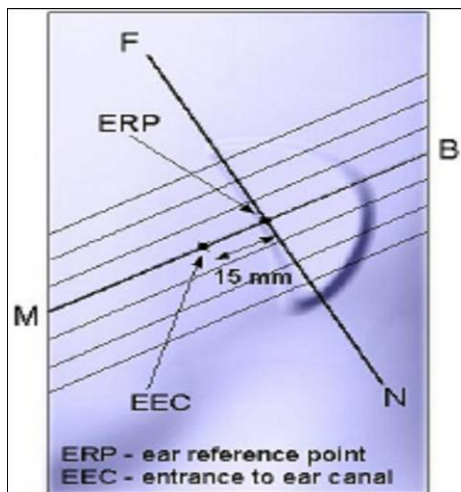


Figure 7-1b

Close up side view of phantom showing the ear region

Figure 7-1c

Side view of the phantom showing relevant markings and the 7 cross sectional plane locations

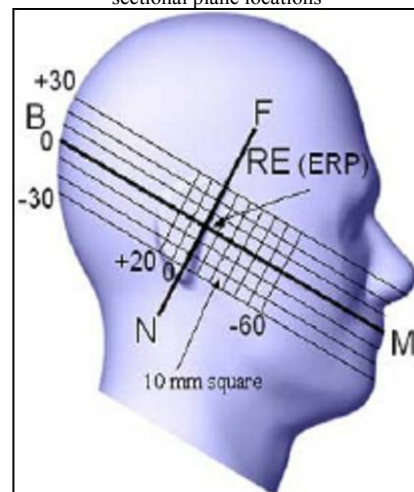


Figure 7-1c

Side view of the phantom showing relevant markings and the 7 cross sectional plane locations

8.2 DEFINITION OF THE “CHEEK/TOUCH” POSITION

The “cheek” or “touch” position is defined as follows:

- a. Ready the handset for talk operation, if necessary. For example, for handsets with a cover piece, open the cover. (If the handset can also be used with the cover closed both configurations must be tested.)
- b. Define two imaginary lines on the handset: the vertical centerline and the horizontal line. The vertical centerline passes through two points on the front side of the handset: the midpoint of the width w_t of the handset at the level of the acoustic output (point A on Figures 7-2a and 7-2b), and the midpoint of the width w_b of the bottom of the handset (point B). The horizontal line is perpendicular to the vertical centerline and passes through the center of the acoustic output (see Figure 7-2a). The two lines intersect at point A. Note that for many handsets, point A coincides with the center of the acoustic output. However, the acoustic output may be located elsewhere on the horizontal line. Also note that the vertical centerline is not necessarily parallel to the front face of the handset (see Figure 7-2b), especially for clamshell handsets, handsets with flip pieces, and other irregularly-shaped handsets.
- c. Position the handset close to the surface of the phantom such that point A is on the (virtual) extension of the line passing through points RE and LE on the phantom (see Figure 7-2c), such that the plane defined by the vertical center line and the horizontal line of the handset is approximately parallel to the sagittal plane of the phantom.
- d. Translate the handset towards the phantom along the line passing through RE and LE until the handset touches the pinna.
- e. e) While maintaining the handset in this plane, rotate it around the LE-RE line until the vertical centerline is in the plane normal to MB-NF including the line MB (called the reference plane).
- f. Rotate the handset around the vertical centerline until the handset (horizontal line) is symmetrical with respect to the line NF.
- g. While maintaining the vertical centerline in the reference plane, keeping point A on the line passing through RE and LE and maintaining the handset contact with the pinna, rotate the handset about the line NF until any point on the handset is in contact with a phantom point below the pinna (cheek). See Figure 7-2c. The physical angles of rotation should be noted.

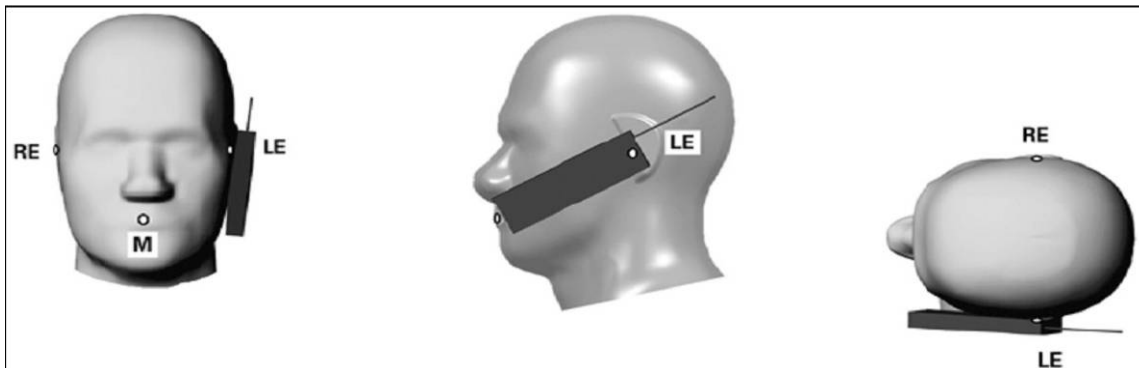


Figure 7.2c

Phone “cheek” or “touch” position. The reference points for the right ear (RE), left ear (LE) and mouth (M), which define the reference plane for handset positioning, are indicated.

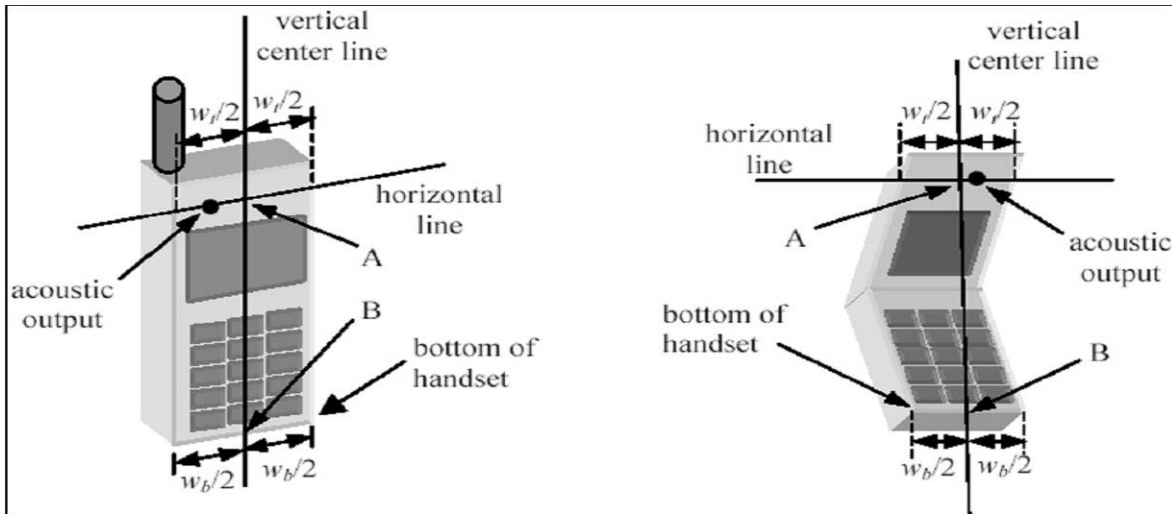


Figure 7.2a

Figure 7.2b

8.3 DEFINITION OF THE “TILTED” POSITION

The “tilted” position is defined as follows:

- Repeat steps (a) – (g) of 7.2 to place the device in the “cheek position.”
- While maintaining the orientation of the handset move the handset away from the pinna along the line passing through RE and LE in order to enable a rotation of the handset by 15 degrees.
- Rotate the handset around the horizontal line by 15 degrees.
- While maintaining the orientation of the handset, move the handset towards the phantom on a line passing through RE and LE until any part of the handset touches the ear. The tilted position is obtained when the contact is on the pinna. If the contact is at any location other than the pinna (e.g., the antenna with the back of the phantom head), the angle of the handset should be reduced. In this case, the tilted position is obtained if any part of the handset is in contact with the pinna as well as a second part of the handset is contact with the phantom (e.g., the antenna with the back of the head).

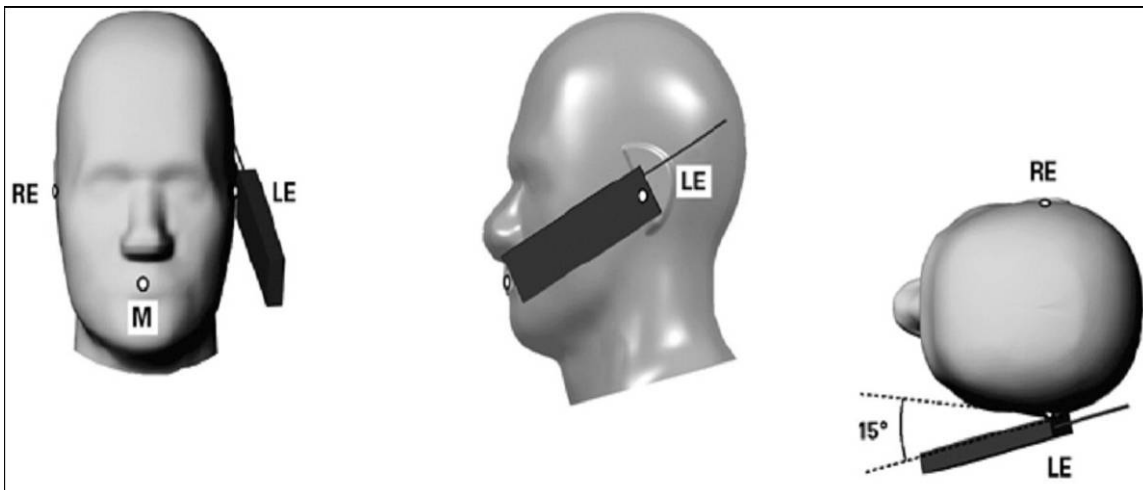


Figure 7-3

Phone “tilted” position. The reference points for the right ear (RE), left ear (LE) and mouth (M), which define the reference plane for handset positioning, are indicated.



9. MEASUREMENT RESULTS

9.1 TEST LIQUIDS CONFIRMATION

SIMULATING LIQUIDS PARAMETER CHECK

The simulating liquids should be checked at the beginning of a series of SAR measurements to determine if the dielectric parameters are within the tolerances of the specified target values

The relative permittivity and conductivity of the tissue material should be within $\pm 5\%$ of the values given in the table below. 5% may not be easily achieved at certain frequencies. Under such circumstances, 10% tolerance may be used until more precise tissue recipes are available

IEEE SCC-34/SC-2 P1528 RECOMMENDED TISSUE DIELECTRIC PARAMETERS

The head tissue dielectric parameters recommended by the IEEE SCC-34/SC-2 in P1528 have been incorporated in the following table. These head parameters are derived from planar layer models simulating the highest expected SAR for the dielectric properties and tissue thickness variations in a human head. Other head and body tissue parameters that have not been specified in P1528 are derived from the tissue dielectric parameters computed from the 4-Cole-Cole equations and extrapolated according to the head parameters specified in P1528

Target Frequency (MHz)	Head		Body	
	ϵ_r	σ (S/m)	ϵ_r	σ (S/m)
150	52.3	0.76	61.9	0.80
300	45.3	0.87	58.2	0.92
450	43.5	0.87	56.7	0.94
835	41.5	0.90	55.2	0.97
900	41.5	0.97	55.0	1.05
915	41.5	0.98	55.0	1.06
1450	40.5	1.20	54.0	1.30
1610	40.3	1.29	53.8	1.40
1800-2000	40.0	1.40	53.3	1.52
2450	39.2	1.80	52.7	1.95
3000	38.5	2.40	52.0	2.73
5800	35.3	5.27	48.2	6.00

(ϵ_r = relative permittivity, σ = conductivity and $\rho = 1000 \text{ kg/m}^3$)



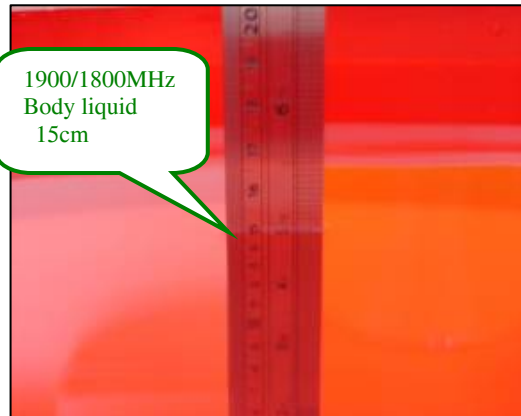
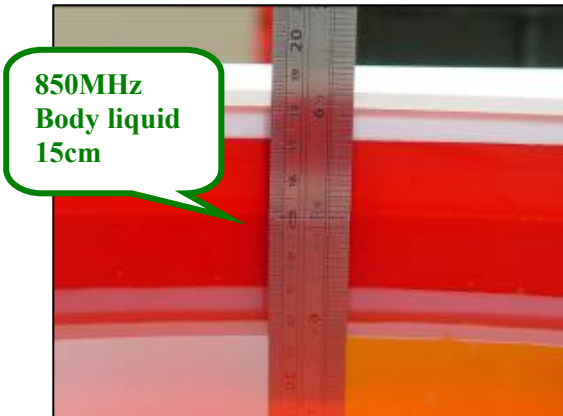
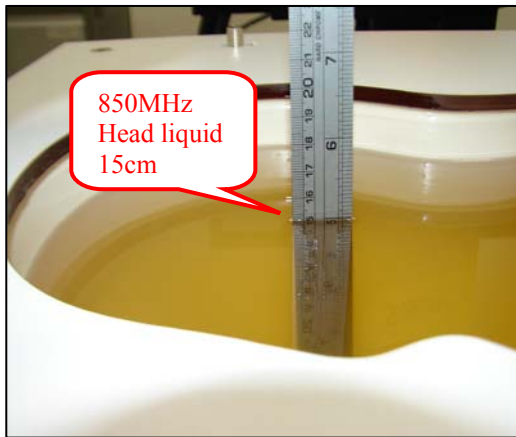
LIQUID MEASUREMENT RESULTS

Date: January 02,2012 **Ambient condition:** Temperature 24.2C; Relative humidity: 52%

Head Simulatinf Liquid			Parameters	Target	Measured	Deviation[%]	Limited[%]
Frequency	Temp. [°C]	Depth [cm]					
835 MHz	23.20	15.00	Permitivity:	41.50	42.10	1.45	±5
			Conductivity:	0.90	0.922	2.44	± 5

Date: January 03, 2012 **Ambient condition:** Temperature 24.2C; Relative humidity: 52%

Body Simulatinf Liquid			Parameters	Target	Measured	Deviation[%]	Limited[%]
Frequency	Temp. [°C]	Depth [cm]					
835 MHz	23.20	15.00	Permitivity:	55.20	54.00	-2.17	±5
			Conductivity:	0.97	0.942	-2.89	± 5





Date: January 04, 2012 **Ambient condition:** Temperature 24.6°C; Relative humidity: 52%

Body Simulating Liquid			Parameters	Target	Measured	Deviation[%]	Limited[%]
Frequency	Temp. [°C]	Depth (cm)					
1800 MHz	23.20	15.00	Permittivity:	40.00	40.60	1.50	± 5
			Conductivity:	1.40	1.38	-1.43	± 5

Date: January 05,2012 **Ambient condition:** Temperature 24.2C; Relative humidity: 52%

Body Simulating Liquid			Parameters	Target	Measured	Deviation[%]	Limited[%]
Frequency	Temp. [°C]	Depth (cm)					
1800 MHz	23.20	15.00	Permittivity:	53.30	51.90	-2.63	± 5
			Conductivity:	1.52	1.48	-2.63	± 5

Date: January 04, 2012 **Ambient condition:** Temperature 24.6°C; Relative humidity: 52%

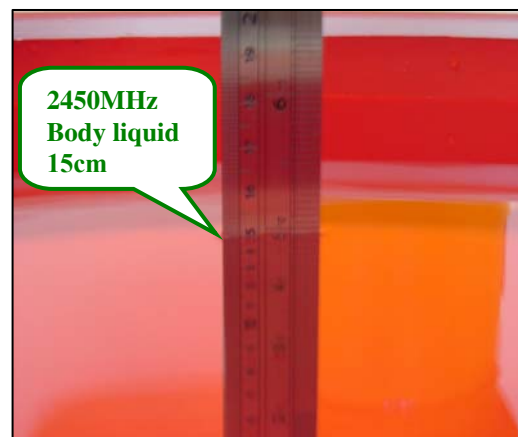
Head Simulating Liquid			Parameters	Target	Measured	Deviation[%]	Limited[%]
Frequency	Temp. [°C]	Depth (cm)					
1900 MHz	23.20	15.00	Permittivity:	40.00	40.20	0.50	± 5
			Conductivity:	1.40	1.42	1.43	± 5

Date: January 05,2012 **Ambient condition:** Temperature 24.2C; Relative humidity: 52%

Body Simulating Liquid			Parameters	Target	Measured	Deviation[%]	Limited[%]
Frequency	Temp. [°C]	Depth (cm)					
1900 MHz	23.20	15.00	Permittivity:	53.30	51.70	-3.00	± 5
			Conductivity:	1.52	1.51	-0.66	± 5

Date: January 05, 2012 **Ambient condition:** Temperature 24.2°C; Relative humidity: 52%

Head Simulating Liquid			Parameters	Target	Measured	Deviation[%]	Limited[%]
f (MHz)	Temp. [°C]	Depth (cm)					
2450.00	23.20	15.00	Permittivity:	52.70	50.70	-3.80	± 5
			Conductivity:	1.95	1.92	-1.54	± 5





9.2 SYSTEM PERFORMANCE CHECK

The system performance check is performed prior to any usage of the system in order to guarantee reproducible results. The system performance check verifies that the system operates within its specifications of $\pm 10\%$. The system performance check results are tabulated below. And also the corresponding SAR plot is attached as well in the SAR plots files.

IEEE P1528 Recommended Reference Value

Frequency (MHz)	1 g SAR	10 g SAR	Local SAR at surface (Above feed point)	Local SAR at surface (y=2cm offset from feed point)
300	3.0	2.0	4.4	2.1
450	4.9	3.3	7.2	3.2
835	9.5	6.2	14.1	4.9
900	10.8	6.9	16.4	5.4
1450	29.0	16.0	50.2	6.5
1800	38.1	19.8	69.5	6.8
1900	38.8	20.4	67.6	6.6
2000	41.1	21.1	74.6	6.5
2450	52.4	24.0	104.2	7.7
3000	63.8	25.7	140.2	9.5

SYSTEM PERFORMANCE CHECK MEASUREMENT CONDITIONS

- The measurements were performed in the flat section of the SAM twin phantom filled with Head and Body simulating liquid of the following parameters.
- The DASY5 system with an E-field probe EX3DV4 SN: 3554 was used for the measurements.
- The dipole was mounted on the small tripod so that the dipole feed point was positioned below the center marking of the flat phantom section and the dipole was oriented parallel to the body axis (the long side of the phantom). The standard measuring distance was 15 mm (below 1 GHz) and 10 mm (above 1 GHz) from dipole center to the simulating liquid surface.
- The dipole input power (forward power) was 250 mW.
- The 1g and 10 g spatial average SAR values normalized to 1 W dipole input power give reference data for comparisons and it's equal to 4x(dipole forward power).

**SYSTEM PERFORMANCE CHECK RESULTS****Dipole:** D835V2-SN: 4d015**Date:** January 02, 2012 **Ambient condition:** Temperature 24.6°C; Relative humidity: 52%

Head Simulatinf Liquid			Parameters	Target	Measured	Deviation[%]	Limited[%]
Frequency	Temp. [°C]	Depth [cm]					
835.00	23.20	15.00	Permittivity:	41.50	54.10	30.36	±5
			Conductivity:	0.90	0.941	4.56	±5
			1g SAR:	9.69	9.96	2.79	±5

ps. 1g SAR is equal 4x2.49(250mW forward power SAR value)

Dipole: D835V2-SN: 4d015**Date:** January 02, 2012 **Ambient condition:** Temperature 24.6°C; Relative humidity: 52%

Body Simulatinf Liquid			Parameters	Target	Measured	Deviation[%]	Limited[%]
Frequency	Temp. [°C]	Depth [cm]					
835.00	23.60	15.00	Permittivity:	55.20	54.10	-1.99	±5
			Conductivity:	0.97	0.941	-2.99	±5
			1g SAR:	10.10	10.32	2.18	±5

ps. 1g SAR is equal 4x2.58(250mW forward power SAR value)

Dipole: D1900V2 SN: 5d056**Date:** January 03, 2012 **Ambient condition:** Temperature 24.6°C; Relative humidity: 52%

Head Simulatinf Liquid			Parameters	Target	Measured	Deviation[%]	Limited[%]
Frequency	Temp. [°C]	Depth [cm]					
1900.00	23.20	15.00	Permittivity:	40.00	40.20	0.50	±5
			Conductivity:	1.40	1.42	1.43	±5
			1g SAR:	39.80	40.40	1.51	±5

ps. 1g SAR is equal 4x10.1(250mW forward power SAR value)

Dipole: D1900V2 SN: 5d056**Date:** January 04, 2012 **Ambient condition:** Temperature 24.6°C; Relative humidity: 52%

Body Simulatinf Liquid			Parameters	Target	Measured	Deviation[%]	Limited[%]
Frequency	Temp. [°C]	Depth [cm]					
1900.00	23.60	15.00	Permittivity:	53.30	51.70	-3.00	±5
			Conductivity:	1.52	1.51	-0.66	±5
			1g SAR:	40.50	41.20	1.73	±5

ps. 1g SAR is equal 4x10.3(250mW forward power SAR value)

Dipole: D2450V2 SN: 728**Date:** January 05, 2012 **Ambient condition:** Temperature 24.2°C; Relative humidity: 52%

Body Simulating Liquid			Parameters	Target	Measured	Deviation[%]	Limited[%]
f(MHz)	Temp. [°C]	Depth [cm]					
2450.00	23.20	15.00	Permittivity:	52.70	50.70	-3.80	±5
			Conductivity:	1.95	1.92	-1.54	±5
			1g SAR:	51.20	52.00	1.56	±5

ps. 1g SAR is equal 4x13(250mW forward power SAR value)



9.3 EUT TUNE-UP PROCEDURES

The following procedures had been used to prepare the EUT for the SAR test.

- To setup the desire channel frequency and the maximum output power. A Radio Communication Tester “Agilent E5515c 8960 ” was used to program the EUT.
- If the SAR measured on the highest output channel is < 50% of the SAR limit, SAR evaluation for the other required channels is unnecessary.

GSM 850 / GPRS 850

Network Support: *GSM / GPRS*

Main Service: *Circuit Switched / Package Switched*

Power Setting: *33dBm / 33dBm class 10 (2Up3Dn)*

GPRS support class B

GSM 1900 / GPRS 1900

Network Support: *GSM only / GPRS*

Main Service: *Circuit Switched / Package Switched*

Power Setting: *30dBm / 30dBm class 10(2Up3Dn)*

GPRS support class B

Conducted output power (Average)(dBm)

GSM		GSM mode		GPRS mode		EDGE mode	
		Before SAR test	Before SAR test	Before SAR test	After SAR test	Before SAR test	After SAR test
GSM 850	Ch 128	32.71	unnecessary	23.89	unnecessary	20.89	20.82
	Ch 190	32.82	32.74	24.10	24.04	20.78	unnecessary
	Ch 251	32.72	unnecessary	23.98	unnecessary	20.58	unnecessary
GSM		GSM mode		GPRS mode		EDGE mode	
		Before SAR test	Before SAR test	Before SAR test	After SAR test	Before SAR test	After SAR test
GSM 1900	Ch 512	28.80	28.72	20.10	20.04	18.79	18.72
	Ch 661	28.42	unnecessary	19.58	unnecessary	18.68	unnecessary
	Ch 810	28.40	unnecessary	19.58	unnecessary	18.38	unnecessary

802.11b/g Conducted output power (Average)(dBm)

WiFi	802.11b 1M		802.11g 6M	
	Before SAR test	After SAR test	Before SAR test	After SAR test
2412	15.10	unnecessary	12.05	unnecessary
2442	15.22	unnecessary	12.28	unnecessary
2462	15.46	15.36	12.05	unnecessary

Ps. (1) 802.11b maximum output power 15.46dBm(35.156mW) is higher than 24.37mW((60/f)mW),
So 802.11b stand-alone SAR test is Required

(2) KDB 248227 - SAR is not required for 802.11g channels when the maximum average output power is less than 1/4 dB higher than that measured on the corresponding 802.11b channels.



Bluetooth Conducted output power (Average)(dBm)

Bluetooth	GFSK		8DPSK	
	Before SAR test	After SAR test	Before SAR test	After SAR test
2402	-3.84	<i>SAR test is not Required</i>	-9.27	<i>SAR test is not Required</i>
2441	-4.11		-8.92	
2480	-4.93		-9.29	

Ps. Bluetooth maximum output power -3.84dBm(0.413mW) is less than 24.58mW((60/f)mW), So Bluetooth stand-alone SAR test is not Required

9.4 RF POWER OUTPUT FOR UMTS REL99

The following tests were completed according to the test requirements outlined in section 5.2 of the 3GPP TS34.121-1 V8.7.0 specification. The EUT supports power Class 3, which has a nominal maximum output power of 24 dBm (+1.7/-3.7) 12.2kps RMC is used for this testing. Power control set to All bits up. A summary of these settings are illustrated below:

	Mode	Rel99
	Subtest	-
WCDMA General Settings	Loopback Mode	Test Mode 1
	Rel99 RMC	12.2kbps RMC
	HSDPA FRC	Not Applicable
	HSUPA Test	Not Applicable
	Power Control Algorithm	Algorithm2
	β_c	Not Applicable
	β_d	Not Applicable
	β_{ec}	Not Applicable
	β_c/β_d	8/15
	β_{hs}	Not Applicable
	β_{ed}	Not Applicable

Band	UL Ch	DL Ch	Frequency	Conducted output power (dBm)
				Average
UMTS1900 (Band II)	9262	9662	1852.4	23.33
	9400	9800	1880	23.18
	9538	9938	1907.6	23.63
UMTS850 (Band V)	4132	4357	826.4	23.71
	4182	4407	836.4	23.66
	4233	4458	846.6	23.50
UMTS1800 (Band IV)	1312	1537	1712.4	24.16
	1412	1637	1732.4	24.25
	1513	1738	1752.6	24.34



9.5 RF POWER OUTPUT FOR UMTS REL 6 HSDPA

The following Sub-Tests were completed according to the test requirements outlined in section 5.2A of the 3GPP TS34.121-1 V8.7.0 specification. All TX RMS and Peak power requirements for Power Class 3 were met according to table 5.2AA.5 and achieved through the outlined test procedure in section 5.2AA.4.2. A summary of these settings are illustrated below:

Mode	Rel6 HSDPA	Rel6 HSDPA	Rel6 HSDPA	Rel6 HSDPA	
Subtest	1	2	3	4	
WCDMA General Settings	Loopback Mode				
	Test Mode 1				
	Rel99 RMC				
	12.2kbps RMC				
	HSDPA FRC				
	H-Set1				
	HSUPA Test				
	Not Applicable				
	Power Control Algorithm				
	Algorithm 2				
HSDPA Specific Settings	β_c	2/15	12/15	15/15	15/15
	β_d	15/15	15/15	8/15	4/15
	β_{ec}	-	-	-	-
	β_c/β_d	2/15	12/15	15/8	15/4
	β_{hs}	4/15	24/15	30/15	30/15
	β_{ed}	Not Applicable			
	DACK	8			
	DNAK	8			
DCQI	8				
Ack-Nack repetition factor	3				
CQI Feedback (Table 5.2B.4)	4ms				
CQI Repetition Factor (Table 5.2B.4)	2				
Ahs = β_{hs}/β_c	30/15				

Result

Band	Subtest	UL Ch	DL Ch	Frequency	Conducted output power (dBm)
					Average
UMTS1900 (Band II)	1	9262	9662	1852.4	23.46
		9400	9800	1880.0	23.48
		9538	9938	1907.6	23.56
	2	9262	9662	1852.4	23.38
		9400	9800	1880.0	23.40
		9538	9938	1907.6	23.52
	3	9262	9662	1852.4	23.05
		9400	9800	1880.0	23.10
		9538	9938	1907.6	23.12
	4	9262	9662	1852.4	22.98
		9400	9800	1880.0	23.03
		9538	9938	1907.6	23.06
UMTS850 (Band V)	1	4132	4357	826.4	23.24
		4182	4407	836.4	23.26
		4233	4458	846.6	23.32
	2	4132	4357	826.4	23.12
		4182	4407	836.4	23.16
		4233	4458	846.6	23.25
	3	4132	4357	826.4	22.82
		4182	4407	836.4	22.88
		4233	4458	846.6	22.90
	4	4132	4357	826.4	22.72
		4182	4407	836.4	22.78
		4233	4458	846.6	22.85



Band	Subtest	UL Ch	DL Ch	Frequency	Conducted output power (dBm)
					Average
UMTS1800 (Band IV)	1	1312	1537	1712.4	23.73
		1412	1637	1732.4	23.84
		1513	1738	1752.6	23.68
	2	1312	1537	1712.4	23.62
		1412	1637	1732.4	23.68
		1513	1738	1752.6	23.52
	3	1312	1537	1712.4	23.21
		1412	1637	1732.4	23.28
		1513	1738	1752.6	23.20
	4	1312	1537	1712.4	23.15
		1412	1637	1732.4	23.22
		1513	1738	1752.6	23.13



9.6 RF POWER OUTPUT UMTS REL 6 HSPA (HSDPA & HSUPA)

The following 5 Sub-Tests were completed according to the test requirements outlined in section 5.2B of the 3GPP TS34.121-1 V8.7.0 specification. All TX RMS and Peak power requirements were met according to table 5.2B.5 and achieved through the outlined test procedure in section 5.2B.4.2. A summary of these settings are illustrated below:

	Mode	Rel6 HSUPA	Rel6 HSUPA	Rel6 HSUPA	Rel6 HSUPA	Rel6 HSUPA
	Subtest	1	2	3	4	5
WCDMA General Settings	Loopback Mode	Test Mode 1				
	Rel99 RMC	12.2kbps RMC				
	HSDPA FRC	H-Set1				
	HSUPA Test	HSUPA Loopback				
	Power Control Algorithm	Algorithm2				
	β_c	11/15	6/15	15/15	2/15	15/15
	β_d	15/15	15/15	9/15	15/15	15/15
	β_{ec}	209/225	12/15	30/15	2/15	24/15
	β_c/β_d	11/15	6/15	15/9	2/15	15/15
	β_{hs}	22/15	12/15	30/15	4/15	30/15
β_{ed}	1309/225	94/75	47/15 47/15	56/75	134/15	
HSDPA Specific Settings	DACK	8				
	DNAK	8				
	DCQI	8				
	Ack-Nack repetition factor	3				
	CQI Feedback (Table 5.2B.4)	4ms				
	CQI Repetition Factor (Table 5.2B.4)	2				
	$A_{hs} = \beta_{hs}/\beta_c$	30/15				
HSUPA Specific Settings	D E-DPCCH	6	8	8	5	7
	DHARQ	0	0	0	0	0
	AG Index	20	12	15	17	21
	ETFCI (from 34.121 Table C.11.1.3)	75	67	92	71	81
	Associated Max UL Data Rate kbps	242.1	174.9	482.8	205.8	308.9
	Reference E_TFCIs	E-TFCI 11 E-TFCI PO 4 E-TFCI 67 E-TFCI PO 18 E-TFCI 71 E-TFCI PO 23 E-TFCI 75 E-TFCI PO 26 E-TFCI 81 E-TFCI PO 27		E-TFCI 11 E-TFCI PO 4 E-TFCI 92 E-TFCI PO 18	E-TFCI 11 E-TFCI PO 4 E-TFCI 75 E-TFCI PO 26 E-TFCI 81 E-TFCI PO 27	



REL 6 HSPA (HSDPA & HSUPA)

Band	Subtest	UL Ch	DL Ch	Frequency	Conducted output power (dBm)
					Average
UMTS1900 (Band II)	1	9262	9662	1852.4	23.14
		9400	9800	1880.0	22.84
		9538	9938	1907.6	23.03
	2	9262	9662	1852.4	21.10
		9400	9800	1880.0	20.92
		9538	9938	1907.6	21.11
	3	9262	9662	1852.4	22.26
		9400	9800	1880.0	20.95
		9538	9938	1907.6	21.11
	4	9262	9662	1852.4	21.03
		9400	9800	1880.0	20.78
		9538	9938	1907.6	21.02
	5	9262	9662	1852.4	23.08
		9400	9800	1880.0	22.78
		9538	9938	1907.6	22.98
UMTS850 (Band V)	1	4132	4357	826.4	23.15
		4182	4407	836.4	23.33
		4233	4458	846.6	23.40
	2	4132	4357	826.4	21.08
		4182	4407	836.4	21.23
		4233	4458	846.6	21.35
	3	4132	4357	826.4	22.21
		4182	4407	836.4	22.28
		4233	4458	846.6	22.33
	4	4132	4357	826.4	20.88
		4182	4407	836.4	21.11
		4233	4458	846.6	21.20
	5	4132	4357	826.4	23.05
		4182	4407	836.4	23.25
		4233	4458	846.6	23.30



REL 6 HSPA (HSDPA & HSUPA)

Band	Subtest	UL Ch	DL Ch	Frequency	Conducted output power (dBm)
					Average
UMTS1900 (Band IV)	1	1312	1537	1712.4	23.61
		1412	1637	1732.4	23.68
		1513	1738	1752.6	23.54
	2	1312	1537	1712.4	21.55
		1412	1637	1732.4	21.56
		1513	1738	1752.6	21.47
	3	1312	1537	1712.4	22.66
		1412	1637	1732.4	22.70
		1513	1738	1752.6	22.50
	4	1312	1537	1712.4	21.47
		1412	1637	1732.4	21.49
		1513	1738	1752.6	21.38
	5	1312	1537	1712.4	23.55
		1412	1637	1732.4	23.58
		1513	1738	1752.6	23.43



	<i>GSM 850 head</i>	<i>GSM 850 body</i>	<i>GPRS 850 body</i>	<i>EDGE 850 body</i>
<i>GSM 850 SAR(worst)</i>	0.431	0.440	0.287	0
<i>802.11b SAR(worst)</i>	0.079	0.279	0.279	0.279
<i>Σ1g-SAR</i>	<i>0.510</i>	<i>0.719</i>	<i>0.566</i>	<i>0.279</i>
<i>remark</i>	Less than 1.6W/kg(limit)	Less than 1.6W/kg(limit)	Less than 1.6W/kg(limit)	Less than 1.6W/kg(limit)

	<i>GSM 1900 head</i>	<i>GSM 1900 body</i>	<i>GPRS 1900 body</i>	<i>EDGE 1900 body</i>
<i>GSM 1900 SAR(worst)</i>	0.173	0.294	0.028	0
<i>802.11b SAR(worst)</i>	0.079	0.279	0.279	0.279
<i>Σ1g-SAR</i>	<i>0.252</i>	<i>0.573</i>	<i>0.307</i>	<i>0.279</i>
<i>remark</i>	Less than 1.6W/kg(limit)	Less than 1.6W/kg(limit)	Less than 1.6W/kg(limit)	Less than 1.6W/kg(limit)

<i>WCDMA band V</i>	<i>head</i>	<i>WCDMA body</i>	<i>HSDPA body</i>	<i>HSUPA body</i>
<i>SAR(worst)</i>	0.415	0.375	0	0
<i>802.11b SAR(worst)</i>	0.079	0.279	0.279	0.279
<i>Σ1g-SAR</i>	<i>0.494</i>	<i>0.554</i>	<i>0.279</i>	<i>0.279</i>
<i>remark</i>	Less than 1.6W/kg(limit)	Less than 1.6W/kg(limit)	Less than 1.6W/kg(limit)	Less than 1.6W/kg(limit)

<i>WCDMA band II</i>	<i>head</i>	<i>WCDMA body</i>	<i>HSDPA body</i>	<i>HSUPA body</i>
<i>SAR(worst)</i>	0.198	0.705	0	0
<i>802.11b SAR(worst)</i>	0.079	0.279	0.279	0.279
<i>Σ1g-SAR</i>	<i>0.277</i>	<i>0.984</i>	<i>0.279</i>	<i>0.279</i>
<i>remark</i>	Less than 1.6W/kg(limit)	Less than 1.6W/kg(limit)	Less than 1.6W/kg(limit)	Less than 1.6W/kg(limit)

<i>WCDMA band IV</i>	<i>head</i>	<i>WCDMA body</i>	<i>HSDPA body</i>	<i>HSUPA body</i>
<i>SAR(worst)</i>	0.091	0.722	0	0
<i>802.11b SAR(worst)</i>	0.079	0.279	0.279	0.279
<i>Σ1g-SAR</i>	<i>0.170</i>	<i>1.001</i>	<i>0.279</i>	<i>0.279</i>
<i>remark</i>	Less than 1.6W/kg(limit)	Less than 1.6W/kg(limit)	Less than 1.6W/kg(limit)	Less than 1.6W/kg(limit)

	<i>head</i>	<i>body</i>
<i>Bluetooth SAR(worst)</i>	0.000	0.000

**KDB 648474 simultaneous SAR evaluation:****Antenna Location:**





<i>antenna1</i>	<i>antenna2</i>	<i>distance(mm)</i>	<i>remark</i>
GSM	Bluetooth	20	
WCDMA	Bluetooth	20	
GSM	WLAN	20	
WCDMA	WLAN	20	

<i>device, mode, f</i>	<i>P, dBm</i>	<i>P, mW</i>	<i>stand-alone SAR(W/kg)</i>
T1, GSM/WCDMA, 850/1900	<i>Please refer to page 27~31</i>		Yes , <i>Please refer to page 35~39</i>
T2, WLAN, 802.11b	<i>15.46</i>	<i>35.156</i>	Yes , <i>Please refer to page 26</i>
T2, WLAN, 802.11g	<i>12.28</i>	<i>16.90</i>	No , <i>Please refer to page 26</i>
T2, Bluetooth, 2480	<i>-3.84</i>	<i>0.413</i>	No , <i>Please refer to page 27</i>





<i>(x,y)</i>	<i>d_{xy}, cm</i>	<i>simultaneous Tx SAR</i>	<i>remarks</i>
(1,2)	2.0	No	<i>d_{xy} < 2.5cm</i> <i>the Sum of all 1-g SAR < 1.6 W/kg,</i> <i>please refer to page 33</i>
(1,3)	2.0	No	<i>d_{xy} < 2.5cm</i> <i>The Sum of all 1-g SAR < 1.6 W/kg,</i> <i>please refer to page 33</i>

9.7 SAR MEASUREMENT RESULTS


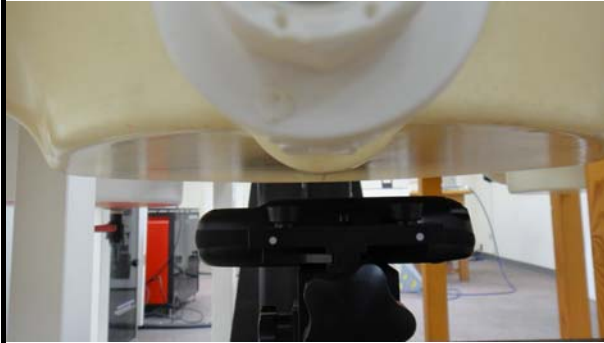
Left head / Right Head mode:

						
Left Cheek position		Right Cheek position				
						
Left Tilted position		Right Tilted position				
Test mode: GSM 850 , Duty Cycle: 12.5%, Crest Factor: 8 Depth of liquid: 15.0 cm						
EUT Position	Antenna	Frequency		Liquid Temp_°C	SAR (10g) (W/kg)	Limit (W/kg)
		Channel	MHz			
Left Cheek	Fixed	190	836.6	23.2	0.431	1.6
Left Tilted	Fixed	190	836.6	23.2	0.210	
Right Cheek	Fixed	190	836.6	23.2	0.287	
Right Tilted	Fixed	190	836.6	23.2	0.209	
Test mode: GSM 1900 , Duty Cycle: 12.5%, Crest Factor: 8 Depth of liquid: 15.0 cm						
EUT Position	Antenna	Frequency		Liquid Temp_°C	SAR (10g) (W/kg)	Limit (W/kg)
		Channel	MHz			
Left Cheek	Fixed	512	1710.2	23.2	0.13	1.6
Left Tilted	Fixed	512	1710.2	23.2	0.096	
Right Cheek	Fixed	512	1710.2	23.2	0.106	
Right Tilted	Fixed	512	1710.2	23.2	0.054	
Notes: 1) Please refer to attachment for the result presentation in plot format.						

Left head / Right Head mode:

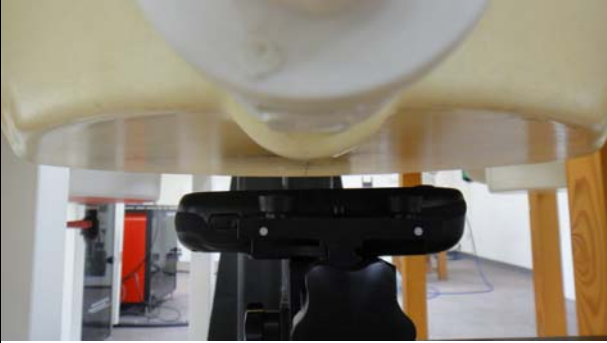
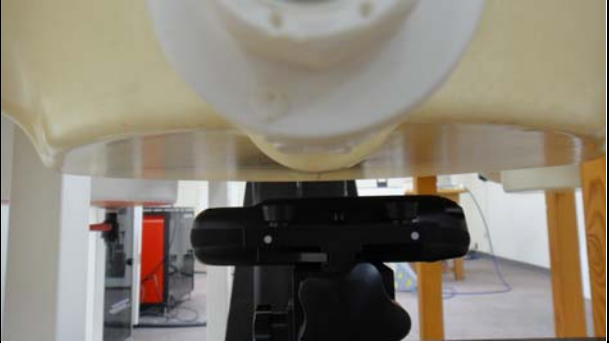
						
Left Cheek position		Right Cheek position				
						
Left Tilted position		Right Tilted position				
Test mode: WCDMA band V , Duty Cycle: 100%, Crest Factor: 1				Depth of liquid: 15.0 cm		
EUT Position	Antenna	Frequency		Liquid Temp_°C	SAR (1g) (W/kg)	EUT Position
		Channel	MHz			
Left Cheek	Fixed	4132	826.4	23.2	0.415	1.6
Left Tilted	Fixed	4132	826.4	23.2	0.231	
Right Cheek	Fixed	4132	826.4	23.2	0.313	
Right Tilted	Fixed	4132	826.4	23.2	0.194	
Test mode: WCDMA band II , Duty Cycle: 100%, Crest Factor: 1				Depth of liquid: 15.0 cm		
EUT Position	Antenna	Frequency		Liquid Temp_°C	SAR (10g) (W/kg)	Limit (W/kg)
		Channel	MHz			
Left Cheek	Fixed	9538	1907.6	23.2	0.102	1.6
Left Tilted	Fixed	9538	1907.6	23.2	0.086	
Right Cheek	Fixed	9538	1907.6	23.2	0.198	
Right Tilted	Fixed	9538	1907.6	23.2	0.105	
Test mode: WCDMA band IV , Duty Cycle: 100%, Crest Factor: 1				Depth of liquid: 15.0 cm		
EUT Position	Antenna	Frequency		Liquid Temp_°C	SAR (10g) (W/kg)	Limit (W/kg)
		Channel	MHz			
Left Cheek	Fixed	1513	1752.6	23.2	0.054	1.6
Left Tilted	Fixed	1513	1752.6	23.2	0.086	
Right Cheek	Fixed	1513	1752.6	23.2	0.091	
Right Tilted	Fixed	1513	1752.6	23.2	0.069	
Notes: 1) Please refer to attachment for the result presentation in plot format.						

Body position:

						
Body position face up		Body position face down				
Test mode: WCDMA band V , Duty Cycle: 100%, Crest Factor: 1				Depth of liquid: 15.0 cm		
EUT Position	Antenna	Frequency		Liquid Temp_°C	SAR (1g) (W/kg)	Limit (W/kg)
		Channel	MHz			
Face Up	Fixed	4132	826.4	23.2	0.289	Face Up
Face Down	Fixed	4132	826.4	23.2	0.375	
Test mode: WCDMA band II , Duty Cycle: 25%, Crest Factor: 4				Depth of liquid: 15.0 cm		
EUT Position	Antenna	Frequency		Frequency	SAR (1g) (W/kg)	Limit (W/kg)
		Channel	MHz			
Face Up	Fixed	9538	1907.6	23.2	0.125	1.6
Face Down	Fixed	9538	1907.6	23.2	0.705	
Test mode: WCDMA band IV , Duty Cycle: 100%, Crest Factor: 1				Depth of liquid: 15.0 cm		
EUT Position	Antenna	Frequency		Liquid Temp_°C	SAR (1g) (W/kg)	Limit (W/kg)
		Channel	MHz			
Face Up	Fixed	1513	1752.6	23.2	0.095	1.6
Face Down	Fixed	1513	1752.6	23.2	0.722	
Notes: 1) Front panel / Bottom face in parallel with flat phantom 2) Please refer to attachment for the result presentation in plot format.						

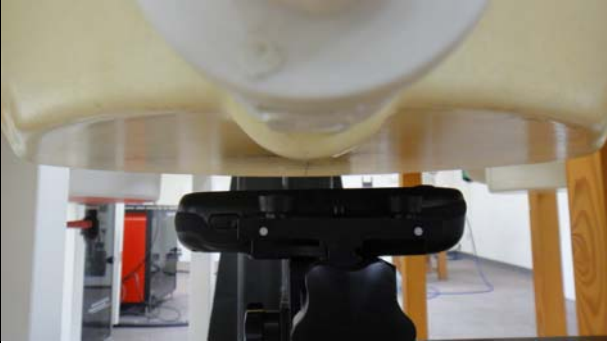
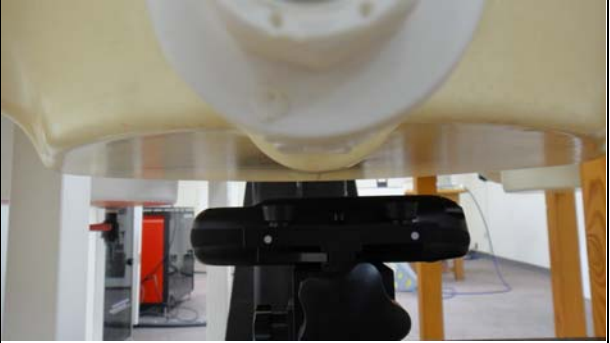


Body position

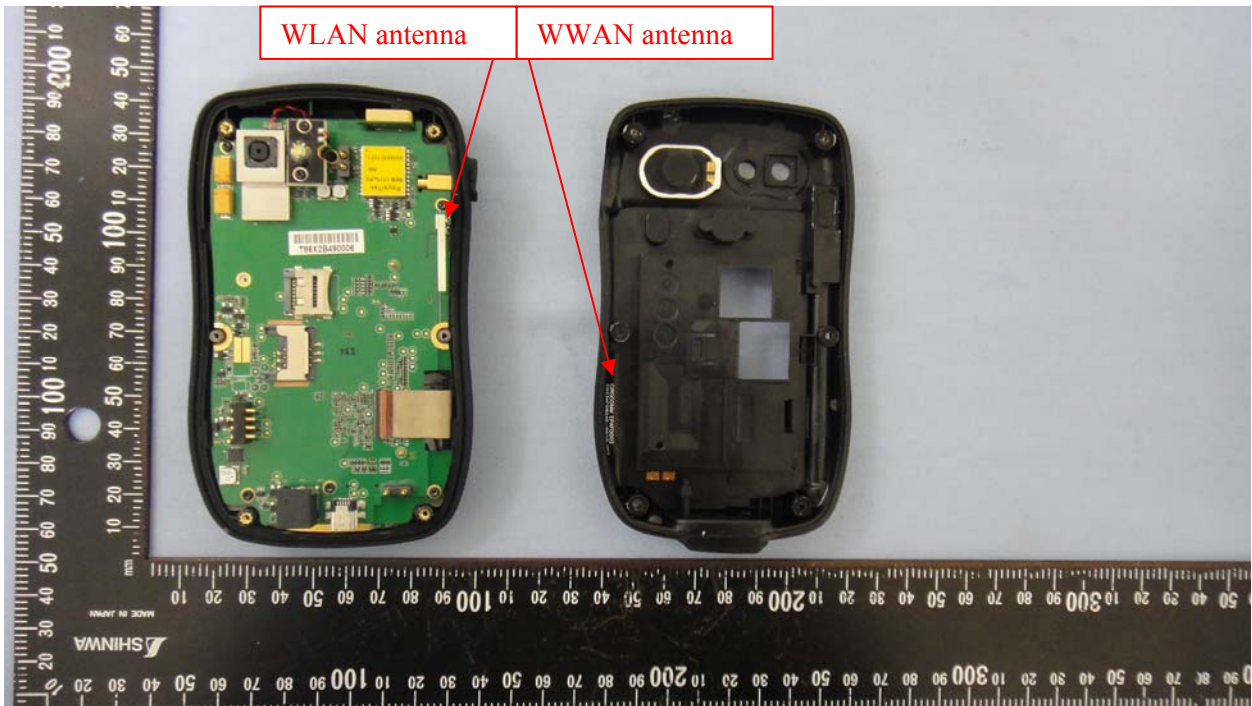
						
Body position face up		Body position face down				
Test mode: GSM 850 , Duty Cycle: 12.5%, Crest actor: 8				Depth of liquid: 15.0 cm		
EUT Position	Antenna	Frequency		Liquid Temp_°C	SAR (1g) (W/kg)	Limit (W/kg)
		Channel	MHz			
Face Up	Fixed	190	836.6	23.2	0.326	1.6
Face Down	Fixed	190	836.6	23.2	0.440	
Test mode: GPRS 850 , Duty Cycle: 25%, Crest Factor: 4				Depth of liquid: 15.0 cm		
EUT Position	Antenna	Frequency		Liquid Temp_°C	SAR (1g) (W/kg)	Limit (W/kg)
		Channel	MHz			
Face Up	Fixed	190	836.6	23.2	0.266	1.6
Face Down	Fixed	190	836.6	23.2	0.287	
Notes: 1) Front panel / Bottom face in parallel with flat phantom 2) Please refer to attachment for the result presentation in plot format.						



Body position:

						
Body position face up		Body position face down				
Test mode: GSM 1900 , Duty Cycle: 12.5%, Crest factor: 8				Depth of liquid: 15.0 cm		
EUT Position	Antenna	Frequency		Liquid Temp_°C	SAR (1g) (W/kg)	Limit (W/kg)
		Channel	MHz			
Face Up	Fixed	512	1850.2	23.2	0.083	1.6
Face Down	Fixed	512	1850.2	23.2	0.294	
Test mode: GPRS 1900 , Duty Cycle: 25%, Crest Factor: 4				Depth of liquid: 15.0 cm		
EUT Position	Antenna	Frequency		Liquid Temp_°C	SAR (1g) (W/kg)	Limit (W/kg)
		Channel	MHz			
Face Up	Fixed	512	1850.2	23.2	0.042	1.6
Face Down	Fixed	512	1850.2	23.2	0.028	
Test mode: 802.11b , Duty Cycle: 100%, Crest Factor: 1				Depth of liquid: 15.0 cm		
EUT Position	Antenna	Frequency		Liquid Temp_°C	SAR (1g) (W/kg)	Limit (W/kg)
		Channel	MHz			
Face Up	Fixed	11	2462	23.2	0.079	1.6
Face Down	Fixed	11	2462	23.2	0.279	
Notes: 1) Front panel / Bottom face in parallel with flat phantom 2) Please refer to attachment for the result presentation in plot format.						

10. EUT PHOTO





11. EQUIPMENT LIST & CALIBRATION STATUS

Name of Equipment	Manufacturer	Type/Model	Serial Number	Calibration Cycle(days)	Calibration Due
S-Parameter Network Analyzer	Agilent	E8358A	US40260243	365	07/04/2012
Electronic Probe kit	Hewlett Packard	85070D	N/A	N/A	N/A
Spectrum Analyzer	Agilent	E4446A	US42510252	365	11/04/2012
Power Meter	Anritsu	ML2495A	1012009	365	03/27/2012
Power Sensor	Anritsu	MA2411B	0917072	365	03/08/2012
Data Acquisition Electronics (DAE)	SPEAG	DAE4	877	365	03/17/2012
Data Acquisition Electronics (DAE)	SPEAG	DAE4	558	365	07/25/2012
Dosimetric E-Field Probe	SPEAG	EX3DV4	3665	365	04/18/2012
Dosimetric E-Field Probe	SPEAG	EX3DV4	3554	365	09/28/2012
900 MHz System Validation Dipole	SPEAG	D900V2	1d121	365	07/18/2012
835 MHz System Validation Dipole	SPEAG	D835V2	4d015	365	03/22/2012
1800 MHz System Validation Dipole	SPEAG	D1800V2	2d052	365	07/15/2012
1900 MHz System Validation Dipole	SPEAG	D1900V2	5d018	365	06/15/2012
2450 MHz System Validation Dipole	SPEAG	D2450V2	728	365	11/21/2012
Probe Alignment Unit	SPEAG	LB (V2)	348	N/A	N/A
Robot	Staubli	TX60L	F08/5A6GA1/ A/01	N/A	N/A
SAM Twin Phantom V4.0	SPEAG	N/A	N/A	N/A	N/A
Devices Holder	SPEAG	N/A	N/A	N/A	N/A
Head/ Muscle 835 MHz	CCS	H/M 835A	N/A	N/A	N/A
Head/ Muscle 1800 MHz	CCS	H/M 1800A	N/A	N/A	N/A
Head/ Muscle 1900 MHz	CCS	H/M 1900A	N/A	N/A	N/A
Head/ Muscle 2450 MHz	CCS	H/M 2450A	N/A	N/A	N/A



12. FACILITIES

All measurement facilities used to collect the measurement data are located at

- No. 81-1, Lane 210, Bade Rd. 2, Luchu Hsiang, Taoyuan Hsien, Taiwan, R.O.C.
- No.11, Wu-Gong 6th Rd., Wugu Industrial Park, New Taipei City 248, Taiwan (R.O.C.)
- No. 199, Chunghsen Road, Hsintien City, Taipei Hsien, Taiwan, R.O.C.

13. REFERENCES

- [1] Federal Communications Commission, \Report and order: Guidelines for evaluating the environ-mental effects of radiofrequency radiation”, Tech. Rep. FCC 96-326, FCC, Washington, D.C. 20554, 1996.
- [2] David L. Means Kwok Chan, Robert F. Cleveland, \Evaluating compliance with FCC guidelines for human exposure to radiofrequency electromagnetic fields”, Tech. Rep., Federal Communication Commision, O_cce of Engineering & Technology, Washington, DC, 1997.
- [3] Thomas Schmid, Oliver Egger, and Niels Kuster, \Automated E-_eld scanning system for dosimetric assessments”, IEEE Transactions on Microwave Theory and Techniques, vol. 44, pp. 105{113, Jan. 1996.
- [4] Niels Kuster, Ralph K.astle, and Thomas Schmid, \Dosimetric evaluation of mobile communications equipment with known precision”, IEICE Transactions on Communications, vol. E80-B, no. 5, pp. 645{652, May 1997.
- [5] CENELEC, \Considerations for evaluating of human exposure to electromagnetic fields (EMFs) from mobile telecommunication equipment (MTE) in the frequency range 30MHz – 6GHz”, Tech. Rep., CENELEC, European Committee for Electrotechnical Standardization, Brussels, 1997.
- [6] ANSI, ANSI/IEEE C95.1-1992: IEEE Standard for Safety Levels with Respect to Human Exposure to Radio Frequency Electromagnetic Fields, 3 kHz to 300 GHz, The Institute of Electrical and Electronics Engineers, Inc., New York, NY 10017, 1992.
- [7] Katja Pokovic, Thomas Schmid, and Niels Kuster, \Robust setup for precise calibration of E-_eld probes in tissue simulating liquids at mobile communications frequencies”, in ICECOM _97, Dubrovnik, October 15{17, 1997, pp. 120{124.
- [8] Katja Pokovic, Thomas Schmid, and Niels Kuster, \E-_eld probe with improved isotropy in brain simulating liquids”, in Proceedings of the ELMAR, Zadar, Croatia, 23{25 June, 1996, pp. 172{175.
- [9] Volker Hombach, Klaus Meier, Michael Burkhardt, Eberhard K. uhn, and Niels Kuster, \The dependence of EM energy absorption upon human head modeling at 900 MHz”, IEEE Transactions on Microwave Theory and Techniques, vol. 44, no. 10, pp. 1865{1873, Oct. 1996.
- [10] Klaus Meier, Ralf Kastle, Volker Hombach, Roger Tay, and Niels Kuster, \The dependence of EM energy absorption upon human head modeling at 1800 MHz”, IEEE Transactions on Microwave Theory and Techniques, Oct. 1997, in press.
- [11] W. Gander, Computermathematik, Birkhaeuser, Basel, 1992.
- [12] W. H. Press, S. A. Teukolsky, W. T. Vetterling, and B. P. Flannery, Numerical Receptions in C, The Art of Scientific Computing, Second Edition, Cambridge University Press, 1992..Dosimetric Evaluation of Sample device, month 1998 9
- [13] NIS81 NAMAS, \The treatment of uncertainty in EMC measurement”, Tech. Rep., NAMAS Executive, National Physical Laboratory, Teddington, Middlesex, England, 1994.
- [14] Barry N. Taylor and Christ E. Kuyatt, \Guidelines for evaluating and expressing the uncertainty of NIST measurement results”, Tech. Rep., National Institute of Standards and Technology, 1994. Dosimetric Evaluation of Sample device, month 1998 10



14. ATTACHMENTS

Exhibit	Content
1	System Performance Check Plots
2	SAR Test Plots
3	Probe_EX3DV4_sn3554_20110929c
4	Dipole_D835V2_sn4d015_20110323c
5	Dipole_D1800v2_sn2d052_20110716c
6	Dipole_D1900v2_sn5d018_20110616c
7	Dipole_D2450v2_sn728_20111122c

END OF REPORT