

Test Laboratory: Compliance Certification Services Inc.

## D2450V2 SN-728 Body

**DUT: Dipole 2450 MHz; Type: D2450V2; Serial: D2450V2 - SN:728**

Communication System: CW2450; Frequency: 2450 MHz; Duty Cycle: 1:1

Medium parameters used:  $f = 2450$  MHz;  $\sigma = 1.92$  mho/m;  $\epsilon_r = 50.7$ ;  $\rho = 1000$  kg/m<sup>3</sup>

Phantom section: Flat Section

Air Temperature: 24.2 deg C; Liquid Temperature: 23.2 deg C

Area Scan Find Secondary Maximum Within 2dB and with a peak SAR value greater than 0.0012W/kg

### DASY4 Configuration:

- Probe: EX3DV4 - SN3554; ConvF(6.18, 6.18, 6.18);
- Sensor-Surface: 2.5mm (Mechanical Surface Detection)
- Electronics: DAE4 Sn554; Calibrated: 2011/7/26
- Phantom: ELI 4.0; Type: QDOVA001BA; Serial: 1052
- Measurement SW: DASY4, V4.7 Build 80; Postprocessing SW: SEMCAD, V1.8 Build 186

**Pin=250mW,d=10mm/Area Scan (6x6x1):** Measurement grid: dx=15mm, dy=15mm

Maximum value of SAR (measured) = 14.4 mW/g

**Pin=250mW,d=10mm/Zoom Scan (7x7x7)/Cube 0:**

Measurement grid: dx=5mm, dy=5mm, dz=5mm

Reference Value = 97.7 V/m; Power Drift = -0.086 dB

Peak SAR (extrapolated) = 26.7 W/kg

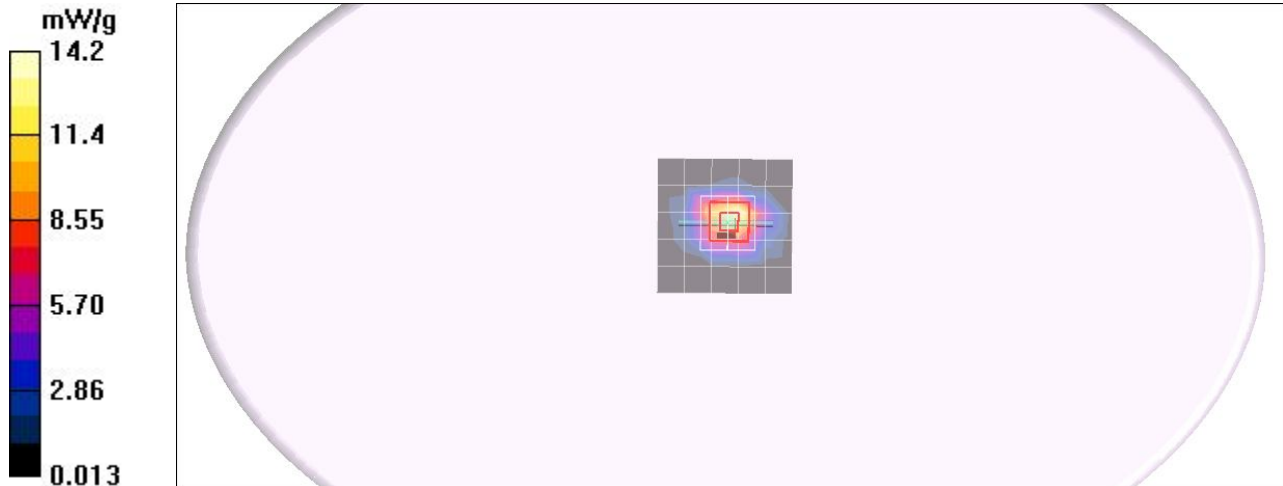
**SAR(1 g) = 13 mW/g; SAR(10 g) = 6.13 mW/g**

Maximum value of SAR (measured) = 18.4 mW/g

**Pin=250mW,d=10mm/Z Scan (1x1x21):**

Measurement grid: dx=20mm, dy=20mm, dz=5mm

Maximum value of SAR (measured) = 19.9 mW/g



# SAR(x,y,z,f0)

SAR; Z Scan: Value Along Z, X=0, Y=0

