

**Pictures of GeoExplorer 6000 series Handheld (Internal)**

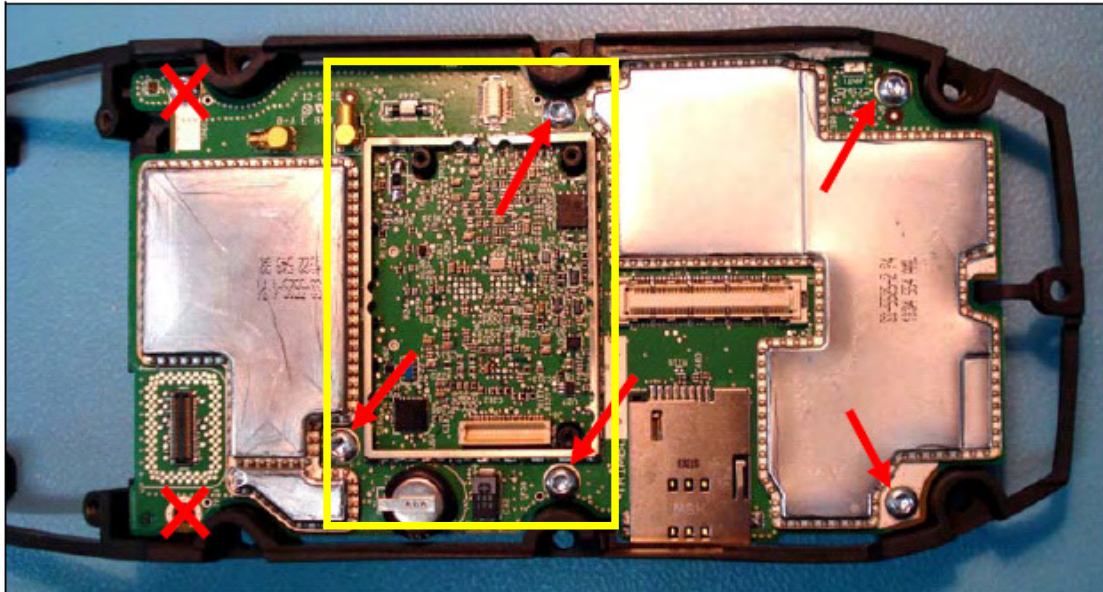


Fig 1 – Geoexplorer 6000 series handheld chassis, with main Board 88010-XX-X with Modem card NOT fitted beneath Screened Case



Fig2 Close up of HC25 Modem Card—GeoExplorer XH 3.5G and XT 3.5G only

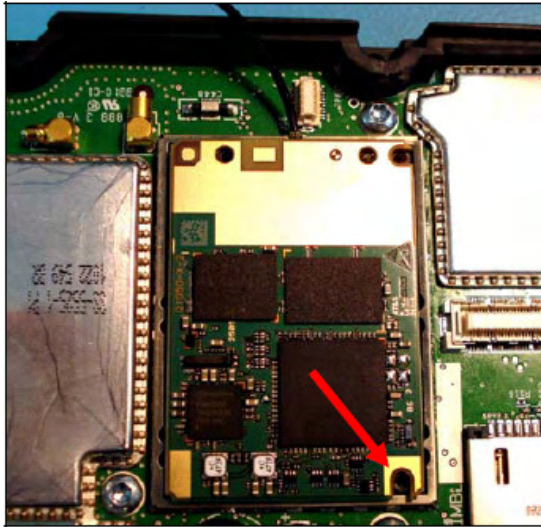


Fig 3 Modem card fitted- GeoExplorer XT 3.5G and XH 3.5 G Only

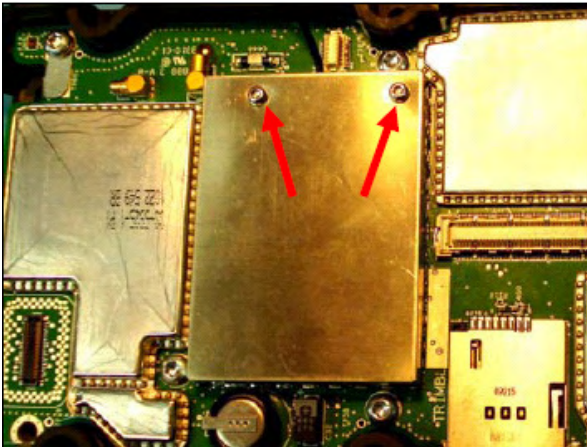


Fig 4 Screen /Heatsink Fitted



Fig 5 Rear view of Display/Touch screen

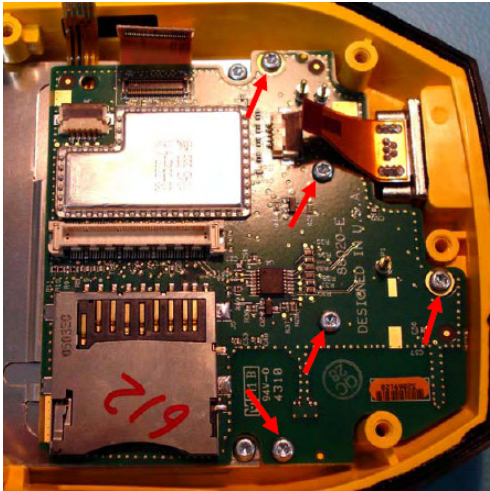


Fig 5 User Interface board

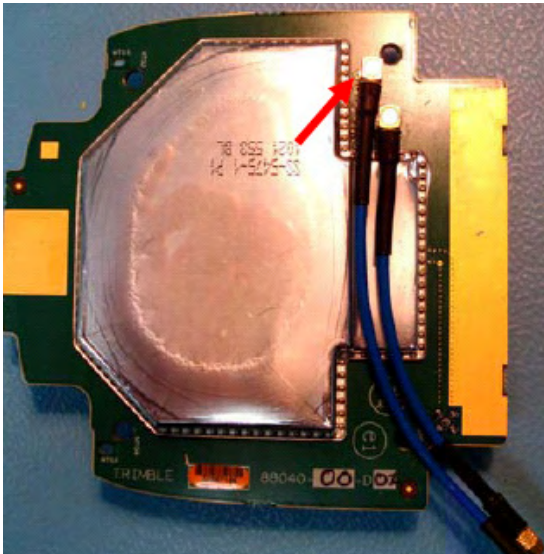


Fig 6 Underneath of screened LNA card

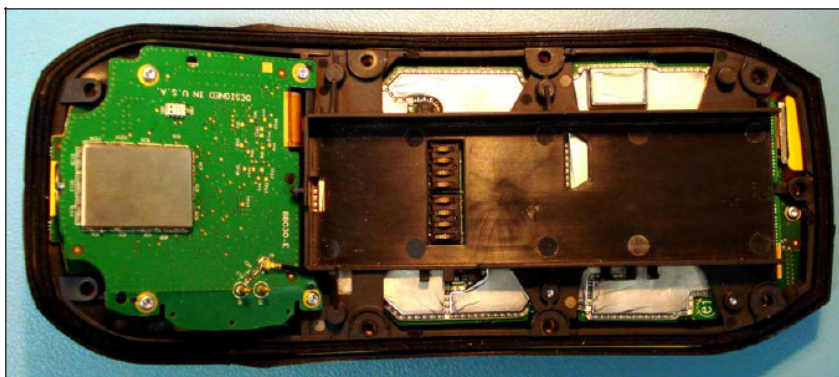


Fig 6 Underside of GeoExplorer 6000 Chassis, showing Battery Swipes and sensor card mounted

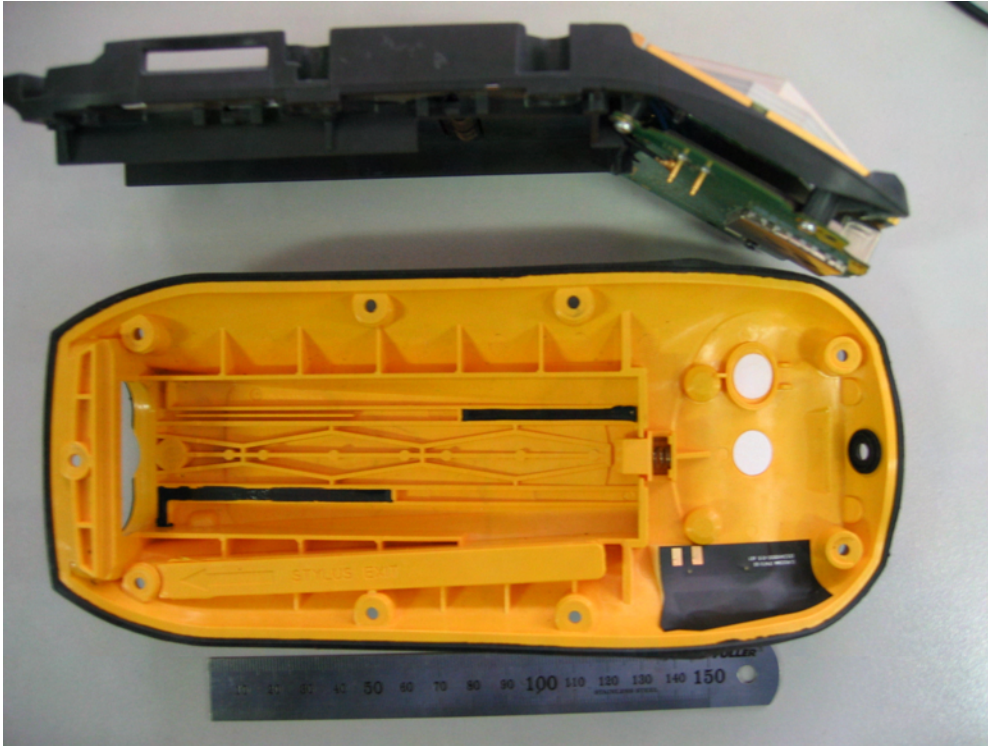


Fig7 Side view of Chassis Showing Sensor Board Antenna Pins, alongside lower assembly fitted with GSM /Pentaband Foil antenna.

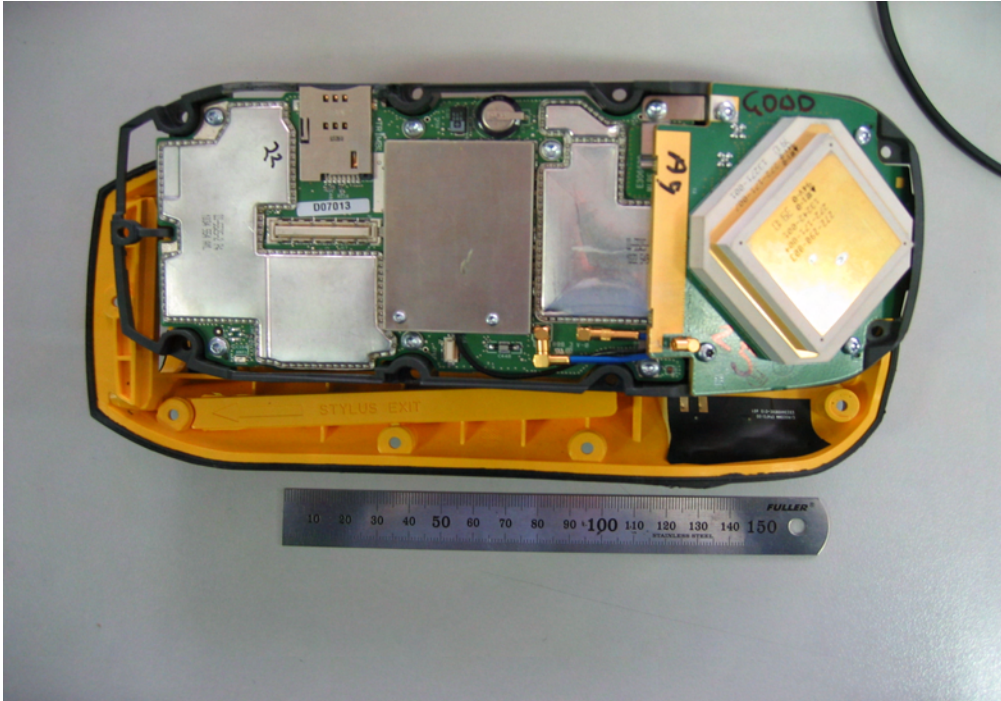


Fig 8 Top view of Chassis showing GNSS antenna and Main Board