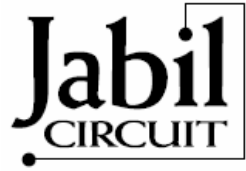
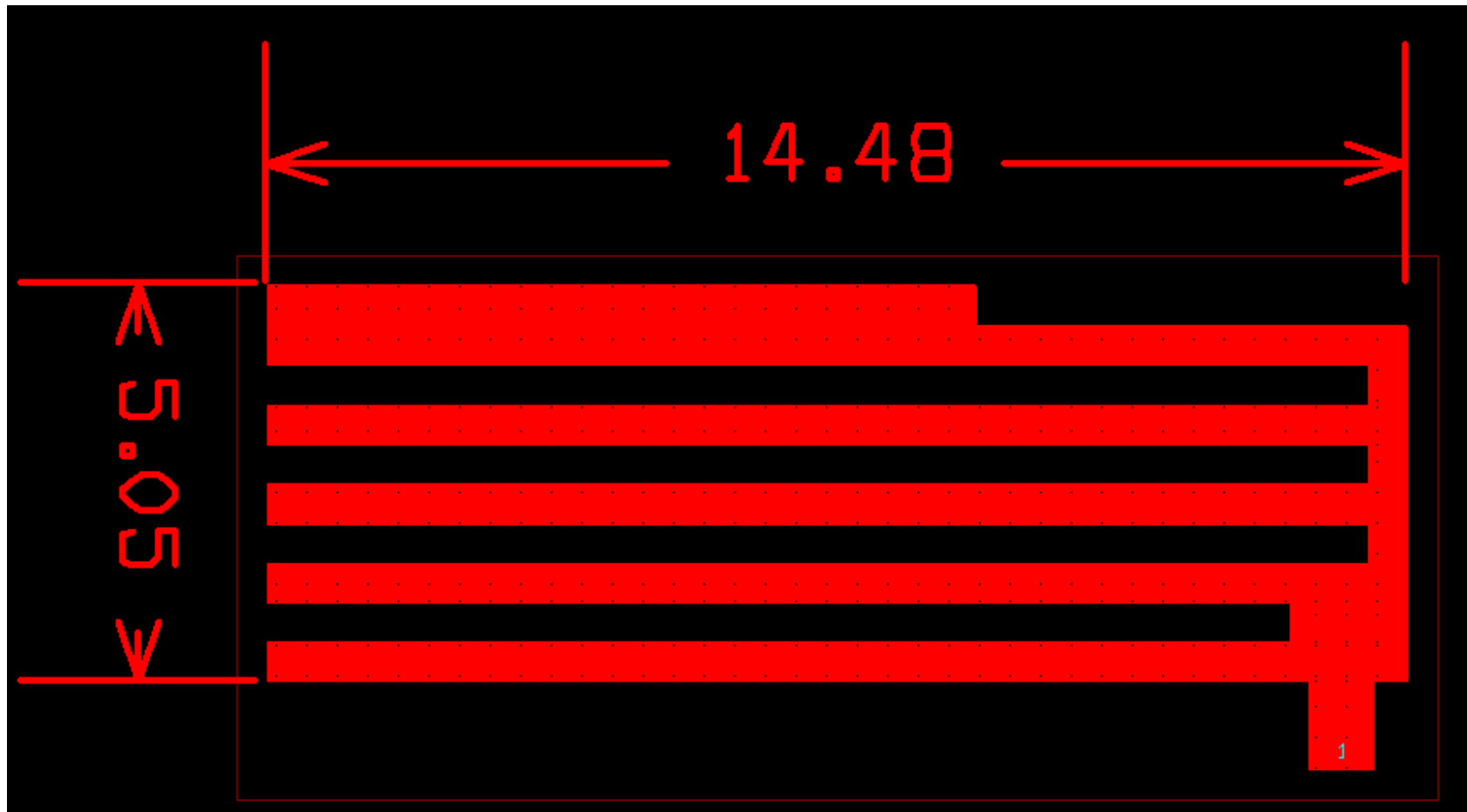
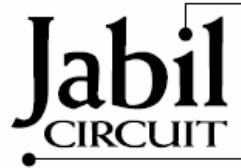


PCB Type Bluetooth Antenna Specification



Dimension(mm)



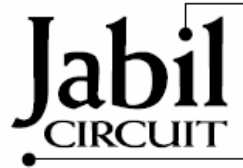


Performance

Far-Field Patterns
Frequency: 2.4000

Summary of Antenna Performance

Frequency :	2.400	GHz
Directivity :	7.6	dB
Peak Gain :	2.8	dB
HPBW :	48.6	deg
Pointing (Th, Phi) =	(110.6, 111.4)	deg
(Thx, Thy) =	(-40.4, 103.0)	deg
Sidelobe Level :	-5.9	dB
AR @ Peak :	10.6	dB



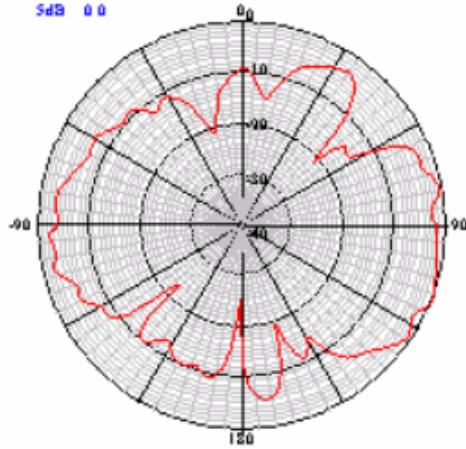
Radiation Pattern

Far-Field Patterns : 4 Cuts - 2 Radial, 2 Angular

Frequency: 2.4000

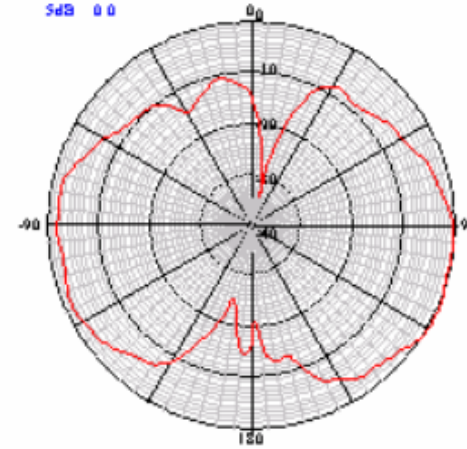
MAX -10.5
3dB 0.0
4dB 0.0
5dB 0.0

$\Theta_h = 0 \text{ deg}$



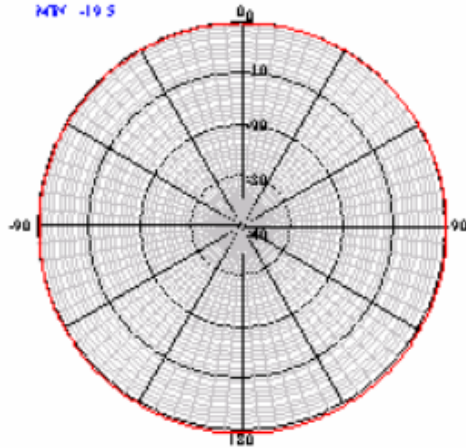
MAX -5.1
3dB 0.0
4dB 0.0
5dB 0.0

$\Theta_h = 90 \text{ deg}$



MAX -19.5
AVE -19.5
MIN -19.5

$\Theta_h = 0 \text{ deg}$



MAX -1.0
AVE -3.4
MIN -44.6

$\Theta_h = 90 \text{ deg}$

