

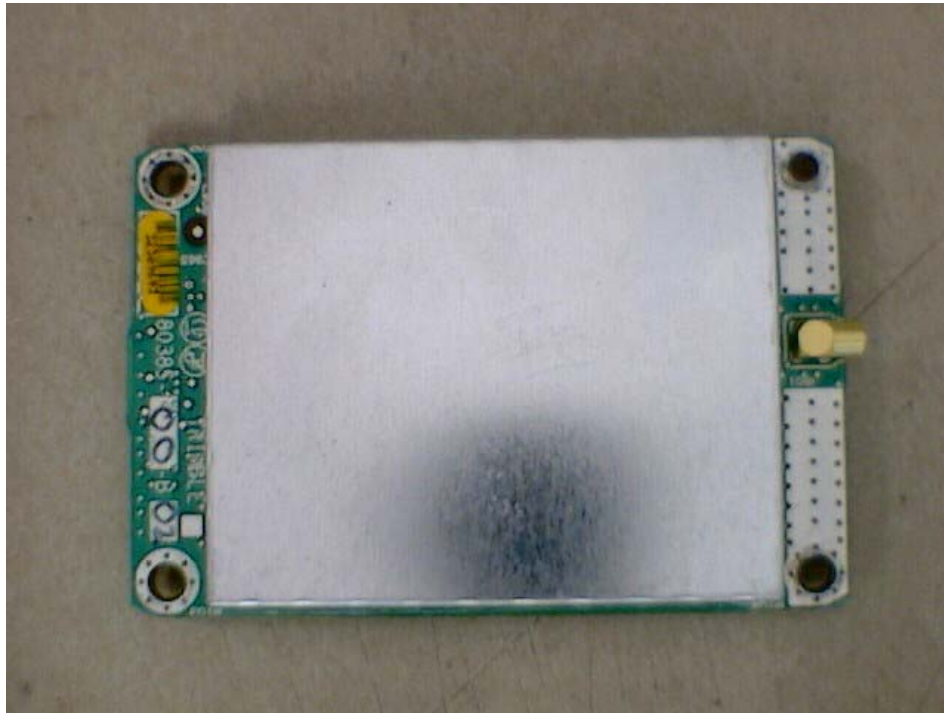
11.7 EUT – Cover off View



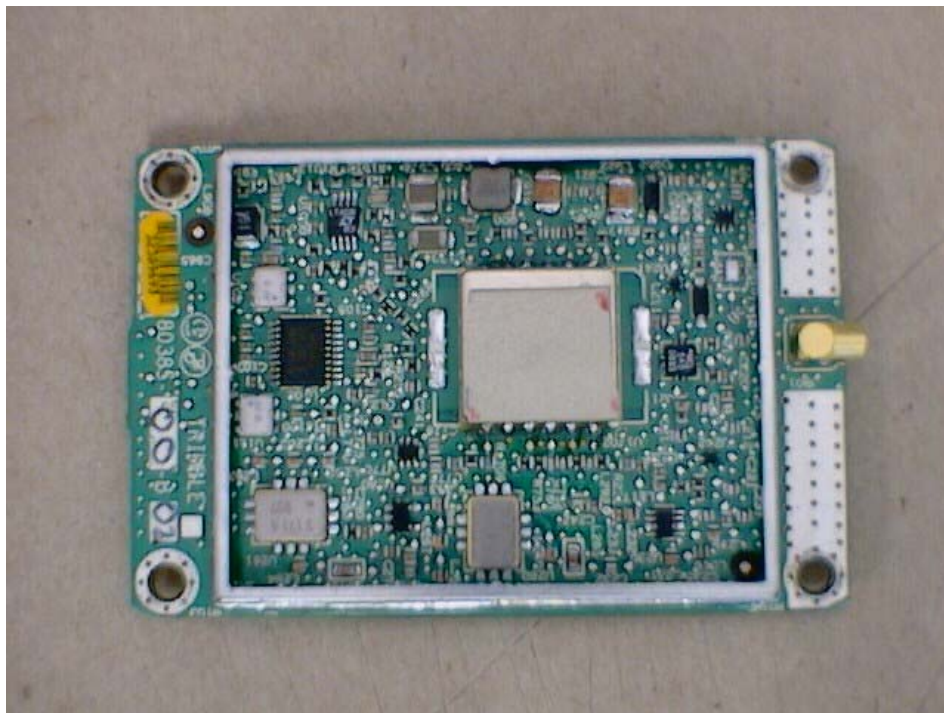
11.8 EUT – Bottom Enclosure View



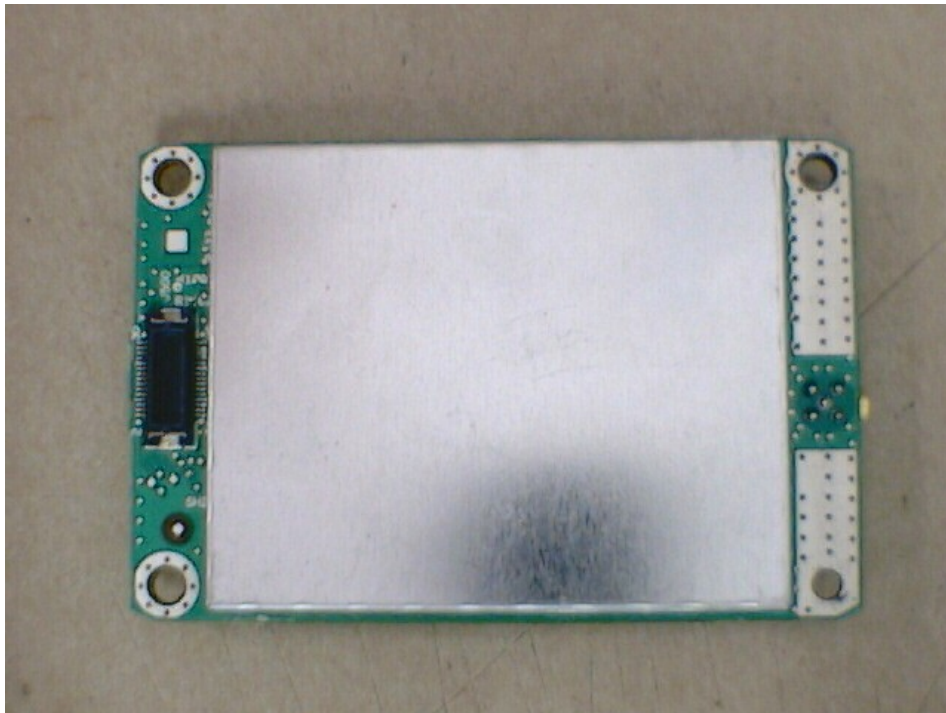
11.9 EUT - 900 MHz Module with Shield Top View



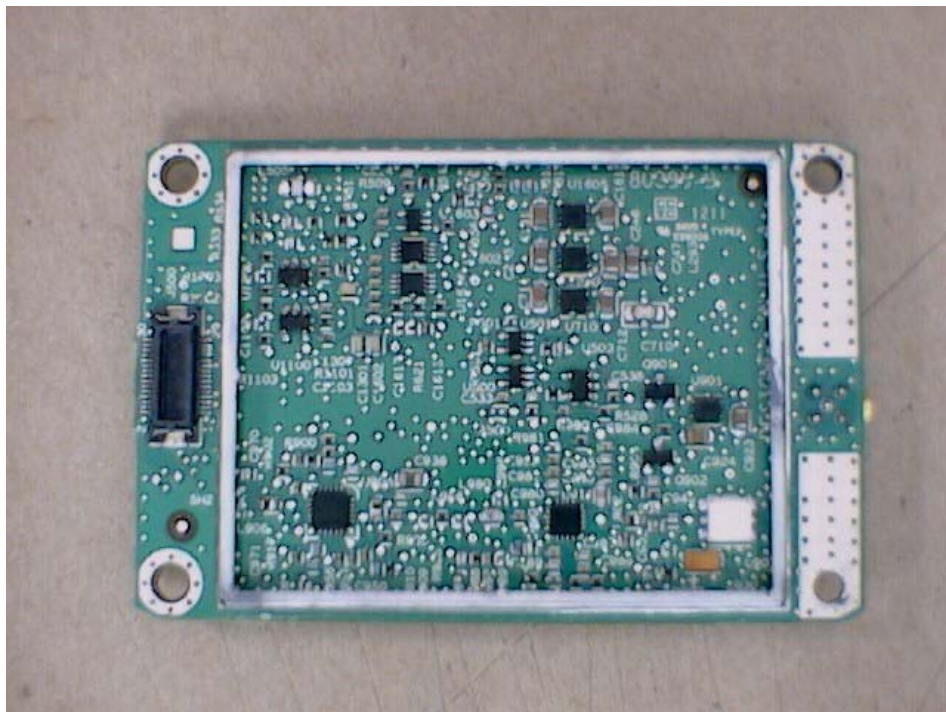
11.10 EUT - 900 MHz Module without Shield Top View



11.11 EUT - 900 MHz Module with Shield Bottom View



11.12 EUT - 900 MHz Module without Shield Bottom View



11.13 EUT – GSM/UMTS Radio Board Top ViewView



11.14 EUT – GSM/UMTS Radio Board Top ViewView



11.15 EUT – GSM Module with Shield Top View



11.16 EUT – GSM Module without Shield Top View



11.17 EUT – GSM Module with Shield Bottom View



11.18 EUT – GSM Module without Shield Bottom View



11.19 EUT - Baseband and GNSS Receiver Board Top View



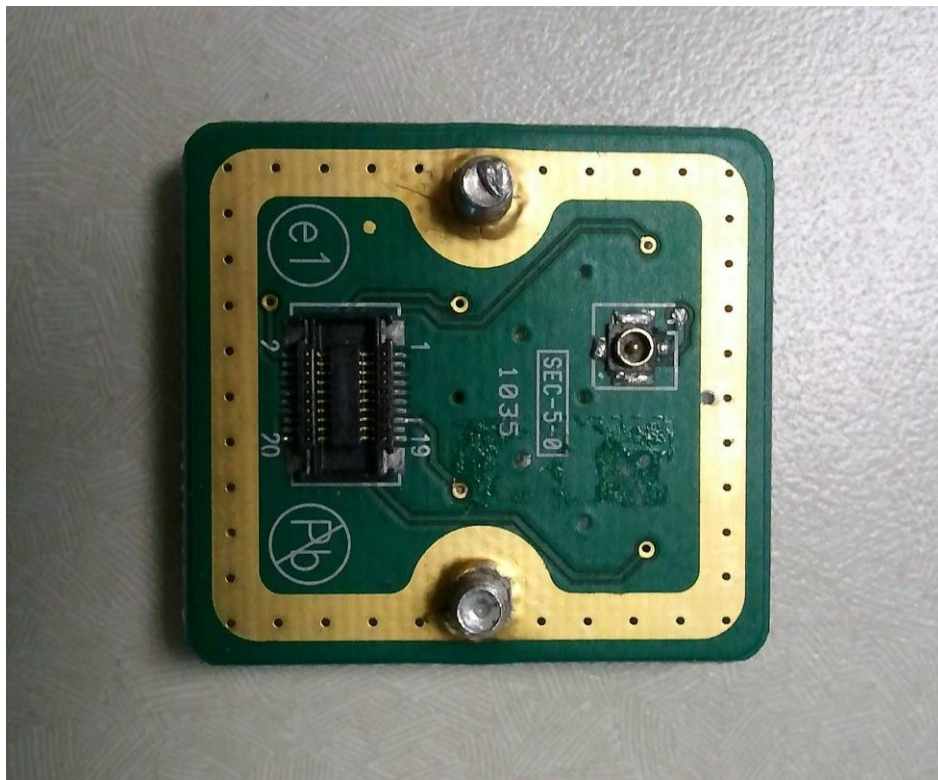
11.20 EUT - Baseband and GNSS Receiver Board Bottom View



11.21 EUT – Wi-Fi/BT Taoglass SWLP Top View



11.22 EUT – Wi-Fi/BT Taoglass SWLP Bottom View



11.23 EUT – Wi-Fi/BT Taoglass SWLP Angle View



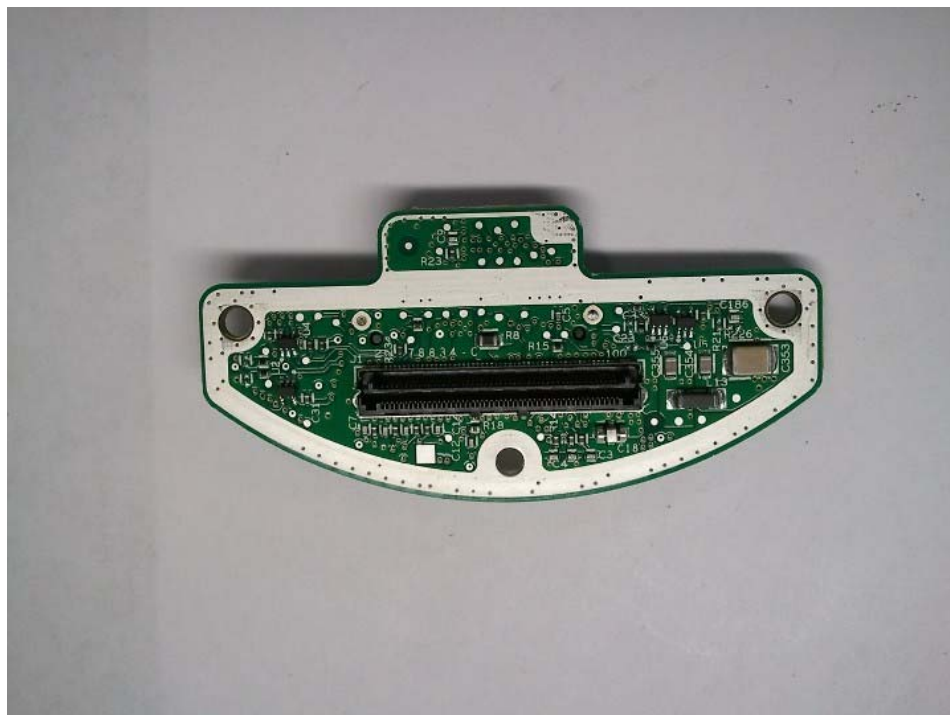
11.24 EUT – Inside Enclosure and Interface Board Top View



11.25 EUT – Inside Enclosure and Interface Board Bottom View



11.26 EUT –Interface Board Top View



11.27 EUT –Interface Board Bottom View



11.28 EUT – I/O and Front Panel Top View



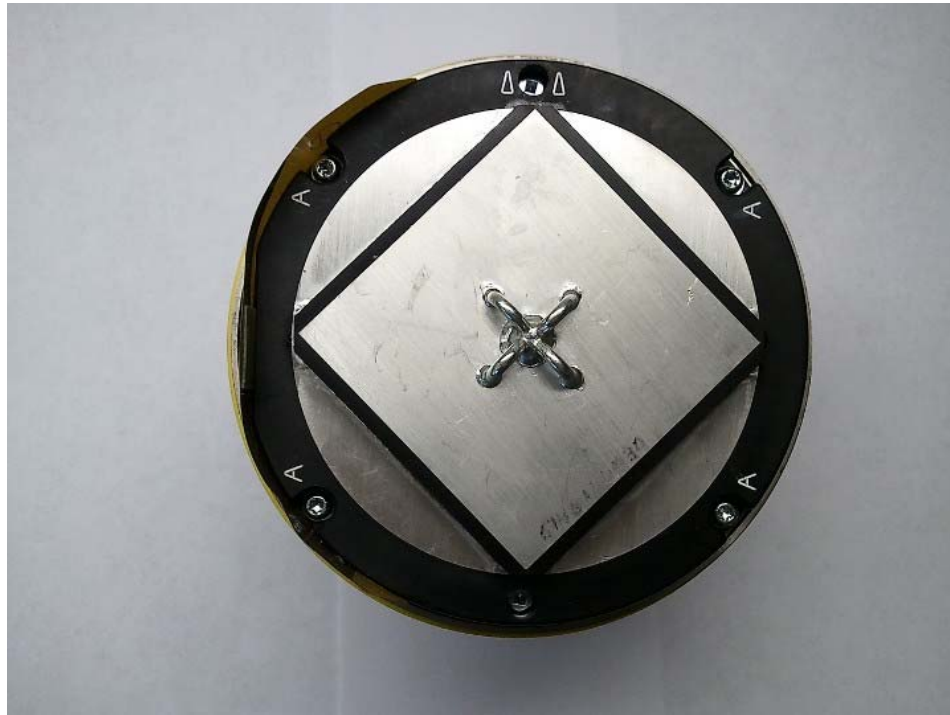
11.29 EUT – I/O and Front Panel Bottom view



11.30 EUT – GSM/UMTS Antenna View



11.31 EUT – GNSS Antenna Top View



11.32 EUT – GNSS Antenna Bottom View



11.33 AC/DC Adaptor



11.34 900 MHz Radio External Antenna View



--- END OF REPORT ---