

PHOTOS OF THE TESTED EUT

The following photos are attached:

- Photo 1. Top of EUT, Cover On, Case Taped
- Photo 2. Bottom of EUT, Cover On, Case soldered and Taped

Photo 1. Top of EUT, Cover On, Case Taped

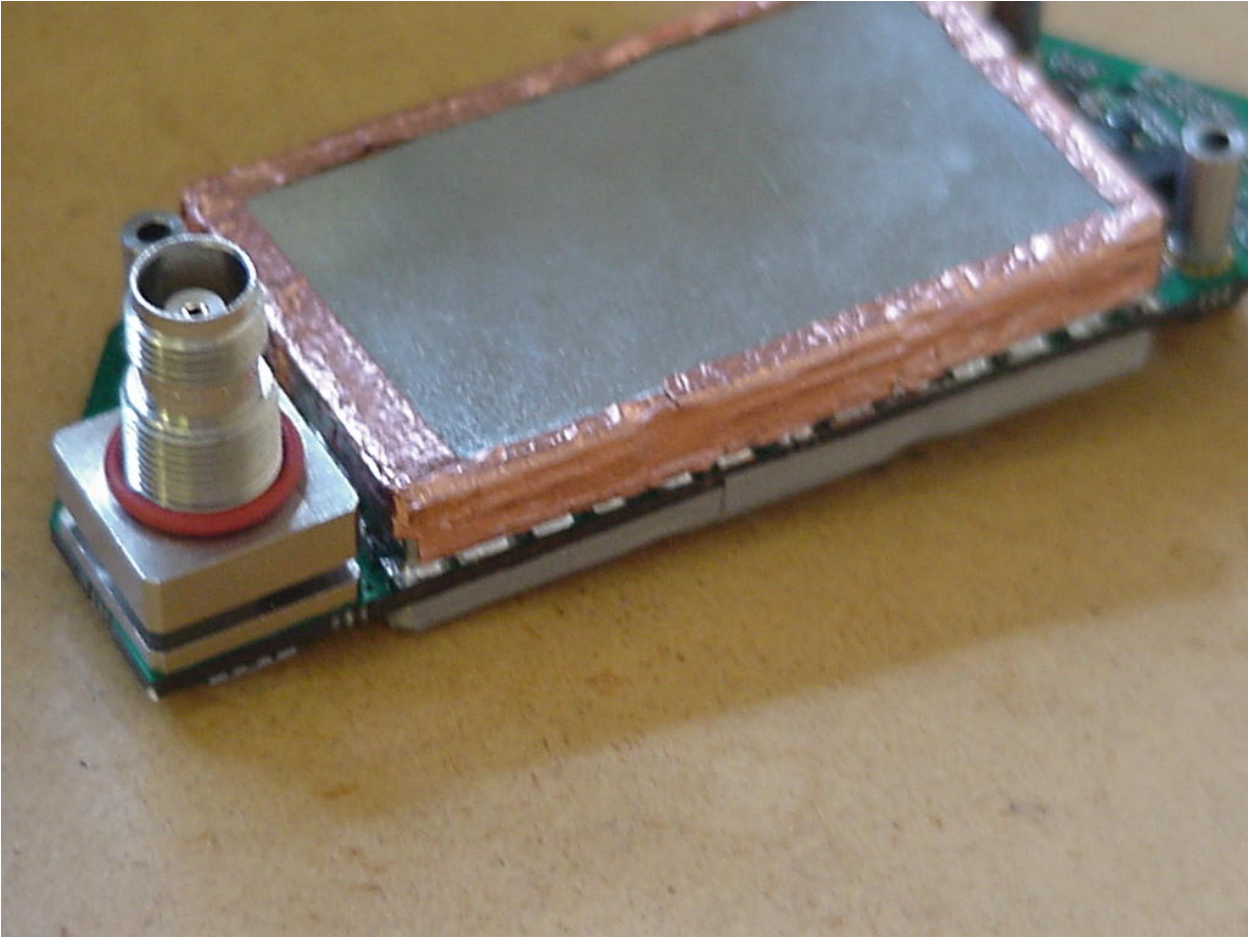
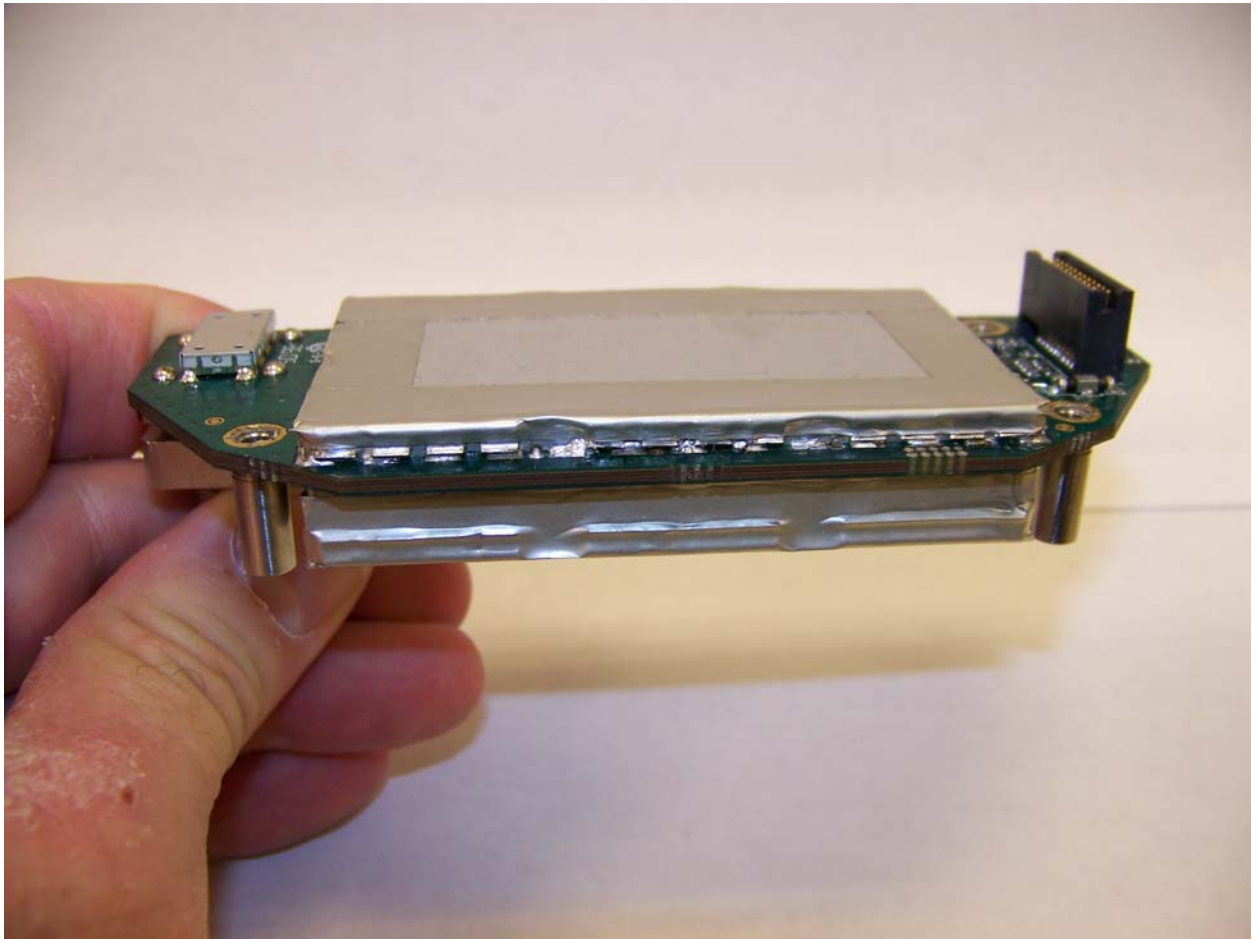


Photo 2. Bottom of EUT, Cover On, Case Soldered and Taped



PHOTOS OF THE TESTED EUT

The following photos are attached:

Photo 3. Top of EUT, Cover Off
Photo 4. Bottom of EUT, Cover Off

Photo 3. Top of EUT, Cover Off

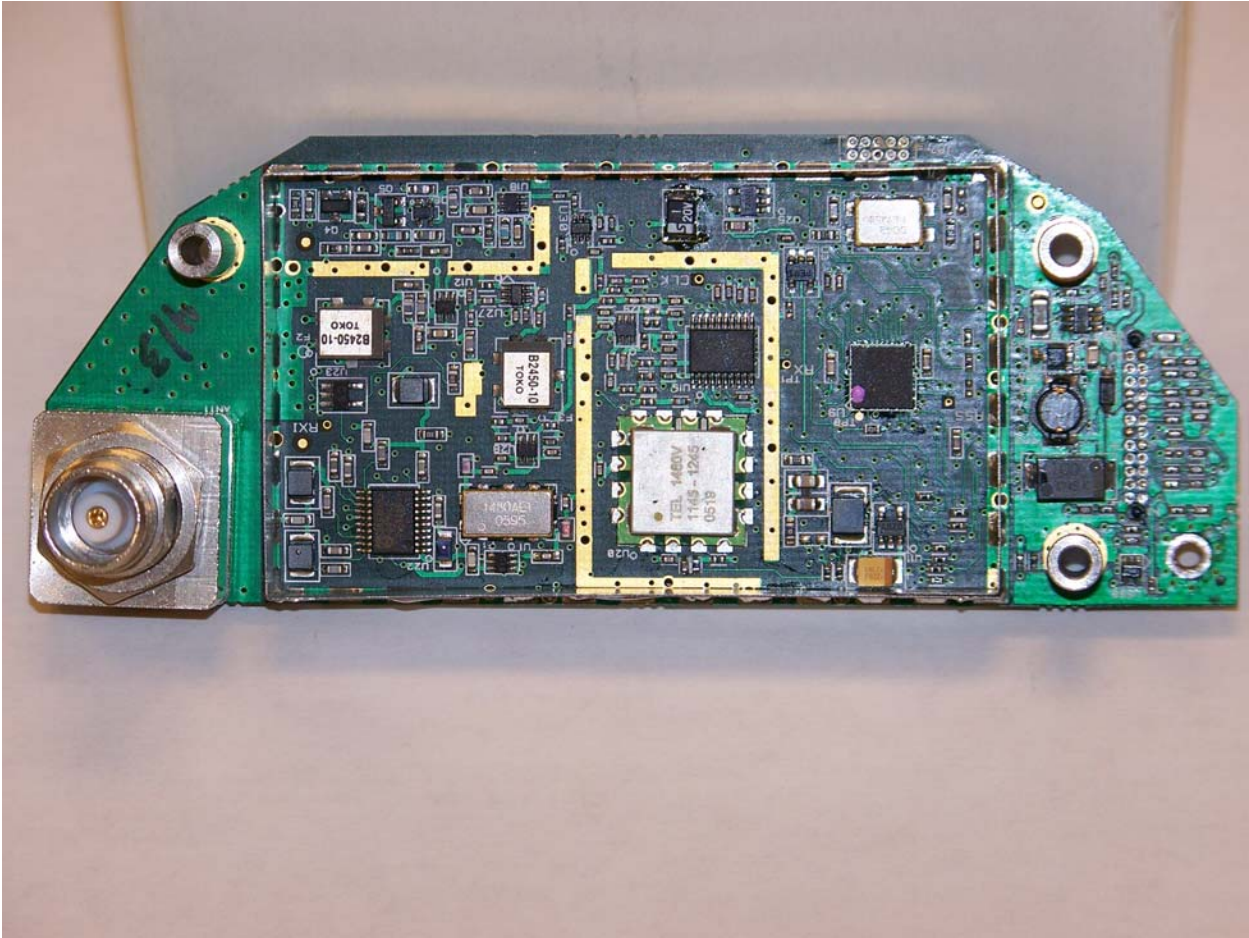


Photo 4. Bottom of EUT, Cover Off

