

Figure 3
Cover Opened

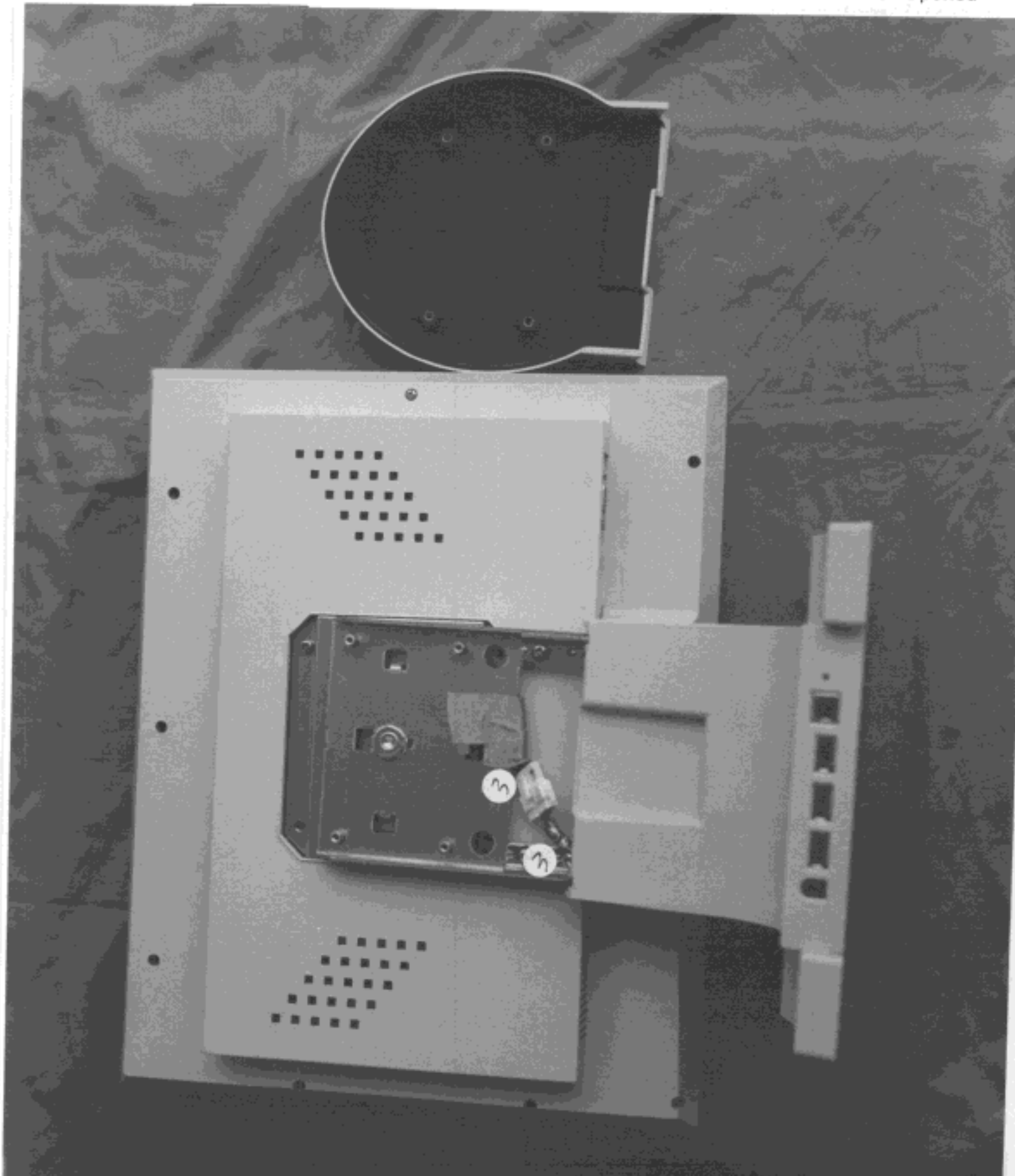


Figure 4
Cover Opened

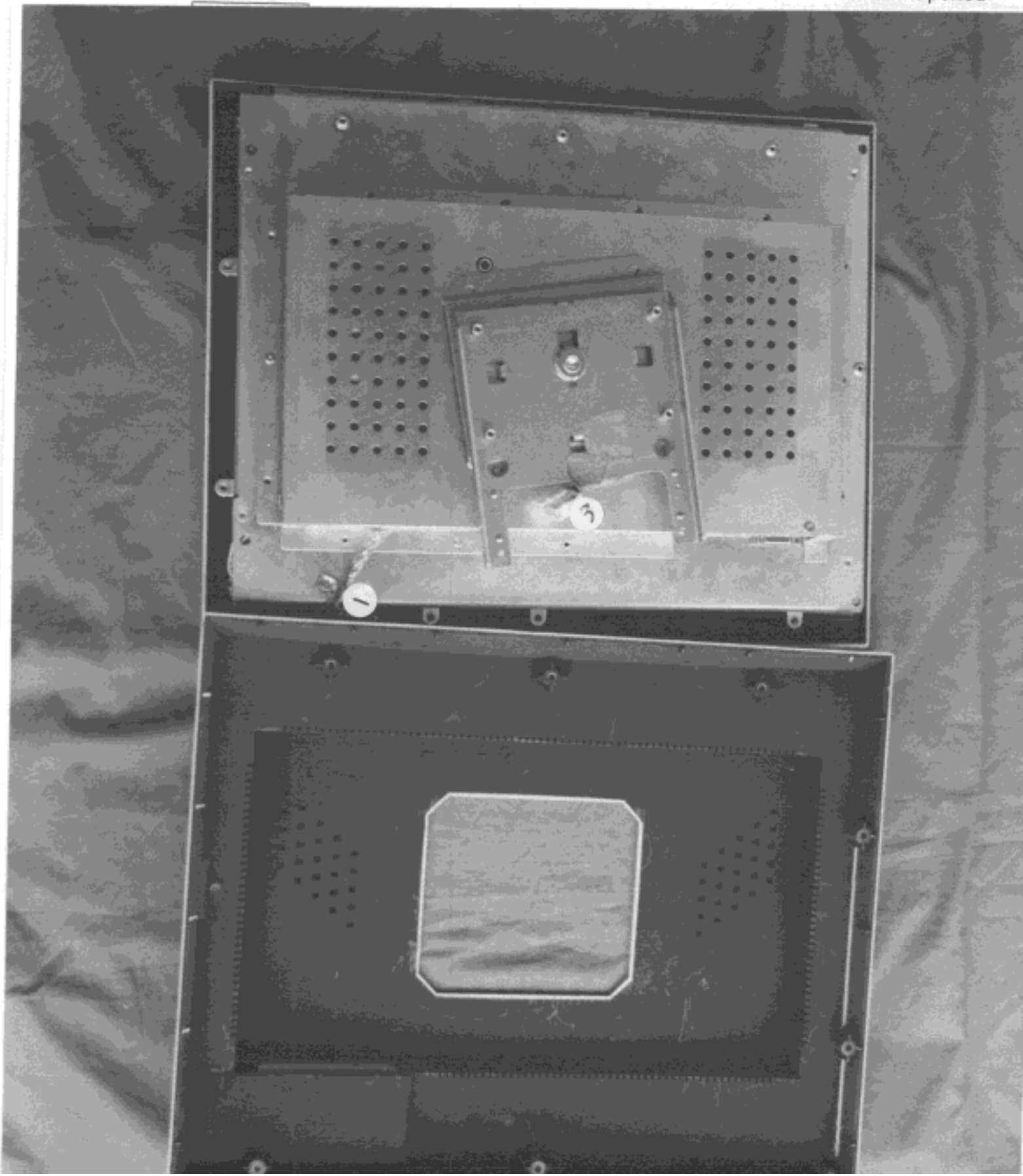


Figure 5
Inside View

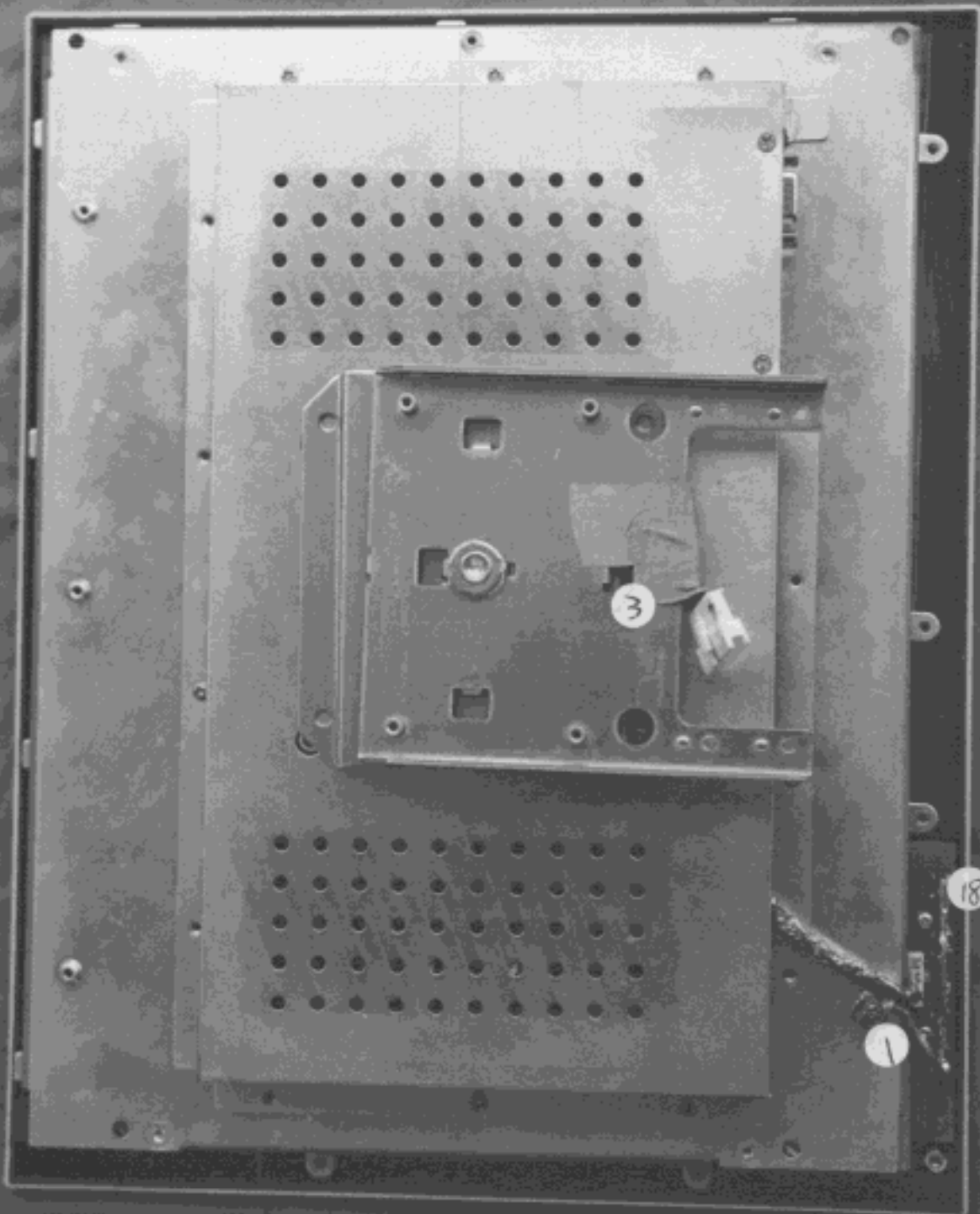


Figure 6
Inside View

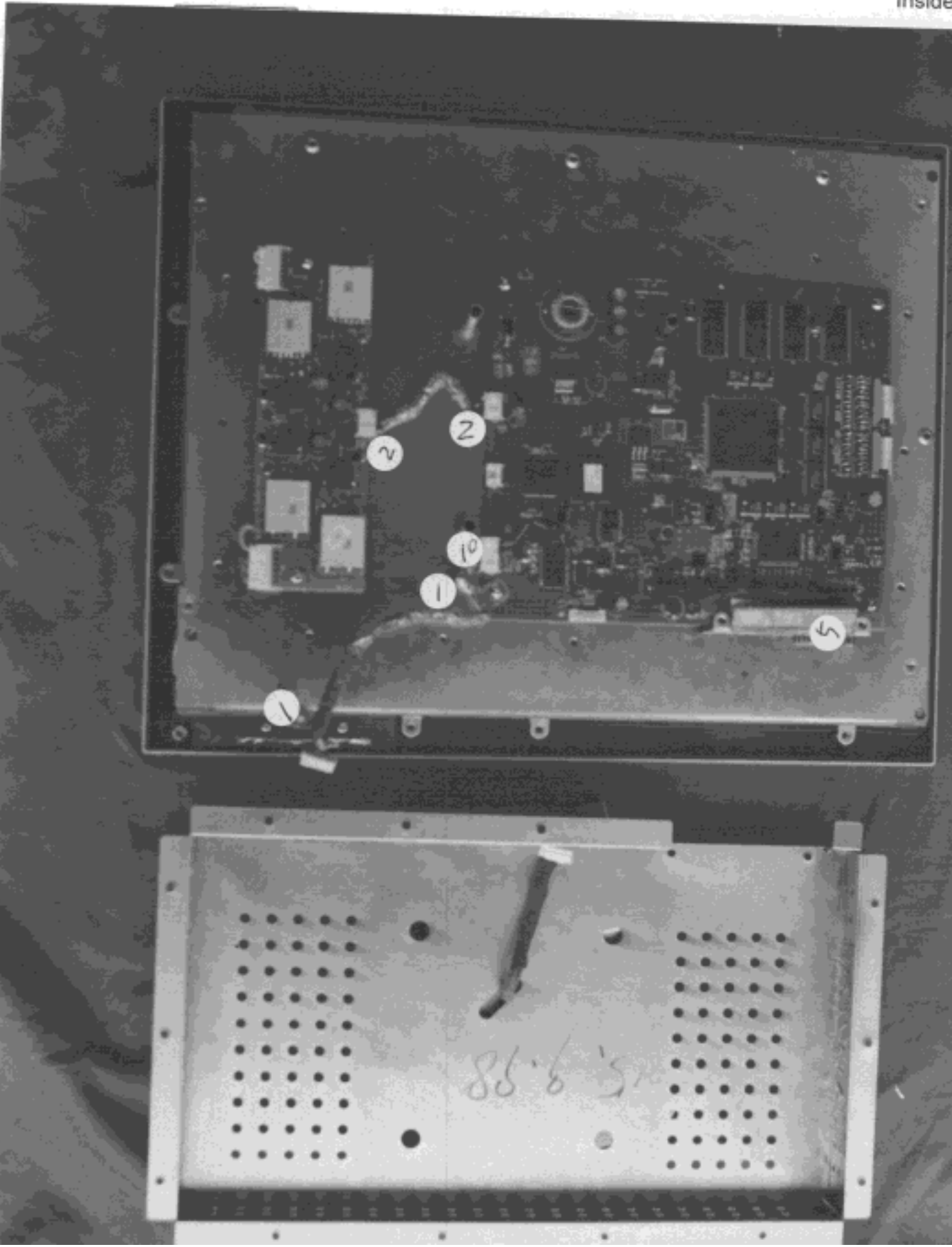


Figure 7
Inside View

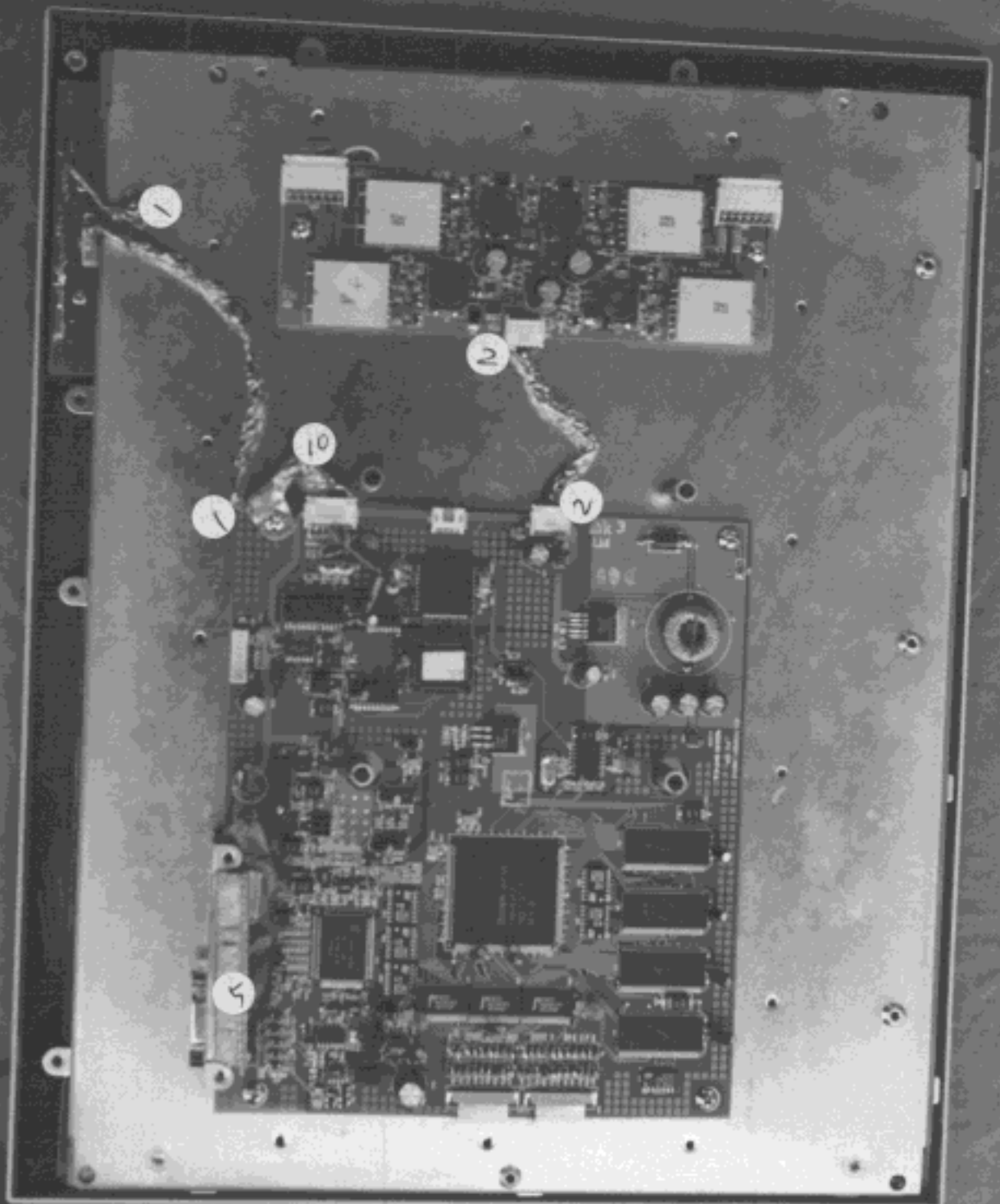


Figure 8
Inside View



Figure 9
Component Side, Control PCB

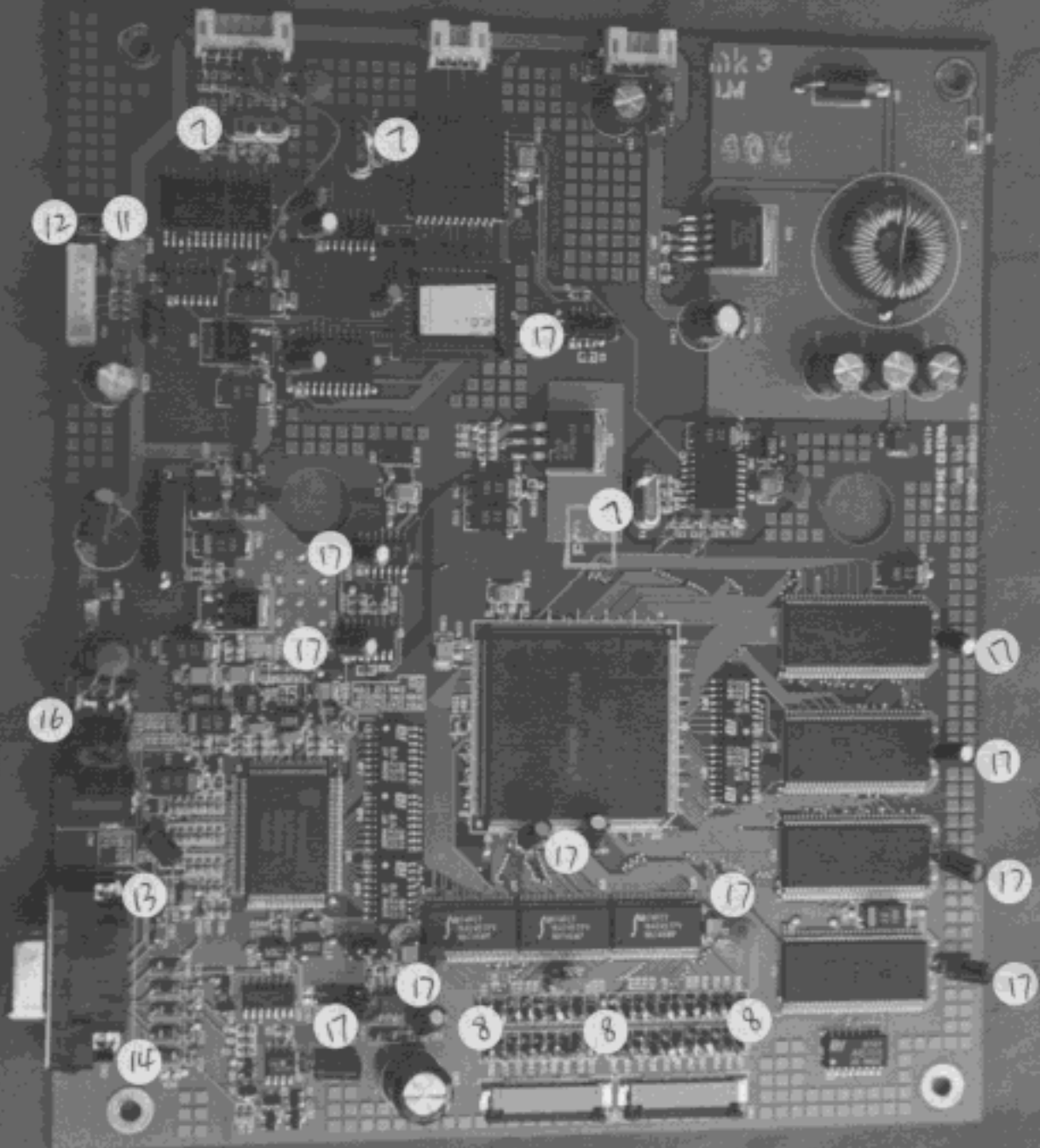


Figure 10
Foil Side, Control PCB

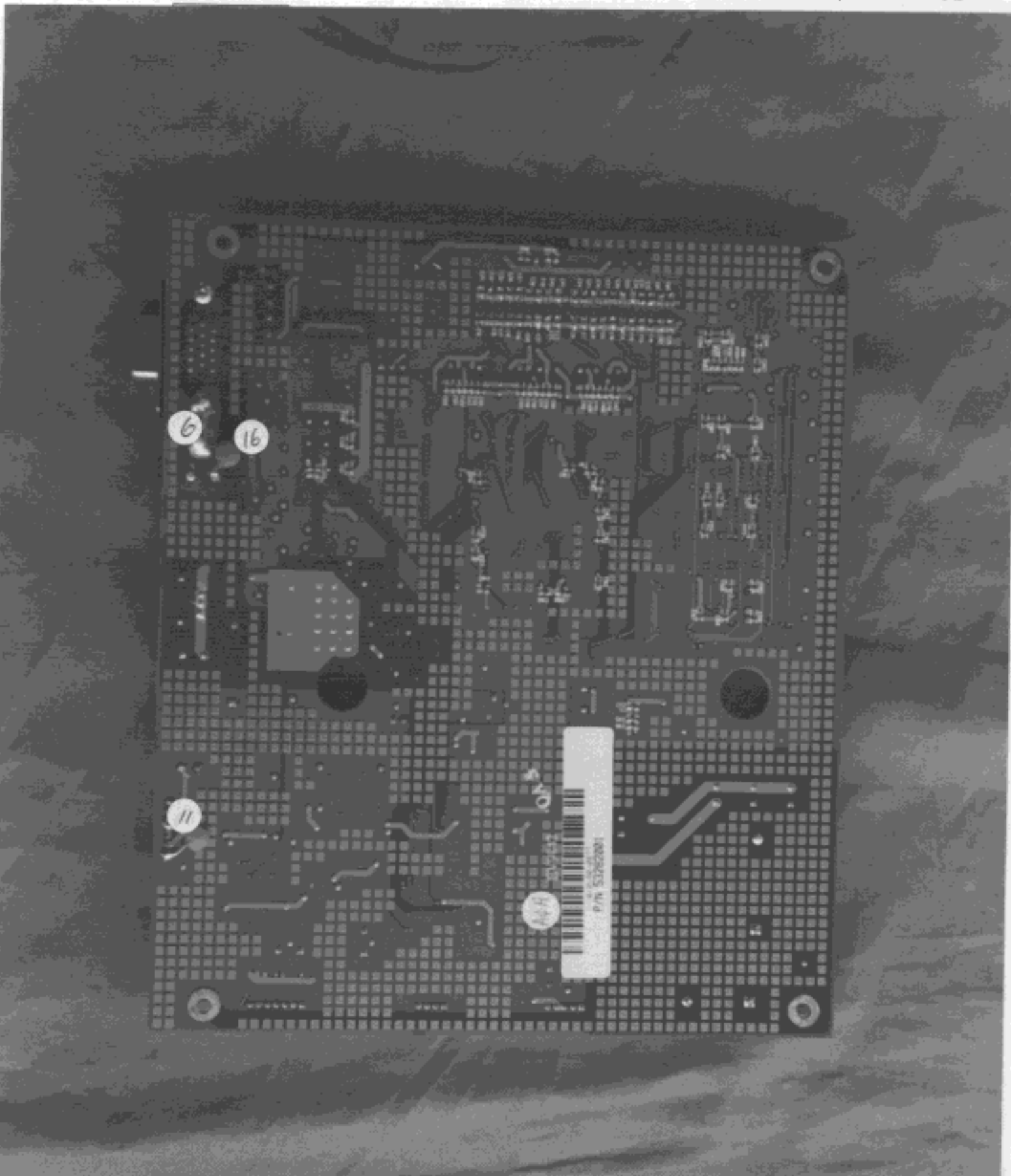


Figure 11
Component Side, Backlight PCB

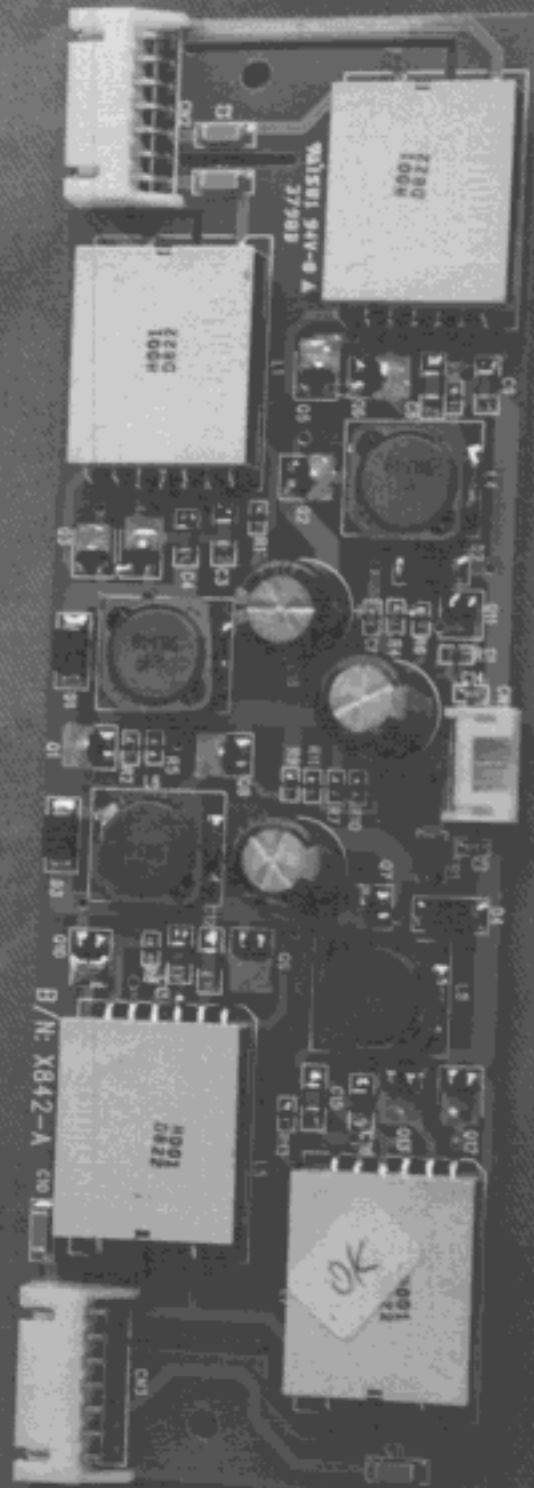


Figure 12
Foil Side, Backlight PCB

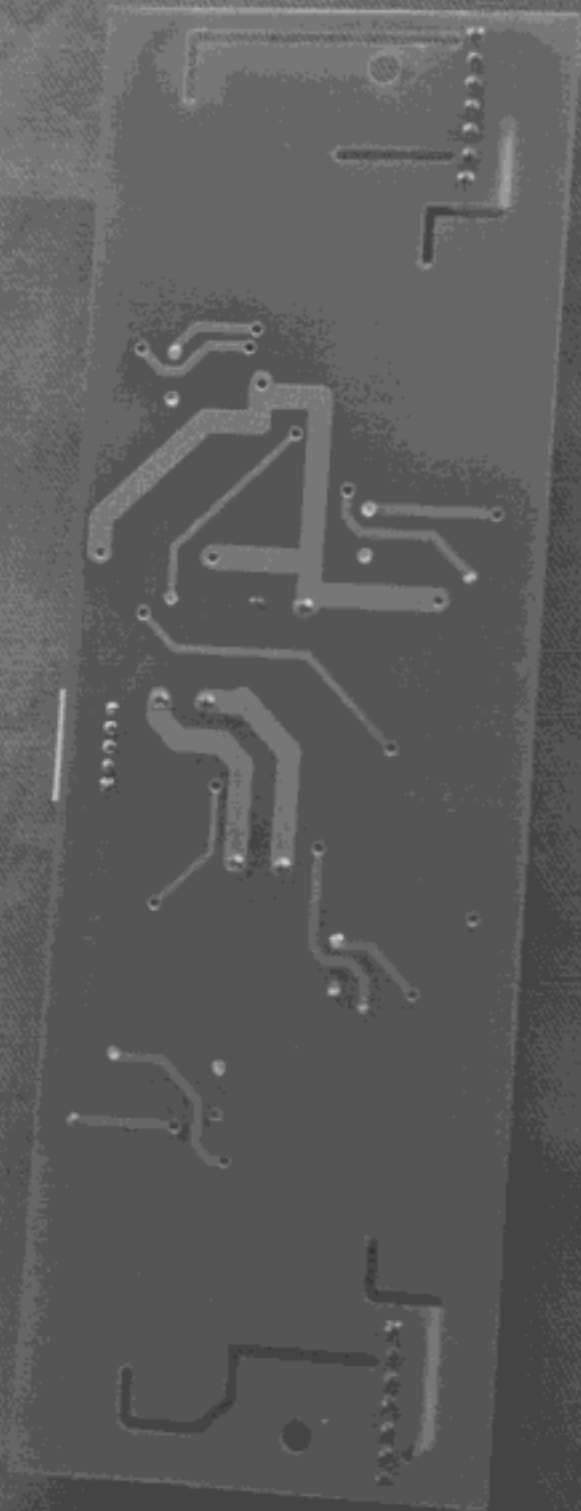


Figure 13
Inside View, USB PCB

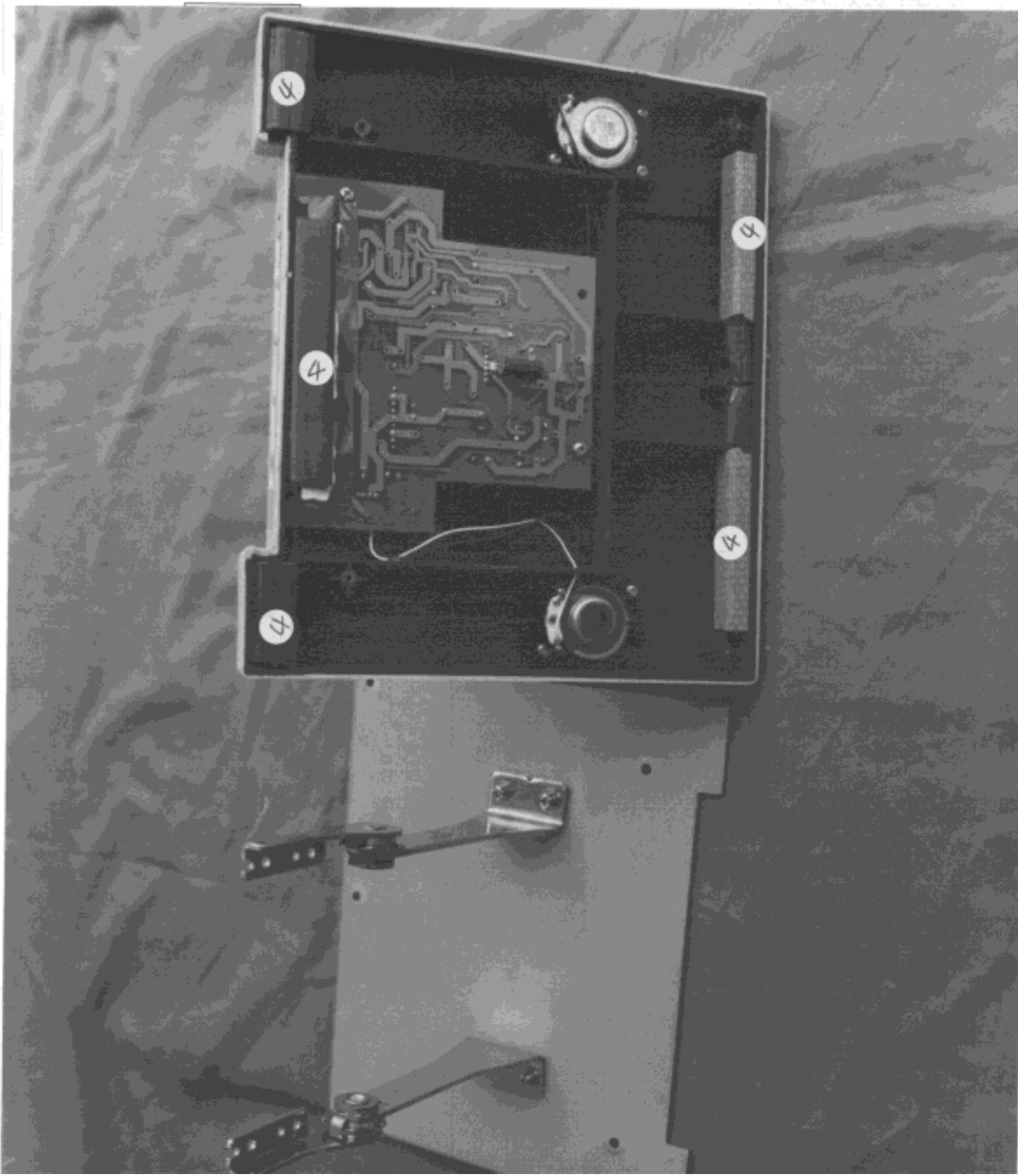


Figure 14
Component Side, USB-Audio PCB



Figure 15
Foil Side, USB-Audio PCB

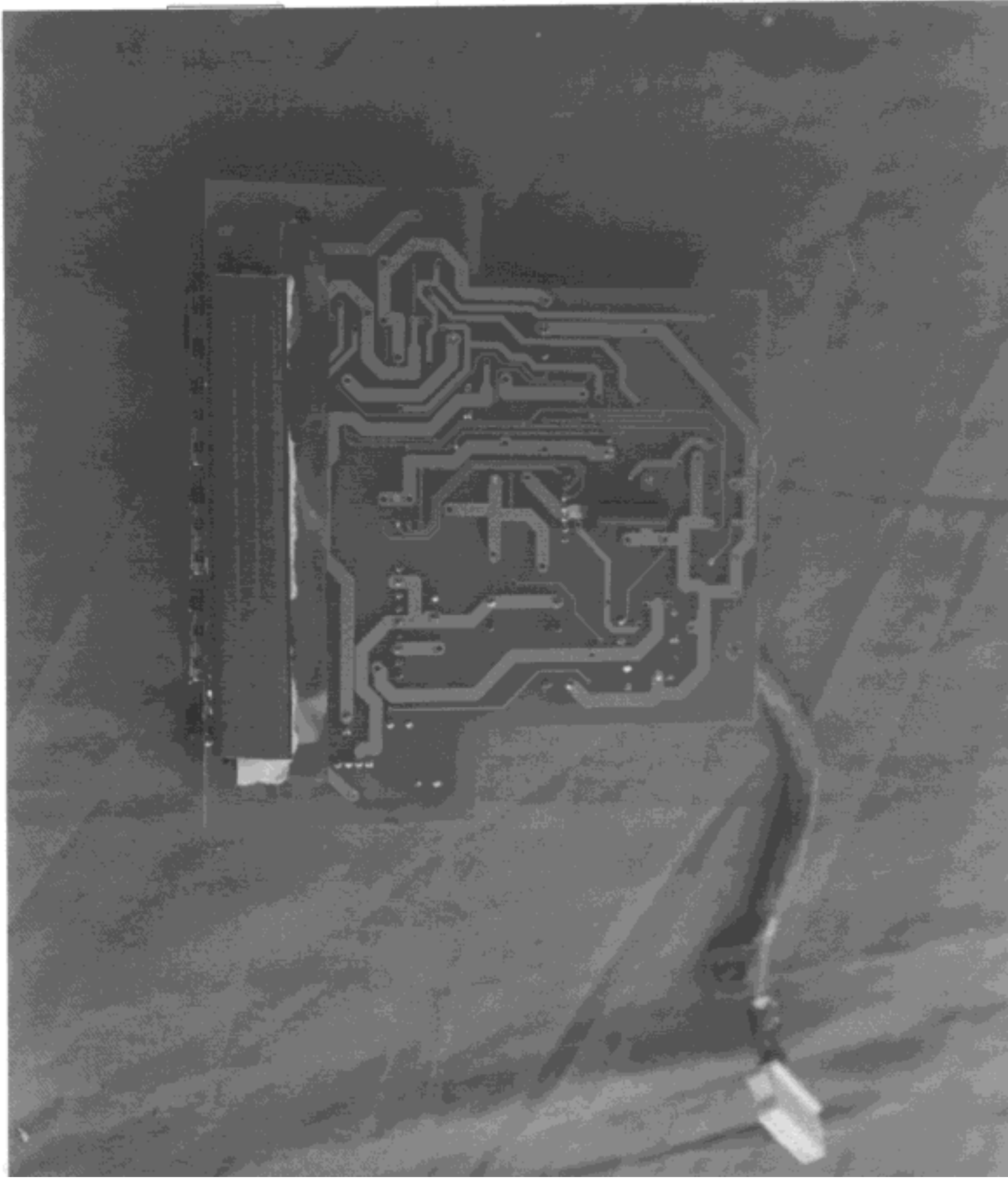


Figure 16
Component Side, Switch PCB



Figure 17
Foil Side, Switch PCB

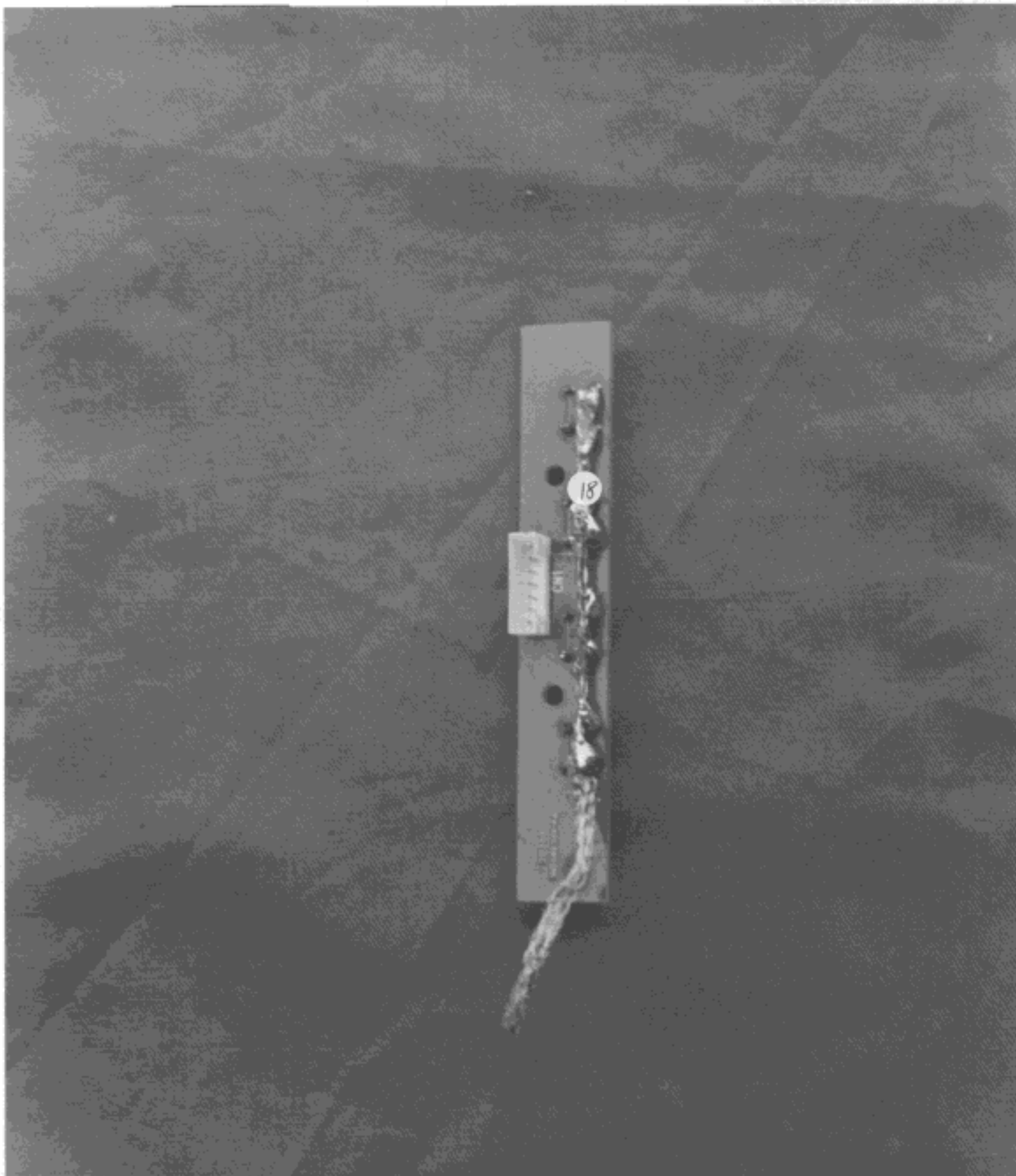


Figure 18
Signal Cable

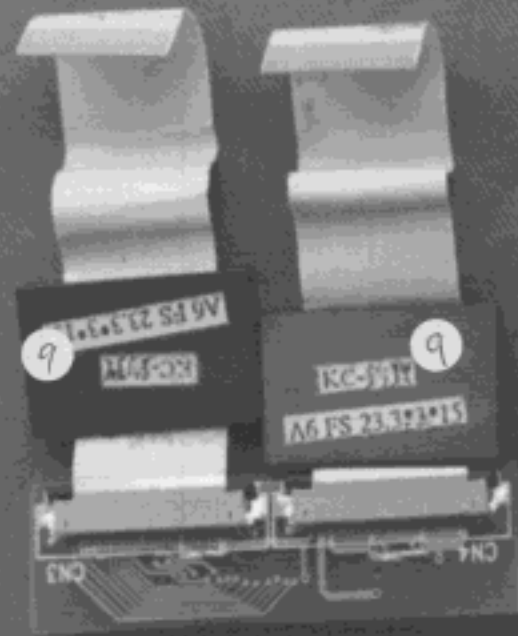


Figure 19
Signal Cable

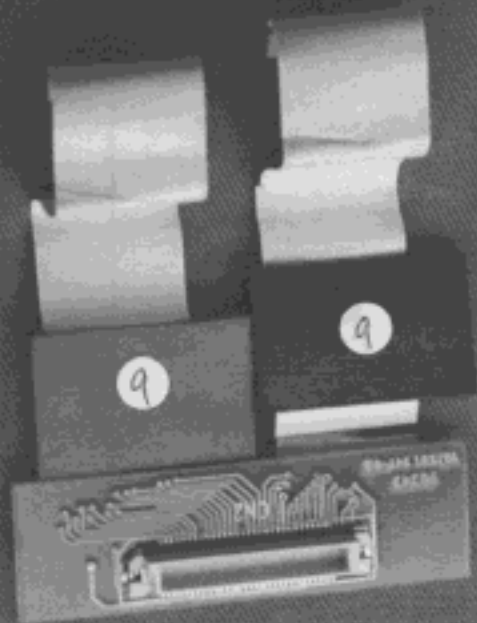


Figure 24
Inside View of AC Adaptor

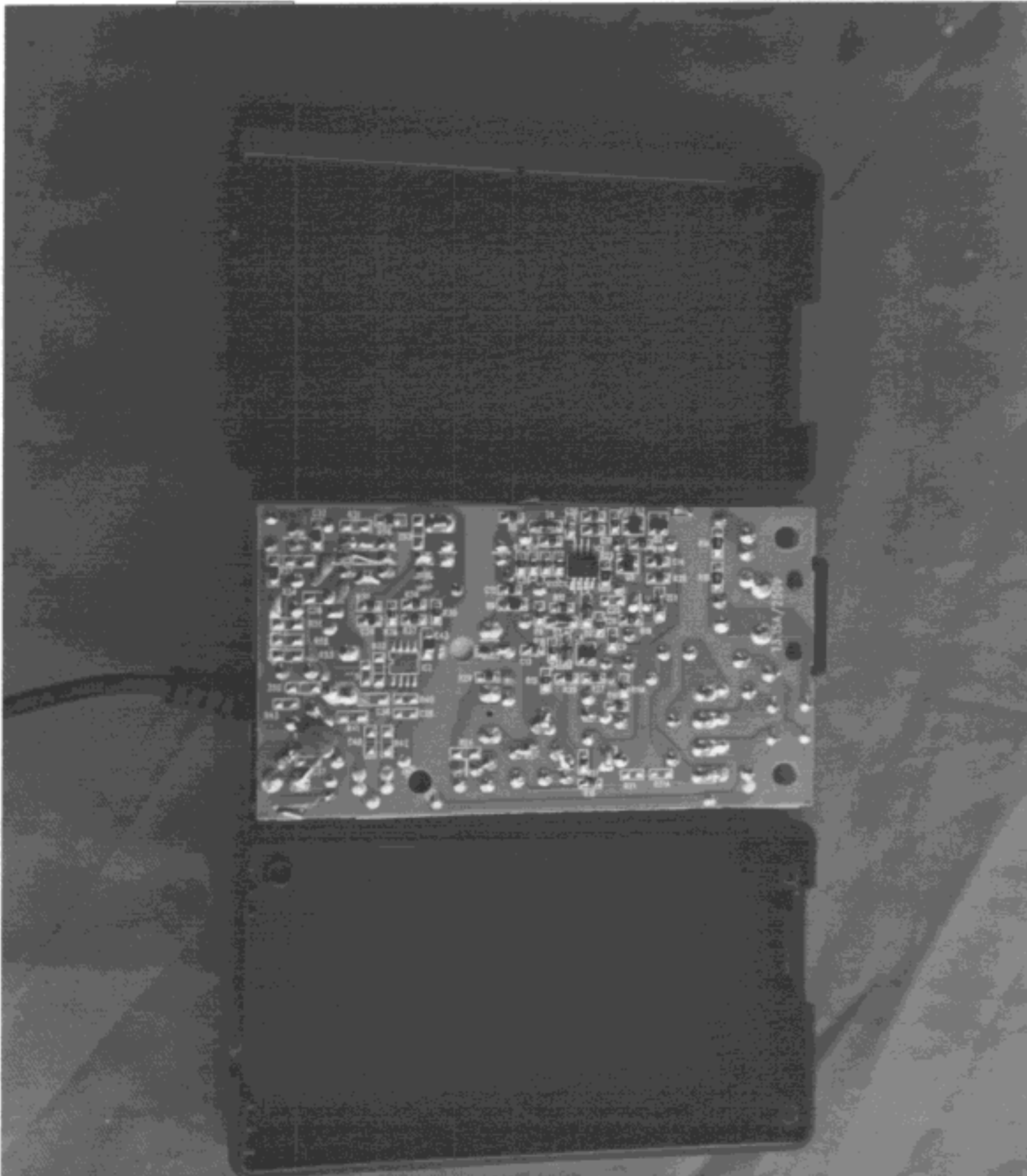


Figure 26
Power Supply Inside View

