

**FCC/MELLOW**

**DEC 28 1998**

**EXHIBIT 5**

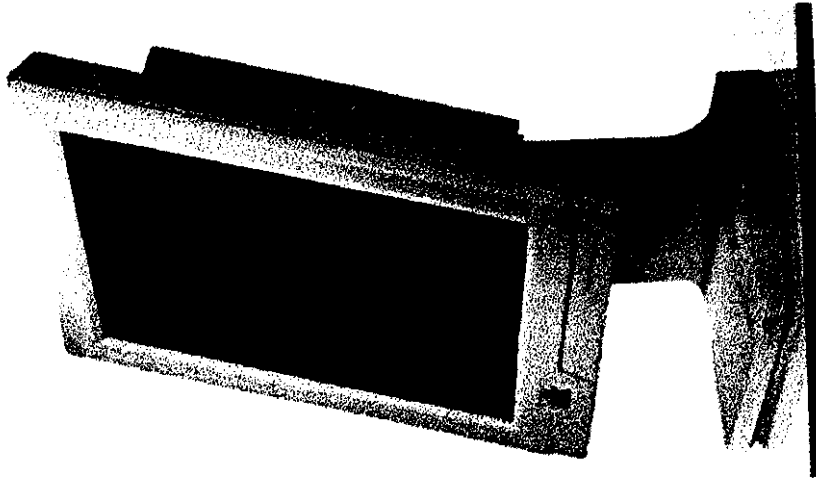
*User's Manual*

*User's Manual*

CD: J4K1098GES615

**PRIVATE &  
CONFIDENTIAL**

# PUREVIEW P615U



Preliminary Issue  
October 1998  
CONFIDENTIAL

FOR PROTOTYPE / EVALUATION ONLY

## PureView P615U

### *Who should use this manual...*

This manual is written to guide you without any prior technical knowledge in setting up the PureView P615U Superslim LCD Monitor. Useful graphics included in this manual will help illustrate several tasks.

GES Part No: 54300241

GES Singapore Pte Ltd  
28 Marsiling Lane  
Singapore 739152  
Tel: 7329898  
Fax: 3687671

All Rights Reserved.  
Printed in Singapore.

First Edition - October 1998  
PRELIMINARY COPY

### **NOTICE**

Our company may make improvements and/or changes in the product(s) described in this publication at any time without notice. Changes are made periodically to the information herein, these changes will be incorporated in new editions of the publication. This publication may include technical inaccuracies or typographical errors.

### **TRADEMARKS**

All registered trademarks are the property of their respective owners.

# CONTENTS

## Information

Equipment has been tested and is compliant with limits for a Class B device, pursuant to Part 15 of FCC Rules. These limits are designed to provide reasonable protection against harmful interference when the equipment is operated in a residential installation. This equipment generates, and can radiate radio frequency energy and, if not installed and used in accordance with the instruction manual, may cause harmful interference to radio communications. However, there is no guarantee that interference will not occur in a particular installation. If this equipment does cause interference to radio or television reception, which can be determined by turning the equipment off and on, the user is encouraged to try to correct the interference by one or more of the following measures:

- Reorient or relocate the receiving antenna.
- Increase the separation between the equipment and the receiver.
- Connect the equipment into an outlet on a circuit different from that to which the receiver is located.
- Consult the dealer or an experienced radio/TV technician for help.

Installation of this equipment in a residential area is likely to cause harmful interference in which case the user will be required to correct the interference at his own expense. Any changes or modifications not expressly approved by the manufacturer could void the user's authority to operate the equipment.

Model ID: JUK1098GES615

## Certification

This device complies with the requirements of the EEC directive 89/336/EEC with regard to "Electromagnetic compatibility."

**Caution:** To assure continued compliance, (example use only) shielded interface cables when connecting to computer or peripheral devices). Any changes or modifications not expressly approved by the manufacturer responsible for compliance could void the user's authority to operate this equipment.

<b>Chapter 1</b>	
Introduction.....	1
<b>Chapter 2</b>	
PureView P615U's features.....	2
Button Assignments.....	5
<b>Chapter 3</b>	
Getting started.....	6
Check List.....	6
Power and VGA Connection.....	7
Connecting the Audio Cable.....	8
Connecting the USB Cable.....	9
Power On.....	10
Adjusting the Angle of PureView P615U.....	11
<b>Chapter 4</b>	
OSD Control Function.....	13
Basic Adjustment.....	13
Brightness.....	14
Contrast.....	14
Phase.....	14
Default Settings.....	14
Image Position.....	15
Horizontal Position.....	15
Horizontal Size.....	15
Vertical Position.....	15
Expand Centre.....	16
System.....	16
Language.....	16
OSD Position.....	17
OSD Turn Off Time.....	17
Auto Adjust.....	17

**Chapter 7**

- Specifications ..... 33
- Display ..... 33
- Monitor ..... 33
- Viewing Angle ..... 33
- User Controls ..... 33
- Power Supply ..... 34
- Power Consumption ..... 34
- Input Signal ..... 34
- Output Signal ..... 34
- Power Management ..... 34
- Features ..... 35
- Dimensions ..... 35
- Power Management System ..... 36
- Connectors ..... 36

**Warning**

**Troubleshooting**

**For your records**

The serial number of this product is on the backpanel of the PureView P615U LCD monitor. Write the serial number in the space below and keep this guide as a permanent record of your purchase to aid in identification in the event of theft or loss.

**Model Name:** PureView  
**Model Number:** P615U  
**Serial Number:**  
**Purchase Date:**  
**Warranty Card Number:**

**Chapter 5**

- Using the PureView P615U USB Hub ..... 18
- Checking Your USB Hub Settings ..... 19
- Using the USB Hub ..... 21
- Checking if the USB Audio Device has been detected ..... 22
- Using the USB Speakers for the First Time ..... 23
- Audio Settings ..... 24

**Chapter 6**

- Using WinPortrait ..... 25
- Using WinPortrait Plug-In Installation Information ..... 26
- Rotating the screen image ..... 27
- Using WinPortrait Display Properties ..... 28
- Using WinPortrait ..... 28
- Using WinPortrait ..... 28
- Using WinPortrait ..... 30
- Using WinPortrait ..... 31
- Using WinPortrait ..... 31

## CHAPTER 1 INTRODUCTION

Welcome to the era of compact and space saving equipment. The high-tech styling and impossibly thin case of the PureView P615U LCD monitor makes a marvellous peripheral addition to your computer. It is super slim, compact and can be used like normal colour CRT monitor. As this LCD monitor uses less than 30% of the normal space required by conventional CRT monitors, it increases your workspace tremendously.

Virtually no radiation emissions and extremely low power consumption makes the PureView P615U LCD colour monitor an ideal for any desktop. PureView's unique design stands apart from all current systems. The flat screen and greater diagonal viewable image lets you fit more screen in less space. A perfect monitor for environments where space restrictions are a consideration.

The slim-panel, active matrix monitors produce sharp, high contrast, brilliant colour and distortion-free images. For a monitor this slim, its performance is both impressive as well as outstanding. PureView has an XGA (1024x768) resolution. It is tailored specifically for everyday home and office applications.

A simple and elegant case provides the optimum viewing position. With a forward or backward tilt, the angle of viewing can be adjusted to provide the user with an ideal viewing posture. User controls for the OSD (On Screen Display) are placed in an easily reachable level at the bottom right of the screen.

## CHAPTER 2 PureView P615U's FEATURES

1. **High quality SUPER TFT LCD panel**  
The 15-inch LCD panel offers the equivalent viewable area of a 17-inch CRT.
  - Radiation free screen, providing high resolution and high contrast.
  - Not susceptible to external magnetic interferences that causes colour impurity.
  - Provides sharp and flicker-free images.
  - Ultra-wide viewing angle (80° left, 80° right, 80° up, 80° down).
2. **Environmentally-friendly**  
The display power consumption can be suppressed by using this unit in combination with a computer that conforms to the VESA DPMS (Video Electronics Standards Association Display Power Management Signaling) standards. This product conforms to the Energy Star program, thus reducing energy consumption when PureView P615U is not in use.  
Therefore, due to the high technology of the LCD used, its power consumption is at an extremely low level (less than 35W) compared to other conventional CRT monitors (at ~190W) in the market.
3. **Plug and Play compatibility**  
PureView P615U does not require any special graphic cards or software. You can use it with any PC or notebook.
  - Includes built-in speakers and a Universal Serial Bus (USB) hub with 3 USB ports.
  - Just plug a monitor cable directly to the back of PureView P615U, connect it to your PC and you are ready to go.

**Digital adjustment using the On-Screen Display**

Adjustments can be performed easily with 3 control buttons ("Select", "▽" or "△" and the On-Screen Display (OSD) menu. PureView P615U provides a *Auto Adjust* feature in which any display adjustments will be set for you automatically according to the resolution that you have chosen. This user friendly function saves your time and effort and provides you with optimum results.

**Ergonomically designed**

The PureView P615U screen can be rotated between the landscape and portrait orientation. An optional software (WinPortrait®) must be used to rotate your viewing screen between the landscape and portrait orientation of your viewing screen. The PureView P615U LCD monitor provides good viewing posture with easily adjustable angles for superior viewing.

**No Interference**

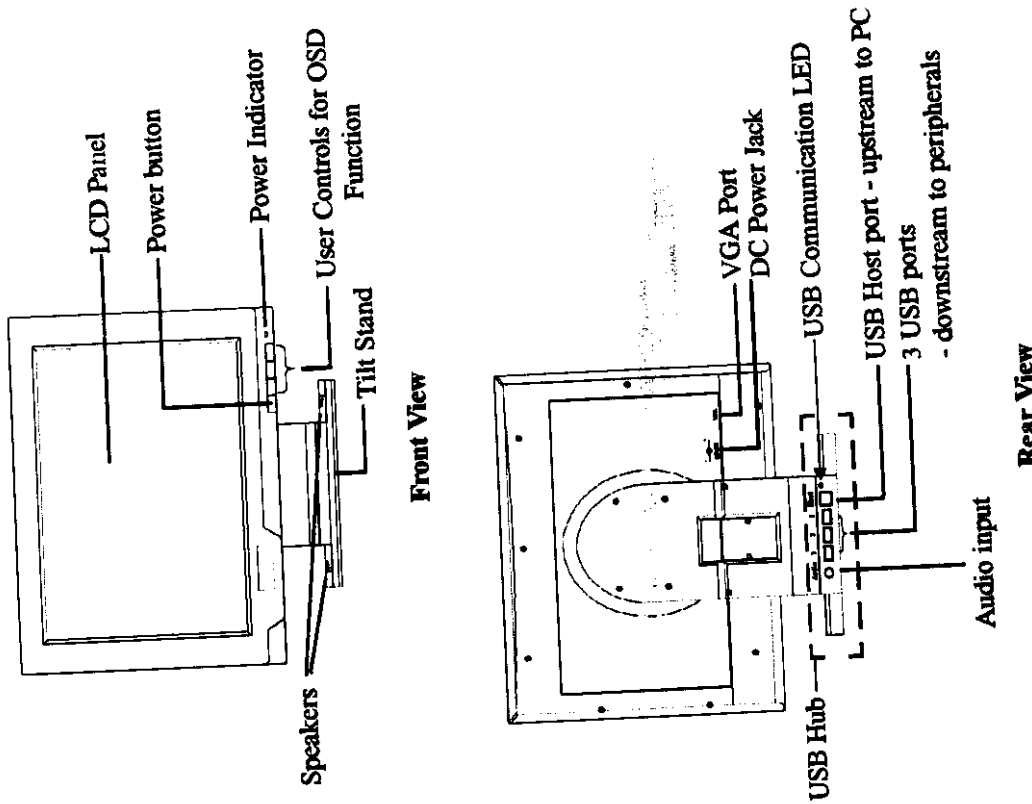
This monitor is isolated from any external interference caused by external magnetic sources. Degaussing is not necessary as there will not be any irregularities resulting from these magnetic sources. There is also no static build up and so it does not attract dust.

**Thin and Lightweight**

The PureView P615U LCD screen is only 37.5mm thick and comparatively lightweight (the average device weighs about 5.5kg, compared to about 25kg for a typical 17-inch CRT). This LCD monitor provides superior image quality in a small footprint.

**Note:**

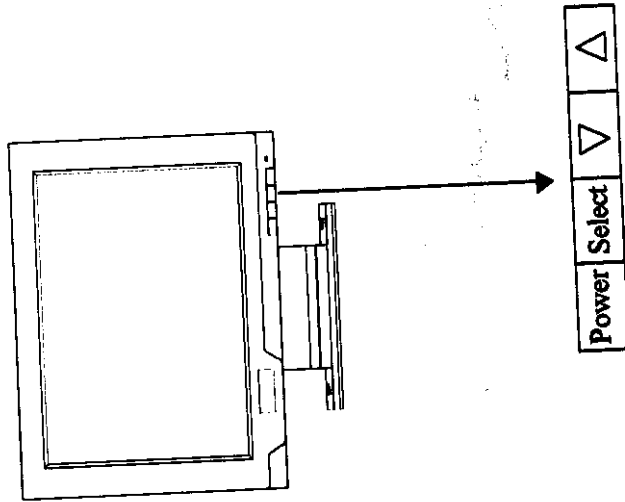
PureView P615U is essentially a green monitor. It conforms to the Energy Star program and more importantly, it does not emit any harmful radiation. The power consumption of this product is also exceptionally low.



**Figure 1 PureView P615U's features**

### Function Assignments

The Power and OSD function keys are conveniently located at the bottom right of the LCD screen. There are 3 OSD functions keys for the digital adjustments of the screen display.



Key	Function
Power	LCD Monitor ON/OFF button
Select	Select Button
▽	To decrease the setting or move left
△	To increase the setting or move right

## CHAPTER 3 GETTING STARTED

### Check List

First of all, make sure everything you bought is in front of you. There are several cables that come with PureView P615U and as a new user, it may be quite confusing. Therefore, to make sure you have everything, let's go through a list of things you should find packaged together with PureView P615U.



Figure 2 What you should have

1. PureView P615U
2. Power Adapter
3. Audio Cable
4. VGA Cable
5. Power Cable with 2 pin adapter plug
6. USB Cable
7. WinPortrait Software CD (optional)

### 2. Connecting the Audio Cable

If you want speakers of PureView P615U to output any sound or music coming from your computer, you will first have to connect the audio cable from PureView P615U to your computer's sound card "line out" socket.

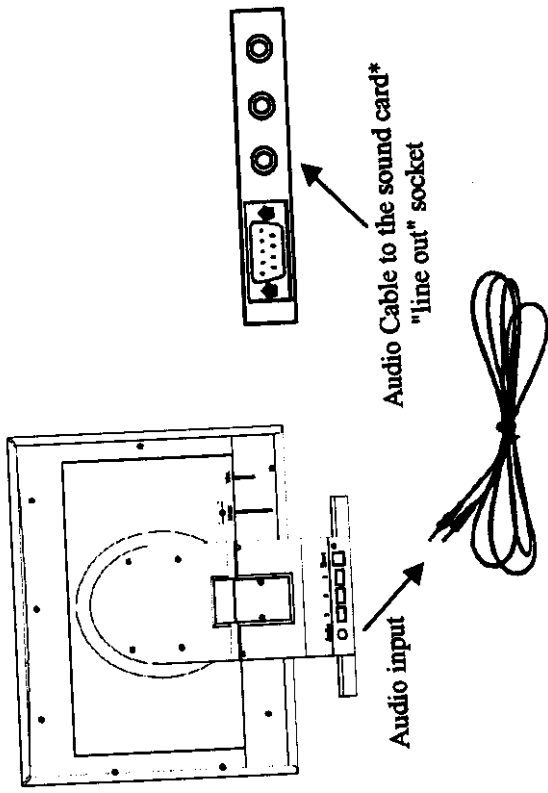


Figure 4 Audio cable connection

\* Your sound card configuration may differ from the one shown.

### Power and VGA Cable Connection

Insert the power adapter to the DC Power Jack at the rear of PureView P615U and the other end to the power cable which is then inserted into the wall socket. Connect the monitor and your host computer with the VGA cable.

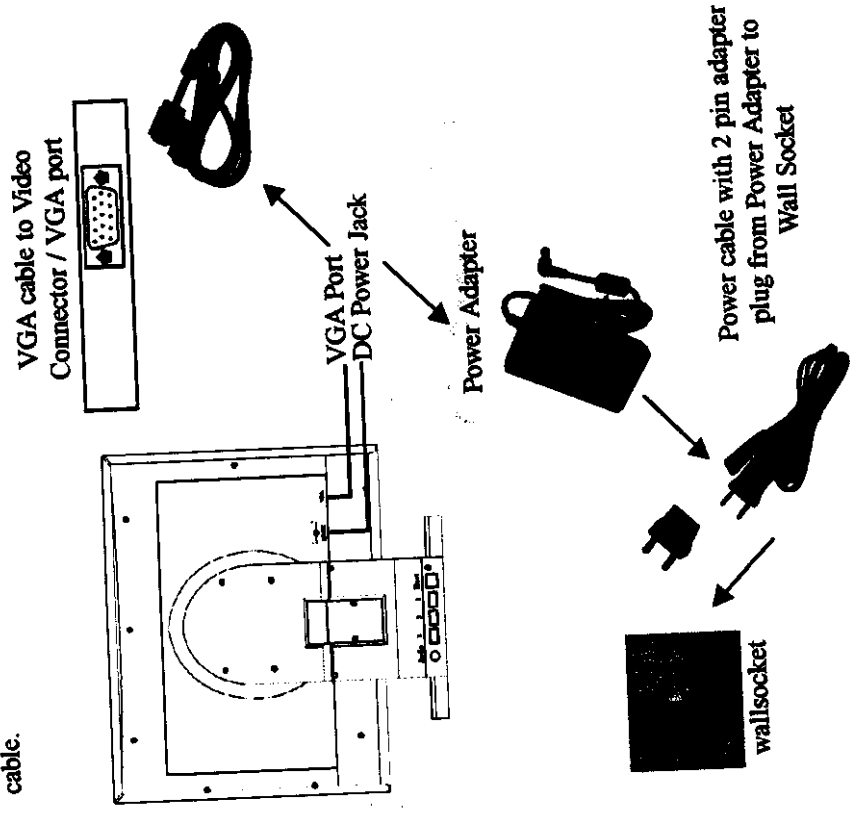


Figure 3 Power and VGA Cable Connection



**More info:**  
 Universal Serial Bus (USB) is a peripheral bus that brings files and play capability to computer peripherals outside the box, eliminating the need to install cards into dedicated computer slots and re-configure the system.

Personal computers equipped with USB and with Windows 98 allow computer peripherals to be automatically configured as soon as they are physically attached, without the need to reboot or run setup. USB also allows multiple devices. It can support up to 127 devices to run simultaneously on a computer, with peripherals such as monitors and keyboards acting as additional plug-in sites, or hubs.

#### 4. Power On

To switch on the monitor, switch on the main power at the wall socket and PureView P615U will be powered up automatically. The auto-power on feature only happens the first time you switch on PureView P615U after connecting it to the wall socket. At other times, press the power button found at the lower right of the screen.

As soon as you switch on PureView P615U, the Power Indicator will be lighted. If all connections have been done, your computer display will appear on the screen.

#### Connecting the USB Cable (Optional)

One end of the USB cable should be connected to the USB Hub "Host" socket found at the rear of PureView P615U and the other end should be connected to your computer.

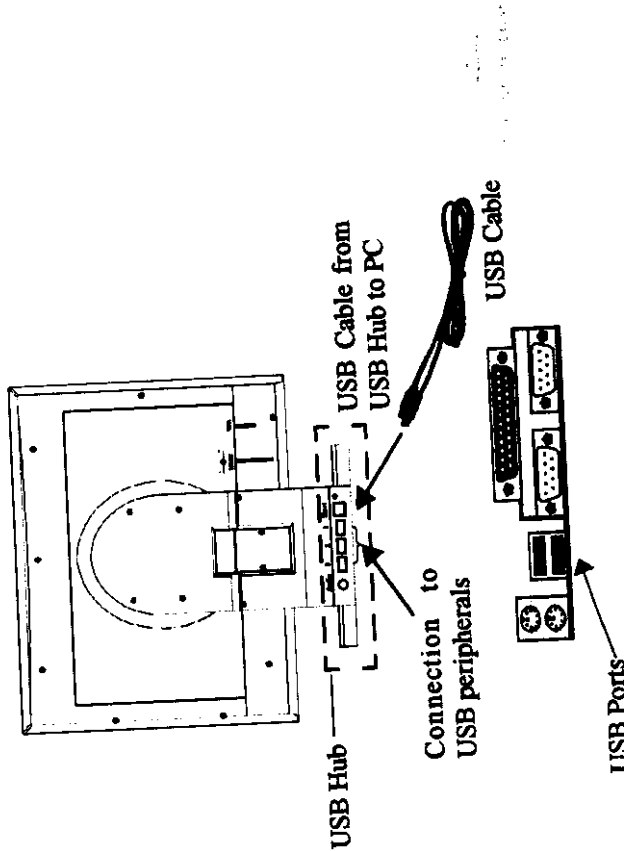


Figure 5 USB cable connection

**Note:**  
 When Windows 98 is used and the USB cable is connected to your computer, the default setting is to use USB Audio settings. That is, you do not need to connect the audio cable to the sound card as audio data is transmitted to the USB DAC through the USB Hub. You may want to refer to Page 20 for more information about using the USB Audio functions.

PureView P615U provides a built-in USB Digital to Analog Converter (DAC) which provides the function of a sound card. PureView P615U also offers an internal power amplifier that outputs digital clear sound.

### Adjusting the Angle of Pure View P615U

With PureView P615U, the screen can be rotated between landscape and portrait orientation. The optional WinPortrait software with PureView P615U allows you to switch the screen orientation. Follow instructions below to rotate your LCD monitor to your choice of orientation.

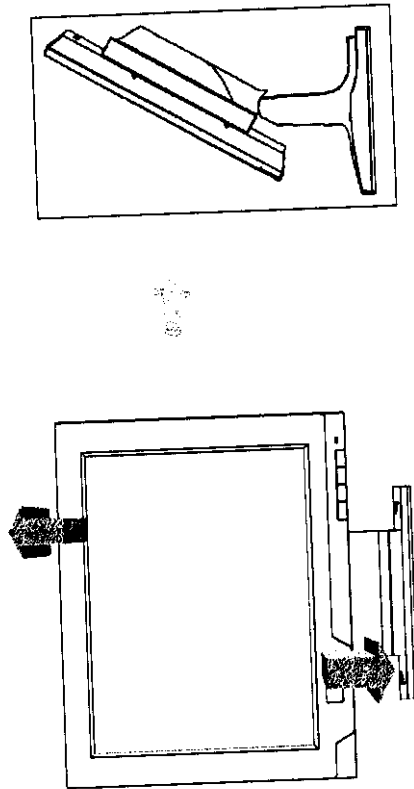


Figure 6 Adjustment of screen - Tilting the screen

1. Hold down the base of the LCD monitor and then push the top of the screen to its full tilted angle.

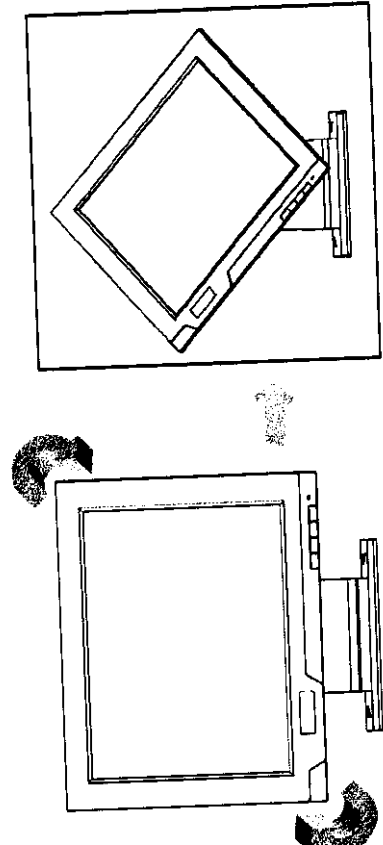


Figure 7 Adjustment of screen - Rotating the screen

2. After tilting the LCD monitor, hold the bottom left and top right of the screen and rotate it to the portrait orientation.

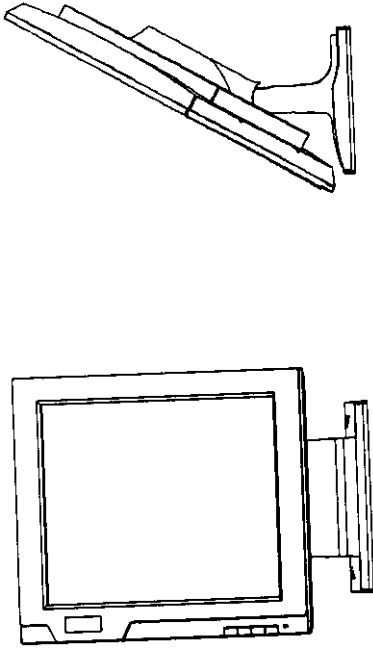


Figure 8 Adjustment of screen - Landscape Orientation

3. Finally, adjust the tilt of Pure View to achieve your ideal viewing angle.

**Brightness**  
 Brightness can be increased or decreased by pressing the up and down buttons respectively. Holding down the up or down button continuously increases or decreases the count in steps of 10.

**Contrast**  
 Contrast can be increased or decreased by pressing on the up and down buttons respectively. Holding down the up or down buttons continuously increases or decreases the count in steps of 10.

**Phase**  
 This function enables you to fine-tune your display. Phase sharpens focus by aligning the illuminated pixels. Press the respective keys until the screen image looks focused, crisp and sharp.

A suggested method of testing out your LCD Monitor display quality would be to start a word processor like Notepad. Type a series of the letter "L" across the screen. If the vertical lines of the letters appear clear and defined, then the display quality is good. However, if it appears to be a bit unclear, you might want to adjust the phase level making sure that the full range of "L"s are clearly displayed.

**Note:**

The Phase setting is also useful when you have changed your VGA card. The display may become unstable and the display may flicker. Adjust the Phase setting to accommodate the new hardware and to adjust your LCD monitor for a good quality display.

The display quality may vary accordingly to different VGA cards. Therefore, it is advisable to change settings to suit you whenever you change any display hardware.

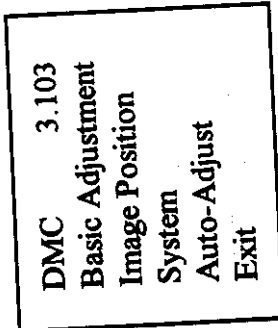
**Default Settings**

Choosing this option will set all selections to the factory default settings.

## CHAPTER 4 OSD CONTROL FUNCTION

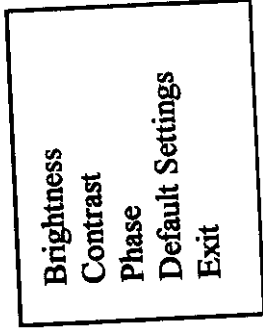
PureView has an On Screen Display (OSD) function, which helps you adjust the display to attain the best visual performance. Use the 3 OSD control buttons "Select", "▽", "△", to select the settings. You may want to use the *Auto Adjust* feature of PureView P615U to obtain optimal viewing results.

To start the OSD setting, press either "Select", "▽" or "△", button once. You should see the following menu on the screen.



You can scroll up or down to your choice using the corresponding buttons. To activate the selection, press "Select" and "Select" again if you want to go back to the main menu at any time. "Exit" saves changes, closes the menu and clears the screen.

*Basic Adjustment*



### Image Position

Horizontal Position  
 Horizontal Size  
 Vertical Position  
 Expand/Center  
 Exit

If necessary, make small adjustments using the Horizontal Position and Horizontal Size until the screen image is completely visible. The black border around the edge of screen should barely touch the illuminated "active area" of the LCD.

#### Horizontal Position

You can adjust the display screen image horizontally to the right or left with the up and down buttons respectively.

#### Horizontal Size

You can increase and decrease the display image size by selecting this option and pressing the up and down buttons.

#### Vertical Position

You can adjust the entire display screen image vertically up and down by pressing the up and down arrow buttons.

#### Expand Centre

This option is only available in text, VGA and SVGA mode. This will change the screen from its default size (smaller than the full screen) to an enlarged full screen size. It will expand the screen to the full screen width for better and easier viewing.

#### Note:

When you are using resolutions smaller than 1024x768, your screen may be unclear. The display may not look as sharp as the recommended setting of 1024 x 768 pixels.

### System

Language  
 OSD Position  
 OSD Turn Off Time  
 Exit  
 1024x768H - 48.5  
 V-60

System menu gives you options to configure the settings of the OSD Menu such as its language, position and the menu turn off time. It also provides an indication of the current mode the display is in.

#### Language

English  
 Francais  
 Italiano  
 Deutsch  
 Espanol  
 Exit

You may change the language of the OSD Menus. There are 4 languages to choose from. English, French, Italian and Dutch.

#### OSD Position

Top Left  
 Top Right  
 Center  
 Bottom Right  
 Exit

This menu gives you 4 position options to place your OSD Menu. It will apply only when you next invoke the OSD function.

**OSD Turn Off Time**

15 sec
30 sec
60 sec
120 sec
Exit

When there has been no activity for a period of time, the OSD Menu will automatically close. You are able to set the Menu closing time, from 15 seconds to 120 seconds since the last OSD menu activity.

**Auto Adjust**

PureView P615U uses the latest LCD technology to produce this new user friendly function. A new user may find adjusting monitor settings a bit of a hassle and thus with this function, it releases the need for the user to adjust any screen settings separately.

To use this function, bring up a fully maximised screen and select *Auto Adjust* from the OSD Main Menu. Wait for about 10 to 15 seconds. PureView P615U will complete the tracking of the display system and the scanning of screen resolutions to provide optimum viewing results.

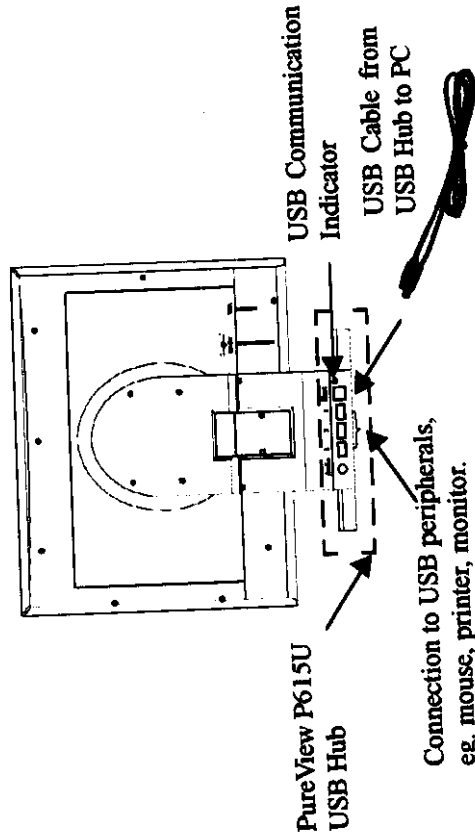
You can further improve the display quality by adjusting the Phase (refer to Page 14).

After you have changed your VGA card, PC or display settings (eg. display resolutions or refresh rate), use the Auto Adjust function again to detect the new settings.

# CHAPTER 5 THE PUREVIEW P615U USB HUB

PureView P615U has a built in Universal Serial Bus (USB) hub and three USB downstream ports in its base. Since USB is a *Plug and Play* connector, all you have to do is plug any USB devices into the PureView P615U USB hub (the base) and use your device.

Windows 98 will automatically detect the USB cable connections from your computer to the LCD monitor and to any peripheral connected through the USB ports.



**Figure 9 The PureView P615U USB Hub**

**Important Note:**

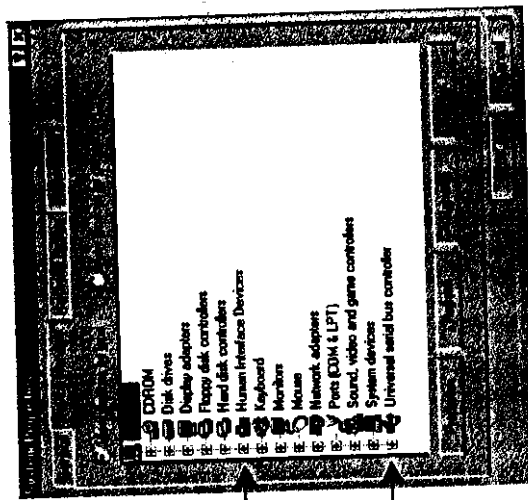
USB functions are available only if you are using Windows 98 and your motherboard comes with USB ports.

When you plug the USB connector into the PureView P615U USB hub, a communication indicator will light up. If it blinks, it means that the communication link to devices has been successfully set up.

### CHECKING YOUR USB HUB SETTINGS

To check if the connections conflict with any other equipment, go to the *Start* button found on the Windows Taskbar and select the following: *Start - Settings - Control Panel* and double click the *System* icon. Select the *Device Manager* tab and a list of devices will be shown (see Figure 10 for the example).

Upon attaching the USB cable to PureView P615U, you will see some changes in your list of devices in *Device Manager*. There will be an addition of the Human Interface Devices and any new USB devices which you attach to the PureView P615U USB hub will be reflected in the list.



Additional Line

Any new USB devices added will be shown under this section.

Figure 10 Changes in list of device in Device Manager

Figure 11 shows what is under the Human Interface Device section of the Device Manager when you connect the USB cable to your computer.

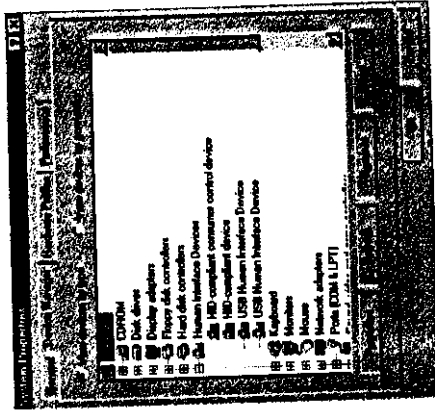


Figure 11 Human Interface Devices

Any additional USB devices you connect to the PureView P615U USB hub will be shown under the Universal Serial Bus Controller list as shown in Figure 12.

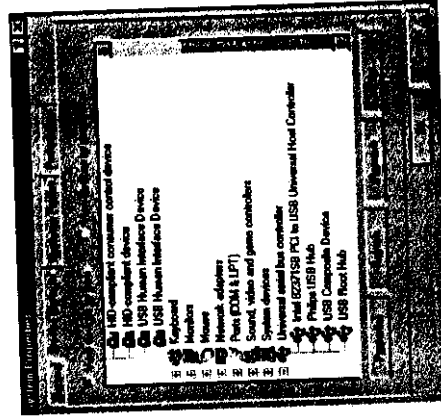


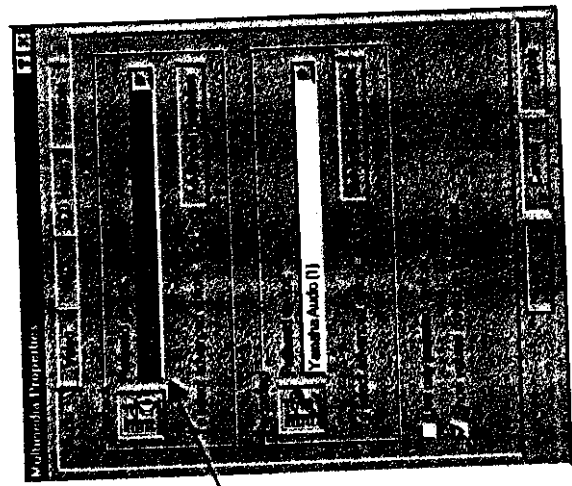
Figure 12 Universal Serial Bus Controller

**Note:**

The list you have may differ from the one shown. The devices shown in this list reflect accordingly to the devices attached to your computer.

Checking if the USB Audio Device has been Detected  
 Go to the Start button found on the Windows Taskbar and select the following: Start - Settings - Control Panel and double click Multimedia icon. Select the Audio tab.

By default the USB Audio Device will be chosen. You should therefore see that the USB Audio Device has been selected under the Preferred device box. Please refer to Figure 14 below.



By default, the USB Audio Device is selected once the USB connection is detected.

Figure 14 USB Audio Device

and Audio  
 Once the USB cable is inserted into the USB hub on the base of PureView P615U, the default setting is to use USB Audio settings. That is, you do not need to connect the audio cable to the sound card as audio data is transmitted to the PureView P615U speakers through the USB port.

- \* You only need to connect either
  - the audio cable to the sound card
  - or
  - the USB cable to the USB hub.

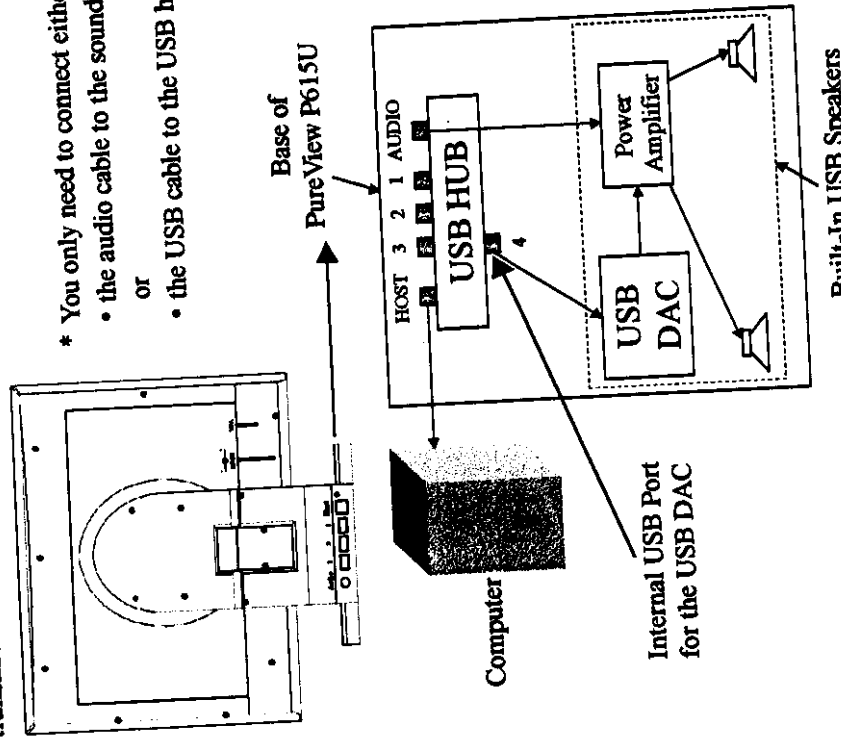


Figure 13 USB Speakers

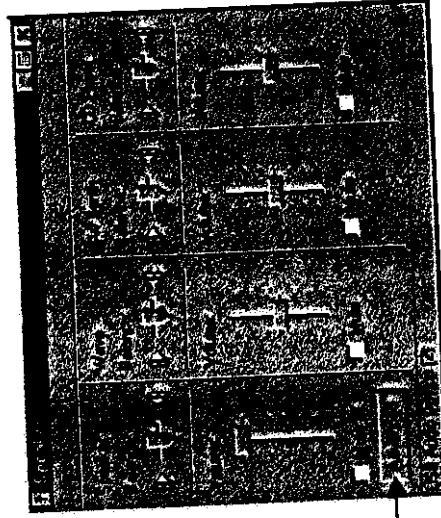
The USB Digital to Analog Converter (DAC) in the built-in USB speakers provides the function of the sound card. Thus, when using the PureView P615U USB speakers, it is not necessary to have a separate sound card. PureView P615U also offers an internal power amplifier that outputs digital clear sound.

**Audio Settings**

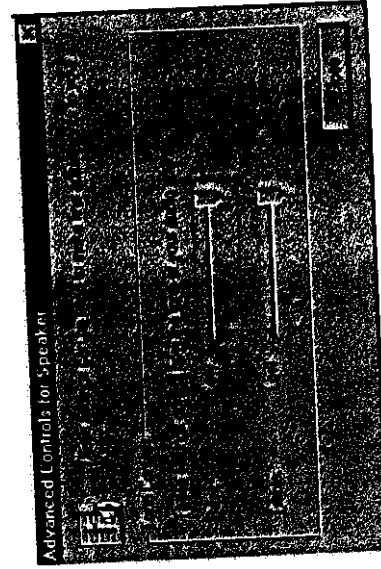
Using the PureView P615U USB speakers allow you to adjust your Volume, Base and Treble settings. The Volume settings will appear when you double click the speaker icon found in your system tray. The Base and Treble settings can be accessed when you click on the *Advanced* button below the speaker volume setting.



Double click this icon to display the speaker settings



Select this to enter the Advanced Control for Speakers. (If you do not have the Advance button, Click Options to go to the Advanced Controls).

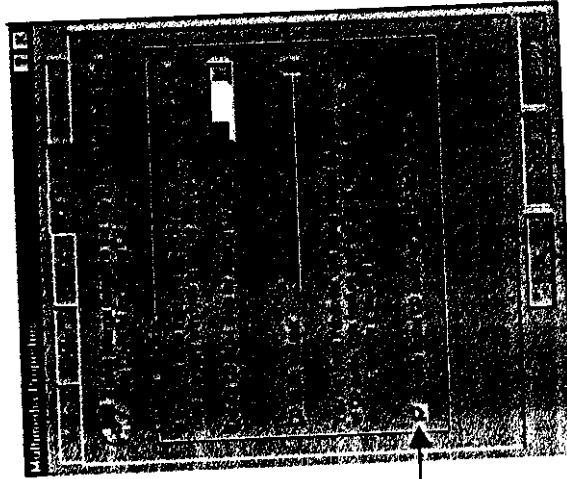


**Figure 16** Volume, Base and Treble Settings

**Using the USB Speakers for the First Time**

You are required to enable the digital CD audio for your CD-ROM. Go to the *Start* button found on the Windows Taskbar and select the following: *Start - Settings - Control Panel* and double click the *Multimedia* icon. Select the *CD Music* tab.

Check the "Enable digital CD audio for this CD-ROM device" box to enable your computer to send audio data from your CD-ROM to the USB hub and not to the sound card.



Check this box to enable CD Audio data to be sent to the PureView P615U USB Hub.

**Figure 15** USB Audio Device



## WinPortrait Plug-In Installation Information

To install WinPortrait:  
WinPortrait Installation Instructions, Windows 95/98

1. Quit all other applications.
2. Make sure your native video drivers are installed before installing WinPortrait software.
3. Insert the Pivot CD-ROM into your CD-ROM drive.
4. Select RUN from the START button on the Taskbar.
5. Type D:\SETUP.EXE (replace D: with the letter of your CD-ROM if necessary).
6. Click INSTALL.

A Blue WinPortrait Monitor Icon (as shown) is located in the system tray on the task bar after you install the WinPortrait software.

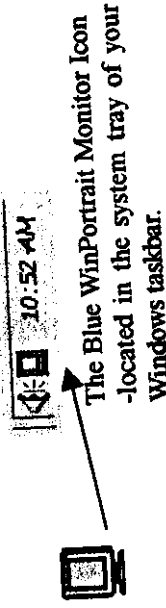


Figure 17 WinPortrait Monitor Icon

## CHAPTER 6 USING WINPORTRAIT

The WinPortrait® Display Programme is a software used to rotate your viewing screen after the rotation of the LCD monitor.

The WinPortrait software driver replaces the original landscape graphics driver. WinPortrait works directly with the original video driver, allowing the Display Properties Control Panels to operate normally.

In landscape mode, WinPortrait is deactivated to allow the native driver to function normally. When rotating, WinPortrait software activates to allow portrait viewing.

### ANIMATION AND GAMES

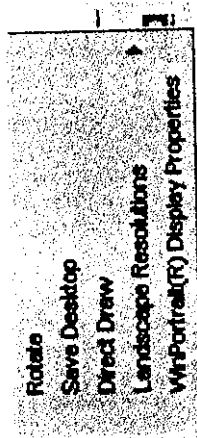
Direct Draw, TV, video, DVD, AVI, games and QuickTime are all means to display motion on the screen. They are designed to bypass the video driver and display directly. Many use Microsoft's Direct Draw standard. Sometimes they work in portrait orientation but in most cases they require a 4:3 aspect ratio landscape orientation. This is true also of full screen DOS. If these applications are required the user should pivot to a landscape orientation. Some applications are best viewed in portrait orientation others in landscape.

For more information, please refer to the Portrait Displays, Inc. web site at <http://www.portrait.com>.

### Rotate Your Screen Image

Choose any of the following methods:

1. Single-Click on the WinPortrait Monitor Icon and select the Rotate option from the pop up menu.
2. Double-Click on the WinPortrait Monitor Icon located on the taskbar.
3. Press: <Ctrl> + <Shift> + <R>
4. Single Click on the WinPortrait Monitor Icon and select WinPortrait Display Properties. Use available rotate options.

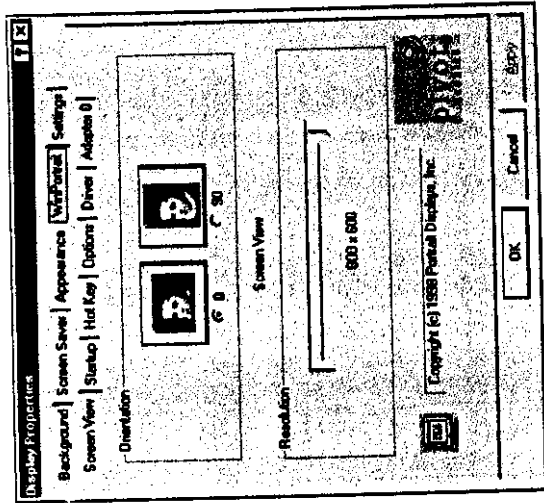


**Figure 18 Pop Up Menu**  
 (After a single click on the WinPortrait Monitor Icon)

### WINPORTRAIT DISPLAY PROPERTIES:

WinPortrait Display Properties are accessed via the following methods:

- Single click the blue monitor icon on the taskbar and select Display Properties.
- Open Display Properties by right clicking on the Desktop and selecting the WinPortrait tab.
- Open the Display program located in the Control Panel and select the WinPortrait tab.



**Figure 19 WinPortrait Display Properties - Screen View**

There are 6 other options that can be selected under the WinPortrait Tab in the Display Properties Menu. They are as follows:

#### Screen View

The orientation and the resolution of your screen can be set or changed at anytime here. Refer to Figure 19.

#### Startup

This is to set the default settings when you startup Windows. The orientation and the resolution of your screen can be set here when you startup windows, the settings will follow those stated here. Refer to Figure 20.

#### Hot Key

You can choose between 3 keyboard keys: Control (Ctrl), Shift and Alternate (Alt) to be the hot keys. The hot keys are used to enable the WinPortrait software and rotate your viewing screen. Refer to Figure 21.

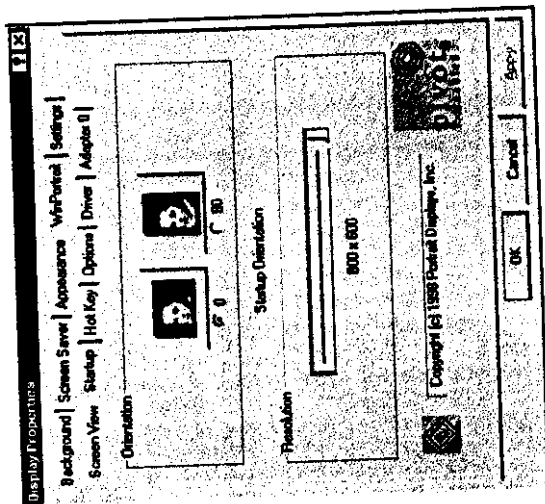


Figure 20 WinPortrait Display Properties - Startup

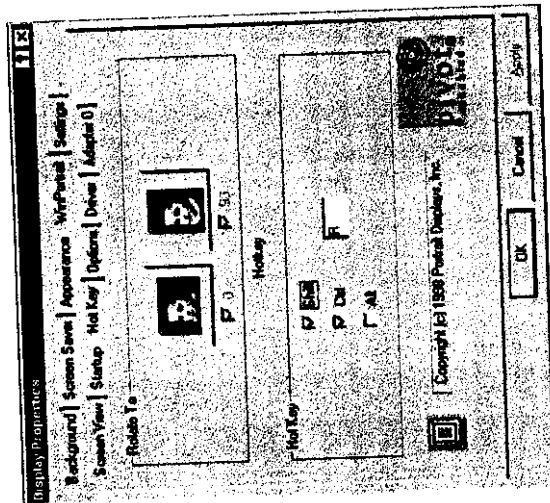


Figure 21 WinPortrait Display Properties - Hot Key

**Options**

You can rotate your screen, save your desktop icon position and see your screen refresh meter (typically applies to a CRT monitor as LCD monitors do not suffer from low refresh rates), start a Help file, Enable or Disable Direct Draw Drivers and Uninstall the WinPortrait Software.

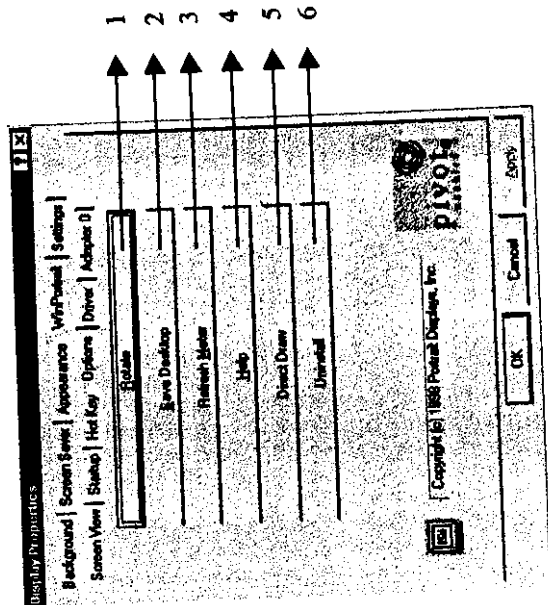


Figure 22 WinPortrait Display Properties - Options

**1. Rotate**

Select this to rotate your screen image

**2. Save Desktop**

This option save the desktop icon positions whether your icons are in the landscape or portrait orientation. This feature is only supported in Windows 95/98.

If the Save Desktop option is not selected, your desktop icons can rotate to an "off screen" area. Therefore it is recommended to use this option to anchor the icon positions on your desktop.

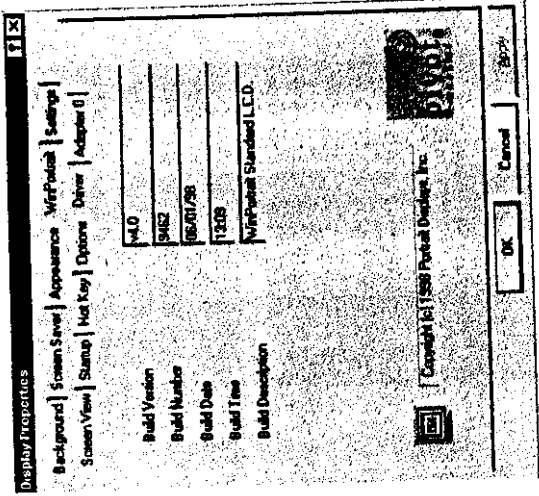


Figure 23 WinPortrait Display Properties - Driver

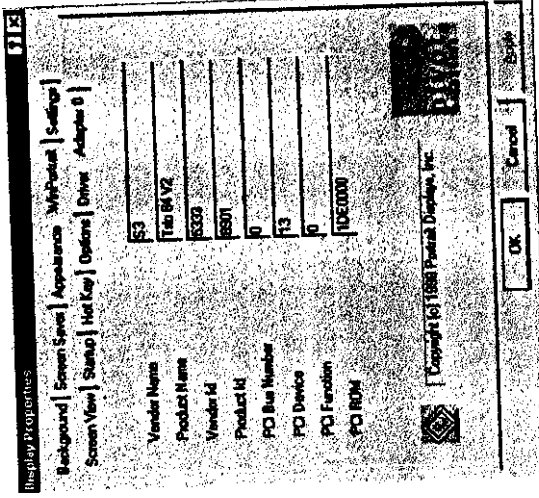


Figure 24 WinPortrait Display Properties - Adapter 0

**Note**  
The "Auto Arrange" option for desktop icons takes precedence over the WinPortrait® Save Desktop option. Turn "Auto Arrange" off when using the WinPortrait Saves Desktop option.

**3. Refresh Meter**  
This option typically applies to CRT monitors only as the Pure View P615U LCD monitor is not adversely affected by low refresh rates, therefore Pure View P615U LCD monitor users should ignore this refresh information.

**4. Help**  
Runs a very informative Help screen.

**5. Direct Draw**  
If a Direct Draw application incorrectly displays information on screen, simply select the "Direct Draw" button to temporarily deactivate the WinPortrait drivers. On restart the WinPortrait Screen View 90 degree button will be 'grayed out' indicating that Pivot software is currently inactive.

To reactivate WinPortrait, open Display Properties and select the 'Pivot Enabled' button. The 'Pivot Enabled' selection is available only after the 'Direct Draw' has been selected.

**6. Uninstall**  
The Uninstall option will remove the WinPortrait software from your computer and reset all graphics drivers configurations to what it was prior before the installation of WinPortrait.

**Driver**  
Displays the Build Version number and other WinPortrait Information. Refer to Figure 23. The one shown may differ from yours.

**Adapter 0**  
Displays information about the primary graphics card or chip set in your computer. If you have more than one graphic card (a secondary graphic card) installed in your computer, the Adapter 1 tab will be visible. Refer to Figure 24. Your configurations may differ from the one shown.

Power Consumption

- Operation: <35 Watts (LCD)
- <15 Watts (USB)
- Standby: <5 Watts

Input Signal

- Video: RGB Analog
- Signal Level: 0.7Vp-p
- Synchronisation: H/V separate (ITL level)
- Horizontal: 31kHz - ~~88-110kHz~~ 60kHz
- Vertical: 56Hz-75Hz
- Frequency: Audio Line In
- Audio: 0.1 Vp-p
- Signal Level: USB Standard
- USB: *MAX RESOLUTION: 1024 x 768, 1200 - 1280 x 800*

Output Signal

- USB: 3 x USB Ports

Power Management

- VESA DPMS Standard

Features

- Plug and Play
- Portrait Function (Optional Software Required for this feature)
- Active speaker: 2 x 2 Watts
- Built-In USB Speaker
- Built-In USB Hub

CHAPTER 7 SPECIFICATIONS

Specifications are subject to change without notice for the purpose of improvement.

Monitor

- 15" Super Thin Film Transistor Liquid Crystal Display Panel
- Pixel Pitch: 0.297mm (H) x 0.297mm (V)
- Brightness: 210cd/m<sup>2</sup>
- Contrast ratio: 230:1
- Backlight: 4CCFL
- Colours: 262K
- Dimensions: 379mm (W) x 372mm (H) x 188mm (D)
- Weight: 5.5kg
- VGA: 15-pin D-sub Connector (female)

Viewing Angle

- Horizontal (L,R): Total 160 degrees, 80° left, 80° right
- Vertical (U,D): Total 160 degrees, 80° up, 80° down

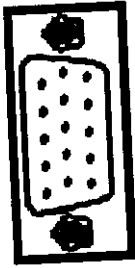
User Controls

- Front Panel: Power, Select, ▽, △
- On-Screen Display: Brightness, Contrast, Horizontal Movement, Vertical Movement, Horizontal Size, Phase

Power Supply

- Adapter Input: 100-240V AC
- Adapter Output: 12V DC 4.3A
- Connector: 2-pin dedicated power socket

Connectors



Pin Number	Signal
1	Red Signal
2	Green Signal
3	Blue Signal
4	Ground
5	Ground
6	Red Signal Ground
7	Green Signal Ground
8	Blue Signal Ground
9	Open
10	Ground
11	Ground
12	DDA
13	Horizontal Sync Signal
14	Vertical Sync Signal
15	DDCK

Dimensions

The dimensions for PureView P615U are as follows:

379mm(W) x 372mm(H) x 188mm(D)

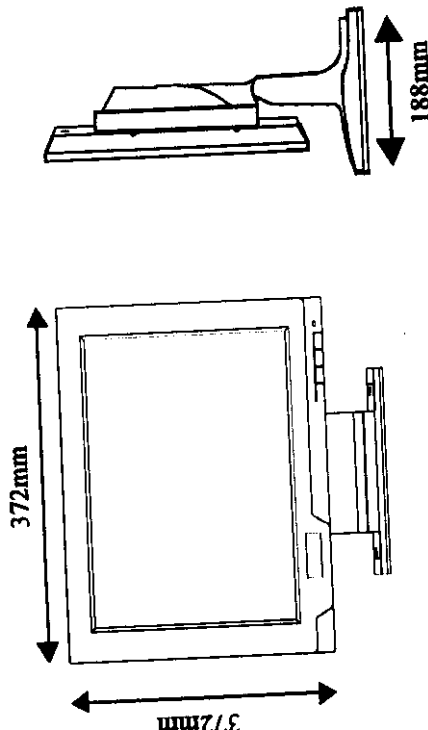


Figure 25 Dimensions of the LCD monitor

Power Management System

This monitor conforms to the VESA DPMS standard. Power consumption can be suppressed by putting the display unit into stand-by mode. However, to maintain this standard, equipment used with the monitor must also conform to the VESA DPMS standard.

APM State	Screen Status	LED Colour	Power Consumption
ON	Active	Green	<35W
SLEEP MODE	Black Out	Orange	<5W

APM: Advanced Power Management

## Warnings and Cautions

Please read the following for a guide on how to take care of PureView P615U and prevent accidents or damages from improper handling or operation.

Make sure all power is switched off when connecting, disconnecting, and cleaning.

Install PureView in a well-ventilated location. This is to allow adequate dissipation of heat.

Keep the monitor away from dirt or dust.

For added protection, when the monitor is left unattended and unused for long periods of time, unplug it from the wall outlet. This will prevent damage to the monitor due to power-line surges.

Always handle your LCD monitor with care when moving it.

Tilt your LCD screen to its full tilted angle before rotating.

Avoid placing the monitor in direct sunlight and heat sources. Do not install in a location with a great deal of moisture or dust.

Do not apply pressure to the screen. The LCD is very delicate.

Do not touch the screen directly with your fingers. You may damage the screen, and oil from your skin is difficult to remove.

Do not drop, scratch, and bump it on a hard surface as the LCD panel may break or crack as a result of incorrect handling.

Do not use this monitor near water or drop water on the surface of the LCD panel. If it is wet, wipe off with soft cloth to prevent discoloring.

**X** Do not place this monitor in an unstable position. The monitor may topple causing serious injury to a child or adult and serious damage to the appliance.

**X** Never push objects of any kind into this monitor through the ventilation slots as they may touch dangerous voltage points or short out parts that could result in fire or electric shock.

### Cleaning the LCD Monitor

To clean the PureView P615U screen:

- Gently wipe the screen with a clean anti-static cloth, or a soft, clean, lint-free cloth. This removes the dust and other particles that can scratch the screen.
- If it is still not clean, blow on the screen and gently wipe with a soft, clean, lint-free cloth.
- Never pour or spray any liquid directly onto the screen or case of PureView.
- DO NOT APPLY PRESSURE TO SCREEN.

### Disclaimer

There is no recommended use of any liquid cleaners on the PureView P615U screen or case. Chemical cleaners may have detrimental effect on the PureView screen or case. Do not apply pressure when wiping the PureView screen. GES Singapore Pte Ltd will not be held liable for damage resulting from use of liquid cleaners or resulting from applying pressure on the screen.

Do not attempt to service this monitor yourself since opening or removing covers may expose you to dangerous high voltage or other hazards. Refer all servicing to qualified service personnel.



### Note:

If you are not sure about anything regarding the operation and the care of this appliance, consult your monitor dealer.

## Troubleshooting

### ➔ No Power

- Set the power switch (found on the right of the screen) ON. Check to see if the LED light comes on.
- Make sure the AC power cord in the back of the monitor is securely connected into a power outlet.
- Check the power source with another electrical device to make sure that you are receiving voltage.

### ➔ No Display

- Make sure the video cable supplied with PureView is tightly secured to the video card in the computer.
- Check to see if there is any disruption of the power supply. Eg. Power cord not plugged into the AC outlet and the monitor is not switched on.
- Check the contrast and brightness settings.

### ➔ Display is not centred and of a wrong size

- By pressing the OSD key at the button to the right of the monitor, adjust the vertical and horizontal settings in the OSD menu.

### ➔ Wrong Colours

- If any of the red, green, or blue colours are missing, check the video cable to make sure it is tightened correctly. The pins in the cable could be loose and cause a bad connection.
- You can also try using PureView with another computer.

### ➔ OSD Control buttons do not work

- Press only one button at a time.

### ➔ Poor Image

- Set the Graphic card to 1024 x 768Hz at refresh rate of 60Hz. To do this, go to the Start Menu-Settings-Control Panel and choose Display. Go to the menu with your VGA card settings to change it.
- Check the graphics card for proper sync scheme that matches PureView's specifications. Make sure the input signals are within PureView's specified range.
- Use Phase to fine tune your display quality.

### ➔ Auto Adjust does not provide an optimal display

- Display a full white colour screen (eg. Windows Explorer at a maximised window).
- Select Auto Adjust in the OSD Main Menu again

### ➔ The LCD Screen cannot be rotated

- Make sure the LCD screen is at its full tilted angle before rotating (refer to page 10)