



USER'S MANUAL

Second Publication
November 1998





Who should use this manual...

Congratulations on your purchase of TVsurf! This manual will guide you through the setup and assist you in connecting TVsurf to the proper devices. It also provides a guide through the TVsurf Browser and Email Application. Many useful graphics are included in this manual for illustration.

GES Part No: 54300121
TVsurf manual

GES Singapore Pte Ltd
28 Marsiling Lane
Singapore 739152
Tel: 7329898
Fax: 3687671

All Rights Reserved.
Printed in Singapore.

Second Edition - November 1998

NOTICE

Our company may make improvements and/or changes in the product(s) described in this publication at any time without notice. Changes are made periodically to the information herein, these changes will be incorporated in new editions of the publication. This publication may include technical inaccuracies or typographical errors.

TRADEMARKS

All registered trademarks are the property of their respective owners.



FCC Information

This equipment has been tested and found to comply with limits for a Class B digital device, pursuant to Part 15 of FCC Rules. These limits are designed to provide reasonable protection against harmful interference when the equipment is operated in a residential installation. This equipment generates, uses, and can radiate radio frequency energy and, if not installed and used in accordance with the instruction manual, may cause harmful interference to radio communications. However, there is no guarantee that interference will not occur in a particular installation. If this equipment does cause interference to radio or television reception, which can be determined by turning the equipment off and on, the user is encouraged to try to correct the interference by one or more of following measures:

- Reorient or relocate the receiving antenna.
- Increase the separation between the equipment and the receiver.
- Connect the equipment into an outlet on a circuit different from that to which the receiver is located.
- Consult the dealer or an experienced radio/TV technician for help.

Operation of this equipment in a residential area may cause harmful interference in which case the user will be required to correct the interference at his own expense. Any changes or modifications not expressly approved by the manufacturer could void the user's authority to operate the equipment.

FCC ID: JUK0798GES702

CE Certification

This device complies with the requirements of the EEC directive 89/336/EEC with regard to "Electromagnetic compatibility."



CONTENTS

Chapter 1 Introduction

Introduction	1-1
1.1 What exactly is TVsurf?	1-2

Chapter 2 Overview of TVsurf

Overview of TV Surf	2-1
2.1 Front View of TVsurf	2-2
2.2 Back View of TVsurf	2-3
2.3 Video Settings	2-4
2.4 Remote Control Functions	2-5
2.5 Wireless Keyboard	2-6

Chapter 3 Get Started!

Get Started!	3-1
3.1 Check List	3-1
3.2 Placement of TVsurf	3-2
3.3 Connection of TVsurf	3-3
3.3.1 Connecting to the Power Supply	3-3
3.3.2 Connecting the Telephone Line	3-4
3.3.3 Connecting the Video and Audio Cable	3-4
3.3.4 Connecting the S-Video Cable	3-5
3.4 Setting TVsurf's Video Settings	3-6
3.5 Wireless Keyboard	3-6
3.6 Switching on your TV	3-7
3.7 Switching on TVsurf	3-7
3.8 Settings Up TVsurf	3-7
3.8.1 Connection Environment	3-10
3.8.2 Browser Environment	3-12
3.8.3 Mail Environment	3-14
3.8.4 Template Configuration	3-15
3.8.5 System Environment	3-18
3.9 Connecting to the Internet with TVsurf	3-20



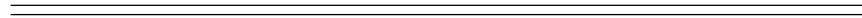


Chapter 4 The Browser

The Browser	4-1
4.1 Outline	4-1
4.2 Browser Screen and Menu	4-2
4.3 Control	4-5
4.3.1 Scheme	4-5
4.3.2 Scroll	4-5
4.3.3 Move and select the focus	4-5
4.3.4 Form	4-5
4.3.5 Switching Frames	4-6
4.3.6 Clickable Map	4-6
4.3.7 Sound Files	4-7
4.3.8 User Authentication	4-8
4.4 Entry of Characters	4-9
4.4.1 Supported Functions	4-9
4.4.2 Template	4-10
4.5 Browser Functions	4-11
4.5.1 Selecting a page from history	4-12
4.5.2 Mail	4-12
4.5.3 Favorites	4-13
4.5.3.1 Select Page/Register: Change Title	4-14
4.5.4 Jump	4-15

Chapter 5 Mail Operation

Mail Operation	5-1
5.1 Outline	5-1
5.2 Writing a mail	5-2
5.3 Receiving a mail	5-2
5.3.1 Mail Listing	5-2
5.3.2 Received Mail	5-4
5.4 Attached File	5-5
5.4.1 GIF file	5-6
5.4.2 WAV Files	5-7
5.5 Saving addresses	5-7
5.6 Automatic checking for new mails	5-8
5.7 Saving a mail	5-8
5.8 Sending an email	5-9
5.8.1 Entry of an address	5-9
5.8.2 Template	5-10



5.8.3 Attach a file	5-10
5.8.4 Saving a mail sent	5-11
5.8.5 Saving a mail not sent	5-12
5.8.6 Reply to a mail	5-12
5.8.7 Forward mail	5-13
5.8.8 Address Book	5-13
5.9 Attach Data List	5-14
5.10 Mail List At Server	5-14

Appendix A Additional Information

Features	A-1
----------------	-----

Appendix B

Warning and Cautions	B-1
Troubleshooting	B-1

My Favourite Pages

For your records

The serial number of this product is on the backpanel of TVsurf. Write the serial number in the space below and keep this guide as a permanent record of your purchase to aid in identification in the event of theft or loss.

Model Name: TVsurf
Model Number: P702W
Serial Number:
Purchase Date:
Warranty Card Number:





Appendix B

I Warnings and Cautions

TVsurf should be placed on a horizontal stable surface and about 10cm from any object for good ventilation. Avoid covering the top of the unit.

Do not place the unit in direct sunlight, near a heat source or near any water, oil or smoke.

Never attempt to repair the defective unit yourself. Opening and removing the cover may expose you to dangerous hazards. Always consult an authorised service personnel.

Clean the unit with a soft and dry cloth when necessary. Do not pour or use any chemical cleaners on TVsurf as it may have a detrimental effect on the unit.

When removing AC power plug, always hold the plug and not the cable.

➔ Troubleshooting

No dial tone message

- Check the telephone connection. Ensure that the line is connected and is not engaged.
- Test the telephone connection to the ISP by connecting the telephone line to your phone and dial the ISP phone number. If it is engaged, wait for a few minutes and reconnect. If you do not hear a dial-tone, contact the ISP helpdesk number or the public telephone service line.
- Is an outer line number necessary before the actual ISP number is dialled
- Check that the phone line cable is connected from the wall socket to the "line" input of TVsurf.



No display on TV screen

- Ensure that the TV is switched on.
- Check that TVsurf is connected to the TV properly.
- Check whether the TV is on the correct source selection (AV1 AV2 or 10, 11).
- Check that the reset button is not stuck.
- Check that the AC power source is on.

No colour

Check your video settings. Refer to Pg 2-4.

Full screen is not seen

- Check your video settings. Refer to Pg 2-4.
- Check your TV for a resizing function and resize the screen accordingly.

No graphics/images displayed on web page

- Reload the web page.
- Graphics may be too large to be displayed in the image memory. Reset and reload the page.
- TVsurf does not support all graphics. Therefore, there is no guarantee that TVsurf will display all graphics.
- When you scroll a web page away from a downloading image, the downloading of that image will halt until you reload the page again.

No sound

- Ensure that audio cables are connected properly
- TVsurf supports downloadable "wav" files and there is no guarantee that it will support other sound formats.



Warning and Cautions / Troubleshooting

Unable to move cursor to the desired hyperlink.

- The web page display may contain a frame window. Use the [Frame] button on the remote control or [Frame] hotkey on the keyboard to move to the target frame.
- Try moving the cursor in a different direction. Sometimes when trying to move to a link on the right or left of the screen, you may first have to move a line up or down.
- Check if the batteries of the remote control or wireless keyboard are placed properly or need to be replaced.

Internet web server error

- The page may not exist. Check the typing or try it again when the communication traffic has reduced.
- The URL (address of the page <http://www...>) might have been typed in wrongly.

Logon authentication error message

- Check the login name and password (case sensitive).
- Reset the unit and try to connect again. If problem persists, contact the ISP helpdesk.

Clicking on link and nothing happens

- Refer to the communication indicators (refer to Figure 4-2 on page 4-2) to see if the web page is loading. If the 4 lights are flashing, it indicates that there is communication between TVsurf and your Internet Service Provider and your page is just taking some time to download. This is due to high traffic within the Internet Service Provider.





Appendix A

Additional information

This chapter provides more information about TVsurf.

Features

CPU Unit

- PA-RISC Embedded Processor, 66 MHz Operation Frequency
- 8K Write-Back Cache for enhanced performance
- 4M Bytes DRAM (EDO or Fast Page)
- 2MB Flash Memory, for Operating System and Applications
- NetFront™ Browser and Email Application

Stand By Processor

- Stand-by Processor for Power-Saving Management
- External IR Remote Signal Monitor

Modem Unit

- 33.6Kbps modem
- Data Mode 33.6Kbps, V.34, V.32bis, V3.2, V.22bis, V.22A/B, V.23 and V.21; Bell 212A, and 103
- V17, V.29, V.27ter, and V.21 ch2, Class 1 using 56K chip
- Voice/Audio Mode Enhanced ADPCM compression/decompression 8 bits
- Autospan simultaneous audio/voice and data transmission
- Commutation S/W compatible with AT command sets



Display Unit

- Supports EDO DRAM from 1MB up to 4MB
- Provides the Best Text and Video quality for Composite Underscan TV output using proprietary 3-line buffer Flicker-Free technology
- Single crystal integrated TV encoder for direct NTSC/PAL output
- NTSC (640x480, 60hz), PAL(800x600 and 640x480 at 50Hz)
- S-video & composite video output directly connected to TV video input port

Power Unit

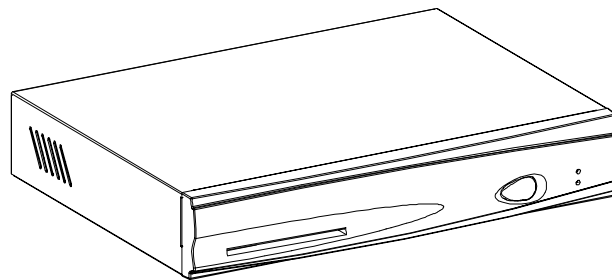
- External Wall Adapter
- 90-260Vac Universal AC Input
- 5Watts Power Dissipation

Remote Control Unit

- IR Remote Controller
 - 38Khz Carrier
- IR Remote Keyboard (Optional)
 - 86 Keys slim Keyboard 360(L) x 165(W) x 35(H)
 - 38Khz carrier, 1.67Kbps transfer rate
 - 5 meters, +/- 30 degree

Mechanical Unit

- Dimension: 212(L) x 140(W) x 38(H) mm





Introduction

Chapter 1 Introduction

TVsurf is simple to use. It is ideal for anybody who wants to gain easy access to the Internet.

GES Singapore Pte Ltd has designed this device to allow anyone without any special skills or complex equipment to gain access to the Internet. Using only a TV, a standard voice telephone line, and an internet account, you can have a fast and user friendly access to the Internet community using the simplest of equipment.

The Internet is an information highway that spans the globe. TVsurf's user friendly Web browser gives you the tools and features to exploit the Internet as a useful communications medium. Features such as email and web browsing are all integrated into TVsurf.

The TVsurf displays on a television and with the infrared remote control or a wireless keyboard (optional), you will be able to enjoy the Internet's vast wealth of information.





1.1 What exactly is TVsurf?

TVsurf is an Internet set top box for the television. It provides convenient access to the Internet, and displays web pages on your television screen.

TVsurf has a modem that connects directly to your telephone line. A remote controller and an optional wireless keyboard allows you to surf and email from the comfort of your living room.

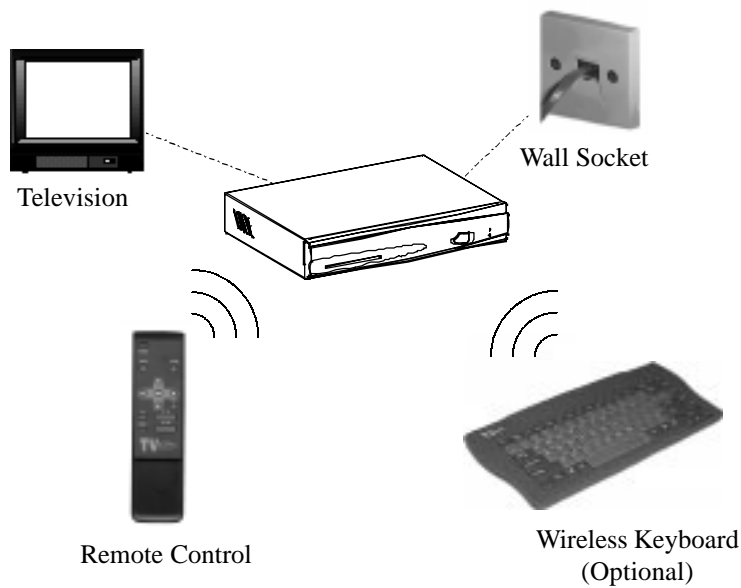


Figure 1-1 What is TVsurf



Note:

You will need an internet access account before you can surf or email. Please refer to your local Internet Service Provider (ISP) for more information.



Chapter 2

Overview of TVsurf

This chapter provides a general introduction to the features of TVsurf. Illustrations of the front and back views of TVsurf are provided to assist you with your connection to a television.

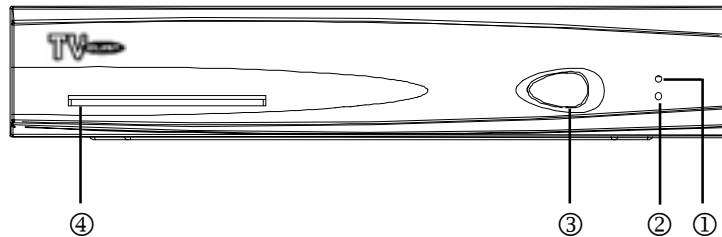
The TVsurf package comes with the remote control and other connecting cables. Please refer to Page 3-1 for the TVsurf checklist to make sure you have everything provided. The wireless keyboard is an optional item.



Figure 2-1 Overview of TVsurf



2.1 Front View of TVsurf



①	TEL	Green LED Indicates that TVsurf is connected to the telephone line and that the modem is active and is connected to the Internet.
②	POWER	Red LED - Indicates that TVsurf is switched on. Green LED - Indicates that TVsurf is connected to a power source but on standby mode.
③	Infrared receiver / Reset Button	The remote control or wireless keyboard should be pointed towards the receiver. It is also a reset button which re-initialises the unit.
④	Smart Card Reader	This Smart Card reader will be available in the next version.

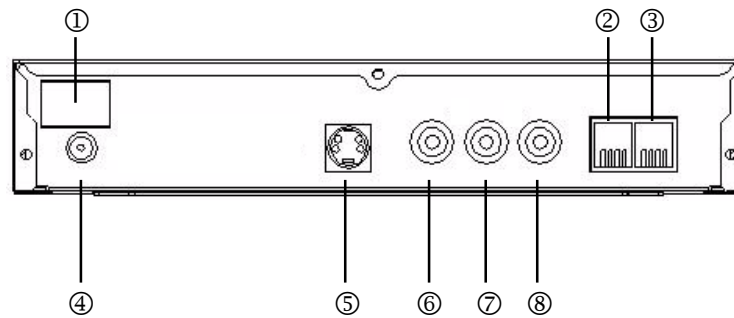
Table 2-1 Front View of TVsurf



Overview of TVsurf

2.2 Back View of TVsurf

To begin using TVsurf, you will first have to make a few simple connections. Shown below are the connectors from the back of TVsurf to the television and other peripherals.

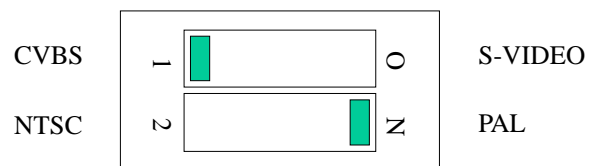
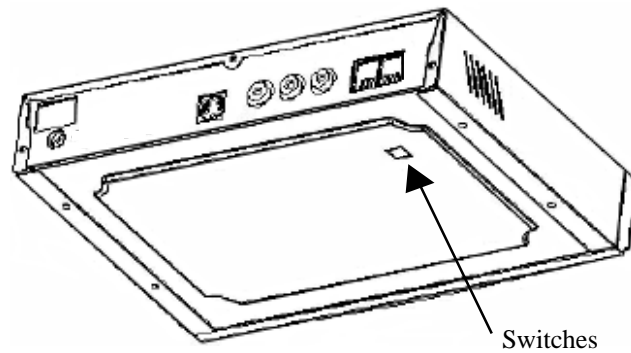


①	ON/OFF Switch	Switches TVsurf on or off.
②	Phone	Connects to your phone if you are sharing the phone line with TVsurf.
③	Line	Connects a telephone line to the wall socket.
④	Power	Connects the power AC power cord.
⑤	S-Video	Connects to the S-Video input of the TV.
⑥	Video Out - Yellow	Connects to the video input of the TV.
⑦	Audio (L) - White	Connects to the Audio (L) input of the TV.
⑧	Audio (R) - Red	Connects to the Audio (R) input of the TV.

Table 2-2 Back View of TVsurf



2.3 Video Settings



On the bottom of TVsurf, there are 2 switches for selection of video mode and TV system. By default, it is placed such that CVBS (Composite Video) and PAL are selected. You may use a pointed object (eg. pen) to set it otherwise. You may choose between Composite Video or S-Video Mode depending on the TV type and either NTSC or PAL depending on your TV system.



2.4 Remote Control Functions

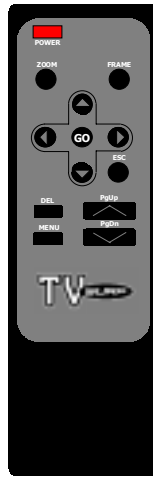






Figure 2-2 Remote Control Functions

- POWER:** Switches on/off TVsurf.
- ZOOM:** Enlarges the text on a web page.
- FRAME:** Changes focus between frames.
-  Goes to a selection one level up.
-  Scrolls screen to the left or goes to one selection to the left.
- Go:** Accepts a selection made.
-  Scrolls screen to the right or goes to one selection to the right.
-  Goes to a selection one level down.
- ESC:** Rejects selection or escapes from any selection.
- DEL:** Deletes text which you have entered.
- PG UP:** Scrolls the screen by one page upwards.
- PG DN:** Scrolls the screen by one page downwards.
- MENU:** Displays the menu bar.



2.5 Wireless Keyboard (Optional)



Figure 2-3 Wireless Keyboard

The wireless keyboard is an optional peripheral which you may use with TVsurf. With this keyboard, you will find it very convenient to surf the Internet or write your email from the comfort of an armchair. It is ergonomically designed for an easy and firm grasp during typing.

It requires two AAA batteries which should be changed every 6 months (normal operation).



Note:

When using the wireless keyboard to enter information in the Browser and Mail Application, press the [ESC] key to cancel or the [Menu/Input] key to confirm what you have keyed in and return to the previous screen.



Definition of keyboard function keys:

The wireless keyboard has 13 function keys that are used as "hot keys". You can save time and effort by using them.

Menu/Input:	Displays the Menu Bar/Confirms text entry.
Back:	Returns to the previous page.
Forward:	Forwards to the next page (provided it was viewed previously).
Reload:	Refreshes the current page.
Frame:	Switches the focus between frames.
Home:	Displays the homepage defined in the Browser Environment.
Stop:	Stops the loading of the current web page.
Mail:	Begins the TVsurf Mail Application.
Favorite:	Displays a list of your bookmarked web sites. You may add or edit the list.
Jump:	Allows you to key in a URL (http://...) and connects to that web page.
Setup:	Displays the setup menu.
Zoom:	Increases or decreases font size accordingly.
Power On/Off:	Switches TVsurf on or off.





MY NOTES:





Get Started!

Chapter 3 Get Started!

This chapter will be useful for anyone who is using TVsurf for the first time. Each section of this chapter will describe what you should do from the moment you take TVsurf out of the box till you enter the TVsurf Browser and Mail Application. At the end of this chapter you will be sitting on your couch and using TVsurf, all ready to enjoy the vast information which the Internet can provide!

3.1 Check List

First of all, make sure everything you bought is in front of you. TVsurf, the remote control and all necessary wires come in a single box. The keyboard is in a separate box. Let's go through a list of things you should have.



Figure 3-1 What you should have in the TVsurf box

1. TVsurf
2. Telephone Line Cable
3. TVsurf User's Manual
4. Remote Control
5. Video & Audio Cable (3 way RCA cable)
6. Power Adapter (with a 2 pin adapter plug)



Note:

The S-Video cable is not provided with TVsurf.



The keyboard comes in a separate box. In that box you should find the following:

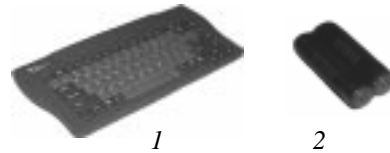


Figure 3-2 What you should have in the keyboard box

1. Keyboard
2. 2 "AAA" batteries

3.2 Placement of TVsurf

First of all, you should find a suitable location to set up TVsurf. Make sure that it is about 10cm from any object for good ventilation. Please refer to the Appendix B for more advice on the placement of TVsurf.

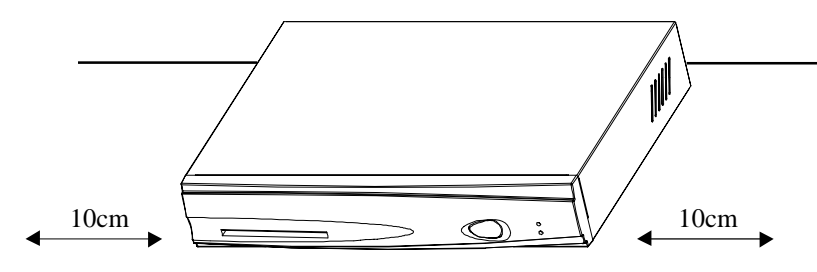


Figure 3-3 Placement of TVsurf



Get Started!

3.3 Connection of TVsurf

With reference to section 2.2 on Page 2-3, you may now begin to make necessary connections to TVsurf.



Figure 3-4 Connection of TVsurf

3.3.1 Connecting to the Power Supply



Figure 3-5 Connection of TVsurf to the Power Supply



3.3.2 Connecting the Telephone Line

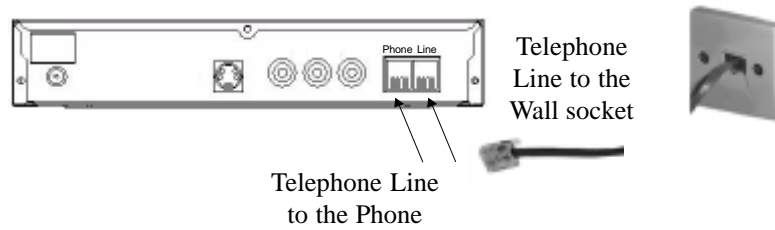


Figure 3-6 Connection of TVsurf to the telephone line

3.3.3 Connecting the Video and Audio Cable

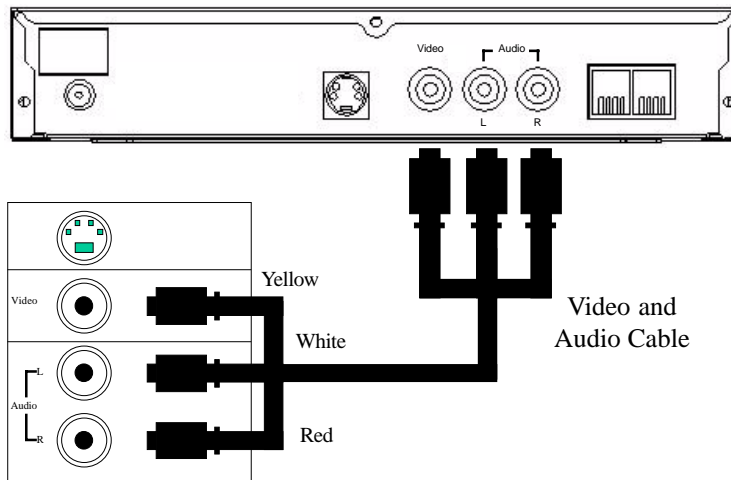


Figure 3-7 Connection of TVsurf to the Video and Audio Cable



Note:

TV specifications differ. Your TV may have only one input for audio. In this case, use either the white or red cable.



Get Started!

3.3.4 Connecting the S-Video Cable

Instead of the yellow video connection, use an S-video cable if your TV supports this function.

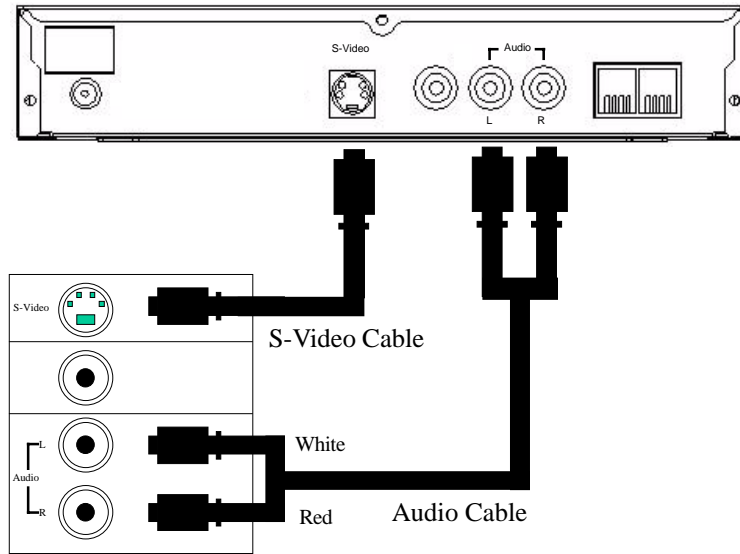


Figure 3-8 Connection of TVsurf to the S-Video Cable



Note:

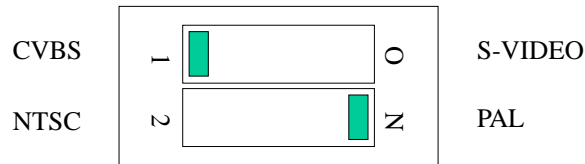
The S-video cable is not supplied with the TVsurf package.





3.4 Setting TVsurf's Video Settings

By default, it is set to the Composite Video Mode (the video mode when not using the S-video option) and PAL. Make sure you set the video settings before switching on TVsurf.



Depending on the country you are in, you may have to select either NTSC or PAL for your television type. If you are not sure about these settings, you could either check your television User's Guide or test the output of TVsurf when using both selections and set it to the option which gives the best results.



Note:

Use the S-video mode if it is supported by your TV. S-video mode provides clearer images and its performance is noticeably better than Composite Video mode. You may refer to section 2.3 Video Settings on Page 2-4

3.5 Wireless Keyboard (Optional)

Insert the 2 "AAA" batteries into the battery compartment on the bottom on the keyboard. Take note to install these batteries in the proper direction (refer to the plus and minus markings on the battery). There are engraved markings in the battery compartment to provide assistance in correct installation of the batteries.



Note:

When using the wireless keyboard and remote control, always remember to face the infrared emitter of the keyboard towards TVsurf. This is to enable easy transmission of the information from the keyboard to TVsurf.



Get Started!

3.6 Switching on your TV

Switch on your TV and select a video channel/source. This could either be the channel/source from your video recorder or Laser Disc or Video compact disc player. For example, 10, 11, 12 or AV1, AV2, AV3...etc. Refer to your TV manual for more information.

3.7 Switching on TVsurf

After you have ensured that all the connections and the placement of TVsurf is alright, please switch it on. The ON/OFF switch is located at the top left of TVsurf's back panel. You may also press the [Power] button on the remote control or [On/Off] key on the wireless keyboard.

When TVsurf is on, a front page is loaded. This front page works like a web page. Click on other links to find out about TVsurf and the makers of TVsurf. This front page may be different from the one shown on Page 3-8.

3.8 Setting Up TVsurf

Before you are able to access the Internet, you are required to set up several options.

TVsurf has five setups that can be changed while the browser is running.

1. Connection Environment
2. Browser Environment
3. Mail Environment
4. Template Configuration
5. System Environment

For the Internet and Mail access using TVsurf, just setup the Connection Environment, Browser Environment and Mail Environment. There is no immediate necessity to set up the Template Configuration and System Environment options at this moment (you may want to go through it later).

The Setup screen will be displayed when "Setup" is selected from the Browser menu. See Figure 3-10 on Page 3-8.





← Status bar

Browser menu
Use [Menu] button on the remote or [Menu/ Input] key on the key-board to activate.

Switches to setup screen, such as connection, browser and mail.

Figure 3-9 Selection of the Setup icon



Figure 3-10 Connection Environment



Get Started!

To display the Browser Menu, press the [Menu] button on the remote control or the [Menu/Input] key on the keyboard (refer to Figure 3-9 on Page 3-8). Navigate to the Setup icon using the left and right arrow keys on the Browser Menu and press [Enter] to select it. You may also press the [Setup] hotkey on the keyboard. You will then see the Setup Screen. See Figure 3-9 on Page 3-8.

To get from one environment setup to the next,

- when currently not in any setup, use the arrow keys to move to the desired setup environment and press the [GO] button or [Enter] key to select it.
- when already in the setup screen of any environment, scroll down to the [CANCEL] option and press the [GO] button or [ENTER] key to get back to the environment setup options.

To key in information in the setup menu,

- using the arrow buttons/keys, scroll to the desired box. Press the [GO] button or [ENTER] key on either the remote control or wireless keyboard.
- a text box will appear on the screen and in this box, type the necessary information.



Note:

If you do not have a wireless keyboard, the soft keyboard will appear for you to key in text. Using the arrow buttons on your remote control, you may select the text you require.

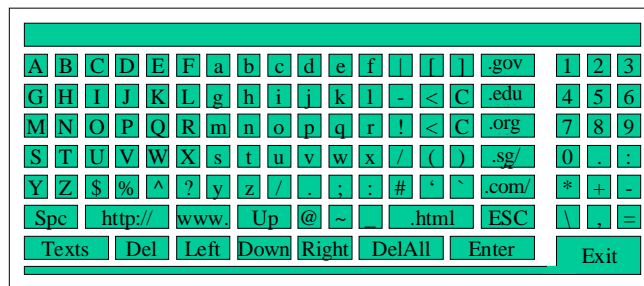


Figure 3-11 Software Keyboard





To confirm the text you have entered,

- Press the [Exit] button on your soft keyboard or
- Press the [Menu/Input] hotkey on your wireless keyboard

To cancel, press the [ESC] button/key



Note:

The setup is stored after clicking "OK". If another environment is selected or the program is terminated prior to clicking "OK", the new setup will not become effective.

3.8.1 Connection Environment

This section describes how to setup the dial up connection (with reference to the Figure 3-12 found on the next page). In the following description, underlined text denotes the default value.

1 Type of Dialing (Tone, Pulse)

Select the dial method. It is normally set to the Tone.

2 Outer Line Number

This is the number which TVsurf will dial before calling your Internet Service Provider. Most of the time this is a single number used to access to an external connection. For example, in some offices, a number '9' is required to be pressed before you are able to call someone outside of the office. The number '9' is therefore considered as the Outer Line Number.

In most cases, when a call is made from home, the Outer Line Number is not necessary and the Outer Line Number entry box can be left empty.

3 Number to be connected

This is the number TVsurf will dial. This number will be used to connect to your Internet Service Provider (ISP). You will be able to find this number in your ISP User's Guide.



Get Started!

4 First Name Server

This can be found in your Internet Service Provider User's Guide. It will look something like this, 123.321.88.99. These series of numbers indicate the location of the first ISP server to which TVsurf can connect and access the Internet. It is also called the Primary DNS or First Domain Name.

5 Second Name Server

This can be found in your Internet Service Provider User's Guide. It will look something like this, 123.321.88.99. These series of numbers indicate the location of the second ISP server which TVsurf can connect and access the Internet. It is also called the Secondary DNS or Second Domain Name. Certain ISPs may not provide this. In this case, leave this blank.

6 Login Name

This is the name you use to login to your ISP account. This name is provided by your ISP upon applying for your Internet account.

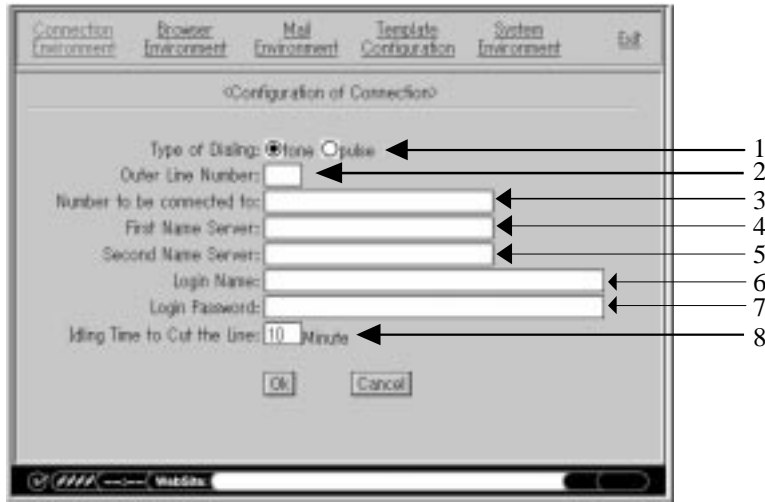
7 Login Password

This is the dial-in password provided by your ISP upon applying for your Internet account.

8 Idling Time to Cut the Line (10 minutes)

When you do not access any web site for sometime (idling), TVsurf can disconnect from the Internet automatically. This saves cost for Internet account plans that are based on connection time. You can therefore set the time before disconnection. TVsurf will automatically reconnect when necessary.





3.8.2 Browser Environment

This section describes how to setup the Browser Environment (with reference to the Figure 3-13 found on the next page). In the following description, underlined text denotes the default value.

1 Proxy Host

Setup the host name of your ISP proxy server. The proxy server host name can be found in your ISP User's Guide and would look something like this, "proxy.tvsurf.com.sg". If no proxy host name is provided, please leave this box blank.

2 Proxy Port (8080)

Setup the port number. This can be found in your ISP User's Guide. If no proxy host name is provided, please leave this box blank.

3 No Proxy Hosts

If you are accessing the Internet on an ISP which does not use any proxy host, write down the host name (eg. "noproxy.tvsurf.com.sg") in this entry box. If you are not sure about this, refer to your ISP User's Guide or call your ISP Helpdesk.

4 Homepage (file1\1.htm)

When you enter TVsurf, you can set the first page in which TVsurf will




Get Started!

display. In this entry box, you are required to setup the URL (eg.http://www.anywebsitename.com") for the default homepage. Connection will be made automatically if a web site on the Internet is chosen as the default homepage.

5 Reading Image Data (No, Yes)

Select whether GIF and JPEG images are displayed or not. In case that it is not displayed, the layout is same as the one which is displayed but images are empty rectangular boxes. The layout itself will not change even if "NO" is selected.

Note:

 TVsurf does not support all graphic formats. There is no guarantee that it will display all graphics.

1
2
3
4
5
6
7
8



Figure 3-13 Browser Environment



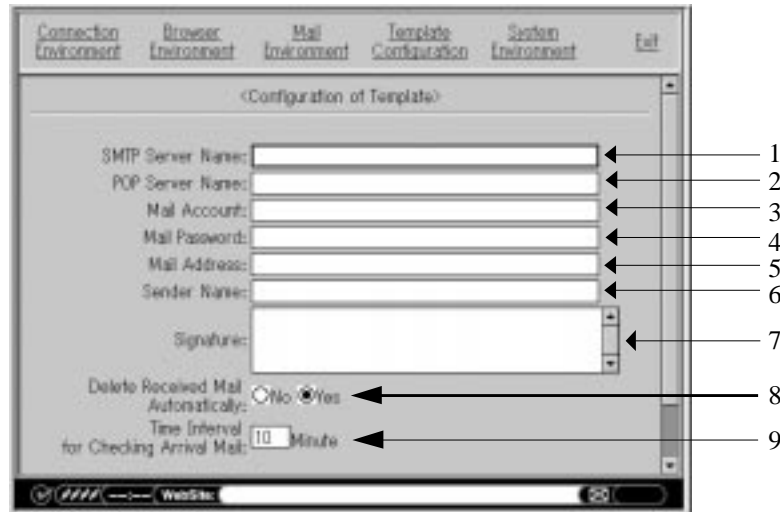


Figure 3-14 Mail Environment

3.8.3 Mail Environment

This section (with reference to the Figure 3-14) describes how to setup the environment for mail exchange.

1 SMTP Server Name

Setup the domain name of the SMTP server. This can be found in your ISP User's Guide and will look something like this, "smtp.tvsurf.com.sg".

2 POP Server Name

Setup the domain name of the POP3 server. This can be found in your ISP User's Guide and will look something like this, "po.tvsurf.com.sg".

3 Mail Account

This is the log-in name you use for your mail account. This is provided by your ISP upon applying for an email account.

4 Mail Password

This is the password of your mail account and is provided by your ISP upon applying for an email account.



Get Started!

5 Mail Address

Type in your email address (eg. name@tvsurf.com.sg) here so as to enable replied email to be sent back to you. Your email address is provided by the ISP upon applying for an email account.

6 Sender Name

Setup the sender name which would be displayed when a mail is sent. The name which the typed in here will be displayed when sending email.

7 Signature

Setup your signature. This is any additional information which you want to add in every email you send. Most email users write their names and email address here. This file is thus called the Signature file.

8 Delete Received Mail Automatically (No, Yes)

Your ISP server normally stores all your incoming mail until you have downloaded it. Keep it to the default selection of "Yes" if you want to keep your mail in the ISP server even after downloading. However, be sure that your ISP mailbox quota has not been exceeded. If this happens, new mail cannot be received. Check with your ISP on the amount of mail its mailboxes can contain.

9 Time Interval for Checking Arrival Mail (10 minutes)

Setup the time interval to check for incoming mail when TVsurf is connected to the Internet.

3.8.4 Template Configuration

Template allows you to store useful sentences, names, addresses, telephone numbers, etc. Using the Template allows you to save time and effort keying in text which is often required. For character entry, refer to "4.4 Entry of Characters".



Note:

The template function is only available when using the soft keyboard.

Initial screen

The list of standard sentences which are registered is shown. Refer to Figure 3-15 for an example.



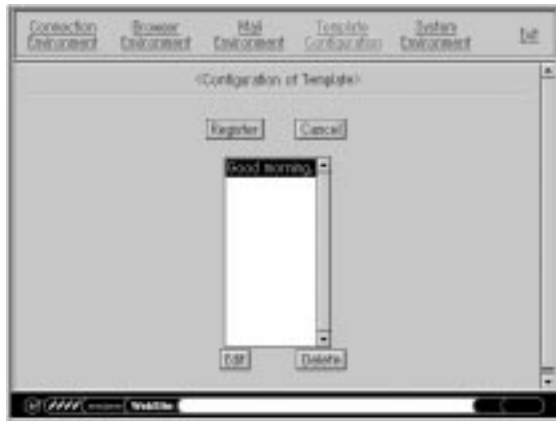


Figure 3-15 Template Configuration - Initial screen

Registration

New standard sentence can be added to the list of previously registered templates. Select [Register] and then key in the sentence that you would like to register as a template. Select [Ok] to save. Refer to Figure 3-16.



Figure 3-16 Template Configuration - Registration





Get Started!

Edit

You may edit any registered sentence. Select [Edit] and you may then key in the new sentence. Select [Ok] to save. Refer to Figure 3-17.

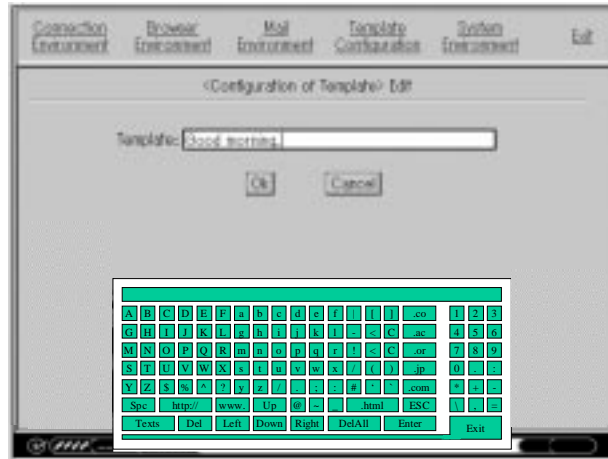


Figure 3-17 Template Configuration - Edit

Delete

Use the arrow keys to select the templates you wish to delete and delete them by selecting [Delete]. Press [OK] to confirm. Refer to Figure 3-18.



Figure 3-18 Template Configuration - Delete



Using Templates

When using the soft keyboard, press [Texts] to get to the Template menu. From here, select the Template you want to use and then select [OK] to confirm your choice. The text will appear in the text box. Please refer to "4.4.2 Template".

3.8.5 System Environment

This section describes how to setup the System Environment (with reference to the Figure 3-19 found on page 3-19). In the following description, underlined text denotes the default value.

1 Keyboard Type (Soft, Hard)

Selection of the type of keyboard.

If you do not have the wireless keyboard, keep it at the default setting of [soft] to use the software generated keyboard. You may want to refer to "4.4 Entry of Characters".

If you have bought the wireless keyboard, you may select either option as TVsurf will still recognise input from the wireless keyboard even if the software keyboard option has been checked.

2 Colour for Focusing on Control (Black, Red)

When you use your arrow back and forth to move from link to link, the border of the active link will be highlighted. You may choose the colour in which the link will be highlighted here.

3 Width of Scroll Bar (16pixel)

You can setup the width of the scroll bar. These scroll bars are displayed automatically if there is any image that cannot be contained in just one browser screen. There are two scroll bars. One at the bottom and one located to the right of your browser screen. If you choose a larger number the width of the scroll bar will be wider.

4 Delete Scroll Knob Automatically (No, Yes)

Select whether the knob is displayed on the scroll bar of the list box and text box.



Get Started!

5 Scroll button (No, Yes)

Select whether the scroll button (a triangular button) is displayed at the top and bottom, or the right and left of the scroll bar, or not displayed at all.

6 Border Width on Link Image (4 pixel)

This is to set the width of the border of the active link.

7 Height Between Lines (0 pixel)

Setup a height between lines of the text. To make the text more readable, you may want to increase the height between lines.

8 Color Burst Adjustment

Due to different TV makes, this option has been added so as to customize the colour of TVsurf applications to match your TV colour resolution. The left button decreases colour intensity and the right button increases colour intensity. The centre button returns the colour to TVsurf default settings.

9 Clipboard (No, Yes)

Select whether the clipboard is used or not. This will be available in the next version.

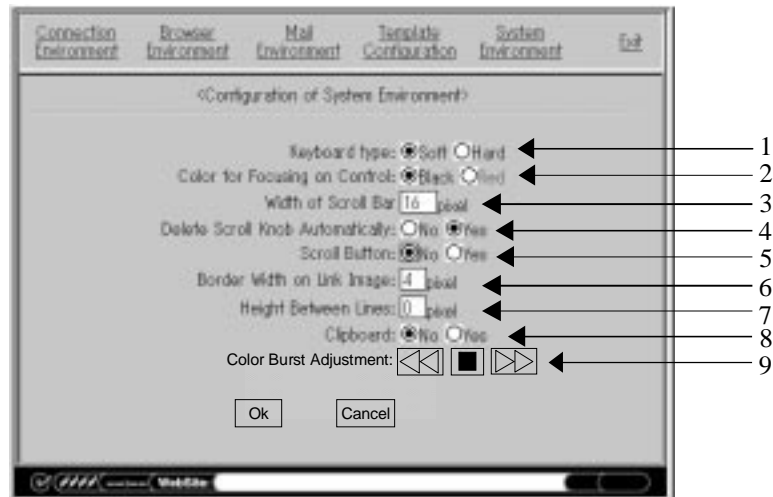


Figure 3-19 System Environment



3.9 Connecting to the Internet with TVsurf

After setting up your TVsurf (see section 3.8), you may begin surfing the Internet!



Quick Note:

Remember to set your Video Settings (see section 3.4) correctly before starting to surf the Internet.

When you switch TVsurf on, you will enter a front page (see Figure 3-20). This front page works like a web page. Click on other links to find out about TVsurf and the makers of TVsurf. If you want to immediately start the browser and email application, Jump to a desired website.



Figure 3-20 Front Page

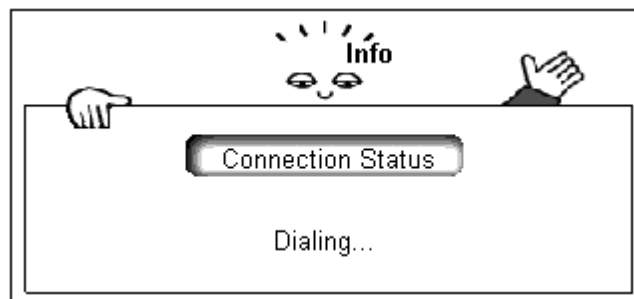


Figure 3-21 Connection screen



Get Started!

If you have configured your Internet Service Provider (ISP) information correctly, connection to the ISP would be made automatically when you try to access any web site (e.g. clicking on [Home] or [Jump] on the Browser Menu). When connecting, you will see the connection screen (Figure 3-21). For more information about how to use the TVsurf to surf the Internet, refer to Chapter 4 The Browser.



Note:

The [PG UP] and [PG DN] on the remote, or [Home], [PgUp], [PgDn] and [End] on the keyboard will only function when there is a web page on the screen. If you activate the functions stated above, TVsurf will scroll along the current page. This may cause problems when there is no web page displayed.





MY NOTES:





Chapter 4 The Browser

4.1 Outline

The following pages describe how to use the TVsurf to start exploring the Internet and to write or receive email. Many illustrations are provided to give you a clear and concise explanation on how to surf the Internet with TVsurf. TVsurf uses NetFront™ browser and email application from Access Co., Ltd.



Note:

Make sure to configure TVsurf properly with your ISP information before connecting to the Internet. However, if you have already setup the information but still unable to connect to the Internet, please refer to the Appendix for a Troubleshooting Guide.



Figure 4-1 Using the TVsurf Browser to surf the Internet



4.2 Browser screen

The following is an example of a home page which has 2 frames displayed by the browser. You may switch to the desired frame by using the [Frame] button on the remote control or keyboard. Then use the [PgUp] and [PgDn] buttons to scroll accordingly.

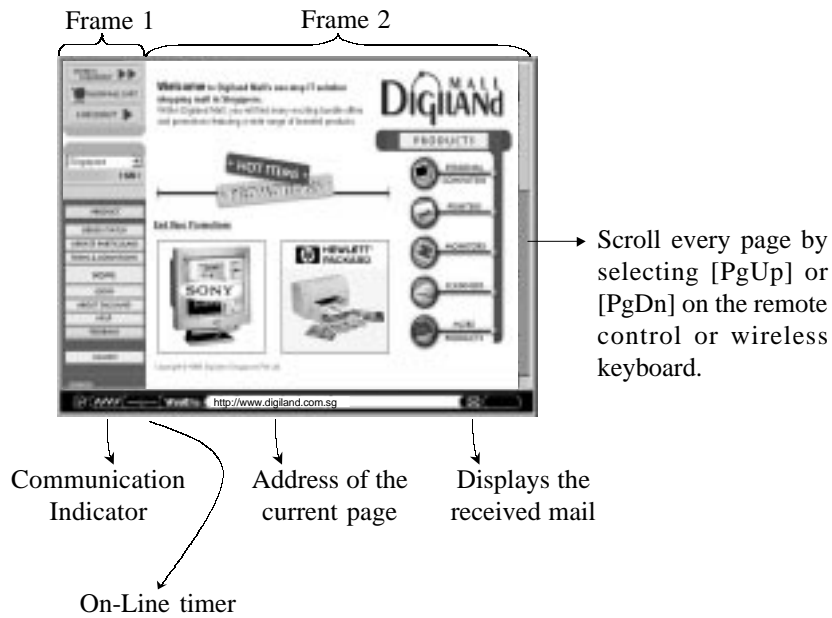
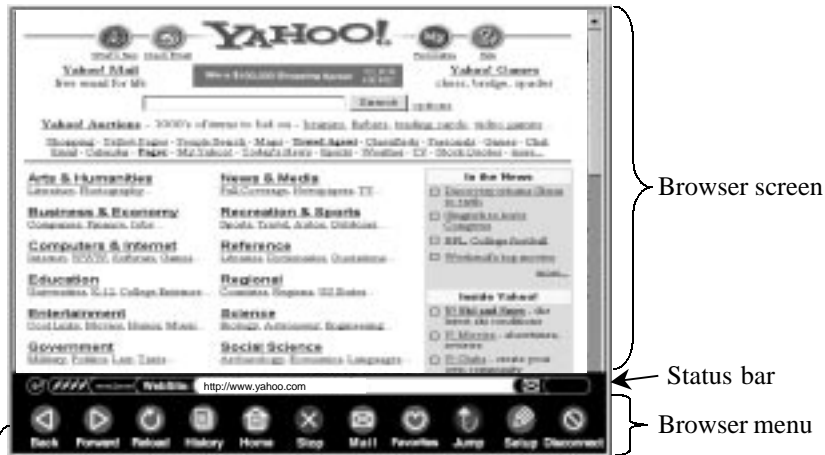


Figure 4-2 Internet Application

4.3 Browser menu

Here is an outline of the browser menu.



Displays a list of sites which you have previously visited. Select from this list and jump to the desired URL. See section 4.5.1.

Switches to the mail function screen. See Chapter 5 Mail Operation.

This menu bar will be terminated when [ESC] button, [Menu] button or [Menu/Input] key is pressed.

Switches to setup screen, such as connection, browser and mail. See Section 3.8.

Displays the dialog box for URL input. Jumps to the designated page. See Section 4.5.4.

Displays a list of your favorite pages. If you want to add any pages to this list, you can register it here. See section 4.5.3.

Figure 4-3 The Browser Menu



To display the browser menu

Press the [Menu/Input] key on the keyboard or press the [Menu] button on the remote control.

To terminate the menu

Browser menu will be terminated when the [ESC] button, [Menu] button or [Menu/Input] key is pressed.

To select an item

Move the focus with the left or right arrow buttons, and select the item using the [GO] button or [ENTER] key.

If the menu is displayed again, the focus is on the item which was selected previously. If the menu is terminated without selection, that item is not memorized.

Functions on the menu

1		Back
2		Forward
3		Reload
4		History
5		Home
6		Stop
7		Mail
8		Favorites
9		Jump
10		Setup
11		Disconnect

Table 4-1 Functions on the Menu



4.3 Control

4.3.1 Scheme

TVsurf can support the following schemes and protocols for obtaining information.

http:

Information of WWW server's resource on the Internet.

mailto:

Switch to the screen of an outgoing mail which includes the receiver's address automatically.

4.3.2 Scroll

There are several scrolling methods available.

You may scroll page by page using [PgUp] and [PgDn] on either the remote control or wireless keyboard.



Note:

Scrolling is done automatically when the focus is moved by the up/down arrow key and moved out from indicated screen. When the browser is not able to display the entire horizontal scope of a particular image or table, a horizontal scroll bar appears automatically at the bottom of the screen or the table.

4.3.3 Move and select the focus

The focus is shown by a coloured stick or underline. Move with the arrow keys on either the remote control or the keyboard. Page scrolling is done automatically. Selection is made by the [Enter] key or [Go] button.

4.3.4 Form

To enter data in the "entry form" of the displayed page, make sure the form is highlighted then either use your remote control, keyboard or the soft keyboard and press the [GO] button, [Enter] key on the selected form. You may then key in the required text. The soft keyboard will be displayed automatically if "soft" is selected in the environment setup menu. Please see "4.4 Entry of Characters" for operation.



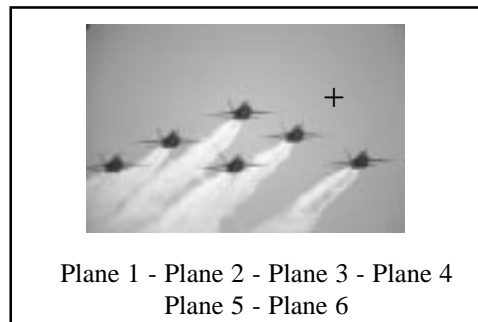


4.3.5 Switching frames

In order to switch between frames, use the [Frame] button on the remote control or [Frame] hotkey on your keyboard. This would let you switch focus between frames. The current frame that is in focus would be highlighted.

4.3.6 Clickable map

Clickable map allows you to select a control in the image such as a map/image. When the focus is on the image, the frame will turn bold as with the usual image. A cross cursor is displayed in the middle of the focus when the [GO] button or [Enter] key is pressed and the cursor can be moved by the arrow keys. The focus is cancelled when [ESC] is pushed. In order to activate the control function, press the [GO] button or [Enter] key when the focus is on the desired position.





4.3.7 Sound Files

You may download sound files if the file is in "wav" format. The audio data will be downloaded automatically when the file is selected. This operation can be cancelled during downloading. When the downloading is complete, the playback dialog box is displayed.



Figure 4-4 Sound Files





4.3.8 User Authentication

Some site may require authentication before you are able to access it. When viewing a secure site, a user authentication dialog box is displayed and a user name and password will be requested. You may have to register with the site to get your user name and password.

The site can be visited if the user authentication is successful. If not, an error message is displayed and the browser will return to the previous page.

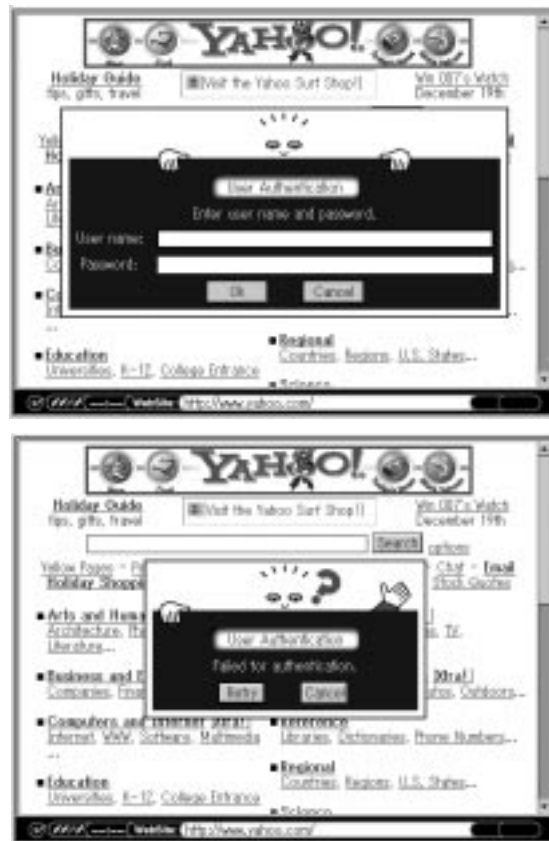


Figure 4-5 User Authentication



4.4 Entry of Characters

4.4.1 Supported Functions

- 1 Alphabets, Numbers
- 2 Symbols
- 3 Template (Please refer to section "3.8.4 Template Configuration")

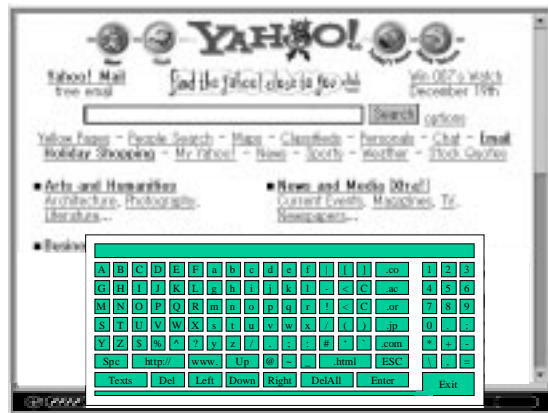


Figure 4-6 Entry of Characters

If you are using the soft keyboard, scroll to the box on the web page in which you have to enter the information and press [Go] on the remote control. The soft keyboard appears and you may enter the necessary information in the text box. Select [Exit] to confirm your entry or press the [ESC] button on the remote control to cancel.

If you are using the wireless keyboard, scroll to the box on the web page in which you have to enter the information and press [Enter]. A text box appears at the bottom of the browser screen. You may then use the wireless keyboard to necessary information. Press [Menu/Input] to confirm your entry or the [ESC] key to cancel.



Note:

When using the wireless keyboard to enter information in the Browser and Mail Application, press [ESC] to cancel or [Menu/Input] to confirm what you have keyed in and go to the previous screen.



4.4.2 Template

Enter a template into the form by using the soft keyboard [Texts] key. Refer to section 3.8.4 on how to register templates.

Using Templates

When using the soft keyboard, press [Texts] to get to the Template menu. From here, select the Template you want to use and then select [OK] to confirm your choice. The text appears in the text box in the soft keyboard.



Figure 4-7 Entry of Characters - Template



4.5 Browser Functions

Following functions are provided by the browser menu.

Operation












	Back	Returns to the previous page.
	Forward	Goes to the next page.
	Reload	Reloads or refreshes the current page. You may want to use this option when you wish to see the latest updated page since you visited it within the current surfing session.
	History	Shows the history of URL visited since starting up the browser. A page can be selected from this list and shown again. Please refer to “4.5.1 Selecting a page from history” for details.
	Home	Jumps to the registered URL.
	Stop	Stops loading a page.
	Mail	Switches to the mail screen (see section 4.5.2).
	Favorites	Stores the information of favourite homepages. Please refer to “4.5.3 Favourites” for details.
	Jump	Jumps to a specific URL. Please refer to “4.5.4 Jump” for details.
	Setup	For setting up connection, browser and mail.
	Disconnect	Terminates the connection. You may want to disconnect to save online time eg. when reading information from a web page. You may reconnect when you finish when you jump to the next page, type in a new URL or select a page from History..

Table 4-2 Browser Functions



4.5.1 Selecting a page from history

Displays the list of titles and URLs of the currently viewed pages. URL at the top of the list is selected as default. Selection can be made with the arrow keys.



Figure 4-8 Selecting a page from history

4.5.2 Mail

Switches to the mail function screen. Goes back to the previous browser screen when [Return] is pressed. Please refer to "Chapter 5 Mail Operation" for more information.



Figure 4-9 Mail Function Screen



4.5.3 Favorites

You can bookmark your favorite pages here. This is used to display and register the title and the URL of the current page, and to jump, delete or change the title of the registered URL. The newly registered titles will be added to the top of the list.



Figure 4-10 Favorites

Operation

Jump	Chooses a registered URL on the list and loads the URL. Connects the line if URL is on the Internet.
Delete	Deletes a registered URL.
Change Title	Changes the title of a registered URL. The dialog box for changing the title is displayed.
End	Exits from the current dialog box.
Register	Registers the title and URL which is currently shown. You may want to refer to section 4.5.3.1.

When you want to exit, press the [Tab] key on the keyboard and scroll to the [End] selection or you can just press the [ESC] button/key and the focus will go to the [End] selection. Then press the [GO] button or the [Enter] key.





4.5.3.1 Select Page/Register: Change Title

Changes the titles of the pre-registered URL in the Favorites list.



Figure 4-11 Change Title of URLs

Operation

Change	Puts the change in effect.
Cancel	Closes the dialog box.

A new title can be entered by moving the focus on the title and pressing [GO] button or [Enter] key.





4.5.4 Jump

Select this option if you want to jump to a desired web site. A dialog for making direct URL (<http://www...>) entry is available. After typing the URL, press [Exit] when using the soft keyboard or [Menu/Input] on the wireless keyboard to jump to the URL.

If you have changed your mind about going to that particular web site and want to remain on the current web page, press the [ESC] button/key to cancel the option.

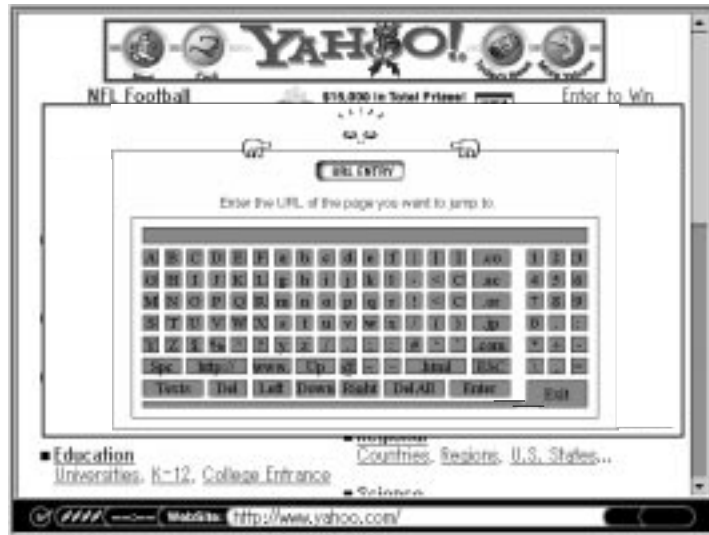


Figure 4-12 Jump





MY NOTES:



Chapter 5

Mail Operation

5.1 Outline

Connection of TVsurf to the mail server is made when a user selects the send or receive command. After receiving/sending mails, disconnection is made automatically so users can read/write off-line.

TVsurf uses the protocols SMTP and POP3 for sending and receiving mail. By selecting Mail in the menu bar, the mail menu appears which includes Write, New, Received, Sent, Address, Attach Data List and Mail List at Server.



Figure 5-1 Mail Operation



Quick Note:

Make sure to setup your mail environment before sending or receiving email. Please refer to section 3.8.3 on Page 3-14 on instructions to setup TVsurf to send and receive email.

5.2 Writing a mail

You may begin writing a new mail by selecting the Write option on the mail menu. When you want to manually key in addresses or write a mail, press [GO] button or the [Enter] key and a text box will appear. Type in the addresses or message. Pressing the [Menu/Input] key on the wireless keyboard or [Exit] on the software keyboard will confirm entry and get back to the mail screen. Refer to section "5.8 Sending a mail" for more details.

5.3 Receiving a mail

5.3.1 Mail listing

By selecting New or Received, the list of new or received mails appears. When New is selected, new mails are downloaded from the server.

Columns

Icons for unread mail, name of sender, date and time mail was sent, and titles are indicated.

Order of mail

The mail received most recently is shown at the top. When the listing of the mail is more than what the screen allows, the [Next] button appears and the next page can be accessed by selecting that button.

Deletion of mail

A mail can be deleted from the listing. By checking the Delete box and clicking the [Delete] button, checked mail will be deleted all together. If all the mail should be deleted, select the [Delete_All] button.

Mail Operation



Figure 5-2a Mail Listing - First Screen



Figure 5-2b Mail Listing - Second Screen



5.3.2 Received mail

This section describes what you would see in the received mail screen. (With reference to the Figure 5-3 found on the next page).

1 Columns

“From”, “CC”, “Title”, and “Message” are indicated.

2 Attach

Appears if there is an attached file. (Refer to section 5.3).

3 MENU

Goes back to the first screen.

4 Previous

The previous mail appears.

5 Next

The next mail appears.

6 Add_Address

You may add the sender's email address to your address book. Refer to section 5.4 and 5.8.8 for more details.

7 Delete

Deletes the current mail.

8 Reply

To reply to the sender of the current email. Refer to section 5.8.6.

9 Forward

To forward to current email to other people. Refer to section 5.8.7.

10 Return

Returns to the Mail Main Menu





Mail Operation

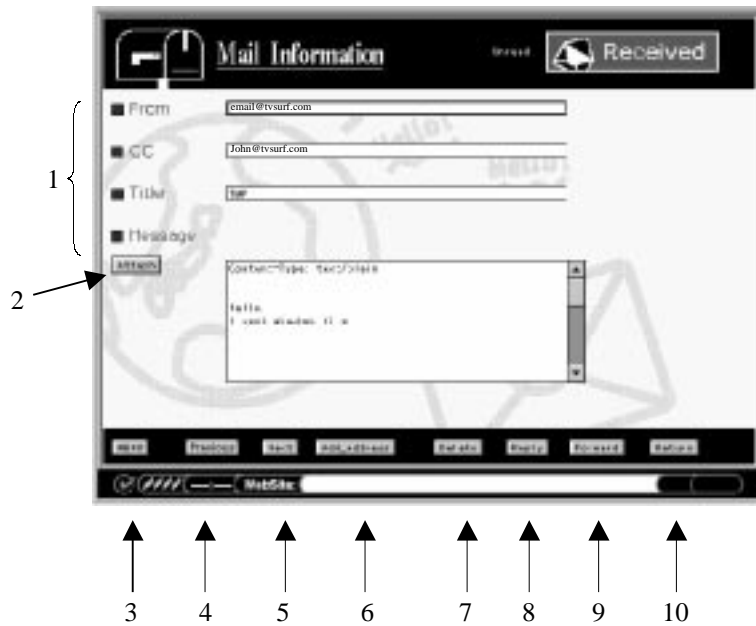


Figure 5-3 Received Mail

5.4 Attached file

You may view attached files upon opening an email which includes the attachment and clicking the Attach button (refer to Figure 5-3), or clicking the Attach Data List option found at the below the 5 mail options in the Mail Main Menu.

Among available attached files, text and HTML file appears as the body of the message, and GIF and WAV files are shown in the attached data list when the "Attach" button is selected. An attached file can be opened by selecting it in the list. If other types of files (that are not supported by TVsurf) are attached, it would be listed but cannot be selected.





5.4.1 GIF File

Select the file to display the picture. Selecting [Return] allows you to go back to the attached data list.

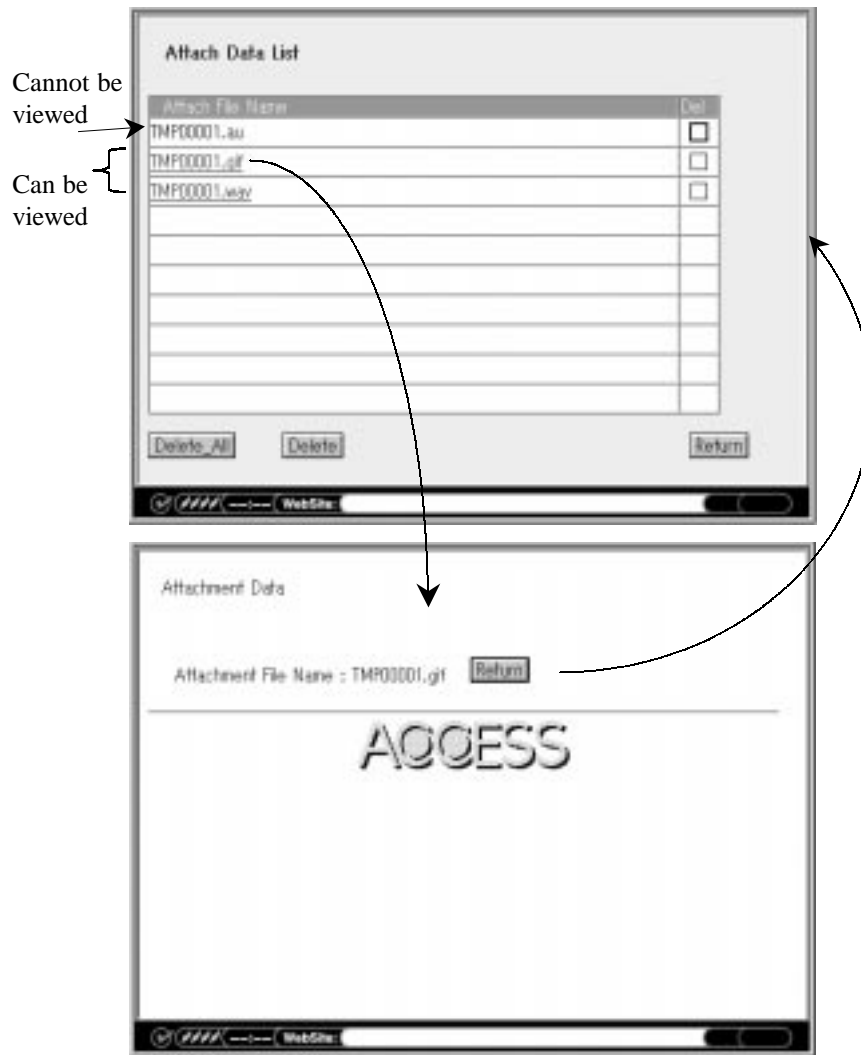


Figure 5-4a Attached File - GIF File





Mail Operation

5.4.2 WAV File

Select the file to play the sound. [End] allows you to go back to the attached data list.



Figure 5-4b Attached File - "Wav" File

5.5 Saving addresses

An address can be added to the address book from the received message. Sender, To, CC are indicated in order. Check the Add box, and the address is added at the end of the book.

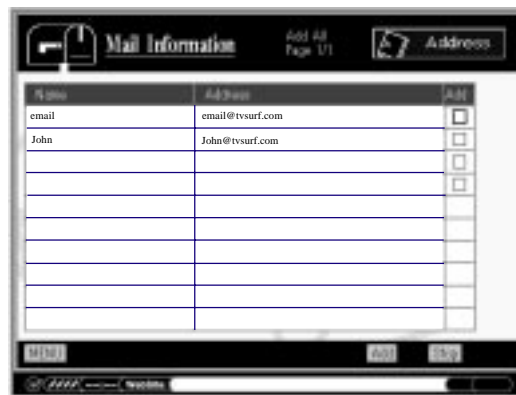


Figure 5-5 Saving Addresses



5.6 Automatic checking for new mails

After connecting to the Internet, TVsurf checks for new mail in the background at a specified interval and indicates the arrival of new mail with a blinking icon.



Mail arrival icon

Figure 5-6 Automatic Mail Checking

5.7 Saving a mail

The received mail is saved locally in TVsurf so reading and writing can be done off-line. No more than 30 pieces of mail can be received, and, in that case, reception is stopped and a warning will appear. You will then be required to delete unwanted email so as to receive new email. A mail larger than 30 KB is received after deleting the oversized portion.



5.8 Sending an email

5.8.1 Entry of an address

Entry to the To and CC columns can be done by either keying in the addresses directly in the text box when you press [Enter] or selecting them from the address book.

By selecting [Address], the address list appears. Select an address and click on [Cite]. Additional address can be entered by placing a comma after the previous address. For easy operation, focus stays in the address book after the entry. Go back to the message screen by [Cancel]. Press [Send] to send mail and [Hold] or [Stop] otherwise.



Figure 5-7 Sending a mail - Entry of an address





5.8.2 Template

Any number of template sentences can be selected from template list when the software keyboard's [text] button is selected. Entry of characters can also be made with the soft keyboard.

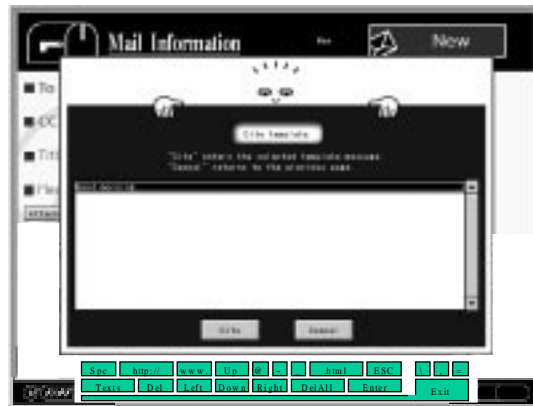


Figure 5-8 Template

5.8.3 Attach a file

The file that came attached to a received mail can be attached to a new mail you want to send. Press the [Attach] button, go to the attached file list, choose a file and select the [Attach] button again.



Figure 5-9 Attach a File



Mail Operation

5.8.4 Saving a mail sent

A sent mail is saved in the sent mail list. Latest mail is shown on the top of the list. An old mail can be resent as a new mail. Re-sending a mail that could not be sent because of a send error can also be done.

The sent mail list appears by selecting the [Send] in the mail menu. The columns have icons for unsent mail, recipient's name and title. A mail can be deleted from the listing by checking the Delete box and clicking the [Delete] button, all the checked mail will be deleted together. If all the mail should be deleted, select the [Delete_All] button.

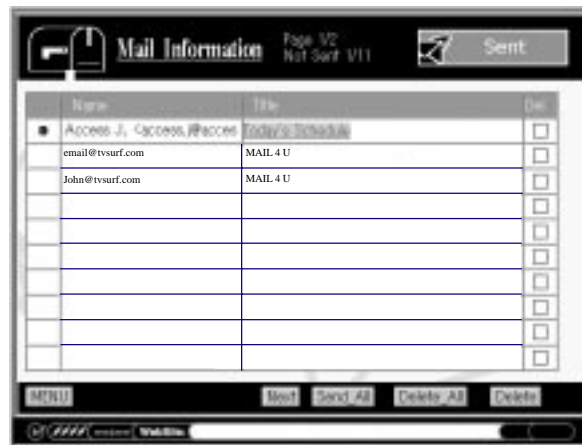


Figure 5-10 Saving a mail sent



5.8.5 Saving a mail not sent

To save a written mail without sending it, add it to the sent mail list by selecting [Hold]. All the held mail will be sent by selecting [Send_All].

5.8.6 Reply to a mail

By selecting [Reply] in the received mail screen, a Reply Mail screen appears with To, CC, Title and Message entries. ">" denotes the original message. "RE:" is added to the original title.

1. The reply is sent to the original sender.
2. Reply to a forwarded mail is sent to the sender who forwarded the original mail.



Figure 5-11 Reply Mail

5.8.7 Forward mail

Forwards the message. “>” is not added to each line. “Start of Forward Message” and “End of Forwarded Message” are added to the beginning and the end of the cited message. “FW:” is added to the original title. To: column is originally empty.



Figure 5-12 Forward Mail

5.8.8 Address Book

An email address can be stored in the address book. An address can only be registered if its name is specified. Adding, editing and deleting of the addresses can be made.



Figure 5-13 Address Book



5.9 Attach Data List

This is a list of attachments currently stored in TVsurf will be displayed. This is the same list that appears when you want to add an attachment to an email. You may view or delete any of the attachments here.

5.10 Mail List At Server

This is a list of the email which is currently stored on your ISP. If you do not find any email here, the reason would be that you have chosen not to have a copy of your mails stored in the ISP server. You may change this option in the Mail Environment Setup. Please refer to section 3.8.4 for more information.





My Favourite Pages

My Favourite Pages

1.	http://www.
2.	http://www.
3.	http://www.
4.	http://www.
5.	http://www.
6.	http://www.
7.	http://www.
8.	http://www.
9.	http://www.
10.	http://www.
11.	http://
12.	http://
13.	http://
14.	http://
15.	http://
16.	http://
17.	http://
18.	http://
19.	http://
20.	http://
21.	
22.	
23.	
24.	
25.	

