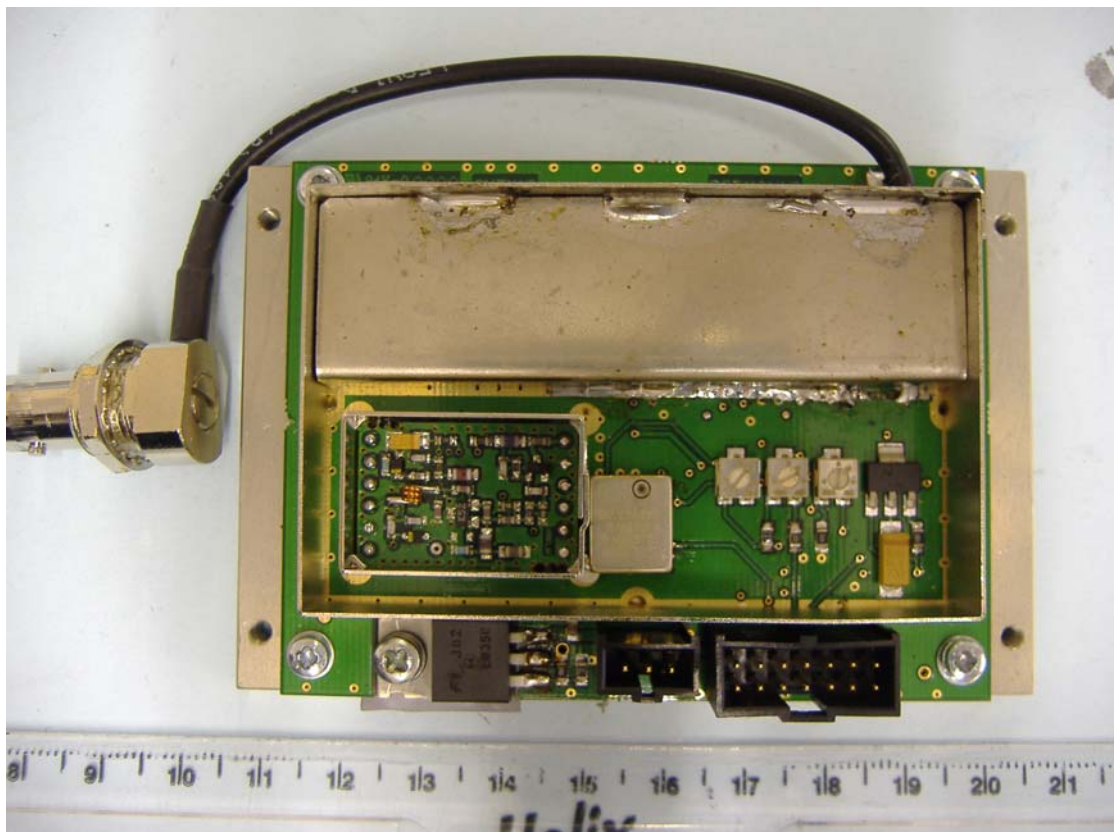
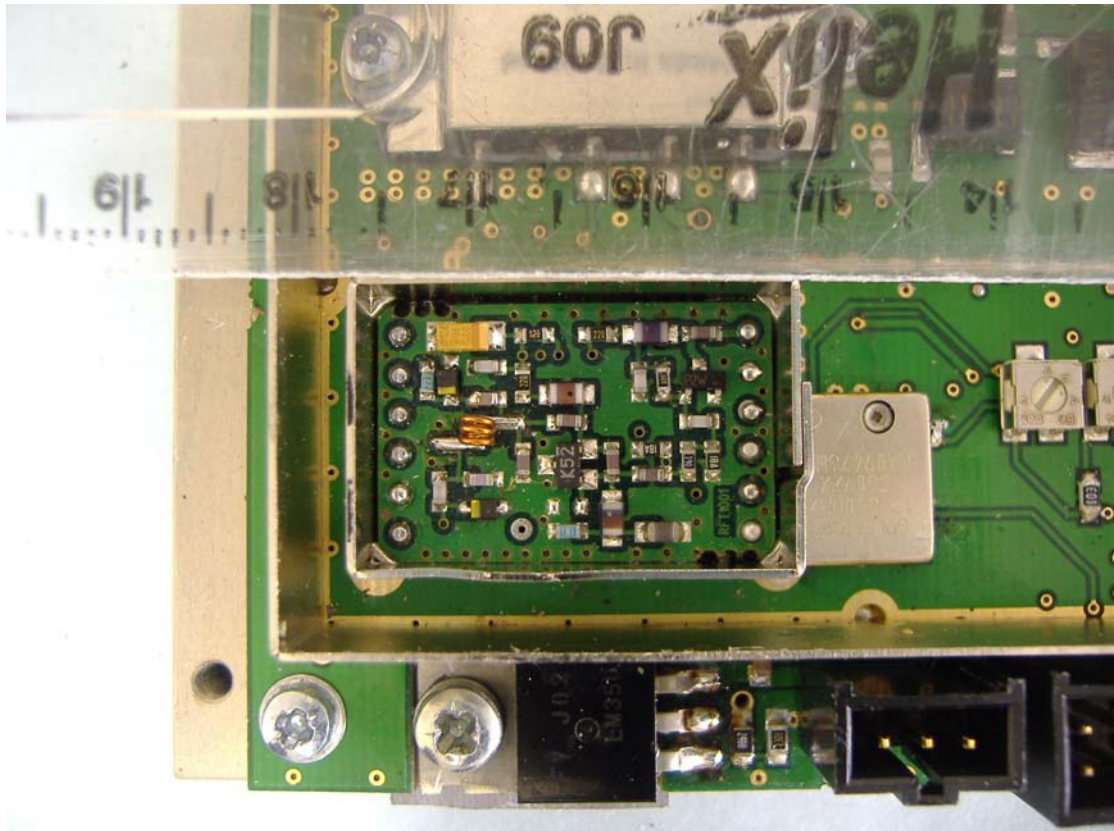


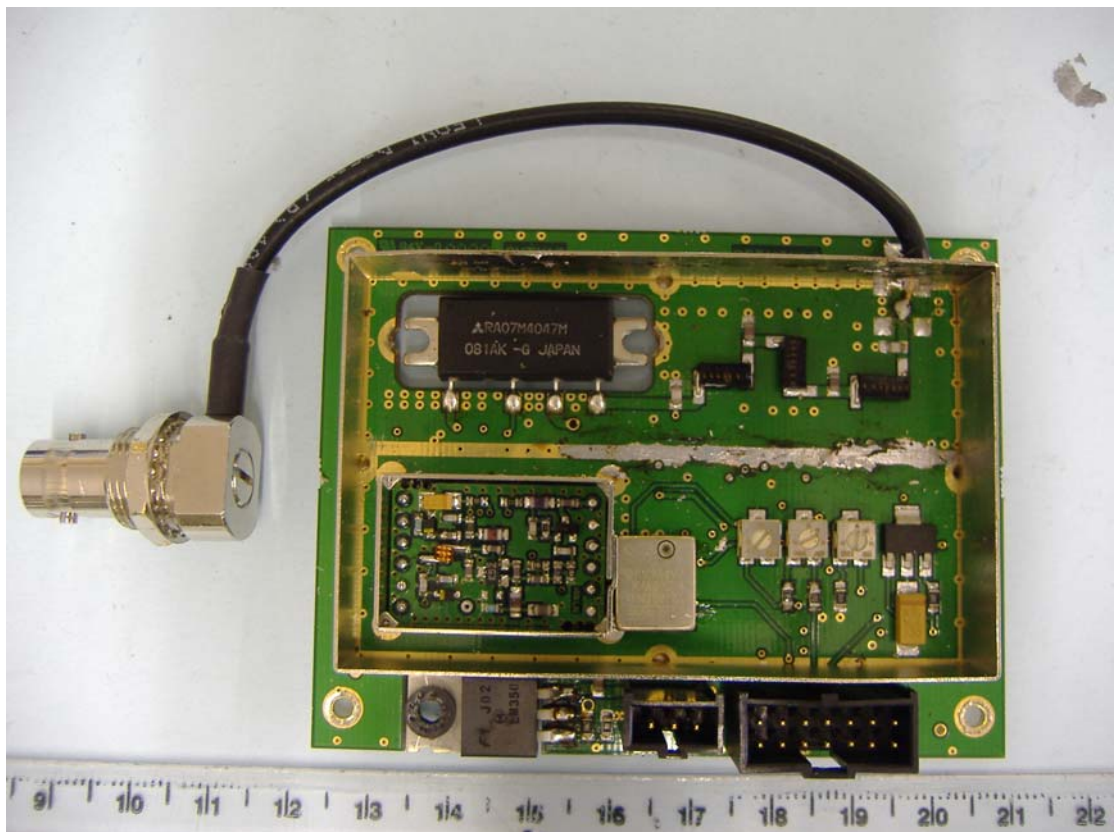
RF Module Top Can Removed



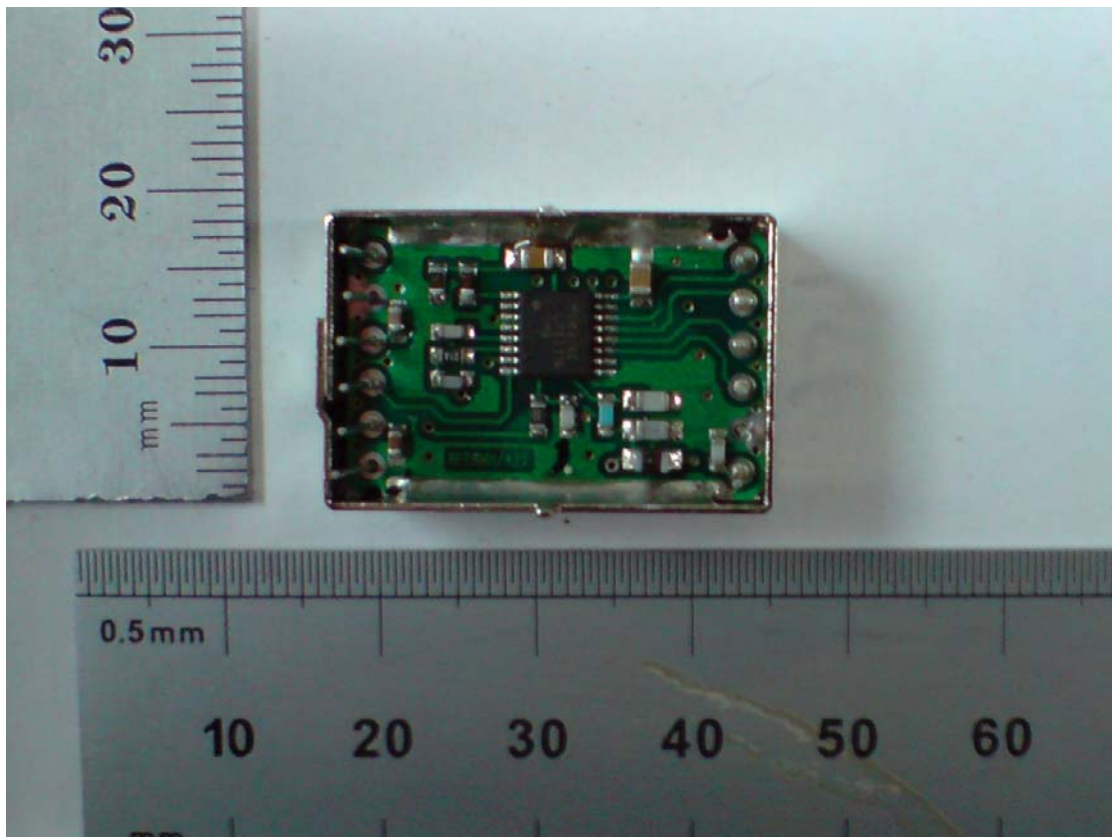
RF Module VCO Cover Removed



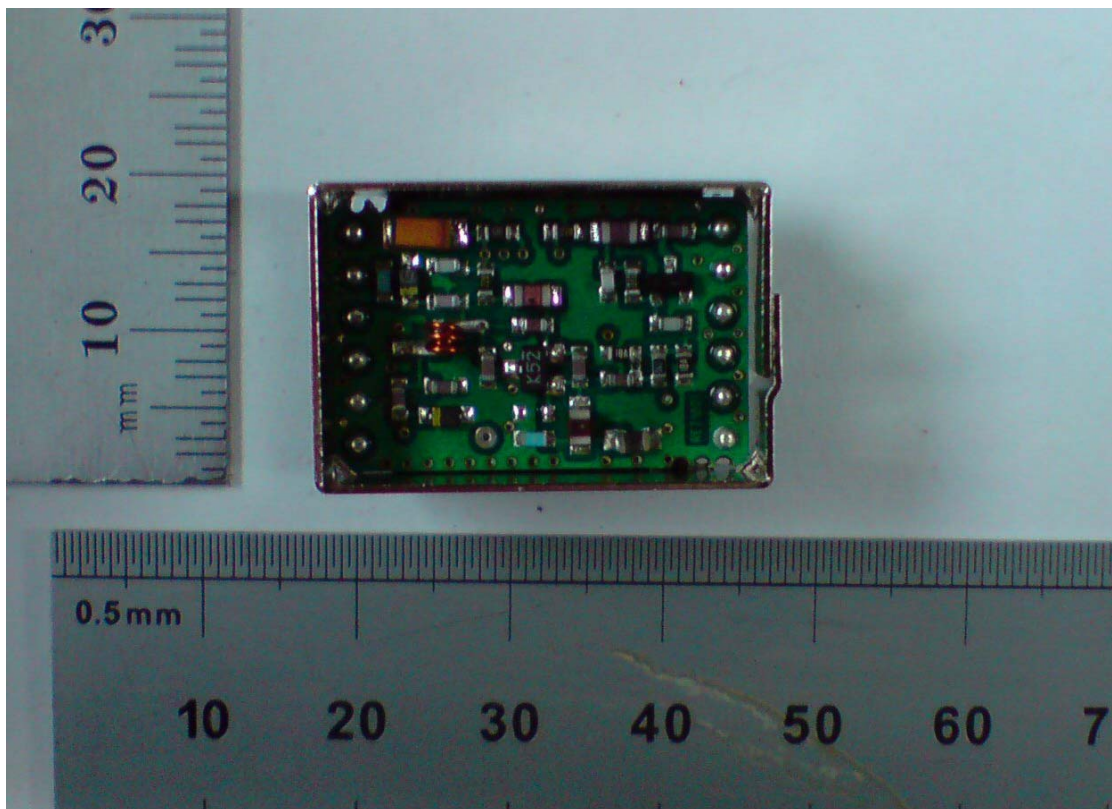
Close Up Of Mounted VCO Module



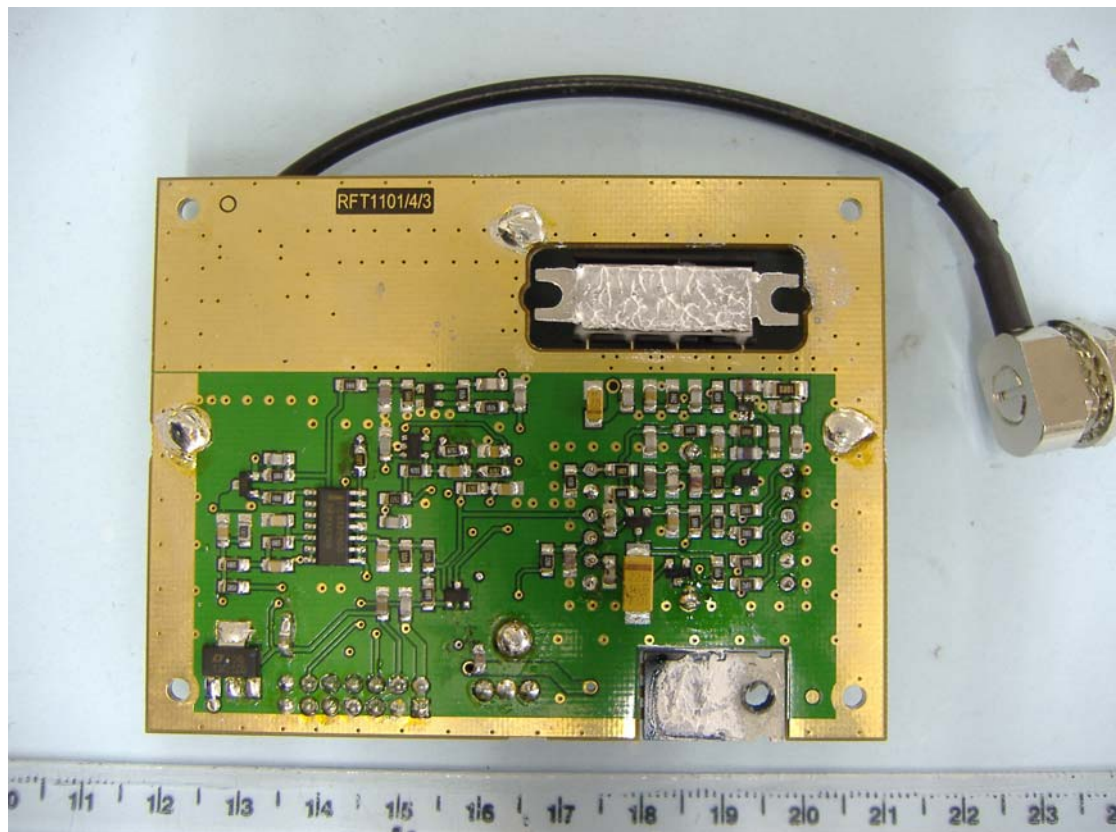
All Cans Removed



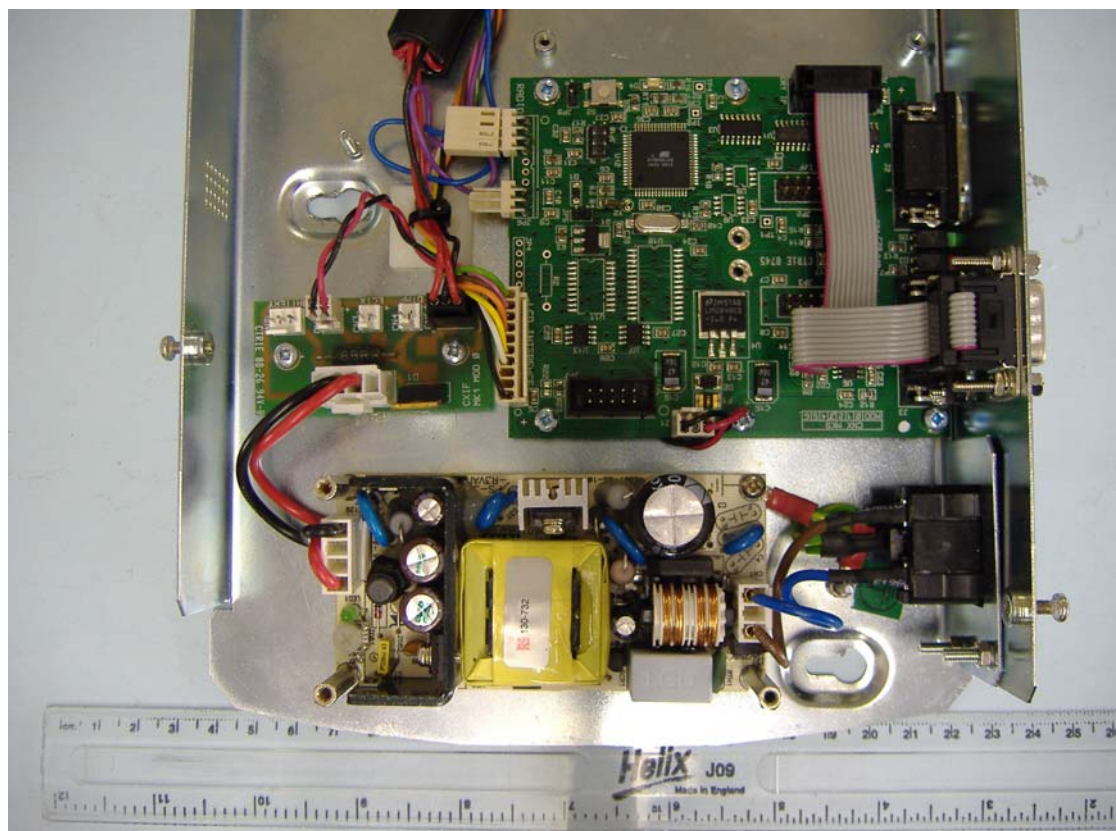
VCO PCB Bottom View



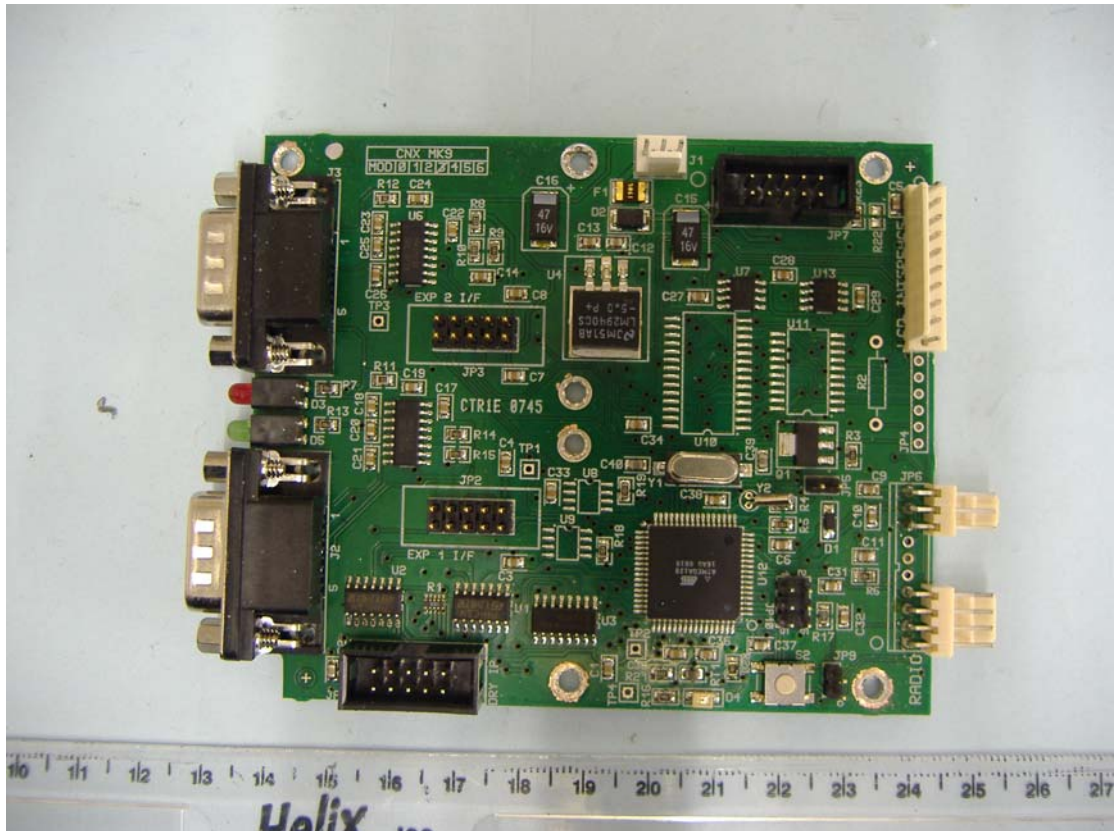
VCO PCB Top View



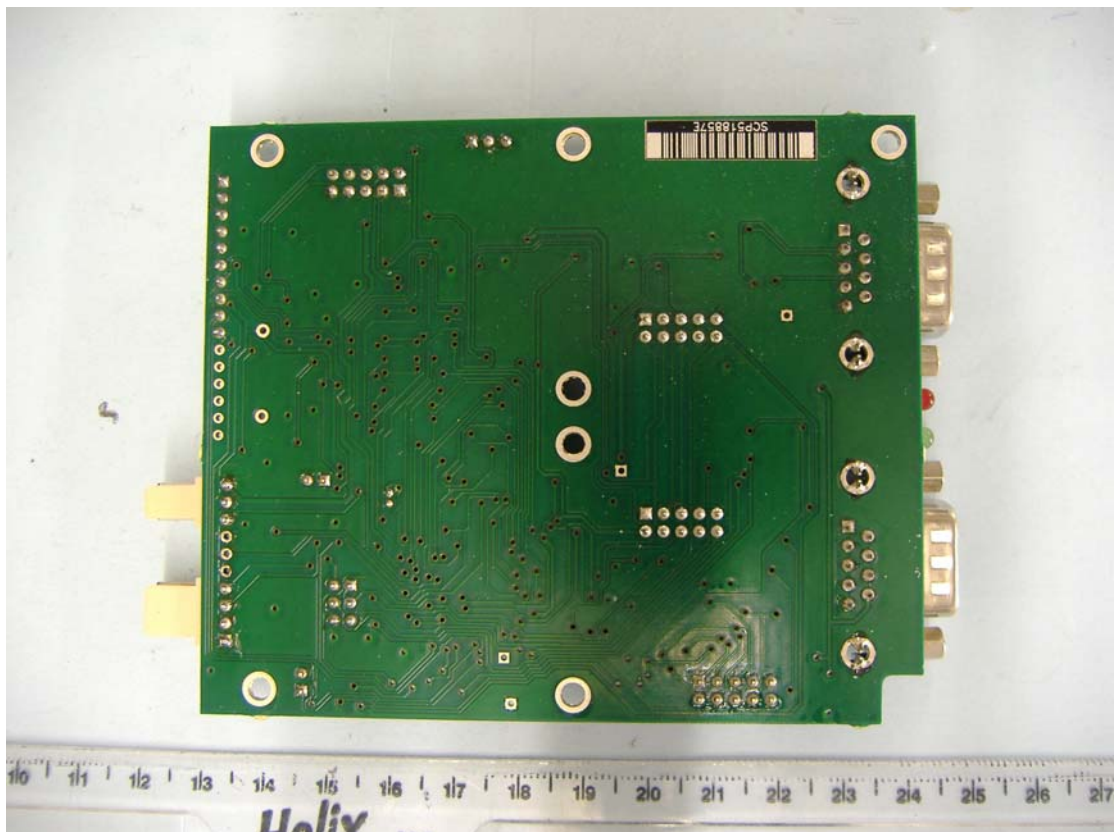
Rear Of RF Module Demounted Form Heatsink



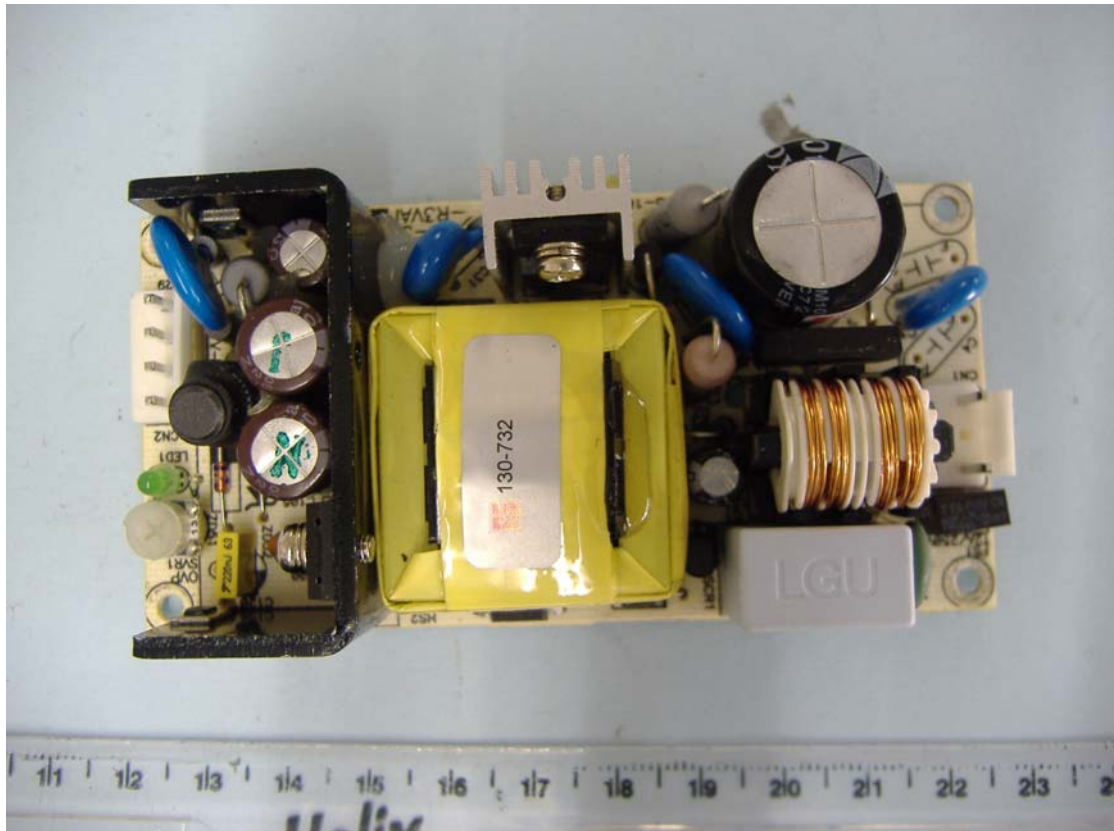
Interface and PSU PCBs Mounted In case



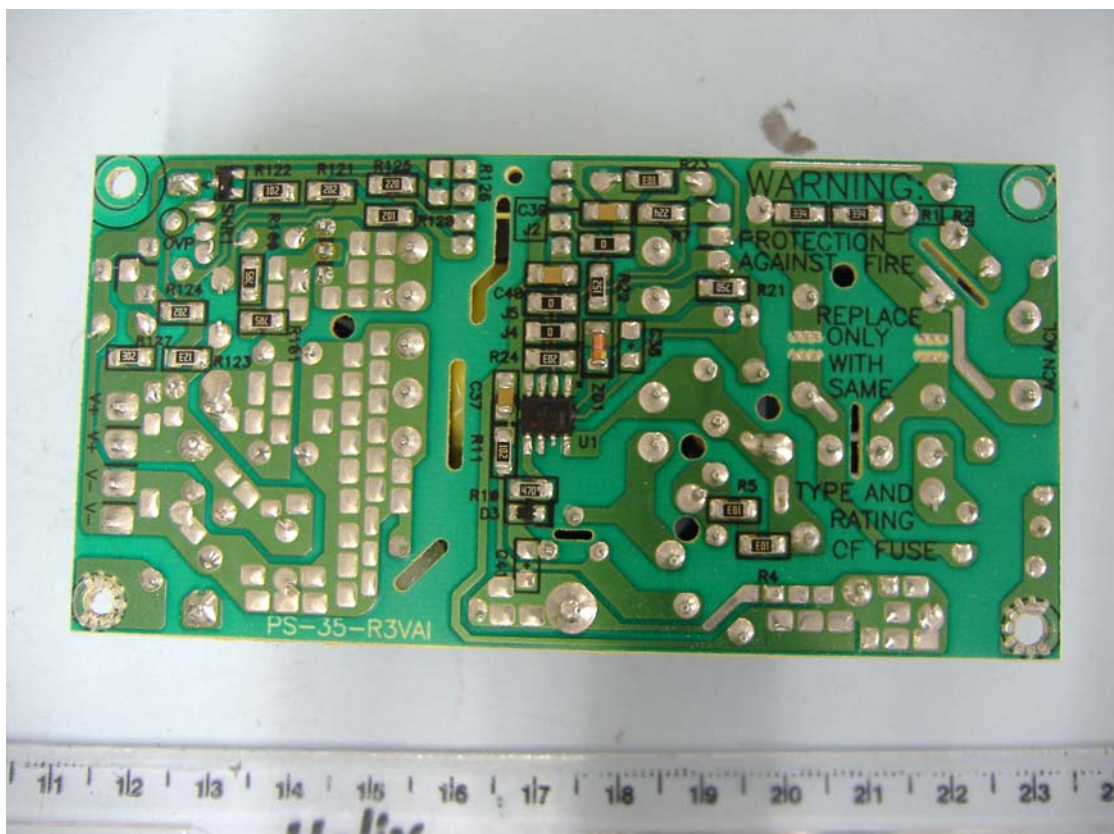
Interface PCB Component Side



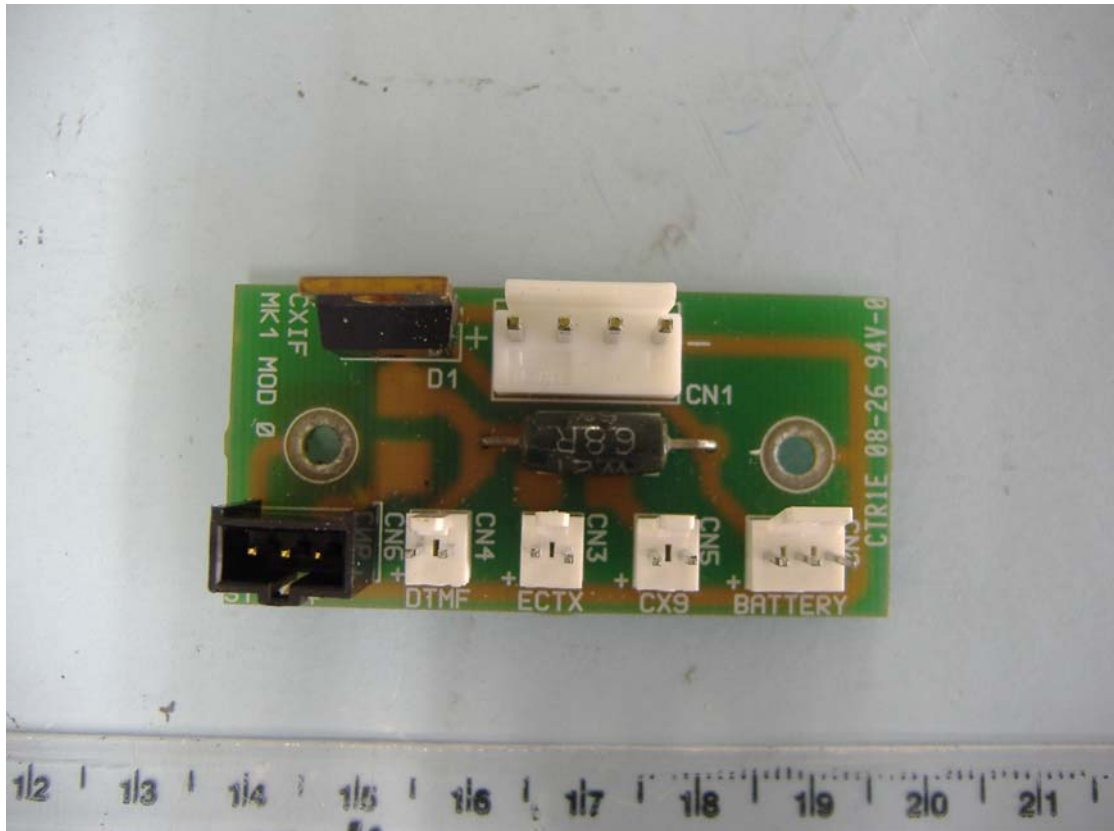
Interface PCB Track Side



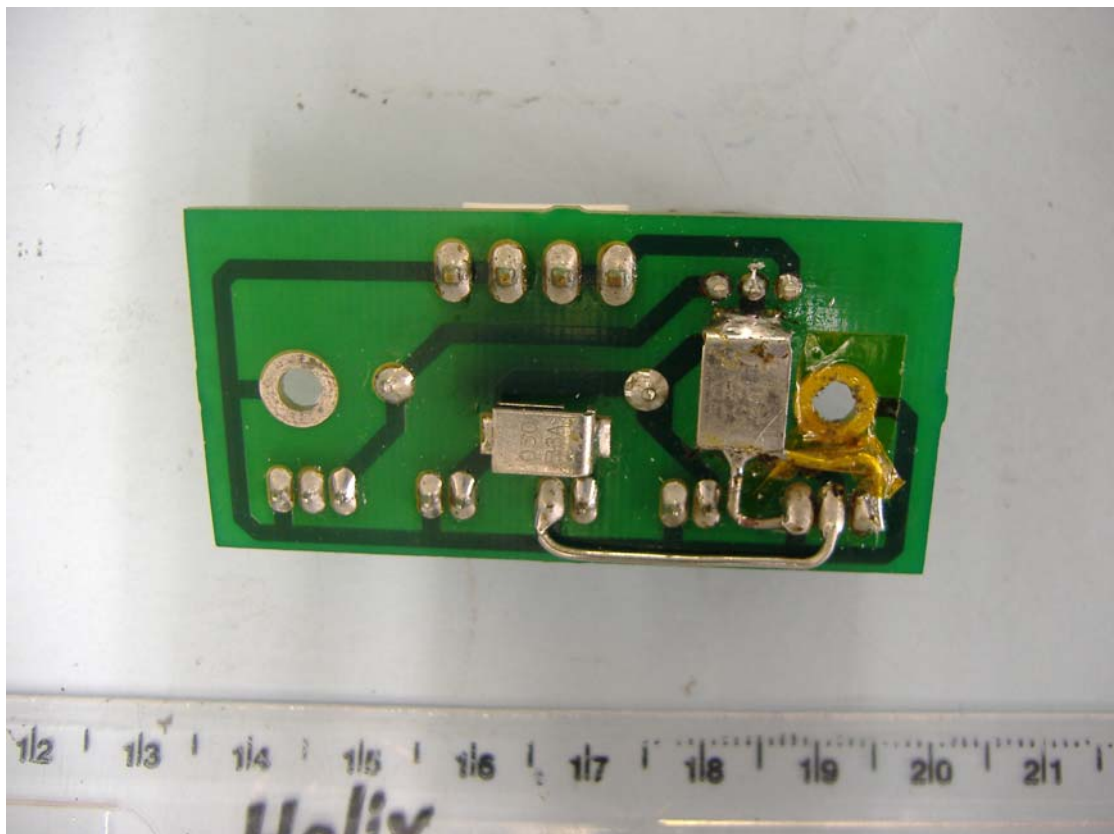
PSU PCB Component Side



PSU PCB Track Side



Power / Data Distribution PCB Component Side



Power / Data Distribution PCB Track Side