

Info

Number	802477A Application	Author	Alastair Malarky
Date	2019 09 09		
To	TUV SUD		

TRP-8100 – 802477A Internal Photographs

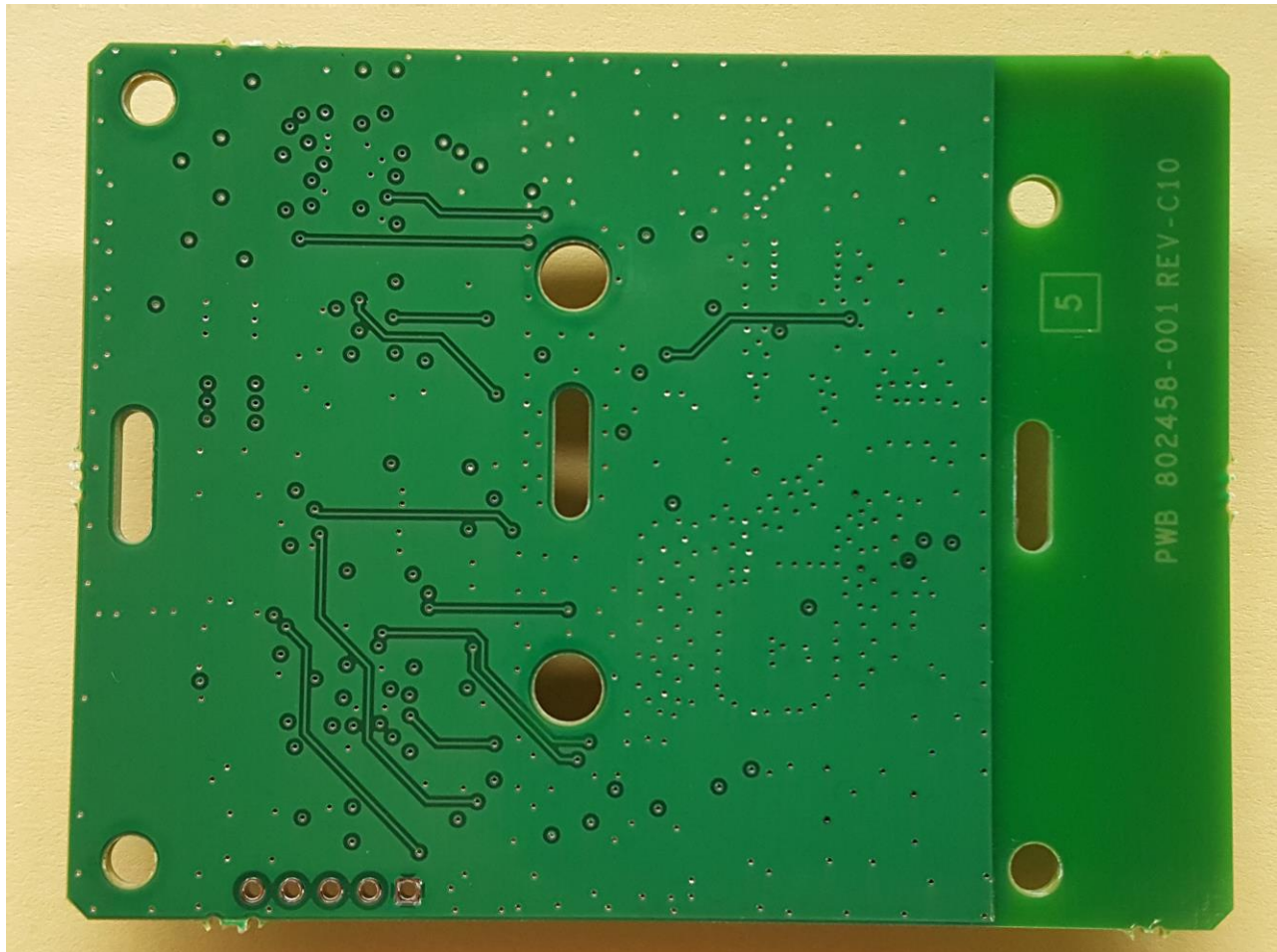
References: FCC ID: JQU802477A
IC: 2665A-802477A

The internal photographs of the model tested are shown below.

© 2019 Kapsch TrafficCom Canada Inc., all rights reserved.

These drawings and specifications contain confidential and proprietary information and are the property of Kapsch TrafficCom Canada Inc. and are issued in strict confidence and will be kept confidential and used solely for the purpose intended and for no other purpose and shall not be transmitted, reproduced, copied, and/or used as the basis for manufacture or sale of apparatus unless otherwise agreed to in writing by Kapsch TrafficCom Canada Inc.

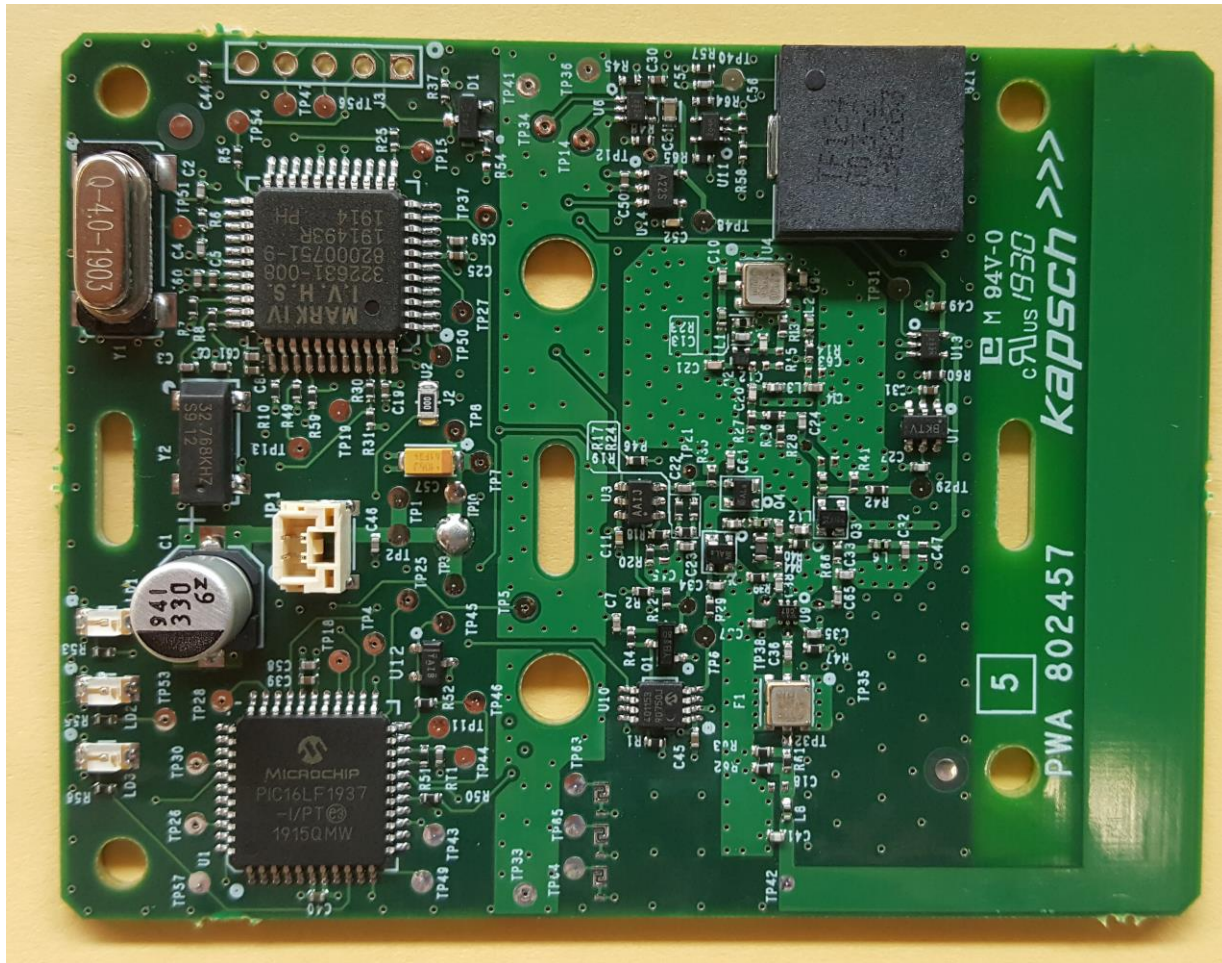
PWA Rear Photo – Model 802477A-TAB



© 2019 Kapsch TrafficCom Canada Inc., all rights reserved.

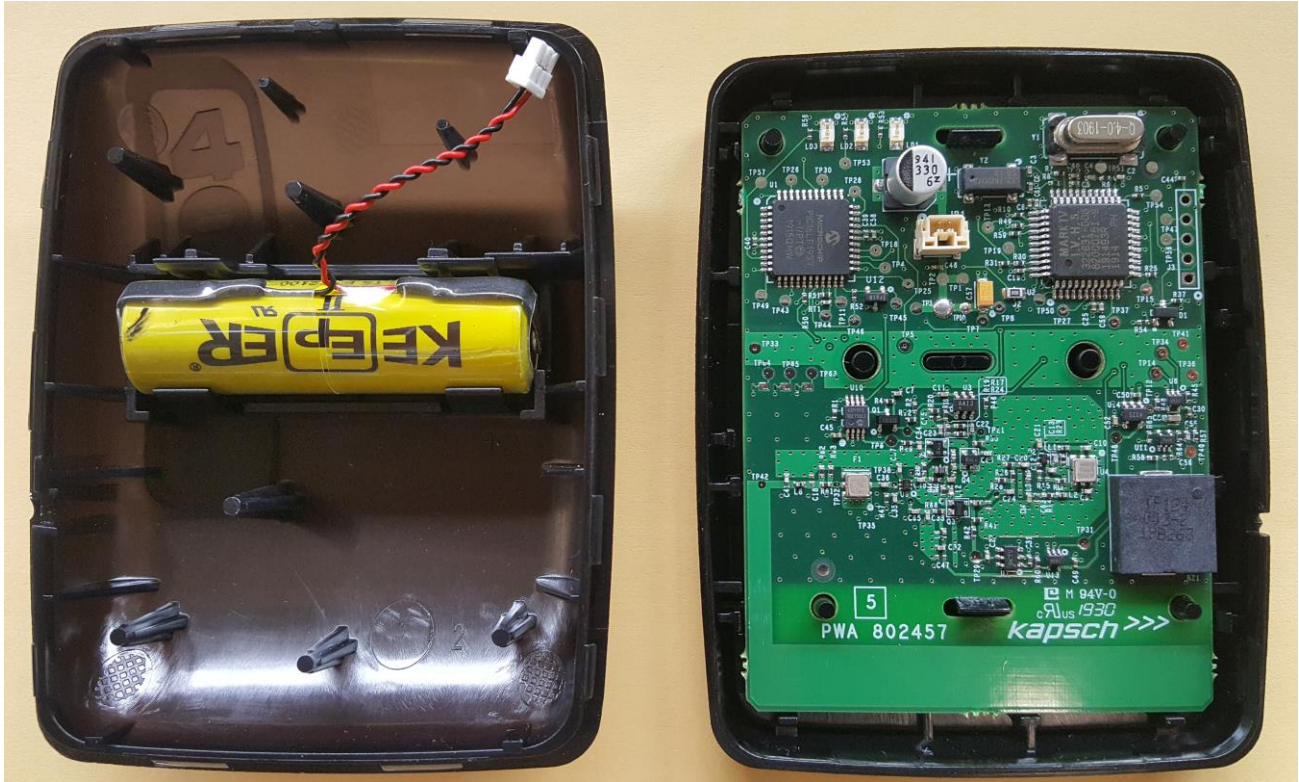
These drawings and specifications contain confidential and proprietary information and are the property of Kapsch TrafficCom Canada Inc. and are issued in strict confidence and will be kept confidential and used solely for the purpose intended and for no other purpose and shall not be transmitted, reproduced, copied, and/or used as the basis for manufacture or sale of apparatus unless otherwise agreed to in writing by Kapsch TrafficCom Canada Inc.

PWA Front Photo – Model 802477A-TAB



© 2019 Kapsch TrafficCom Canada Inc., all rights reserved.

These drawings and specifications contain confidential and proprietary information and are the property of Kapsch TrafficCom Canada Inc. and are issued in strict confidence and will be kept confidential and used solely for the purpose intended and for no other purpose and shall not be transmitted, reproduced, copied, and/or used as the basis for manufacture or sale of apparatus unless otherwise agreed in writing by Kapsch TrafficCom Canada Inc.

PCA in a Housing Photo – Model 802477A-TAB

© 2019 Kapsch TrafficCom Canada Inc., all rights reserved.

These drawings and specifications contain confidential and proprietary information and are the property of Kapsch TrafficCom Canada Inc. and are issued in strict confidence and will be kept confidential and used solely for the purpose intended and for no other purpose and shall not be transmitted, reproduced, copied, and/or used as the basis for manufacture or sale of apparatus unless otherwise agreed to in writing by Kapsch TrafficCom Canada Inc.