
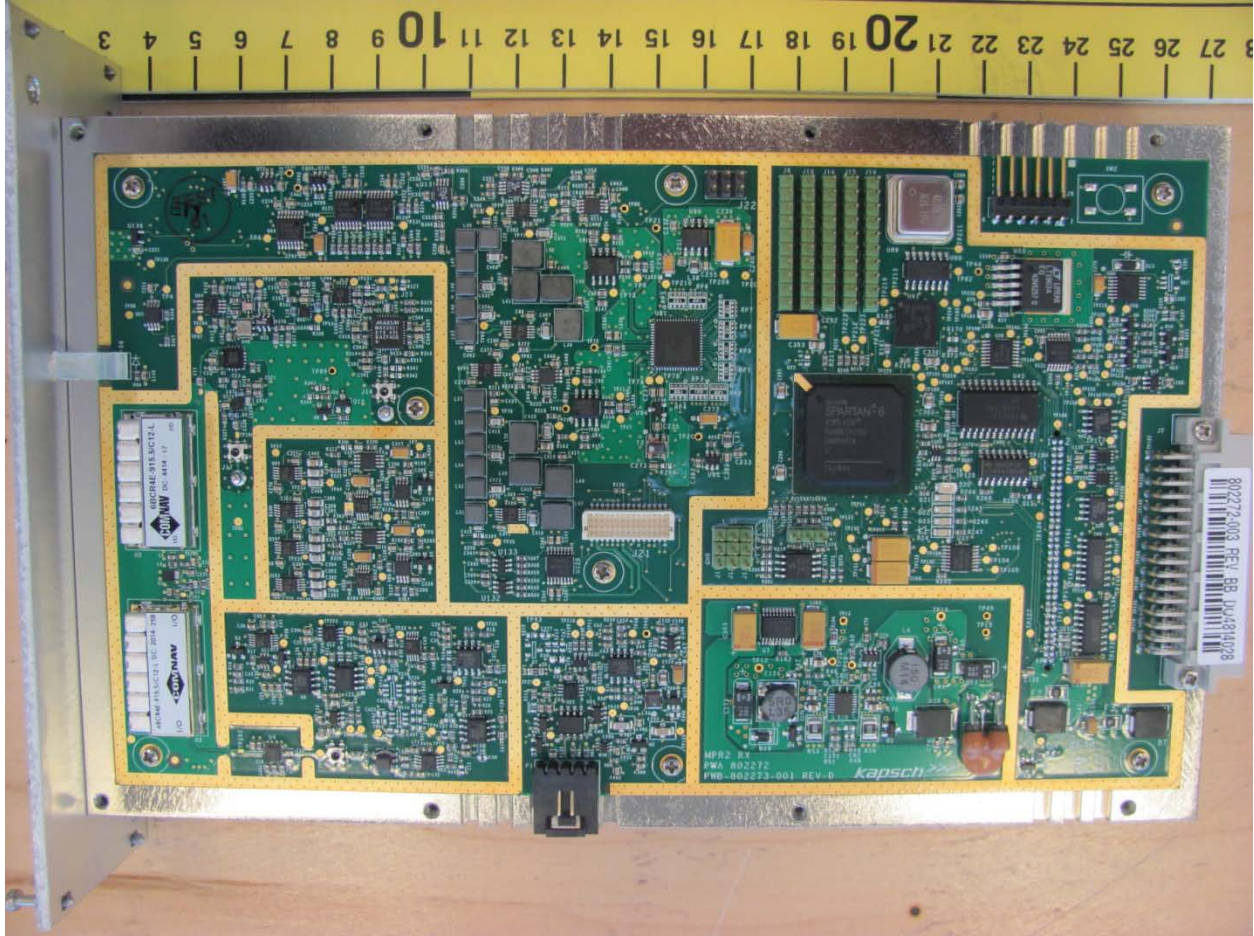

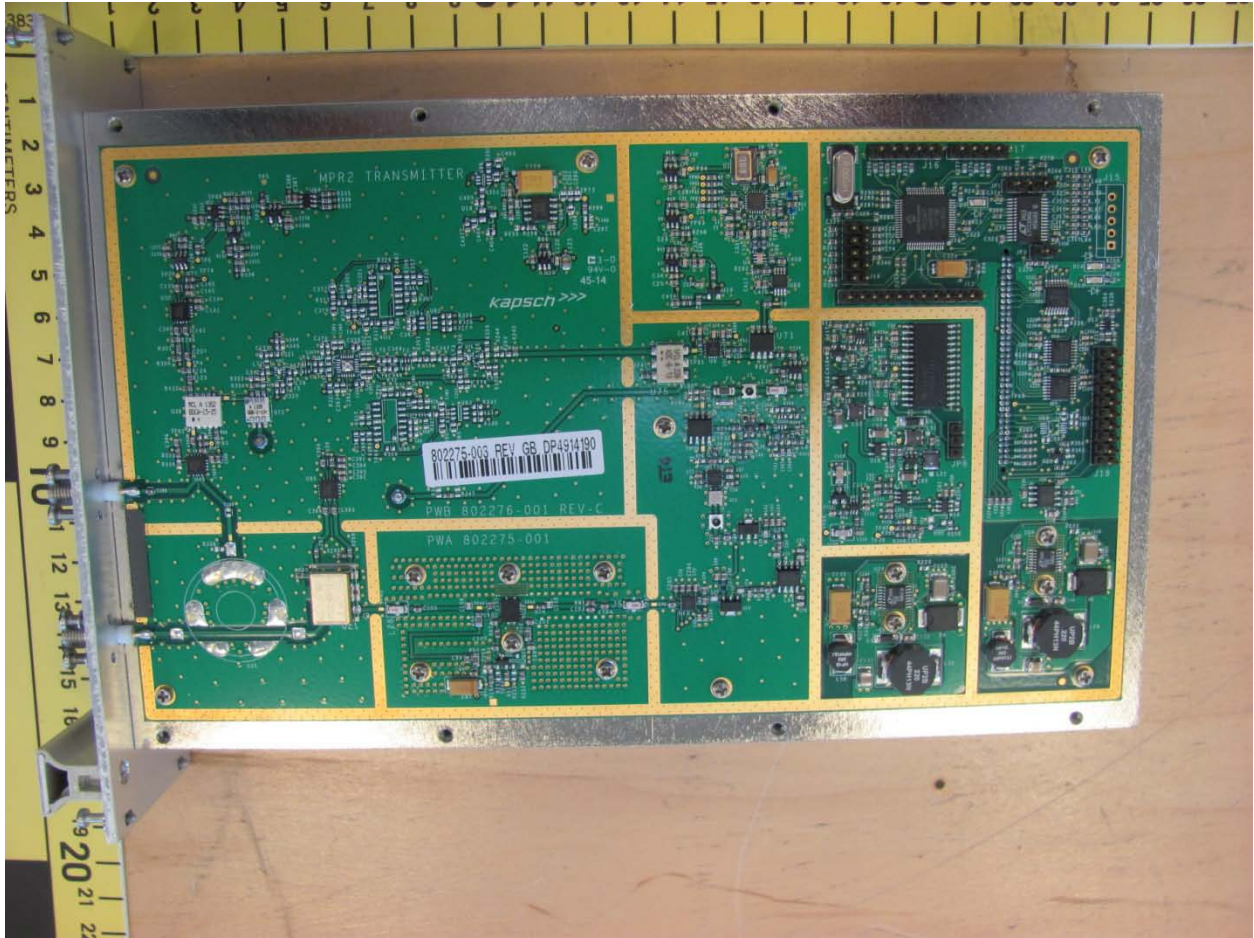


Client	Kapsch TrafficCom Canada Inc	
Product	MRMF-S with External Amplifier (MRMF-SEA)	
Standard(s)	RSS-137 Issue 2:2009 / FCC Part 90 Subpart M:2015	




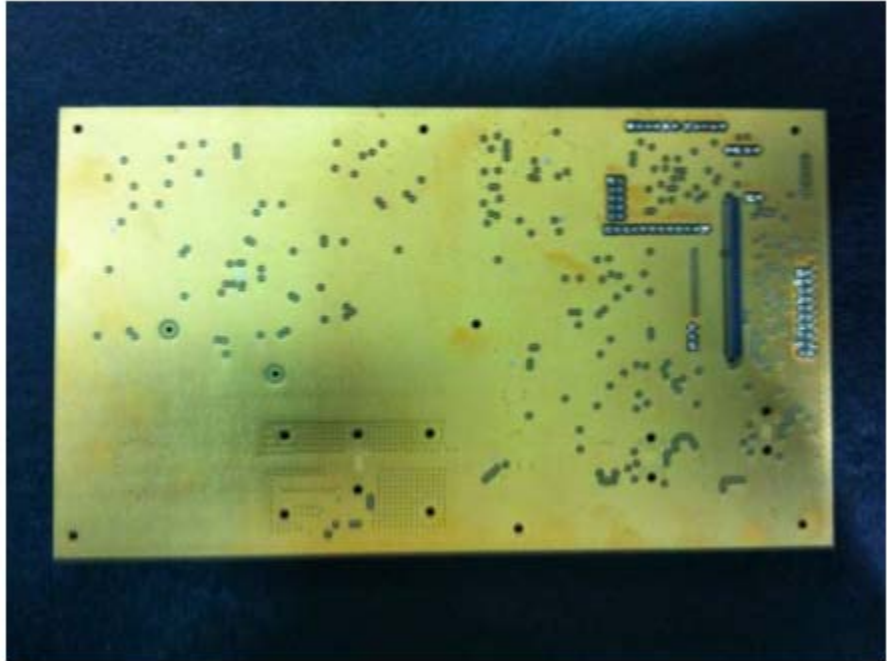
Receiver PCA Front Photo

Client	Kapsch TrafficCom Canada Inc	
Product	MRMF-S with External Amplifier (MRMF-SEA)	
Standard(s)	RSS-137 Issue 2:2009 / FCC Part 90 Subpart M:2015	




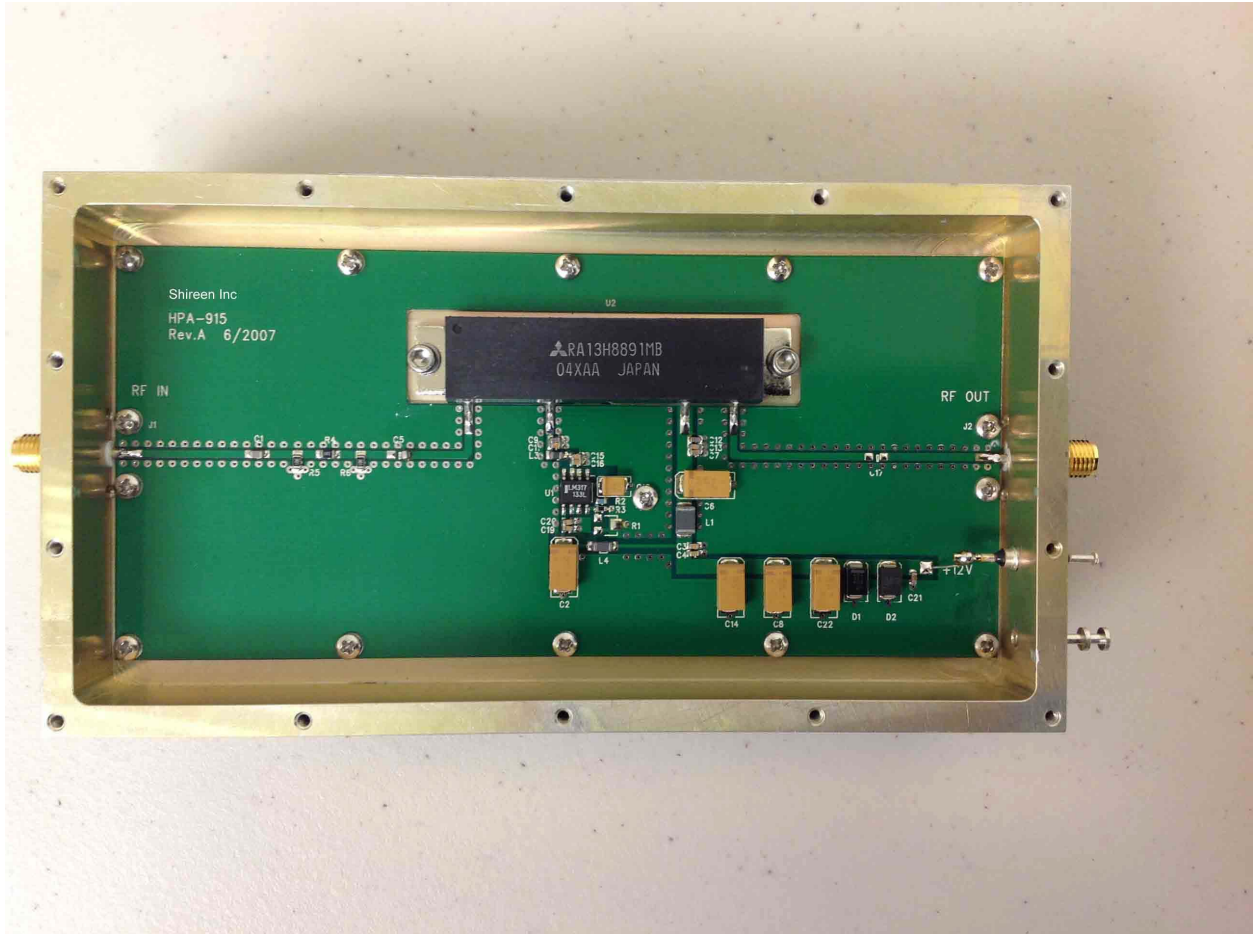
Transmitter PCA Front Photo

Client	<b>Kapsch TrafficCom Canada Inc</b>	
Product	<b>MRMF-S with External Amplifier (MRMF-SEA)</b>	
Standard(s)	RSS-137 Issue 2:2009 / FCC Part 90 Subpart M:2015	



Transmitter PCA Rear View Photo

Client	Kapsch TrafficCom Canada Inc	
Product	MRMF-S with External Amplifier (MRMF-SEA)	
Standard(s)	RSS-137 Issue 2:2009 / FCC Part 90 Subpart M:2015	



External Amplifier Internal View