

**Info**

Number	802155B Application	Author	Alastair Malarky
Date	2022 01 04		
To	TUV SUD		

---

**CVO Self-Test – 802155B-TAB Internal Photographs**

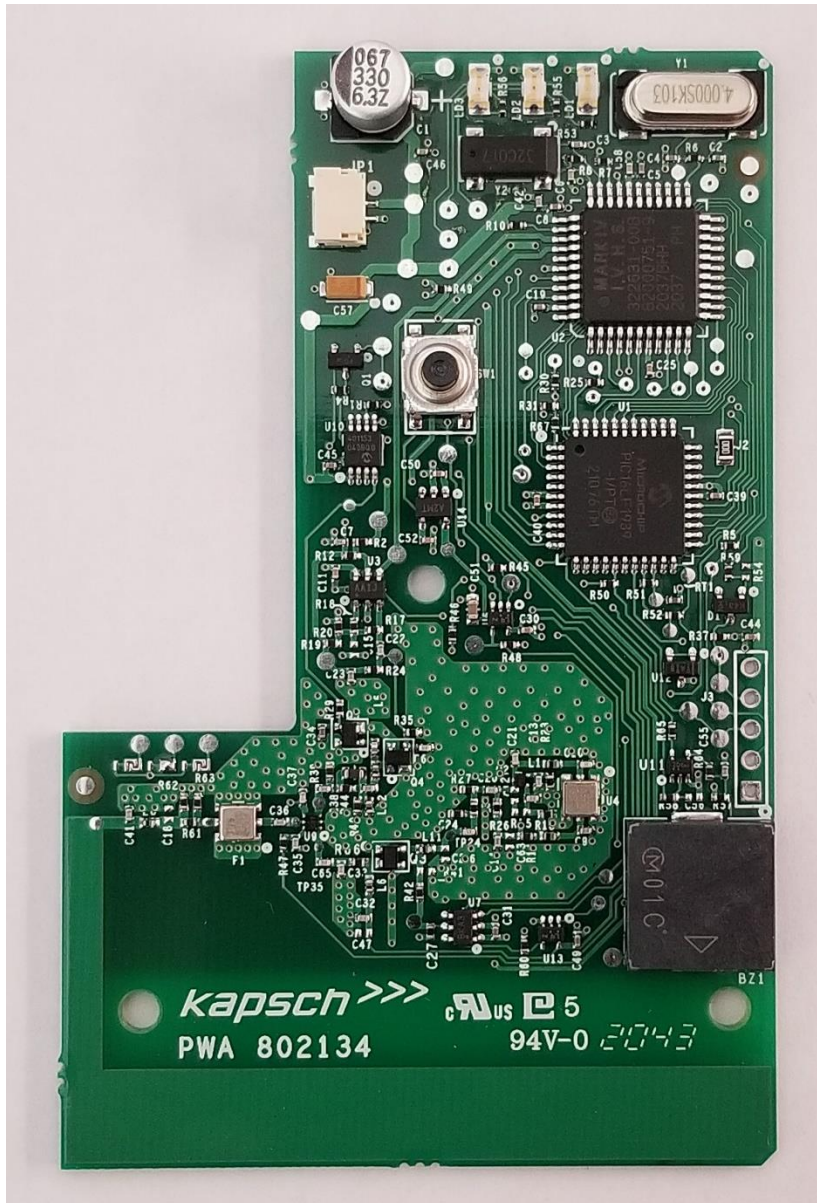
**References:** FCC ID: JQU802155B  
IC: 2665A-802155B

The internal photographs of the model tested are shown below.

© 2022 Kapsch TrafficCom Canada Inc., all rights reserved.

These drawings and specifications contain confidential and proprietary information and are the property of Kapsch TrafficCom Canada Inc. and are issued in strict confidence and will be kept confidential and used solely for the purpose intended and for no other purpose and shall not be transmitted, reproduced, copied, and/or used as the basis for manufacture or sale of apparatus unless otherwise agreed to in writing by Kapsch TrafficCom Canada Inc.

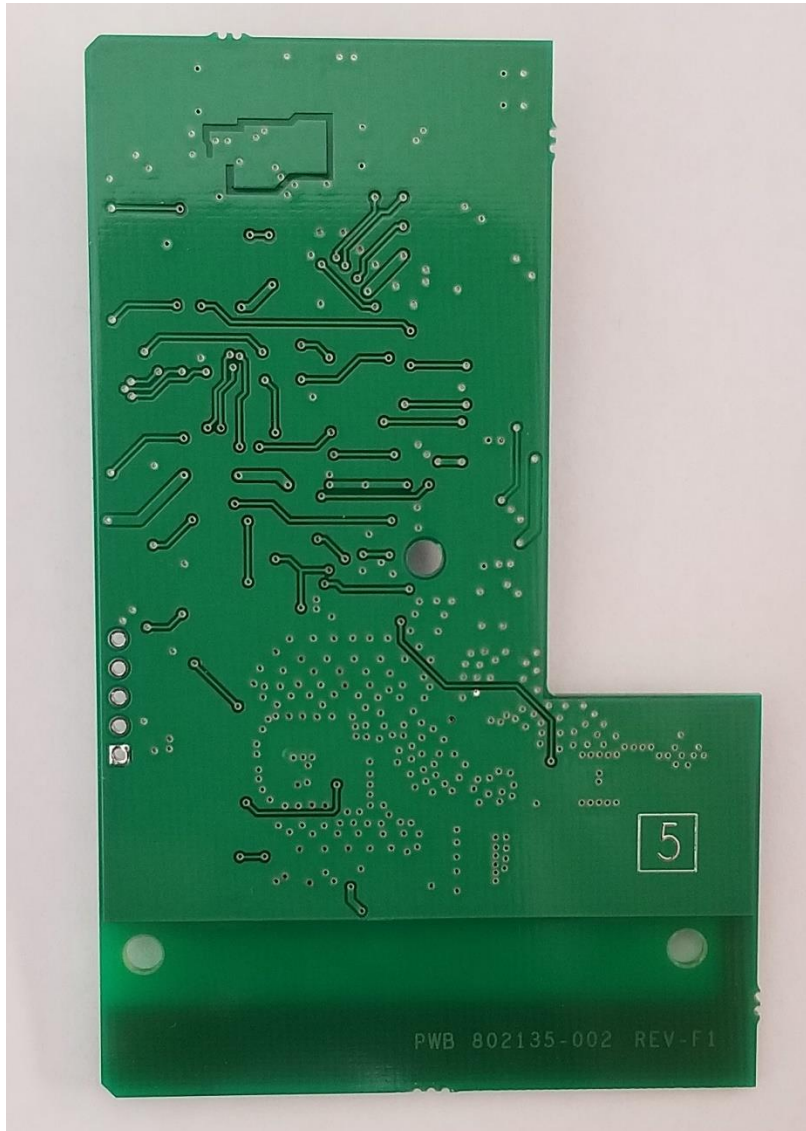
PWA Front Photo – Model 802155B -TAB



© 2022 Kapsch TrafficCom Canada Inc., all rights reserved.

These drawings and specifications contain confidential and proprietary information and are the property of Kapsch TrafficCom Canada Inc. and are issued in strict confidence and will be kept confidential and used solely for the purpose intended and for no other purpose and shall not be transmitted, reproduced, copied, and/or used as the basis for manufacture or sale of apparatus unless otherwise agreed to in writing by Kapsch TrafficCom Canada Inc.

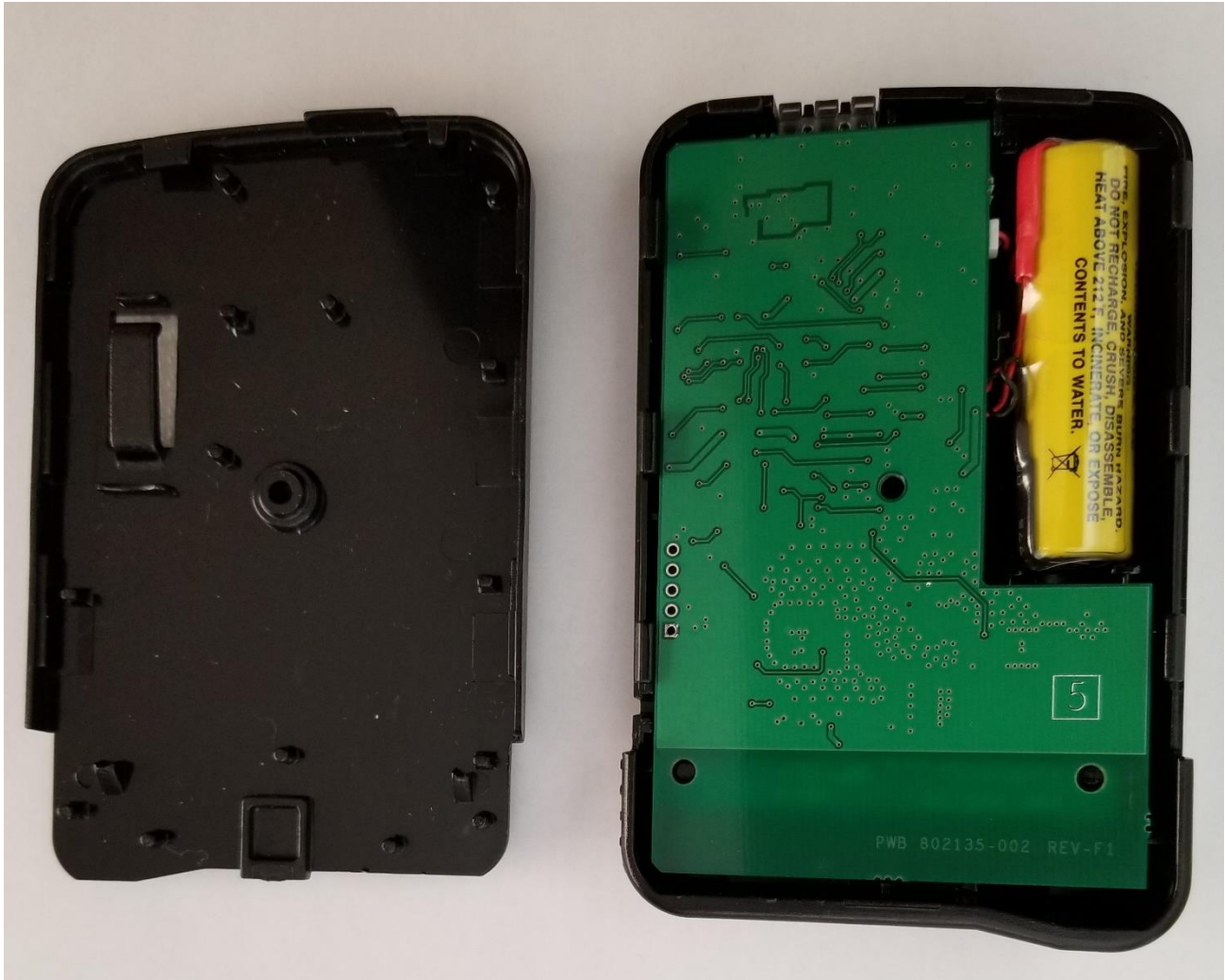
**PWA Back Photo – Model 802155B -TAB**



© 2022 Kapsch TrafficCom Canada Inc., all rights reserved.

These drawings and specifications contain confidential and proprietary information and are the property of Kapsch TrafficCom Canada Inc. and are issued in strict confidence and will be kept confidential and used solely for the purpose intended and for no other purpose and shall not be transmitted, reproduced, copied, and/or used as the basis for manufacture or sale of apparatus unless otherwise agreed to in writing by Kapsch TrafficCom Canada Inc.

PCA in a Housing Photo – Model 802155B -TAB



© 2022 Kapsch TrafficCom Canada Inc., all rights reserved.

These drawings and specifications contain confidential and proprietary information and are the property of Kapsch TrafficCom Canada Inc. and are issued in strict confidence and will be kept confidential and used solely for the purpose intended and for no other purpose and shall not be transmitted, reproduced, copied, and/or used as the basis for manufacture or sale of apparatus unless otherwise agreed to in writing by Kapsch TrafficCom Canada Inc.