

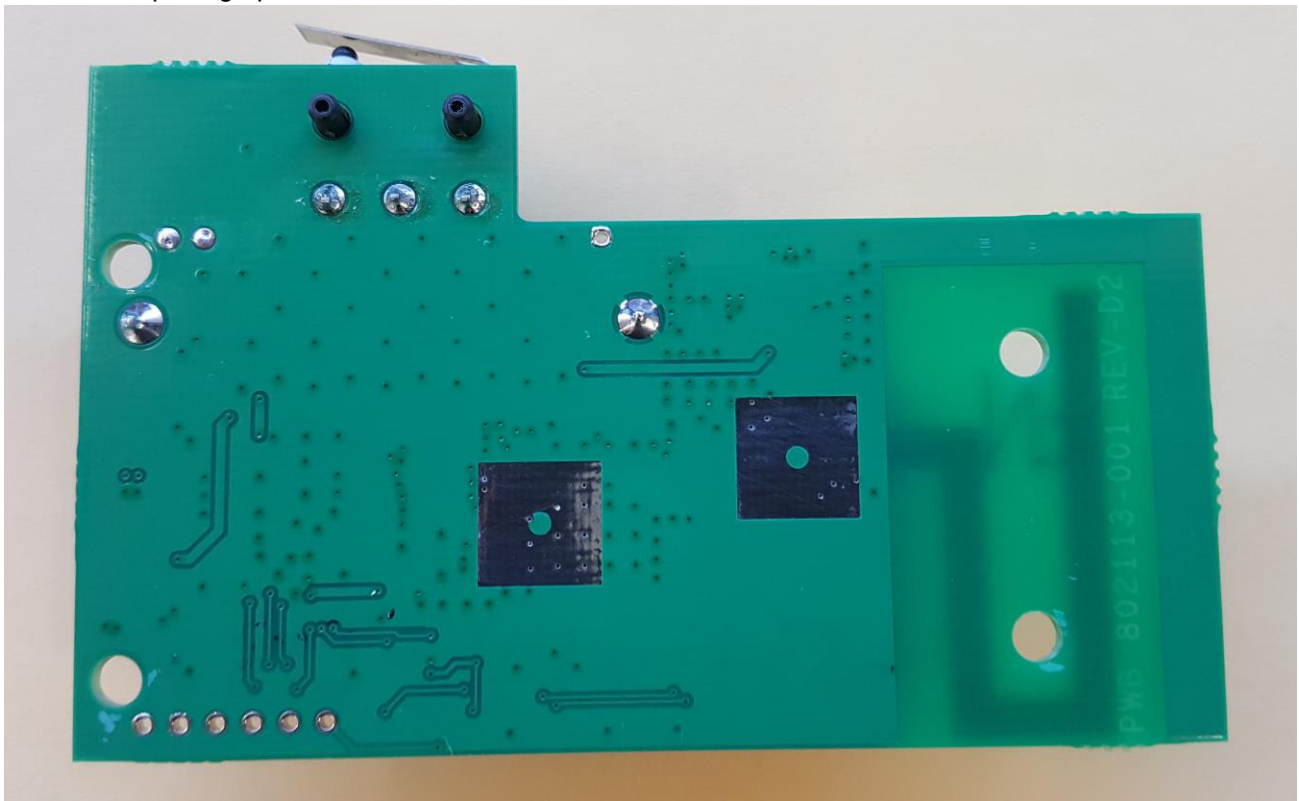
Info

Number	802120A Application	Author	Alastair Malarky
Date	2019 03 28		
To	TUV SUD		

JANUS™ HOT Interior OBU – 802120A Internal Photographs

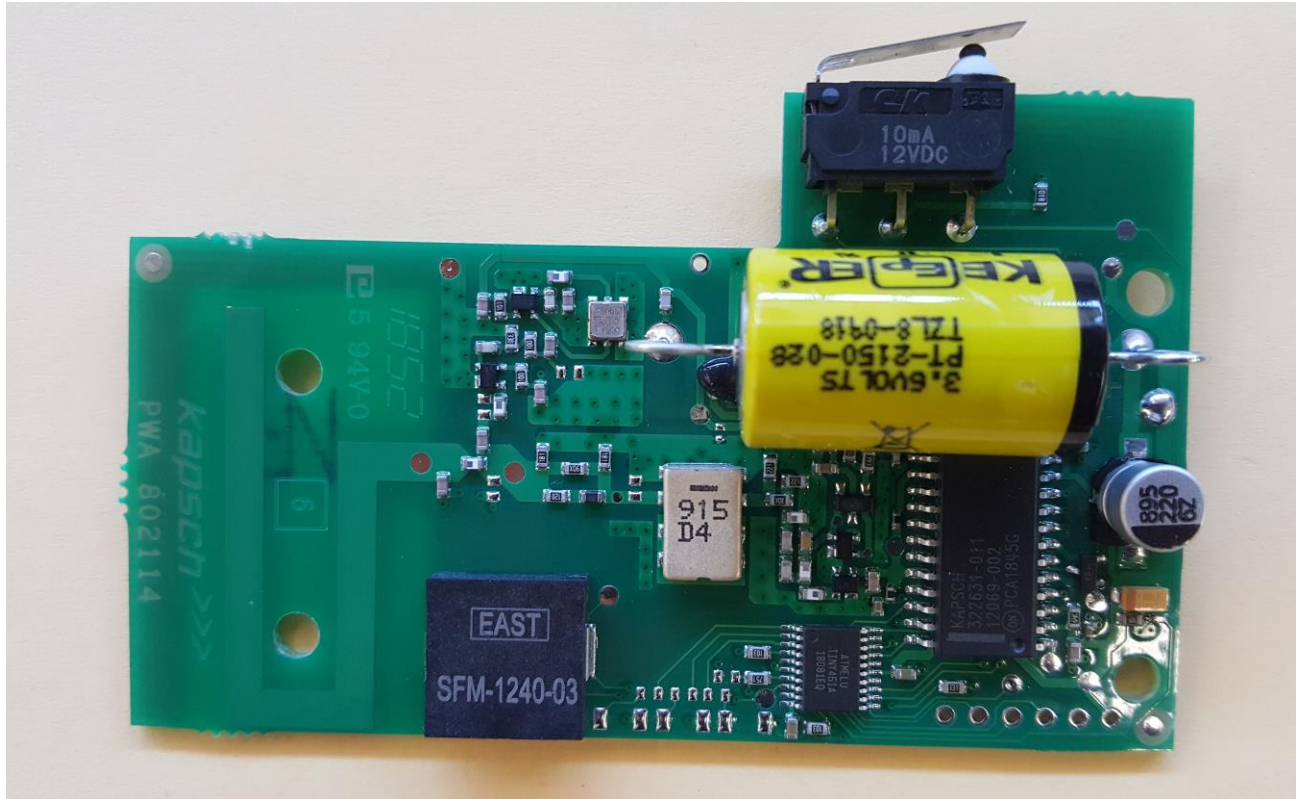
References: FCC ID: JQU802120A
IC: 2665A-802120A

The internal photographs of the model tested are shown below.

**PWA Rear Photo – Model 802120A-TAB**

© 2019 Kapsch TrafficCom Canada Inc., all rights reserved.

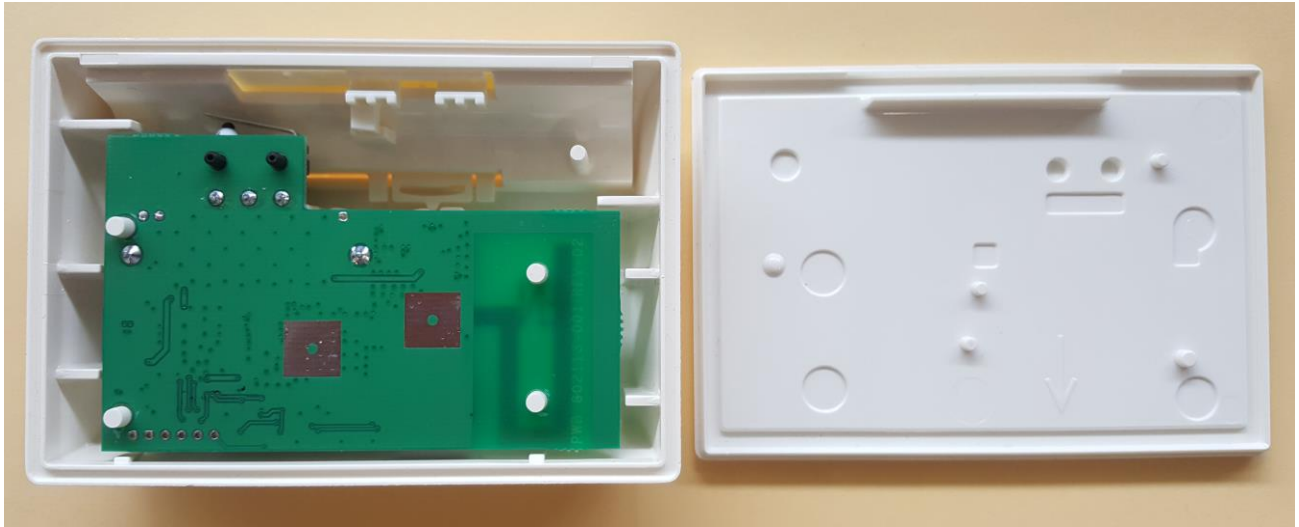
These drawings and specifications contain confidential and proprietary information and are the property of Kapsch TrafficCom Canada Inc. and are issued in strict confidence and will be kept confidential and used solely for the purpose intended and for no other purpose and shall not be transmitted, reproduced, copied, and/or used as the basis for manufacture or sale of apparatus unless otherwise agreed to in writing by Kapsch TrafficCom Canada Inc.



PWA Front Photo – Model 802120A-TAB

© 2019 Kapsch TrafficCom Canada Inc., all rights reserved.

These drawings and specifications contain confidential and proprietary information and are the property of Kapsch TrafficCom Canada Inc. and are issued in strict confidence and will be kept confidential and used solely for the purpose intended and for no other purpose and shall not be transmitted, reproduced, copied, and/or used as the basis for manufacture or sale of apparatus unless otherwise agreed to in writing by Kapsch TrafficCom Canada Inc.



PCA in a Housing Photo – Model 802120A-TAB

© 2019 Kapsch TrafficCom Canada Inc., all rights reserved.

These drawings and specifications contain confidential and proprietary information and are the property of Kapsch TrafficCom Canada Inc. and are issued in strict confidence and will be kept confidential and used solely for the purpose intended and for no other purpose and shall not be transmitted, reproduced, copied, and/or used as the basis for manufacture or sale of apparatus unless otherwise agreed to in writing by Kapsch TrafficCom Canada Inc.