

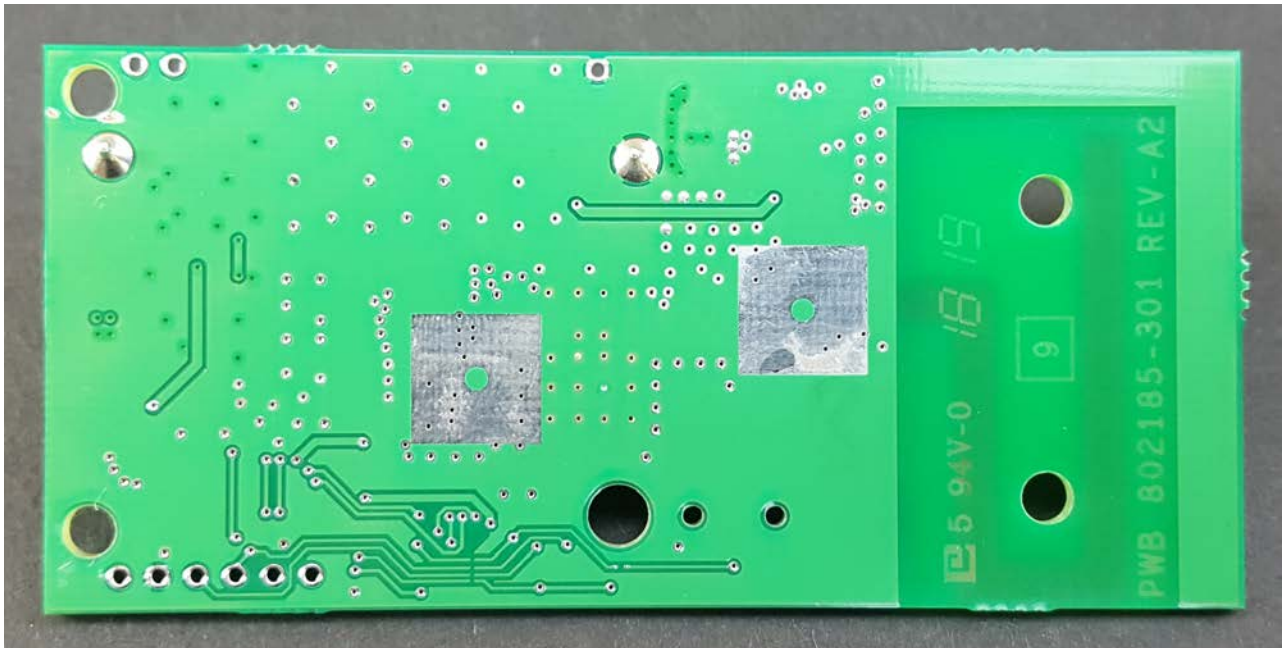
Info

Number	801660B Application	Author	Alastair Malarky
Date	2018 06 06		
To	2018 06 06		

JANUS™ Interior OBU Family – 801660B Internal Photographs

References: FCC: JQU 801660B
Industry Canada 2665A-801660B
801660B Model Differences

The internal photographs of the models tested are shown below. These are the least and most populated of the models (see the model difference file for details).

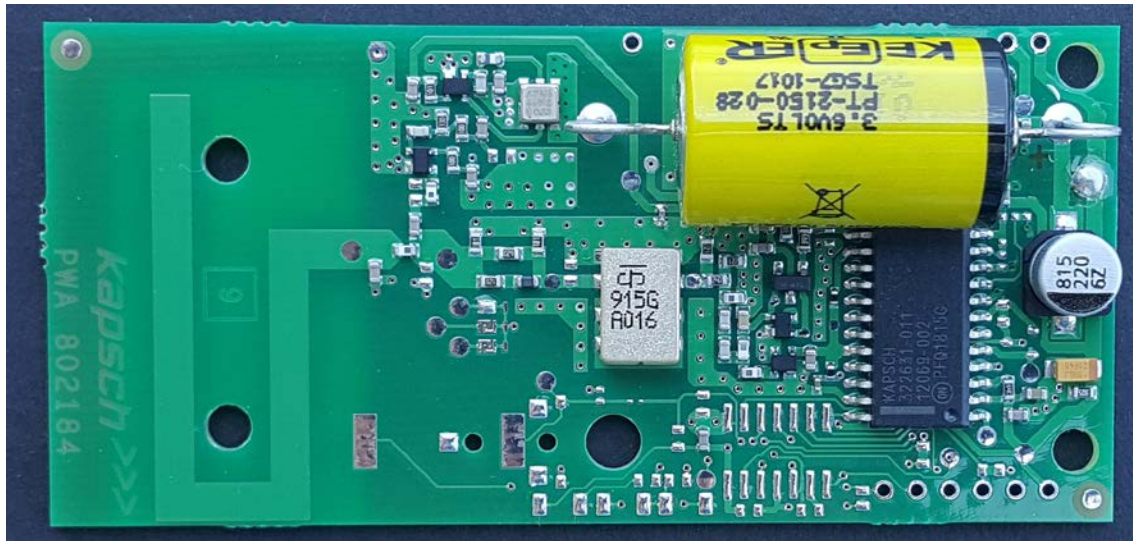


PCA Rear Photo – common to all models

© 2018 Kapsch TrafficCom Canada Inc., all rights reserved.

These drawings and specifications contain confidential and proprietary information and are the property of Kapsch TrafficCom Canada Inc. and are issued in strict confidence and will be kept confidential and used solely for the purpose intended and for no other purpose and shall not be transmitted, reproduced, copied, and/or used as the basis for manufacture or sale of apparatus unless otherwise agreed to in writing by Kapsch TrafficCom Canada Inc.

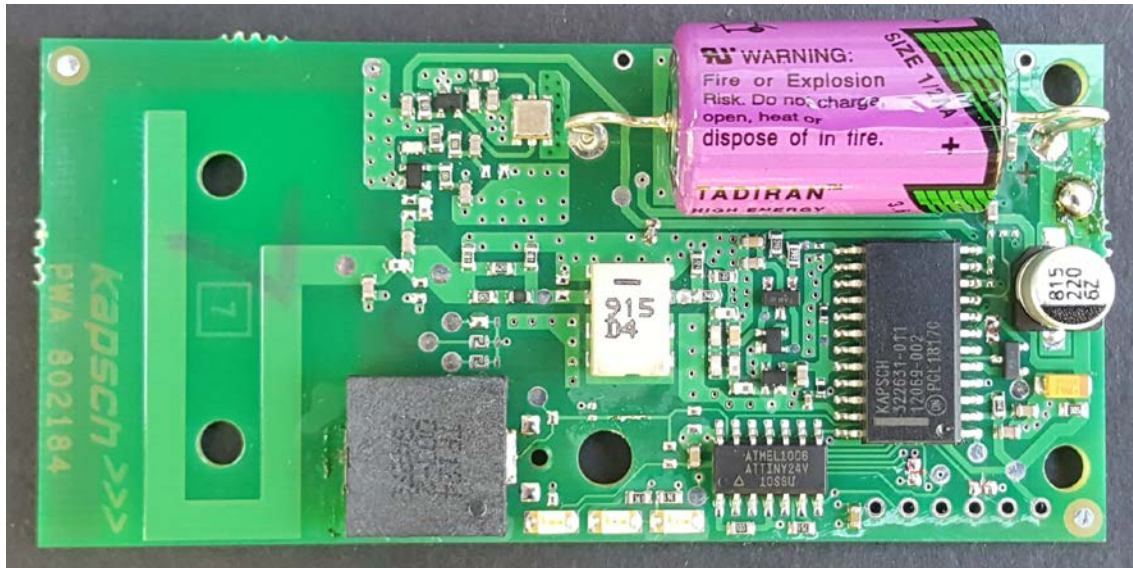
PCA Front Photo – Model 801660B-TAB



© 2018 Kapsch TrafficCom Canada Inc., all rights reserved.

These drawings and specifications contain confidential and proprietary information and are the property of Kapsch TrafficCom Canada Inc. and are issued in strict confidence and will be kept confidential and used solely for the purpose intended and for no other purpose and shall not be transmitted, reproduced, copied, and/or used as the basis for manufacture or sale of apparatus unless otherwise agreed to in writing by Kapsch TrafficCom Canada Inc.

PCA Front Photo – Model 801970B-TAB



© 2018 Kapsch TrafficCom Canada Inc., all rights reserved.

These drawings and specifications contain confidential and proprietary information and are the property of Kapsch TrafficCom Canada Inc. and are issued in strict confidence and will be kept confidential and used solely for the purpose intended and for no other purpose and shall not be transmitted, reproduced, copied, and/or used as the basis for manufacture or sale of apparatus unless otherwise agreed to in writing by Kapsch TrafficCom Canada Inc.