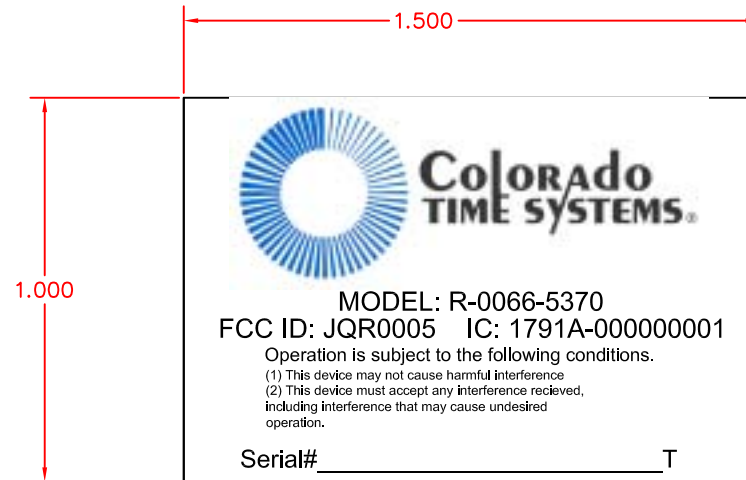



REVISIONS				
REV	DESCRIPTION	ECO/PCO#	DATE	APPROVED
A	RELEASE TO PRODUCTION	2902	09/14/2007	MMB

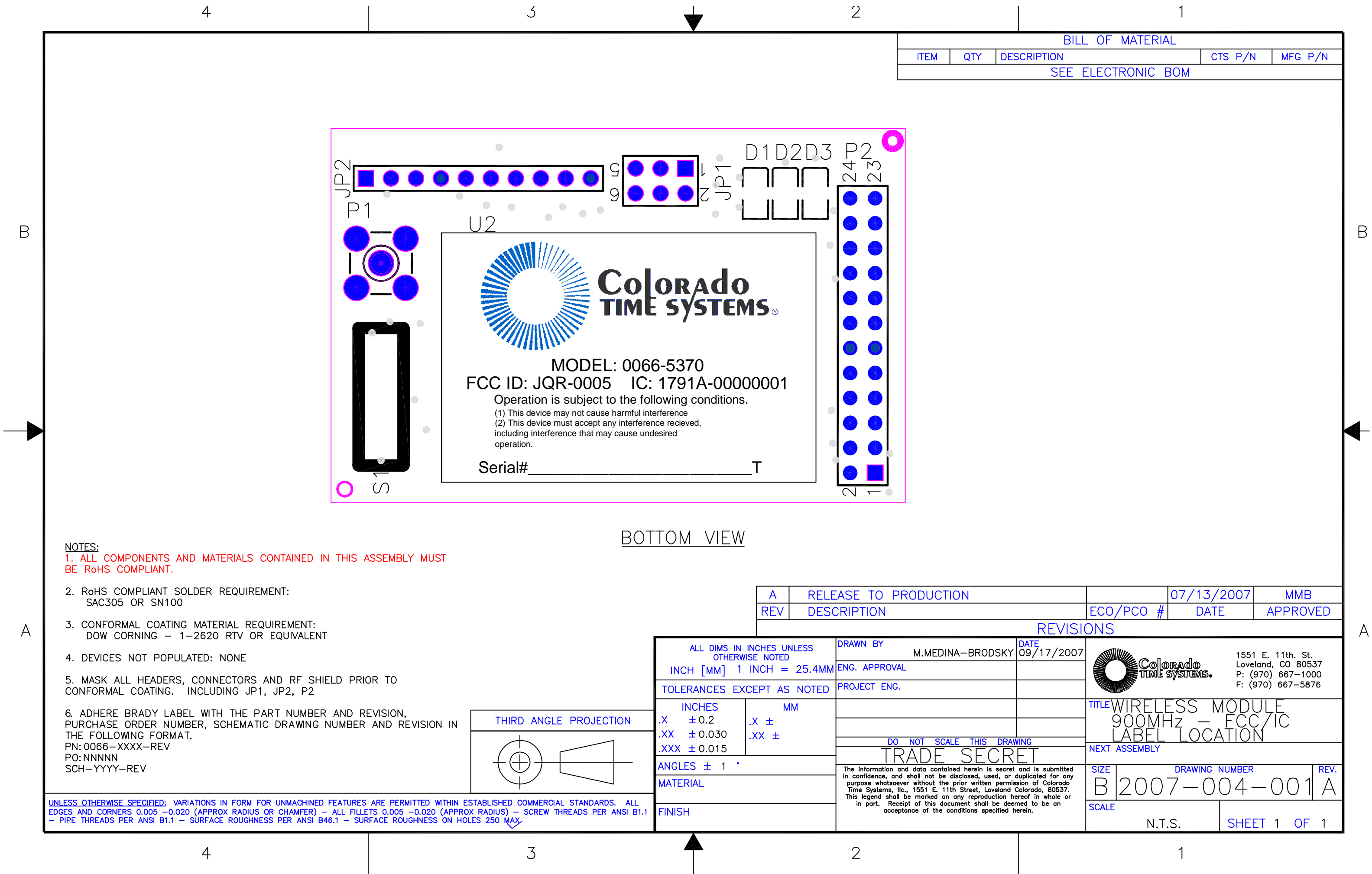


NOTES:

1. ALL COMPONENTS AND MATERIALS CONTAINED IN THIS ASSEMBLY MUST BE RoHS COMPLIANT.

2. LABEL MATERIAL: 3M – 7842TL

	UNLESS OTHERWISE SPECIFIED, DIMENSIONS ARE IN INCHES.		 Colorado TIME SYSTEMS.		1551 E. 11th. St. Loveland, CO 80537 P: (970) 667-1000 F: (970) 667-0988					
	TOLERANCES ARE: .XX = ± .06 .XXX = ± .030				ANGLES ±1					
	DO NOT SCALE DRAWING		DRAWN BY		M.MEDINA-BRODSKY		DATE 9/14/07		TITLE DECAL – MODULE WIRELESS 900MHz	
	TRADE SECRET The information and data contained herein is secret and is submitted in confidence, and shall not be disclosed, used, or duplicated for any purpose whatsoever without the prior written permission of Colorado Time Systems, Lic., 1551 E. 11th Street, Loveland Colorado, 80537. This legend shall be marked on any reproduction hereof in whole or in part. Receipt of this document shall be deemed to be an acceptance of the conditions specified herein.		ENG. APPROVAL				NEXT ASSEMBLY			
PROJECT ENG.										
					SIZE A		DRAWING NUMBER R-012-441		REV. A	
				SCALE 1:2		SHEET 1		OF 1		



BILL OF MATERIAL				
ITEM	QTY	DESCRIPTION	CTS P/N	MFG P/N
SEE ELECTRONIC BOM				

BOTTOM VIEW

NOTES:

1. ALL COMPONENTS AND MATERIALS CONTAINED IN THIS ASSEMBLY MUST BE RoHS COMPLIANT.

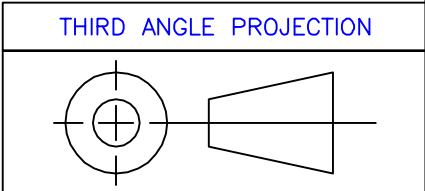
2. RoHS COMPLIANT SOLDER REQUIREMENT:
SAC305 OR SN100

3. CONFORMAL COATING MATERIAL REQUIREMENT:
DOW CORNING – 1-2620 RTV OR EQUIVALENT


4. DEVICES NOT POPULATED: NONE

5. MASK ALL HEADERS, CONNECTORS AND RF SHIELD PRIOR TO CONFORMAL COATING. INCLUDING JP1, JP2, P2

6. ADHERE BRADY LABEL WITH THE PART NUMBER AND REVISION, PURCHASE ORDER NUMBER, SCHEMATIC DRAWING NUMBER AND REVISION IN THE FOLLOWING FORMAT.
PN: 0066-XXXX-REV
PO: NNNNN
SCH: YYYYY-REV



UNLESS OTHERWISE SPECIFIED: VARIATIONS IN FORM FOR UNMACHINED FEATURES ARE PERMITTED WITHIN ESTABLISHED COMMERCIAL STANDARDS. ALL EDGES AND CORNERS 0.005 -0.020 (APPROX RADIUS OR CHAMFER) – ALL FILLETS 0.005 -0.020 (APPROX RADIUS) – SCREW THREADS PER ANSI B1.1 – PIPE THREADS PER ANSI B1.1 – SURFACE ROUGHNESS PER ANSI B46.1 – SURFACE ROUGHNESS ON HOLES 250 MAX

A	RELEASE TO PRODUCTION		07/13/2007	MMB
REV	DESCRIPTION	ECO/PCO #	DATE	APPROVED
REVISIONS				
DIMENSIONS UNLESS OTHERWISE NOTED INCH = 25.4MM		DRAWN BY M.MEDINA-BRODSKY	DATE 09/17/2007	 1551 E. 11th. St. Loveland, CO 80537 P: (970) 667-1000 F: (970) 667-5876
TOLERANCES EXCEPT AS NOTED		ENG. APPROVAL		
MATERIAL		PROJECT ENG.		
ANGLES ± 1 °				TITLE WIRELESS MODULE 900MHz — FCC/IC LABEL LOCATION
SURFACE FINISH ±				
DO NOT SCALE THIS DRAWING				
TRADE SECRET		NEXT ASSEMBLY		
The information and data contained herein is secret and is submitted in confidence, and shall not be disclosed, used, or duplicated for any purpose whatsoever without the prior written permission of Colorado Time Systems, Inc., 1551 E. 11th Street, Loveland Colorado, 80537. This legend shall be marked on any reproduction hereof in whole or in part. Receipt of this document shall be deemed to be an acceptance of the conditions specified herein.		SIZE	DRAWING NUMBER	REV.
		B	2007-004-001	A
		SCALE		
		N.T.S.		SHEET 1 OF 1