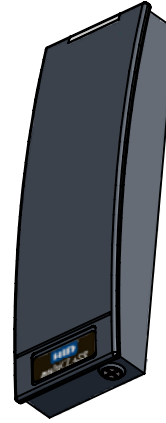
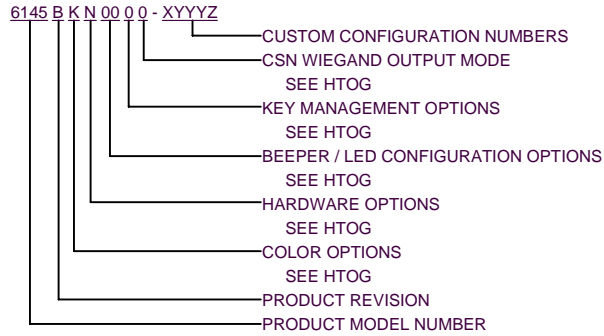


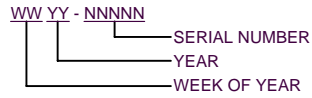
NOTES, UNLESS OTHERWISE SPECIFIED:

1. CONFIGURE READER AS REQUIRED USING COMMAND CARD CALLED OUT ON BOM. IF NO CARD IS CALLED OUT ON BOM, THEN NO CONFIGURATION IS REQUIRED.
2. IF NECESSARY, MARK THE FOLLOWING INFORMATION ON THE PRODUCT LABEL:
 - A) MODEL NUMBER: (BASIC MODEL NUMBER SHOWN)

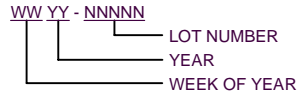


REVISION HISTORY				
REV	ECO #	DESCRIPTION	DATE	APPROVED
1	--	INITIAL PROTOTYPE	5/11/2007	RB

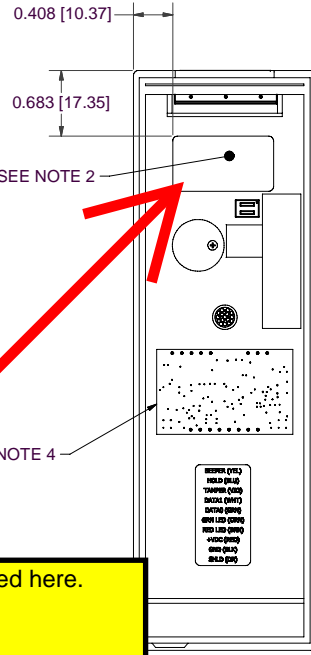
- B) FINAL ASSEMBLY NUMBER: 6501-300-XX.
- C) DATE CODE - SERIAL NUMBER:



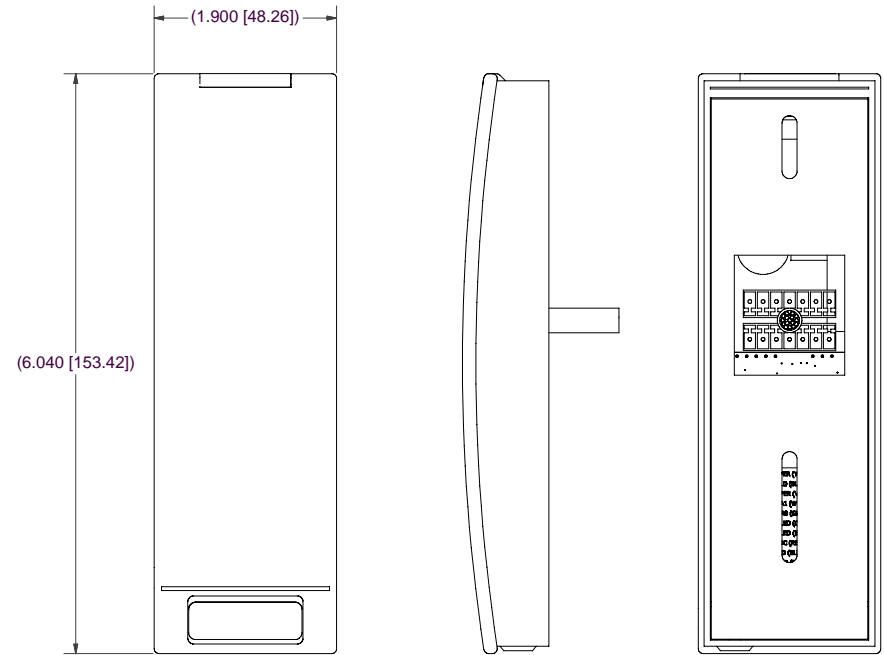
3. MARK SHIPPING LABEL (ITEM 3):
 - A) MODEL NUMBER: SEE NOTE 2. A).
 - B) DATE CODE - LOT NUMBER



- C) FIRM WARE NUMBER
4. ASSEMBLE ITEM 6 (EXP MODULE) AS REQUIRED TO ITEM 1 (READER).
 5. PACKAGE ITEM 2 (ACC KIT) ALONG WITH ITEM 1 (ASSEMBLED READER) INTO ITEM 4 (SHIPPING BOX). APPLY ITEM 3 (SHIPPING LABEL) TO SIDE OF ITEM 4 (SHIPPING BOX) AND APPLY ITEM 5 (TOP LABEL) TO TOP ITEM 4 (SHIPPING BOX).



FCC and IC labels are placed here.



HID GLOBAL CONFIDENTIAL AND PROPRIETARY INFORMATION. THIS DOCUMENT CONTAINS CONFIDENTIAL AND PROPRIETARY INFORMATION, WHICH MAY NOT BE DUPLICATED, PUBLISHED, DISSEMINATED OR DISCLOSED TO UNINTENDED THIRD PARTY RECIPIENTS (OR JUST: "THIRD PARTIES") OR USED FOR ANY PURPOSE, WITHOUT WRITTEN PERMISSION FROM HID GLOBAL CORPORATION. IF YOU ARE AN UNINTENDED RECIPIENT OF THIS PROPRIETARY INFORMATION OR ARE UNWILLING TO ACCEPT THE ABOVE RESTRICTIONS, PLEASE IMMEDIATELY RETURN THIS DOCUMENT TO HID GLOBAL CORPORATION, 9292 JERONIMO RD., IRVINE, CA 92618-1905.

DIMENSIONS ARE IN INCH/ES [MILLIMETER/S] UNLESS OTHERWISE SPECIFIED

.XX +/- .01 [.3]

.XXX +/- .005 [.13]

FINISH N/A

DO NOT SCALE DRAWING
SEE SEPARATE APPROVAL LIST
SEE SEPARATE PARTS LIST
THIRD ANGLE PROJECTION
INTERPRET DRAWING PER ANSI/ASME Y14.5M
MATERIAL N/A

HID IRVINE, CALIFORNIA

DWG TITLE
END ITEM, RP15 iCLASS MULTICLASS READER

SIZE C	CAGE CODE	DWG NO 6145A	REV 1
SCALE: N/A		SHEET: 1 of 1	