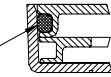
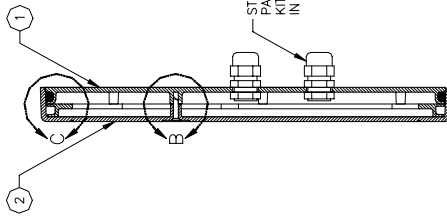


NOTES, UNLESS OTHERWISE SPECIFIED:
 1. TEST ASSEMBLY IN ACCORDANCE WITH ITEM 10 (TEST PROC).

O-RING IS PART OF ACCESSORY KIT AND IS INSTALLED IN THE FIELD



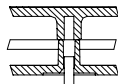
DETAIL C
SCALE: 1/1



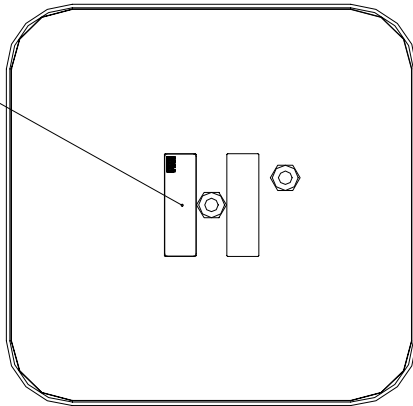
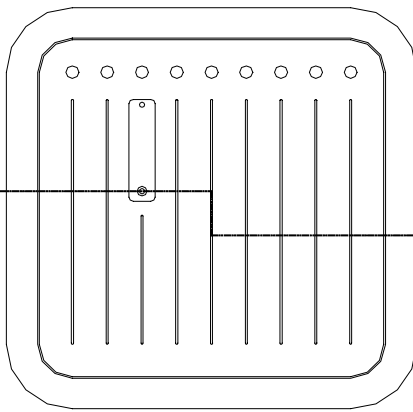
STRAIN RELIEF IS PART OF ACCESSORY KIT AND IS INSTALLED IN THE FIELD

SECTION A-A

SCREW IS PART OF ACCESSORY KIT AND IS INSTALLED IN THE FIELD



DETAIL B
SCALE: 1/1



REVISIONS			
REV	DESCRIPTION	DATE	APPROVED
A	INITIAL RELEASE		
B	SEE ECO # E6015-2		

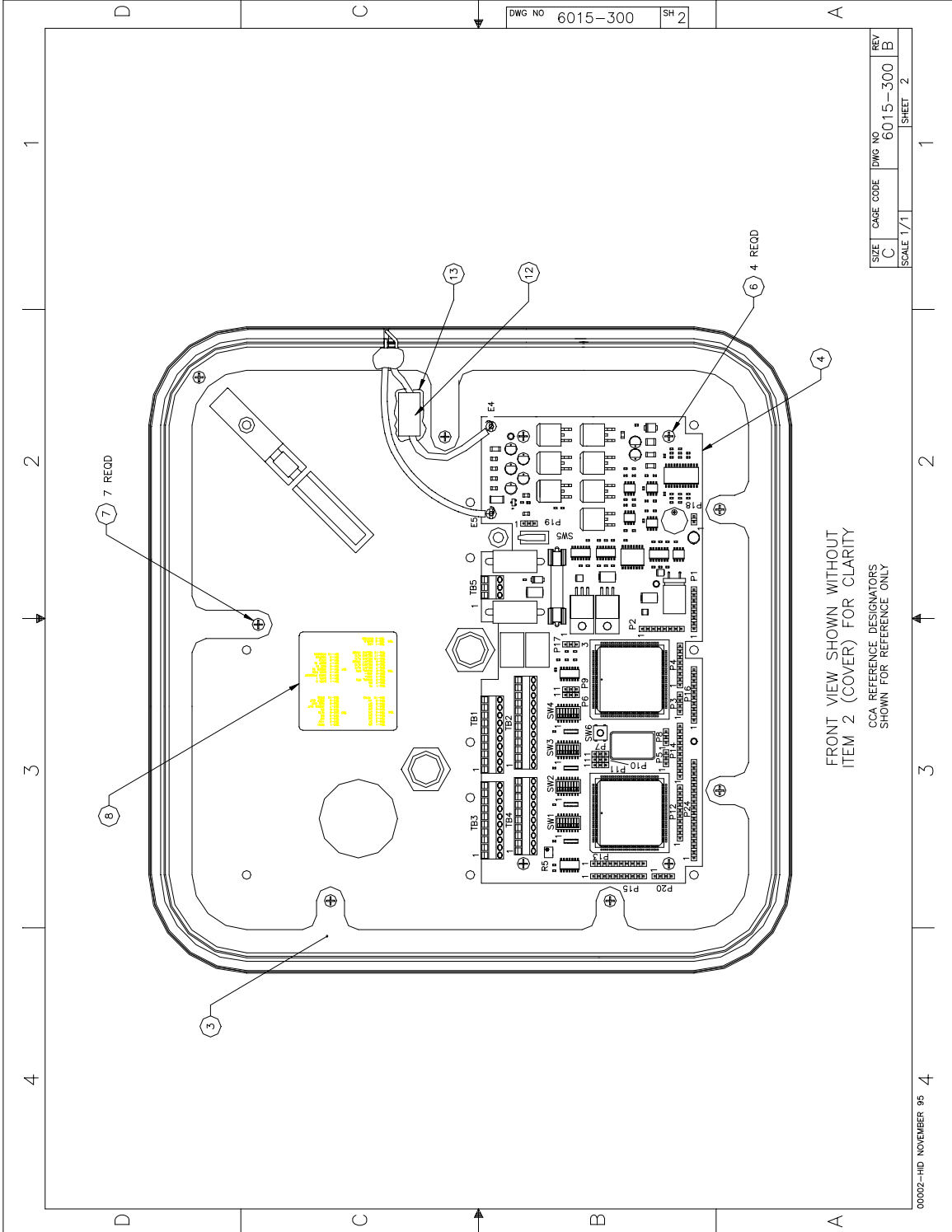
COMPUTER GENERATED DRAWING
 REVISIONS NOT RECORDED IN DATABASE
 AUTOCAD RELEASE 14

DWG NO 6015-300 SH 1

-01 PART
 SEE SEPARATE PARTS LIST

FIND NO	CAGE NO	QTY REQD	PARTS OR IDENTIFYING NO	PARTS LIST	NOMENCLATURE OR DESCRIPTION
				DO NOT SCALE DRAWING APPROVALS DATE	HID IRVINE, CALIFORNIA
				DWN ANDRESKY 122898 DWG TITLE	FINAL ASSEMBLY,
				CHP STALLMAN 010299 AMR100 PROP PASS READER	
				APPARSENEAU 010299	SIZE CAGE CODE DWG NO 6015-300
				APVD J BRADIN 010299	REV B
					SCALE 1/2 SHEET 1 OF 2

THIS DOCUMENT CONTAINS PROPRIETARY INFORMATION TO OTHERS OR USED FOR MANUFACTURING PURPOSES WITHOUT PERMISSION OF HID CORPORATION



DWG NO 6015-300 SH 2

SIZE	CAGE CODE	DWG NO	REV
C		6015-300	B
SCALE 1/1			SHEET 2

FRONT VIEW SHOWN WITHOUT
ITEM 2 (COVER) FOR CLARITY
CCA REFERENCE DESIGNATORS
SHOWN FOR REFERENCE ONLY

00002-HID NOVEMBER 95 4