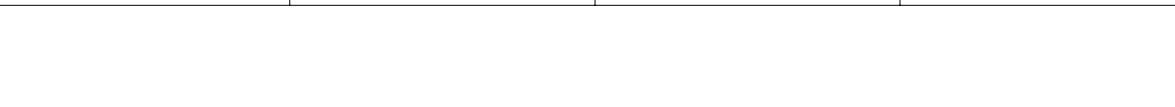
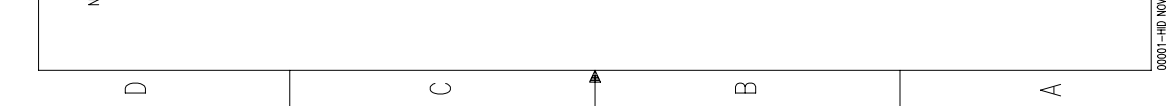
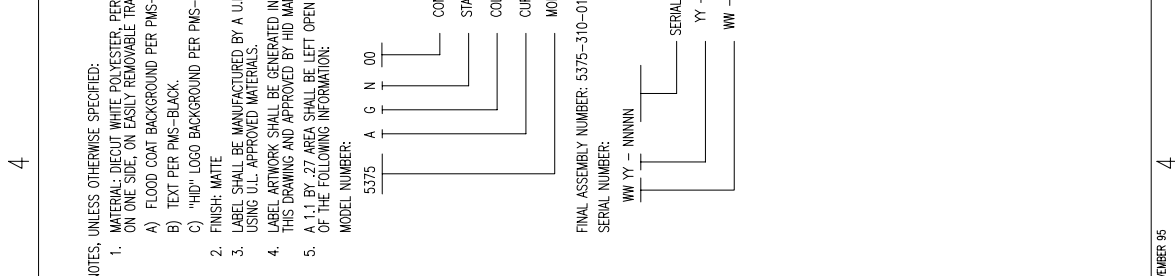
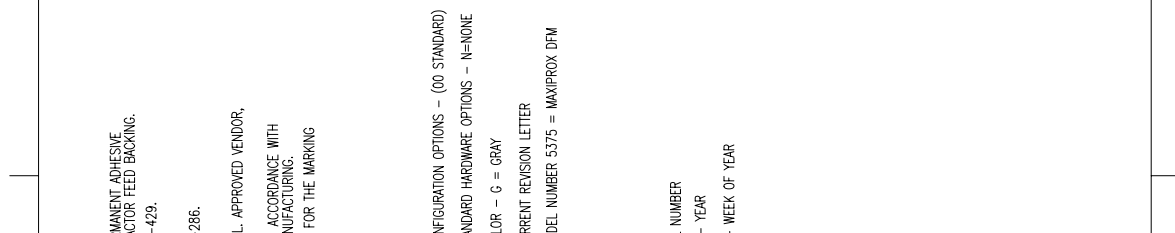
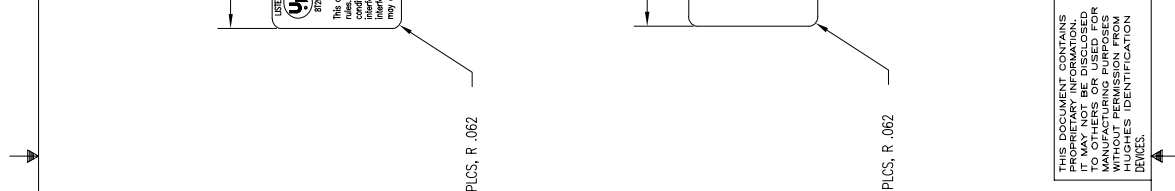
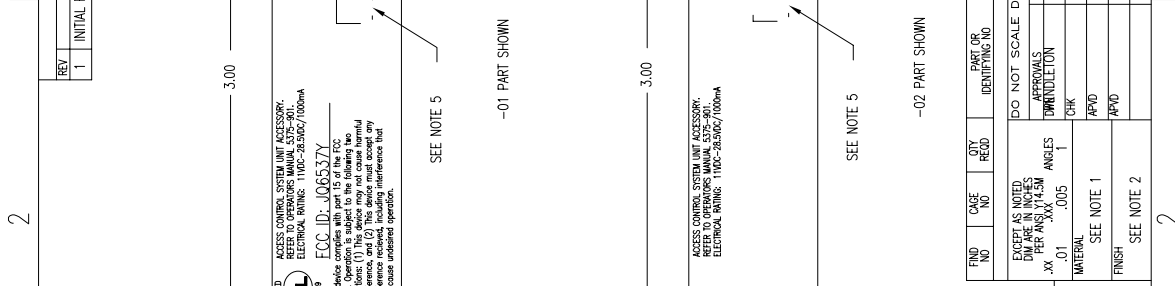
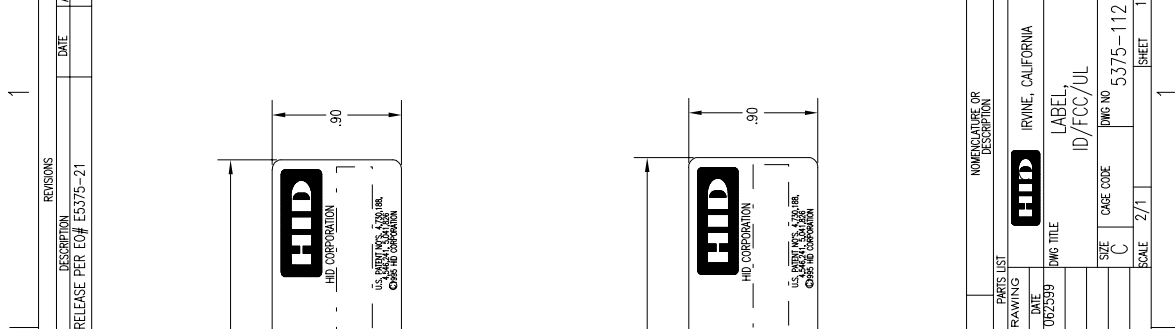


REV	DESCRIPTION	DATE	APPROVED
1	INITIAL RELEASE PER EQ# E5375-21		



NOTES: UNLESS OTHERWISE SPECIFIED:

- MATERIAL: DIECUT WHITE POLYESTER, PERMANENT ADHESIVE ON ONE SIDE, ON EASILY REMOVABLE TRACTOR FEED BACKING.
  - A) FLOOD COAT BACKGROUND PER PMS-429.
  - B) TEXT PER PMS-BLACK.
  - C) "HID" LOGO BACKGROUND PER PMS-286.
- FINISH: MATTE
- LABEL SHALL BE MANUFACTURED BY A U.L. APPROVED VENDOR, USING U.L. APPROVED MATERIALS.
- LABEL ARTWORK SHALL BE GENERATED IN ACCORDANCE WITH THIS DRAWING AND APPROVED BY HID MANUFACTURING.
- A 1.4 BY .27 AREA SHALL BE LEFT OPEN FOR THE MARKING OF THE FOLLOWING INFORMATION:
  - MODEL NUMBER:
    - 5375
    - A G N 00
  - CONFIGURATION OPTIONS - (00 STANDARD)
  - STANDARD HARDWARE OPTIONS - N=NONE
  - COLOR - G = GRAY
  - CURRENT REVISION LETTER
  - MODEL NUMBER 5375 = MAXIPIX DFM

FINAL ASSEMBLY NUMBER: 5375-310-01

SERIAL NUMBER:  
 WW YY - NNNNN  
 SERIAL NUMBER  
 YY - YEAR  
 WW - WEEK OF YEAR

FINO	CAGE	QTY	PART OR	NOMENCLATURE OR
NO	NO	REQD	IDENTIFYING NO	DESCRIPTION
				<b>HID</b> IRVINE, CALIFORNIA
DO NOT SCALE DRAWING				
EXCEPT AS NOTED, DIMENSIONS ARE PER ANSI Y14.5M ANGLES				
.XX	.01	.005	APPROVALS	DATE
			CHK	08/25/99
			APPD	
FINISH SEE NOTE 1				
SEE NOTE 2				
				DWG TITLE
				U.S. PATENT #5,428,188
				©1995 HID CORPORATION
				SIZE C
				CAGE CODE
				DWG NO 5375-112
				REV 1
				SCALE 2/1
				SHEET 1 OF 1

THIS DOCUMENT CONTAINS PROPRIETARY INFORMATION. IT MAY NOT BE DISCLOSED OR REPRODUCED FOR MANUFACTURING PURPOSES WITHOUT PERMISSION FROM HUGHES IDENTIFICATION DEVICES.