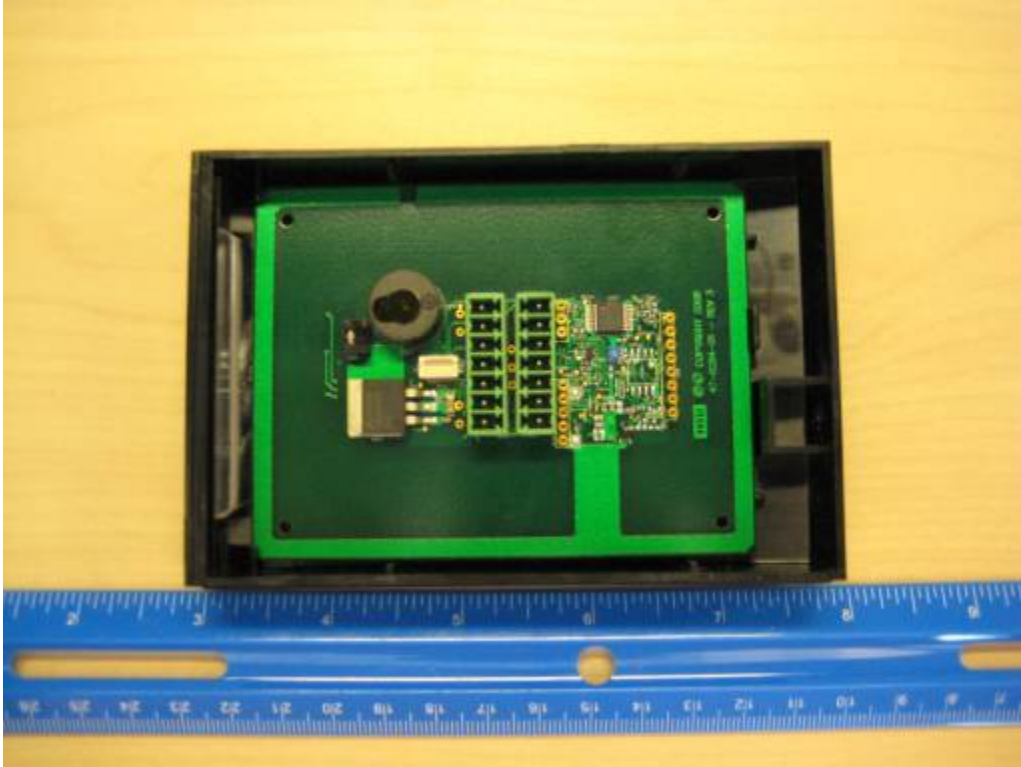


Internal Photos:

FCC ID: JQ6-ICLASS and IC ID: 2236B-ICLASS Model: R-640X-300

4 Reader Types Comprise Model – All having Electrically Identical Radio and Board integrated on same Board as Antenna – Separated Photos by Reader Type (reader type signifies plastic enclosure shape and antenna size)

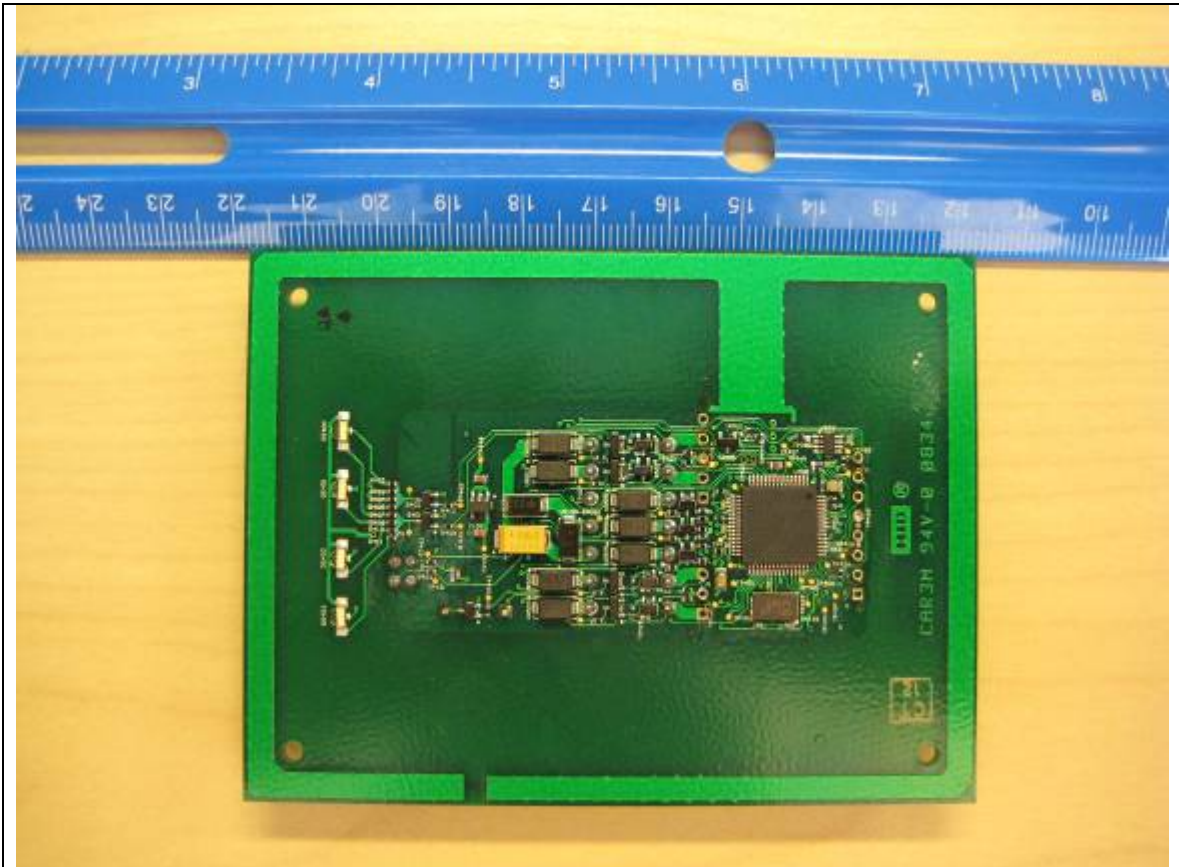
R40 Reader Type



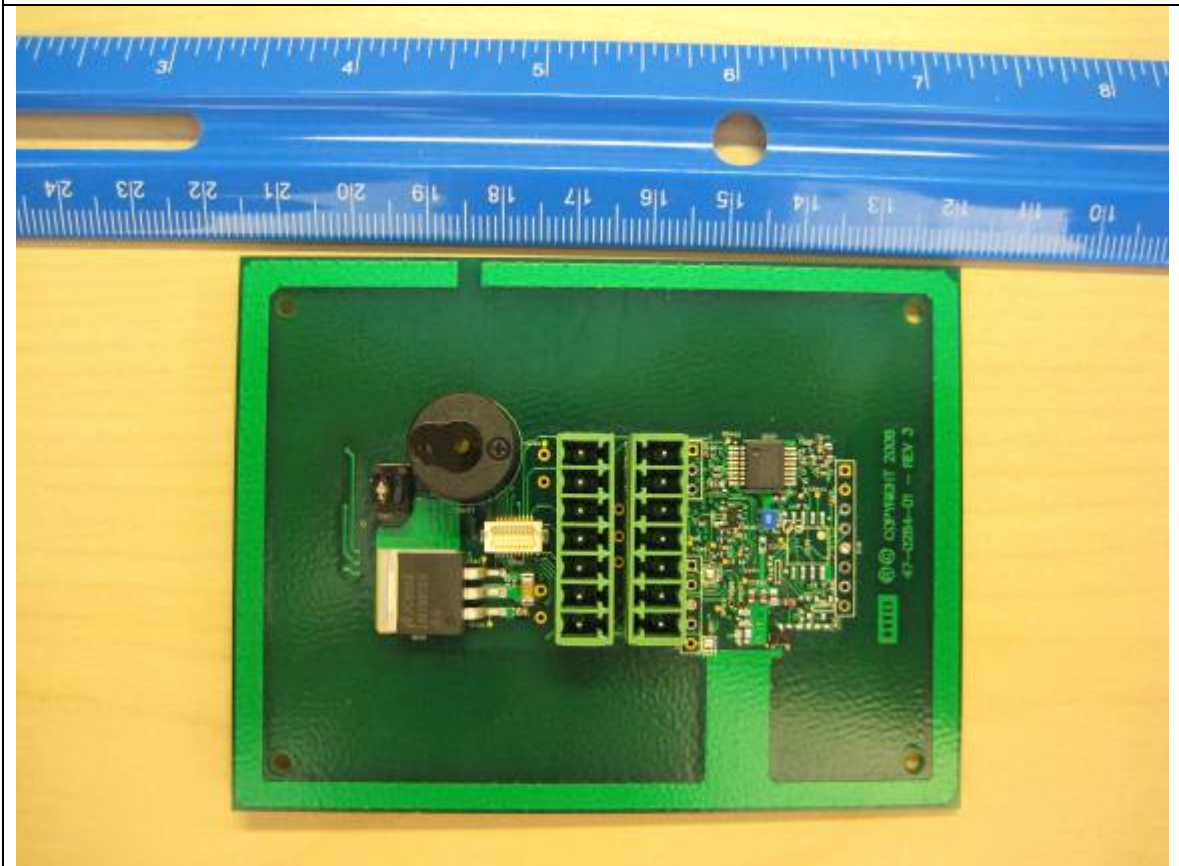
Reader Board in Plastic Housing – Not Potted



Plastic Housing after Reader Board Removed



Front side of Reader Board

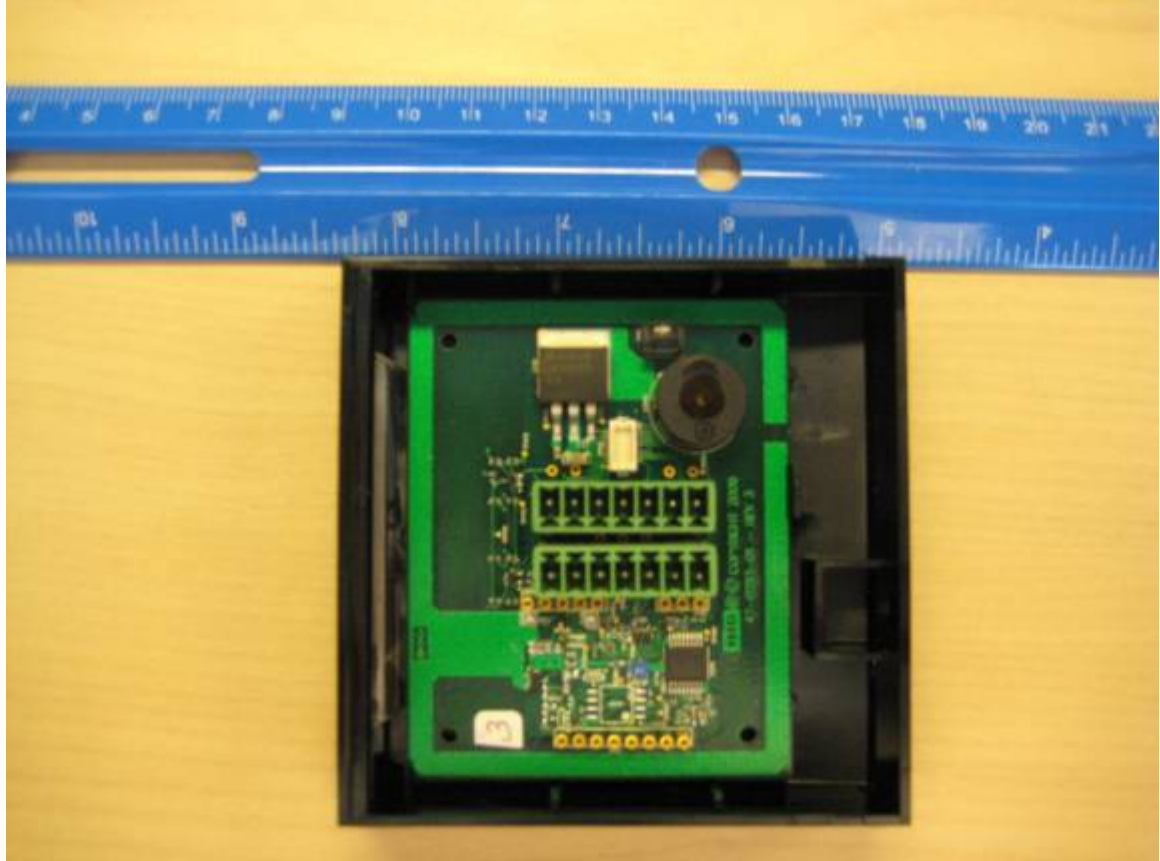


Back side of reader board with RF Section

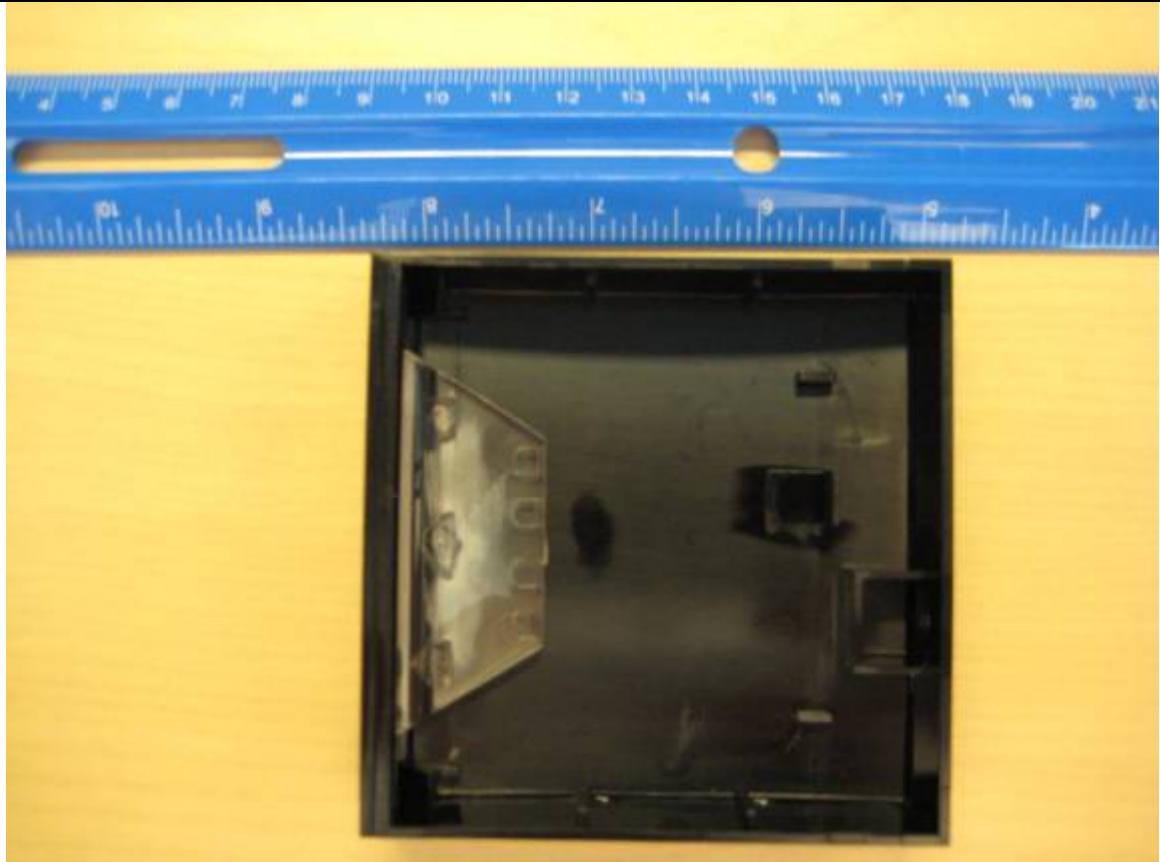


Reader Board in Plastic Housing – Potted

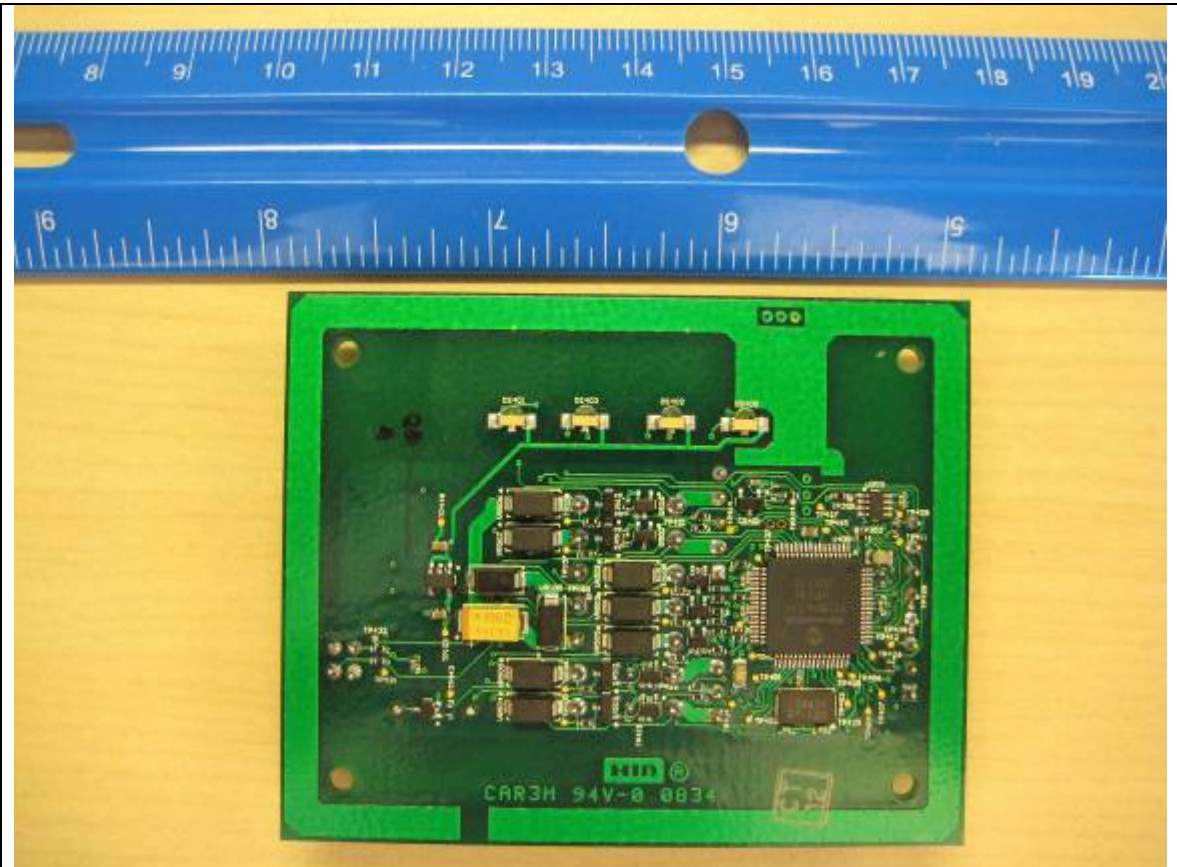
R30 Reader Type



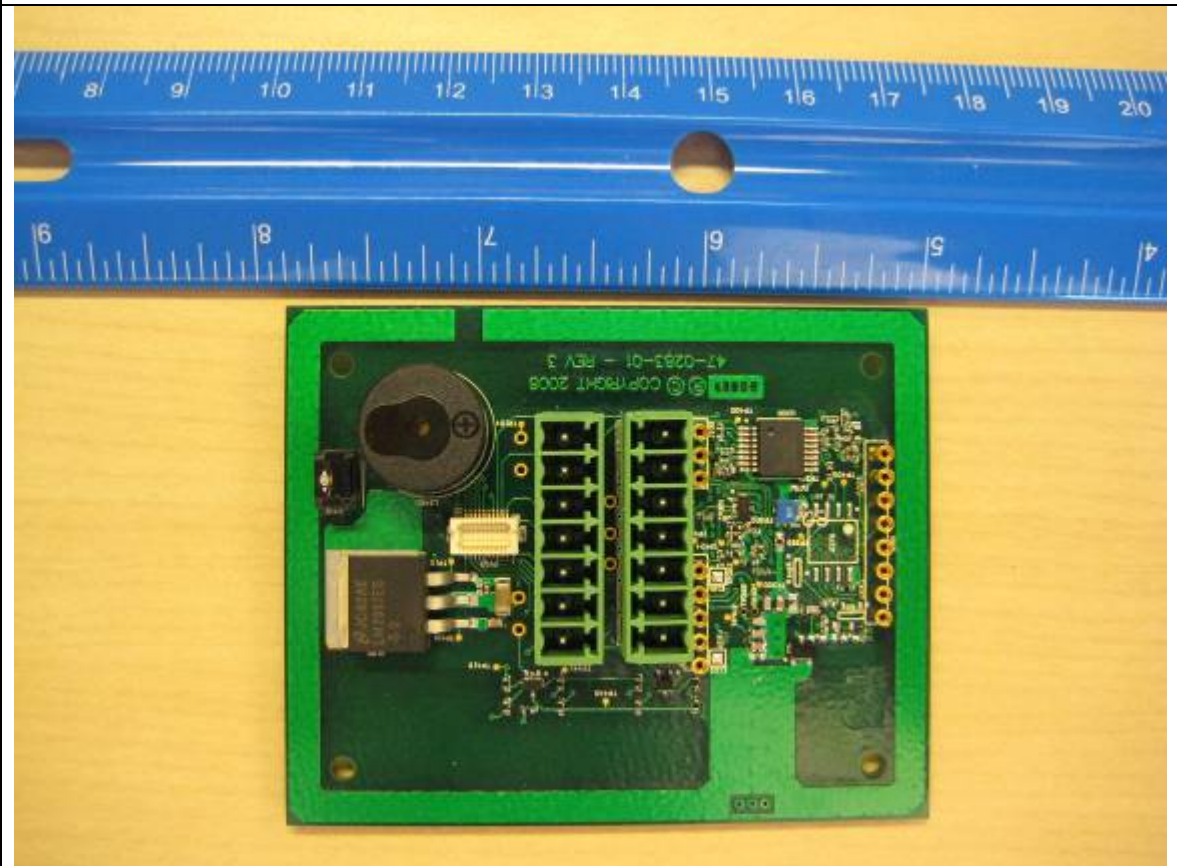
Reader Board in Plastic Housing – Not Potted



Plastic Housing after Reader Board Removed



Front side of Reader Board

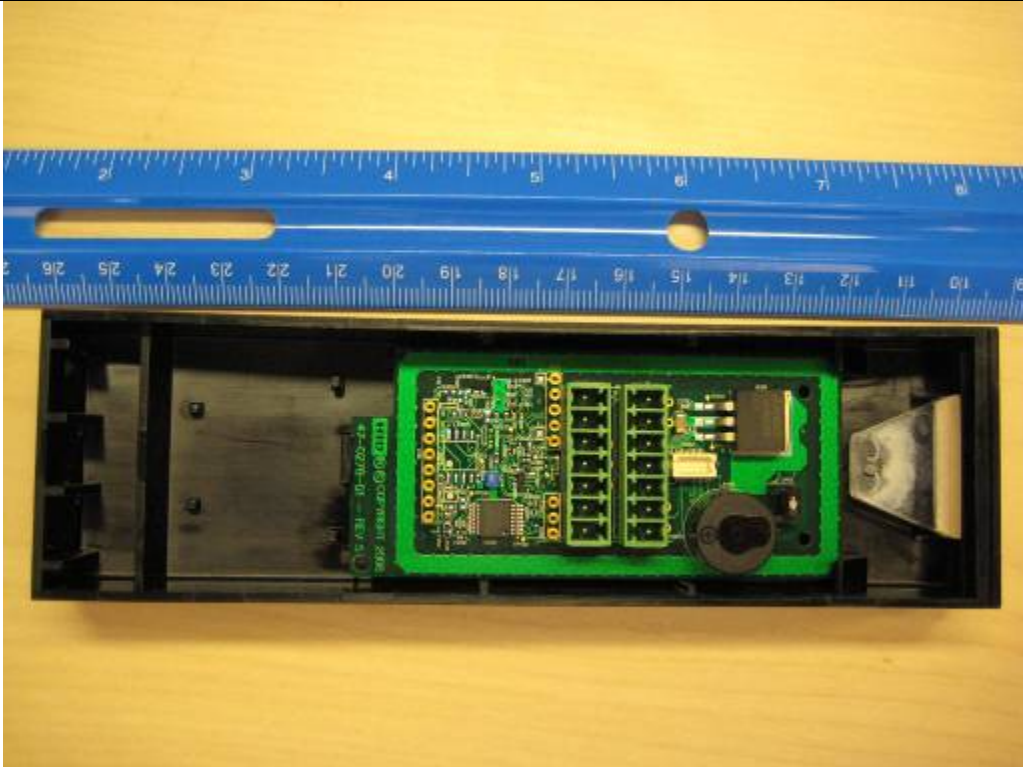


Back side of reader board with RF Section



Reader Board in Plastic Housing – Not Potted

R15 Reader Type – Internal Photos Utilizes same board as R10 – only in difference from R10 is plastic enclosure – therefore the board photos are contained within the R10 Section



Reader Board in Plastic Housing – Not Potted

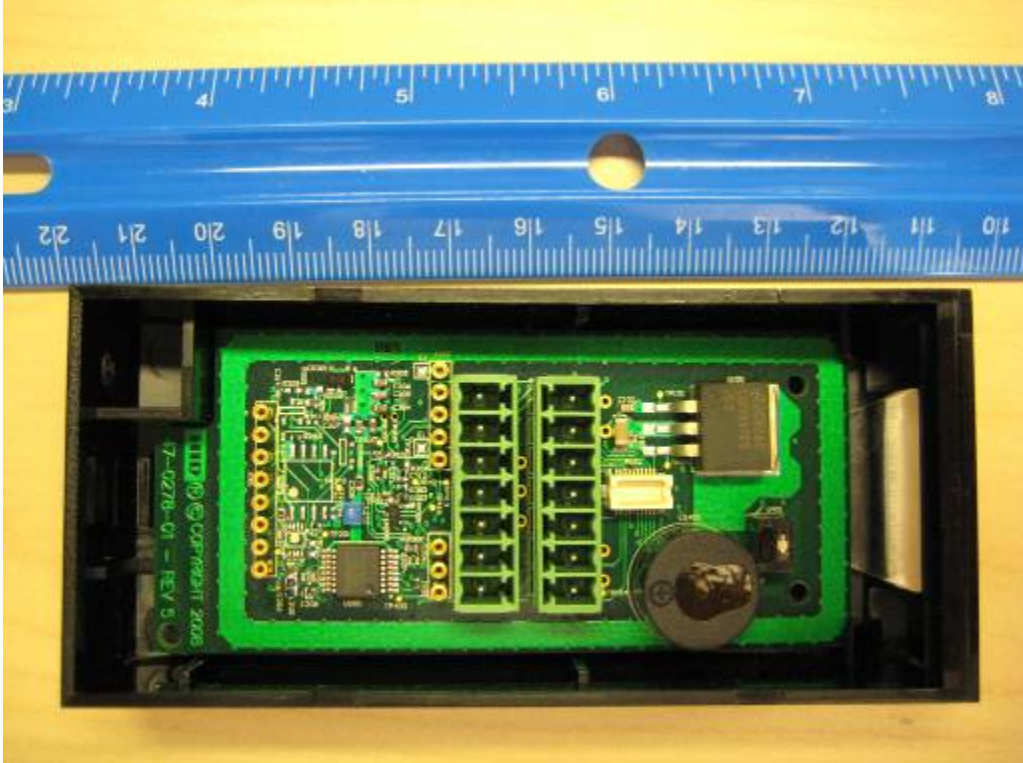


Plastic Housing after Reader Board Removed

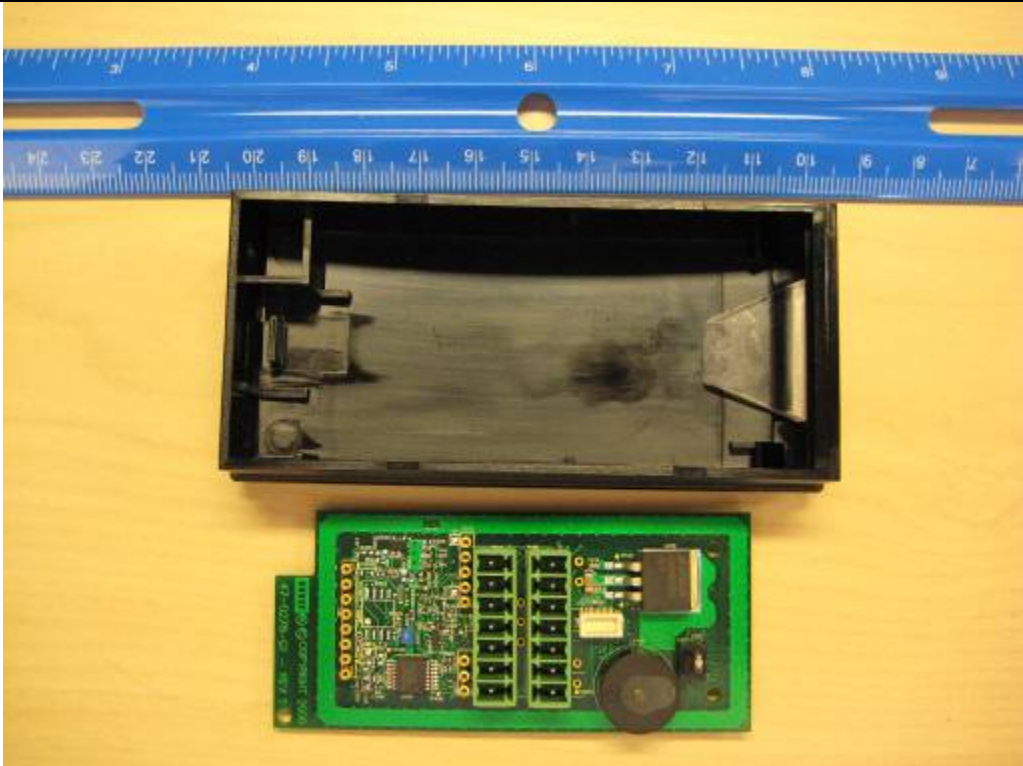


Reader Board in Plastic Housing – Potted

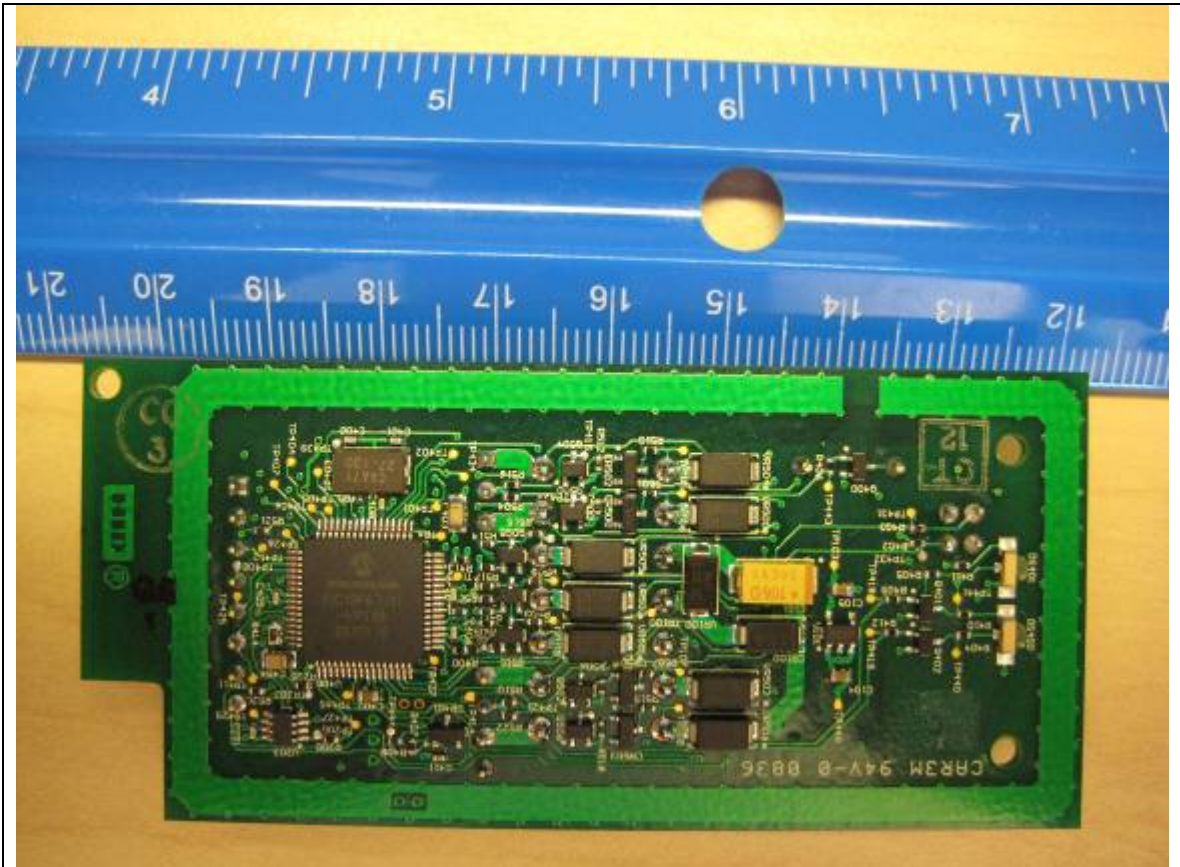
R10 Reader Type – Internal Photos



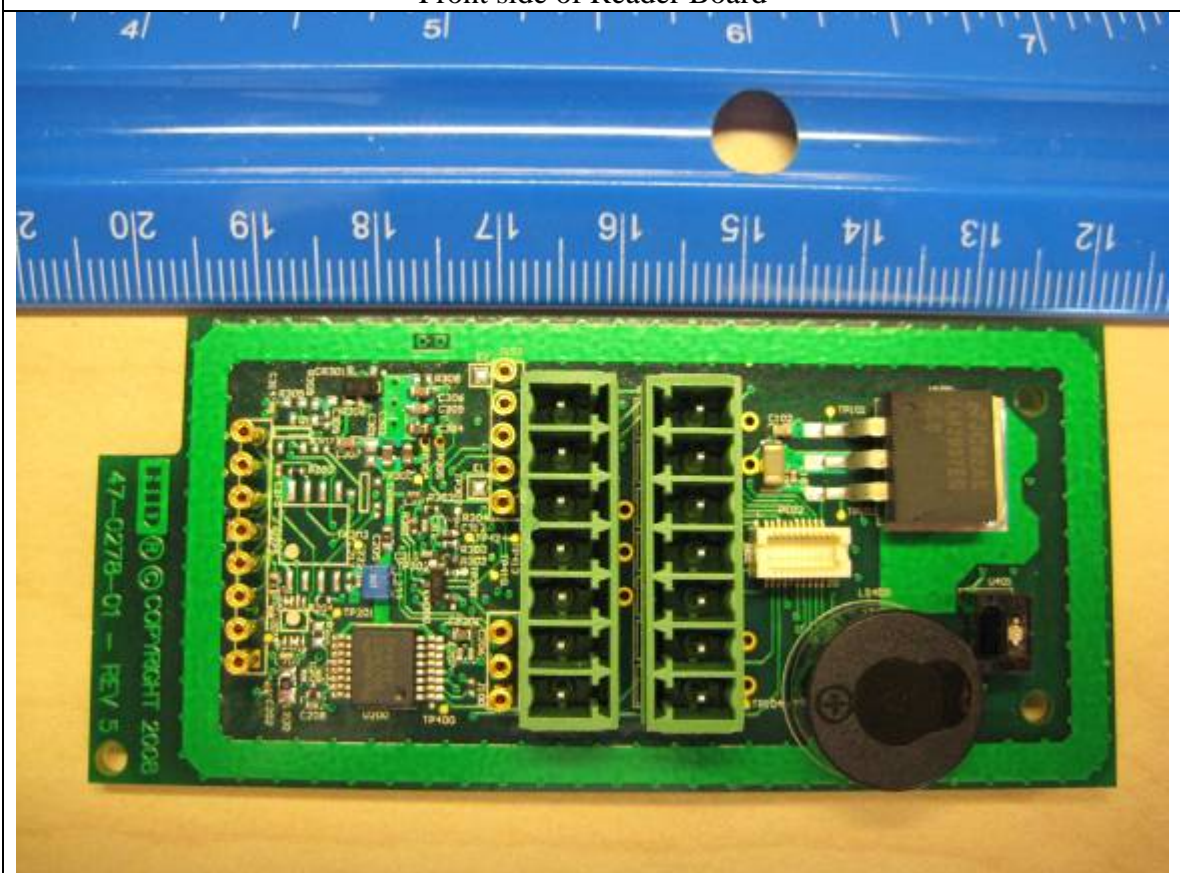
Reader Board in Plastic Housing – Not Potted



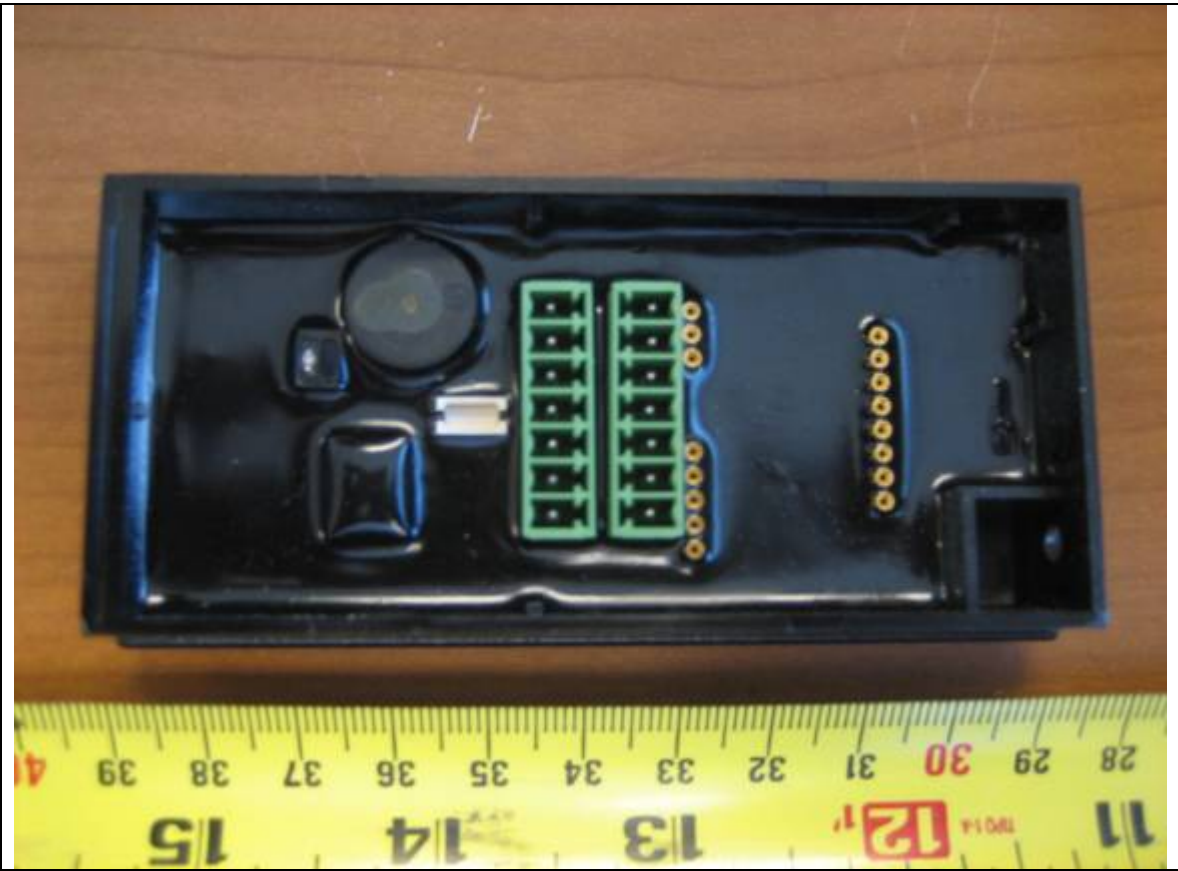
Plastic Housing after Reader Board Removed



Front side of Reader Board

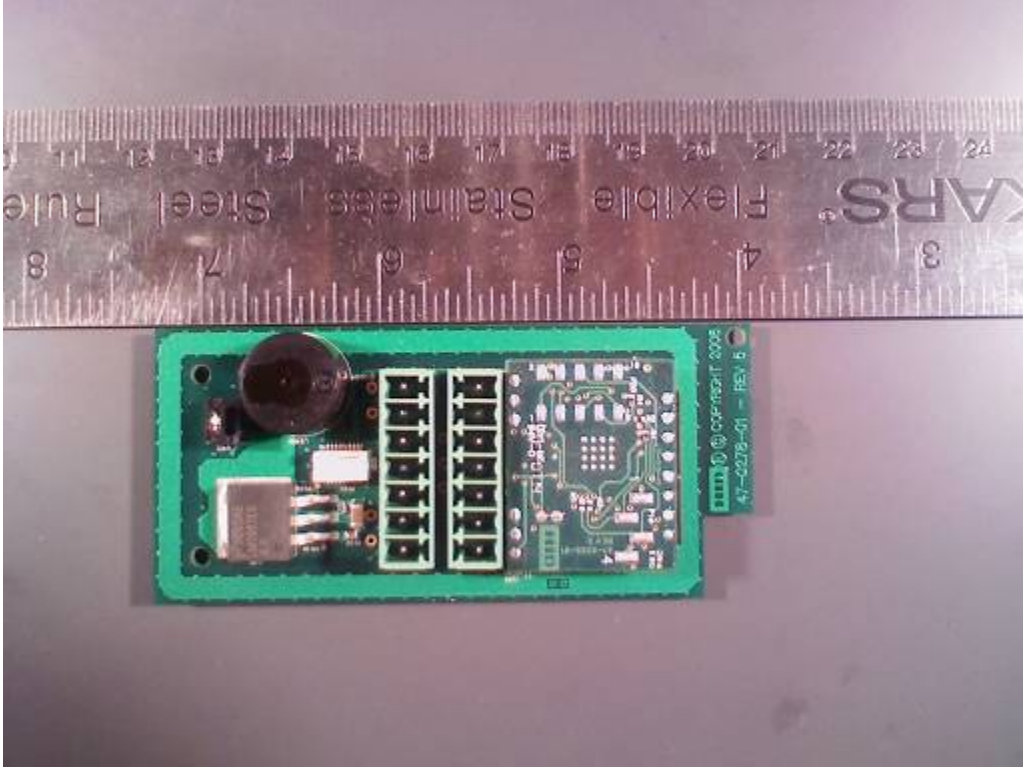


Back side of reader board with RF Section

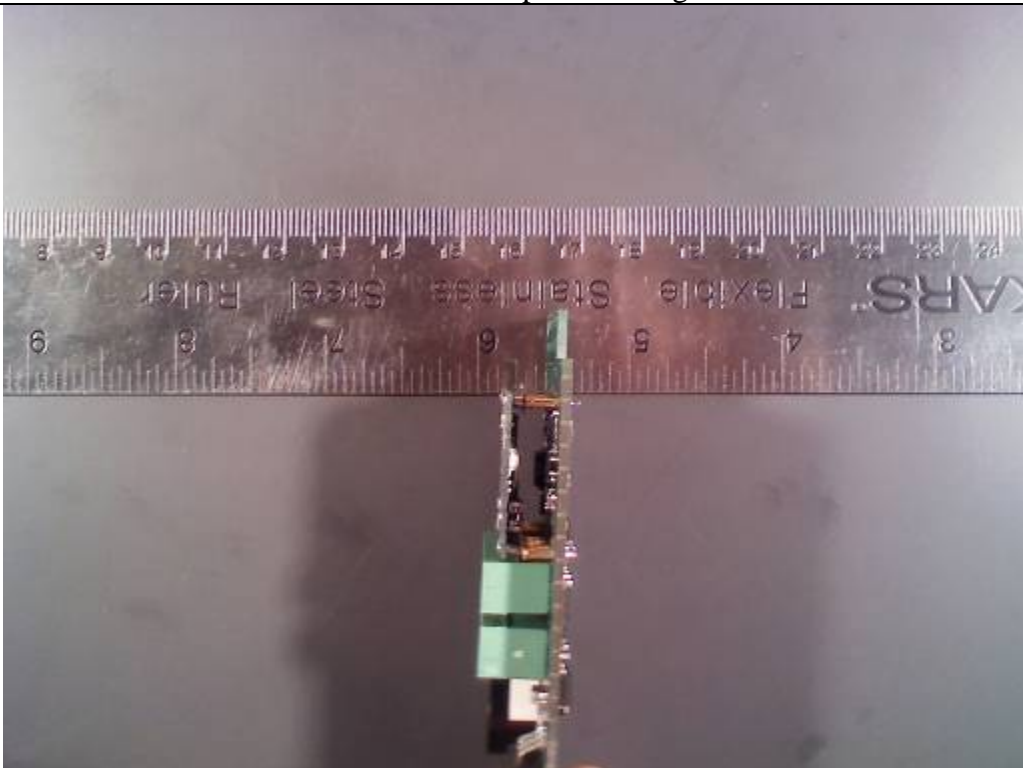


Reader Board in Plastic Housing – Potted

General Reader Section – Showing Optional Digital I/O board mounted on an R10/15 PWB – mounts on each board identically covering the RF section on each reader type.



Back side of reader board with Optional Daughter Card Mounted



Shows Dimension of Optional Daughter Card mounted on top of Reader Board