



Testing and certification of, consultancy and  
research concerning, electronic and electric  
appliances, systems, installations and  
telecommunication systems

---

**EXTERIOR PHOTOGRAPHS OF A 13.56 MHZ  
PASSPORT/OCR READER, BRAND @-PASSPORT,  
MODEL 800-8251, FCC ID: JQ6-EDOC**

FCC listed : 90828  
Industry Canada : IC3501A  
VCCI Registered : R-1518, C-1598  
R&TTE, LVD, EMC Notified Body : 1856

**TNO Electronic Products & Services (EPS) B.V.**  
**P.O. Box 15**  
**9822 ZG Niekerk (NL)**  
**Smidshornerweg 18**  
**9822 TL Niekerk (NL)**

Telephone: +31 594 505005  
Telefax: +31 594 504804

Internet: [www.tno-eps.com](http://www.tno-eps.com)  
E-mail: [info@tno-eps.com](mailto:info@tno-eps.com)



Description of EUT: 13.56 MHZ PASSPORT/OCR READER  
Manufacturer: HID Global Corporation / Integrated Engineering  
Brand mark: @-PASSPORT  
Model: 800-8251

---

### **Description of test item**

Test item : 13.56 MHZ PASSPORT/OCR READER  
Manufacturer : HIDIntegrated Engineering  
Brand mark : @-PASSPORT  
Model : 800-8251  
Serial number(s) : -

### **Applicant information**

Applicant's representative : Mr. R. Holslag / Todd Seeley  
Company : Integrated Engineering / HID Global Corporation  
Address : Paasheuvelweg 20 / 10385 Westmoor Drive Suite 300  
Postal code : 1105 BJ / 80021  
City : Amsterdam-Zuidoost / Westminster, CO  
Country : The Netherlands / USA  
Telephone number : +31 (0)20 4620755 / 1+ 303 404 6773  
Telefax number : +31 (0)20 4620756  
E-mail : [info@smart-ID.com](mailto:info@smart-ID.com) / [tseeley@hidglobal.com](mailto:tseeley@hidglobal.com)  
Internet : [www.smart-ID.com](http://www.smart-ID.com) / [www.hidglobal.com](http://www.hidglobal.com)



**Description of EUT:** 13.56 MHZ PASSPORT/OCR READER  
**Manufacturer:** HID Global Corporation / Integrated Engineering  
**Brand mark:** @-PASSPORT  
**Model:** 800-8251

---

## **Table of contents**

1	Photographs of the equipment.....	4
1.1	Overview.....	4
1.2	Front view.....	5
1.3	Rear view.....	6
1.4	Side view.....	7
1.5	Top view.....	8
1.6	Bottom view.....	9

## 1 Photographs of the equipment.

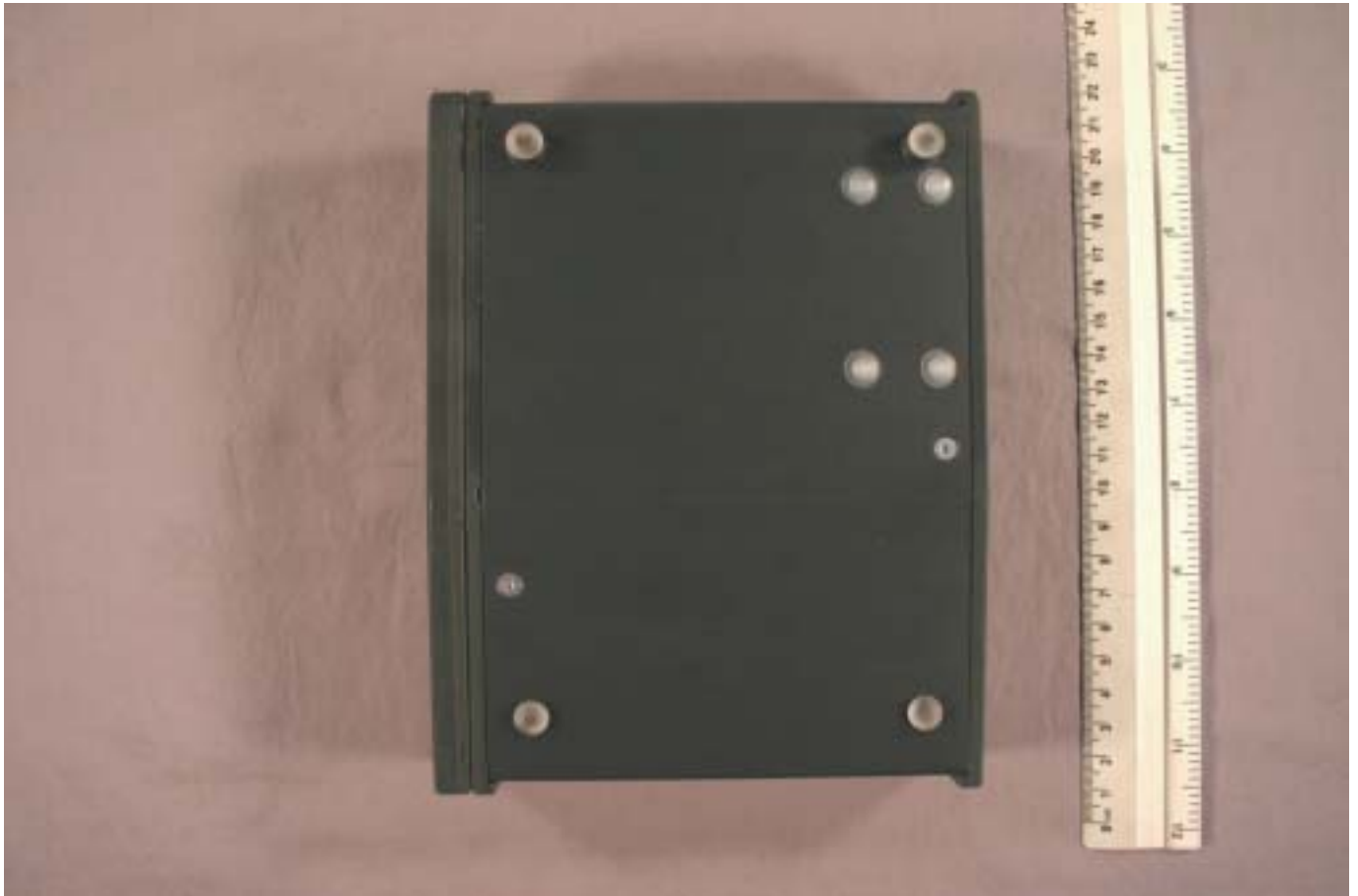
### 1.1 Overview.



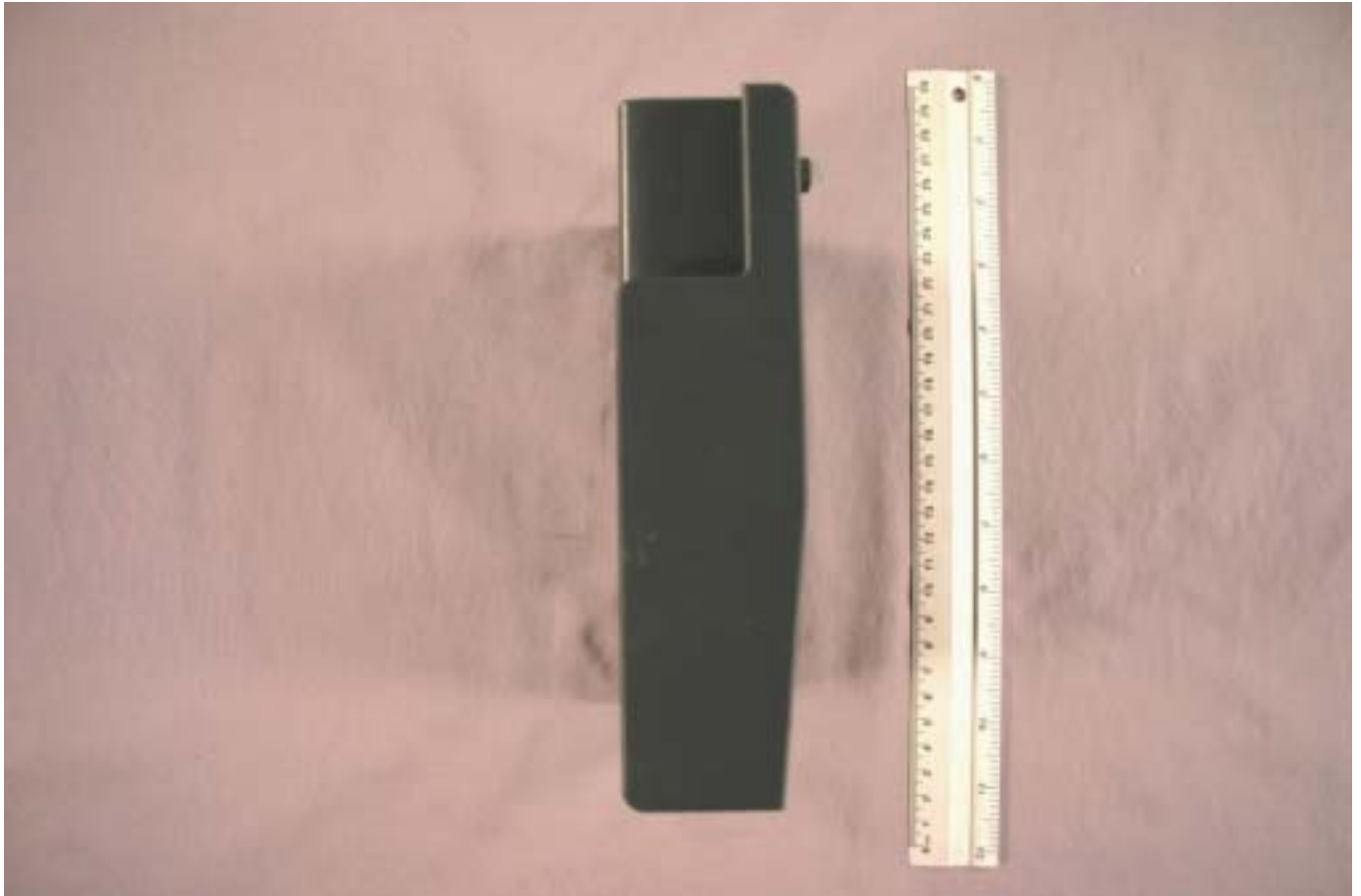
## 1.2 Front view.



### 1.3 Rear view



#### 1.4 Side view



### 1.5 Top view





## 1.6 Bottom view

