

RRST-ANF/HRST-ANF/ARST-ANF PCB Antenna Specification

Manufacturer: Lutron Electronics Co., Inc.

Tested By: Lutron Employee #575574

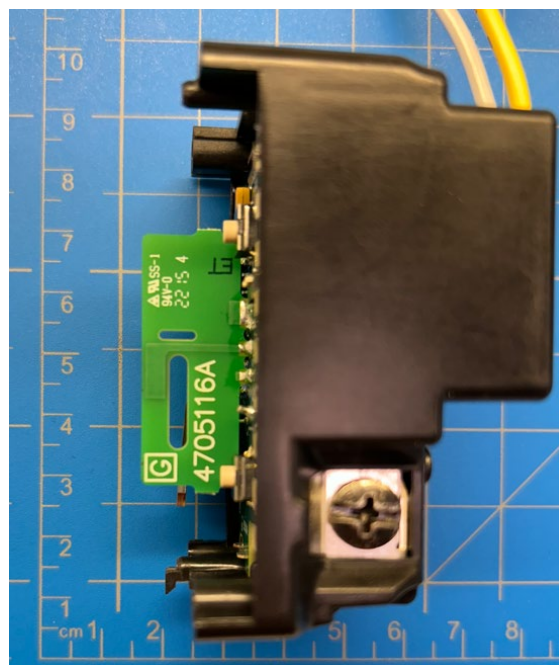
1. Antenna Construction

The antenna is a monopole PCB antenna. The antenna connection points are permanently attached to the DUT and cannot be modified or replaced by the user as it is underneath the plastic enclosure.

2. Antenna Characteristics

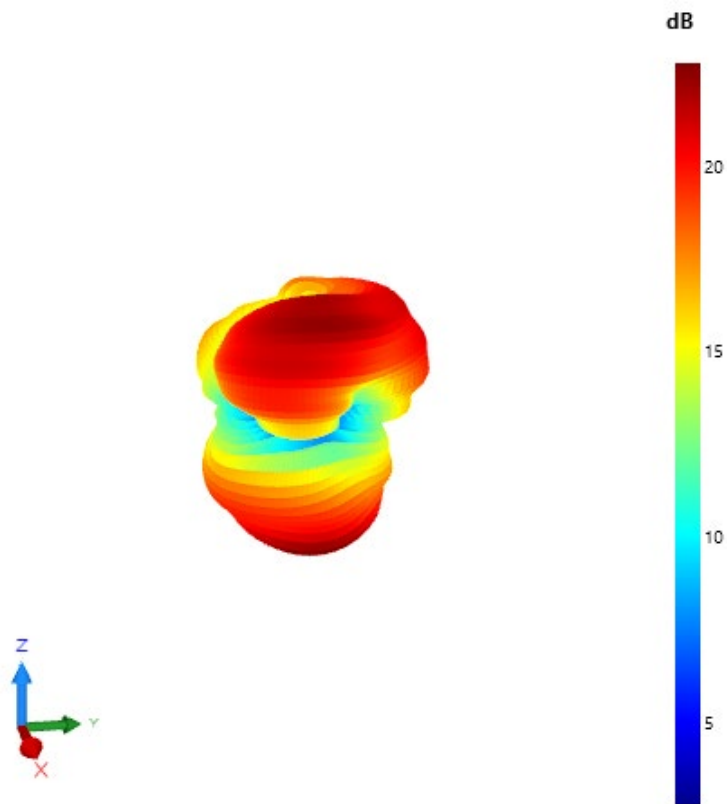
No.	Item	Specification
1	Type	Monopole
2	Connection Type	Permanently Attached
3	Bandwidth	2402~2480 MHz
4	Peak Gain	2.5 dBi

3. Antenna Picture





4. Peak Gain and Pattern



$$\text{Peak Gain dBi} = 22.3 \text{ dB} - 19.8 \text{ dBm} = +2.5 \text{ dBi}$$

5. Test Site and Procedure

The antenna gain is measured at Lutron Electronics, using MVG StarLab model SL V2_0.4-6GHz.

6. Equipment List

Description	Make and Model	Calibrated	Calibration Due
Starlab Test Setup	Starlab SL V2_0.4-6GHz	12/22/2022	12/21/2023
RF Power Sensor	R&S NRPS8	7/18/2023	7/18/2025

7. Test Setup Photo

