



Fan Control

Please read before installing

English

HomeWorks Fan Control

HRST-ANF, ARST-ANF
120 V ~ 50/60 Hz 1.5 A
AC fan only

IMPORTANT NOTES

- For indoor use only.
- Operate between 32°F (0°C) and 104°F (40°C).
- Use to control one paddle-type ceiling fan.
- Use the ceiling fan's pull chain to set its speed to the highest setting.
- Do not use to control exhaust fans (e.g. bathroom or kitchen exhaust fans).
- Do not use to control fans that have integrated fan speed controls other than a pull chain (i.e. fans that have a remote control), unless the integrated control is removed from the ceiling fan.
- Do not connect to any other motor-operated appliance or to any lighting load type.
- Do not use to control lighting loads on a fan.
- Do not use to control DC motor fans.

Help

Use our mobile friendly self-paced installation tool:

www.lutron.com/wiringwizard

Find more product information:
www.lutron.com/support

- Videos
- Frequently Asked Questions

Call us:

U.S.A. | Canada | Caribbean
1.844.LUTRON1 (588.7661) (24/7)

Mexico
+1.888.235.2910

Others
+1.610.282.3800

www.lutron.com/support

This device complies with part 15 of the FCC Rules and Industry Canada license-exempt RSS standard(s). Operation is subject to the following two conditions:
(1) This device may not cause interference, and
(2) This device must accept any interference, including interference that may cause undesired operation. Modifications not expressly approved by Lutron Electronics Co., Inc. could void the user's authority to operate this equipment.
NOTE: This equipment has been tested and found to comply with the limits for a Class B digital device, pursuant to part 15 of the FCC Rules. These limits are designed to provide reasonable protection against harmful interference in a residential installation. This equipment generates, uses and can radiate radio frequency energy and, if not installed and used in accordance with the instructions, may cause harmful interference to radio communications. However, there is no guarantee that interference will not occur in a particular installation. If this equipment does cause harmful interference to radio or television reception, which can be determined by turning the equipment off and on, the user is encouraged to try to correct the interference by one or more of the following measures:
• Reorient or relocate the receiving antenna.
• Increase the separation between the equipment and receiver.
• Connect the equipment into an outlet on a circuit different from that to which the receiver is connected.
• Consult the dealer or an experienced radio/TV technician for help.

This equipment complies with FCC/ISED radiation exposure limits set forth for an uncontrolled environment. The user should avoid prolonged exposure within 7.9 in (20 cm) of the antenna, which may exceed FCC/ISED radio frequency exposure limits.

This Class B digital apparatus complies with Canadian ICES-003. Lutron, the Starburst Logo, FASS and Sunnata are trademarks or registered trademarks of Lutron Electronics Co., Inc. in the US and/or other countries. All other product names, logos, and brands are property of their respective owners.

© 2024 Lutron Electronics Co., Inc



Installing your fan control

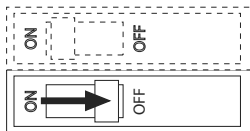
1 Install the fan

Install the fan according to the manufacturer's instructions and ensure proper operation.

2 Set the fan speed

Set the fan to the **highest speed** using the pull chains.

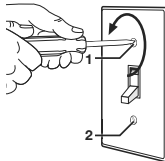
3 Turn power off at circuit breaker!



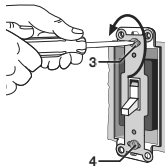
WARNING: SHOCK HAZARD.
May result in serious injury or death. Turn off power at circuit breaker or fuse before installing.

4 Remove existing switch from wall

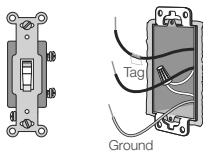
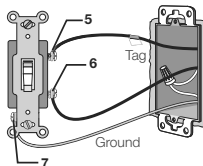
Remove the wallplate from the switch.



Remove the switch and pull it away from the wall.



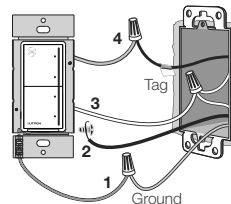
Place tag on load wire. Disconnect all three wires* from the switch.



5 Load Ratings (if ganging devices)

	Maximum Allowable Wattage		
	Single Gang	End of Gang	Middle of Gang
FAN	1.5 A	1.5 A	1.5 A

6 Connect the fan control



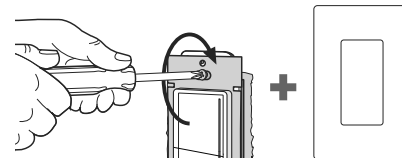
1 Connect the bare copper (or green) "ground" wire from the wallbox to the green wire on the fan control using a wire connector.

2 Wrap line/hot wire around screw terminal. Tighten securely to 5 in-lb (0.55 N•m).

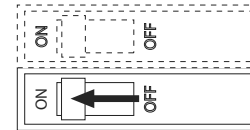
3 Connect the neutral wire from the wallbox to the white wire on the fan control using a wire connector.

4 Connect the load/tagged wire from the wallbox to the yellow wire on the fan control using a wire connector.

7 Mount the fan control



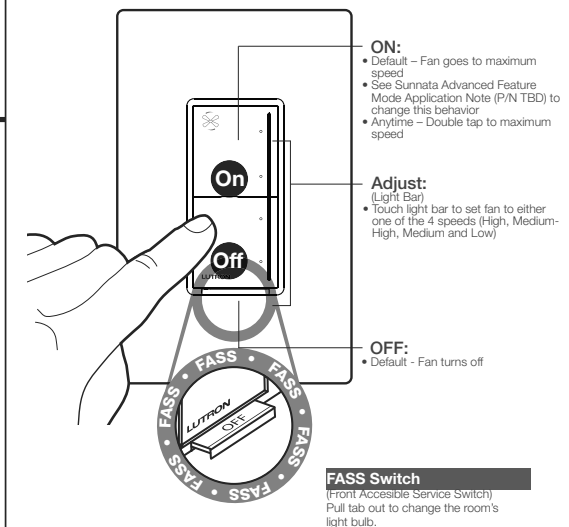
8 Turn power on at circuit breaker



9 Set-Up with system

For use in a HomeWorks system, please refer to www.lutron.com/HWsupport. For reliable performance in a system, Clear Connect-Type X devices must be placed within 25 ft (7.6 m) of two additional compatible Clear Connect-Type X devices. Clear Connect-Type X devices include, for example, HomeWorks Sunnata dimmer, switch, keypad and HomeWorks wireless processor/gateway devices. Companion devices are excluded from the list of compatible devices because they are not Clear Connect-Type X devices. Companion devices have wired communication with the main device. For more information please refer to the Wireless Setup guide: www.lutron.com/HWsupport

Operation



Troubleshooting

Symptoms	Probable cause and action
Fan does not turn ON and no indicator lights turn ON.	<ul style="list-style-type: none"> Ensure that the fan pull chain is set to highest possible setting. Load and Line wires may be reversed. Swap wires that are attached to the yellow wire and black screw terminal on the fan control. Refer to wiring diagram in step 6. Neutral wire is not connected. Refer to wiring diagram in step 6. Front Accessible Service Switch (FASS) is in the OFF position. Push FASS in to the ON position. Breaker is OFF or tripped (or fuse blown). Reset breaker or replace fuse. If condition persists, contact Lutron Customer Assistance or a licensed electrician.
Fan does not turn ON and indicator lights are ON.	Fan direction switch is between forward and reverse. Set switch to desired position.
Fan speed is too slow.	Set fan pull chain speed to high.
Only the high speed appears to be working.	Sunnata fan is designed to work with AC fan only. Confirm with the fan manufacturer.

CAUTION

Use only with permanently installed ceiling fans. To avoid overheating and possible damage to other equipment, do not use to control receptacles, motor-driven appliances, or transformer-supplied appliances.

Codes

Install in accordance with all national and local electrical codes.

Grounding

When no "grounding means" exist in wallbox, the National Electrical Code (NEC) allows a control to be installed as a replacement if 1) a nonmetallic, noncombustible faceplate is used with nonmetallic attachment screws or 2) the circuit is protected by a ground fault circuit interrupter (GFCI). When installing a control according to these methods, cap or remove green wire before screwing control into wallbox.