

Dimmer

P/N 044387 REV A

Please read before installing.

English

Models

ARST-H, HRST-H,
MRST-H, RRST-H

Ratings

Help

Use our mobile friendly self-paced installation tool:

www.lutron.com/wiringwizard

Find more product information:

www.lutron.com/support

- Videos
- Frequently Asked Questions

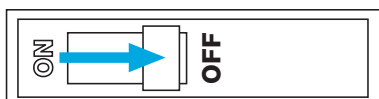
Call us:

U.S.A. | Canada | Caribbean
1.844.LUTRON1 (588.7661) (24/7)

Mexico
+1.888.235.2910

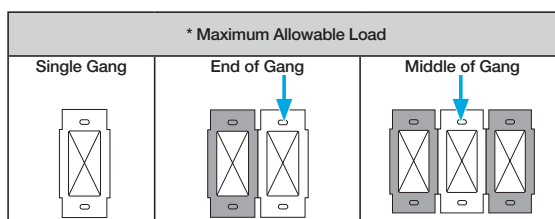
Others
+1.610.282.3800

1 Turn power OFF at circuit breaker



WARNING: ELECTRIC SHOCK HAZARD.
May result in Serious Injury or Death. Turn off power at circuit breaker or fuse before installing.

2 Load types and operation



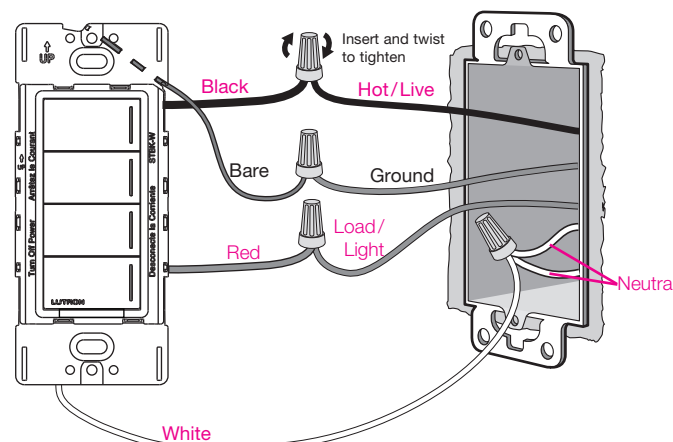
¹ See Section 7 on page 2 of this guide for phase-select instructions.

Note: For dimming MLV fixtures, the maximum lamp wattage is typically 70%-85% of the transformer's VA rating. For actual transformer efficiency, contact the manufacturer. The total VA rating of the transformer(s) shall not exceed the VA rating of the dimmer.

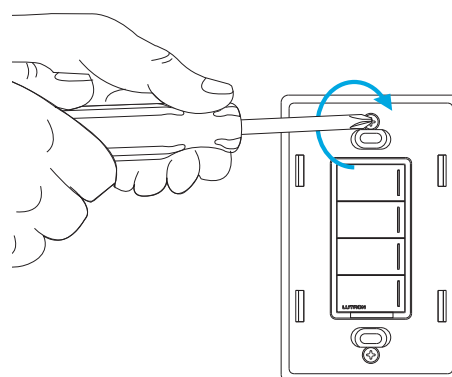
IMPORTANT

- CAUTION:** Use only with permanently installed fixtures with dimmable screw-in LED, dimmable self-ballasted compact fluorescent, halogen, or incandescent lamps. Use only to control the primary side of permanently installed transformer supplied low-voltage lighting, or in combination with incandescent lamps. To reduce the risk of overheating and possible damage to other equipment DO NOT use to control receptacles, fluorescent lighting fixtures, non-ballasted or externally ballasted compact fluorescent lamps, motor operated appliances or transformer supplied appliances.
- Neutral is required for all load types.
- When no "grounding means" exist within the wallbox, the NEC® 2011, Article 404.9 allows a dimmer without a grounding connection to be installed as a replacement, as long as a plastic, noncombustible wallplate is used. For this type of installation, twist a wire connector onto the green ground wire or remove the green ground wire on the dimmer and use an appropriate wallplate such as Claro or Satin Colors series wallplates by Lutron.
- Protect from dust and dirt when painting or spackling the wall.
- It is normal to feel warm to the touch during operation.
- Codes:** Install in accordance with all local and national electrical codes. Type 1 action independently mounted operating control. Pollution degree 2, Impulse voltage 4 kV.
- Environment:** Ambient operating temperature: 32 °F to 104 °F (0 °C to 40 °C), 0 to 90% humidity, non-condensing. Indoor use only.
- Wallplates:** Use only Lutron wallplates with these keypads. The mechanical design of the keypad may not be compatible with non-Lutron wallplates. Non-Lutron wallplates may not sit flush against the wall. Claro and Satin Colors wallplates are designed for best color match and clean aesthetic appearance. Do not paint controls, buttons, or wallplates.
- Cleaning:** For disinfecting keypad, please refer to App Note #758 (048758). **Wallboxes:** require a U.S. wallbox, 3 1/2 in (89 mm) deep recommended, 2 1/4 in (57 mm) deep minimum.

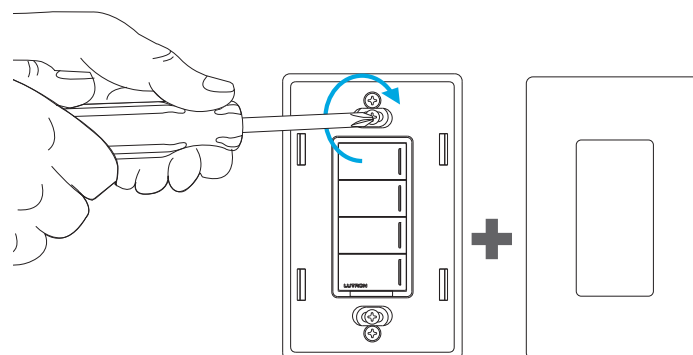
3 Wire the control



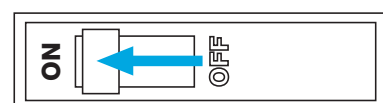
4 Mount the wallplate adapter



5 Mount the keypad and attach the wallplate



6 Turn power ON at circuit breaker



Return to factory settings

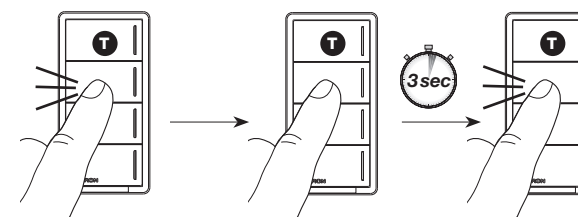
Note: Returning a keypad to its factory settings will remove the keypad from the system and erase all programming.

Step 1: Triple tap any button on the keypad (except raise/lower). DO NOT release after third tap.

Step 2: Keep the button pressed on the third tap until all the status LEDs start to flash slowly (approximately 3 seconds).

Step 3: Immediately release the button and triple tap the button again. The status LEDs on the keypad will flash quickly.

The keypad has now been returned to its factory settings.



FCC/IC/IFT Information

This device complies with part 15 of the FCC Rules and Industry Canada license-exempt RSS standard(s). Operation is subject to the following two conditions:

- (1) This device may not cause interference, and
- (2) This device must accept any interference, including interference that may cause undesired operation. Modifications not expressly approved by Lutron Electronics Co., Inc. could void the user's authority to operate this equipment.

NOTE: This equipment has been tested and found to comply with the limits for a Class B digital device, pursuant to part 15 of the FCC Rules. These limits are designed to provide reasonable protection against harmful interference in a residential installation. This equipment generates, uses and can radiate radio frequency energy and, if not installed and used in accordance with the instructions, may cause harmful interference to radio communications. However, there is no guarantee that interference will not occur in a particular installation. If this equipment does cause harmful interference to radio or television reception, which can be determined by turning the equipment off and on, the user is encouraged to try to correct the interference by one or more of the following measures:

- Reorient or relocate the receiving antenna
- Increase the separation between the equipment and receiver
- Connect the equipment into an outlet on a circuit different from that to which the receiver is connected
- Consult the dealer or an experienced radio/TV technician for help.

This equipment complies with FCC/IC radiation exposure limits set forth for an uncontrolled environment. The user should avoid prolonged exposure within 7.9 in (20 cm) of the antenna, which may exceed FCC/IC radio frequency exposure limits.

This Class B digital apparatus complies with Canadian ICES-003.

French Translation

FCC/IC/IFT Information

Cet appareil est conforme à la partie 15 des règles du FCC et aux normes industrielles RSS d'exemption de licence du Canada. Le fonctionnement est sous réserve des deux conditions suivantes :

- (1) Cet appareil ne doit pas provoquer d'interférences, et
- (2) Cet appareil doit accepter toutes les interférences, y compris les interférences qui pourraient provoquer un fonctionnement indésirable. Les modifications qui n'ont pas été expressément approuvées par Lutron Electronics Co., Inc. peuvent annuler le pouvoir de l'utilisateur d'utiliser cet équipement.

REMARQUE : Cet équipement a été testé et est conforme aux limites d'un appareil numérique de Classe B en vertu de la partie 15 des règles de la FCC. Ces limites sont conçues pour fournir une protection raisonnable face aux interférences nuisibles dans une installation résidentielle. Cet équipement génère, utilise et peut émettre une énergie de fréquence radio et, s'il n'est pas installé et utilisé conformément aux instructions, il peut provoquer des interférences nuisibles aux communications radio. Cependant, il n'y a aucune garantie que des interférences ne surviendront dans une installation particulière. Si cet équipement provoque des interférences nuisibles pour la réception radio et télévisuelle, ce qui peut être déterminé en allumant et en éteignant l'équipement, il est recommandé que l'utilisateur tente de corriger ces interférences en utilisant une ou plusieurs des mesures suivantes :

- Réorientez ou repositionnez l'antenne réceptrice
- Augmentez la séparation entre l'équipement et le récepteur
- Connectez l'équipement à une prise électrique se trouvant sur un circuit différent de celui où le récepteur est connecté
- Demandez l'aide du vendeur ou d'un technicien radio/TV expérimenté

Pour garantir la conformité aux exigences d'exposition RF de la FCC/IC et d'ISED Canada, cet appareil doit être installé de manière à laisser un minimum de 20 cm (7,9) entre l'appareil et les personnes. Cet appareil numérique de classe B est conforme à la norme ICES-003 du Canada.

www.lutron.com/support

Limited Warranty:

www.lutron.com/TechnicalDocumentLibrary/Warranty.pdf

For FCC/IC information:

Please visit: www.lutron.com/fcc-ic

©2022 Lutron Electronics Co., Inc.