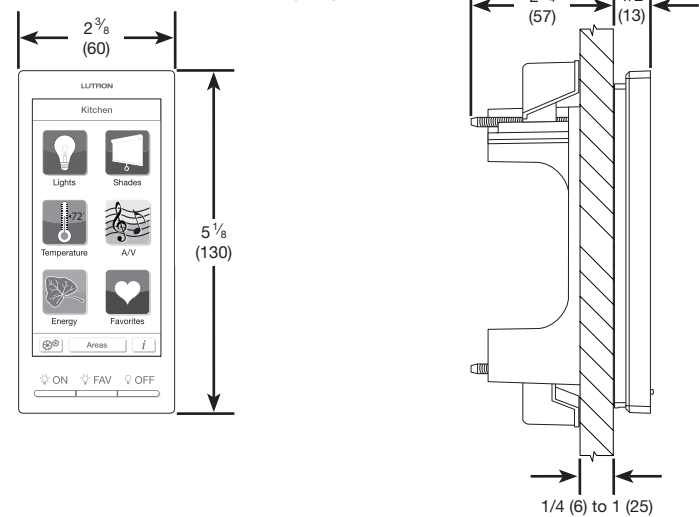


Dynamic Keypads
 HQ-J-DK420-WH (434 MHz)
 HQ-J-DK420-BL (434 MHz)
 24 V $\overline{=}$ 113 mA
 IEC PELV / NEC \circ Class 2
 Typical Power Consumption*: 1.5 W

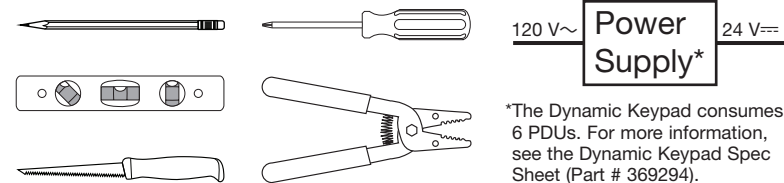
Installation Instructions
 Please Read Before Installing

Included in box

Measurements shown as: in (mm)



Required for Installation (Not Included)



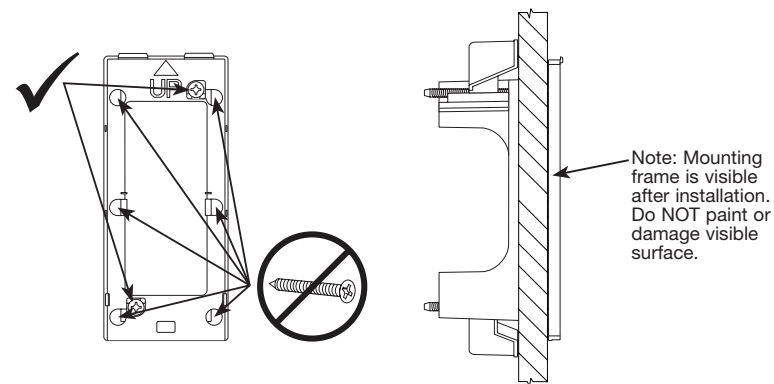
Important Notes

Environment: Ambient operating temperature: 32 °F to 104 °F (0 °C to 40 °C), 0 to 90% humidity, non-condensing. Indoor use only.

Cleaning: To clean, wipe with a clean damp cloth. DO NOT use any chemical cleaning solutions.

RF Device Placement: RF devices must be located within 30 ft (9 m) of an RF signal repeater.

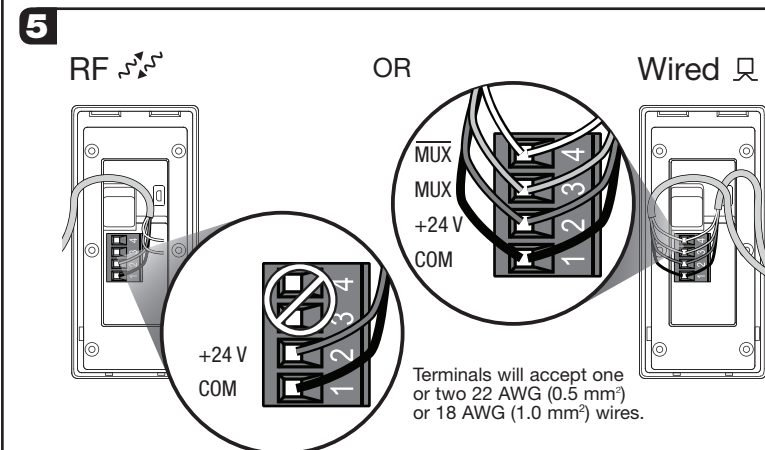
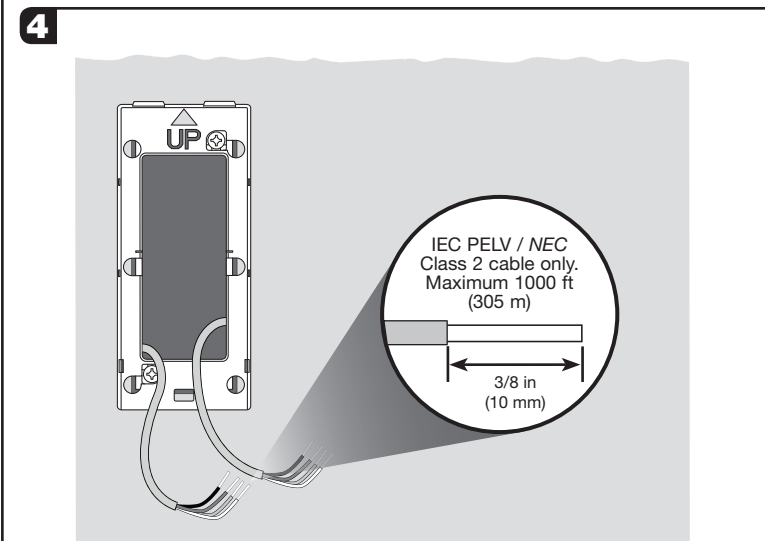
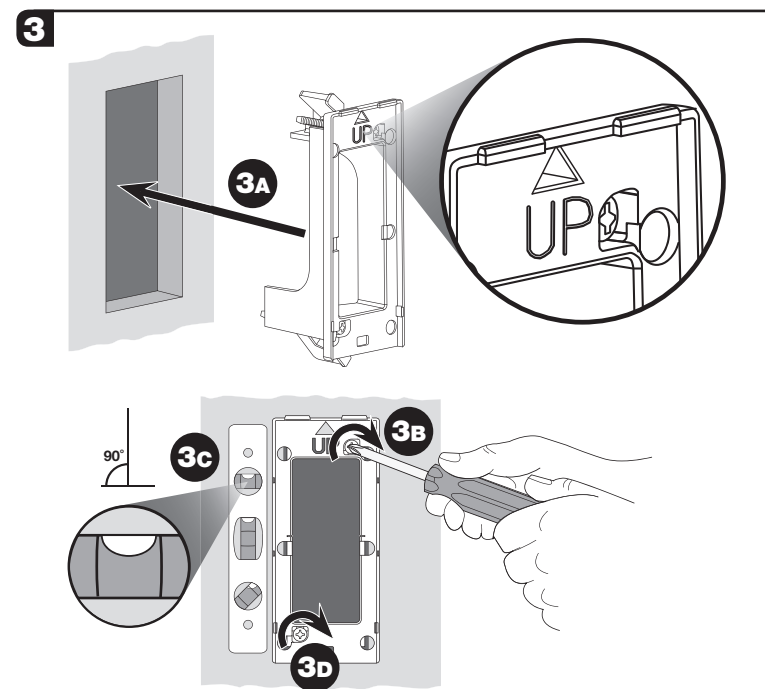
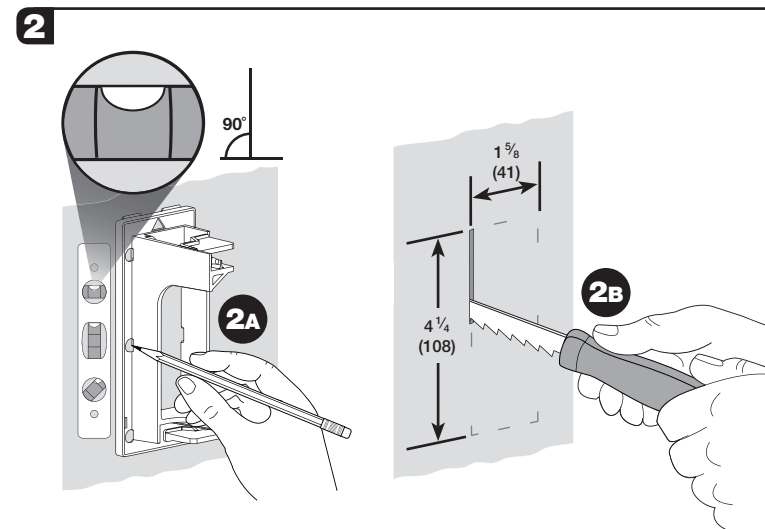
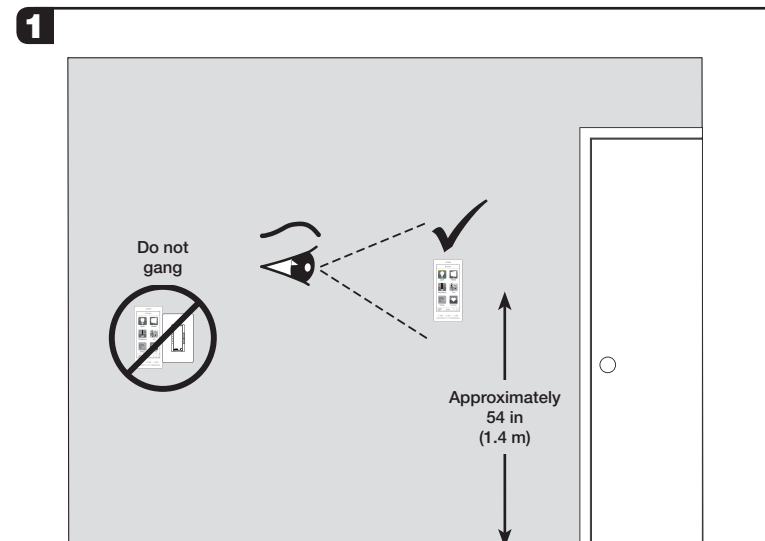
Mounting frame: A custom mounting frame is included with the Dynamic Keypad. Only use the screws provided with the mounting frame.



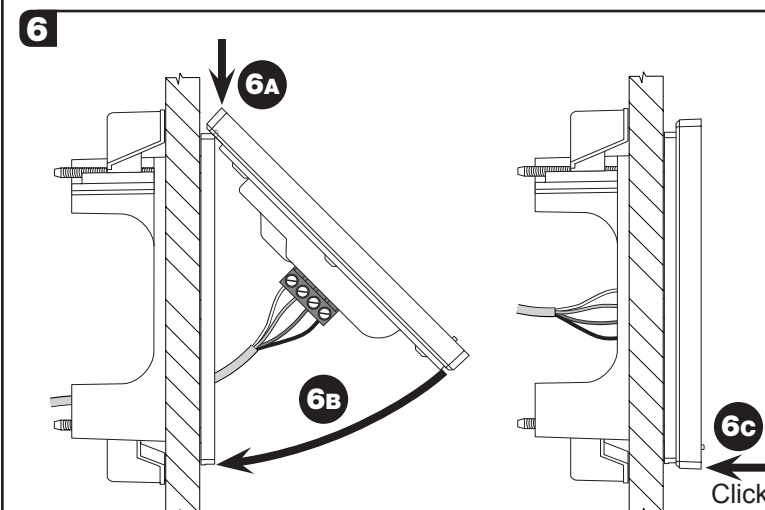
*Typical Power Consumption test conditions: LCD backlight on at 80%, buttons backlight on at 28%, normal standby mode.

Technical Assistance:
 U.S.A. / Canada: 1.800.523.9466
 Mexico: +1.888.235.2910
 Other Countries: +1.610.282.3800
 24 hours a day, 7 days a week.

Installation



NOTICE: Do NOT connect to line/mains voltage.



Troubleshooting Guide

Symptom	Probable Cause and Action
Backlight does not turn on when screen is touched. Nothing is displayed on the screen.	<ul style="list-style-type: none"> Power not present at keypad Circuit breaker OFF. Turn ON breaker.
Blue Lutron® screen with "Maintenance" or "Startup failure" at the bottom.	<ul style="list-style-type: none"> Incorrect wiring. Wire the keypad according to the Installation section.
The Dynamic Keypad does not control dimmers, shades or other system devices.	<ul style="list-style-type: none"> Startup failure. Cycle power to the device. If symptom persists, contact <i>Lutron</i> Technical Support.
All LEDs on the keypad flash when any button is pressed.	<ul style="list-style-type: none"> The device is in the Factory Default Settings mode and has not been activated into the system. Use the HomeWorks QS software to verify activation or re-activate the device and transfer its database. Device is not communicating with the system. Device is out of range of an RF signal repeater. Device is not properly programmed. Program the device using the HomeWorks QS software
All LEDs on the keypad flash when any button is pressed.	<ul style="list-style-type: none"> The device is in the Factory Default mode and has not been activated into the system. Use the <i>HomeWorks</i> QS software to verify activation or re-activate the device and transfer its database.
The Dynamic Keypad does not enter addressing mode.	<ul style="list-style-type: none"> The Dynamic Keypad is not configured for RF communication. Use the information screen on the Dynamic Keypad to verify that it is configured for RF communication. Ensure MUX (pin 3) and $\overline{\text{MUX}}$ (pin 4) are not connected.
The Dynamic Keypad does not snap onto the mounting frame as indicated in step 6c.	<ul style="list-style-type: none"> The mounting frame screws may be too tight (Step 3B & 3D). Remove the Dynamic Keypad, loosen the mounting frame screws and repeat step 6.

Returning Dynamic Keypads to Factory Settings

Returning Dynamic Keypads to Factory Settings will remove them from the system and erase all programming.

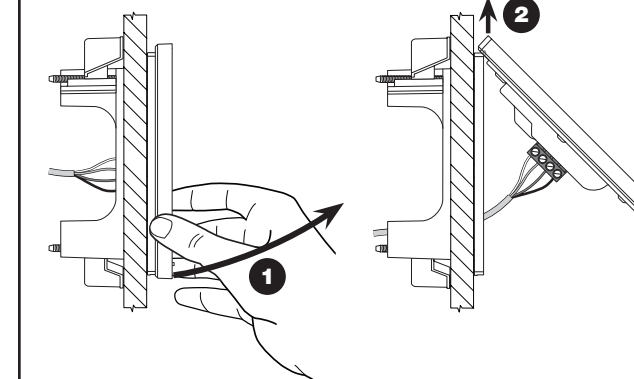
Step 1: Triple tap any button, below the screen, on the Dynamic Keypad. DO NOT release after third tap.

Step 2: Keep the button pressed on the third tap until all the buttons start to flash slowly (approximately 3 seconds).

Step 3: Immediately release the button and triple tap the button again. The buttons on the Dynamic Keypad will flash quickly.

The Dynamic Keypad has now been returned to Factory Settings.

Removing Dynamic Keypads



Warranty: For warranty information, please see the Warranty enclosed with the product, or visit www.lutron.com/resiinfo