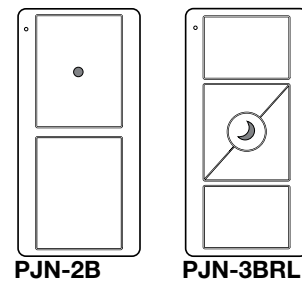


Pico® Wireless Control with Nightlight

English

3 V^{DC} 10 mA



Mounting accessories sold separately.

For a complete listing of Pico® wireless mounting accessories, please visit www.lutron.com/pico

Important Notes

Please Read Before Installing

1. This install guide provides simple setup instructions for Maestro Wireless® systems only. If you are using your Pico® wireless control with any other Lutron® system, please refer to the system setup guide. If you no longer have your system setup guide, please download the latest version by following the links at www.lutron.com/pico
2. The Pico® wireless control uses one (1) CR2032 battery. **DO NOT** use rechargeable batteries. Using improper batteries could damage the Pico® wireless control. **DO NOT** dispose of the battery in normal household waste. Please recycle it by taking it to a proper battery disposal facility, or contact your local waste disposal provider regarding local restrictions on the disposal or recycling of batteries.

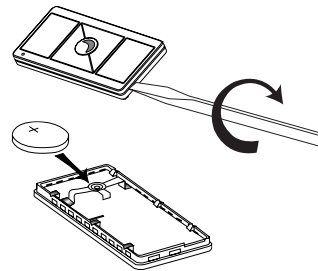


WARNING: Risk of fire, explosion and burns. May result in serious injury or death. DO NOT recharge, disassemble, crush, puncture, heat above 212 °F (100 °C) or incinerate the battery. The battery in this device contains Perchlorate Material - special handling may apply. For more information visit www.dtsc.ca.gov/hazardouswaste/perchlorate

3. The Pico® wireless control must be paired with dimmer(s)/switch(es) before it can communicate.
4. Up to 10 Pico® wireless controls can be configured to work together in a Maestro Wireless® system.
5. The range of the Pico® wireless control is 30 ft (9 m). Performance is highly dependent on a variety of complex factors such as:
 - Distance between system components
 - Geometry of the building structure
 - Construction of walls separating system components
 - Electrical equipment located near system components
6. **Clean Pico® wireless control with a soft damp cloth only. DO NOT** use any chemical cleaners.
7. **DO NOT** paint the Pico® wireless control.
8. **DO NOT** mount the Pico® wireless control to a metal surface.

Installing the Battery in a Pico® Wireless Control with Nightlight

1. Place a flathead screwdriver into the slot at the bottom of the Pico® wireless control. Twist to open. **DO NOT** press buttons without back enclosure on.
2. Slide a new battery underneath the contact strap, with the (-) terminal toward the front of the Pico® wireless control.
3. Replace the back enclosure.
4. If installing a new battery, proceed to **Set-up**. If replacing the battery, confirm proper installation by turning the receiving device on and off using the Pico® wireless control.



Set-Up (for Maestro Wireless® systems only)

To communicate with other systems or devices, including Radio RA® 2, QS sensor module (QSM), Quantum®, and HomeWorks® QS, refer to the system setup guides. See www.lutron.com/pico for more information.

Important: Set up a Pico® wireless control to a dimmer/switch before use.

1. Press and hold the dimmer/switch tap button (Figure 1) for approximately 6 seconds. Once the LED(s) start to blink slowly, release the tap button.
2. Press and hold the **OFF** button on the Pico® wireless control (Figure 2) for approximately 6 seconds.
3. Once the dimmer/switch pairs with the Pico® wireless control, the LED(s) on the dimmer/switch and the load will flash 3 times and it will exit Set-Up mode.
4. Repeat steps 1 to 3 to pair multiple Pico® wireless controls with a single dimmer/switch. Repeat steps 1 to 3 to pair a single Pico® wireless control with multiple dimmers/switches.
5. Pressing the **Preset** button (-3BRL model only) on a Pico® wireless control will cause all dimmers to go to the favorite light settings. Switches can be configured to turn **ON** or **OFF**. To save a favorite light setting, adjust all the dimmers/switches controlled by a Pico® wireless control to the desired light setting. Then press and hold the **Preset** button on the Pico® wireless control for 6 seconds until all LEDs on the dimmers/switches flash several times.

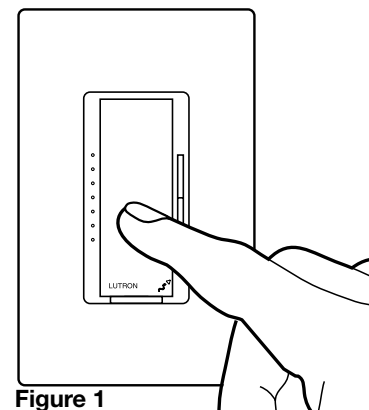


Figure 1

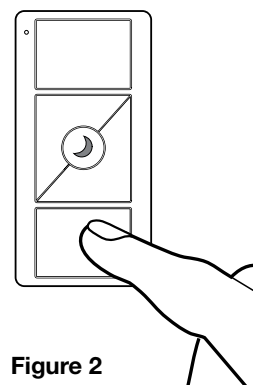
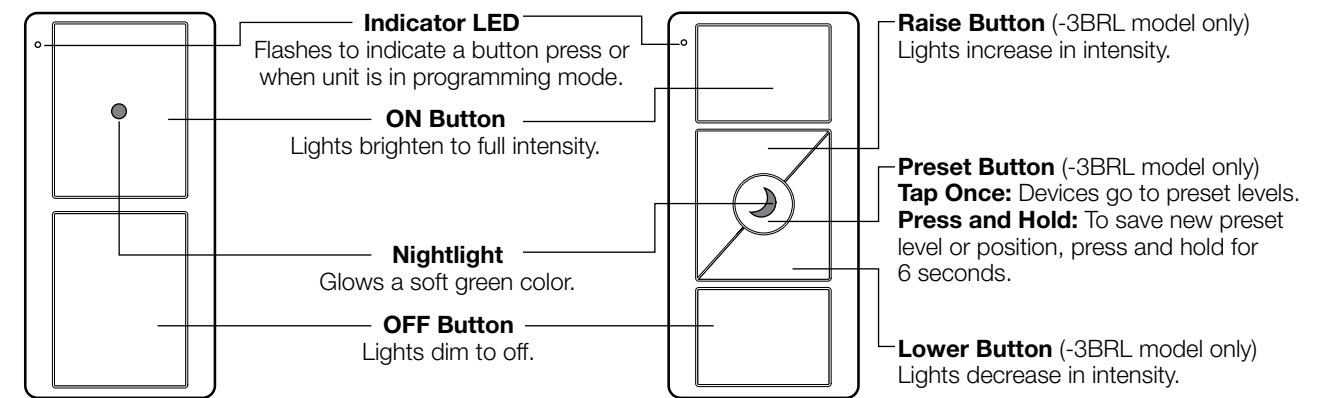


Figure 2

Operation



Wireless Control of Multiple Switches

If multiple wireless dimmers/switches are paired with the same Pico® wireless control, they will perform as follows:

- Pressing the **ON** button on the Pico® wireless control will cause all dimmers/switches to turn ON fully.
- Pressing the **OFF** button on the Pico® wireless control will cause all dimmers/switches to turn OFF completely.
- Pressing the **Raise** button (-3BRL model only) on a Pico® wireless control will cause all dimmers to turn **ON** and gradually increase in intensity.
- Pressing the **Lower** button (-3BRL model only) on a Pico® wireless control will cause all dimmers to gradually decrease in intensity. The dimmers will not turn off and will remain at low-end.
- Pressing the **Preset** button (-3BRL model only) on a Pico® wireless control will cause all dimmers to return to the favorite light settings. Switches can be configured to go to **ON** or **OFF**. (See Step 5 in **Set-Up**)

Un-pairing a Pico® Wireless Control

(for Maestro Wireless® systems only)

To un-pair a previously paired Pico® wireless control from your system, tap the **OFF** button (Figure 2) on the Pico® wireless control three times, on the third tap hold for 6 seconds and then tap three more times. This will remove all dimmers/switches it was previously paired with.

Troubleshooting

Symptoms	Possible Causes
Light does not respond to Pico® wireless control	<ul style="list-style-type: none"> • The dimmer/switch failed to pair with Pico® wireless control; see Set-Up. • The dimmer/switch has already received and responded to a command or is already at the light setting the Pico® wireless control is sending. • The Pico® wireless control is outside the 30 ft (9 m) operating range. • The battery in the Pico® wireless control is low. • The battery in the Pico® wireless control is installed incorrectly.
When in set-up mode the LEDs on the dimmer/switch flash when trying to setup with the Pico® wireless control or sensor.	<ul style="list-style-type: none"> • The maximum number of Pico® wireless controls or sensors have been paired with the dimmer/switch. More Pico® wireless controls or sensors can not be added. See Un-pairing a Pico® Wireless Control.
Nightlight LED on the Pico® wireless control is not illuminated	<ul style="list-style-type: none"> • The battery in the Pico® wireless control is installed incorrectly. • The battery in the Pico® wireless control is low and needs to be replaced.

Technical Assistance

www.lutron.com

World Headquarters

For questions concerning the installation or operation of this product, call the Lutron Technical Support Center. Please provide exact model number when calling.

TEL +1.610.282.3800

FAX +1.610.282.1243

Toll Free 1.888.LUTRON1

USA, Canada, Caribbean 1.800.523.9466

Mexico +1.888.235.2910

Central/South America +1.610.282.6701

European Headquarters United Kingdom

Lutron EA Ltd.

TEL: +44.(0)20.7702.0657

FAX: +44.(0)20.7480.6899

Technical Support:

+44.(0)20.7680.4481

Freephone: 0800.282.107

www.lutron.com/europe

Asian Headquarters Singapore

TEL +65.6220.4666

FAX +65.6220.4333

Asia Technical Hotlines

Northern China 10.800.712.1536

Southern China 10.800.120.1536

Hong Kong 800.901.849

India +91.11.4051.4300

Indonesia 001.803.011.3994

Japan +81.3.5575.8411

Macau 0800.401

Singapore 800.120.4491

Taiwan 00.801.137.737

Thailand 001.800.120.665853

Other countries +65.6220.4666

FCC/IC Information:

<http://www.lutron.com/en-US/Products/Documents/Components/PicoWirelessController/FCC.html>

