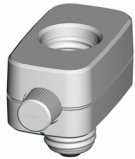


Installation Instructions

Please Read Before Installing

120 V~ 50/60 Hz



Lamp Socket Dimmer/Switch

Load Specifications

Control	Load Type	Min. Load	Max. Load
SZ-1SD	Incandescent	10 W	150 W
	Halogen	10 W	100 W
	Compact fluorescent	10 W	30 W

Important Notes

Install in accordance with all local and national electrical codes.

Environment: Ambient operating temperature: 32 to 104 °F (0 to 40 °C), 0 to 90% humidity, non-condensing. Indoor use only.

Cleaning: To clean, wipe with a clean damp cloth. **DO NOT** use any chemical cleaning solutions.

RF Device Placement: RF dimmers and switches must be located within 20 feet (6 m) of an RF signal repeater or a device configured as a repeater.

Stanza RF dimmers or switches cannot be controlled by the system until they are addressed and programmed. They will work as stand-alone controls only.

Range and performance of the *Stanza* system are dependent on a variety of factors, including:

- Distance between system components
- Geometry of the space
- Construction of walls separating system
- Electrical equipment located near the system components
- Position of the lamp socket dimmer/switch.

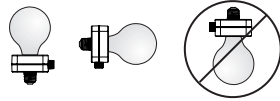
Lamp requirements: Do not use dimmer to control table lamps with touch control or with integral dimmers. Lamps without integral switches are recommended; lamps with integral switches must be set to full on, then the switch should be disabled or removed.



Caution! To avoid risk of electrical shock, do not attempt to open the lamp socket dimmer/switch. Unplug the table lamp before changing the light bulb.

Installation

The lamp socket dimmer/switch may be installed in any orientation between vertical and 90° from vertical. When installed in any orientation other than vertical, derating is required.

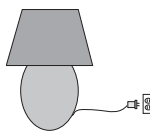


Derating Chart

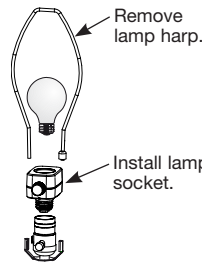
Orientation	Load Type	Rating
Vertical	Incandescent	150 W
	Halogen	100 W
10 to 90° from vertical	Incandescent	100 W
	Halogen	75 W

1. Find a suitable location for the lamp socket dimmer/switch. The dimmer/switch must be within 20 feet (6 m) of a device configured as a repeater. If there is a switch on the lamp, make sure it is in the full on position, and remove or disable it if possible.

2. Unplug the lamp cord from the wall receptacle.

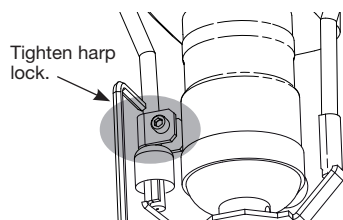


3. Remove the lamp harp.

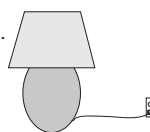


4. Remove the lamp bulb, and screw the lamp socket dimmer/switch into the lamp socket. Replace the bulb into the lamp socket dimmer/switch.

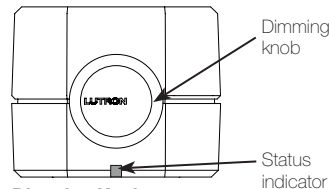
5. Reinstall the lamp harp (rotate it to clear the lamp socket dimmer/switch if necessary). If desired, install the optional harp lock using the provided hex wrench.



6. Plug the lamp cord into the wall socket.



Operation



Dimming Knob

- Turn clockwise to turn on and brighten
- Turn counter-clockwise to dim and turn off
- Push in to toggle on and off
- Push in and hold to enter programming mode
- Audible sound indicates when high and low levels are reached

Status Indicator

- Indicates current load status
- Green = load is switched on
- Off = load is switched off
- Amber = device is in programming mode
- Red = device is experiencing an over-temperature condition

Operation Notes

- The lamp socket dimmer/switch should immediately control the bulb once power is applied.
- When initially installed, the lamp socket dimmer/switch functions only as a switch, which allows it to control non-dimmable compact fluorescent bulbs. To also dim incandescent loads, it must first be addressed as part of a *Stanza* system.
- The lamp socket dimmer/switch cannot be controlled over radio frequency (RF) from a keypad or contact closure input until it has been addressed as part of a *Stanza* system.

Returning the Dimmer/Switch to Factory Settings

1. Triple-tap the dimming knob quickly (within 1 second).
2. Press and hold the dimming knob for 5 seconds (until the load flashes).
3. Triple-tap the dimming knob quickly again.

Notes

- Returning to factory settings will clear all programming from the lamp socket dimmer/switch device, and will prevent it from being controlled over RF from a keypad or control interface.
- After being returned to factory defaults, the device will need to be re-addressed as part of a system.
- The device will revert to switching operation, so non-dimmed compact fluorescent loads can be controlled. Incandescent loads then cannot be controlled until the device has been re-addressed as part of a system. Otherwise, damage to the device or bulb may occur.

Troubleshooting Guide

Symptom	Cause and Action
Light does not turn on, but the status indicator is on.	<p>Light bulb/lamp is burned out or not installed.</p> <ul style="list-style-type: none"> • Replace or install lamps.
Light does not turn on, and the status indicator is off.	<p>Power is off</p> <ul style="list-style-type: none"> • Check the circuit breaker and make sure it is on. <p>Lamp is unplugged</p> <ul style="list-style-type: none"> • Check that the lamp cord is plugged into the wall socket. <p>Lamp has an integral switch</p> <ul style="list-style-type: none"> • Make sure the lamp's integral switch is set to full on.
Dimmer does not dim properly and/or flickers.	<p>Lamp has an integral dimmer</p> <ul style="list-style-type: none"> • Use a lamp without a dimmer. <p>Bulb is not dimmable</p> <ul style="list-style-type: none"> • Replace bulb with incandescent bulb.

FCC Information

Note: This equipment has been tested and found to comply with the limits for a Class B digital device pursuant to Part 15 of the FCC rules. Operation is subject to the following: (1) This device may not cause harmful interference, and (2) this device must accept any interference received, including interference that may cause undesired operation.

Technical support: USA, Canada, Caribbean: 1.800.523.9466
Mexico: +1.888.235.2910
Central/South America: +1.610.282.6701

Warranty: 1-year limited warranty standard. 2-year parts and labor warranty, with 8-year pro-rated parts replacement on commissioned systems.

These products may be covered under one or more of the following U.S. patents: 5,248,919; 5,838,226; 5,848,054; 5,905,442; 6,687,487; 6,803,728; and corresponding foreign patents. U.S. and foreign patents pending. Lutron and the sunburst logo are registered trademarks and Stanza is a trademark of Lutron Electronics Co., Inc.

© 2008 Lutron Electronics Co., Inc.



Lutron Electronics Co., Inc.
Made and printed in the U.S.A.
P/N 030-996 Rev. A 6/08