

### Single-Pole Installation

**Incandescent/Halogen Dimmer with RF Receiver**  
MRF-600 120 V~ 60 Hz 600 W

**Radio Frequency Wireless Transmitter with One-Touch Favorite Button**  
MRF-VCTX 6 V== 1.5 mW

### Important Notes

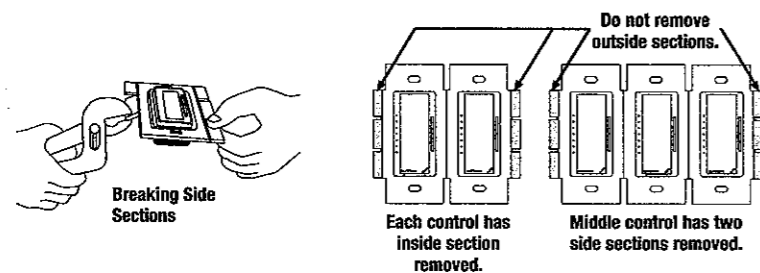
Please read before installing.

- Caution:** To avoid overheating and possible damage to other equipment, do not use to control receptacles, fluorescent lighting fixtures, motor-operated or transformer-supplied appliances.
- Install in accordance with all national and local electrical codes.
- When no "grounding means" exist within the wallbox then the NEC, 2005, Article 404-9 allows a dimmer without a grounding connection to be installed as a replacement, as long as a plastic, noncombustible wallplate is used. For this type of installation, cap or remove the green ground wire on the dimmer and use an appropriate wallplate such as Lutron's *Claro* series wallplates.
- Do not paint Dimmers.
- Do not use where total lamp wattage is less than 60 W or greater than 600 W (see Dimmer Capacity Chart for details).
- Operate between 0 °C (32 °F) and 40 °C (104 °F).
- Dimmer may feel warm to the touch during normal operation.
- Recommended wallbox depth is 2 1/2" (64 mm) minimum.
- Clean dimmer with a soft damp cloth only.** Do not use any chemical cleaners.

This device complies with part 15 of the FCC Rules. Operation is subject to the following two conditions: (1) This device may not cause harmful interference and (2) This device must accept any interference received, including interference that may cause undesired operation.

### Multigang Installations

When installing more than one control in the same wallbox, it may be necessary to remove all inner side sections prior to wiring (see below). Using pliers, bend side section up and down until it breaks off. Repeat for each side section to be removed. Removal of Dimmer side sections reduces maximum load capacity. Refer to the Dimmer Capacity Chart below.



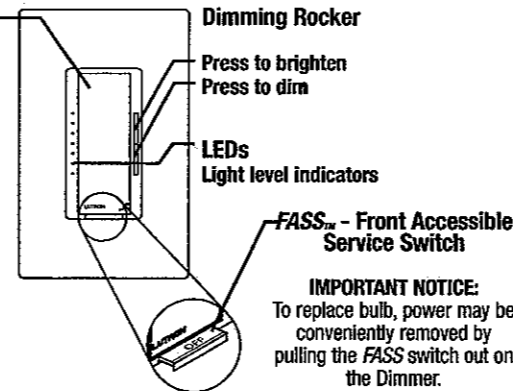
### Dimmer Capacity Chart

Model	Load		
	No Sides Removed	1 Side Removed	2 Sides Removed
MRF-600	600 W	500 W	400 W

## Dimmer Operation

### Tap Button Options

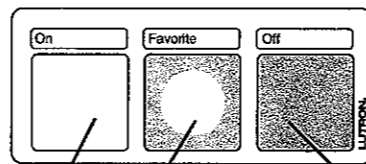
- Tap once when unit is off - Lights brighten smoothly to preset intensity.
- Tap once when unit is on - Lights dim smoothly to off.
- Tap twice quickly - Lights brighten rapidly to full intensity.
- Press and hold when unit is on - Each time dimmer is turned off delayed fade to OFF can be activated. As the tap button is held, the LEDs will begin to flash. The first flashing LED represents a 10 second fade to OFF. Each additional flashing LED represents an additional 10 seconds of delay before lights fade to OFF (up to 60 seconds of delay).



## Radio Frequency Wireless Transmitter Operation

### Important Notes

- A Dimmer can learn up to 4 Visor Control Transmitters.
- Clean Control with a soft damp cloth only.** Do not use a chemical cleaner.
- Meets the Society of Automotive Engineers (SAE) temperature standards: -40°C (-40°F) to 113°C (235°F).
- Do not paint the Visor Control.
- The range and performance of the Maestro Wireless system is highly dependent on a variety of complex factors such as:
  - Distance between system components
  - Geometry of the home
  - Construction of walls separating system components
  - Electrical equipment located near system components



**ON FULL:**  
Tap once - lights brighten rapidly to full intensity.

**OFF:**  
Tap once: Lights dim smoothly to off.

### FAVORITE BUTTON:

Tap once to recall your favorite light level. To store your favorite level, adjust rocker on dimmer, press and hold favorite button for about 8 seconds until the dimmer LED begins to cycle quickly. ("Off" is a valid preset level.)

This transmitter is compatible with most HomeLink equipped Vehicles. Please see the manufacturer's instructions for programming information.

### NOTES:

- The Dimmer(s) must learn the Visor Control Transmitter in order for the Transmitter to operate the Dimmer(s).
- Batteries are included and are pre-installed. Battery lifetime is approximately 5 years.

### Multiple Dimmer Applications

If multiple *Maestro Wireless* Dimmers are programmed to the same transmitter they will perform as follows:

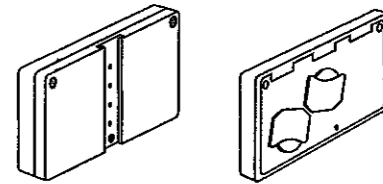
- Pressing the ON FULL button will cause each dimmer to brighten to full intensity, regardless of whether some are on and some are off.
- Pressing the OFF button will cause all dimmers to fade off.
- To save your favorite light level, adjust all the dimmers programmed to a transmitter to the desired level, then press and hold the Favorite button for about 8 seconds until the dimmer LEDs begin to cycle quickly. Once your favorite light level is set, pressing the Favorite button will cause each dimmer to return to your favorite light level.
- System Expansion: Each transmitter can control up to 4 dimmers. Each dimmer can learn up to 4 transmitters.

### Battery Replacement

The RadioFrequency Wireless Transmitter uses (2) CR2032 Lithium Coin Cell 3.0 V each batteries that are pre-installed.

### To replace batteries:

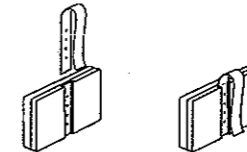
- Remove 3 screws on back.
- Remove back cover.
- Slide out both coin cell batteries.
- Replace with CR2032 Lithium Coin Cell 3.0 V each.
- Replace back cover.
- Replace 3 screws on back.



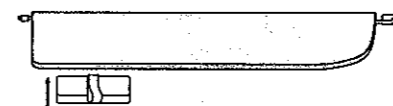
## Visor Control Mounting

The Visor Control Transmitter can be mounted to a vehicle's visor using the supplied visor clip.

### 1 Attach visor clip to Visor Control



### 2 Mount Visor Control onto vehicle's visor.



Visor clip may need to be manually opened depending on visor thickness.

### FCC Information

**NOTE:** This equipment has been tested and found to comply with the limits for a Class B digital device, pursuant to part 15 of the FCC rules. These limits are designed to provide reasonable protection against harmful interference in a residential installation. This equipment generates, uses and can radiate radio frequency energy and, if not installed and used in accordance with the instructions, may cause harmful interference to radio and television reception, which can be determined by turning the equipment off and on. The user is encouraged to try to correct the interference by one or more of the following measures:

- Reorient or relocate the receiving antenna.
- Increase the separation between the equipment and receiver.
- Connect the equipment into an outlet on a circuit different from that to which the receiver is connected.
- Consult the dealer or an experienced radio/TV technician for help

**Caution:** Changes or modifications not expressly approved by Lutron Electronics Co. could void the user's authority to operate this equipment.

### Technical Assistance

If you have questions concerning the installation or operation of this product, call the **Lutron Technical Support Center**. Please provide exact model number when calling.

**U.S.A. and Canada (24 hrs/7days)**  
1-800-523-9466  
**Other countries 8am - 8pm ET**  
+1-610-282-3800

**Fax +1-610-282-3090**

**http://www.lutron.com**

### Limited Warranty

(Valid only in U.S.A., Canada, Puerto Rico, and the Caribbean.)

Lutron will, at its option, repair or replace any unit that is defective in materials or manufacture within one year after purchase. For warranty service, return unit to place of purchase or mail to Lutron at 7200 Suter Rd., Coopersburg, PA 18036-1299, postage pre-paid.

**THIS WARRANTY IS IN LIEU OF ALL OTHER EXPRESS WARRANTIES, AND THE IMPLIED WARRANTY OF MERCHANTABILITY IS LIMITED TO ONE YEAR FROM PURCHASE. THIS WARRANTY DOES NOT COVER THE COST OF INSTALLATION, REMOVAL OR REINSTALLATION, OR DAMAGE RESULTING FROM MISUSE, ABUSE, OR DAMAGE FROM IMPROPER WIRING OR INSTALLATION. THIS WARRANTY DOES NOT COVER INCIDENTAL OR CONSEQUENTIAL DAMAGES. LUTRON'S LIABILITY ON ANY CLAIM FOR DAMAGES ARISING OUT OF OR IN CONNECTION WITH THE MANUFACTURE, SALE, INSTALLATION, DELIVERY, OR USE OF THE UNIT SHALL NEVER EXCEED THE PURCHASE PRICE OF THE UNIT.**

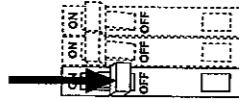
This warranty gives you specific legal rights, and you may have other rights which vary from state to state. Some states do not allow the exclusion or limitation of incidental or consequential damages, or limitation on how long an implied warranty may last, so the above limitations may not apply to you.

This product is covered under one or more of the following U.S. patents: 4,835,343; 5,248,919; 5,399,940; 5,637,930; 5,909,087; 6,169,377; 6,300,727; 6,380,696; D363,798; and corresponding foreign patents. U.S. and foreign patents pending. Lutron, Claro, Maestro, and Maestro Wireless are registered trademarks and FASS is a trademark of Lutron Electronics Co., Inc. NEC is a registered trademark of the National Fire Protection Association, Quincy, Massachusetts.

## Installation

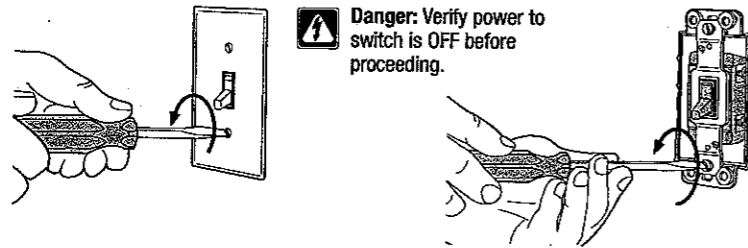
### 1 Turning Off Power.

- Turn power OFF at circuit breaker (or remove fuse).



### 2 Removing Wallplate and Switch.

- Remove the wallplate and switch mounting screws.
- Carefully remove switch from wall (do not remove wires).

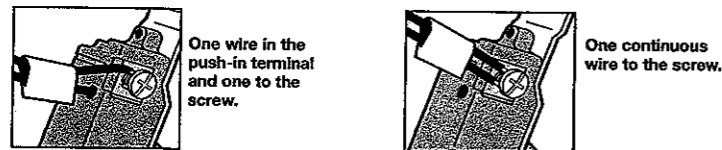


**Danger:** Verify power to switch is OFF before proceeding.

### 3 Disconnecting Switch Wires.

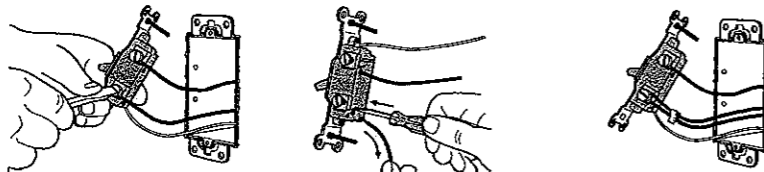
#### Important Note:

Your wall switch may have two wires attached to the same screw (see illustrations below for examples). Tape these two wires together before disconnecting. When wiring, connect wires to the Dimmer the same way they were connected to the switch.



One wire in the push-in terminal and one to the screw.

One continuous wire to the screw.



**Screw Terminals:** Turn screws to loosen.

**Push-in Terminals:** Insert screwdriver. Pull wire out.

**Looped Wire:** Turn screw to loosen.

### 4 Removing Wallplate.

- Dimmer has a pre-installed Lutron *Claro* wallplate. Remove the wallplate before proceeding with installation. This will expose mounting holes in adapter, and prevent wallplate damage while installing.



Grasp *Claro* wallplate at top and pull forward to remove.

## Important Wiring Information

When making wire connections, follow the recommended strip lengths and combinations for the supplied wire connector. **Note:** All wire connectors provided are suitable for *copper wire only*. For aluminum wire, consult an electrician. Trim or strip wallbox wires to the length indicated by the strip gauge on the back of the dimmer.

**Wire Connector:** Use to join 14 AWG or 12 AWG ground wire to 18 AWG dimmer ground wire.



Twist wire connector tight.

**Push-In Terminals:** Insert wires fully. **NOTE:** Push-in terminals are for use with 14 AWG *solid copper wire only*. DO NOT use stranded or twisted wire.

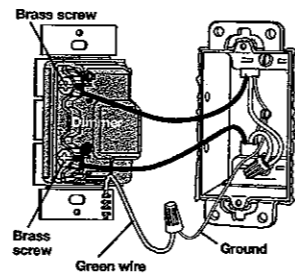


**OR**  
**Screw Terminals:** Tighten securely. Screw terminals are for use with 12 or 14 AWG *solid copper wire only*. DO NOT use stranded or twisted wire.

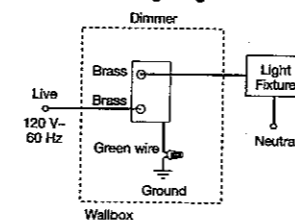


### 5 Wiring.

- For installations involving more than one control in a wallbox, refer to Multigang Installations before beginning.



#### Reference Wiring Diagram



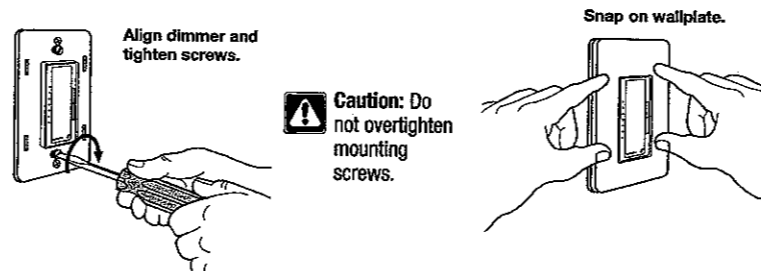
#### Wiring the Dimmer:

- Using the wire connector provided, connect the **green** ground wire on the Dimmer to the **bare copper or green** ground wire in the wallbox. Do not connect it to any other wire. (See Important Note 3.)
- Connect either of the wires removed from the switch to one of the **brass** screw terminals on the Dimmer, or insert fully into the push-in terminal.
- Connect the remaining wire removed from the switch to the other **brass** screw terminal on the Dimmer, or insert fully into the push-in terminal.

**NOTE:** This is a single pole control. For 3-way application (2 switch control for one light), special order MRF-603.

### 6 Mounting Dimmer to Wallbox.

- Form wires carefully into the wallbox, mount and align Dimmer.
- Replace *Claro* wallplate.



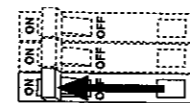
Align dimmer and tighten screws.

**Caution:** Do not overtighten mounting screws.

Snap on wallplate.

### 7 Turning On Power.

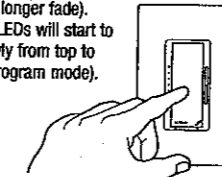
- Turn power ON at circuit breaker (or replace fuse).



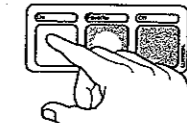
## Programming

### Adding Transmitter to Dimmer

**1a** Press and hold the dimmer's toggle button. LEDs will blink individually from the bottom up to the top (longer to longer fade). Then the LEDs will start to cycle slowly from top to bottom (program mode).



**1b** Continue to press and hold the toggle button while pressing and holding the ON button on transmitter.



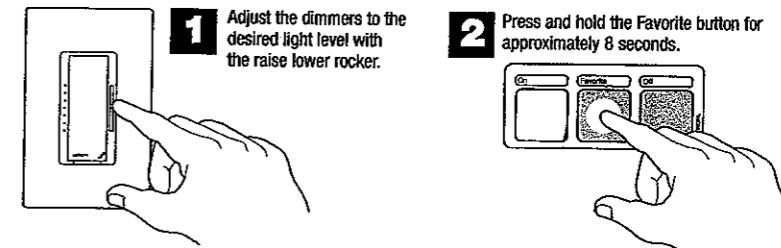
**1c** Once the dimmer learns the transmitters address, the LEDs on the dimmer will cycle quickly from top to bottom. Release the toggle button to exit program mode.

**2** Repeat steps 1a and 1b for each additional dimmer you wish to program the Transmitter to.

### Setting the Favorite button on the Transmitter

**NOTE:** Transmitter must be added to dimmer before you can set the Favorite.

**NOTE:** If Transmitter is added to multiple dimmers, you must adjust each dimmer first before you set the Favorite button (essentially creating a scene).



**1** Adjust the dimmers to the desired light level with the raise lower rocker.

**2** Press and hold the Favorite button for approximately 8 seconds.

**NOTE:** Off is a valid "Favorite" light level if you are using your "Favorite" button as a scene with multiple dimmers.

**NOTE:** When the favorite button is first pressed the lights will go to the previous favorite light level.

**3** After approximately 8 seconds the LEDs will cycle down and the lights will go to the new Favorite light level.

**4** Release the Favorite button.

## Troubleshooting

Lutron Technical Support Center at 1-800-523-9466.

Symptom	Possible Cause
Light does not turn ON or no LEDs turn ON.	<ul style="list-style-type: none"> <li>• Front Accessible Service Switch (FASS) on Dimmer is pulled out to the OFF position.</li> <li>• Light bulb(s) burned out.</li> <li>• Breaker is OFF or tripped.</li> <li>• Wiring error. Call <b>Lutron Technical Support Center</b> at +1-800-523-9466.</li> </ul>
Light does not respond to Radio Frequency Wireless Transmitter.	<ul style="list-style-type: none"> <li>• Dimmer failed to learn Transmitter address, see programming.</li> <li>• Transmitter batteries installed incorrectly.</li> <li>• Transmitter batteries are dead.</li> <li>• Transmitter outside operating range.</li> <li>• Dimmer has already received and responded to command.</li> </ul>
Dimmer keeps turning ON and OFF.	<ul style="list-style-type: none"> <li>• Load is less than 60 W.</li> </ul>
LEDs 1 and 7 blink alternately.	<ul style="list-style-type: none"> <li>• Maximum number of Transmitter addresses have been programmed to Dimmer.</li> <li>• Remove another Transmitter address.</li> <li>• Reset factory default (removes all Transmitter addresses in dimmer).</li> </ul>