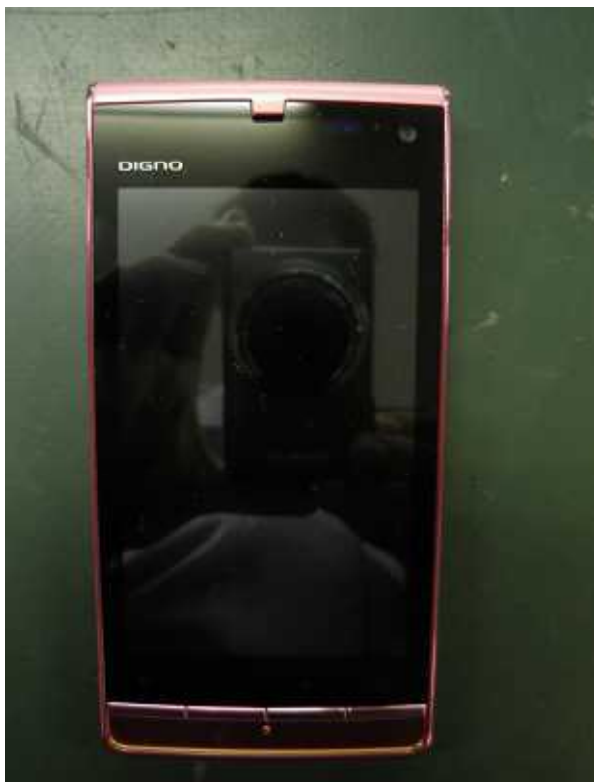


Internal Photos

FRONT



REAR



REAR 2



REAR OPEN



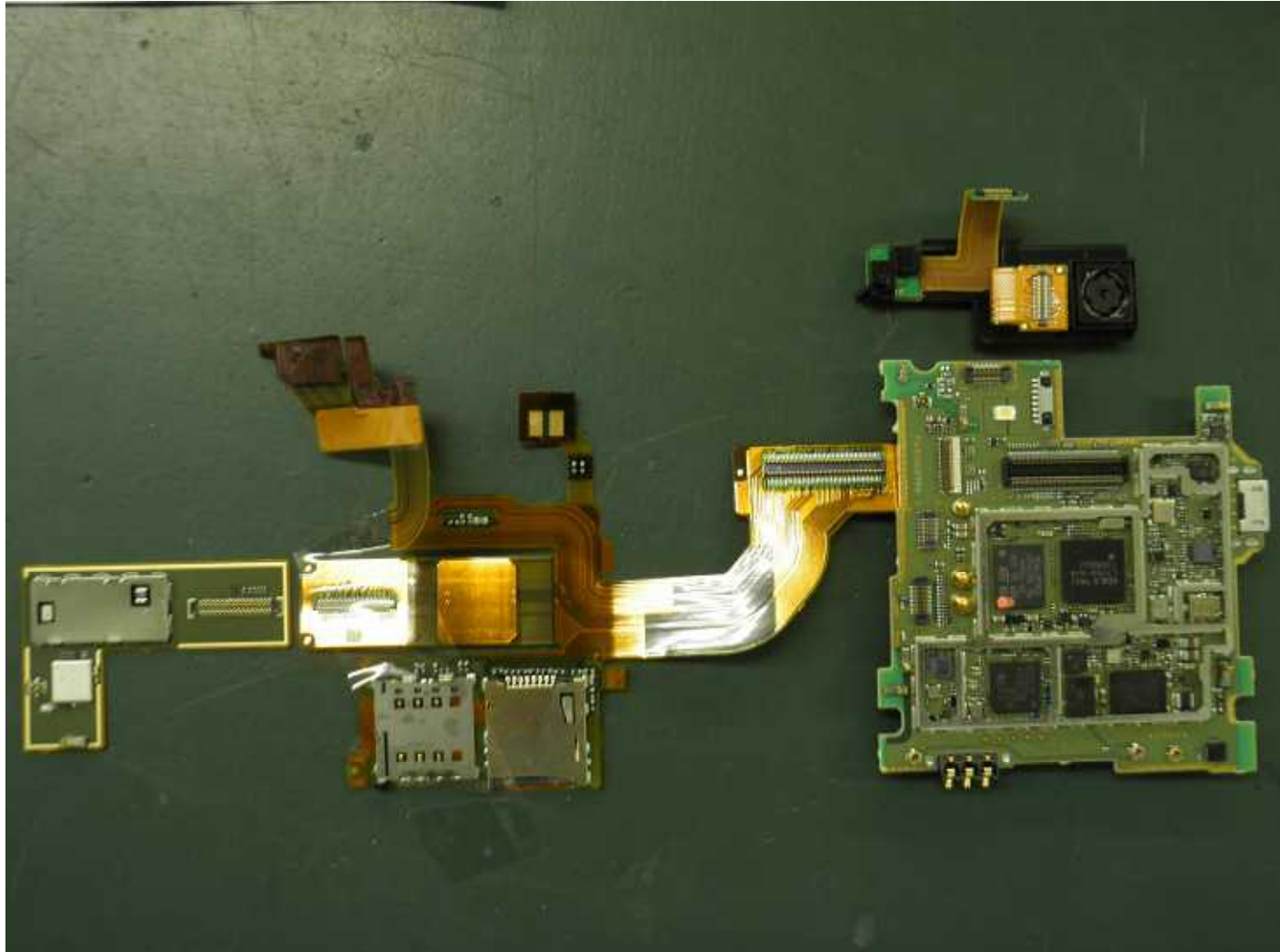
FRONT With SUB PCB/SUB FPC & MAIN PCB



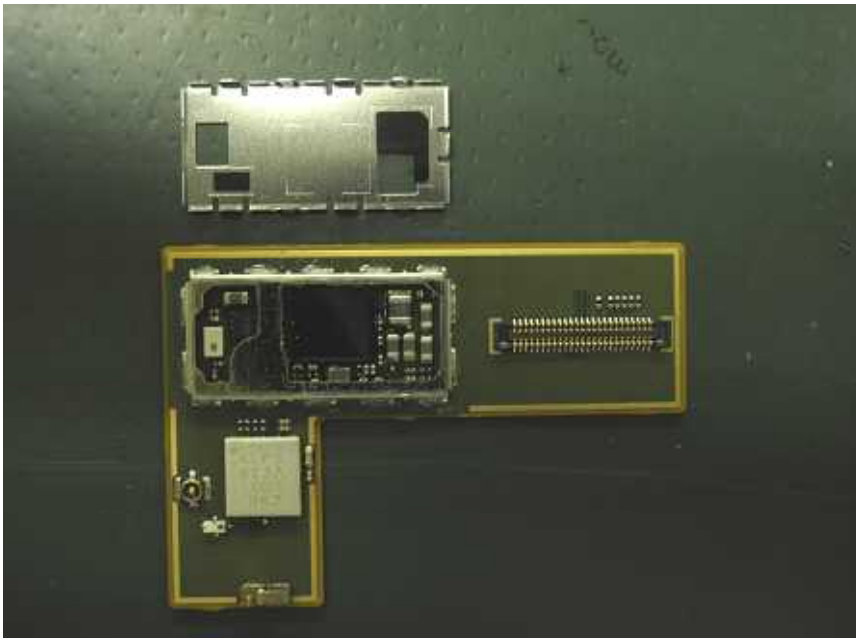
FRONT & REAR



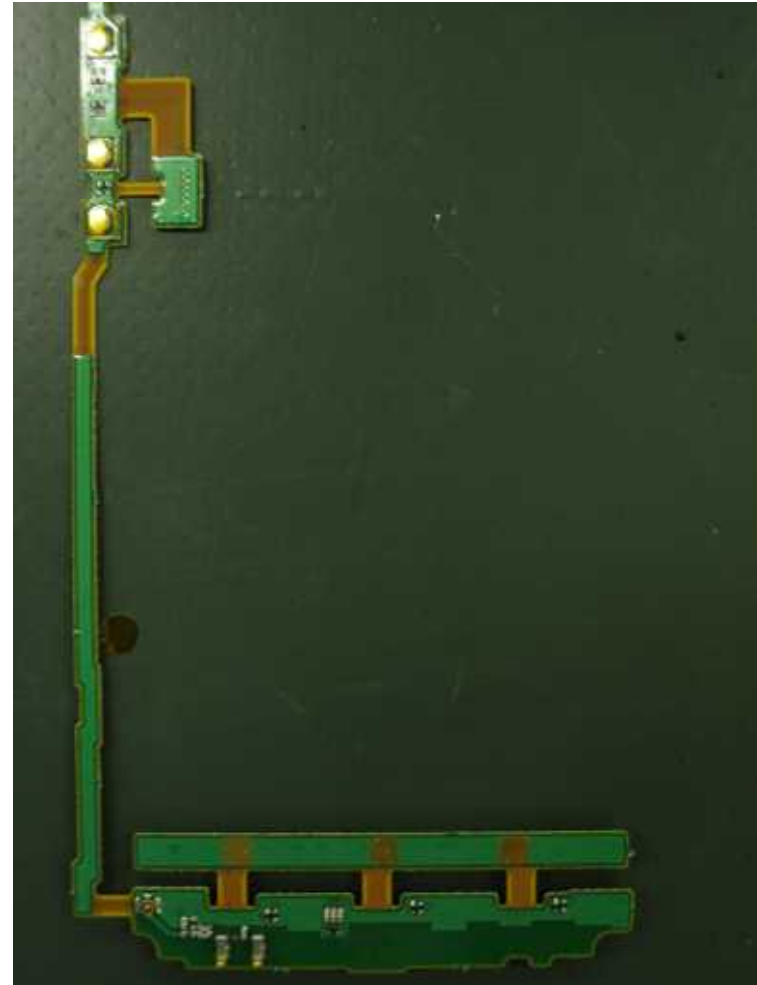
SUB PCB / SUB FPC / CAMERA FPC /MAIN PCB



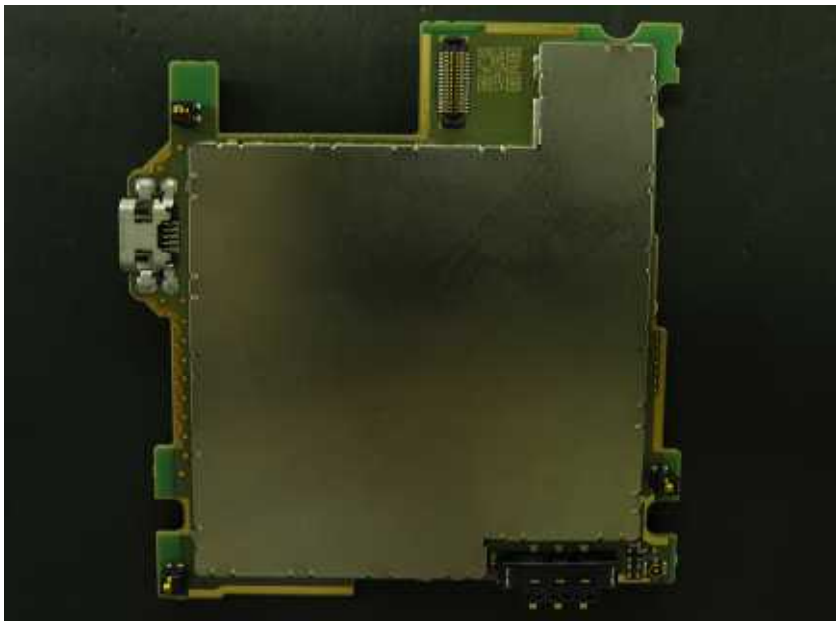
SUB PCB without Shield



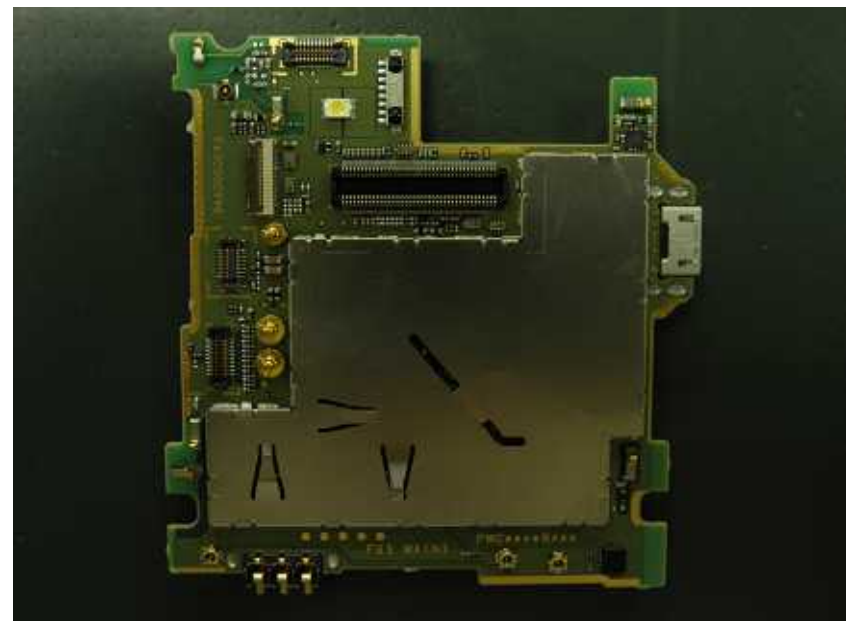
KEY FPC



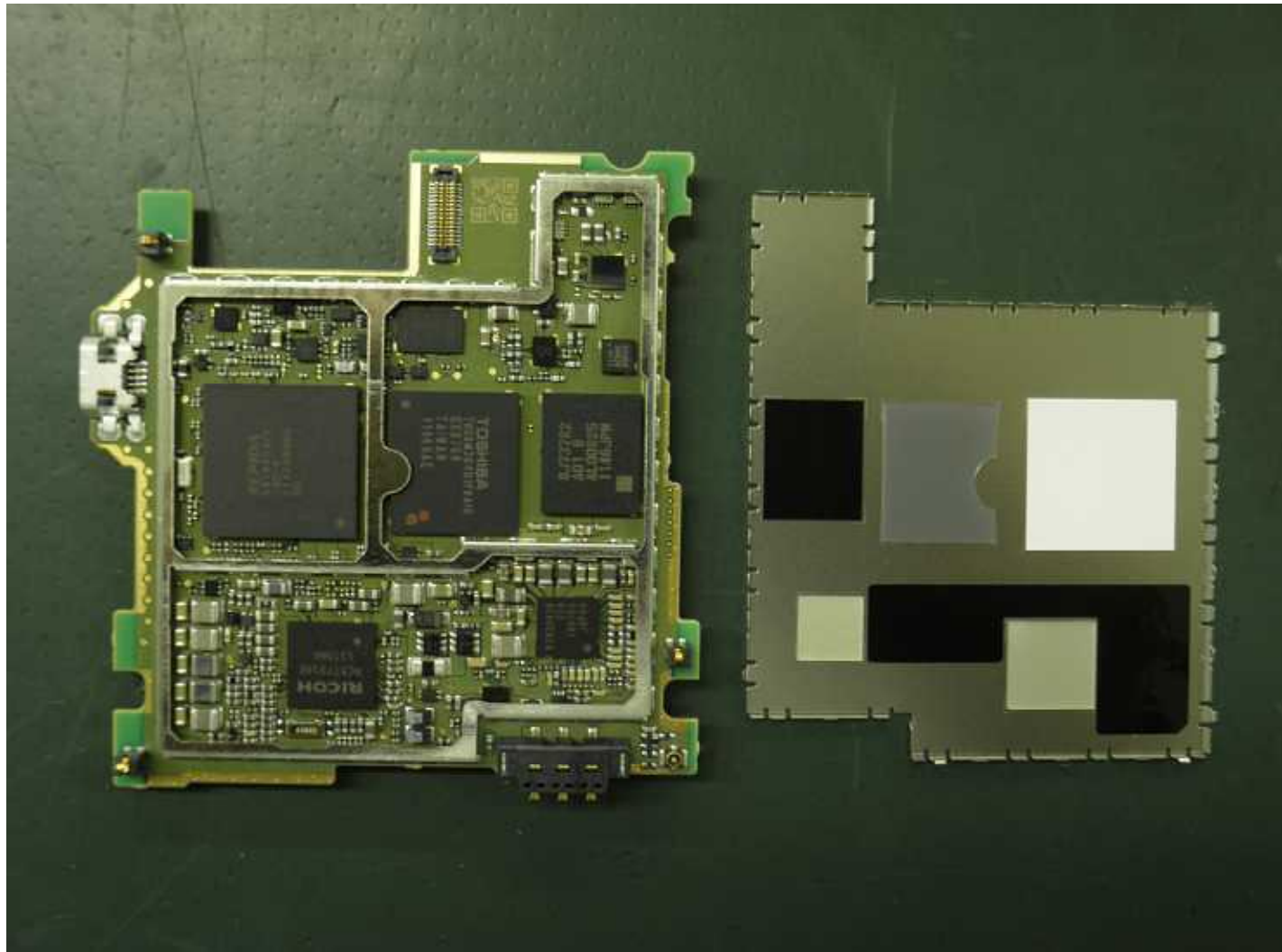
MAIN PCB L1 with shield



MAIN PCB L12 with shield



MAIN PCB L1 without Shield



MAIN PCB L12 without Shield

