

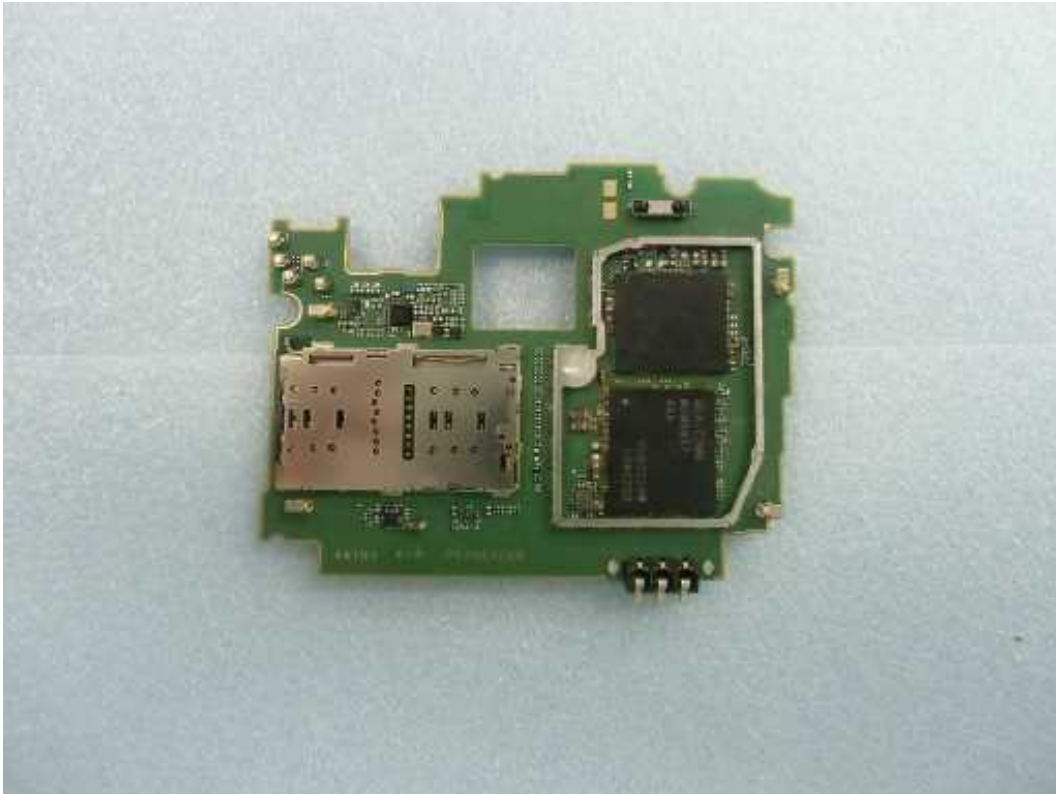
Rear cover open



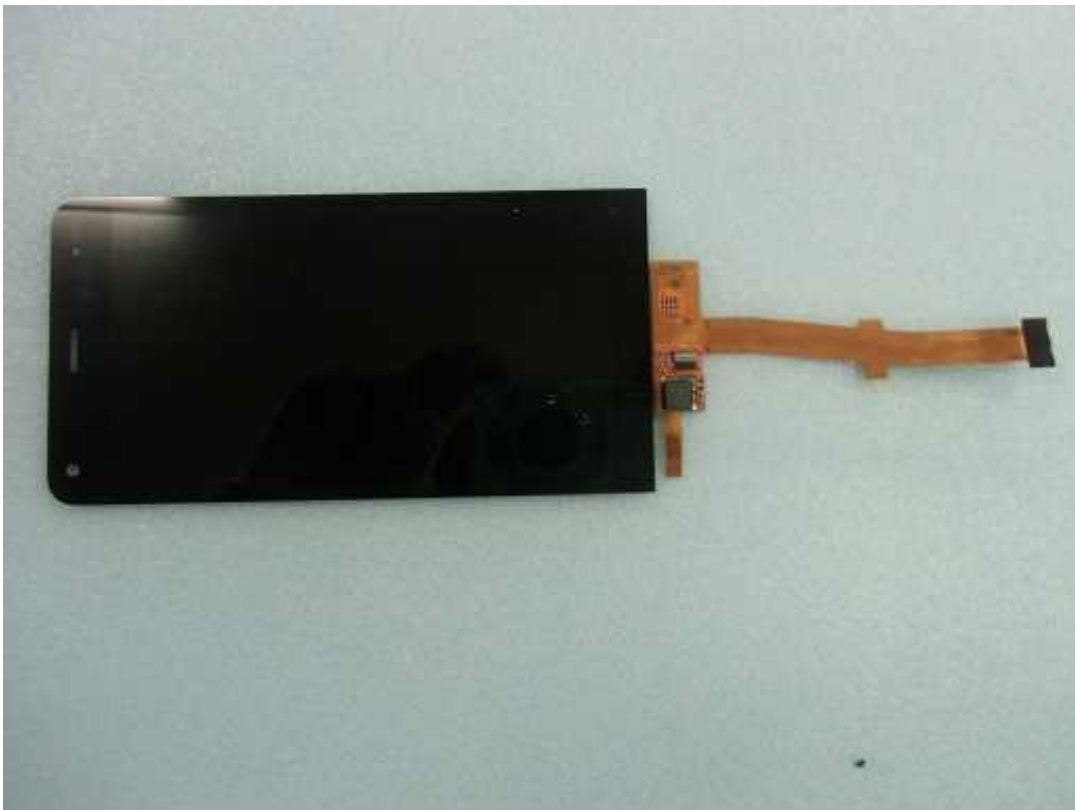
Main PCB front



**Main PCB rear**



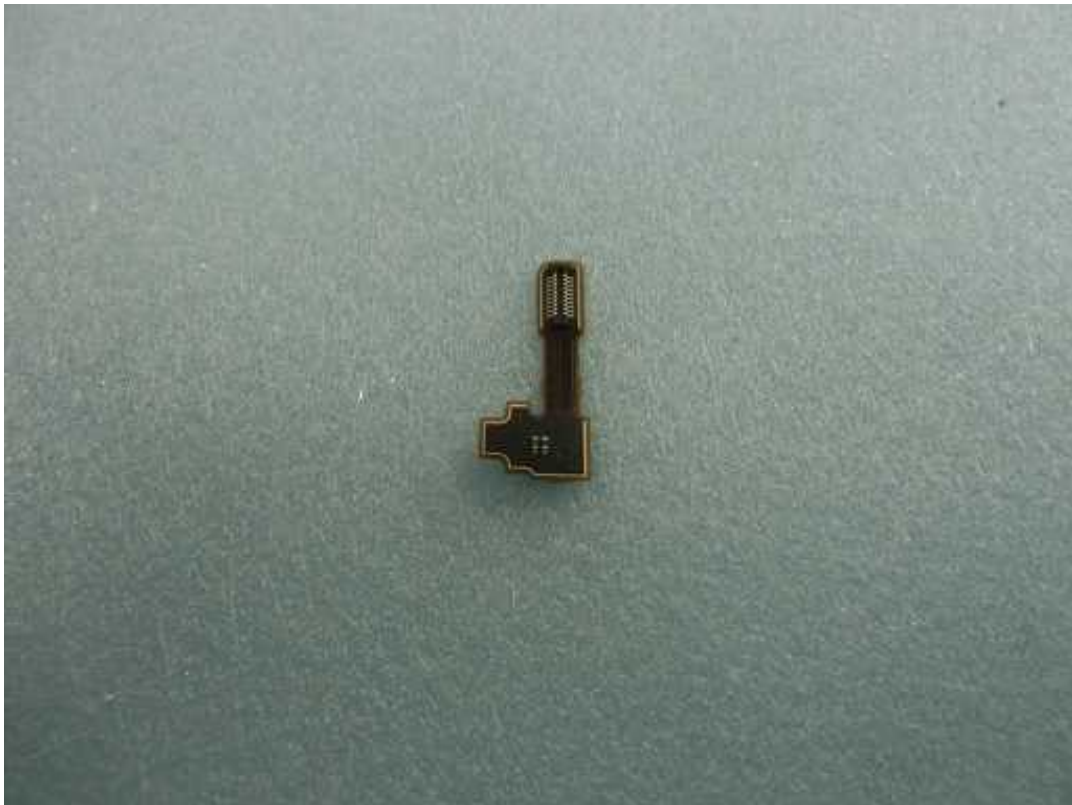
**LCD front**



**LCD rear**



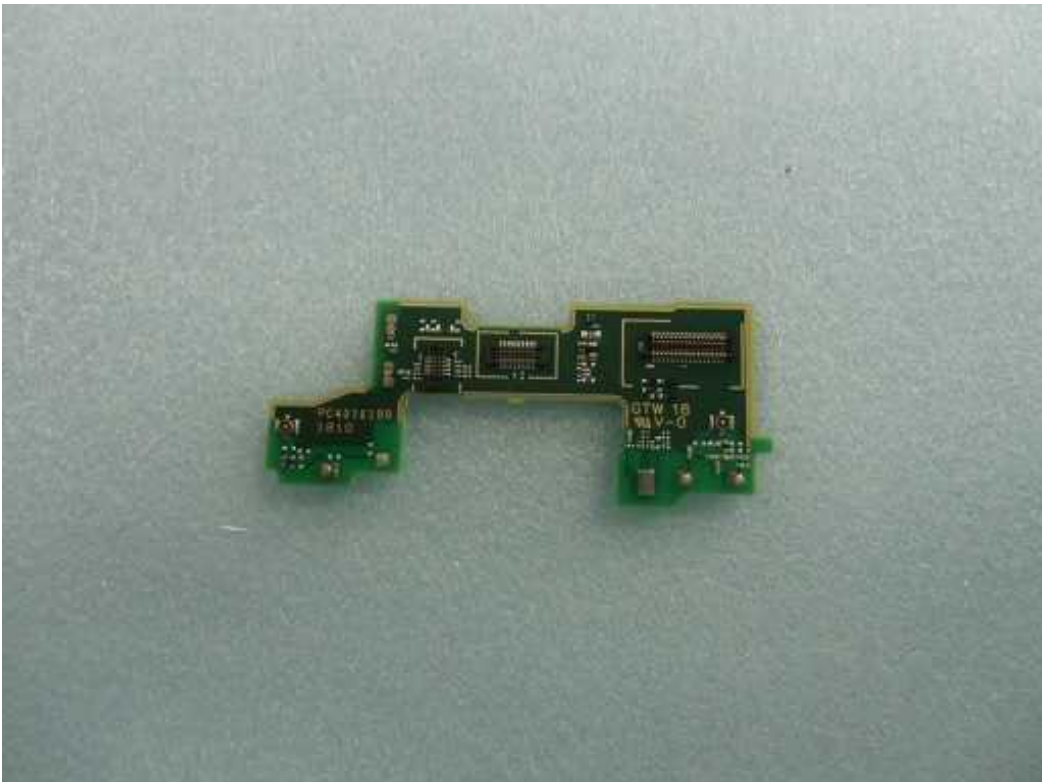
**Sub-1 FPC front**



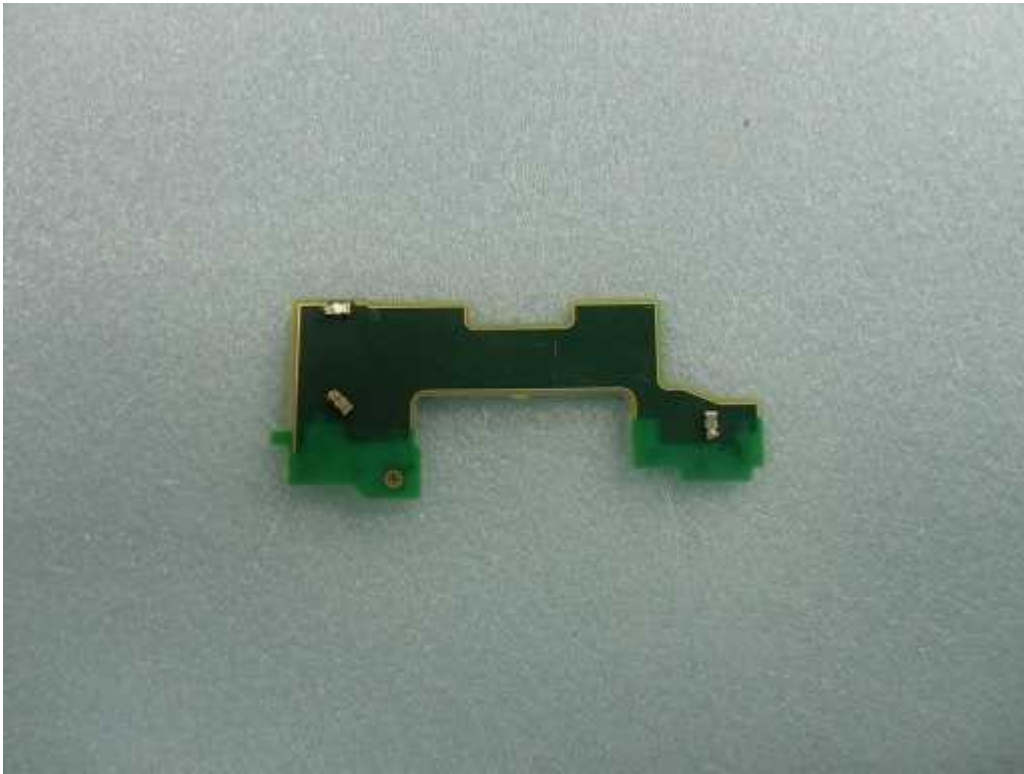
**Sub-1 FPC rear**



**Sub-2 FPC front**



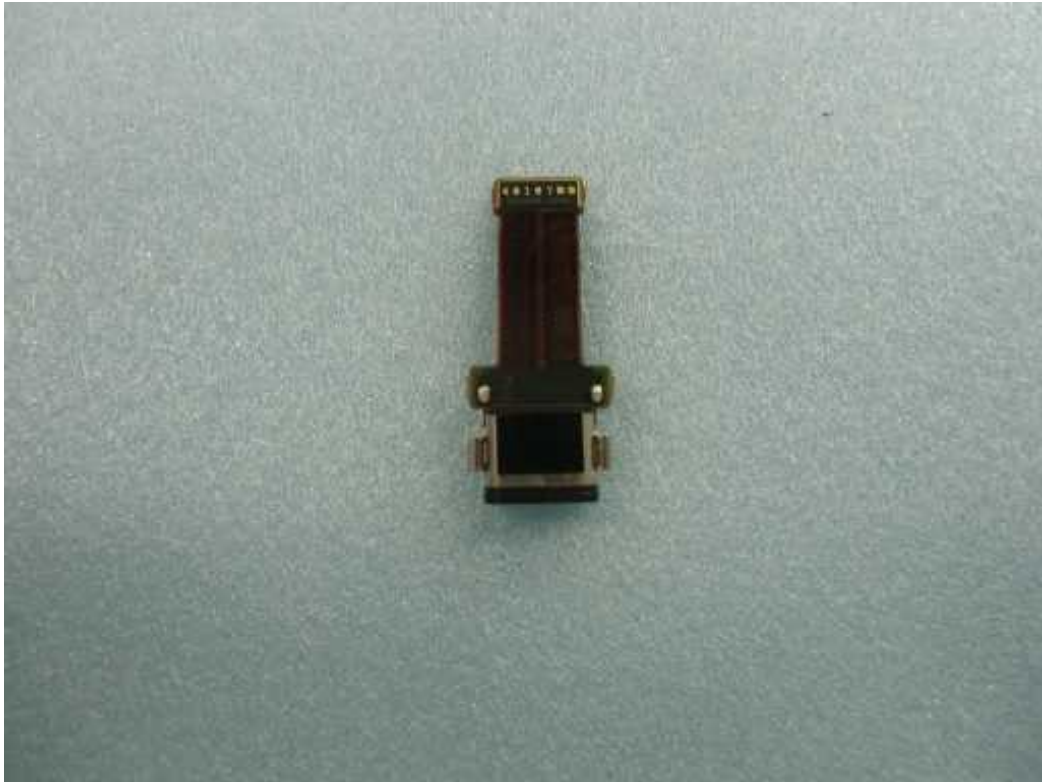
**Sub-2 FPC rear**



**USB FPC front**



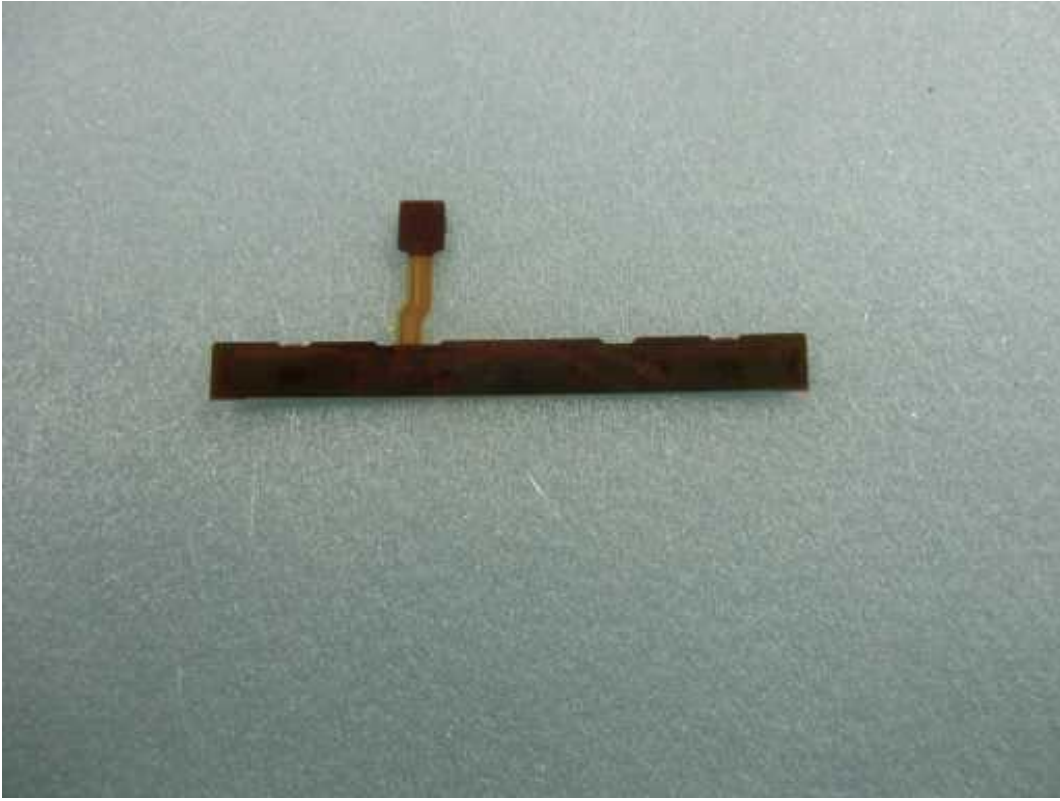
**USB FPC rear**



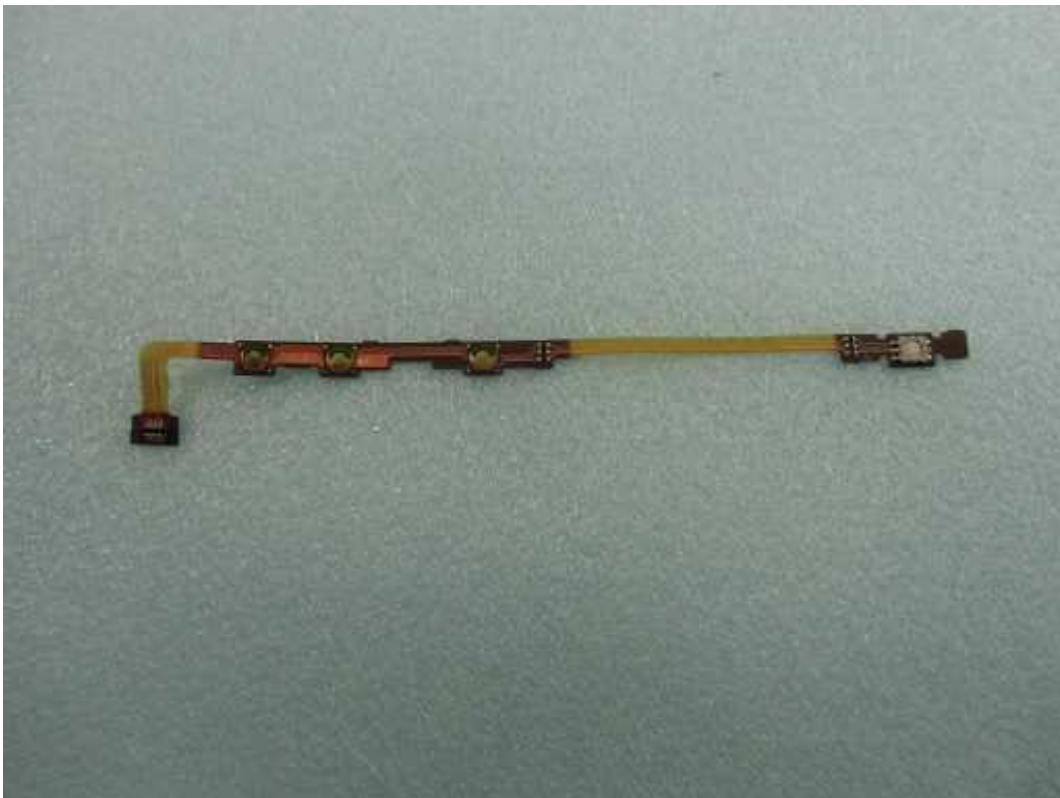
**Android key front**



**Android key rear**



**Side key front**



**Side key rear**

