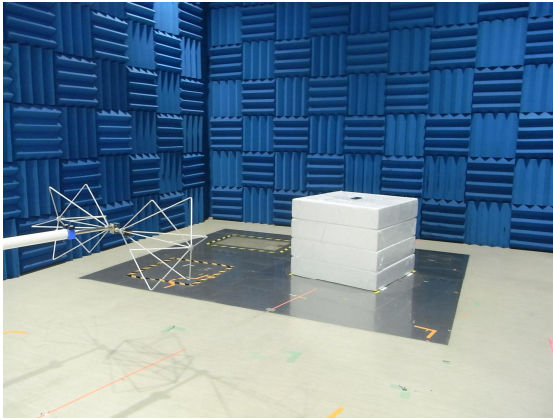
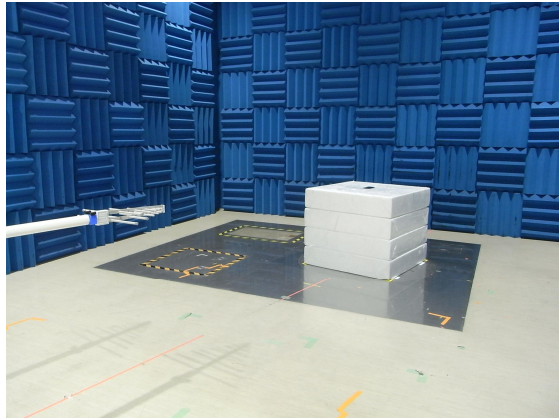


Radiated Emission

30MHz to 300MHz

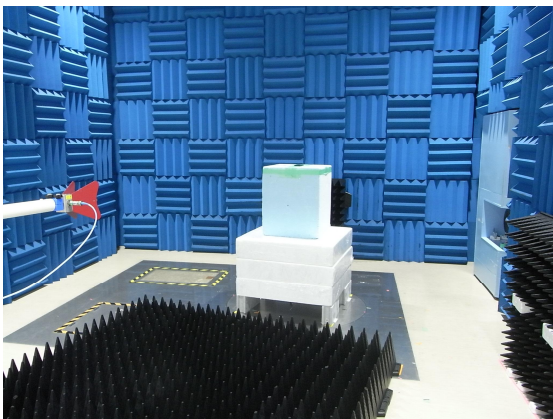


300MHz to 1GHz



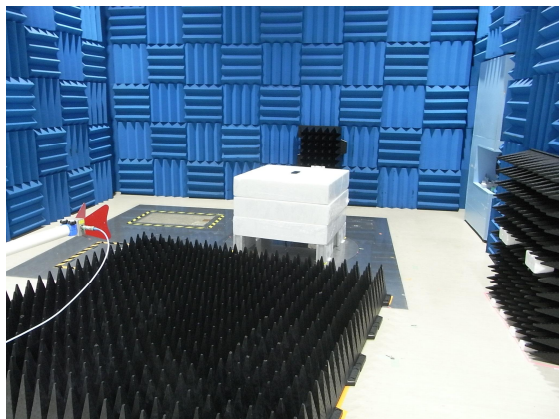
Above 1GHz

FCC Part 15 Subpart C



Above 1GHz

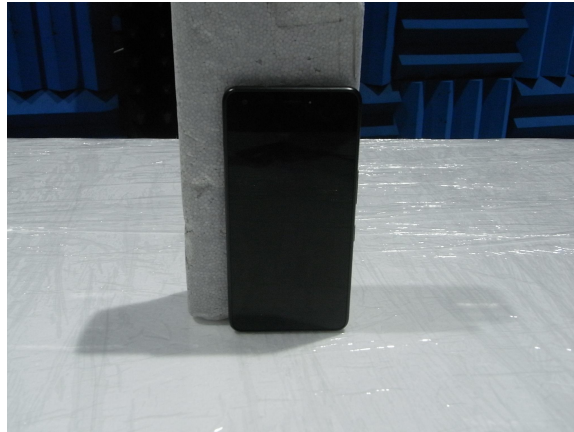
Other than the FCC Part 15 Subpart C



X-axis



Y-axis



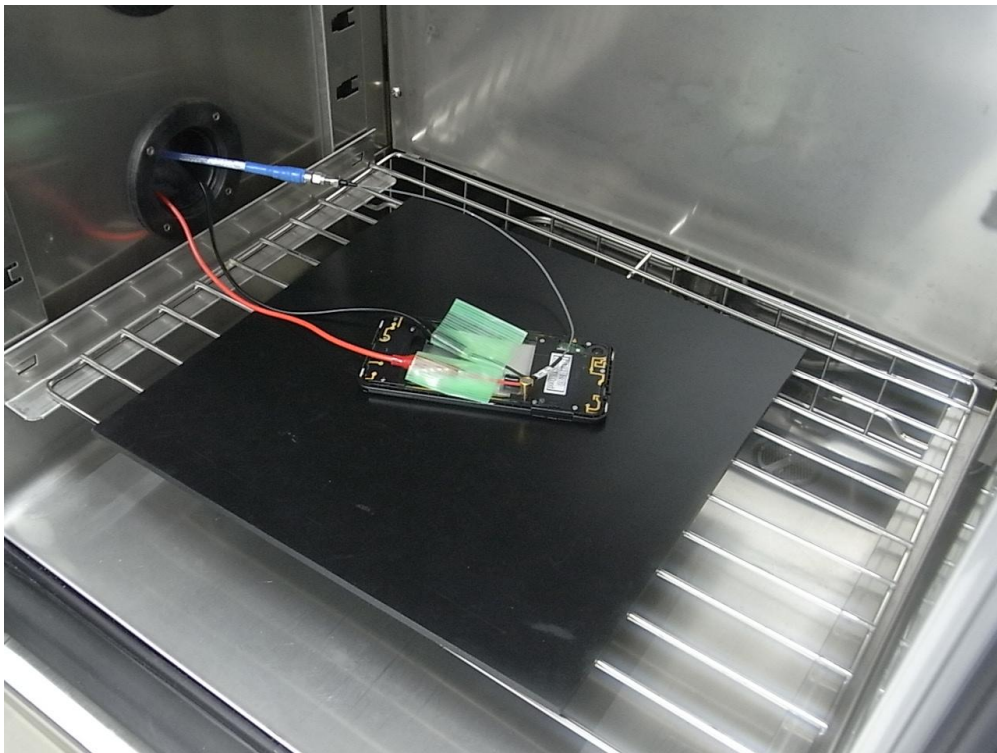
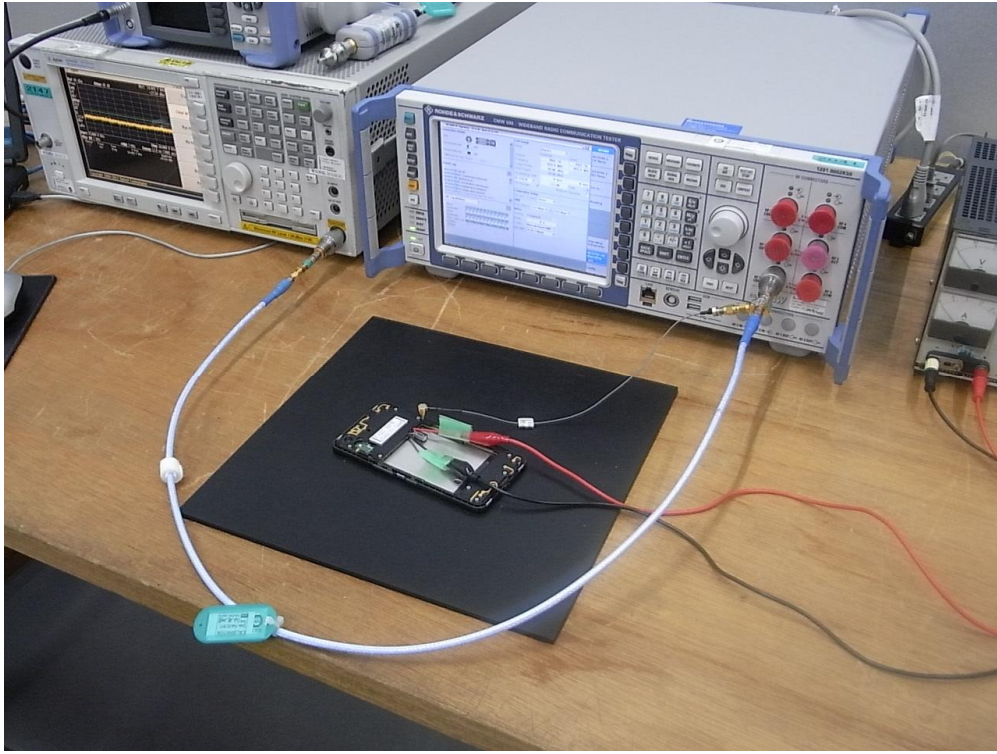
Z-axis



Note:

X-axis generates the maximum emission at FCC Part 24 Subpart E, FCC Part 27 Subpart C and L, 2.4GHz WLAN, Bluetooth and BTLE.

Antenna port Conducted Test



AC Power Line Conducted Emission

