

Dipole Verification Plots

DIGITAL EMC CO., LTD

DUT: Dipole 835 MHz; Type: D835V2; Serial: D835V2 - SN:464

Communication System: CW; Frequency: 835 MHz; Duty Cycle: 1:1

Medium parameters used: $f = 835 \text{ MHz}$; $\sigma = 0.882 \text{ mho/m}$; $\epsilon_r = 43$; $\rho = 1000 \text{ kg/m}^3$

Phantom section: Flat Section

DASY4 Configuration:

Probe: EX3DV4 - SN3643; ConvF(9.15, 9.15, 9.15); Calibrated: 2013-01-24; Electronics: DAE3 Sn519

Phantom: SAM with 835MHz; Type: SAM; Serial: TP-1223

Measurement SW: DASY4, V4.7 Build 80; Postprocessing SW: SEMCAD, V1.8 Build 186

Test Date: 2013-05-07; Ambient Temp: 22.0; Tissue Temp: 22.6

835 MHz System Verification

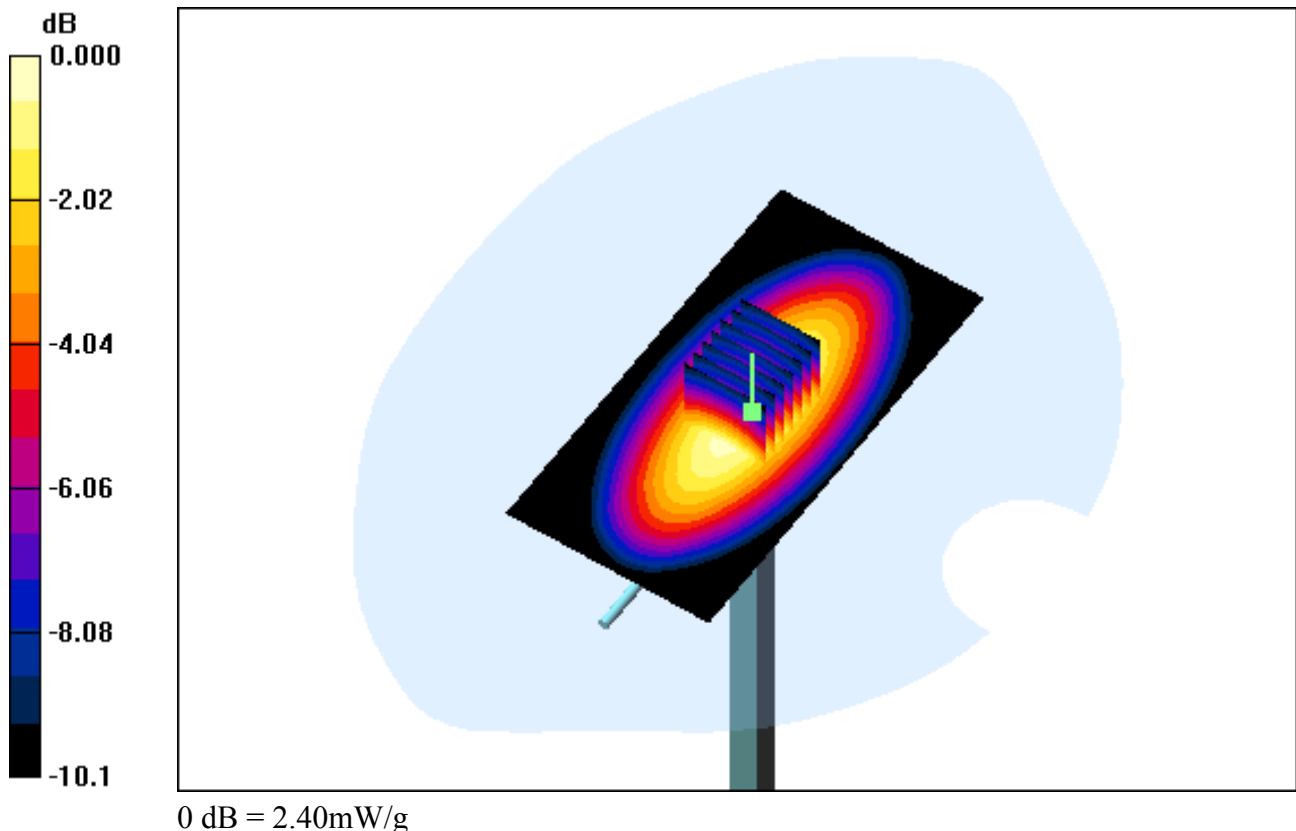
Area Scan (51x101x1): Measurement grid: $dx=15\text{mm}$, $dy=15\text{mm}$

Zoom Scan (7x7x7)/Cube 0: Measurement grid: $dx=5\text{mm}$, $dy=5\text{mm}$, $dz=5\text{mm}$

Power Drift = 0.044 dB

Peak SAR (extrapolated) = 3.33 W/kg

SAR(1 g) = 2.22 mW/g; SAR(10 g) = 1.46 mW/g



DIGITAL EMC CO., LTD

DUT: Dipole 835 MHz; Type: D835V2; Serial: D835V2 - SN:464

Communication System: CW; Frequency: 835 MHz; Duty Cycle: 1:1

Medium parameters used: $f = 835$ MHz; $\sigma = 0.882$ mho/m; $\epsilon_r = 43$; $\rho = 1000$ kg/m³

Phantom section: Flat Section

DASY4 Configuration:

Probe: EX3DV4 - SN3643; ConvF(9.15, 9.15, 9.15); Calibrated: 2013-01-24; Electronics: DAE3 Sn519

Phantom: SAM with 835MHz; Type: SAM; Serial: TP-1223

Measurement SW: DASY4, V4.7 Build 80; Postprocessing SW: SEMCAD, V1.8 Build 186

Test Date: 2013-05-07; Ambient Temp: 22.0; Tissue Temp: 22.6

835 MHz System Verification

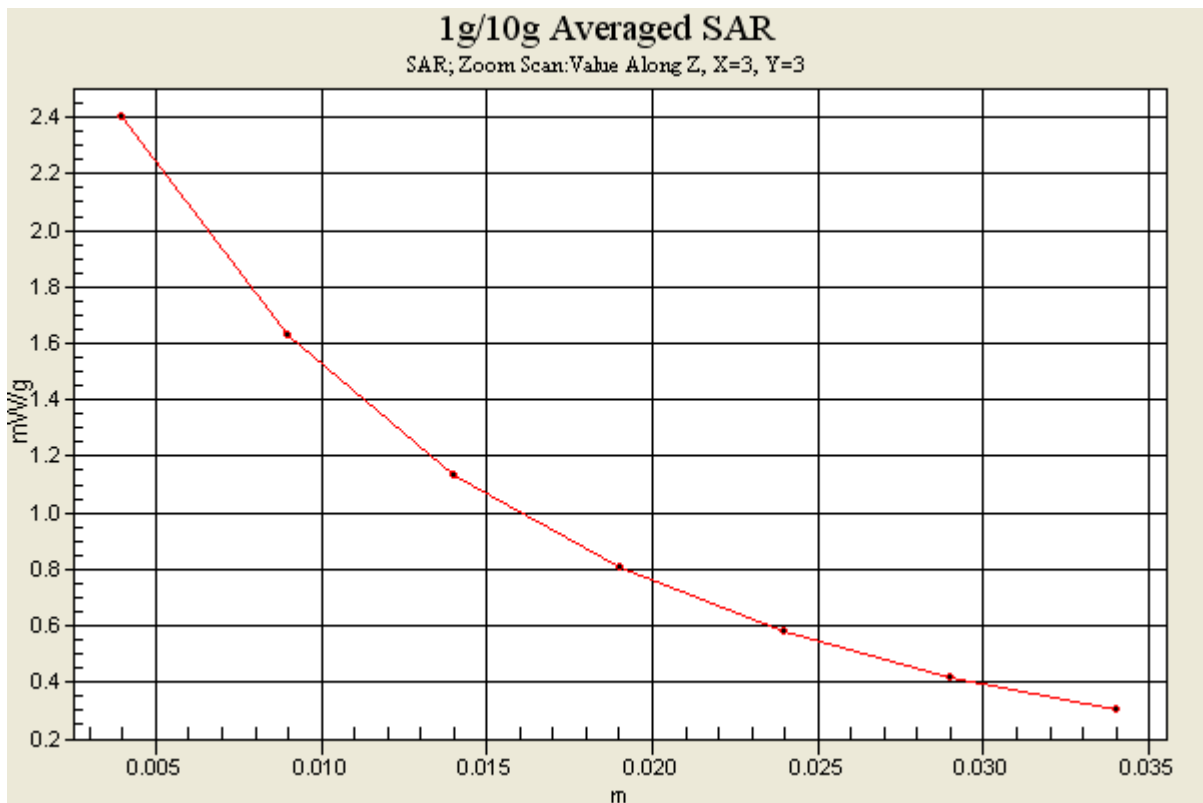
Area Scan (51x101x1): Measurement grid: dx=15mm, dy=15mm

Zoom Scan (7x7x7)/Cube 0: Measurement grid: dx=5mm, dy=5mm, dz=5mm

Power Drift = 0.044 dB

Peak SAR (extrapolated) = 3.33 W/kg

SAR(1 g) = 2.22 mW/g; SAR(10 g) = 1.46 mW/g



DIGITAL EMC CO., LTD

DUT: Dipole 835 MHz; Type: D835V2; Serial: D835V2 - SN:464

Communication System: CW; Frequency: 835 MHz; Duty Cycle: 1:1

Medium parameters used: $f = 835 \text{ MHz}$; $\sigma = 0.961 \text{ mho/m}$; $\epsilon_r = 54$; $\rho = 1000 \text{ kg/m}^3$

Phantom section: Flat Section

DASY4 Configuration:

Probe: EX3DV4 - SN3643; ConvF(9.14, 9.14, 9.14); Calibrated: 2013-01-24; Electronics: DAE3 Sn519

Phantom: SAM with 835MHz; Type: SAM; Serial: TP-1223

Measurement SW: DASY4, V4.7 Build 80; Postprocessing SW: SEMCAD, V1.8 Build 186

Test Date: 2013-05-07; Ambient Temp: 22.0; Tissue Temp: 22.6

835 MHz System Verification

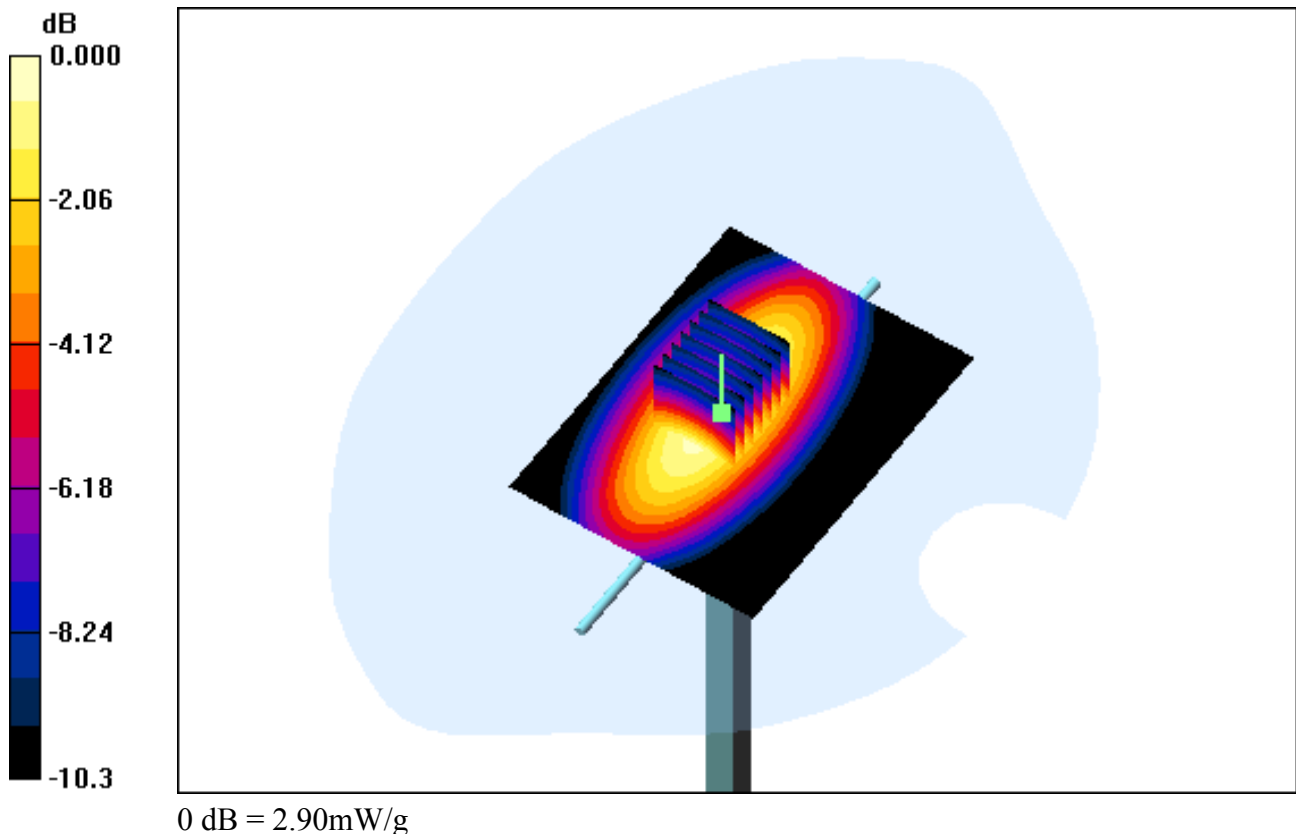
Area Scan (61x81x1): Measurement grid: $dx=15\text{mm}$, $dy=15\text{mm}$

Zoom Scan (7x7x7)/Cube 0: Measurement grid: $dx=5\text{mm}$, $dy=5\text{mm}$, $dz=5\text{mm}$

Power Drift = -0.035 dB

Peak SAR (extrapolated) = 3.55 W/kg

SAR(1 g) = 2.38 mW/g; SAR(10 g) = 1.56 mW/g



DIGITAL EMC CO., LTD

DUT: Dipole 835 MHz; Type: D835V2; Serial: D835V2 - SN:464

Communication System: CW; Frequency: 835 MHz; Duty Cycle: 1:1

Medium parameters used: $f = 835 \text{ MHz}$; $\sigma = 0.961 \text{ mho/m}$; $\epsilon_r = 54$; $\rho = 1000 \text{ kg/m}^3$

Phantom section: Flat Section

DASY4 Configuration:

Probe: EX3DV4 - SN3643; ConvF(9.14, 9.14, 9.14); Calibrated: 2013-01-24; Electronics: DAE3 Sn519

Phantom: SAM with 835MHz; Type: SAM; Serial: TP-1223

Measurement SW: DASY4, V4.7 Build 80; Postprocessing SW: SEMCAD, V1.8 Build 186

Test Date: 2013-05-07; Ambient Temp: 22.0; Tissue Temp: 22.6

835 MHz System Verification

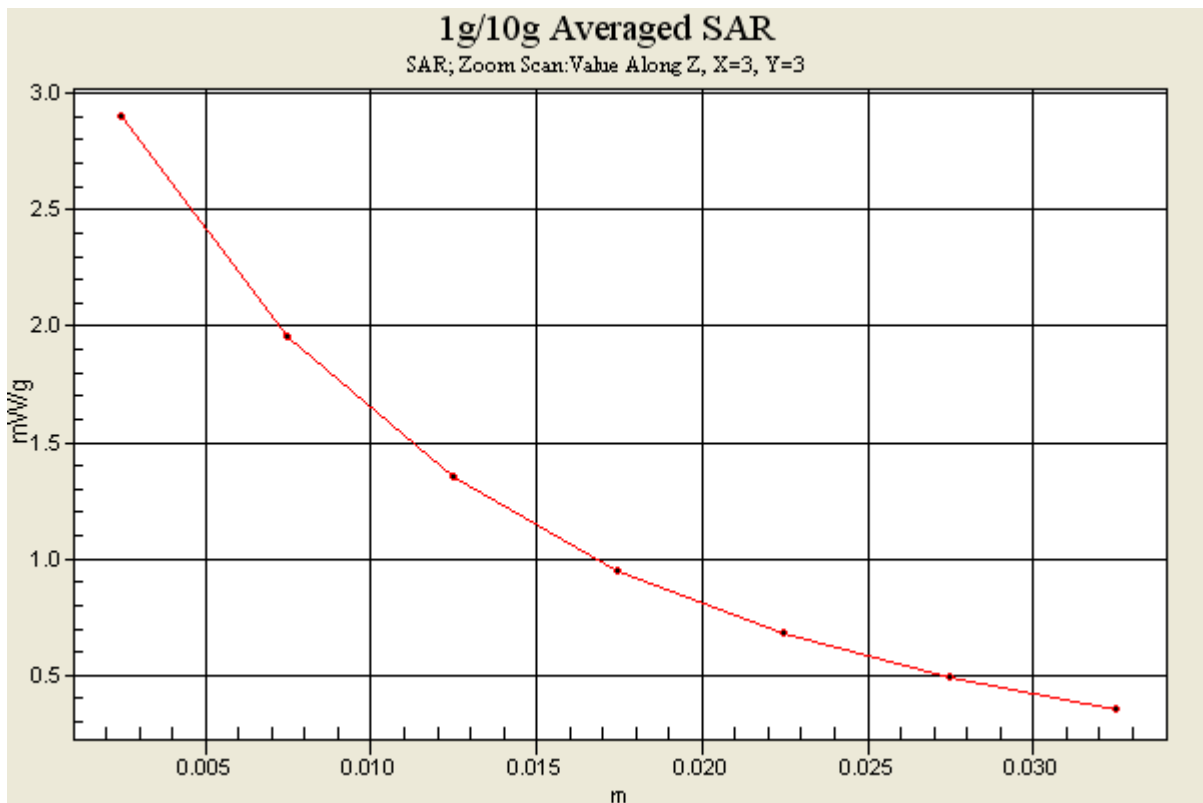
Area Scan (61x81x1): Measurement grid: $dx=15\text{mm}$, $dy=15\text{mm}$

Zoom Scan (7x7x7)/Cube 0: Measurement grid: $dx=5\text{mm}$, $dy=5\text{mm}$, $dz=5\text{mm}$

Power Drift = -0.035 dB

Peak SAR (extrapolated) = 3.55 W/kg

SAR(1 g) = 2.38 mW/g; SAR(10 g) = 1.56 mW/g



DIGITAL EMC CO., LTD

DUT: Dipole 835 MHz; Type: D835V2; Serial: D835V2 - SN:464

Communication System: CW; Frequency: 835 MHz; Duty Cycle: 1:1

Medium parameters used: $f = 835$ MHz; $\sigma = 0.876$ mho/m; $\epsilon_r = 43$; $\rho = 1000$ kg/m³

Phantom section: Flat Section

DASY4 Configuration:

Probe: EX3DV4 - SN3643; ConvF(9.15, 9.15, 9.15); Calibrated: 2013-01-24; Electronics: DAE3 Sn519

Phantom: SAM with 835MHz; Type: SAM; Serial: TP-1223

Measurement SW: DASY4, V4.7 Build 80; Postprocessing SW: SEMCAD, V1.8 Build 186

Test Date: 2013-05-09; Ambient Temp: 21.9; Tissue Temp: 22.3

835 MHz System Verification

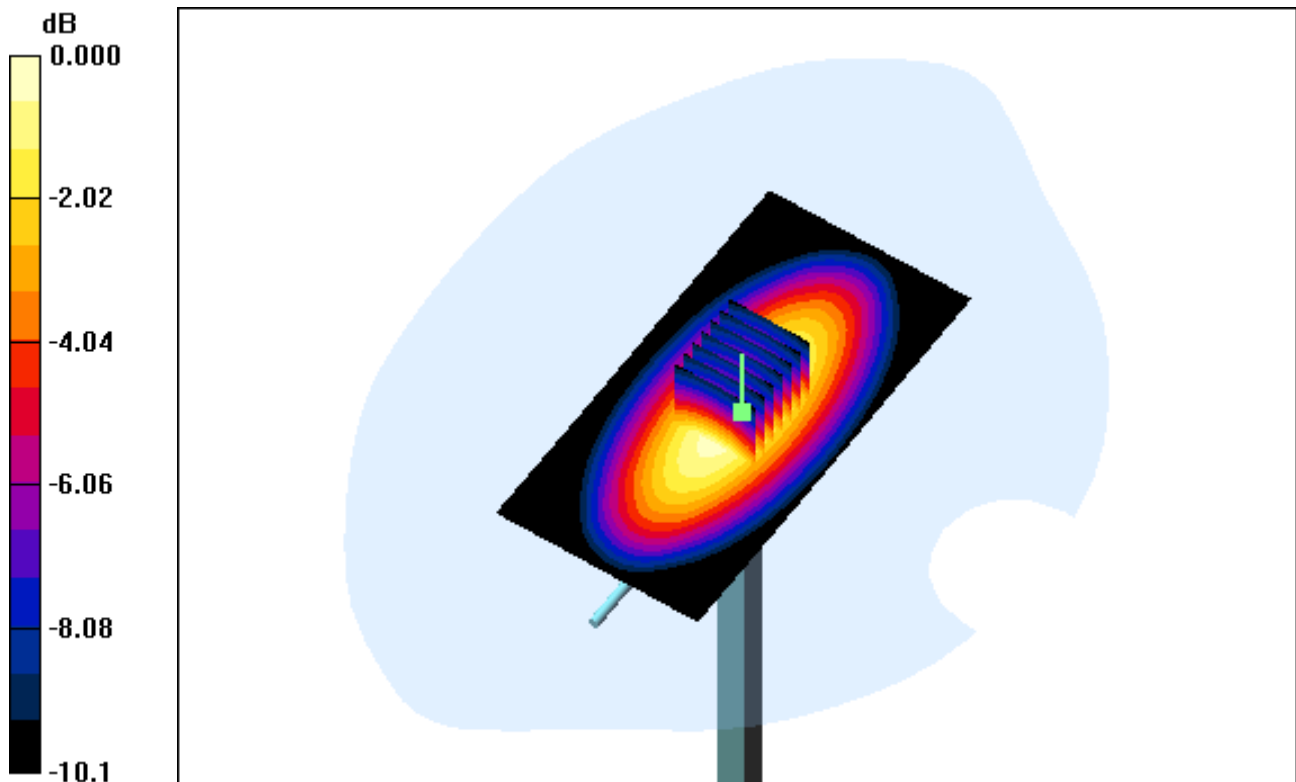
Area Scan (51x101x1): Measurement grid: dx=15mm, dy=15mm

Zoom Scan (7x7x7)/Cube 0: Measurement grid: dx=5mm, dy=5mm, dz=5mm

Power Drift = -0.005 dB

Peak SAR (extrapolated) = 3.28 W/kg

SAR(1 g) = 2.19 mW/g; SAR(10 g) = 1.44 mW/g



0 dB = 2.36mW/g

DIGITAL EMC CO., LTD

DUT: Dipole 835 MHz; Type: D835V2; Serial: D835V2 - SN:464

Communication System: CW; Frequency: 835 MHz; Duty Cycle: 1:1

Medium parameters used: $f = 835 \text{ MHz}$; $\sigma = 0.876 \text{ mho/m}$; $\epsilon_r = 43$; $\rho = 1000 \text{ kg/m}^3$

Phantom section: Flat Section

DASY4 Configuration:

Probe: EX3DV4 - SN3643; ConvF(9.15, 9.15, 9.15); Calibrated: 2013-01-24; Electronics: DAE3 Sn519

Phantom: SAM with 835MHz; Type: SAM; Serial: TP-1223

Measurement SW: DASY4, V4.7 Build 80; Postprocessing SW: SEMCAD, V1.8 Build 186

Test Date: 2013-05-09; Ambient Temp: 21.9; Tissue Temp: 22.3

835 MHz System Verification

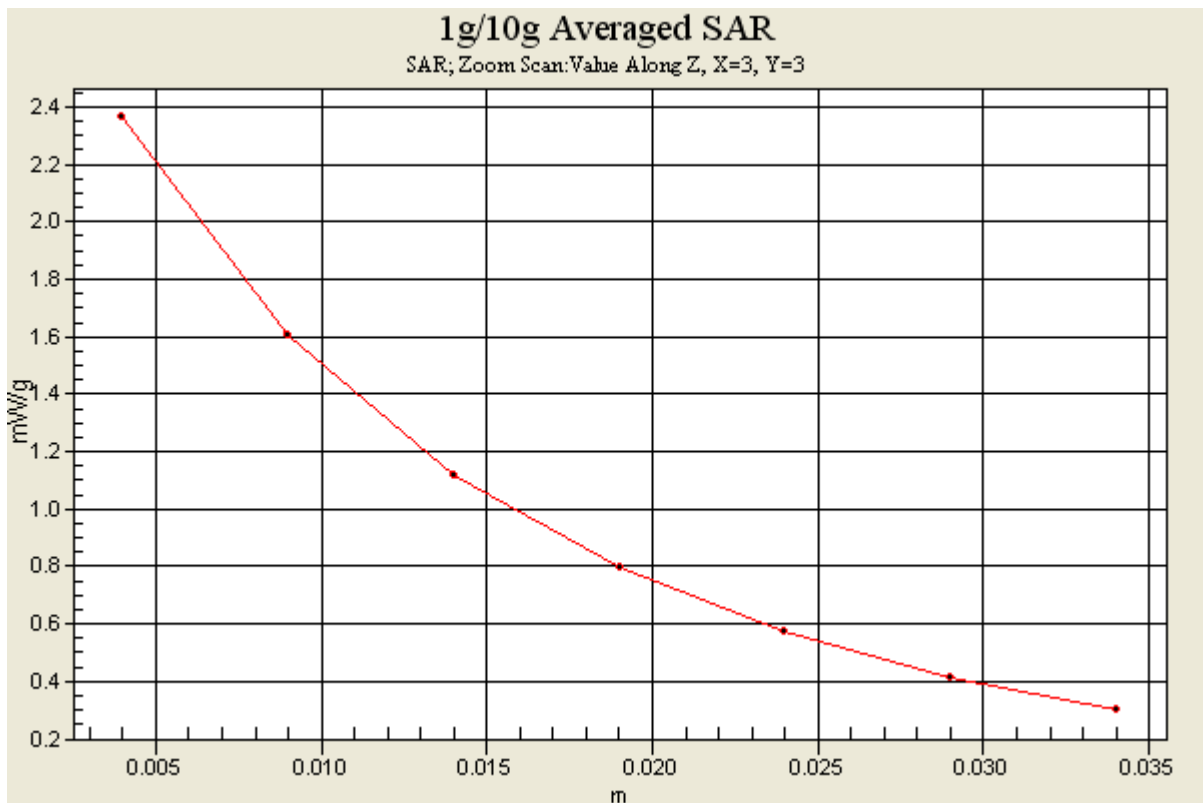
Area Scan (51x101x1): Measurement grid: $dx=15\text{mm}$, $dy=15\text{mm}$

Zoom Scan (7x7x7)/Cube 0: Measurement grid: $dx=5\text{mm}$, $dy=5\text{mm}$, $dz=5\text{mm}$

Power Drift = -0.005 dB

Peak SAR (extrapolated) = 3.28 W/kg

SAR(1 g) = 2.19 mW/g; SAR(10 g) = 1.44 mW/g



DIGITAL EMC CO., LTD

DUT: Dipole 835 MHz; Type: D835V2; Serial: D835V2 - SN:464

Communication System: CW; Frequency: 835 MHz; Duty Cycle: 1:1
Medium parameters used: $f = 835$ MHz; $\sigma = 0.96$ mho/m; $\epsilon_r = 54$; $\rho = 1000$ kg/m³
Phantom section: Flat Section

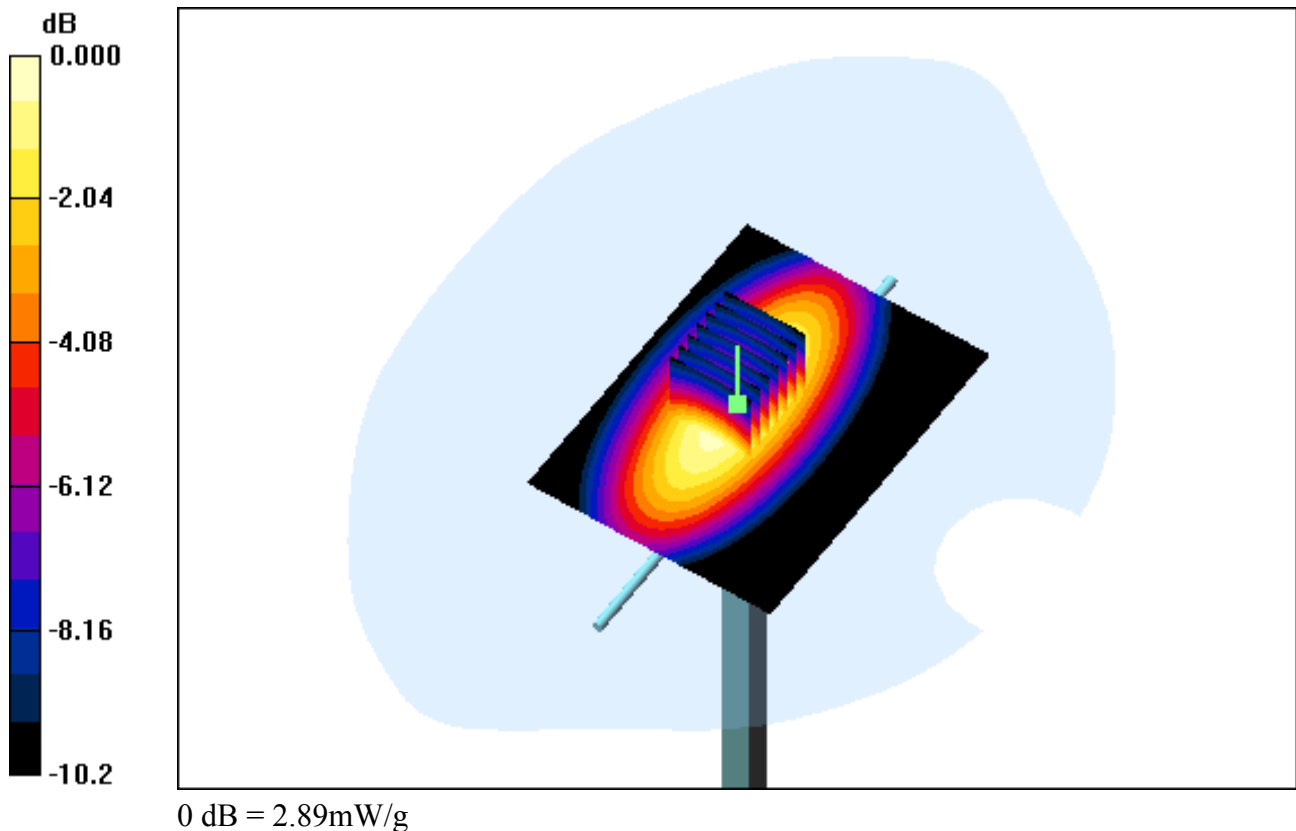
DASY4 Configuration:

Probe: EX3DV4 - SN3643; ConvF(9.14, 9.14, 9.14); Calibrated: 2013-01-24; Electronics: DAE3 Sn519
Phantom: SAM with 835MHz; Type: SAM; Serial: TP-1223
Measurement SW: DASY4, V4.7 Build 80; Postprocessing SW: SEMCAD, V1.8 Build 186

Test Date: 2013-05-09; Ambient Temp: 21.9; Tissue Temp: 22.3

835 MHz System Verification

Area Scan (61x81x1): Measurement grid: dx=15mm, dy=15mm
Zoom Scan (7x7x7)/Cube 0: Measurement grid: dx=5mm, dy=5mm, dz=5mm
Power Drift = 0.014 dB
Peak SAR (extrapolated) = 3.54 W/kg
SAR(1 g) = 2.38 mW/g; SAR(10 g) = 1.57 mW/g



DIGITAL EMC CO., LTD

DUT: Dipole 835 MHz; Type: D835V2; Serial: D835V2 - SN:464

Communication System: CW; Frequency: 835 MHz; Duty Cycle: 1:1
Medium parameters used: $f = 835$ MHz; $\sigma = 0.96$ mho/m; $\epsilon_r = 54$; $\rho = 1000$ kg/m³
Phantom section: Flat Section

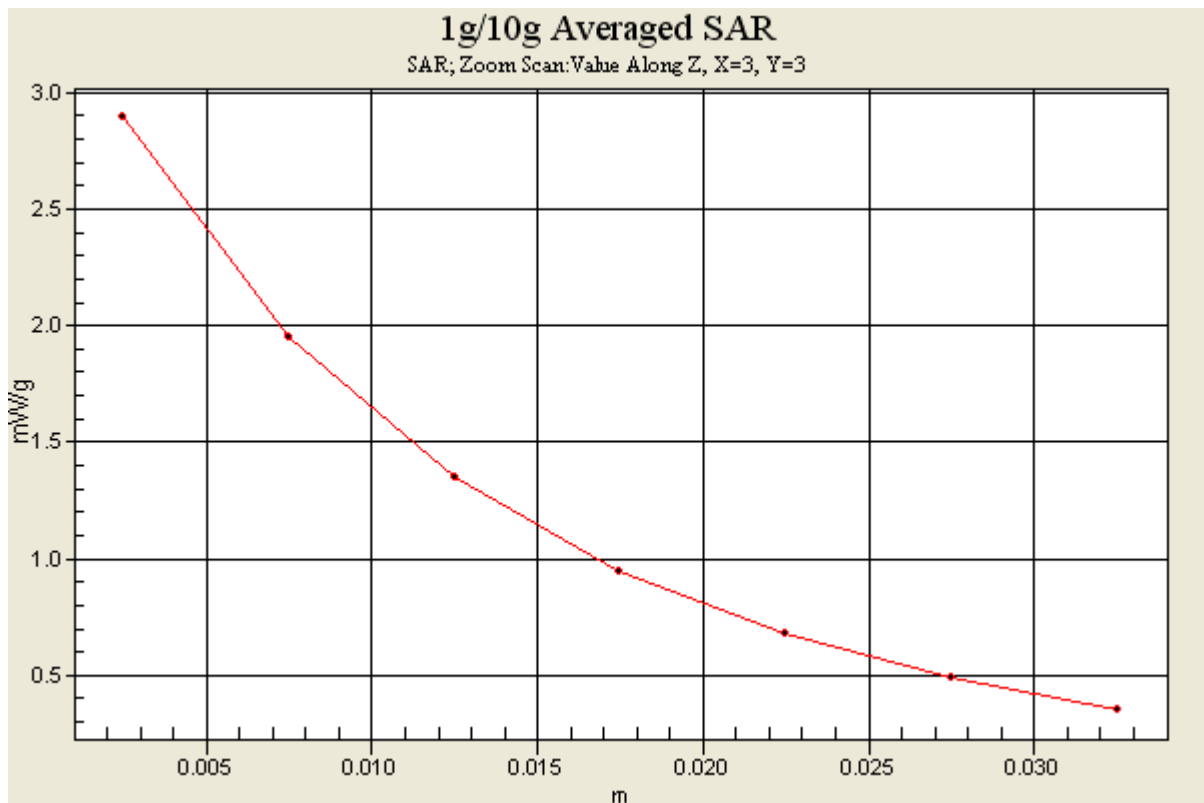
DASY4 Configuration:

Probe: EX3DV4 - SN3643; ConvF(9.14, 9.14, 9.14); Calibrated: 2013-01-24; Electronics: DAE3 Sn519
Phantom: SAM with 835MHz; Type: SAM; Serial: TP-1223
Measurement SW: DASY4, V4.7 Build 80; Postprocessing SW: SEMCAD, V1.8 Build 186

Test Date: 2013-05-09; Ambient Temp: 21.9; Tissue Temp: 22.3

835 MHz System Verification

Area Scan (61x81x1): Measurement grid: dx=15mm, dy=15mm
Zoom Scan (7x7x7)/Cube 0: Measurement grid: dx=5mm, dy=5mm, dz=5mm
Power Drift = 0.014 dB
Peak SAR (extrapolated) = 3.54 W/kg
SAR(1 g) = 2.38 mW/g; SAR(10 g) = 1.57 mW/g



DIGITAL EMC CO., LTD

DUT: Dipole 835 MHz; Type: D835V2; Serial: D835V2 - SN:464

Communication System: CW; Frequency: 835 MHz; Duty Cycle: 1:1

Medium parameters used: $f = 835 \text{ MHz}$; $\sigma = 0.877 \text{ mho/m}$; $\epsilon_r = 42.8$; $\rho = 1000 \text{ kg/m}^3$

Phantom section: Flat Section

DASY4 Configuration:

Probe: EX3DV4 - SN3643; ConvF(9.15, 9.15, 9.15); Calibrated: 2013-01-24; Electronics: DAE3 Sn519

Phantom: SAM with 835MHz; Type: SAM; Serial: TP-1223

Measurement SW: DASY4, V4.7 Build 80; Postprocessing SW: SEMCAD, V1.8 Build 186

Test Date: 2013-05-10; Ambient Temp: 22.4; Tissue Temp: 22.6

835 MHz System Verification

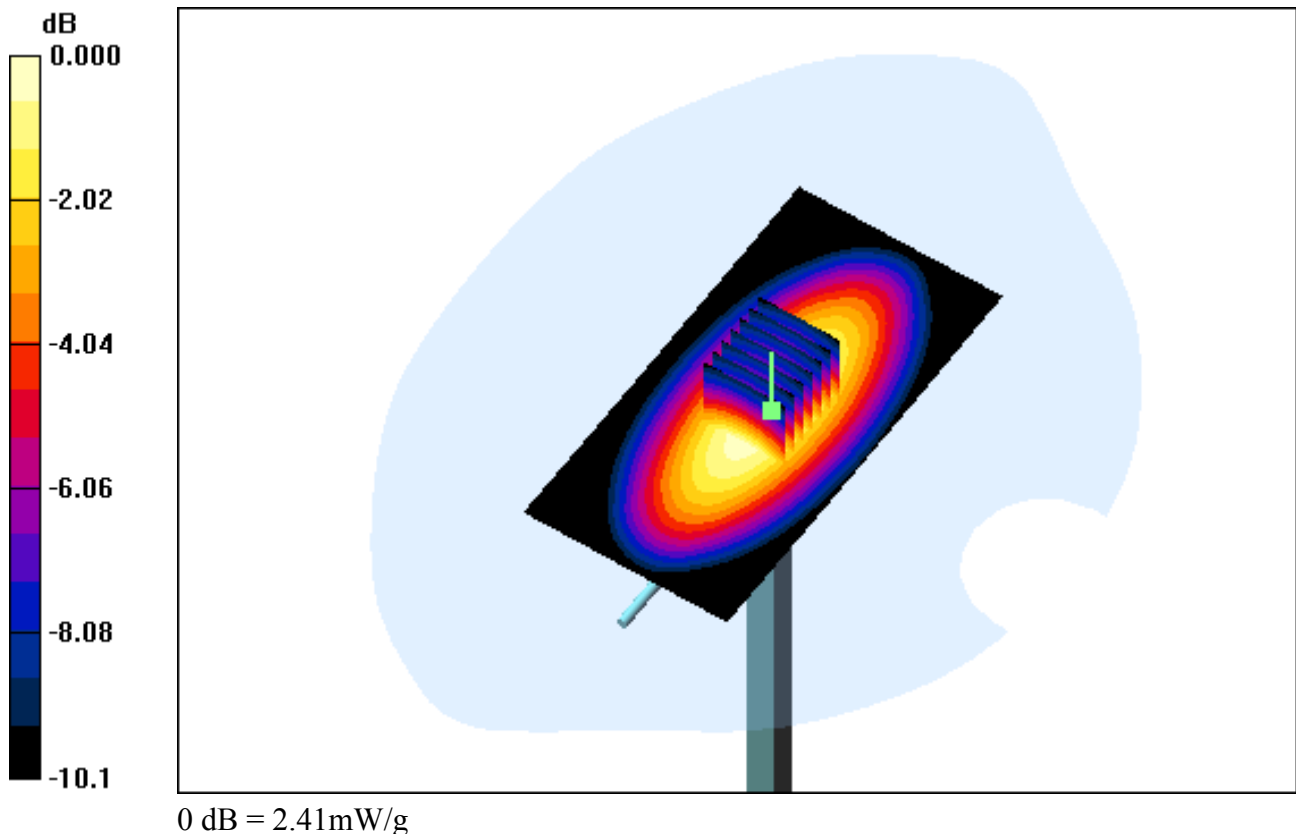
Area Scan (51x101x1): Measurement grid: $dx=15\text{mm}$, $dy=15\text{mm}$

Zoom Scan (7x7x7)/Cube 0: Measurement grid: $dx=5\text{mm}$, $dy=5\text{mm}$, $dz=5\text{mm}$

Power Drift = -0.136 dB

Peak SAR (extrapolated) = 3.34 W/kg

SAR(1 g) = 2.23 mW/g; SAR(10 g) = 1.47 mW/g



DIGITAL EMC CO., LTD

DUT: Dipole 835 MHz; Type: D835V2; Serial: D835V2 - SN:464

Communication System: CW; Frequency: 835 MHz; Duty Cycle: 1:1

Medium parameters used: $f = 835$ MHz; $\sigma = 0.877$ mho/m; $\epsilon_r = 42.8$; $\rho = 1000$ kg/m³

Phantom section: Flat Section

DASY4 Configuration:

Probe: EX3DV4 - SN3643; ConvF(9.15, 9.15, 9.15); Calibrated: 2013-01-24; Electronics: DAE3 Sn519

Phantom: SAM with 835MHz; Type: SAM; Serial: TP-1223

Measurement SW: DASY4, V4.7 Build 80; Postprocessing SW: SEMCAD, V1.8 Build 186

Test Date: 2013-05-10; Ambient Temp: 22.4; Tissue Temp: 22.6

835 MHz System Verification

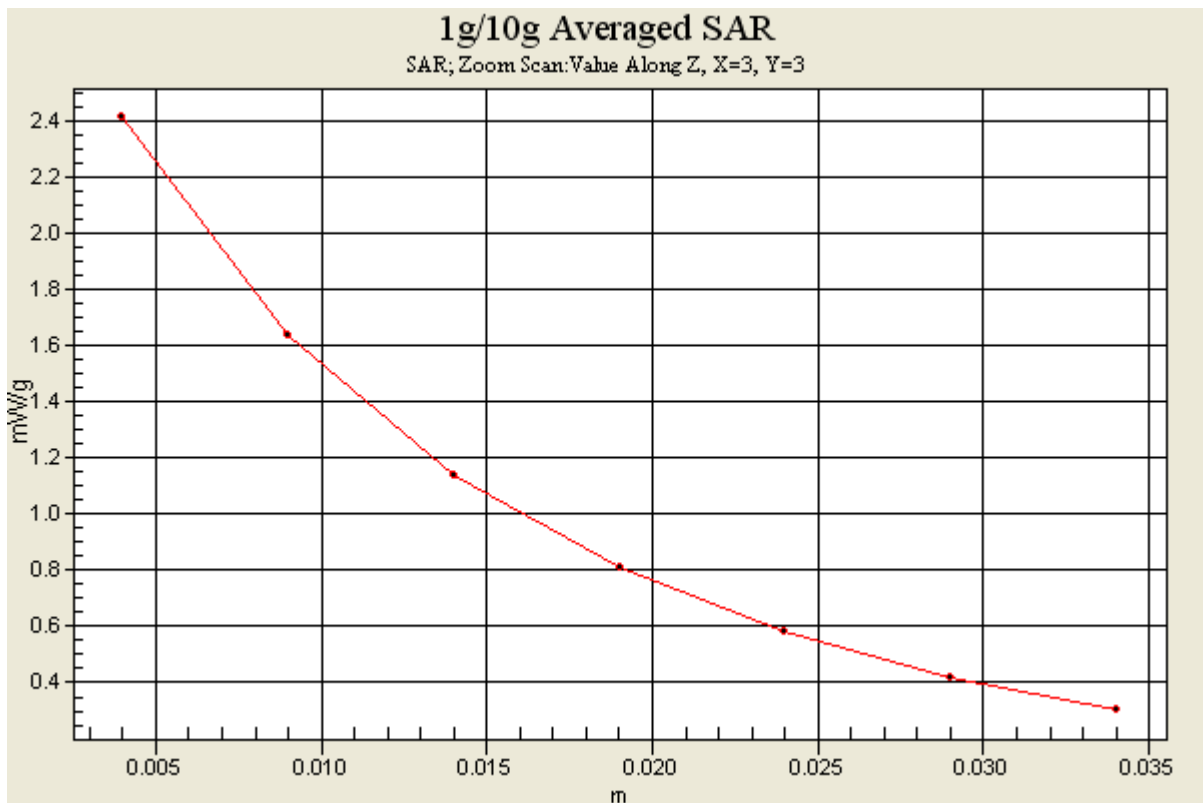
Area Scan (51x101x1): Measurement grid: dx=15mm, dy=15mm

Zoom Scan (7x7x7)/Cube 0: Measurement grid: dx=5mm, dy=5mm, dz=5mm

Power Drift = -0.136 dB

Peak SAR (extrapolated) = 3.34 W/kg

SAR(1 g) = 2.23 mW/g; SAR(10 g) = 1.47 mW/g



DIGITAL EMC CO., LTD

DUT: Dipole 835 MHz; Type: D835V2; Serial: D835V2 - SN:464

Communication System: CW; Frequency: 835 MHz; Duty Cycle: 1:1

Medium parameters used: $f = 835 \text{ MHz}$; $\sigma = 0.959 \text{ mho/m}$; $\epsilon_r = 54$; $\rho = 1000 \text{ kg/m}^3$

Phantom section: Flat Section

DASY4 Configuration:

Probe: EX3DV4 - SN3643; ConvF(9.14, 9.14, 9.14); Calibrated: 2013-01-24; Electronics: DAE3 Sn519

Phantom: SAM with 835MHz; Type: SAM; Serial: TP-1223

Measurement SW: DASY4, V4.7 Build 80; Postprocessing SW: SEMCAD, V1.8 Build 186

Test Date: 2013-05-10; Ambient Temp: 22.4; Tissue Temp: 22.6

835 MHz System Verification

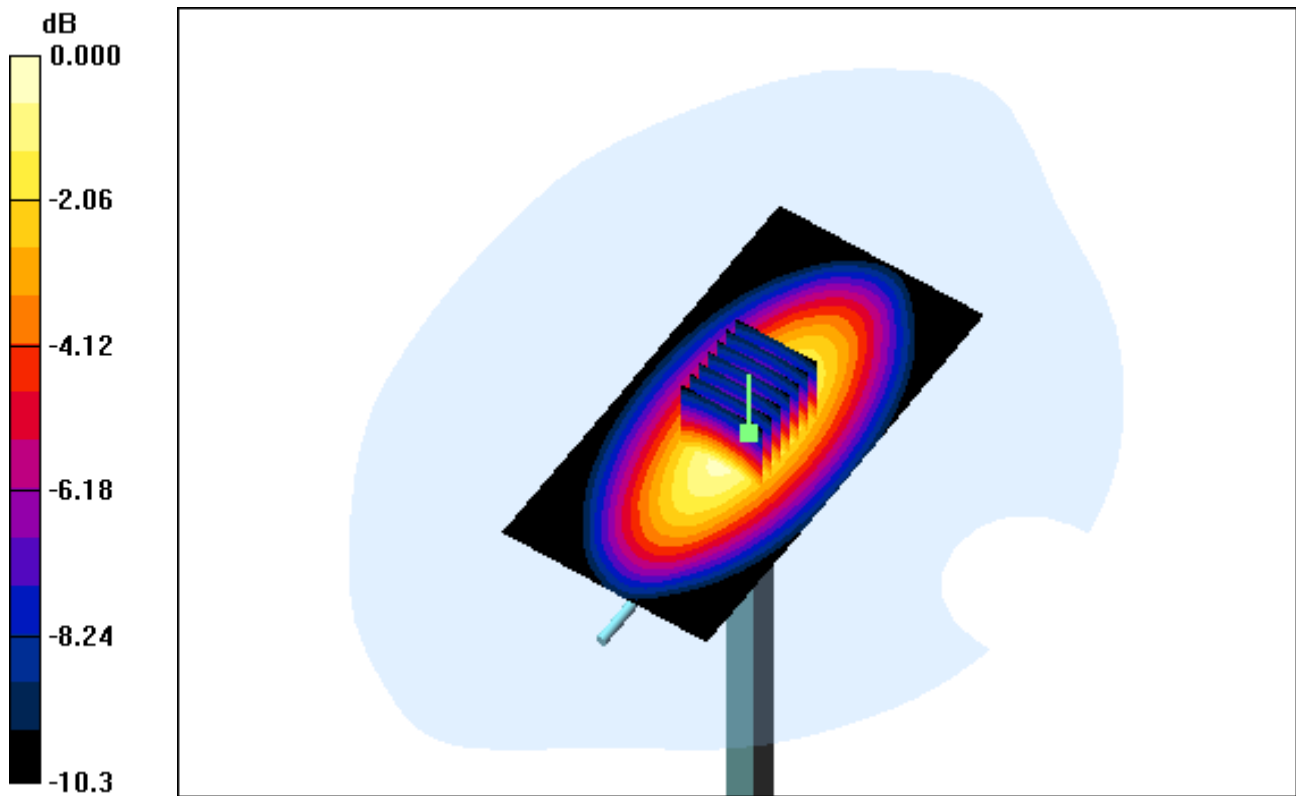
Area Scan (51x101x1): Measurement grid: $dx=15\text{mm}$, $dy=15\text{mm}$

Zoom Scan (7x7x7)/Cube 0: Measurement grid: $dx=5\text{mm}$, $dy=5\text{mm}$, $dz=5\text{mm}$

Power Drift = -0.005 dB

Peak SAR (extrapolated) = 3.81 W/kg

SAR(1 g) = 2.55 mW/g; SAR(10 g) = 1.67 mW/g



0 dB = 3.10mW/g

DIGITAL EMC CO., LTD

DUT: Dipole 835 MHz; Type: D835V2; Serial: D835V2 - SN:464

Communication System: CW; Frequency: 835 MHz; Duty Cycle: 1:1

Medium parameters used: $f = 835$ MHz; $\sigma = 0.959$ mho/m; $\epsilon_r = 54$; $\rho = 1000$ kg/m³

Phantom section: Flat Section

DASY4 Configuration:

Probe: EX3DV4 - SN3643; ConvF(9.14, 9.14, 9.14); Calibrated: 2013-01-24; Electronics: DAE3 Sn519

Phantom: SAM with 835MHz; Type: SAM; Serial: TP-1223

Measurement SW: DASY4, V4.7 Build 80; Postprocessing SW: SEMCAD, V1.8 Build 186

Test Date: 2013-05-10; Ambient Temp: 22.4; Tissue Temp: 22.6

835 MHz System Verification

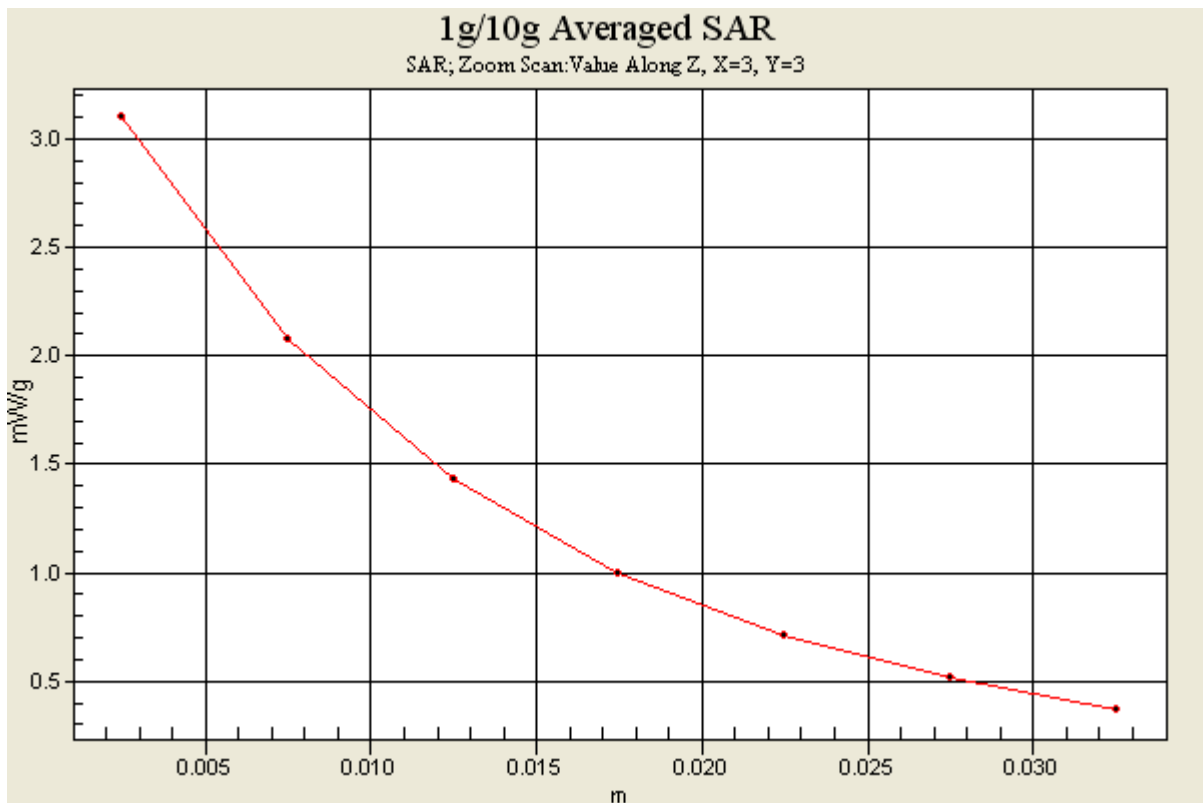
Area Scan (51x101x1): Measurement grid: dx=15mm, dy=15mm

Zoom Scan (7x7x7)/Cube 0: Measurement grid: dx=5mm, dy=5mm, dz=5mm

Power Drift = -0.005 dB

Peak SAR (extrapolated) = 3.81 W/kg

SAR(1 g) = 2.55 mW/g; SAR(10 g) = 1.67 mW/g



DIGITAL EMC CO., LTD

DUT: Dipole 1900 MHz; Type: D1900V2; Serial: D1900V2 - SN:5d029

Communication System: CW; Frequency: 1900 MHz; Duty Cycle: 1:1

Medium parameters used: $f = 1900$ MHz; $\sigma = 1.41$ mho/m; $\epsilon_r = 39.8$; $\rho = 1000$ kg/m³

Phantom section: Flat Section

DASY4 Configuration:

Probe: EX3DV4 - SN3643; ConvF(7.68, 7.68, 7.68); Calibrated: 2013-01-24; Electronics: DAE3 Sn519

Phantom: SAM 1800/1900 MHz; Type: SAM; Serial: TP-1224

Measurement SW: DASY4, V4.7 Build 80; Postprocessing SW: SEMCAD, V1.8 Build 186

Test Date: 2013-05-08; Ambient Temp: 22.2; Tissue Temp: 22.5

1900 MHz System Verification

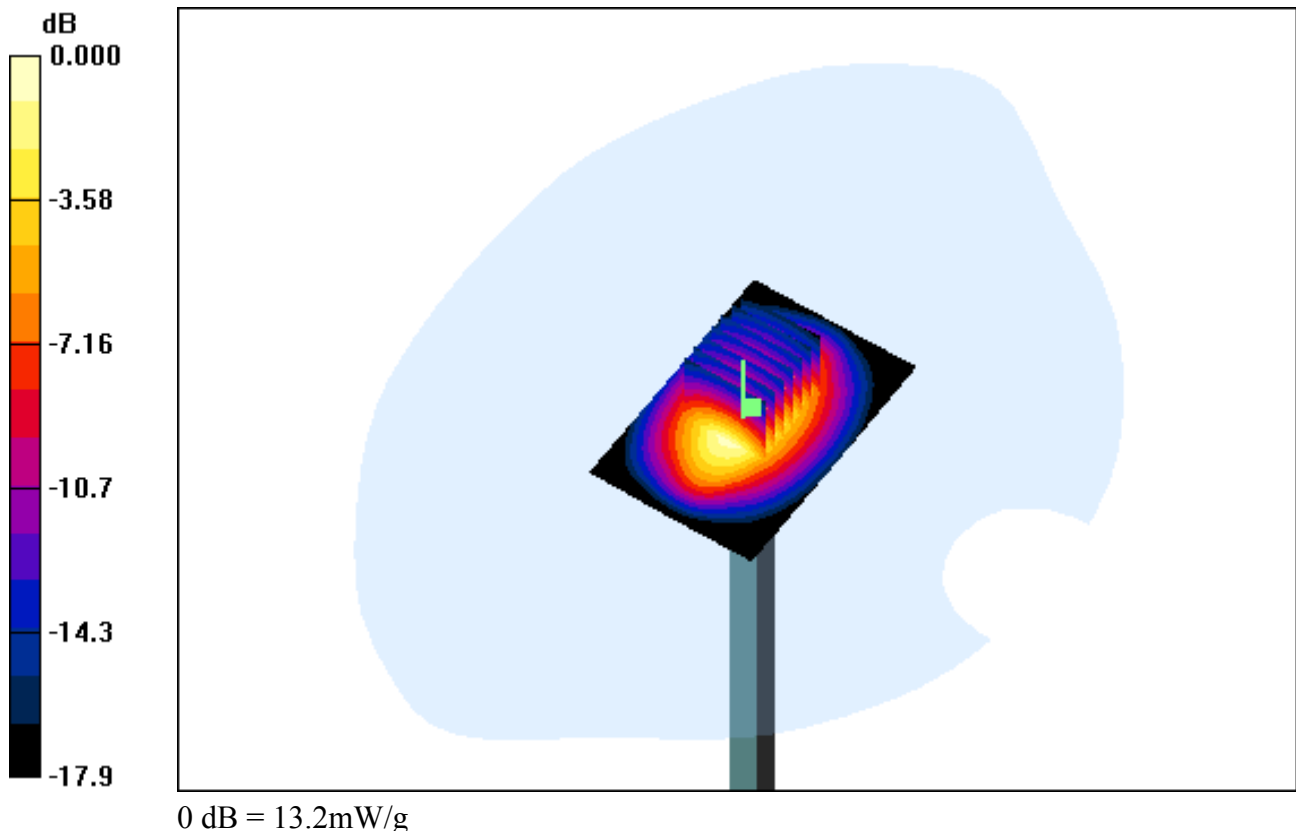
Area Scan (41x61x1): Measurement grid: dx=15mm, dy=15mm

Zoom Scan (7x7x7)/Cube 0: Measurement grid: dx=5mm, dy=5mm, dz=5mm

Power Drift = 0.023 dB

Peak SAR (extrapolated) = 18.3 W/kg

SAR(1 g) = 9.79 mW/g; SAR(10 g) = 5.13 mW/g



DIGITAL EMC CO., LTD

DUT: Dipole 1900 MHz; Type: D1900V2; Serial: D1900V2 - SN:5d029

Communication System: CW; Frequency: 1900 MHz; Duty Cycle: 1:1

Medium parameters used: $f = 1900$ MHz; $\sigma = 1.41$ mho/m; $\epsilon_r = 39.8$; $\rho = 1000$ kg/m³

Phantom section: Flat Section

DASY4 Configuration:

Probe: EX3DV4 - SN3643; ConvF(7.68, 7.68, 7.68); Calibrated: 2013-01-24; Electronics: DAE3 Sn519

Phantom: SAM 1800/1900 MHz; Type: SAM; Serial: TP-1224

Measurement SW: DASY4, V4.7 Build 80; Postprocessing SW: SEMCAD, V1.8 Build 186

Test Date: 2013-05-08; Ambient Temp: 22.2; Tissue Temp: 22.5

1900 MHz System Verification

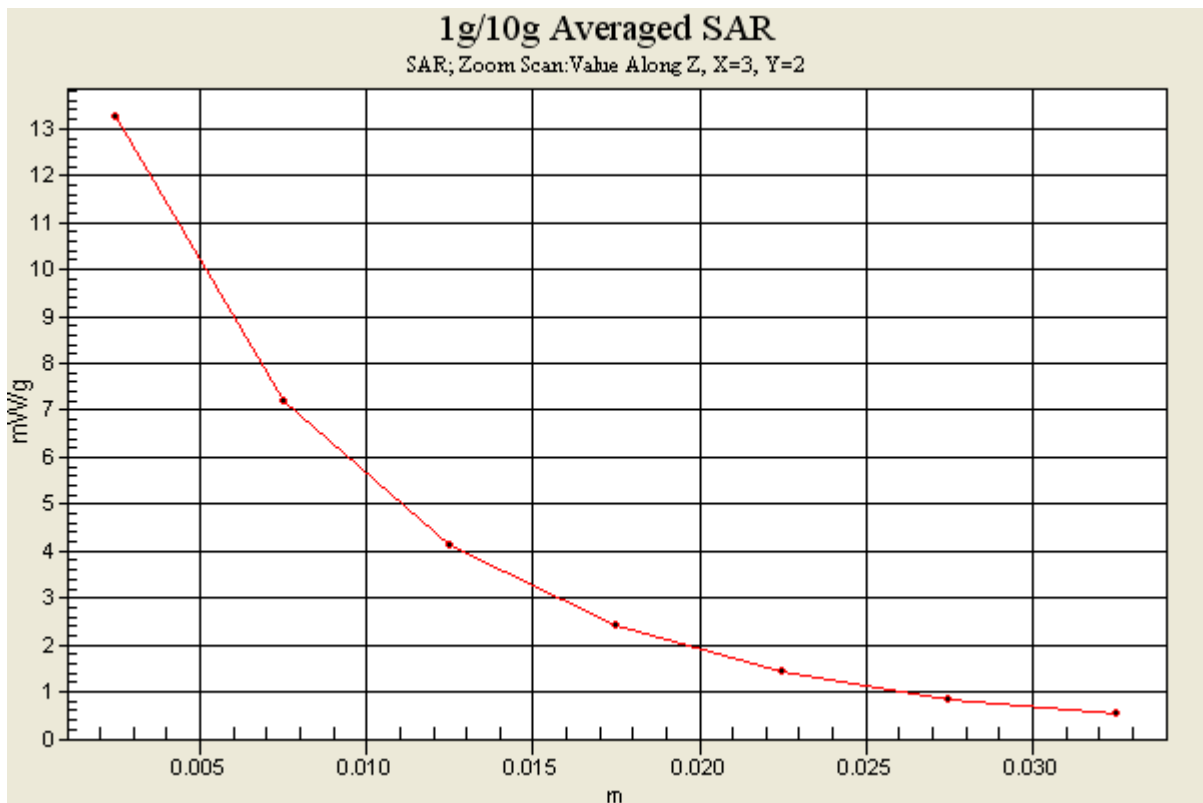
Area Scan (41x61x1): Measurement grid: dx=15mm, dy=15mm

Zoom Scan (7x7x7)/Cube 0: Measurement grid: dx=5mm, dy=5mm, dz=5mm

Power Drift = 0.023 dB

Peak SAR (extrapolated) = 18.3 W/kg

SAR(1 g) = 9.79 mW/g; SAR(10 g) = 5.13 mW/g



DIGITAL EMC CO., LTD

DUT: Dipole 1900 MHz; Type: D1900V2; Serial: D1900V2 - SN:5d029

Communication System: CW; Frequency: 1900 MHz; Duty Cycle: 1:1

Medium parameters used: $f = 1900$ MHz; $\sigma = 1.52$ mho/m; $\epsilon_r = 53.7$; $\rho = 1000$ kg/m³

Phantom section: Flat Section

DASY4 Configuration:

Probe: EX3DV4 - SN3643; ConvF(7.47, 7.47, 7.47); Calibrated: 2013-01-24; Electronics: DAE3 Sn519

Phantom: SAM 1800/1900 MHz; Type: SAM; Serial: TP-1224

Measurement SW: DASY4, V4.7 Build 80; Postprocessing SW: SEMCAD, V1.8 Build 186

Test Date: 2013-05-08; Ambient Temp: 22.2; Tissue Temp: 22.5

1900 MHz System Verification

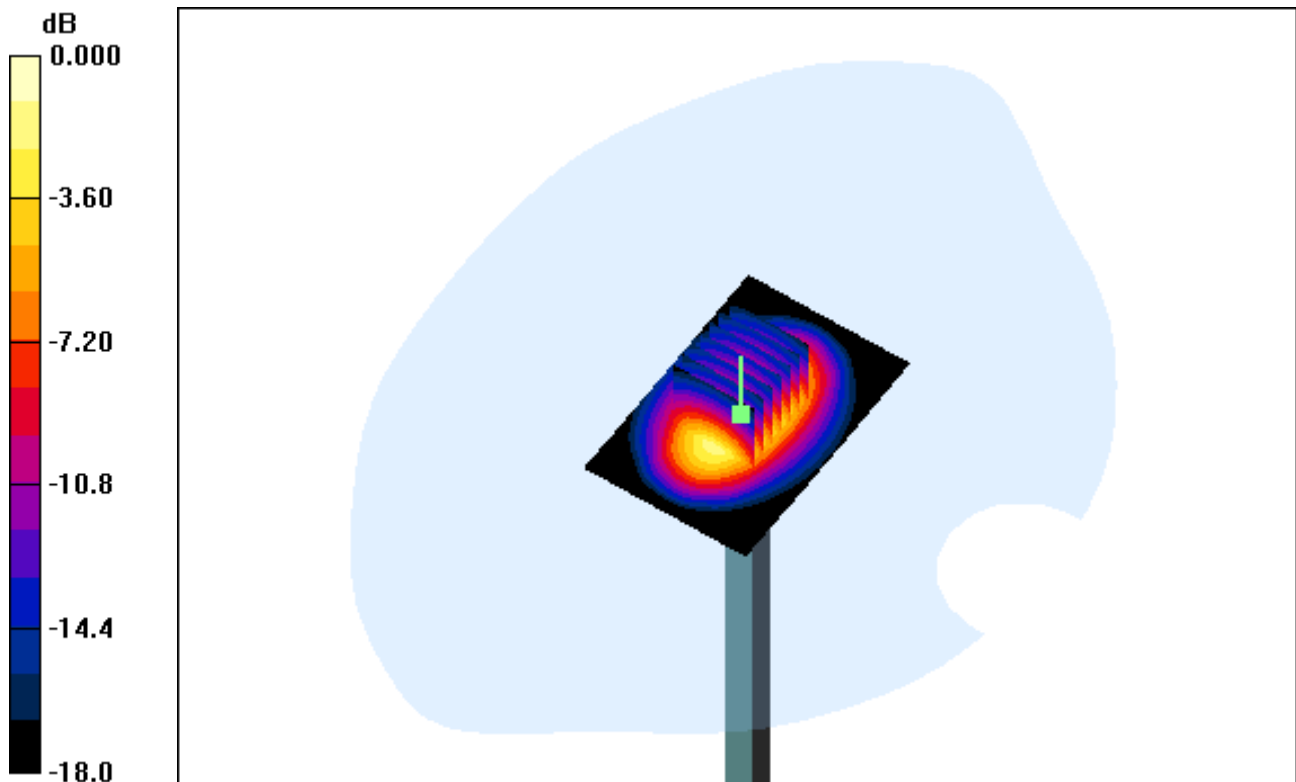
Area Scan (61x91x1): Measurement grid: dx=10mm, dy=10mm

Zoom Scan (7x7x7)/Cube 0: Measurement grid: dx=5mm, dy=5mm, dz=5mm

Power Drift = 0.028 dB

Peak SAR (extrapolated) = 19.1 W/kg

SAR(1 g) = 10.1 mW/g; SAR(10 g) = 5.16 mW/g



0 dB = 13.8mW/g

DIGITAL EMC CO., LTD

DUT: Dipole 1900 MHz; Type: D1900V2; Serial: D1900V2 - SN:5d029

Communication System: CW; Frequency: 1900 MHz; Duty Cycle: 1:1

Medium parameters used: $f = 1900$ MHz; $\sigma = 1.52$ mho/m; $\epsilon_r = 53.7$; $\rho = 1000$ kg/m³

Phantom section: Flat Section

DASY4 Configuration:

Probe: EX3DV4 - SN3643; ConvF(7.47, 7.47, 7.47); Calibrated: 2013-01-24; Electronics: DAE3 Sn519

Phantom: SAM 1800/1900 MHz; Type: SAM; Serial: TP-1224

Measurement SW: DASY4, V4.7 Build 80; Postprocessing SW: SEMCAD, V1.8 Build 186

Test Date: 2013-05-08; Ambient Temp: 22.2; Tissue Temp: 22.5

1900 MHz System Verification

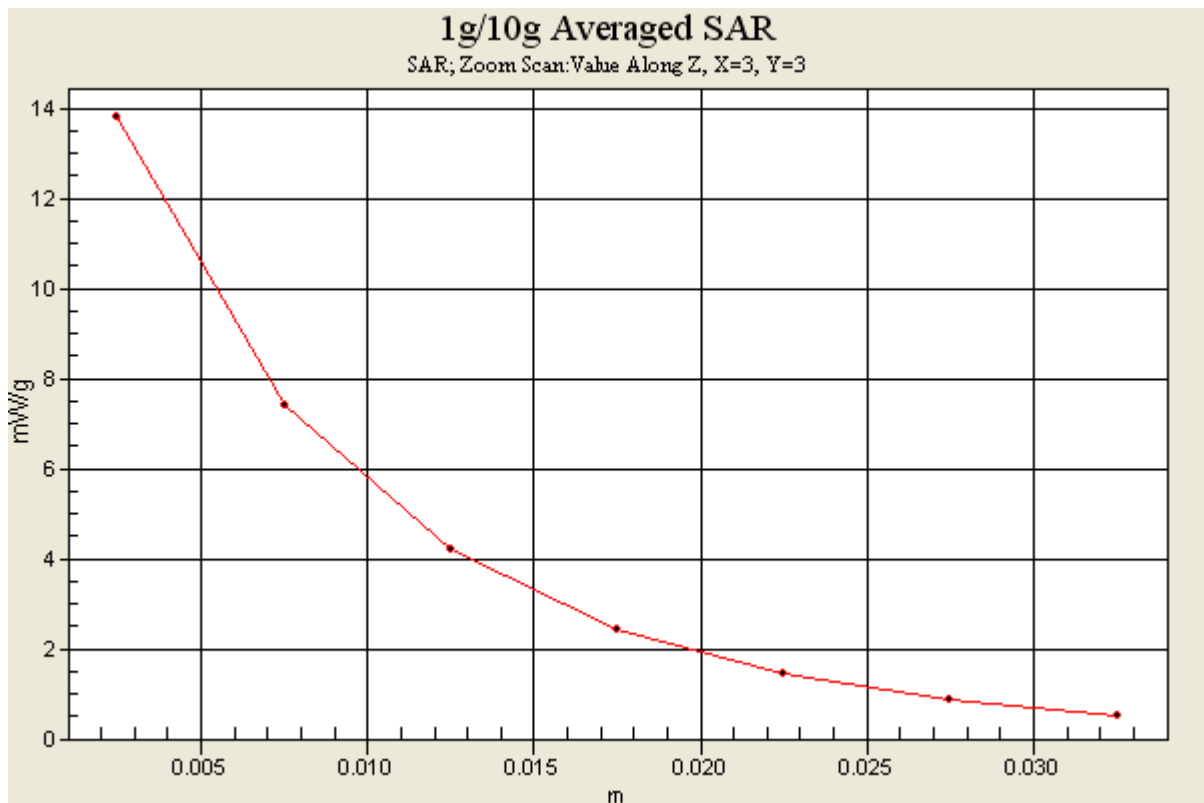
Area Scan (61x91x1): Measurement grid: dx=10mm, dy=10mm

Zoom Scan (7x7x7)/Cube 0: Measurement grid: dx=5mm, dy=5mm, dz=5mm

Power Drift = 0.028 dB

Peak SAR (extrapolated) = 19.1 W/kg

SAR(1 g) = 10.1 mW/g; SAR(10 g) = 5.16 mW/g



DIGITAL EMC CO., LTD

DUT: Dipole 2450 MHz; Type: D2450V2; Serial: D2450V2 - SN:726

Communication System: CW; Frequency: 2450 MHz; Duty Cycle: 1:1
Medium parameters used: $f = 2450$ MHz; $\sigma = 1.79$ mho/m; $\epsilon_r = 37.7$; $\rho = 1000$ kg/m³
Phantom section: Flat Section

DASY4 Configuration:

Probe: EX3DV4 - SN3643; ConvF(6.97, 6.97, 6.97); Calibrated: 2013-01-24; Electronics: DAE3 Sn519
Phantom: SAM 1800/1900 MHz; Type: SAM; Serial: TP-1224
Measurement SW: DASY4, V4.7 Build 80; Postprocessing SW: SEMCAD, V1.8 Build 186

Test Date: 2013-05-11; Ambient Temp: 22.2; Tissue Temp: 22.7

2450 MHz System Verification

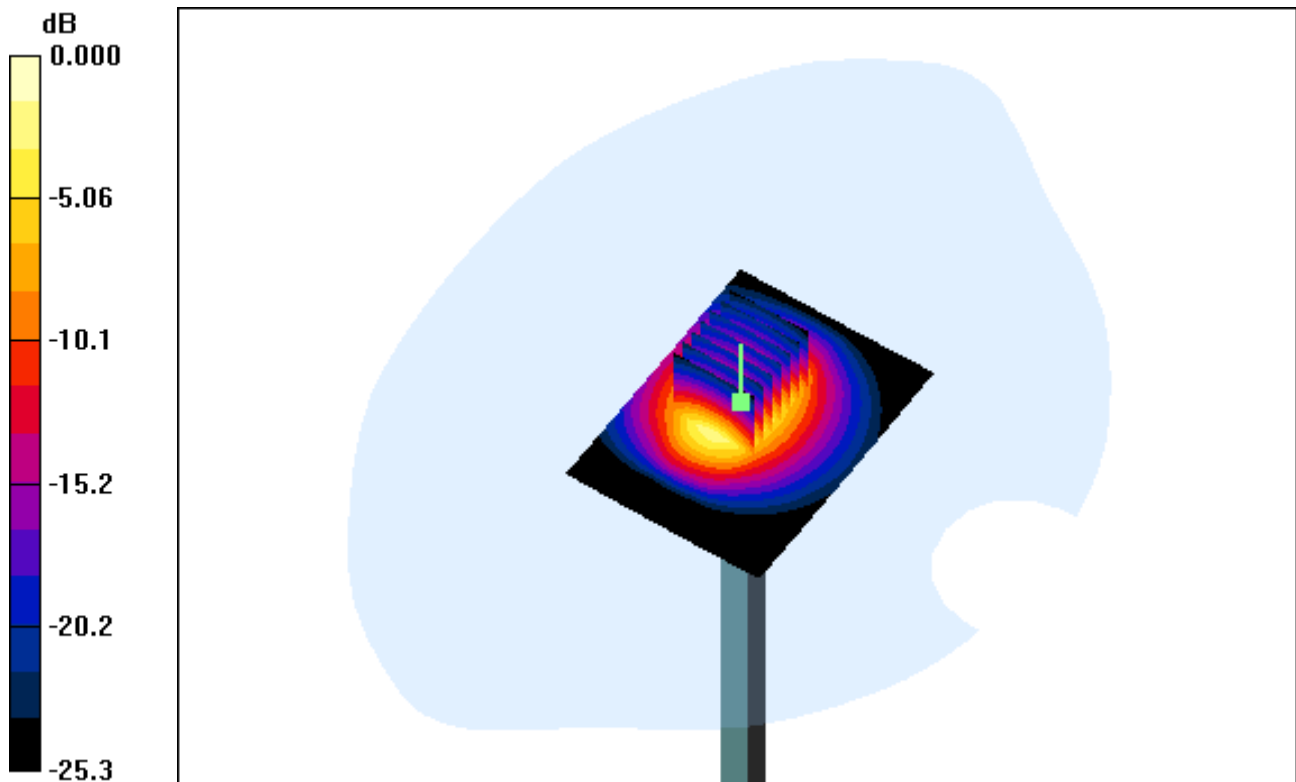
Area Scan (61x81x1): Measurement grid: dx=12mm, dy=12mm

Zoom Scan (7x7x7)/Cube 0: Measurement grid: dx=5mm, dy=5mm, dz=5mm

Power Drift = 0.073 dB

Peak SAR (extrapolated) = 29.9 W/kg

SAR(1 g) = 12.9 mW/g; SAR(10 g) = 5.71 mW/g



0 dB = 20.6mW/g

DIGITAL EMC CO., LTD

DUT: Dipole 2450 MHz; Type: D2450V2; Serial: D2450V2 - SN:726

Communication System: CW; Frequency: 2450 MHz; Duty Cycle: 1:1
Medium parameters used: $f = 2450$ MHz; $\sigma = 1.79$ mho/m; $\epsilon_r = 37.7$; $\rho = 1000$ kg/m³
Phantom section: Flat Section

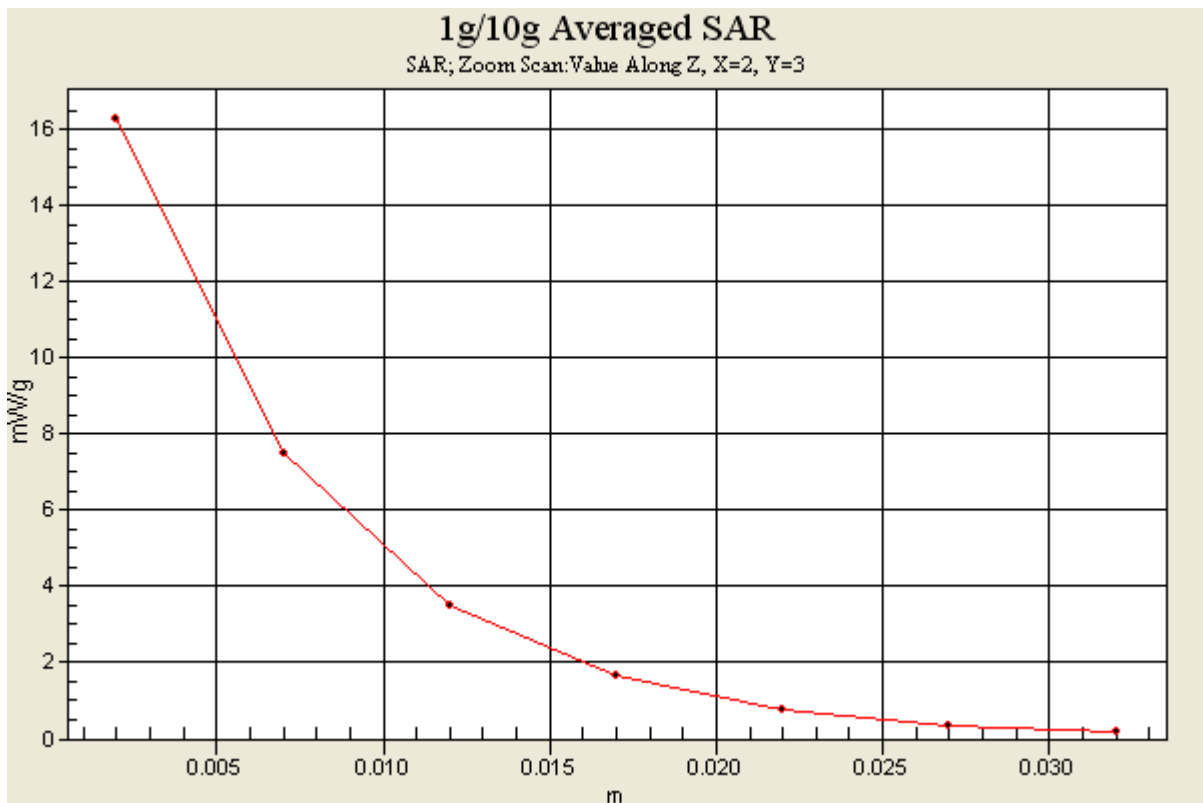
DASY4 Configuration:

Probe: EX3DV4 - SN3643; ConvF(6.97, 6.97, 6.97); Calibrated: 2013-01-24; Electronics: DAE3 Sn519
Phantom: SAM 1800/1900 MHz; Type: SAM; Serial: TP-1224
Measurement SW: DASY4, V4.7 Build 80; Postprocessing SW: SEMCAD, V1.8 Build 186

Test Date: 2013-05-11; Ambient Temp: 22.2; Tissue Temp: 22.7

2450 MHz System Verification

Area Scan (61x81x1): Measurement grid: dx=12mm, dy=12mm
Zoom Scan (7x7x7)/Cube 0: Measurement grid: dx=5mm, dy=5mm, dz=5mm
Power Drift = 0.073 dB
Peak SAR (extrapolated) = 29.9 W/kg
SAR(1 g) = 12.9 mW/g; SAR(10 g) = 5.71 mW/g



DIGITAL EMC CO., LTD

DUT: Dipole 2450 MHz; Type: D2450V2; Serial: D2450V2 - SN:726

Communication System: CW; Frequency: 2450 MHz; Duty Cycle: 1:1
Medium parameters used: $f = 2450$ MHz; $\sigma = 1.93$ mho/m; $\epsilon_r = 54$; $\rho = 1000$ kg/m³
Phantom section: Flat Section

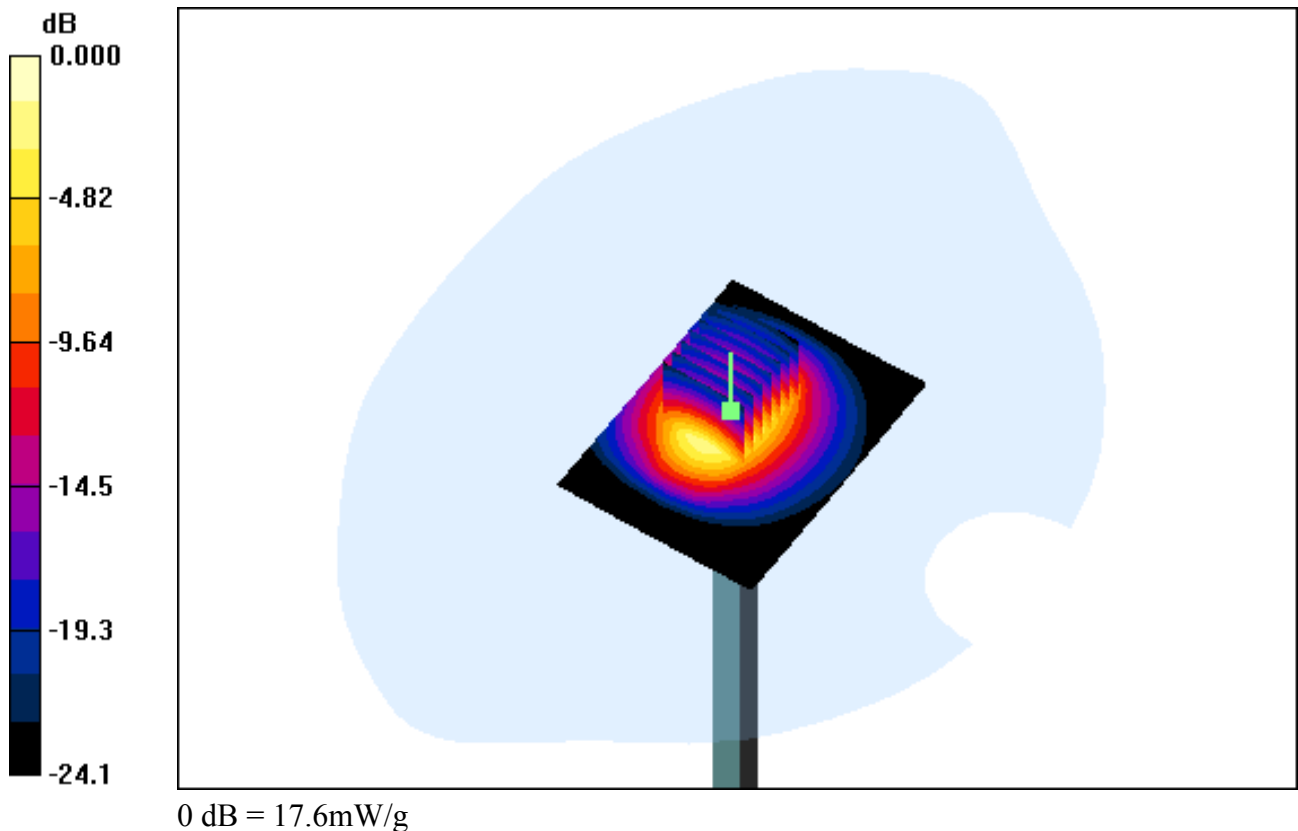
DASY4 Configuration:

Probe: EX3DV4 - SN3643; ConvF(7.07, 7.07, 7.07); Calibrated: 2013-01-24; Electronics: DAE3 Sn519
Phantom: SAM 1800/1900 MHz; Type: SAM; Serial: TP-1224
Measurement SW: DASY4, V4.7 Build 80; Postprocessing SW: SEMCAD, V1.8 Build 186

Test Date: 2013-05-11; Ambient Temp: 22.2; Tissue Temp: 22.7

2450 MHz System Verification

Area Scan (61x81x1): Measurement grid: dx=12mm, dy=12mm
Zoom Scan (7x7x7)/Cube 0: Measurement grid: dx=5mm, dy=5mm, dz=5mm
Power Drift = -0.023 dB
Peak SAR (extrapolated) = 27.2 W/kg
SAR(1 g) = 12.2 mW/g; SAR(10 g) = 5.52 mW/g



DIGITAL EMC CO., LTD

DUT: Dipole 2450 MHz; Type: D2450V2; Serial: D2450V2 - SN:726

Communication System: CW; Frequency: 2450 MHz; Duty Cycle: 1:1
Medium parameters used: $f = 2450$ MHz; $\sigma = 1.93$ mho/m; $\epsilon_r = 54$; $\rho = 1000$ kg/m³
Phantom section: Flat Section

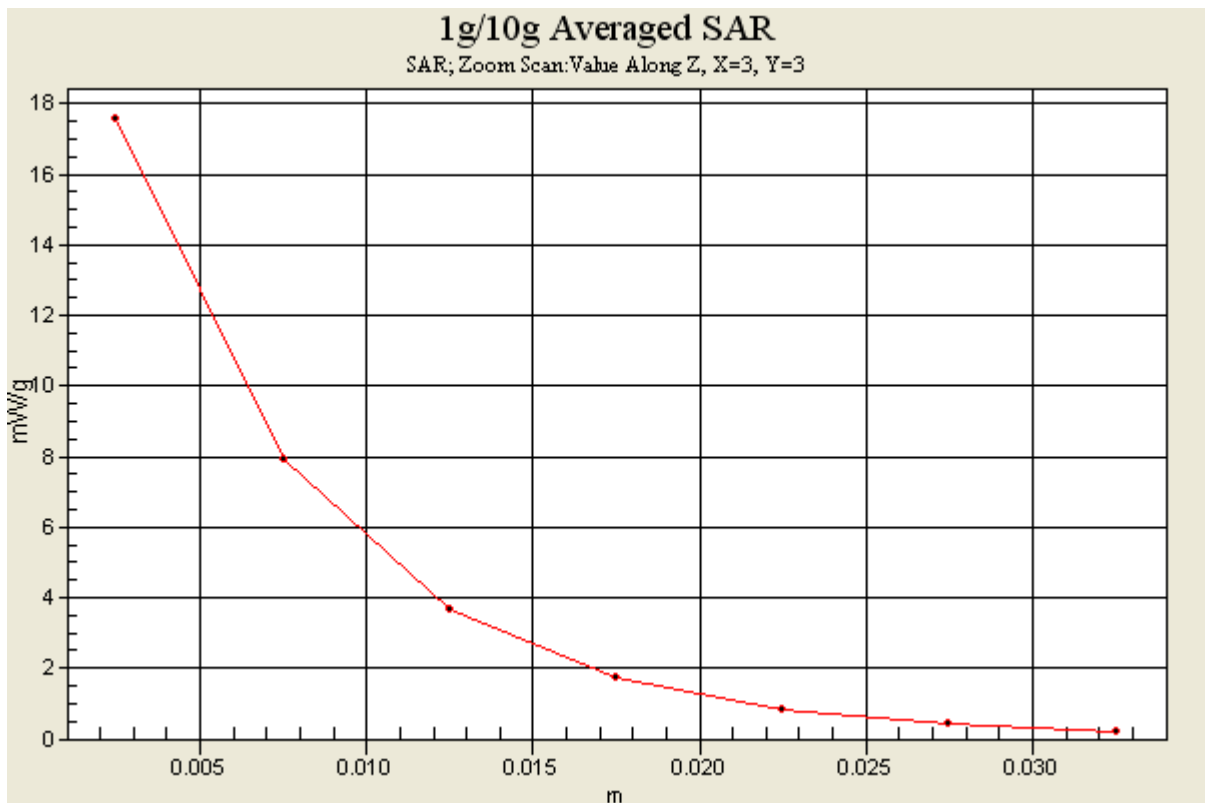
DASY4 Configuration:

Probe: EX3DV4 - SN3643; ConvF(7.07, 7.07, 7.07); Calibrated: 2013-01-24; Electronics: DAE3 Sn519
Phantom: SAM 1800/1900 MHz; Type: SAM; Serial: TP-1224
Measurement SW: DASY4, V4.7 Build 80; Postprocessing SW: SEMCAD, V1.8 Build 186

Test Date: 2013-05-11; Ambient Temp: 22.2; Tissue Temp: 22.7

2450 MHz System Verification

Area Scan (61x81x1): Measurement grid: dx=12mm, dy=12mm
Zoom Scan (7x7x7)/Cube 0: Measurement grid: dx=5mm, dy=5mm, dz=5mm
Power Drift = -0.023 dB
Peak SAR (extrapolated) = 27.2 W/kg
SAR(1 g) = 12.2 mW/g; SAR(10 g) = 5.52 mW/g



DIGITAL EMC CO., LTD

DUT: Dipole 5000 MHz; Type: D5GHzV2; Serial: D5GHzV2 - SN:1103

Communication System: CW; Frequency: 5200 MHz; Duty Cycle: 1:1

Medium parameters used: $f = 5200$ MHz; $\sigma = 4.75$ mho/m; $\epsilon_r = 36.1$; $\rho = 1000$ kg/m³

Phantom section: Flat Section

DASY4 Configuration:

Probe: EX3DV4 - SN3643; ConvF(4.87, 4.87, 4.87); Calibrated: 2013-01-24; Electronics: DAE3 Sn519

Phantom: SAM 1800/1900 MHz; Type: SAM; Serial: TP-1224

Measurement SW: DASY4, V4.7 Build 80; Postprocessing SW: SEMCAD, V1.8 Build 186

Test Date: 2013-05-12; Ambient Temp: 21.8; Tissue Temp: 22.3

5200 MHz System Verification

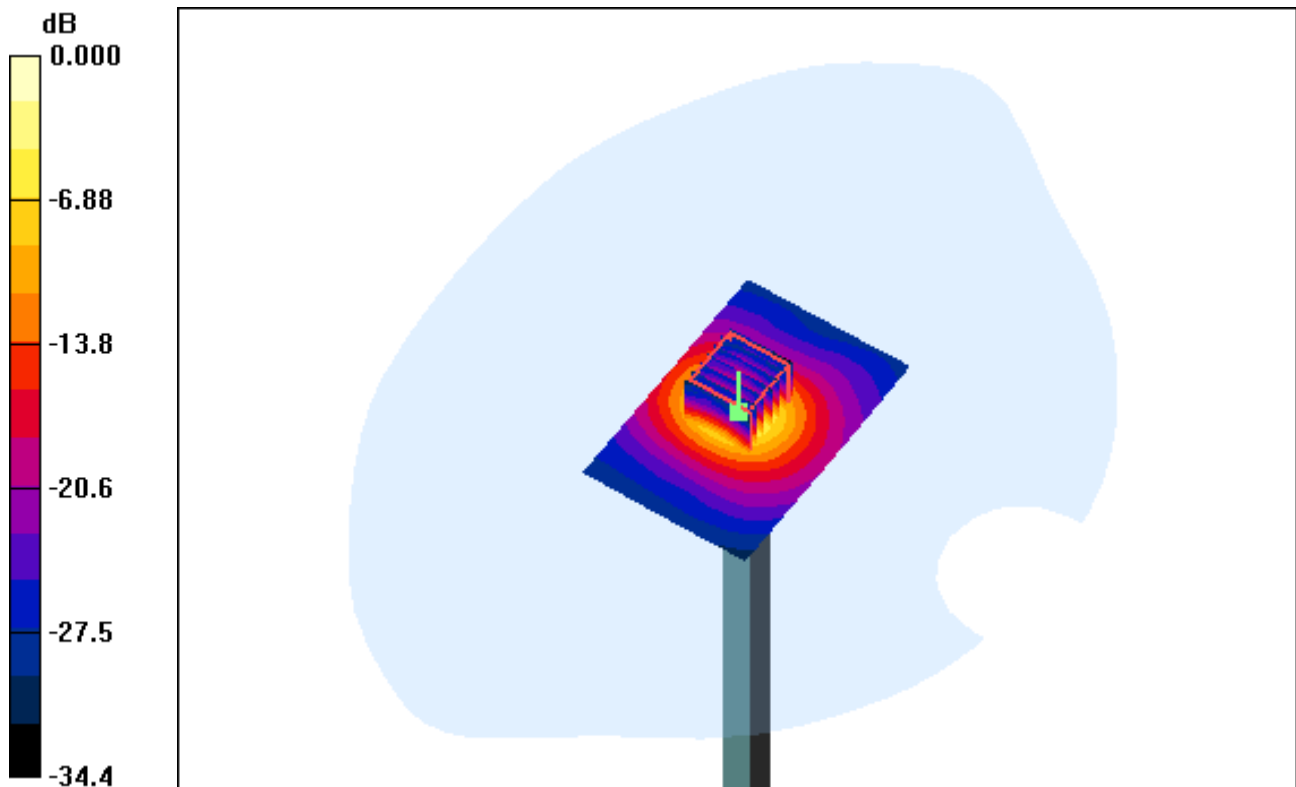
Area Scan (61x91x1): Measurement grid: dx=10mm, dy=10mm

Zoom Scan (7x7x11)/Cube 0: Measurement grid: dx=4mm, dy=4mm, dz=2mm

Power Drift = 0.095 dB

Peak SAR (extrapolated) = 34.5 W/kg

SAR(1 g) = 8.02 mW/g; SAR(10 g) = 2.26 mW/g



0 dB = 16.9mW/g

DIGITAL EMC CO., LTD

DUT: Dipole 5000 MHz; Type: D5GHzV2; Serial: D5GHzV2 - SN:1103

Communication System: CW; Frequency: 5200 MHz; Duty Cycle: 1:1

Medium parameters used: $f = 5200$ MHz; $\sigma = 4.75$ mho/m; $\epsilon_r = 36.1$; $\rho = 1000$ kg/m³

Phantom section: Flat Section

DASY4 Configuration:

Probe: EX3DV4 - SN3643; ConvF(4.87, 4.87, 4.87); Calibrated: 2013-01-24; Electronics: DAE3 Sn519

Phantom: SAM 1800/1900 MHz; Type: SAM; Serial: TP-1224

Measurement SW: DASY4, V4.7 Build 80; Postprocessing SW: SEMCAD, V1.8 Build 186

Test Date: 2013-05-12; Ambient Temp: 21.8; Tissue Temp: 22.3

5200 MHz System Verification

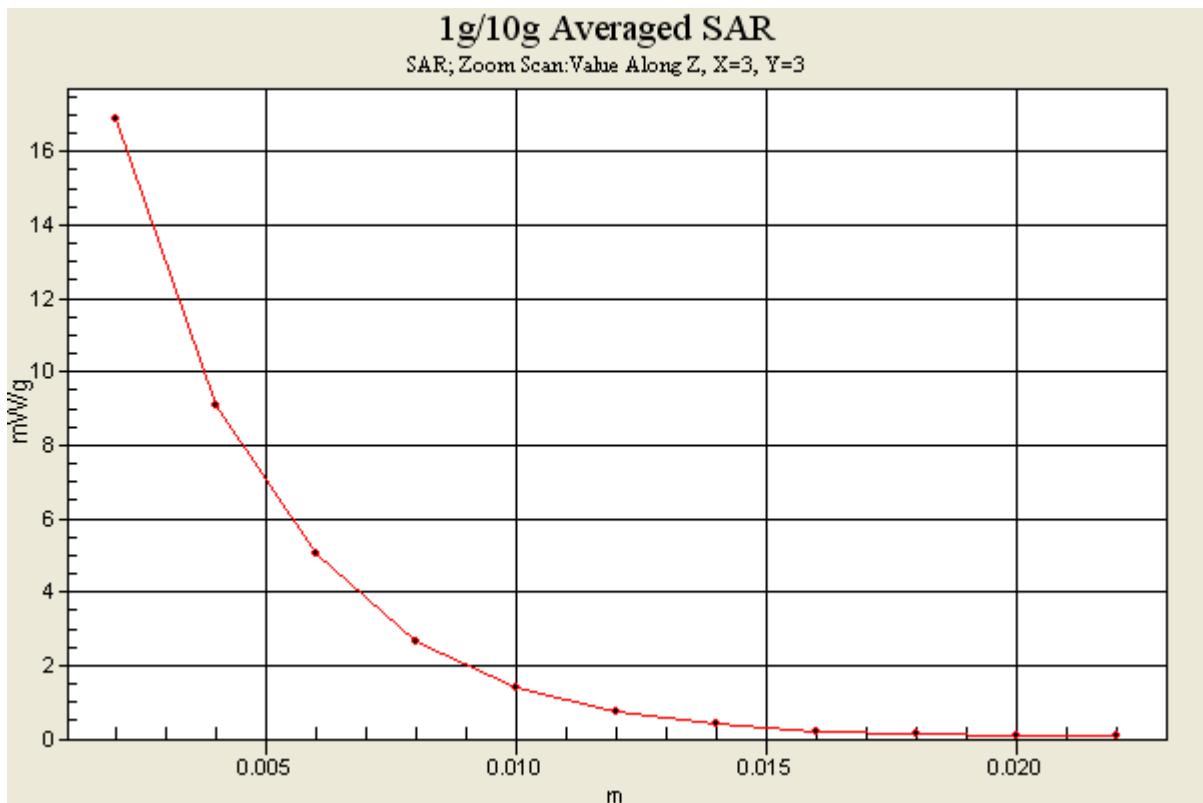
Area Scan (61x91x1): Measurement grid: dx=10mm, dy=10mm

Zoom Scan (7x7x11)/Cube 0: Measurement grid: dx=4mm, dy=4mm, dz=2mm

Power Drift = 0.095 dB

Peak SAR (extrapolated) = 34.5 W/kg

SAR(1 g) = 8.02 mW/g; SAR(10 g) = 2.26 mW/g



DIGITAL EMC CO., LTD

DUT: Dipole 5000 MHz; Type: D5GHzV2; Serial: D5GHzV2 - SN:1103

Communication System: CW; Frequency: 5300 MHz; Duty Cycle: 1:1

Medium parameters used: $f = 5300$ MHz; $\sigma = 4.87$ mho/m; $\epsilon_r = 35.9$; $\rho = 1000$ kg/m³

Phantom section: Flat Section

DASY4 Configuration:

Probe: EX3DV4 - SN3643; ConvF(4.6, 4.6, 4.6); Calibrated: 2013-01-24; Electronics: DAE3 Sn519

Phantom: SAM 1800/1900 MHz; Type: SAM; Serial: TP-1224

Measurement SW: DASY4, V4.7 Build 80; Postprocessing SW: SEMCAD, V1.8 Build 186

Test Date: 2013-05-12; Ambient Temp: 21.8; Tissue Temp: 22.3

5300 MHz System Verification

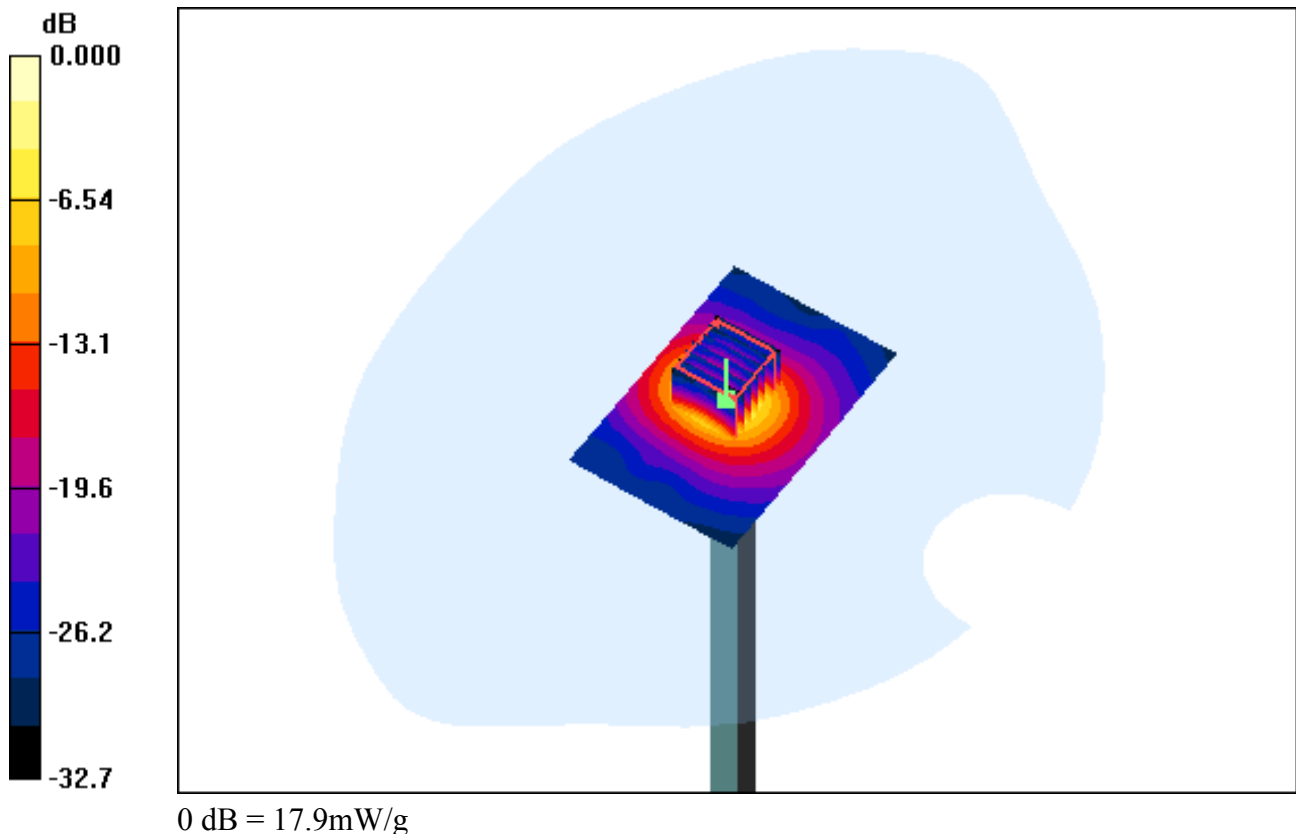
Area Scan (61x91x1): Measurement grid: dx=10mm, dy=10mm

Zoom Scan (7x7x11)/Cube 0: Measurement grid: dx=4mm, dy=4mm, dz=2mm

Power Drift = 0.126 dB

Peak SAR (extrapolated) = 37.1 W/kg

SAR(1 g) = 8.51 mW/g; SAR(10 g) = 2.39 mW/g



DIGITAL EMC CO., LTD

DUT: Dipole 5000 MHz; Type: D5GHzV2; Serial: D5GHzV2 - SN:1103

Communication System: CW; Frequency: 5300 MHz; Duty Cycle: 1:1

Medium parameters used: $f = 5300$ MHz; $\sigma = 4.87$ mho/m; $\epsilon_r = 35.9$; $\rho = 1000$ kg/m³

Phantom section: Flat Section

DASY4 Configuration:

Probe: EX3DV4 - SN3643; ConvF(4.6, 4.6, 4.6); Calibrated: 2013-01-24; Electronics: DAE3 Sn519

Phantom: SAM 1800/1900 MHz; Type: SAM; Serial: TP-1224

Measurement SW: DASY4, V4.7 Build 80; Postprocessing SW: SEMCAD, V1.8 Build 186

Test Date: 2013-05-12; Ambient Temp: 21.8; Tissue Temp: 22.3

5300 MHz System Verification

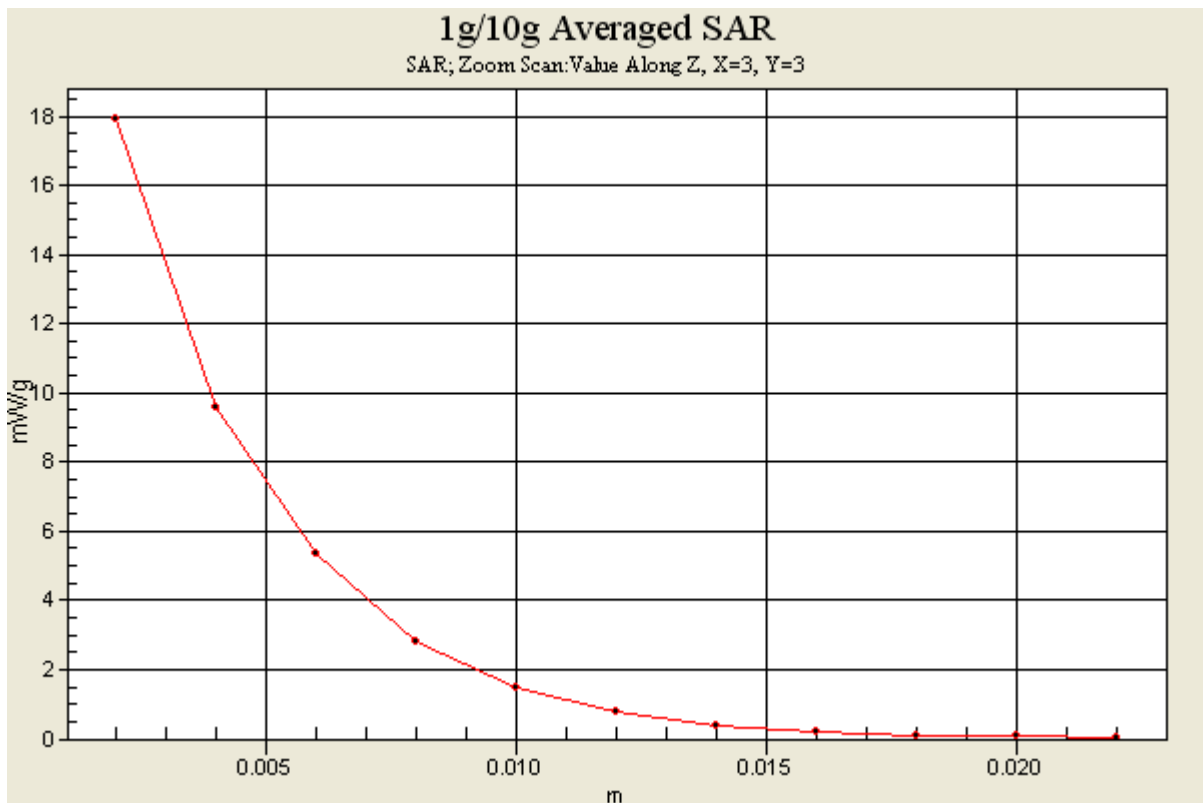
Area Scan (61x91x1): Measurement grid: dx=10mm, dy=10mm

Zoom Scan (7x7x11)/Cube 0: Measurement grid: dx=4mm, dy=4mm, dz=2mm

Power Drift = 0.126 dB

Peak SAR (extrapolated) = 37.1 W/kg

SAR(1 g) = 8.51 mW/g; SAR(10 g) = 2.39 mW/g



DIGITAL EMC CO., LTD

DUT: Dipole 5000 MHz; Type: D5GHzV2; Serial: D5GHzV2 - SN:1103

Communication System: CW; Frequency: 5500 MHz; Duty Cycle: 1:1

Medium parameters used: $f = 5500$ MHz; $\sigma = 5.11$ mho/m; $\epsilon_r = 35.6$; $\rho = 1000$ kg/m³

Phantom section: Flat Section

DASY4 Configuration:

Probe: EX3DV4 - SN3643; ConvF(4.47, 4.47, 4.47); Calibrated: 2013-01-24; Electronics: DAE3 Sn519

Phantom: SAM 1800/1900 MHz; Type: SAM; Serial: TP-1224

Measurement SW: DASY4, V4.7 Build 80; Postprocessing SW: SEMCAD, V1.8 Build 186

Test Date: 2013-05-12; Ambient Temp: 21.8; Tissue Temp: 22.3

5500 MHz System Verification

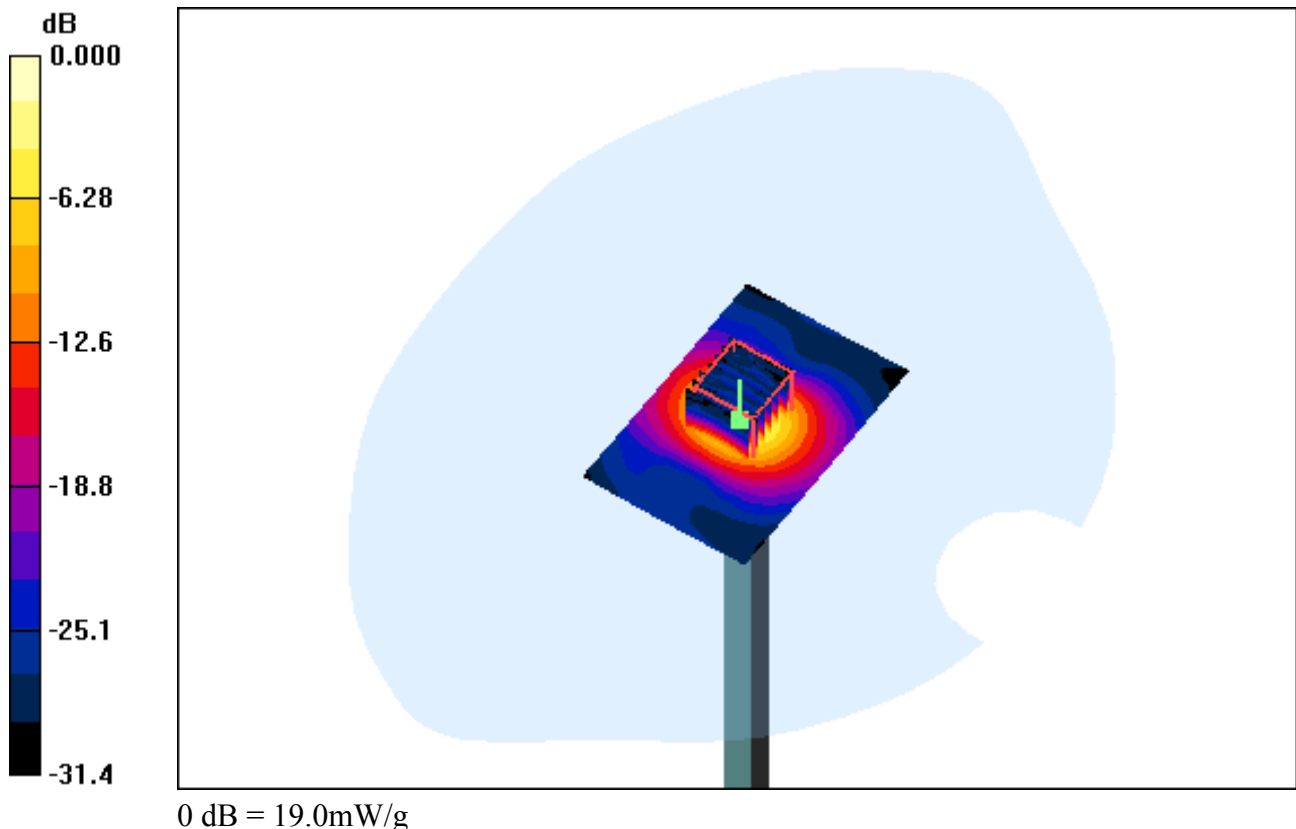
Area Scan (61x91x1): Measurement grid: dx=10mm, dy=10mm

Zoom Scan (7x7x11)/Cube 0: Measurement grid: dx=4mm, dy=4mm, dz=2mm

Power Drift = 0.018 dB

Peak SAR (extrapolated) = 43.9 W/kg

SAR(1 g) = 8.84 mW/g; SAR(10 g) = 2.53 mW/g



DIGITAL EMC CO., LTD

DUT: Dipole 5000 MHz; Type: D5GHzV2; Serial: D5GHzV2 - SN:1103

Communication System: CW; Frequency: 5500 MHz; Duty Cycle: 1:1

Medium parameters used: $f = 5500$ MHz; $\sigma = 5.11$ mho/m; $\epsilon_r = 35.6$; $\rho = 1000$ kg/m³

Phantom section: Flat Section

DASY4 Configuration:

Probe: EX3DV4 - SN3643; ConvF(4.47, 4.47, 4.47); Calibrated: 2013-01-24; Electronics: DAE3 Sn519

Phantom: SAM 1800/1900 MHz; Type: SAM; Serial: TP-1224

Measurement SW: DASY4, V4.7 Build 80; Postprocessing SW: SEMCAD, V1.8 Build 186

Test Date: 2013-05-12; Ambient Temp: 21.8; Tissue Temp: 22.3

5500 MHz System Verification

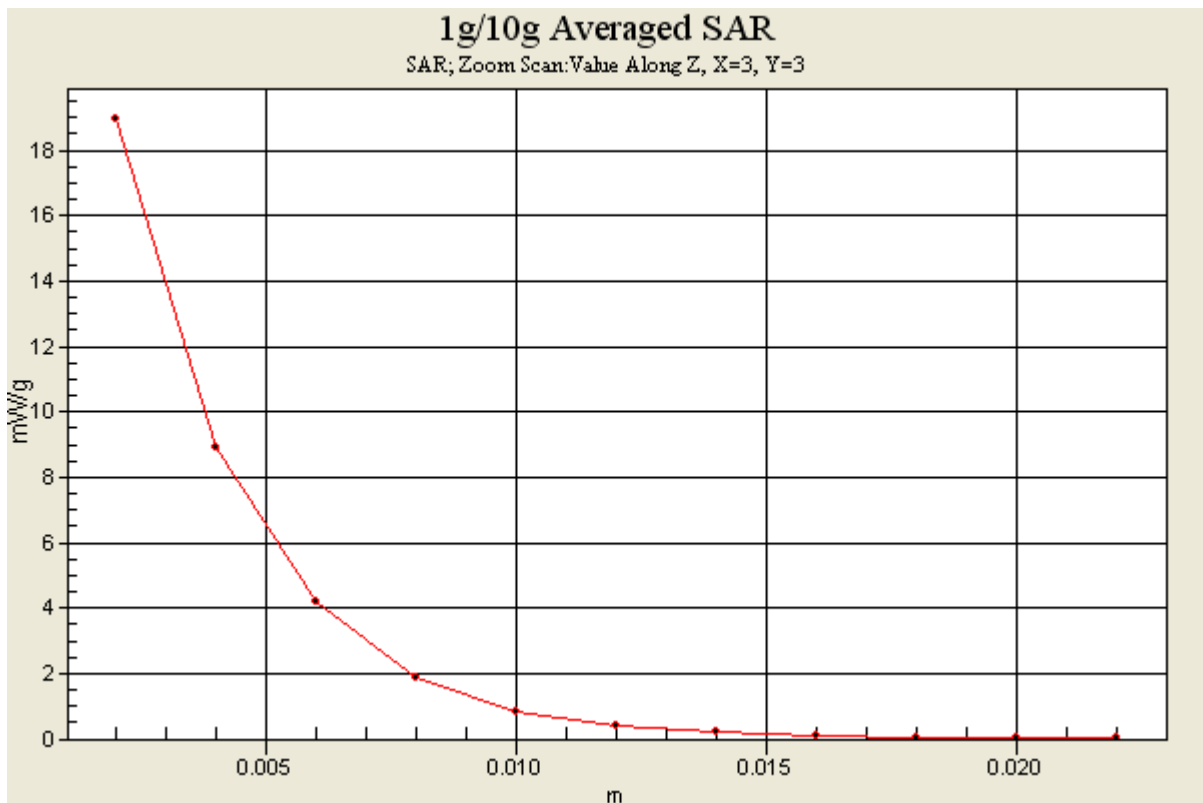
Area Scan (61x91x1): Measurement grid: dx=10mm, dy=10mm

Zoom Scan (7x7x11)/Cube 0: Measurement grid: dx=4mm, dy=4mm, dz=2mm

Power Drift = 0.018 dB

Peak SAR (extrapolated) = 43.9 W/kg

SAR(1 g) = 8.84 mW/g; SAR(10 g) = 2.53 mW/g



DIGITAL EMC CO., LTD

DUT: Dipole 5000 MHz; Type: D5GHzV2; Serial: D5GHzV2 - SN:1103

Communication System: CW; Frequency: 5600 MHz; Duty Cycle: 1:1

Medium parameters used: $f = 5600$ MHz; $\sigma = 5.22$ mho/m; $\epsilon_r = 35.4$; $\rho = 1000$ kg/m³

Phantom section: Flat Section

DASY4 Configuration:

Probe: EX3DV4 - SN3643; ConvF(4.39, 4.39, 4.39); Calibrated: 2013-01-24; Electronics: DAE3 Sn519

Phantom: SAM 1800/1900 MHz; Type: SAM; Serial: TP-1224

Measurement SW: DASY4, V4.7 Build 80; Postprocessing SW: SEMCAD, V1.8 Build 186

Test Date: 2013-05-12; Ambient Temp: 21.8; Tissue Temp: 22.3

5600 MHz System Verification

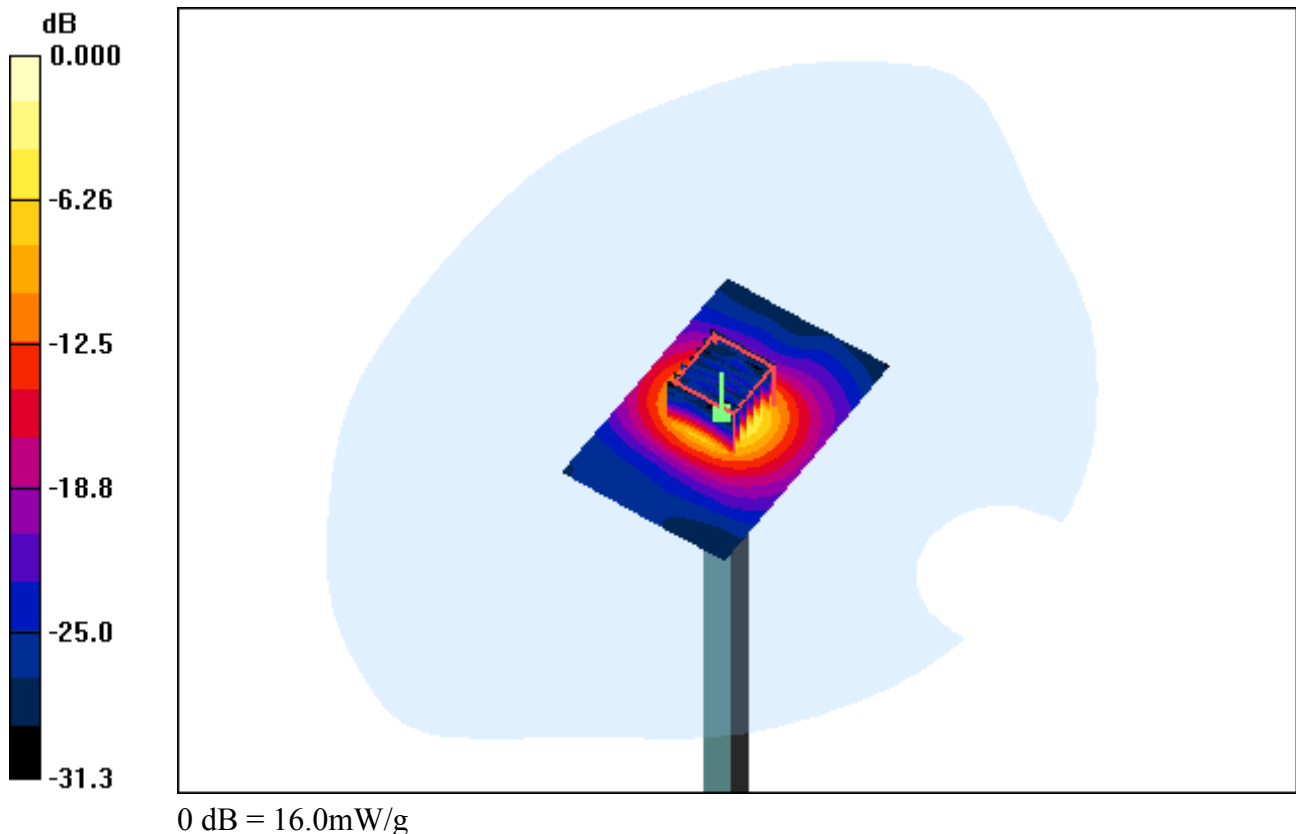
Area Scan (61x91x1): Measurement grid: dx=10mm, dy=10mm

Zoom Scan (7x7x11)/Cube 0: Measurement grid: dx=4mm, dy=4mm, dz=2mm

Power Drift = 0.037 dB

Peak SAR (extrapolated) = 35.9 W/kg

SAR(1 g) = 7.89 mW/g; SAR(10 g) = 2.29 mW/g



DIGITAL EMC CO., LTD

DUT: Dipole 5000 MHz; Type: D5GHzV2; Serial: D5GHzV2 - SN:1103

Communication System: CW; Frequency: 5600 MHz; Duty Cycle: 1:1

Medium parameters used: $f = 5600$ MHz; $\sigma = 5.22$ mho/m; $\epsilon_r = 35.4$; $\rho = 1000$ kg/m³

Phantom section: Flat Section

DASY4 Configuration:

Probe: EX3DV4 - SN3643; ConvF(4.39, 4.39, 4.39); Calibrated: 2013-01-24; Electronics: DAE3 Sn519

Phantom: SAM 1800/1900 MHz; Type: SAM; Serial: TP-1224

Measurement SW: DASY4, V4.7 Build 80; Postprocessing SW: SEMCAD, V1.8 Build 186

Test Date: 2013-05-12; Ambient Temp: 21.8; Tissue Temp: 22.3

5600 MHz System Verification

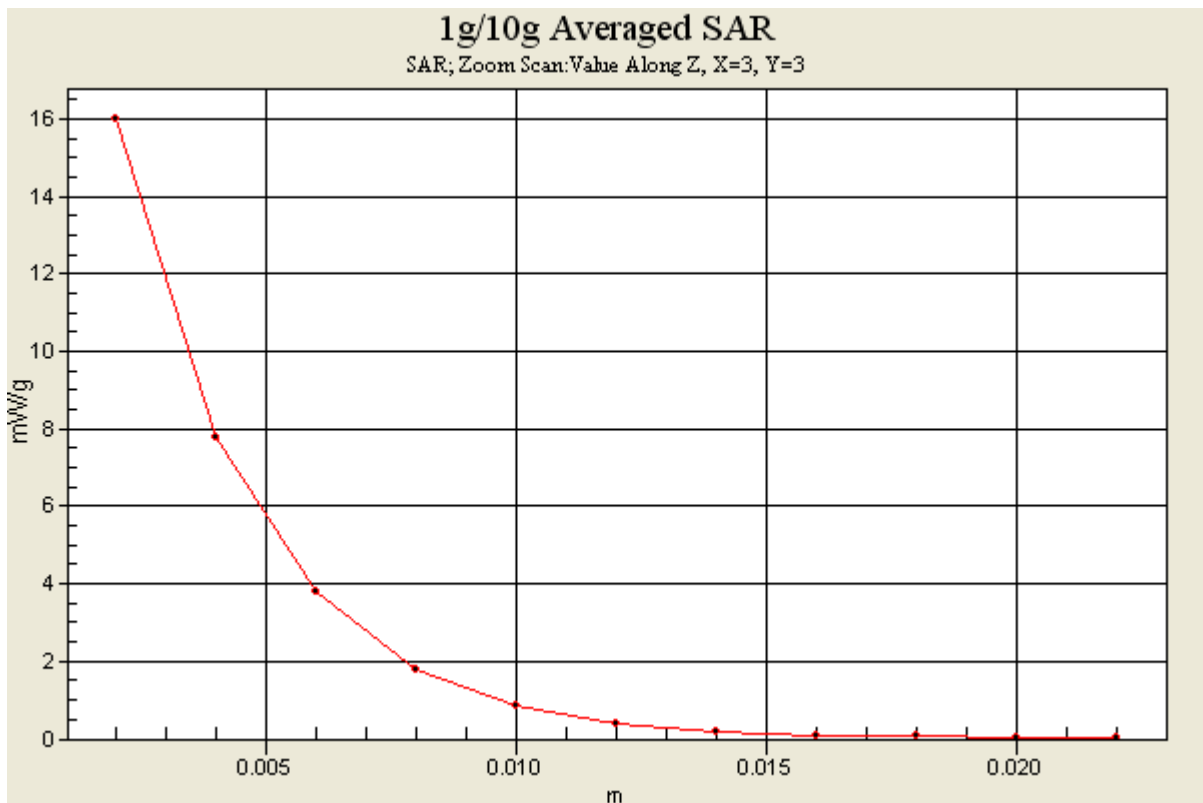
Area Scan (61x91x1): Measurement grid: dx=10mm, dy=10mm

Zoom Scan (7x7x11)/Cube 0: Measurement grid: dx=4mm, dy=4mm, dz=2mm

Power Drift = 0.037 dB

Peak SAR (extrapolated) = 35.9 W/kg

SAR(1 g) = 7.89 mW/g; SAR(10 g) = 2.29 mW/g



DIGITAL EMC CO., LTD

DUT: Dipole 5000 MHz; Type: D5GHzV2; Serial: D5GHzV2 - SN:1103

Communication System: CW; Frequency: 5800 MHz; Duty Cycle: 1:1

Medium parameters used: $f = 5800$ MHz; $\sigma = 5.46$ mho/m; $\epsilon_r = 35$; $\rho = 1000$ kg/m³

Phantom section: Flat Section

DASY4 Configuration:

Probe: EX3DV4 - SN3643; ConvF(4.18, 4.18, 4.18); Calibrated: 2013-01-24; Electronics: DAE3 Sn519

Phantom: SAM 1800/1900 MHz; Type: SAM; Serial: TP-1224

Measurement SW: DASY4, V4.7 Build 80; Postprocessing SW: SEMCAD, V1.8 Build 186

Test Date: 2013-05-12; Ambient Temp: 21.8; Tissue Temp: 22.3

5800 MHz System Verification

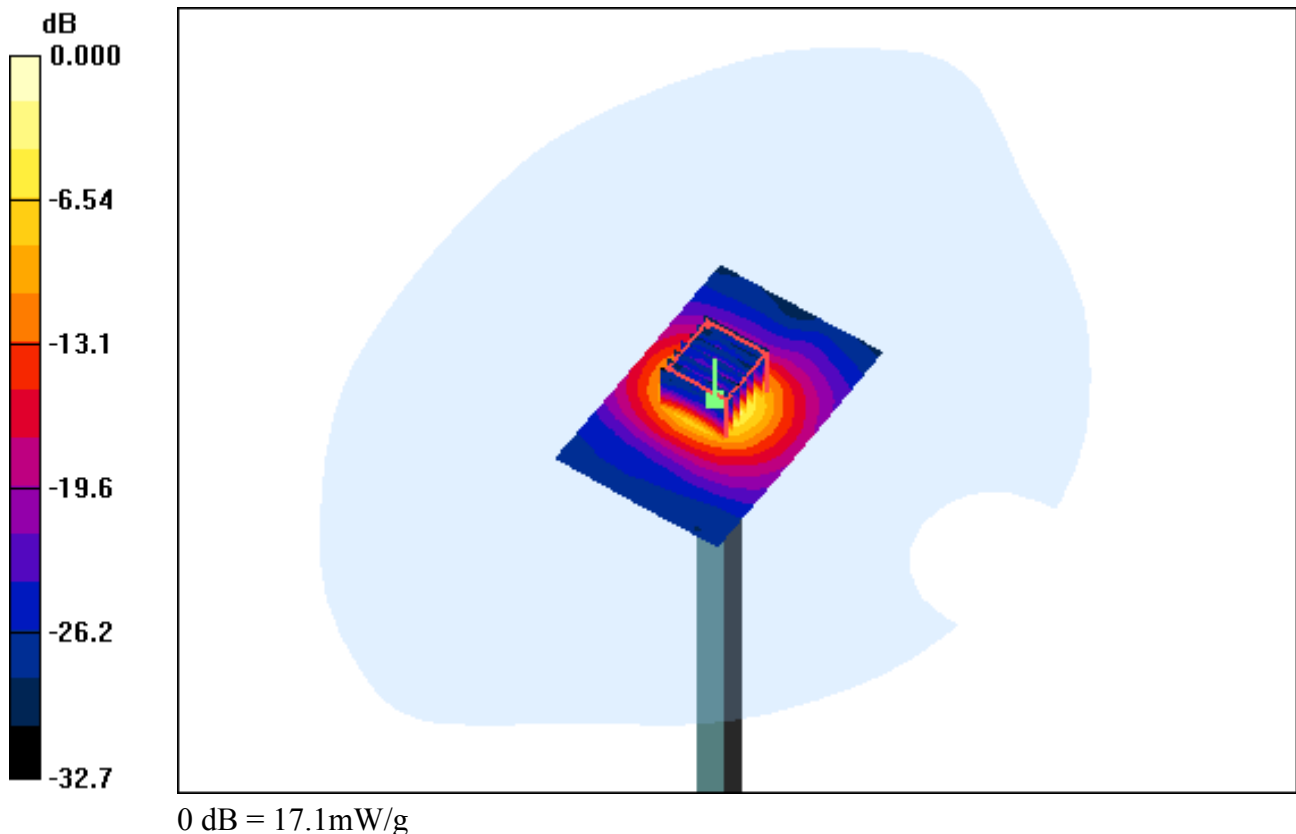
Area Scan (61x91x1): Measurement grid: dx=10mm, dy=10mm

Zoom Scan (7x7x11)/Cube 0: Measurement grid: dx=4mm, dy=4mm, dz=2mm

Power Drift = 0.053 dB

Peak SAR (extrapolated) = 36.2 W/kg

SAR(1 g) = 7.96 mW/g; SAR(10 g) = 2.29 mW/g



DIGITAL EMC CO., LTD

DUT: Dipole 5000 MHz; Type: D5GHzV2; Serial: D5GHzV2 - SN:1103

Communication System: CW; Frequency: 5800 MHz; Duty Cycle: 1:1

Medium parameters used: $f = 5800$ MHz; $\sigma = 5.46$ mho/m; $\epsilon_r = 35$; $\rho = 1000$ kg/m³

Phantom section: Flat Section

DASY4 Configuration:

Probe: EX3DV4 - SN3643; ConvF(4.18, 4.18, 4.18); Calibrated: 2013-01-24; Electronics: DAE3 Sn519

Phantom: SAM 1800/1900 MHz; Type: SAM; Serial: TP-1224

Measurement SW: DASY4, V4.7 Build 80; Postprocessing SW: SEMCAD, V1.8 Build 186

Test Date: 2013-05-12; Ambient Temp: 21.8; Tissue Temp: 22.3

5800 MHz System Verification

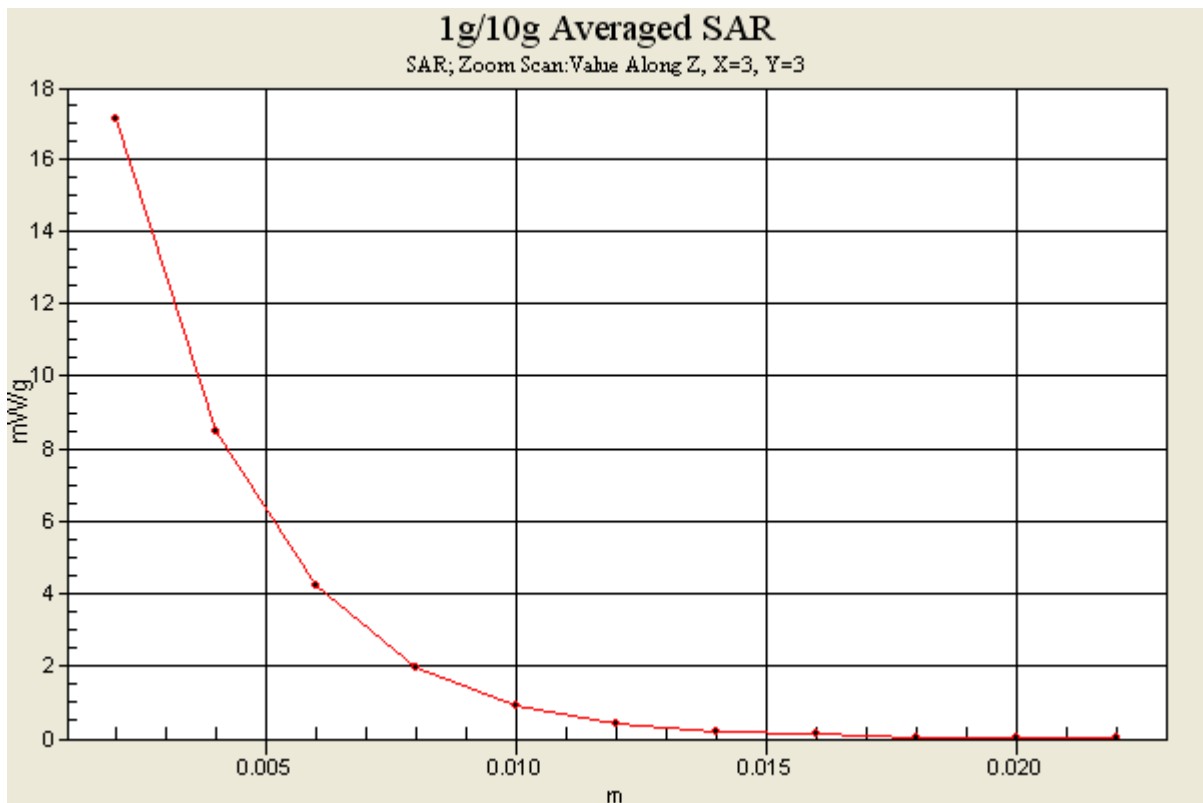
Area Scan (61x91x1): Measurement grid: dx=10mm, dy=10mm

Zoom Scan (7x7x11)/Cube 0: Measurement grid: dx=4mm, dy=4mm, dz=2mm

Power Drift = 0.053 dB

Peak SAR (extrapolated) = 36.2 W/kg

SAR(1 g) = 7.96 mW/g; SAR(10 g) = 2.29 mW/g



DIGITAL EMC CO., LTD

DUT: Dipole 5000 MHz; Type: D5GHzV2; Serial: D5GHzV2 - SN:1103

Communication System: CW; Frequency: 5200 MHz; Duty Cycle: 1:1

Medium parameters used: $f = 5200$ MHz; $\sigma = 5.24$ mho/m; $\epsilon_r = 47.7$; $\rho = 1000$ kg/m³

Phantom section: Flat Section

DASY4 Configuration:

Probe: EX3DV4 - SN3643; ConvF(4.27, 4.27, 4.27); Calibrated: 2013-01-24; Electronics: DAE3 Sn519

Phantom: SAM 1800/1900 MHz; Type: SAM; Serial: TP-1224

Measurement SW: DASY4, V4.7 Build 80; Postprocessing SW: SEMCAD, V1.8 Build 186

Test Date: 2013-05-13; Ambient Temp: 22.1; Tissue Temp: 22.6

5200 MHz System Verification

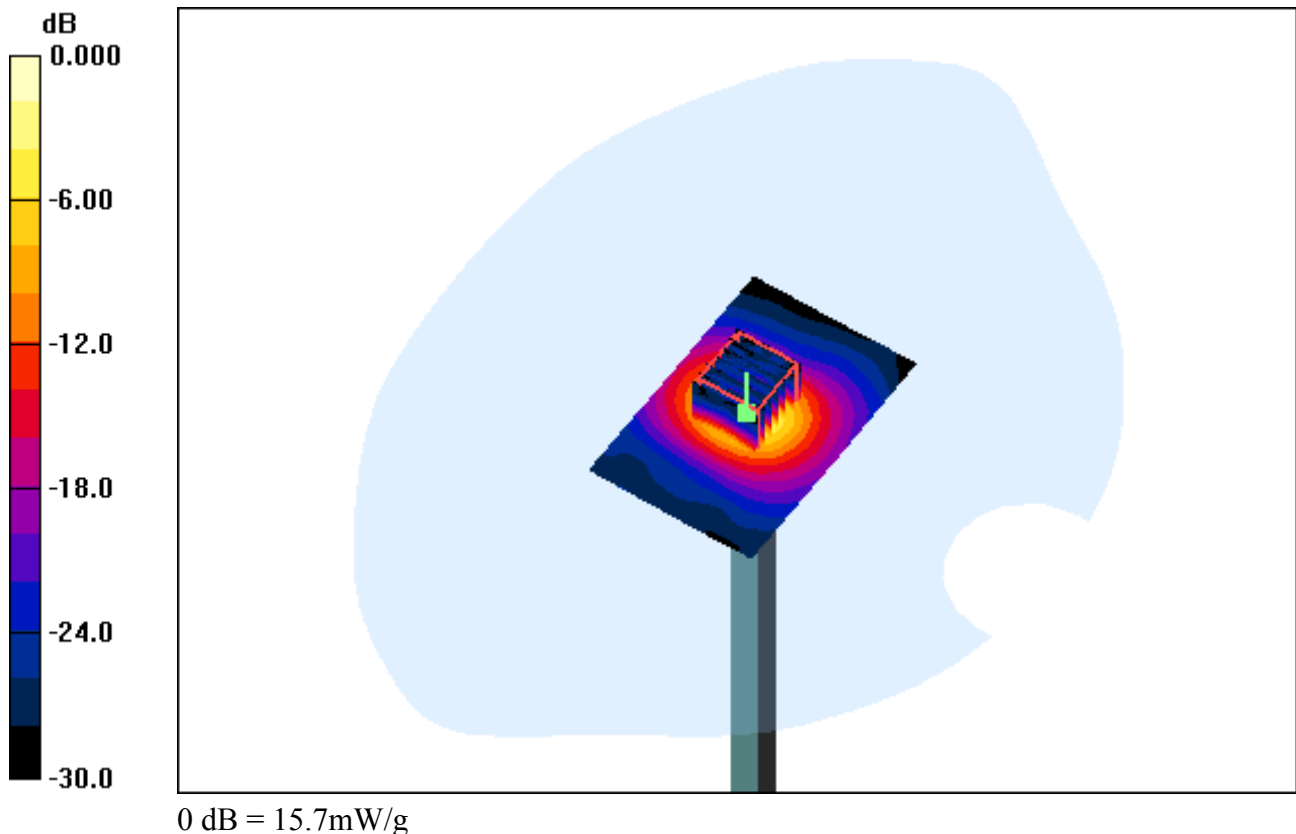
Area Scan (61x91x1): Measurement grid: dx=10mm, dy=10mm

Zoom Scan (7x7x11)/Cube 0: Measurement grid: dx=4mm, dy=4mm, dz=2mm

Power Drift = 0.067 dB

Peak SAR (extrapolated) = 33.2 W/kg

SAR(1 g) = 7.35 mW/g; SAR(10 g) = 2.11 mW/g



DIGITAL EMC CO., LTD

DUT: Dipole 5000 MHz; Type: D5GHzV2; Serial: D5GHzV2 - SN:1103

Communication System: CW; Frequency: 5200 MHz; Duty Cycle: 1:1

Medium parameters used: $f = 5200$ MHz; $\sigma = 5.24$ mho/m; $\epsilon_r = 47.7$; $\rho = 1000$ kg/m³

Phantom section: Flat Section

DASY4 Configuration:

Probe: EX3DV4 - SN3643; ConvF(4.27, 4.27, 4.27); Calibrated: 2013-01-24; Electronics: DAE3 Sn519

Phantom: SAM 1800/1900 MHz; Type: SAM; Serial: TP-1224

Measurement SW: DASY4, V4.7 Build 80; Postprocessing SW: SEMCAD, V1.8 Build 186

Test Date: 2013-05-13; Ambient Temp: 22.1; Tissue Temp: 22.6

5200 MHz System Verification

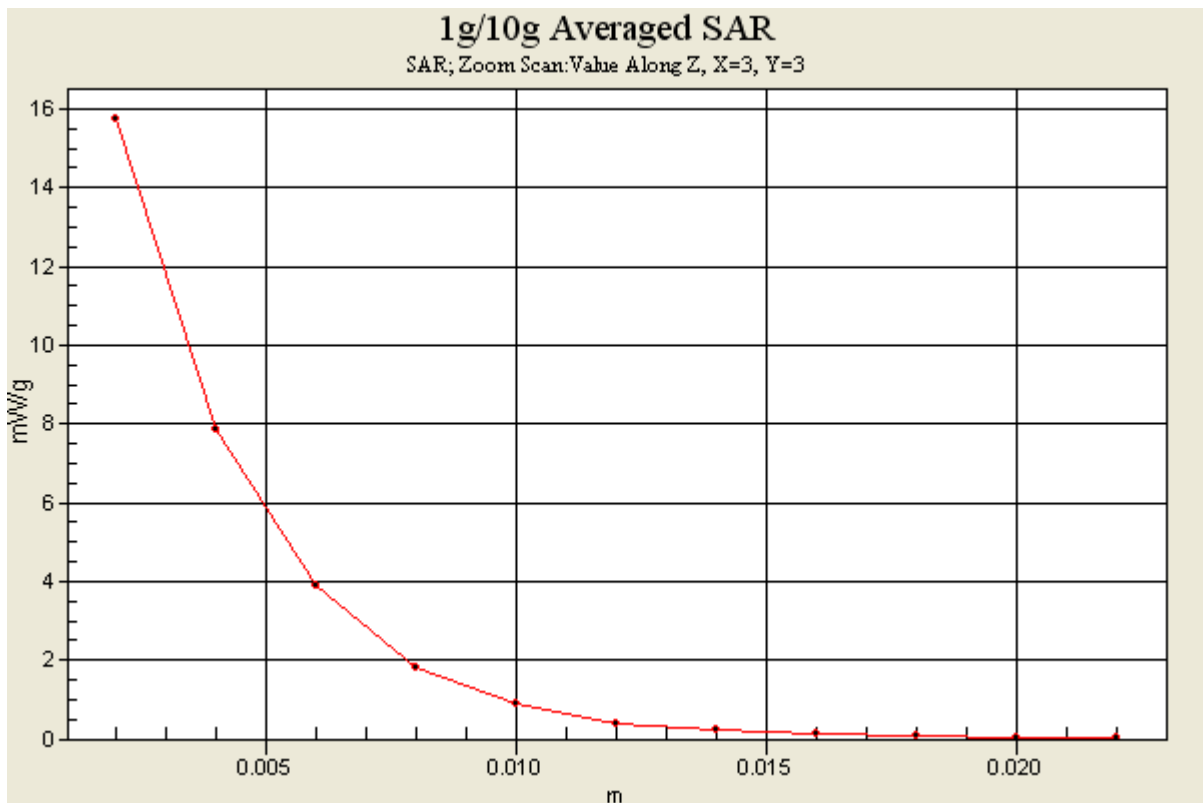
Area Scan (61x91x1): Measurement grid: dx=10mm, dy=10mm

Zoom Scan (7x7x11)/Cube 0: Measurement grid: dx=4mm, dy=4mm, dz=2mm

Power Drift = 0.067 dB

Peak SAR (extrapolated) = 33.2 W/kg

SAR(1 g) = 7.35 mW/g; SAR(10 g) = 2.11 mW/g



DIGITAL EMC CO., LTD

DUT: Dipole 5000 MHz; Type: D5GHzV2; Serial: D5GHzV2 - SN:1103

Communication System: CW; Frequency: 5300 MHz; Duty Cycle: 1:1

Medium parameters used: $f = 5300$ MHz; $\sigma = 5.38$ mho/m; $\epsilon_r = 47.5$; $\rho = 1000$ kg/m³

Phantom section: Flat Section

DASY4 Configuration:

Probe: EX3DV4 - SN3643; ConvF(4.08, 4.08, 4.08); Calibrated: 2013-01-24; Electronics: DAE3 Sn519

Phantom: SAM 1800/1900 MHz; Type: SAM; Serial: TP-1224

Measurement SW: DASY4, V4.7 Build 80; Postprocessing SW: SEMCAD, V1.8 Build 186

Test Date: 2013-05-13; Ambient Temp: 22.1; Tissue Temp: 22.6

5300 MHz System Verification

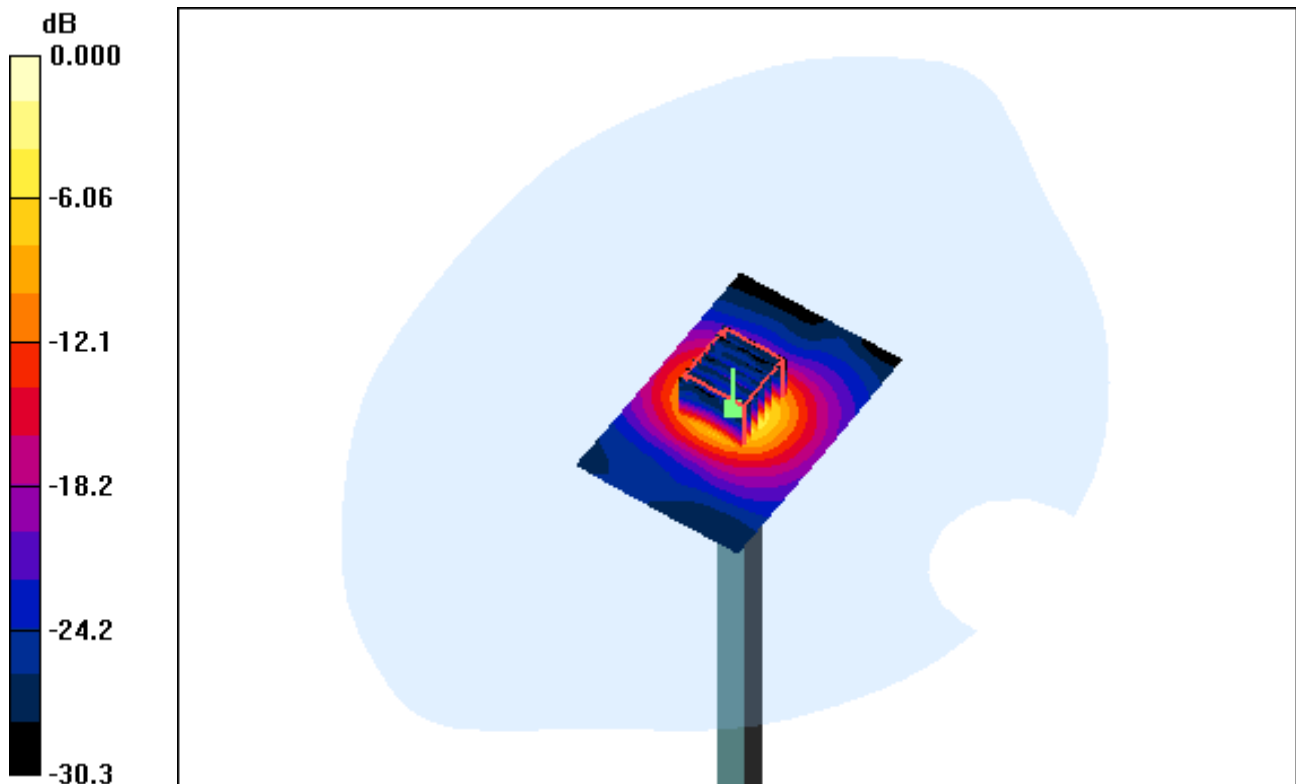
Area Scan (61x91x1): Measurement grid: dx=10mm, dy=10mm

Zoom Scan (7x7x11)/Cube 0: Measurement grid: dx=4mm, dy=4mm, dz=2mm

Power Drift = 0.010 dB

Peak SAR (extrapolated) = 35.2 W/kg

SAR(1 g) = 7.78 mW/g; SAR(10 g) = 2.24 mW/g



0 dB = 16.8mW/g

DIGITAL EMC CO., LTD

DUT: Dipole 5000 MHz; Type: D5GHzV2; Serial: D5GHzV2 - SN:1103

Communication System: CW; Frequency: 5300 MHz; Duty Cycle: 1:1

Medium parameters used: $f = 5300$ MHz; $\sigma = 5.38$ mho/m; $\epsilon_r = 47.5$; $\rho = 1000$ kg/m³

Phantom section: Flat Section

DASY4 Configuration:

Probe: EX3DV4 - SN3643; ConvF(4.08, 4.08, 4.08); Calibrated: 2013-01-24; Electronics: DAE3 Sn519

Phantom: SAM 1800/1900 MHz; Type: SAM; Serial: TP-1224

Measurement SW: DASY4, V4.7 Build 80; Postprocessing SW: SEMCAD, V1.8 Build 186

Test Date: 2013-05-13; Ambient Temp: 22.1; Tissue Temp: 22.6

5300 MHz System Verification

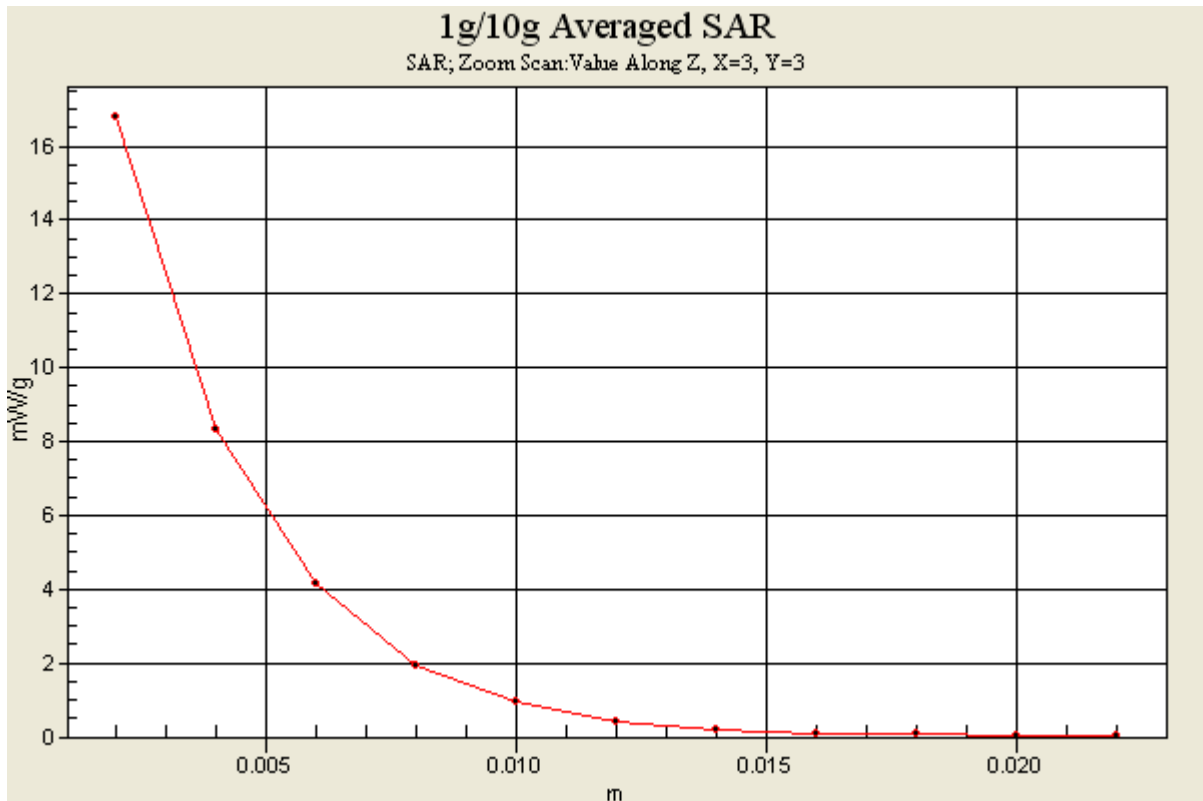
Area Scan (61x91x1): Measurement grid: dx=10mm, dy=10mm

Zoom Scan (7x7x11)/Cube 0: Measurement grid: dx=4mm, dy=4mm, dz=2mm

Power Drift = 0.010 dB

Peak SAR (extrapolated) = 35.2 W/kg

SAR(1 g) = 7.78 mW/g; SAR(10 g) = 2.24 mW/g



DIGITAL EMC CO., LTD

DUT: Dipole 5000 MHz; Type: D5GHzV2; Serial: D5GHzV2 - SN:1103

Communication System: CW; Frequency: 5500 MHz; Duty Cycle: 1:1

Medium parameters used: $f = 5500$ MHz; $\sigma = 5.65$ mho/m; $\epsilon_r = 47.2$; $\rho = 1000$ kg/m³

Phantom section: Flat Section

DASY4 Configuration:

Probe: EX3DV4 - SN3643; ConvF(3.85, 3.85, 3.85); Calibrated: 2013-01-24; Electronics: DAE3 Sn519

Phantom: SAM 1800/1900 MHz; Type: SAM; Serial: TP-1224

Measurement SW: DASY4, V4.7 Build 80; Postprocessing SW: SEMCAD, V1.8 Build 186

Test Date: 2013-05-13; Ambient Temp: 22.1; Tissue Temp: 22.6

5500 MHz System Verification

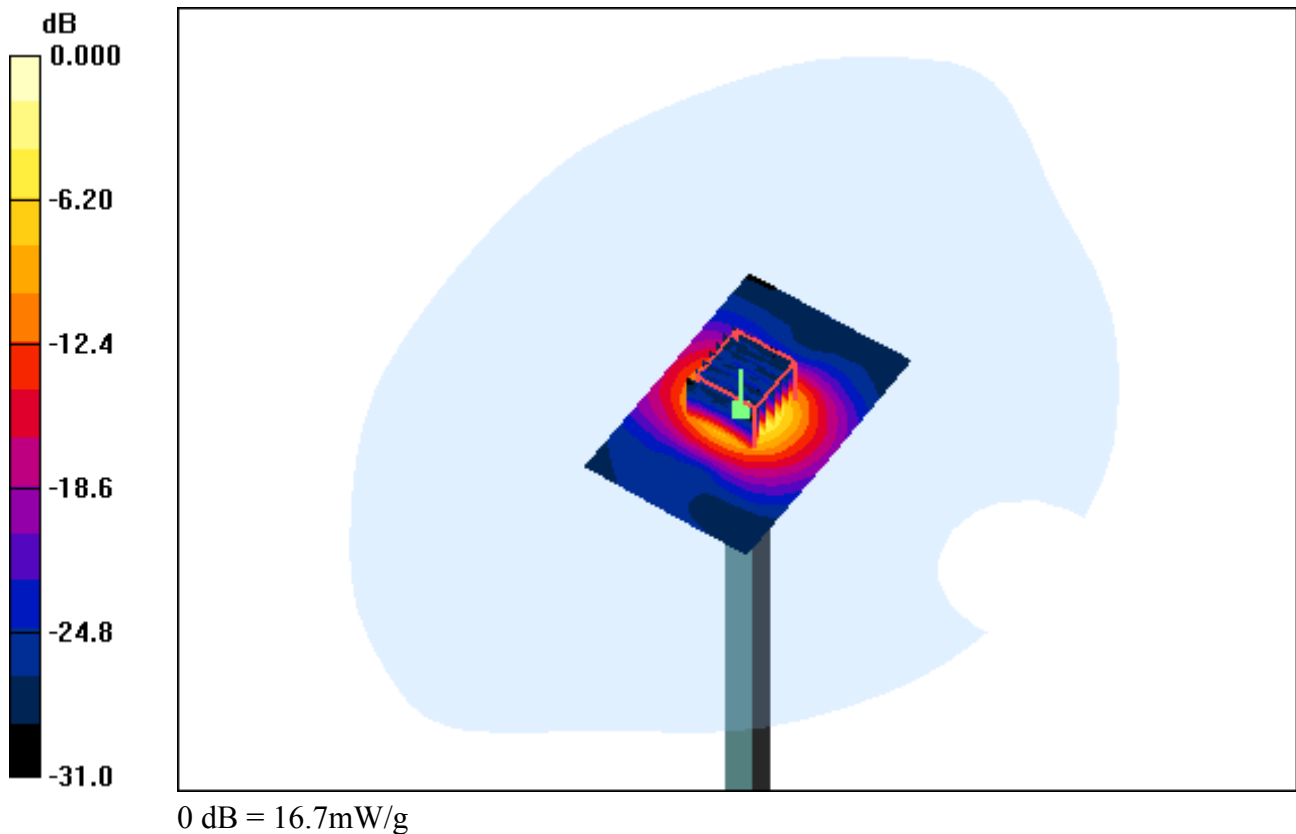
Area Scan (61x91x1): Measurement grid: dx=10mm, dy=10mm

Zoom Scan (7x7x11)/Cube 0: Measurement grid: dx=4mm, dy=4mm, dz=2mm

Power Drift = 0.041 dB

Peak SAR (extrapolated) = 36.4 W/kg

SAR(1 g) = 7.87 mW/g; SAR(10 g) = 2.25 mW/g



DIGITAL EMC CO., LTD

DUT: Dipole 5000 MHz; Type: D5GHzV2; Serial: D5GHzV2 - SN:1103

Communication System: CW; Frequency: 5500 MHz; Duty Cycle: 1:1

Medium parameters used: $f = 5500$ MHz; $\sigma = 5.65$ mho/m; $\epsilon_r = 47.2$; $\rho = 1000$ kg/m³

Phantom section: Flat Section

DASY4 Configuration:

Probe: EX3DV4 - SN3643; ConvF(3.85, 3.85, 3.85); Calibrated: 2013-01-24; Electronics: DAE3 Sn519

Phantom: SAM 1800/1900 MHz; Type: SAM; Serial: TP-1224

Measurement SW: DASY4, V4.7 Build 80; Postprocessing SW: SEMCAD, V1.8 Build 186

Test Date: 2013-05-13; Ambient Temp: 22.1; Tissue Temp: 22.6

5500 MHz System Verification

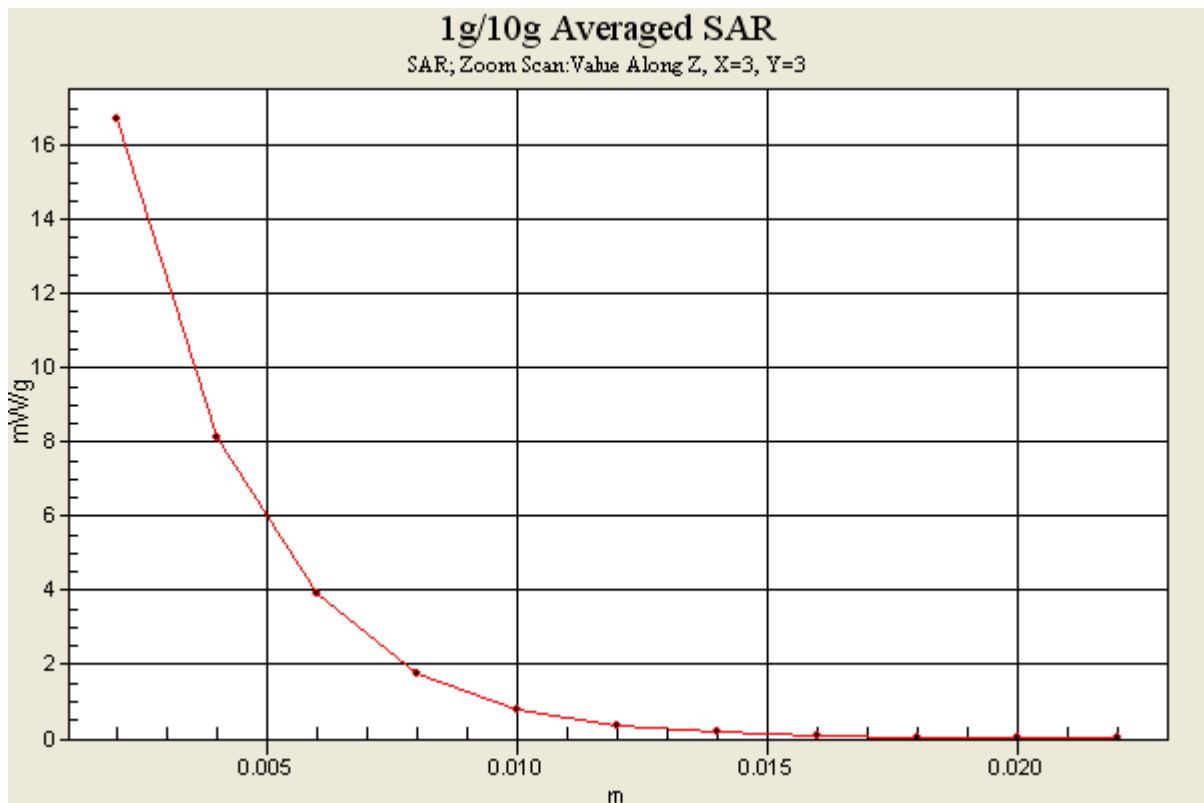
Area Scan (61x91x1): Measurement grid: dx=10mm, dy=10mm

Zoom Scan (7x7x11)/Cube 0: Measurement grid: dx=4mm, dy=4mm, dz=2mm

Power Drift = 0.041 dB

Peak SAR (extrapolated) = 36.4 W/kg

SAR(1 g) = 7.87 mW/g; SAR(10 g) = 2.25 mW/g



DIGITAL EMC CO., LTD

DUT: Dipole 5000 MHz; Type: D5GHzV2; Serial: D5GHzV2 - SN:1103

Communication System: CW; Frequency: 5600 MHz; Duty Cycle: 1:1

Medium parameters used: $f = 5600$ MHz; $\sigma = 5.78$ mho/m; $\epsilon_r = 47$; $\rho = 1000$ kg/m³

Phantom section: Flat Section

DASY4 Configuration:

Probe: EX3DV4 - SN3643; ConvF(3.69, 3.69, 3.69); Calibrated: 2013-01-24; Electronics: DAE3 Sn519

Phantom: SAM 1800/1900 MHz; Type: SAM; Serial: TP-1224

Measurement SW: DASY4, V4.7 Build 80; Postprocessing SW: SEMCAD, V1.8 Build 186

Test Date: 2013-05-13; Ambient Temp: 22.1; Tissue Temp: 22.6

5600 MHz System Verification

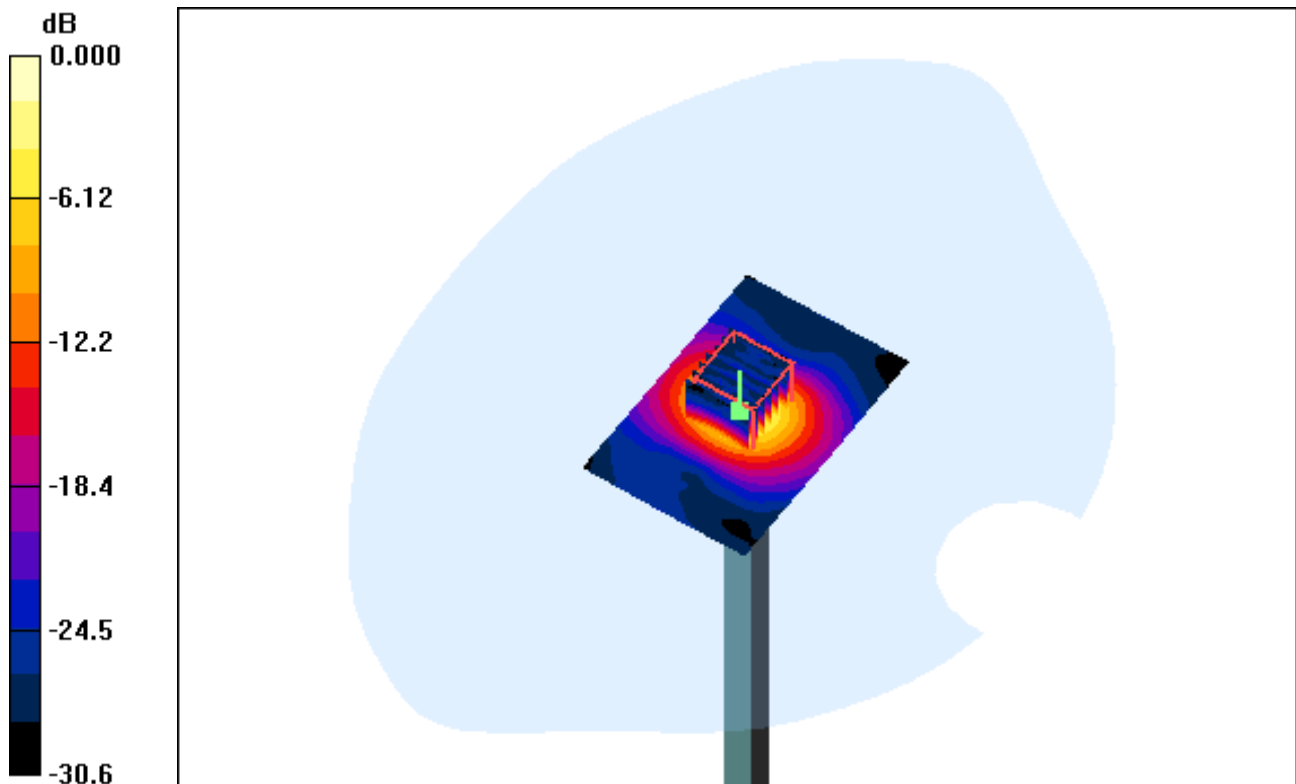
Area Scan (61x91x1): Measurement grid: dx=10mm, dy=10mm

Zoom Scan (7x7x11)/Cube 0: Measurement grid: dx=4mm, dy=4mm, dz=2mm

Power Drift = 0.056 dB

Peak SAR (extrapolated) = 38.8 W/kg

SAR(1 g) = 8.33 mW/g; SAR(10 g) = 2.39 mW/g



0 dB = 17.9mW/g

DIGITAL EMC CO., LTD

DUT: Dipole 5000 MHz; Type: D5GHzV2; Serial: D5GHzV2 - SN:1103

Communication System: CW; Frequency: 5600 MHz; Duty Cycle: 1:1

Medium parameters used: $f = 5600$ MHz; $\sigma = 5.78$ mho/m; $\epsilon_r = 47$; $\rho = 1000$ kg/m³

Phantom section: Flat Section

DASY4 Configuration:

Probe: EX3DV4 - SN3643; ConvF(3.69, 3.69, 3.69); Calibrated: 2013-01-24; Electronics: DAE3 Sn519

Phantom: SAM 1800/1900 MHz; Type: SAM; Serial: TP-1224

Measurement SW: DASY4, V4.7 Build 80; Postprocessing SW: SEMCAD, V1.8 Build 186

Test Date: 2013-05-13; Ambient Temp: 22.1; Tissue Temp: 22.6

5600 MHz System Verification

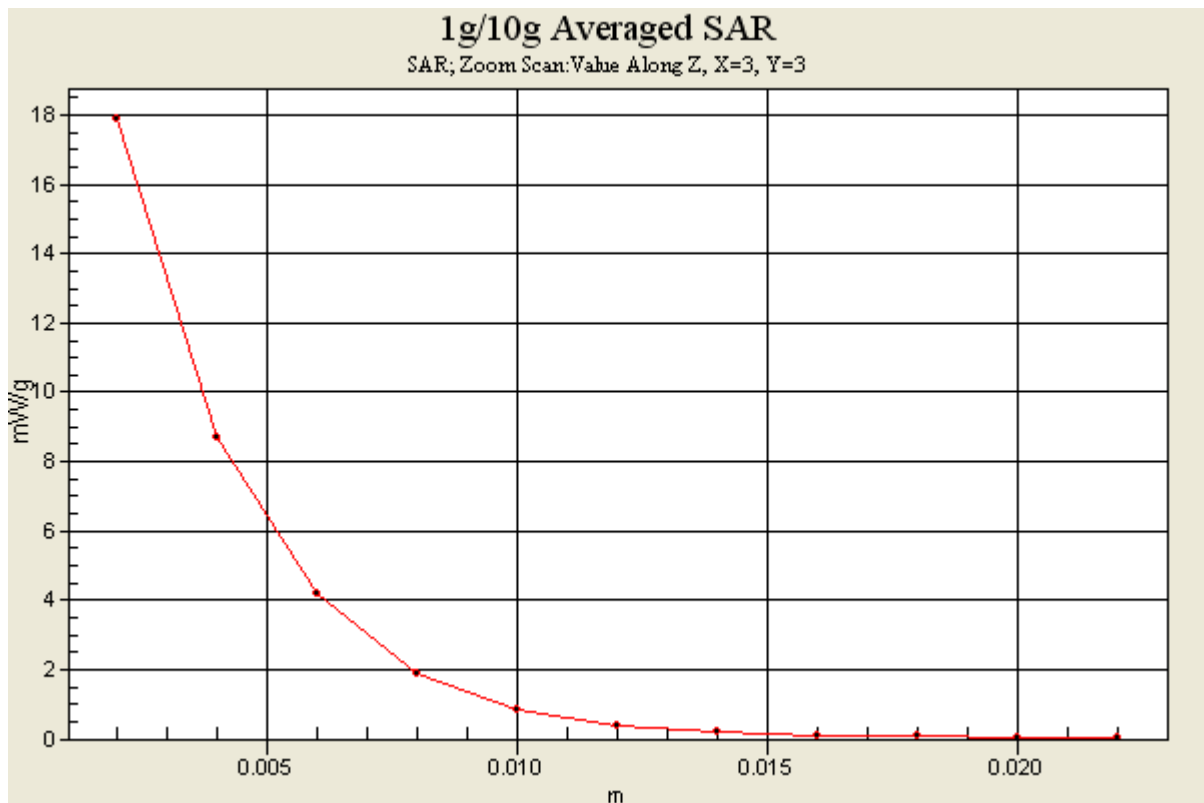
Area Scan (61x91x1): Measurement grid: dx=10mm, dy=10mm

Zoom Scan (7x7x11)/Cube 0: Measurement grid: dx=4mm, dy=4mm, dz=2mm

Power Drift = 0.056 dB

Peak SAR (extrapolated) = 38.8 W/kg

SAR(1 g) = 8.33 mW/g; SAR(10 g) = 2.39 mW/g



DIGITAL EMC CO., LTD

DUT: Dipole 5000 MHz; Type: D5GHzV2; Serial: D5GHzV2 - SN:1103

Communication System: CW; Frequency: 5800 MHz; Duty Cycle: 1:1

Medium parameters used: $f = 5800$ MHz; $\sigma = 6.04$ mho/m; $\epsilon_r = 46.6$; $\rho = 1000$ kg/m³

Phantom section: Flat Section

DASY4 Configuration:

Probe: EX3DV4 - SN3643; ConvF(3.85, 3.85, 3.85); Calibrated: 2013-01-24; Electronics: DAE3 Sn519

Phantom: SAM 1800/1900 MHz; Type: SAM; Serial: TP-1224

Measurement SW: DASY4, V4.7 Build 80; Postprocessing SW: SEMCAD, V1.8 Build 186

Test Date: 2013-05-13; Ambient Temp: 22.1; Tissue Temp: 22.6

5800 MHz System Verification

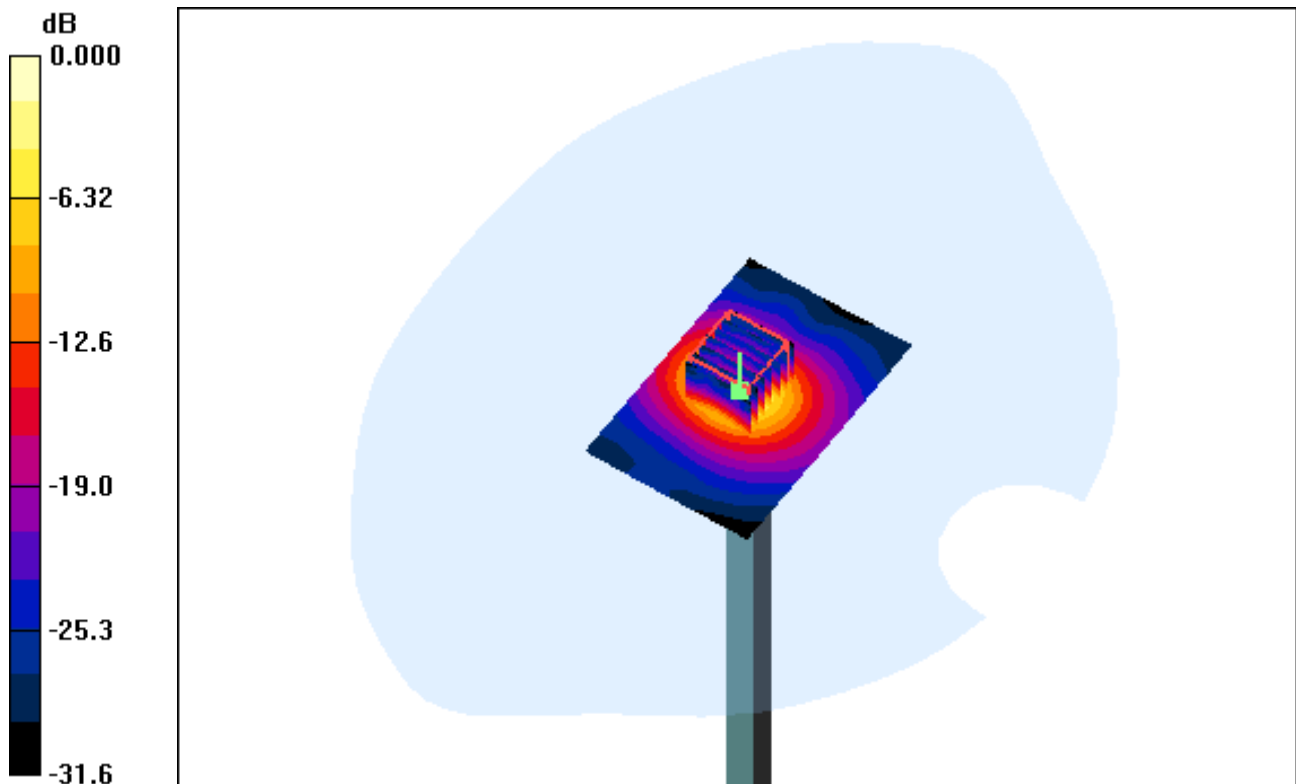
Area Scan (61x91x1): Measurement grid: dx=10mm, dy=10mm

Zoom Scan (7x7x11)/Cube 0: Measurement grid: dx=4mm, dy=4mm, dz=2mm

Power Drift = 0.159 dB

Peak SAR (extrapolated) = 26.9 W/kg

SAR(1 g) = 7.11 mW/g; SAR(10 g) = 2.01 mW/g



0 dB = 14.6mW/g

DIGITAL EMC CO., LTD

DUT: Dipole 5000 MHz; Type: D5GHzV2; Serial: D5GHzV2 - SN:1103

Communication System: CW; Frequency: 5800 MHz; Duty Cycle: 1:1

Medium parameters used: $f = 5800$ MHz; $\sigma = 6.04$ mho/m; $\epsilon_r = 46.6$; $\rho = 1000$ kg/m³

Phantom section: Flat Section

DASY4 Configuration:

Probe: EX3DV4 - SN3643; ConvF(3.85, 3.85, 3.85); Calibrated: 2013-01-24; Electronics: DAE3 Sn519

Phantom: SAM 1800/1900 MHz; Type: SAM; Serial: TP-1224

Measurement SW: DASY4, V4.7 Build 80; Postprocessing SW: SEMCAD, V1.8 Build 186

Test Date: 2013-05-13; Ambient Temp: 22.1; Tissue Temp: 22.6

5800 MHz System Verification

Area Scan (61x91x1): Measurement grid: dx=10mm, dy=10mm

Zoom Scan (7x7x11)/Cube 0: Measurement grid: dx=4mm, dy=4mm, dz=2mm

Power Drift = 0.159 dB

Peak SAR (extrapolated) = 26.9 W/kg

SAR(1 g) = 7.11 mW/g; SAR(10 g) = 2.01 mW/g

