

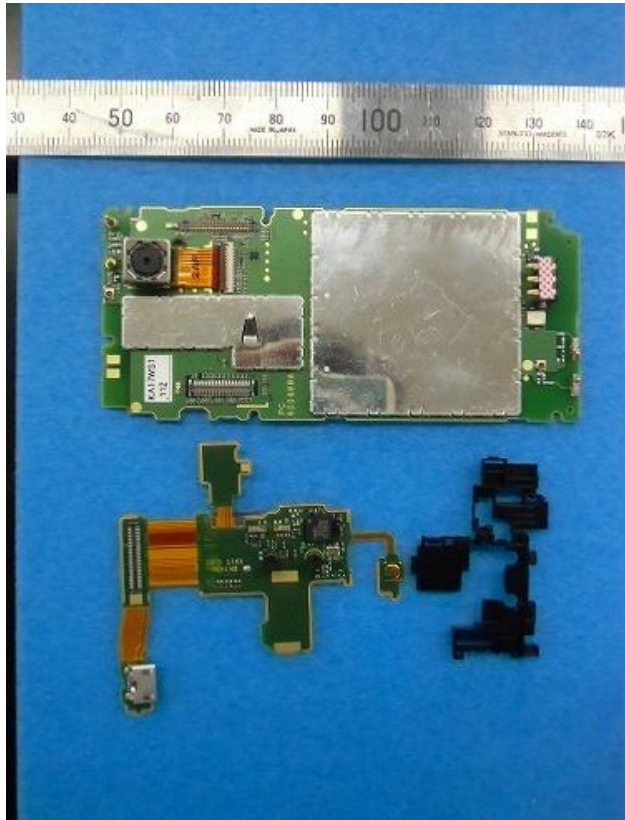
KEY REAR open



KEY REAR open & Main Antenna



**Main PCB L8 & Sub FPC L4**



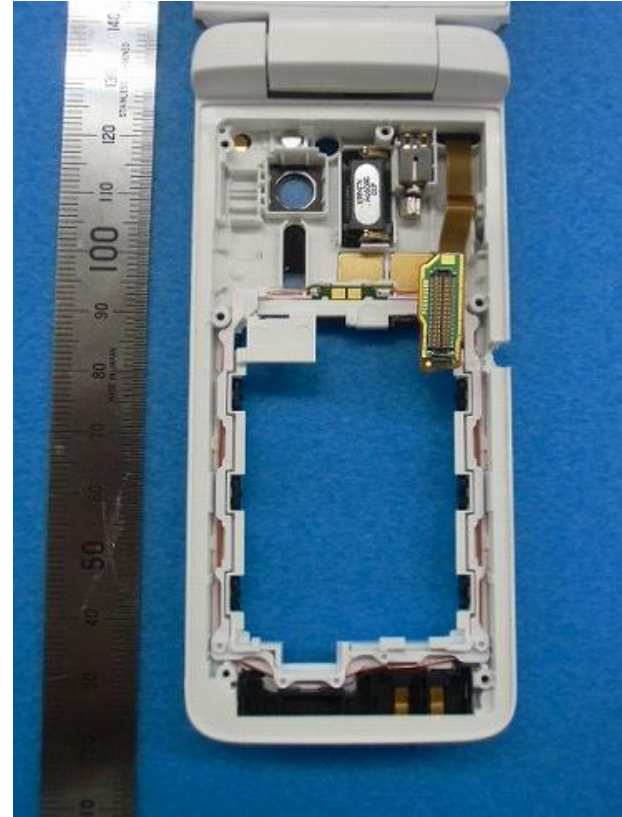
**Main PCB L1 & Sub FPC L1**



**Main PCB L8 without shield**



**KEY FRONT open & Sub Antenna**





LCD REAR OPEN



LCD FRONT OPEN



## LCD module & LCD PCB

