

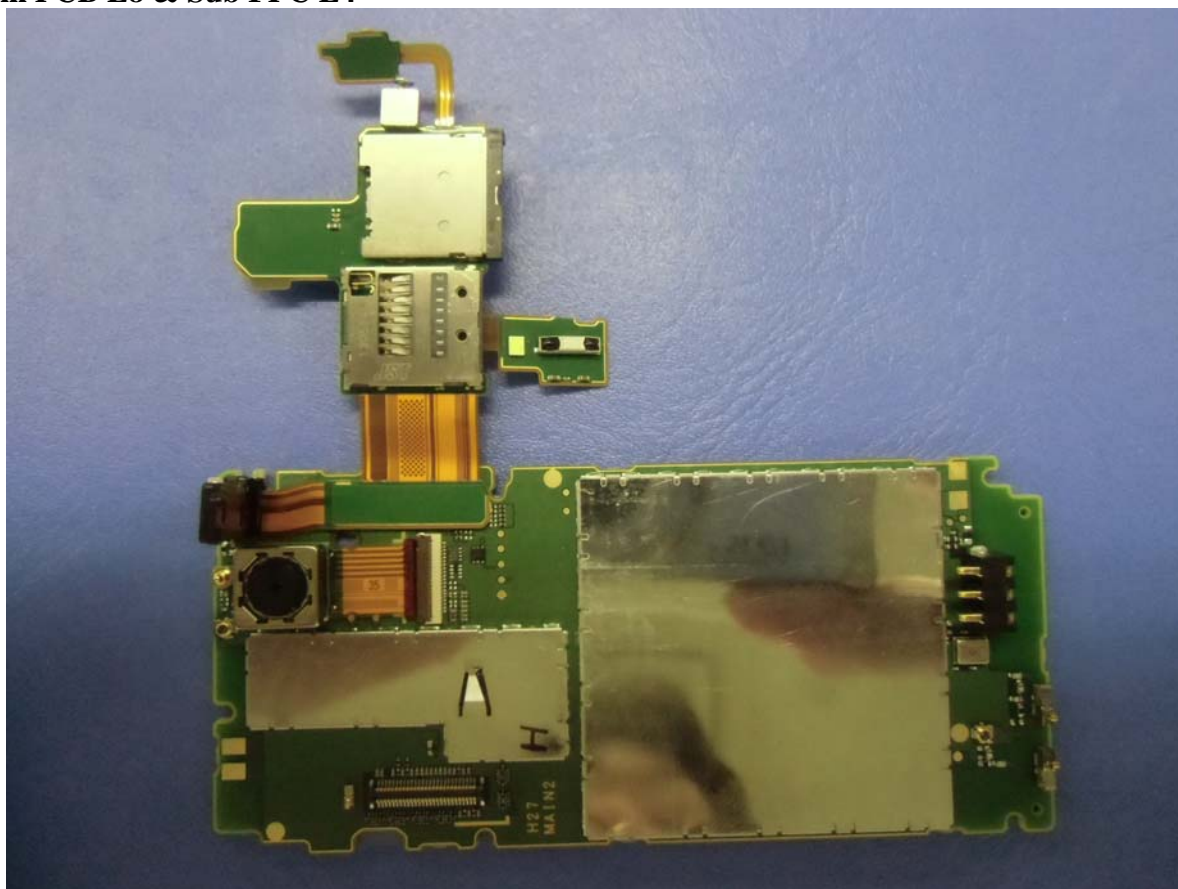
KEY REAR open



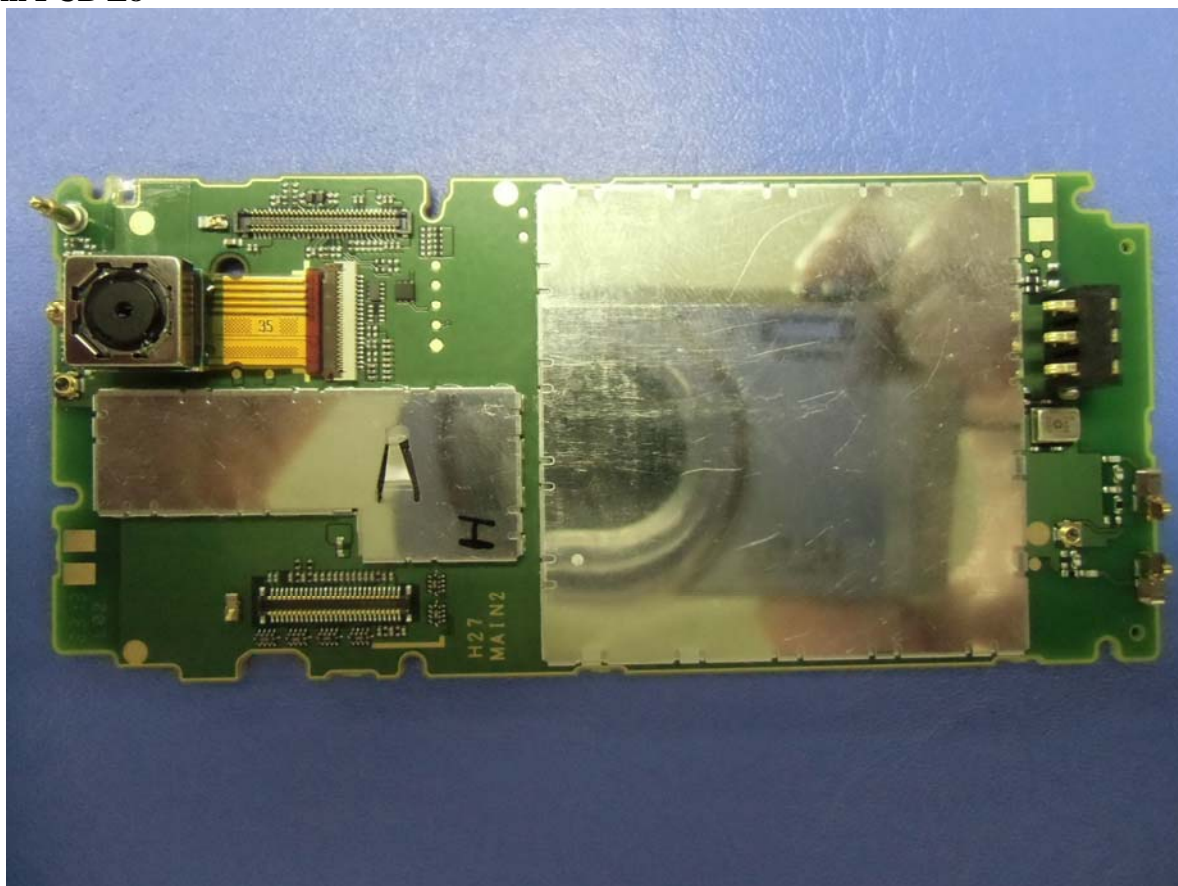
KEY REAR open & Main Antenna



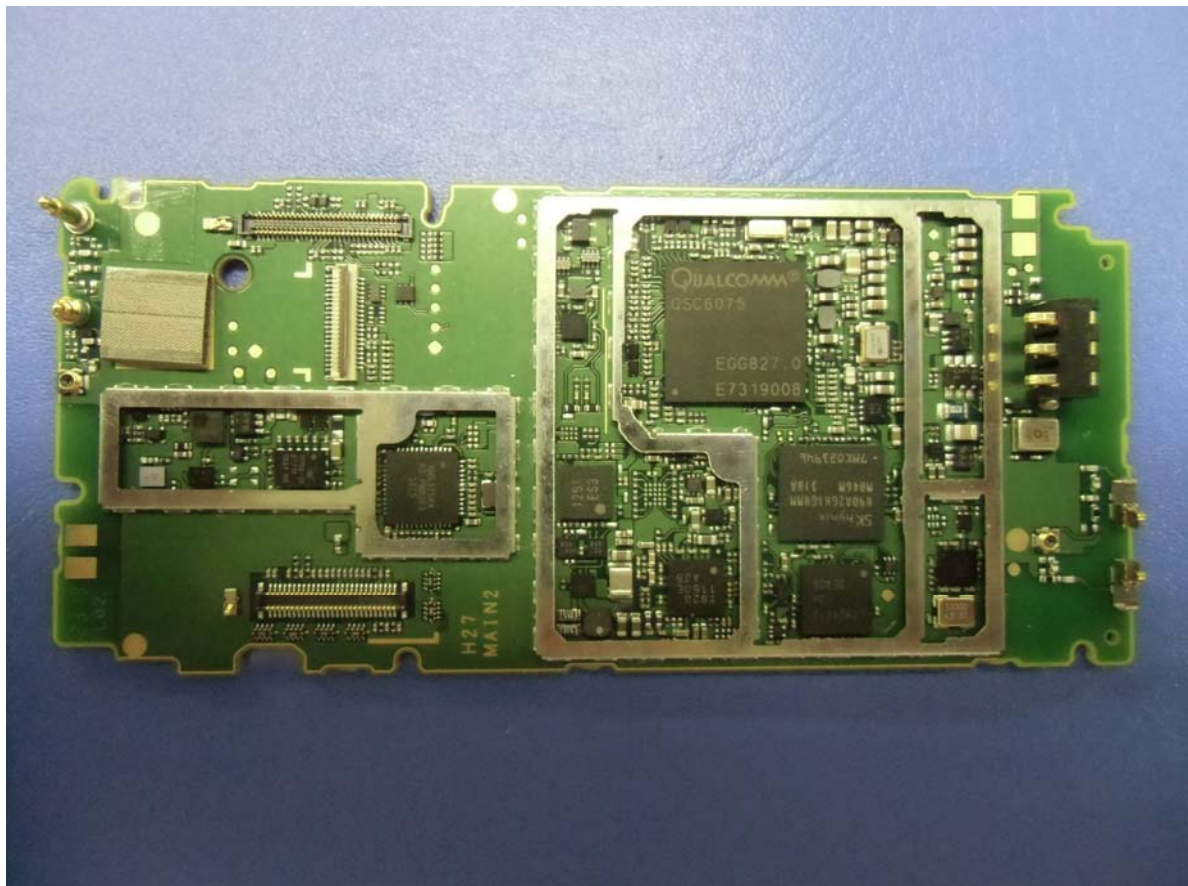
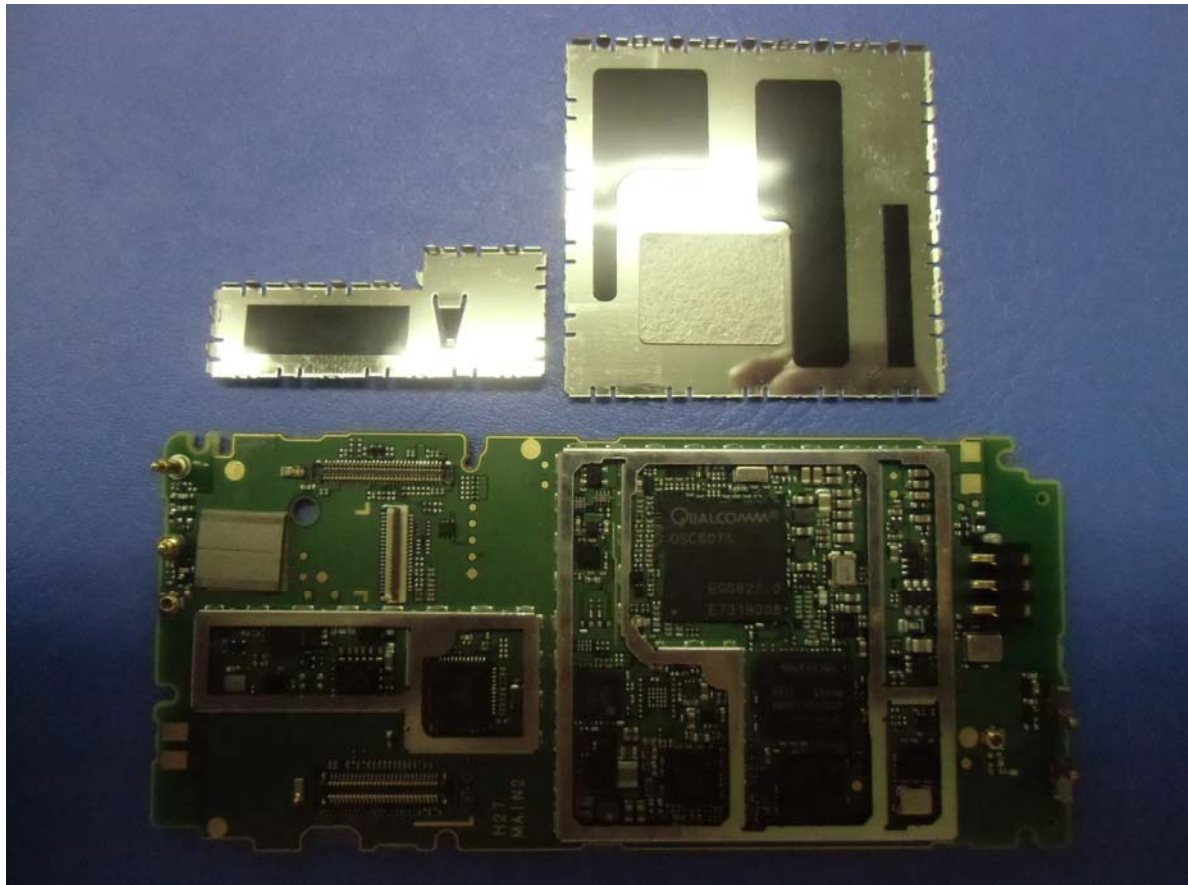
Main PCB L8 & Sub FPC L4



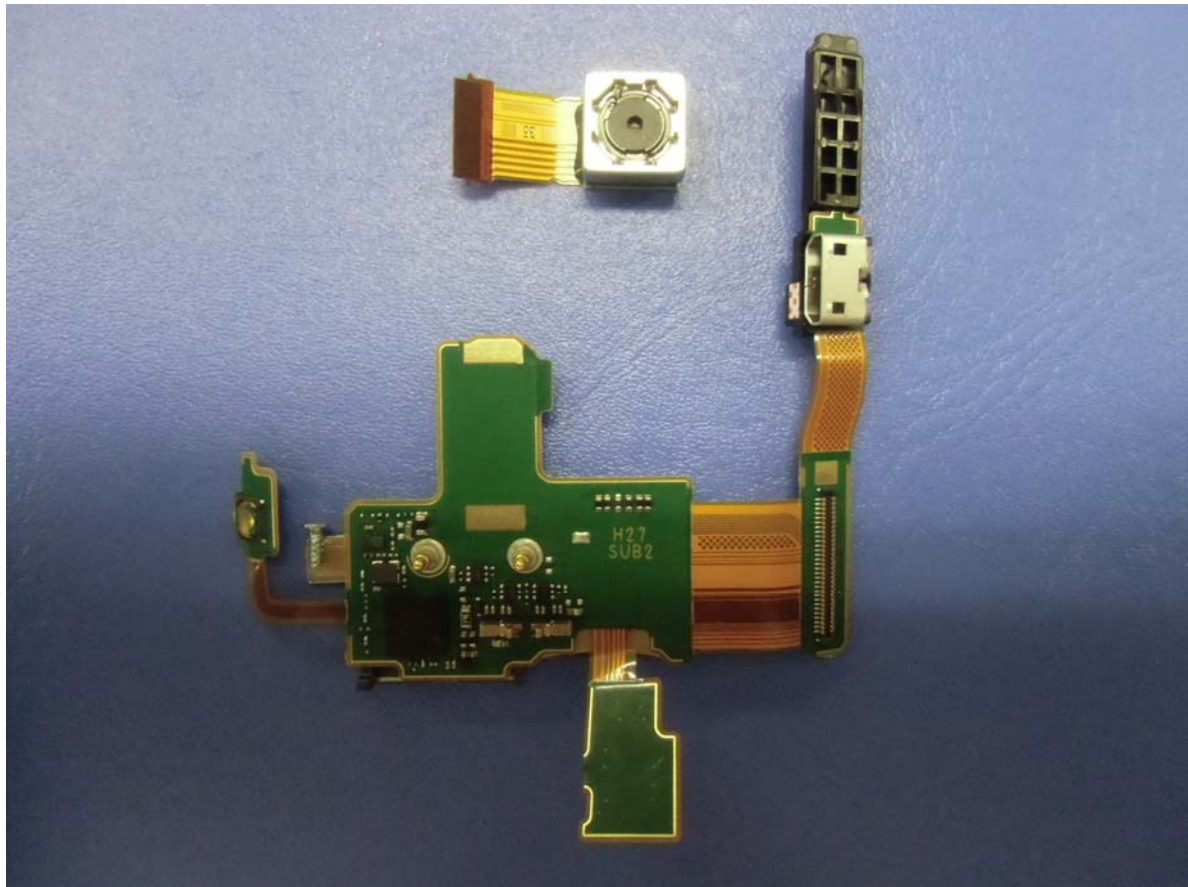
Main PCB L8



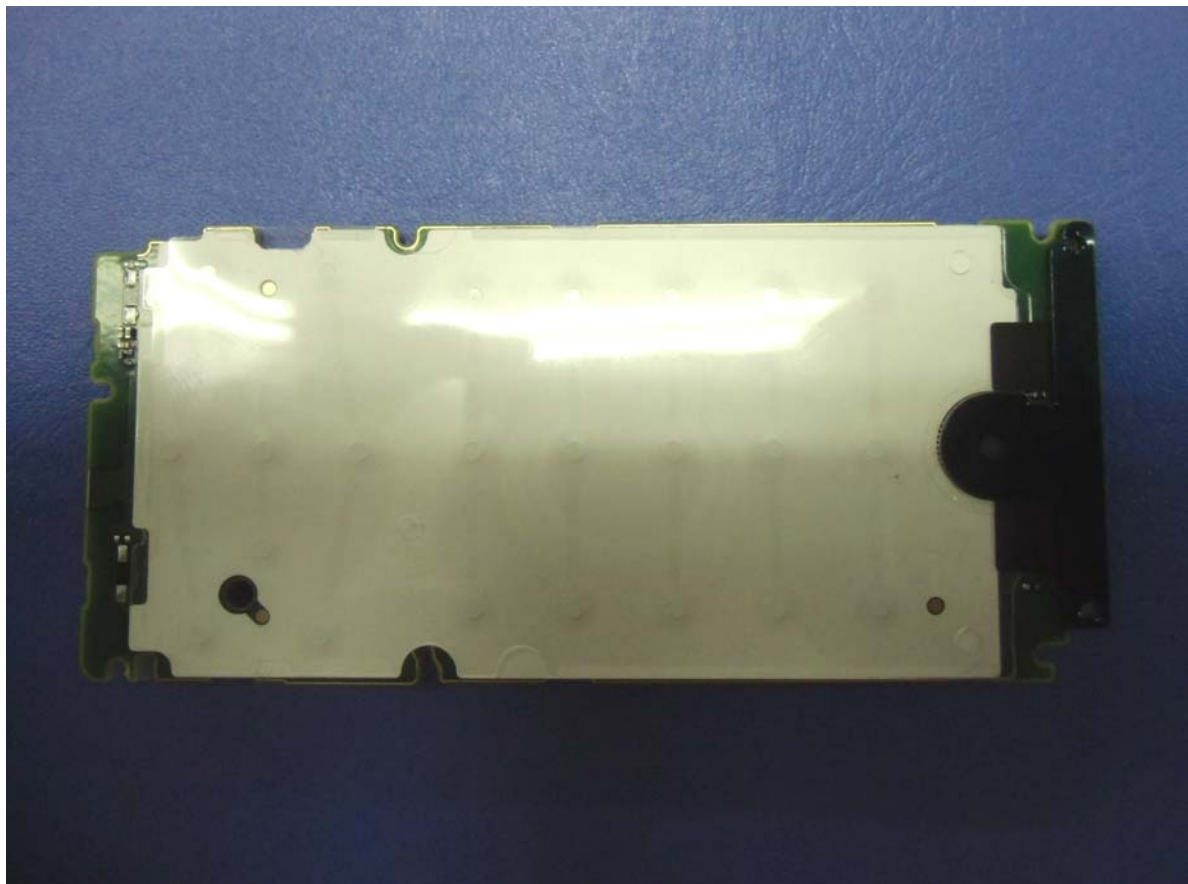
Main PCB L8 without Shield



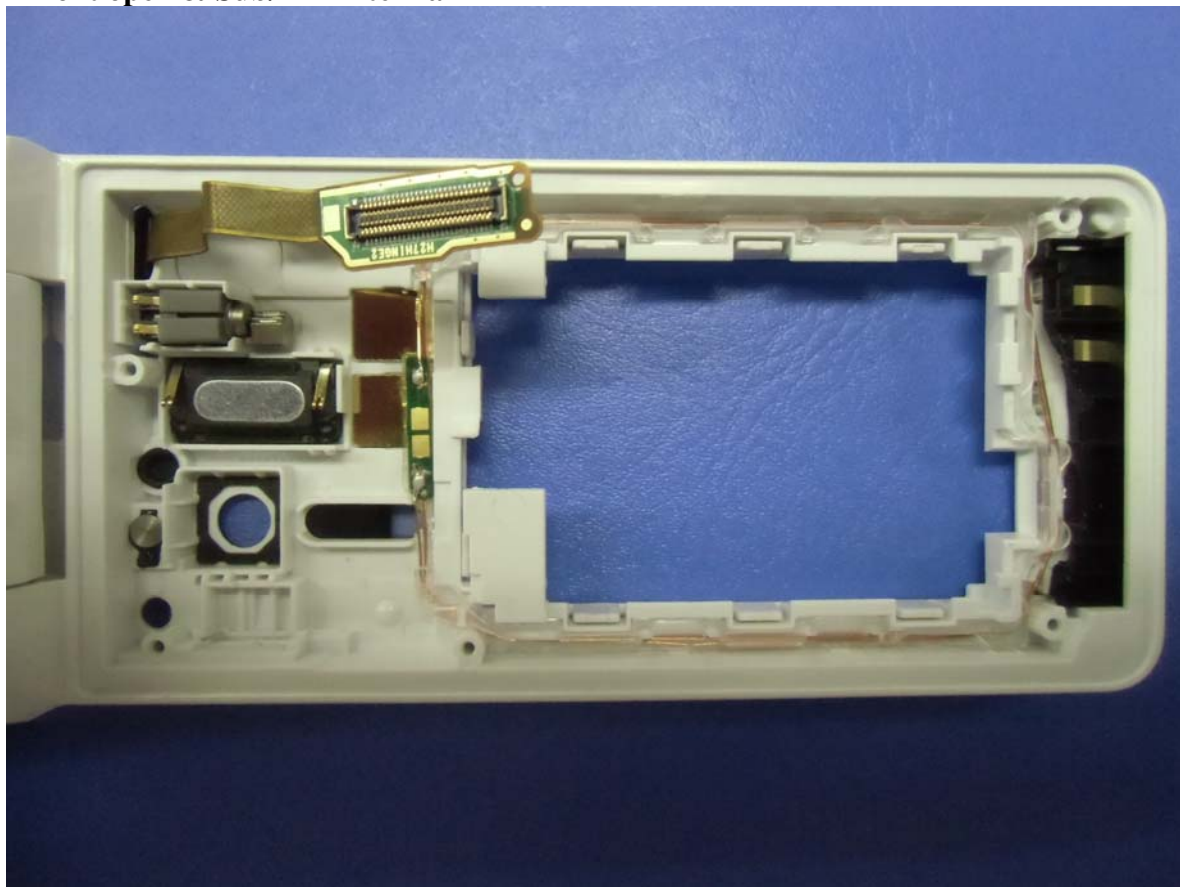
Sub FPC L4



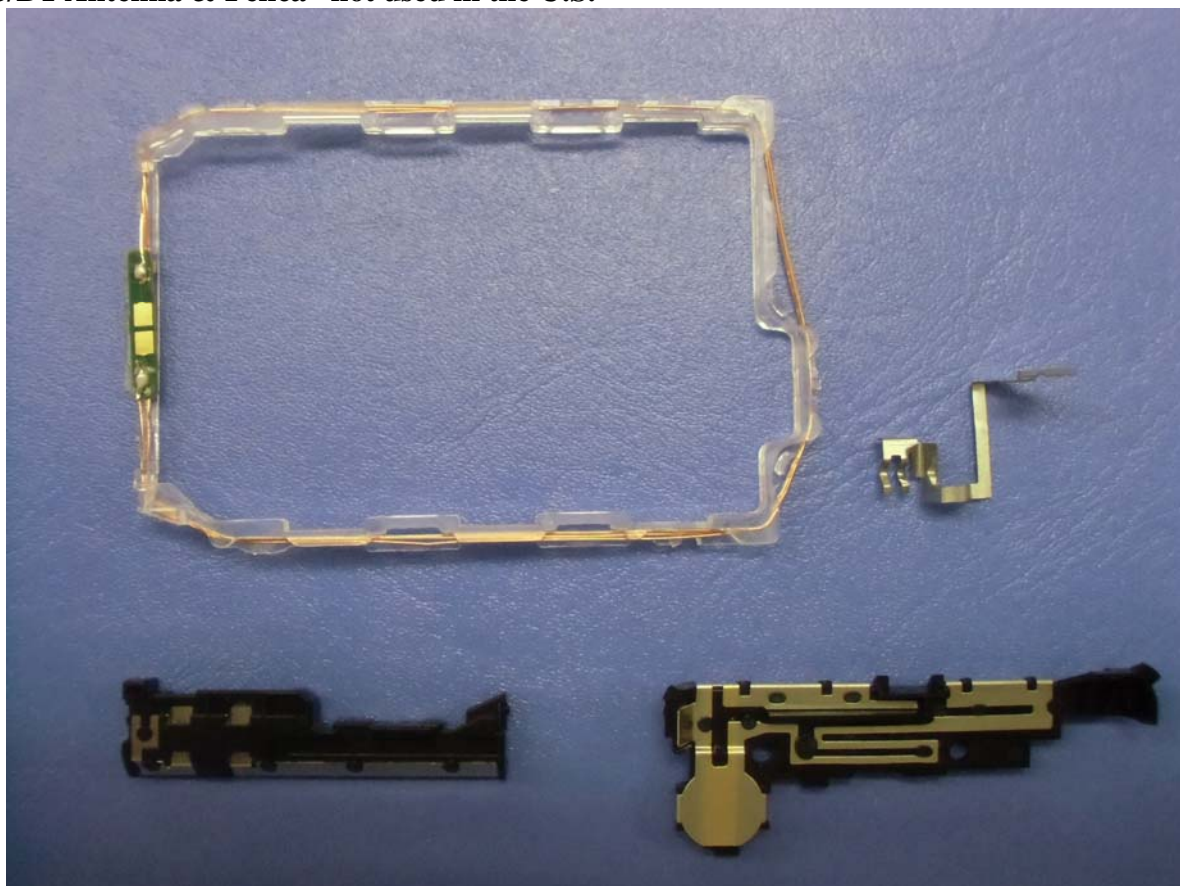
Main PCB L1



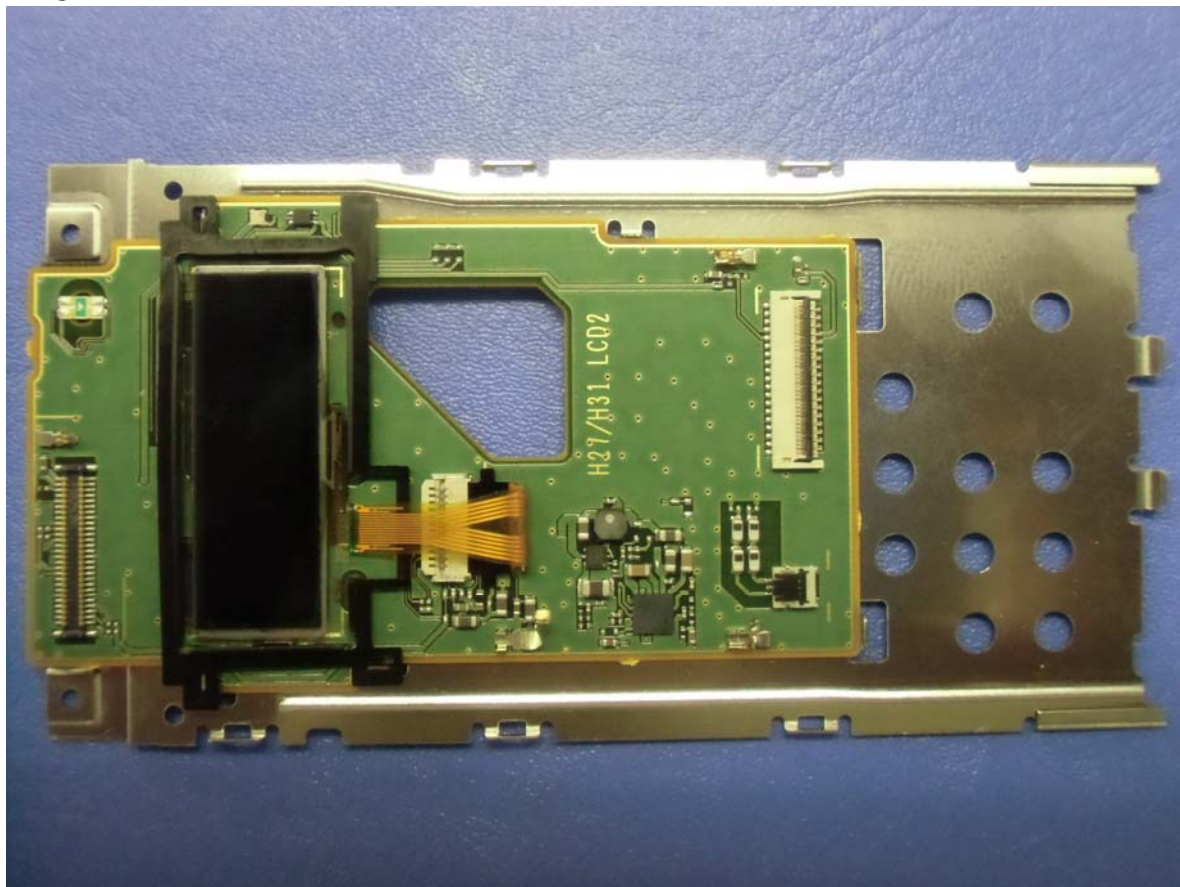
KEY front open & Sub/BT Antenna



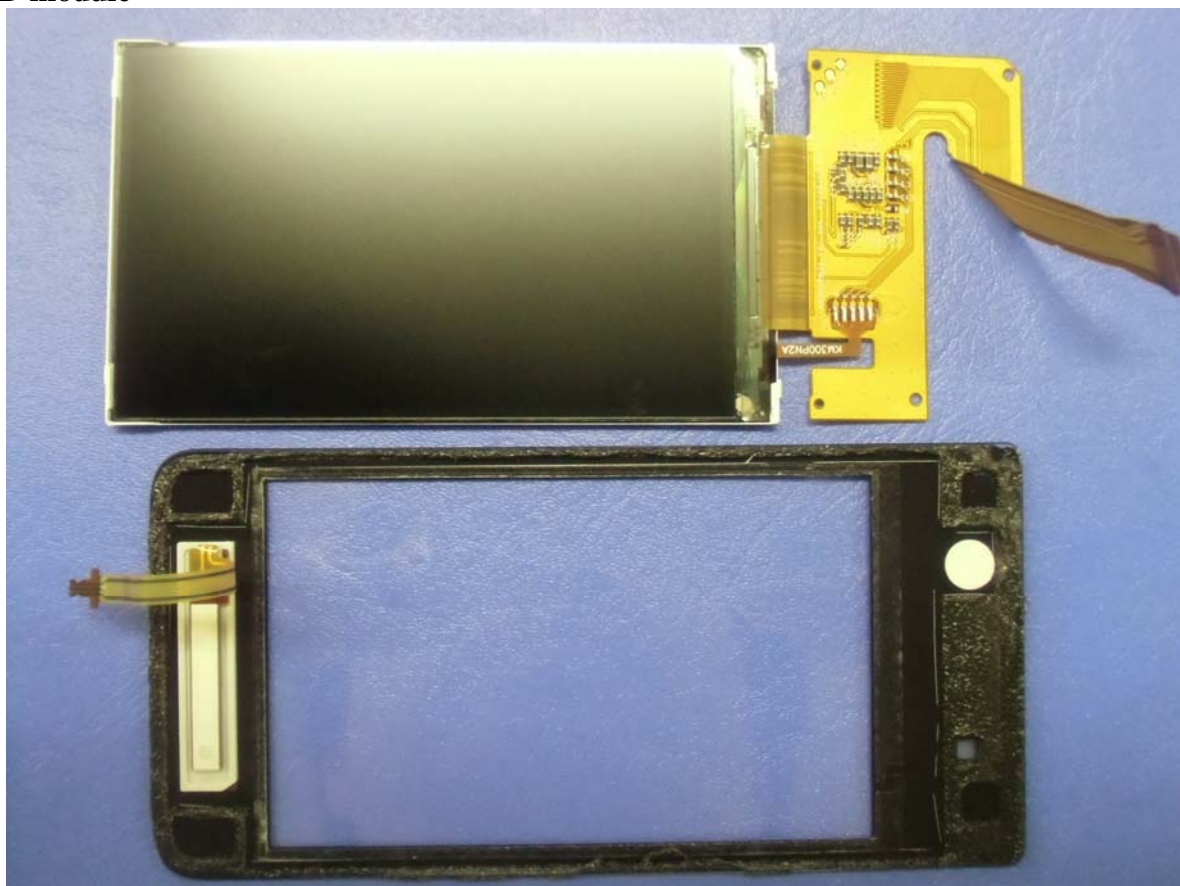
Sub/BT Antenna & Felica* not used in the U.S.



LCD PCB



LCD module



KEY pad

