

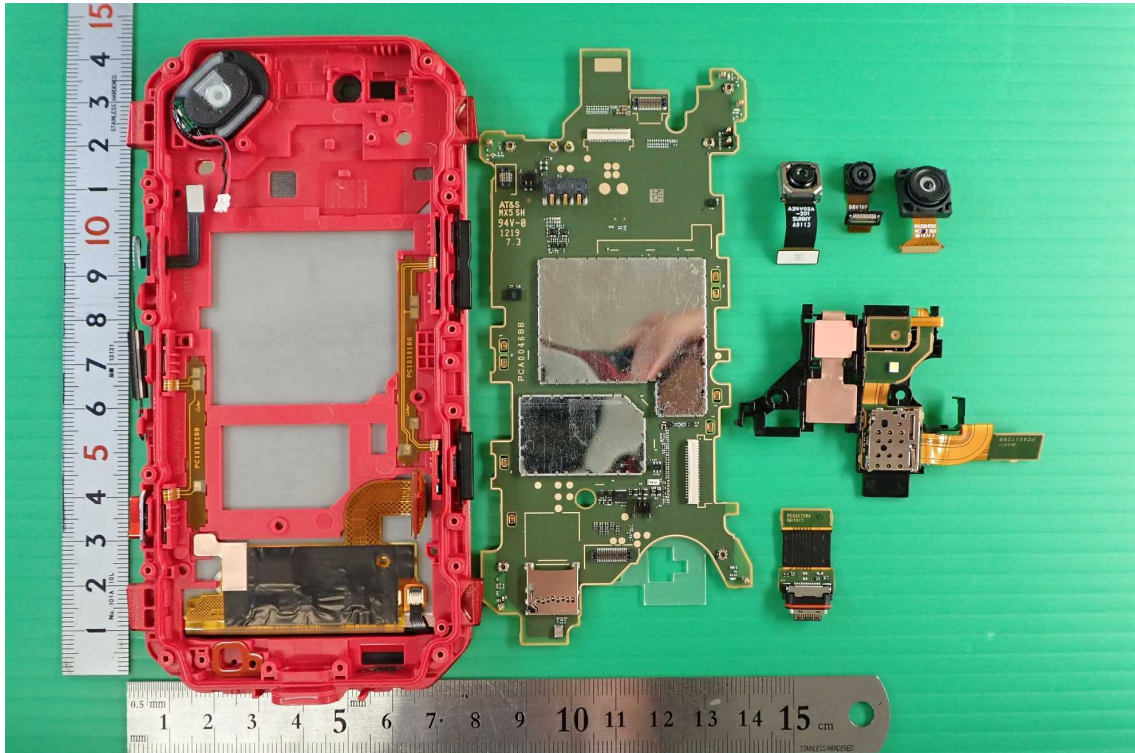
Rear cover open



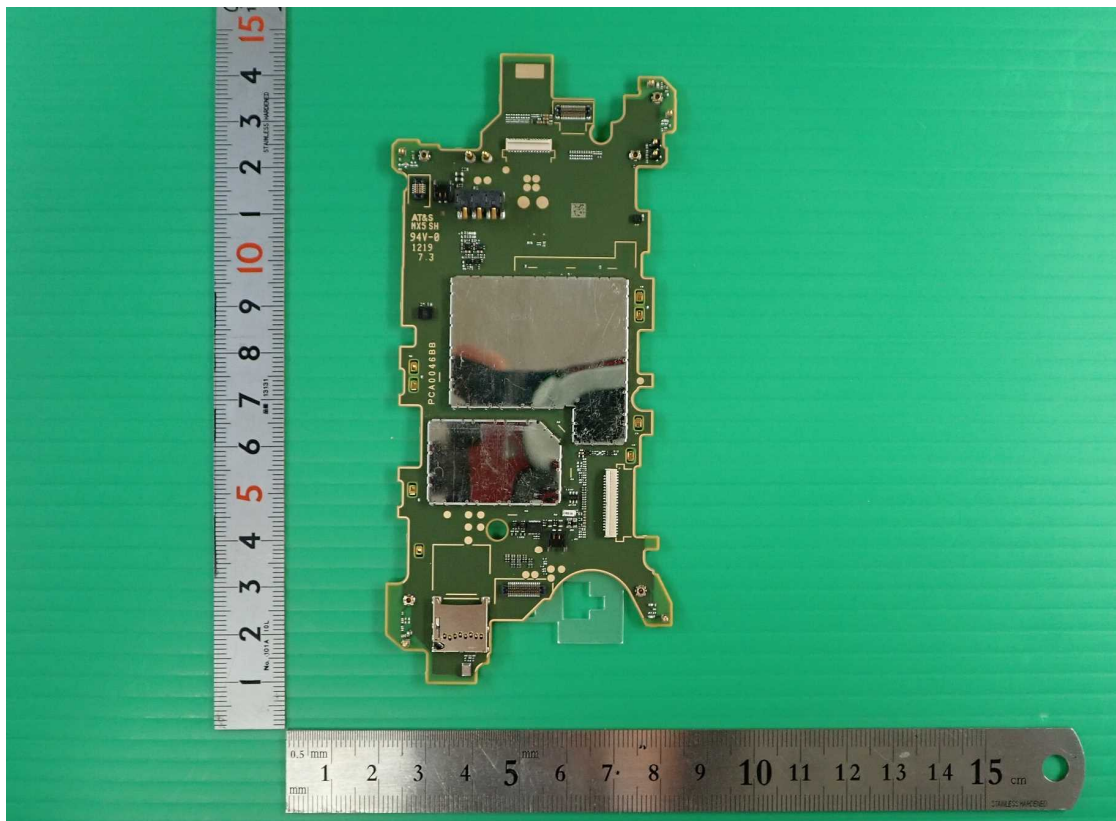
Rear cover open 2



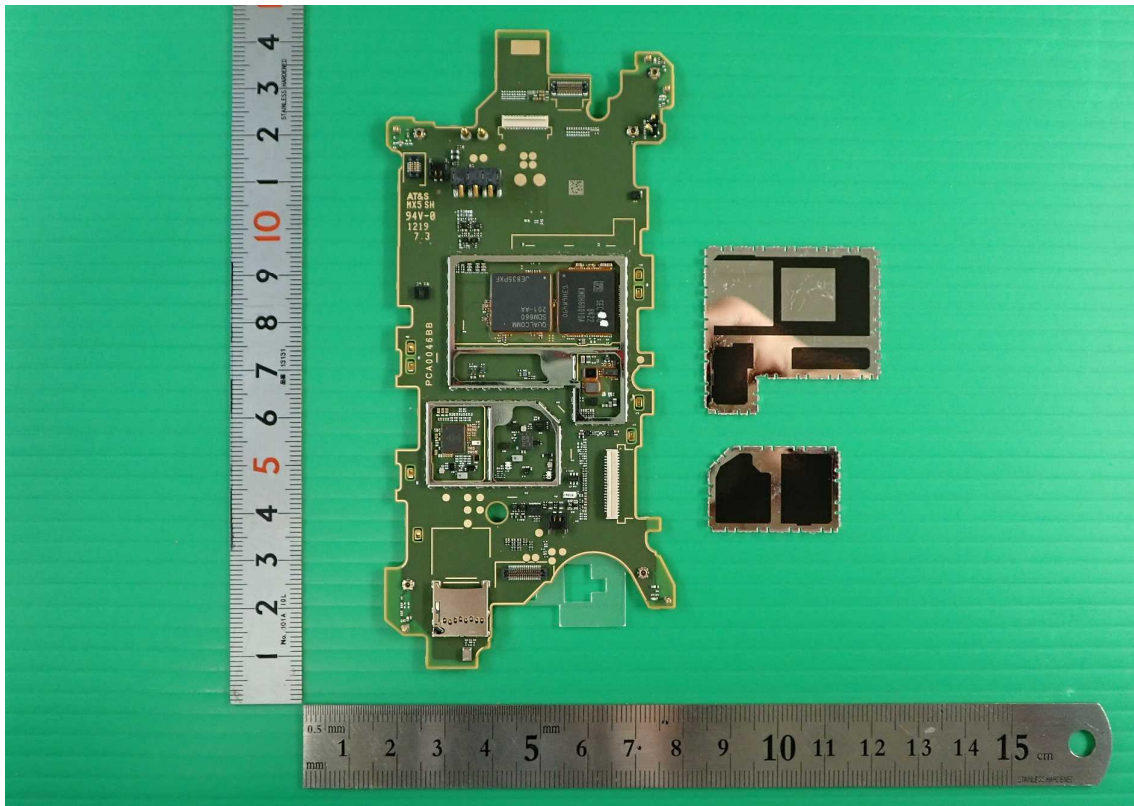
**Rear cover open 3(Main PCB, Sub FPC, Camera, Mic, Speaker FPC)**



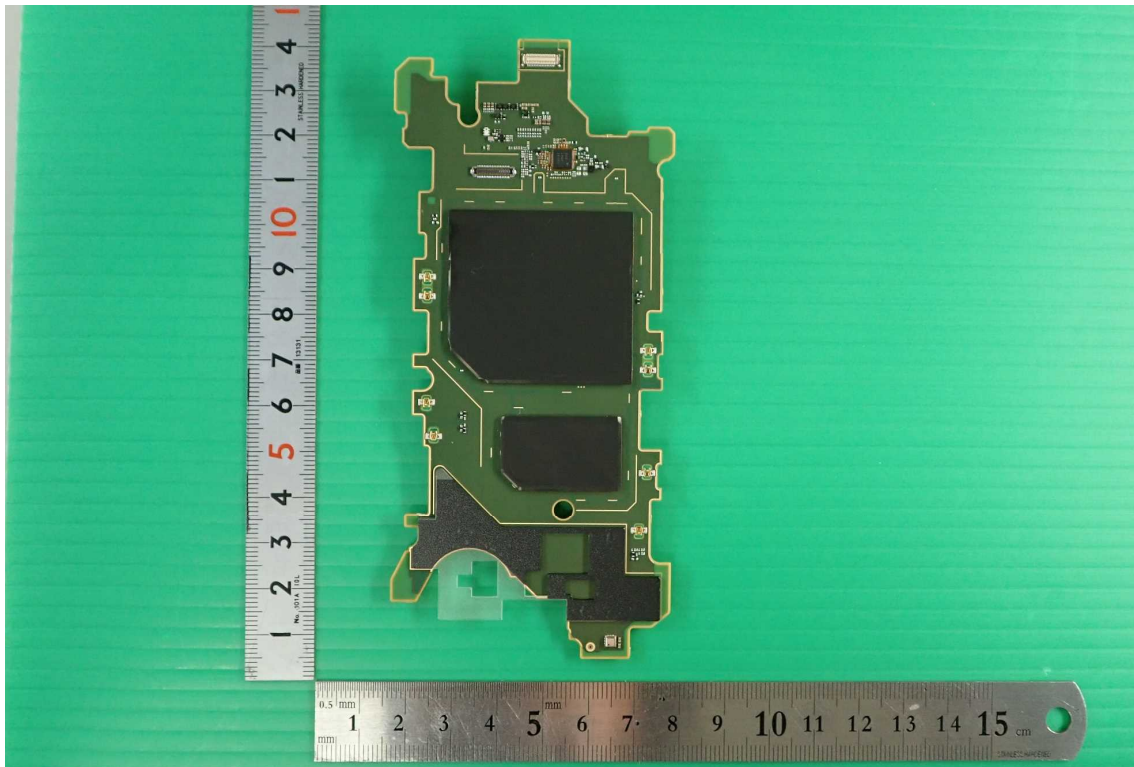
**Main PCB front**



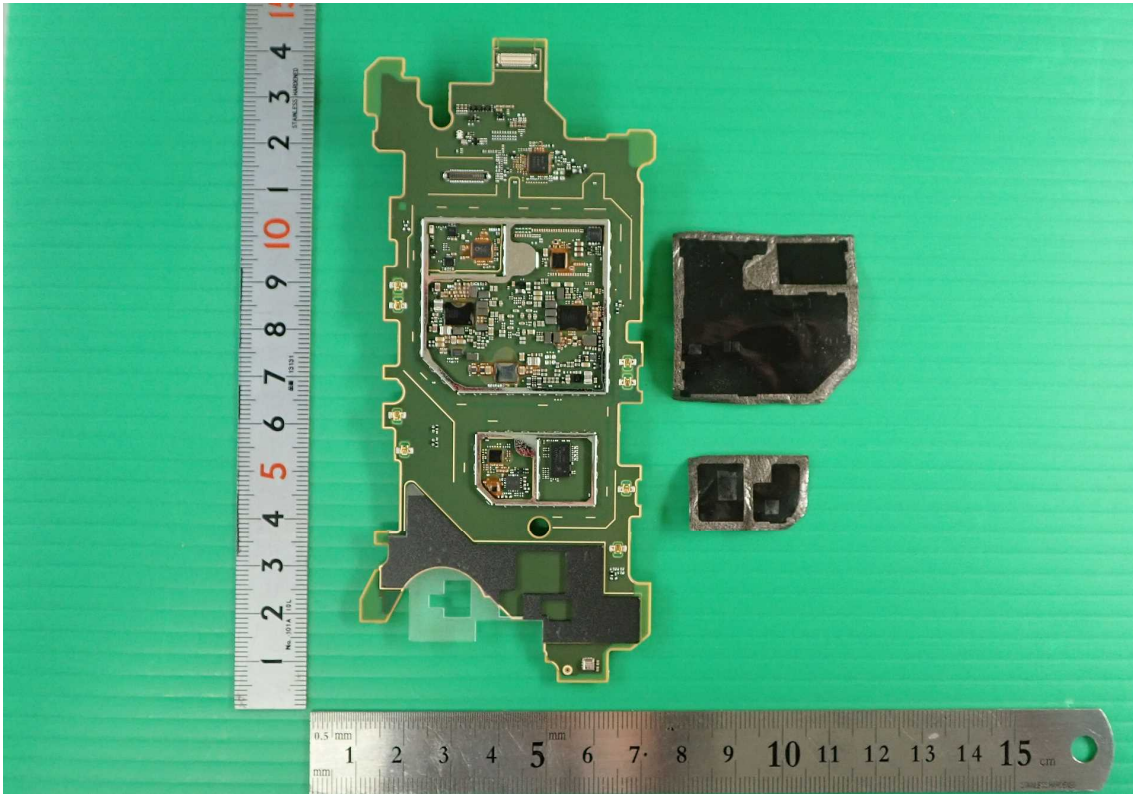
Main PCB front shield open



Main PCB rear



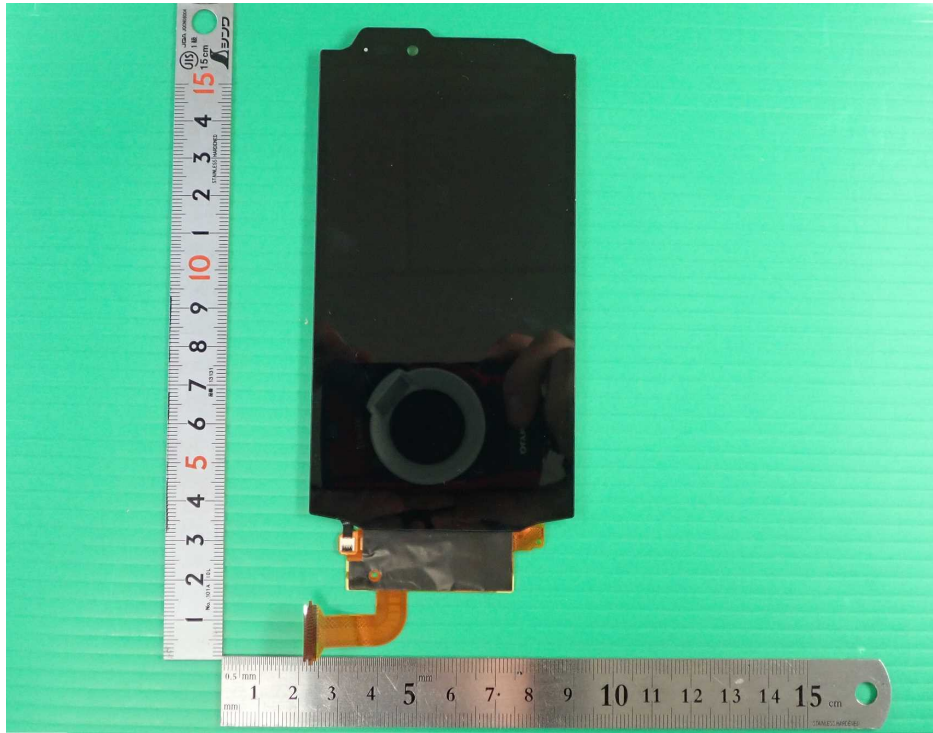
Main PCB rear shield open



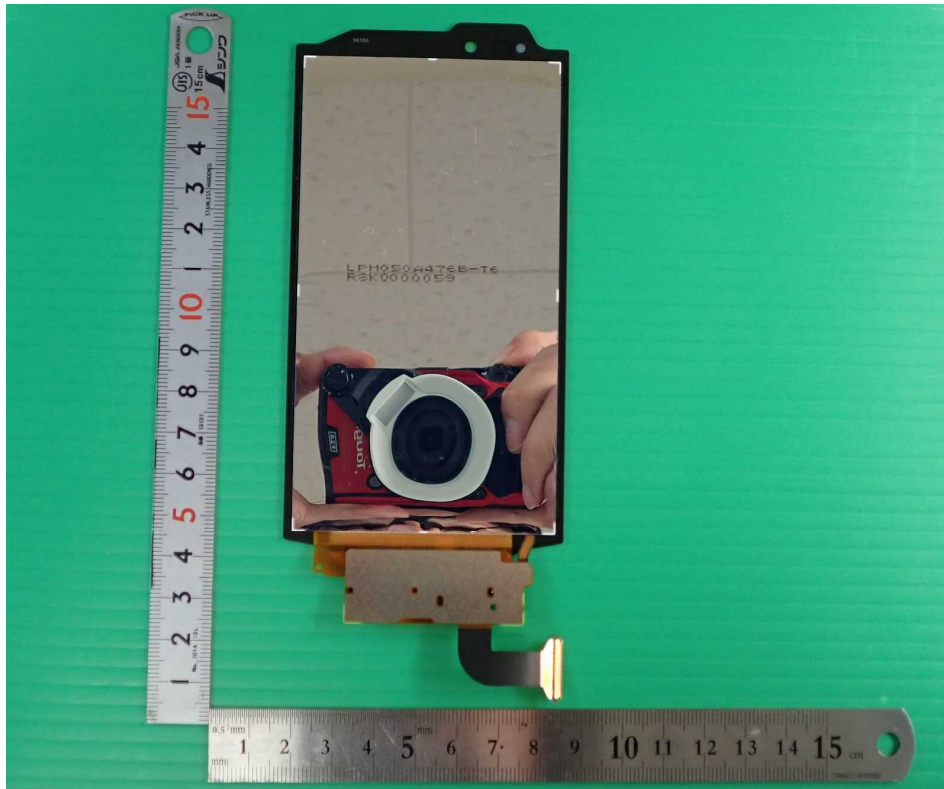
Front cover



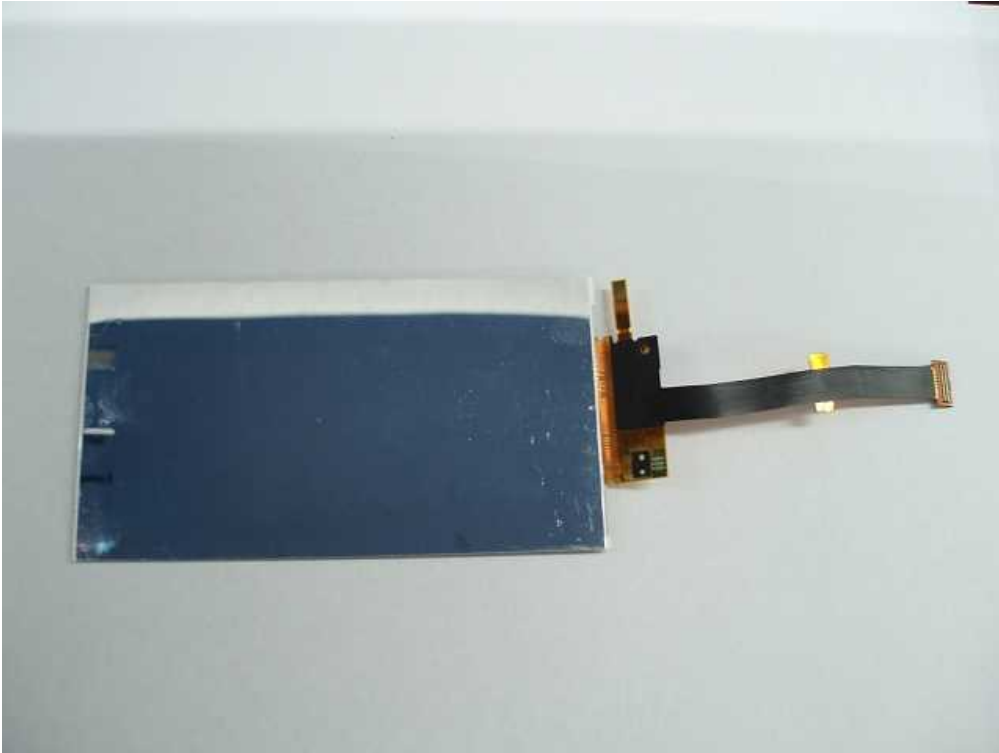
LCD front



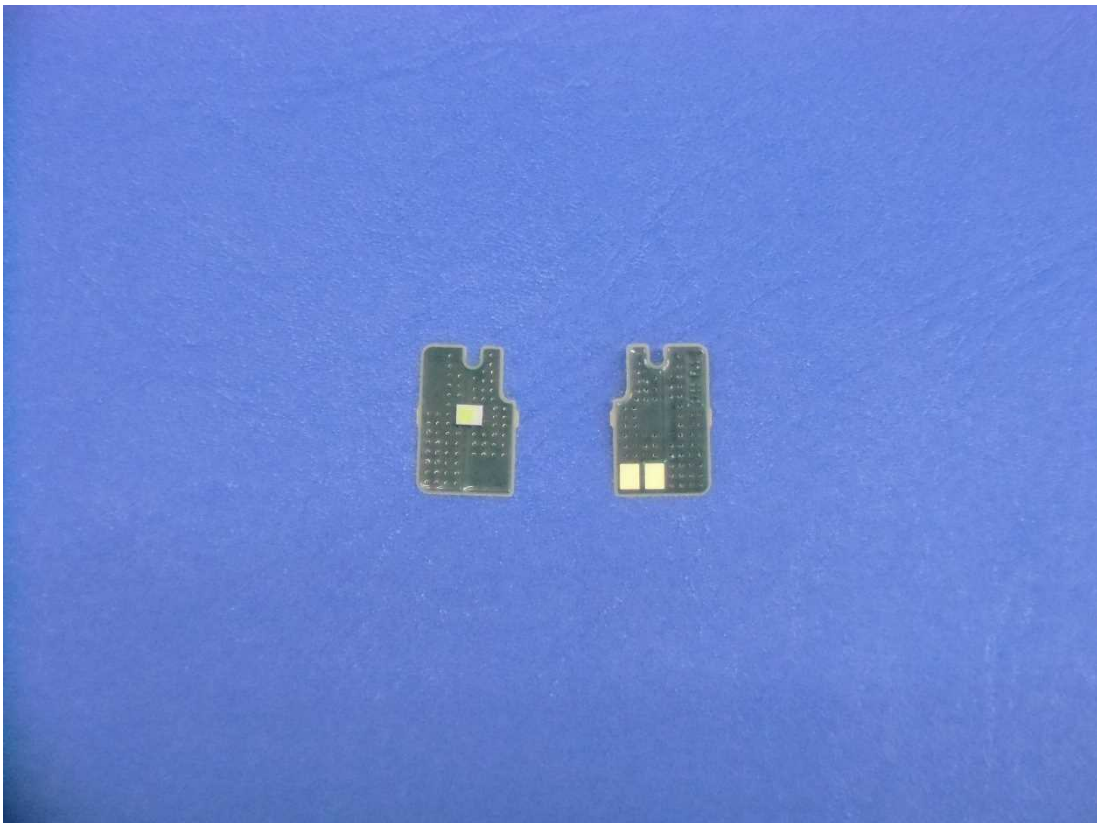
LCD rear



**LCD rear**



**Flash PCB**



**Antenna FPC**



**Sub FPC**

