

iBurst Modem User's manual



Approved	Checked	Designed
Koyama	Yamamoto	Hirao

Reference:	Q34T-EE-001
Revision:	1.01
Date:	June.08.2006

Revision Record

Revision	Author	Date	Detail
1.00	Hirao	May.10.2006	First Release
1.01	Miyasaka	June.08.2006	Correct some writings

CONTENTS

Safety Precautions on iBurst Modem	4
Chapter 1 Introduction	8
Components List	9
Outlook of iBurst Modem	9
Requirements on your PC	10
Outlook to use the iBurst Modem.....	10
Indicators	10
Chapter 2 Setup Procedure.....	11
iBurst Software Installation	12
Installation for Windows XP	12
Installation for Windows 2000	15
Installation for Windows Me	18
Installation for Windows 98SE.....	36
Installation for Mac OS X.....	56
Connection Establishment	60
Connection Establishment for Windows XP	60
Connection Establishment for Windows 2000/Me/98SE.....	65
Connection Establishment for Mac OS X.....	66
Chapter 3 Utility Software	70
Using Utility Software.....	71
Using Utility Software for Windows.....	71
Using Utility Software for Mac OS X	77
Chapter 4 MTU Optimizer Software & Network Property.....	83
MTU Optimizer Software & Network Property.....	84
Chapter 5 Uninstallation.....	87
iBurst Software Uninstallation.....	88
Uninstallation for Windows XP/2000	88
Uninstallation for Windows Me/98SE	90
Uninstallation for Mac OS X.....	97
Chapter 6 Trouble shooting.....	99
Windows	100
Illegal hang-up when install iBurst Modem.....	100
Illegal hang-up when set up dialer.....	102
Mac	104
Data rate.....	104
Chapter 7 Information	105
FCC Compliance Statement.....	106
FCC RF Radiation Exposure Statement.....	106

Safety Precautions on iBurst Modem

- Things you must know
 - When using the product, use it correctly according to the safety precautions.
 - The product uses particular radio frequency band tuned for the network operator.
 - The safety precautions, hardware, software, and the design of the product may be changed in the future without any announcement to the customers.

- About use restriction
 - The product is designed as an OA apparatus for home use. Please use it neither in the medical apparatus directly to affect a human life, nor the system of which very high reliability is required.
 - Do not use the product in the zone where the wireless machines are forbidden, such as an airplane and a hospital. An electric device and medical apparatus are affected and it becomes the cause of the accident.

- About Qualification
 - Our company does not take any responsibility about the damage produced by use under the conditions such as natural disasters, earthquake, flood, fires, misuse by intent or carelessness or other than the responsibility of our company.
 - Our company does not take any responsibility about the damage produced by external factor, failure, malfunction, and fault of product, such as loss of enterprise profits, enterprise discontinuation, change and disappearance of the contents of memory etc.
 - Our company takes no responsibility about the damage produced by not keeping the written contents of an owner's manual.
 - Our company takes no responsibility about the damage produced from incorrect operation in combination with the connection apparatus and software in which our company is not participating etc.

-
-
- iBurst™ is a registered trademark of ArrayComm, Inc.
 - Mac OS X is a registered trademark of Apple Computer, Inc.
 - Windows is a registered trademark of Microsoft Corporation.
 - In addition, the name of the software carried in this document and peripheral equipment is each company's trademark, or a registered trademark.

- For your safety

----- **Danger** -----

(If used improperly, may cause death or serious injury.)

- Do not use with an abnormal condition, such as with emission of smoke or odor. It may cause fire or electric shock.
- Do not disassemble or remodel the product. It may cause fire or electrical shock.
- Do not use or place the product at places with high humidity such as in the bath room or near the humidifier. It may cause fire or electric shock. And do not touch the product with wet hands.

----- **Warning** -----

(If used improperly, may cause disability or physical damage.)

- Do not give a shock strong against the product, such as dropping and throwing. It becomes the cause of failure. Moreover, do not ride on the product. It may become the cause of an injury.
- Do not put the product under direct sunshine or near equipment with high temperature such as a stove and a heater. It may raise the temperature of the interior and cause fire.
- Do not put the product at places with an extreme fluctuation of temperature, such as near the air conditioner or a heater. The dew condensation may occur in the interior and cause fire, electrical shock, and malfunction.
- Do not put the product at places with oil and steams such as in the kitchen. In addition, do not put it at dusty places and places where metal powder and toxic gas occur. It may cause fire or electric shock.
- Do not place the product on unstable places such as on an unsteady desk or slanted surfaces. In addition, do not put any object on the product. It may lose balance and tumble, or fall and cause injury.
- When the thunder occurs in near, do not use the product and its peripheral equipment. It may become the cause of an electric shock.
- Do not touch the connector pins directly with your hands. Static electricity may affect the components. As static electricity is created from both the cloth and the human body, before putting or removing the product, release static electricity by touching a metal object such as a small cabinet.
- Do not use it in the intense place of vibration. It becomes the cause of failure.

----- **Caution** -----

(If treated improperly, the equipment may not perform or work properly.)

- Do not put the product at low temperature. The product may not function properly.
- Do not put the product on the top of magnetic objects and places where electromagnetic waves occur. This includes electrical appliances, AV, and OA (microwave oven, speaker, TV, radio, fluorescent light, inverter air conditioner, and electric kitchen appliances). The product will not be able to make communication properly if effected by magnetism or electronic noise. Putting the product near TV or radio may cause RF receive error.
- The product lifetime may shorten if used at places with hydrogen sulfide such as at a hot spring.
- Data communication will be disabled or a data file may corrupt if the PC is turned off or the product is separated from the PC during the communication. Important data must be verified against the original data.

Chapter 1

Introduction

This chapter describes what should be confirmed before using iBurst Modem.

Components List

The table below shows the list of components. Please confirm items in the package.

UTC model

Component	Notes	Q'ty
iBurst Modem	UTC model Refer to the pictures shown below.	1

Outlook of iBurst Modem

UTC model



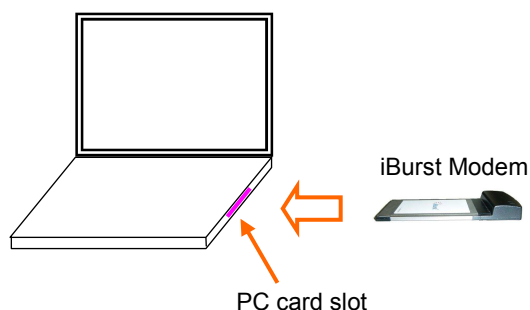
Requirements on your PC

- PC/AT Compatible PC with WindowsXP/2000/Me/98SE; or version 10.1.5 or later version of Mac OS X except Mac Intel model.
- PCMCIA Type II slot complied with the PC card standard 95 or later.

Outlook to use the iBurst Modem

A UTC model shall be plugged into a PC card slot of your PC. Before inserting it, you have to install iBurst software which includes device drivers. Please read through every sections related with the operating system for details.

Insertion of iBurst Modem



Indicators

The table below describes meaning of each indicator.

Indicator	State	Meaning
Power Indicator	OFF	Turned OFF
	Blue	Turned ON
	Red	Fault
Link/Communication Indicator	OFF	Turned OFF
	Amber	No signal receiving
	Yellow	Weak signal receiving Blinking when communicating.
	Green	Strong signal receiving Blinking when communicating.

Chapter 2

Setup Procedure

This chapter describes how to install iBurst software, then guides you how to make a network connection so as to use data communication service.

iBurst Software Installation

This section shows the procedure to install iBurst software on your PC for utilizing iBurst Modem. The procedure shall be done once before using it.

Installation for Windows XP

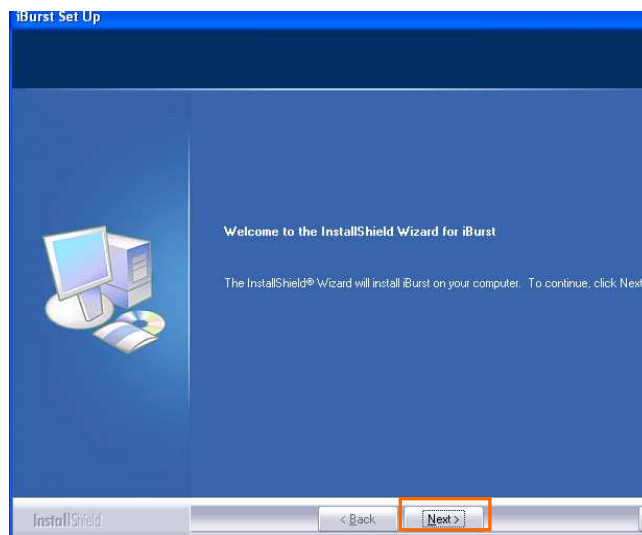
ATTENTION: Don't choose "PCIC Compatible" mode of PC card controller in BIOS menu if your PC has such menu. Please choose "Auto-Selected" or "CardBus/16bit" if BIOS has it. There is a case that some models of PCs cannot drive iBurst Modem due to BIOS or PC card driver problem.

1. Make sure to remove the iBurst Modem from your PC.

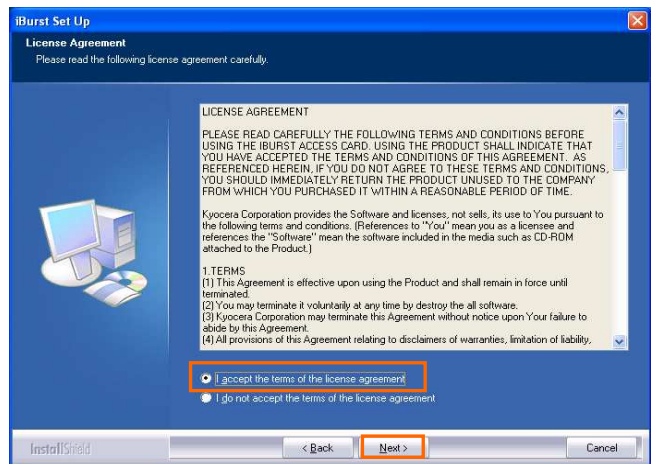
ATTENTION:

Don't plug the iBurst Modem into your PC until completion of installation.

2. Turn your PC on.
3. Insert the Software Utility CD provided by the network operator into your CD-ROM drive; or execute the appropriate installation software.
4. iBurst Setup starts. Click the [Next >] button.

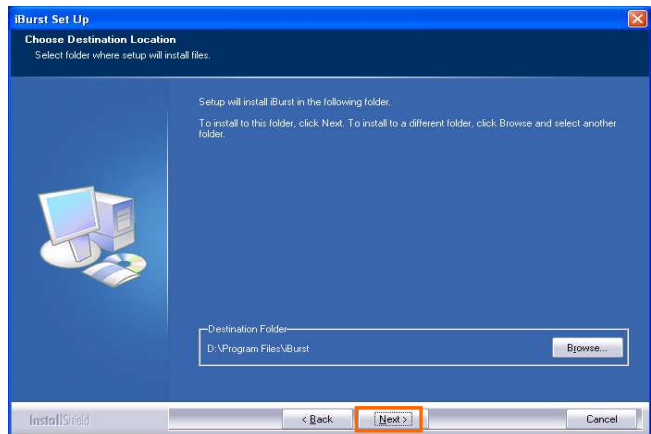


5. Select [I accept the terms the license agreement], click the [Next >] button.

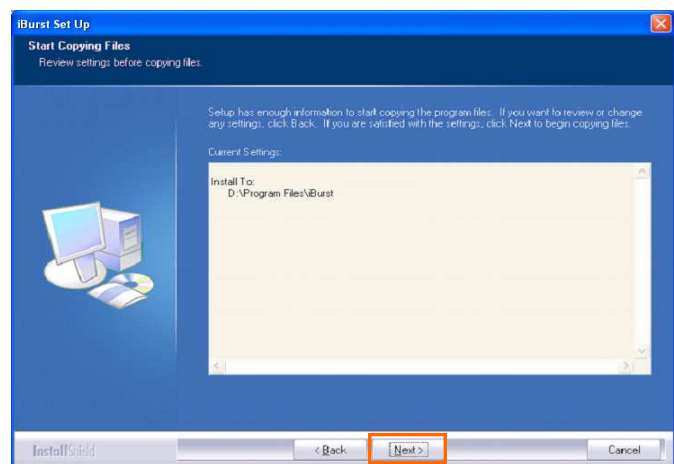


6. Click the [Next >] button after appearing dialog window as shown below.

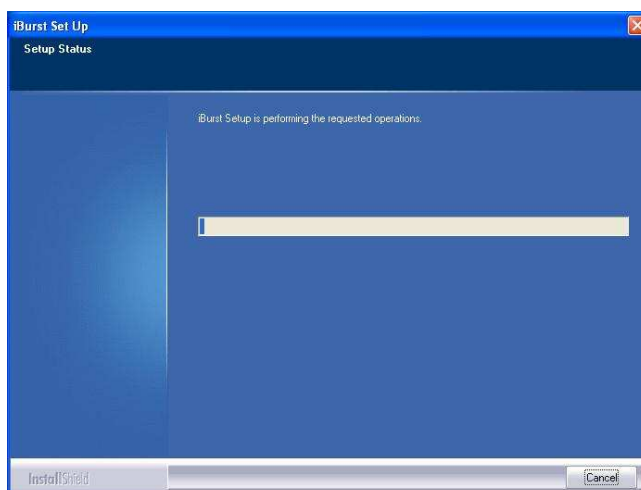
NOTE: To install to a different folder, click [Browse...] and specify another folder.



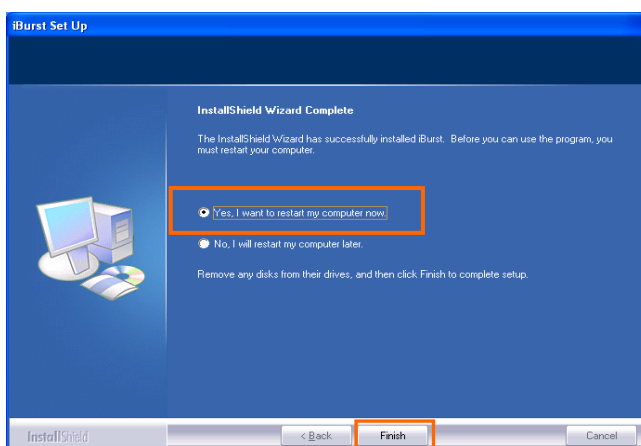
7. Click the [Next >] button.



8. The following dialog window will appear, and installation of software begins.



9. When the installing process finishes, the dialog window shown below will appear. Select “Yes, I want to restart my computer now” and click the [Finish] button in the dialog window.



10. After finish of restarting, plug the iBurst Modem into a PC card slot of your PC.

The iBurst Modem will be recognized and will be ready to use automatically.

NOTE: If the PC request to restart again, click [Yes] to restart the PC.

NOTE: To connect to the Internet, refer to page 59.

Installation for Windows 2000

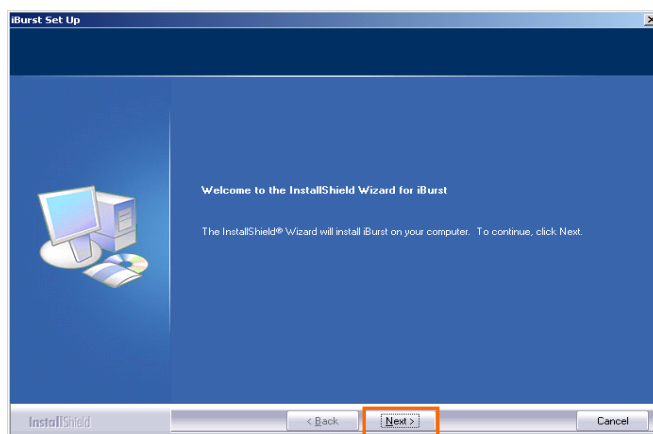
ATTENTION: Don't choose "PCIC Compatible" mode of PC card controller in BIOS menu if your PC has such menu. Please choose "Auto-Selected" or "CardBus/16bit" if BIOS has it. There is a case that some models of PCs cannot drive iBurst Modem due to BIOS or PC card driver problem.

1. Make sure to remove the iBurst Modem from your PC.

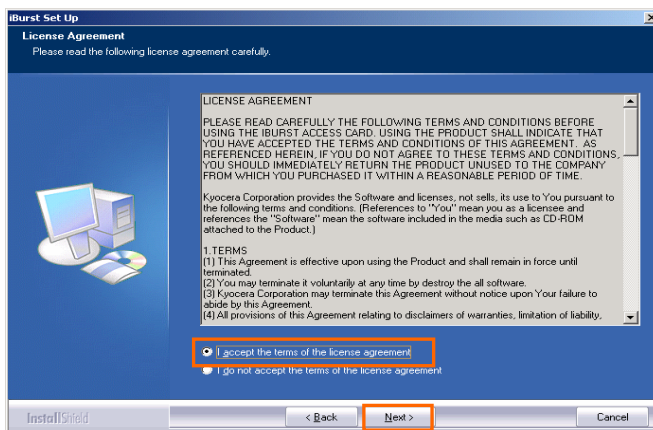
ATTENTION:

Don't plug the iBurst Modem into your PC until completion of installation.

2. Turn your PC on.
3. Insert the Software Utility CD provided by the network operator into your CD-ROM drive; or execute the appropriate installation software.
4. iBurst Setup starts. Click the [Next >] button.

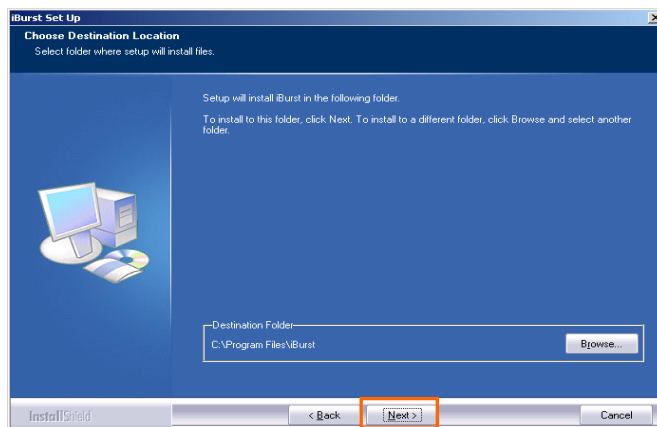


5. Select [I accept the terms the license agreement], click the [Next >] button.

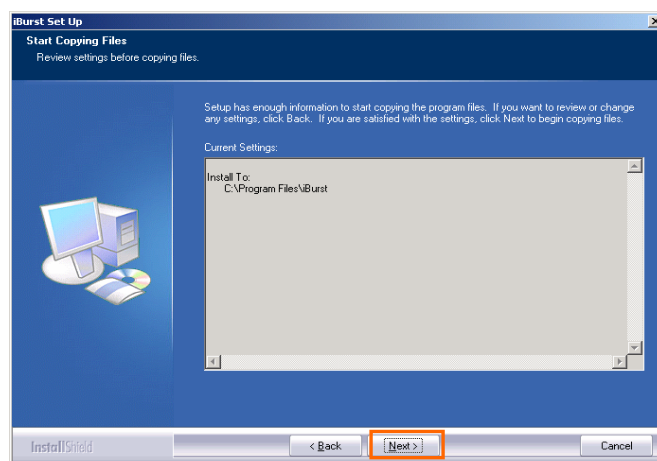


6. Click the [Next >] button after appearing dialog window as shown below.

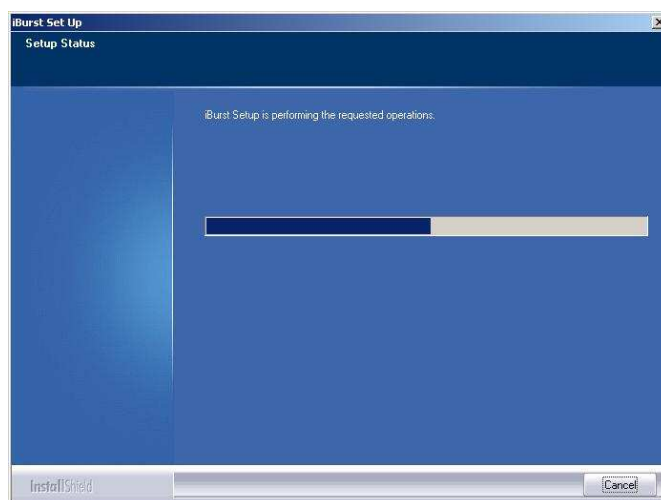
NOTE: To install to a different folder, click [Browse...] and specify another folder.



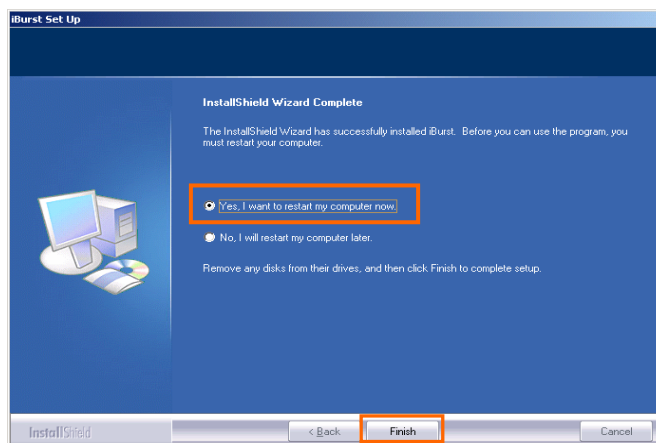
7. Click the [Next >] button.



8. The following dialog window will appear, and installation of software begins.



9. When the installing process finishes, the dialog window shown below will appear. Select **[Yes, I want to restart my computer now]** and click the **[Finish]** button in the dialog window.



10. After finish of restarting, **plug the iBurst Modem into a PC card slot of your PC.**

The iBurst Modem will be recognized and will be ready to use automatically.

NOTE: If the PC request to restart again, click **[Yes]** to restart the PC.

NOTE: To connect to the Internet, refer to page 64.

Installation for Windows Me

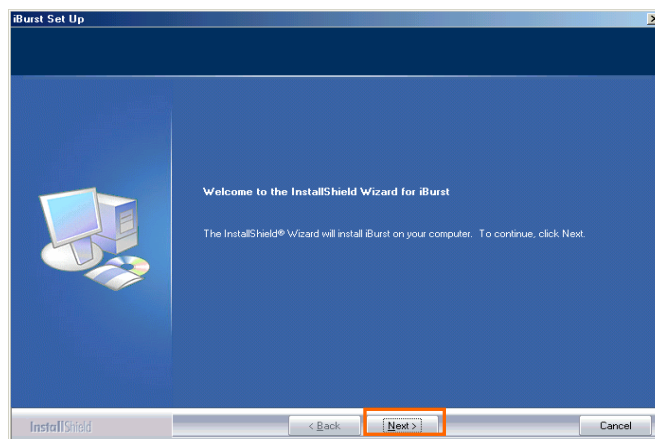
ATTENTION: Don't choose "PCIC Compatible" mode of PC card controller in BIOS menu if your PC has such menu. Please choose "Auto-Selected" or "CardBus/16bit" if BIOS has it. There is a case that some models of PCs cannot drive iBurst Modem due to BIOS or PC card driver problem.

Since the installation disk of Windows Me may be required while driver installation, please prepare the CD or copy the CD into a hard disk in your PC for it.

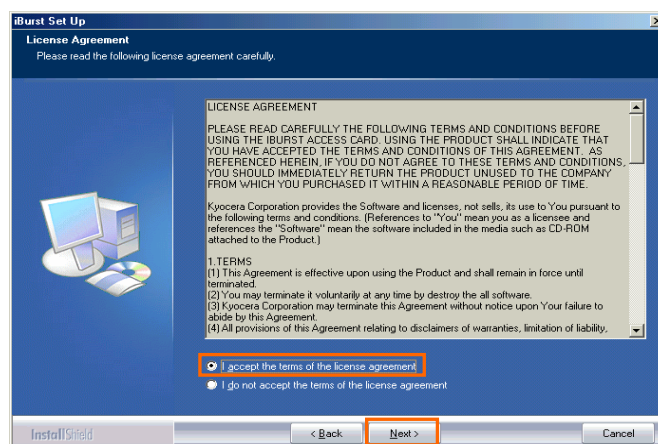
1. Make sure to remove the iBurst Modem from your PC.

ATTENTION: Don't plug the iBurst Modem into your PC until completion of installation.

2. Turn your PC on.
3. Insert the Software Utility CD provided by the network operator into your CD-ROM drive; or execute the appropriate installation software.
4. iBurst Setup starts. Click the [Next >] button.

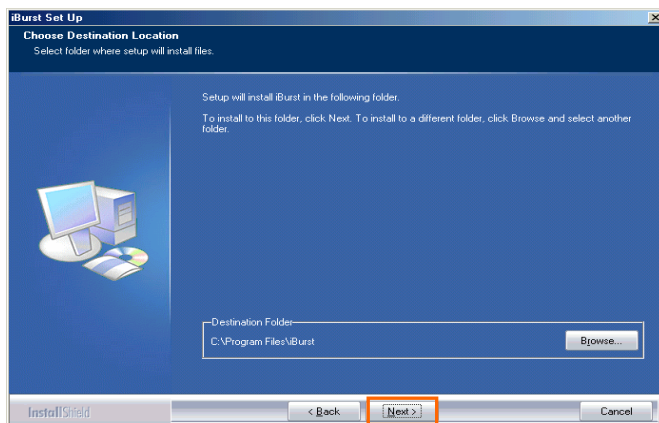


5. Select [I accept the terms the license agreement], click the [Next >] button.

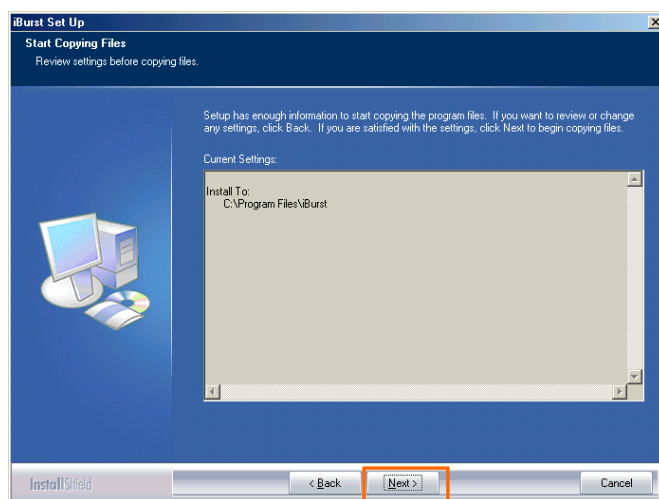


6. Click the [Next >] button after appearing dialog window as shown below.

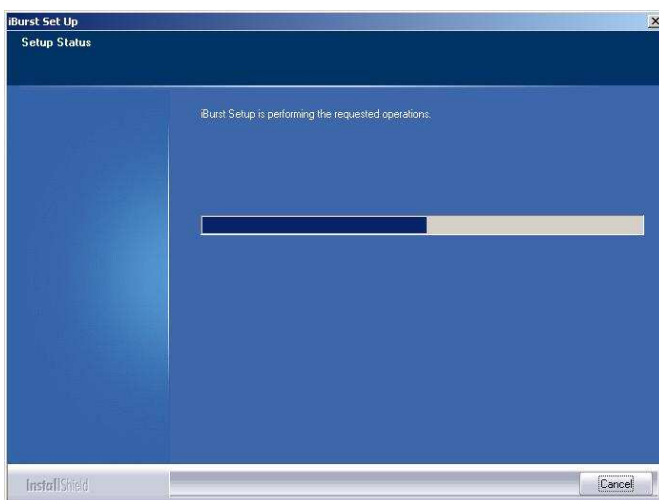
NOTE: To install to a different folder, click [Browse...] and specify another folder.



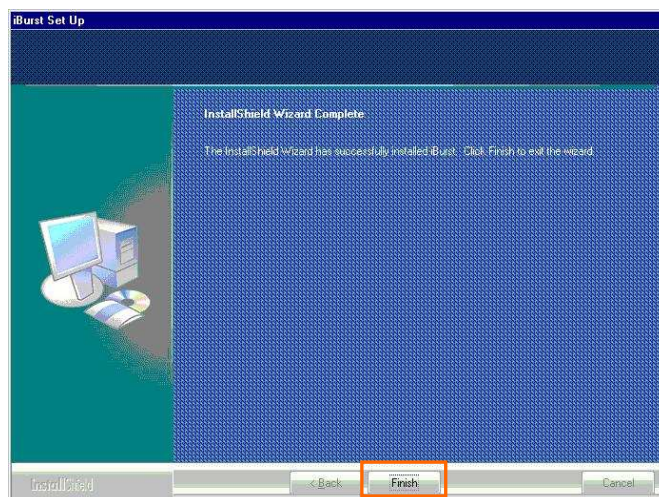
7. Click the [Next >] button.



8. The following dialog window will appear, and installation of software begins.



9. Click the **Finish** button.

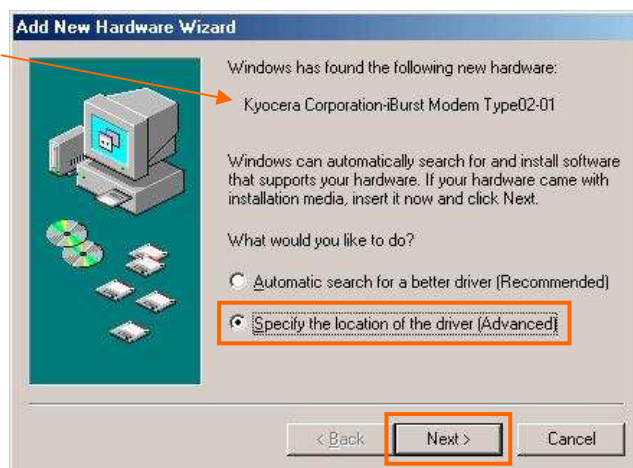


10. Plug the iBurst Modem into a PC card slot of your PC.

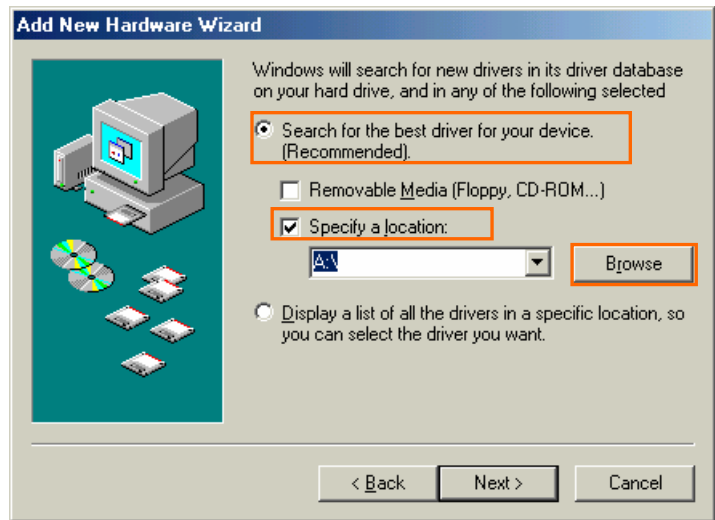
Windows will detect the iBurst Modem as a new hardware so that **Add New Hardware Wizard** will begin.

11. Confirm the device name indicated shall be **iBurst Modem** or **iBurst Modem Type 02-01**. Select **Specify the location of the driver (Advanced)** and click the **Next >** button in the dialog window.

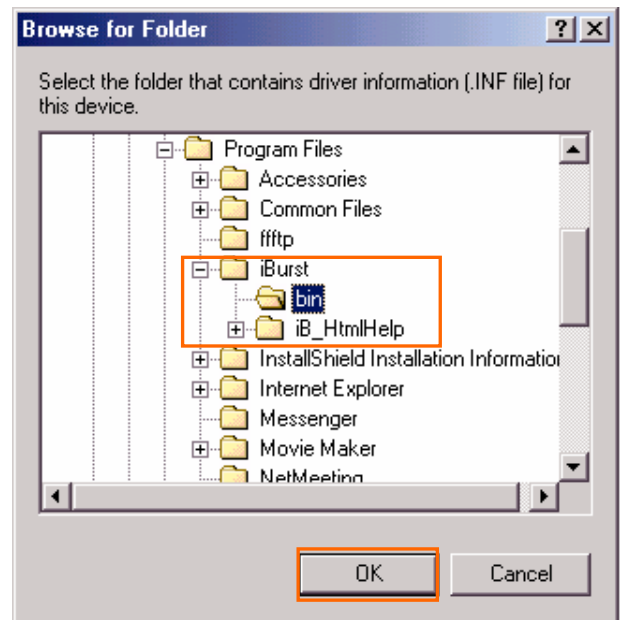
The device name detected shall be;
"Kyocera Corporation-iBurst Modem" or
"Kyocera Corporation-iBurst Modem Type 02-01".



12. Select [Search for the best driver for your device.(Recommended)], then check [Specify a location] and click the [Browse] button.



13. Select [C:\Program Files\iBurst\bin], and click the [OK] button.



14. Click the [Next >] button.

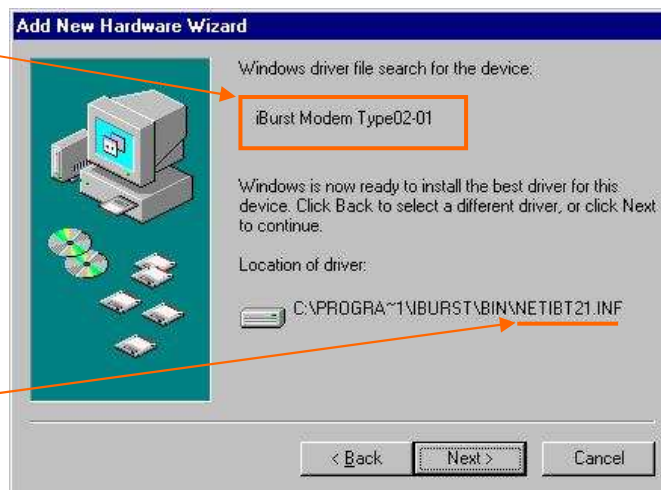


15. Confirm the driver file name indicated shall be [NETIBST.INF] or [NETIBT21.INF].

Click the [Next >] button.

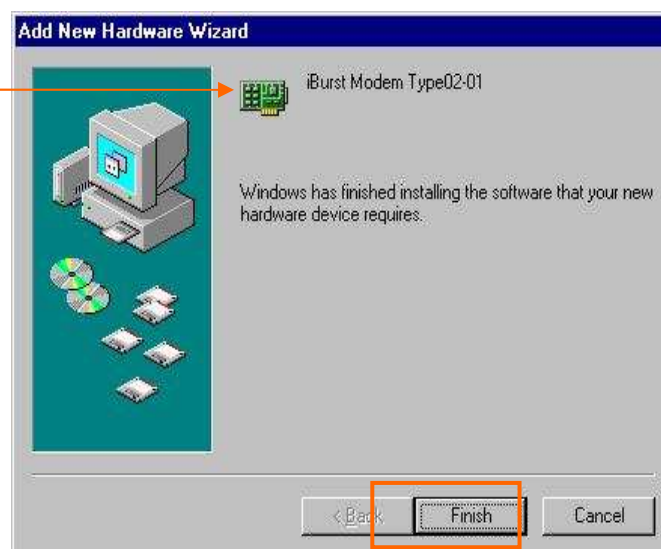
The device name detected shall be; "iBurst Modem" or "iBurst Modem Type 02-01".

The driver file name shall be; "NETIBST.INF" or "NETIBT21.INF".

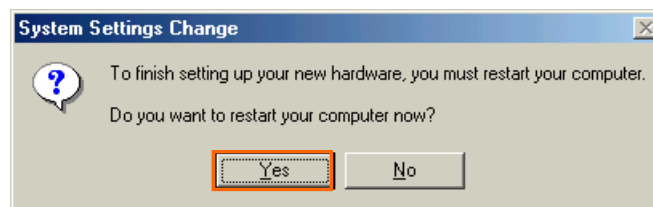


16. Click the [Finish] button.

The name of the network adaptor shall be; "iBurst Modem" or "iBurst Modem Type 02-01".



17. The dialog window shown below will appear, click the [Yes] button, and restart your PC.

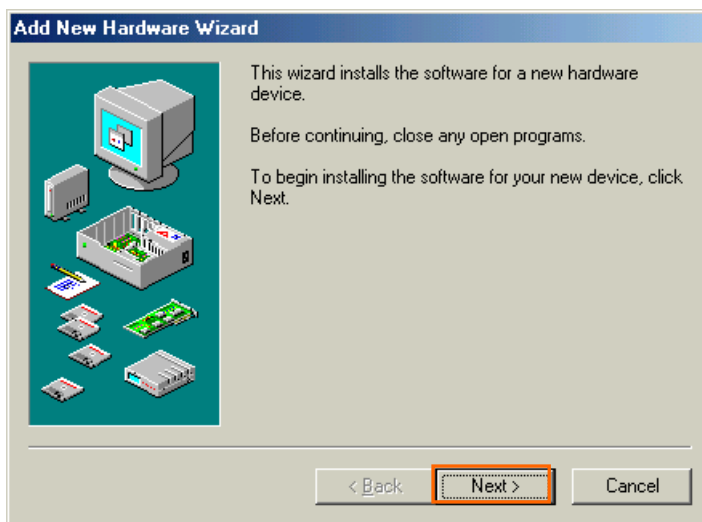


NOTE: If the PC doesn't shutdown itself, try to press Alt+Ctrl+Del keys several times.

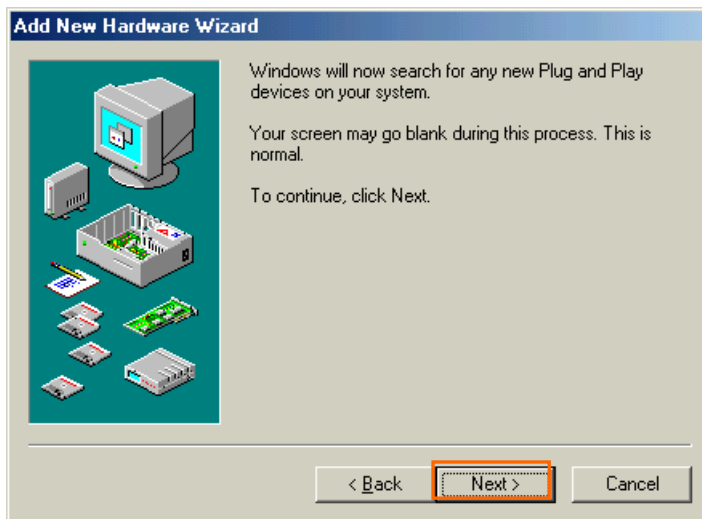
18. Click the [Start] -> [Settings] -> [Control Panel] to open Control Panel as shown below, and then double click [Add New Hardware].



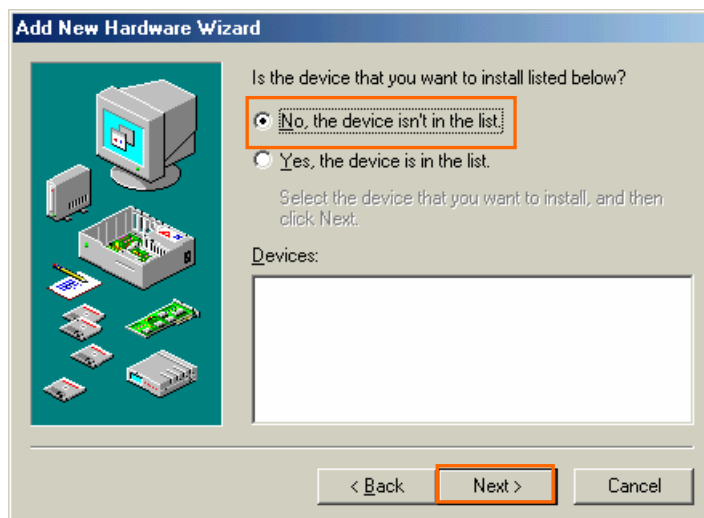
19. Click the [Next >] button.



20. Click the [Next >] button.



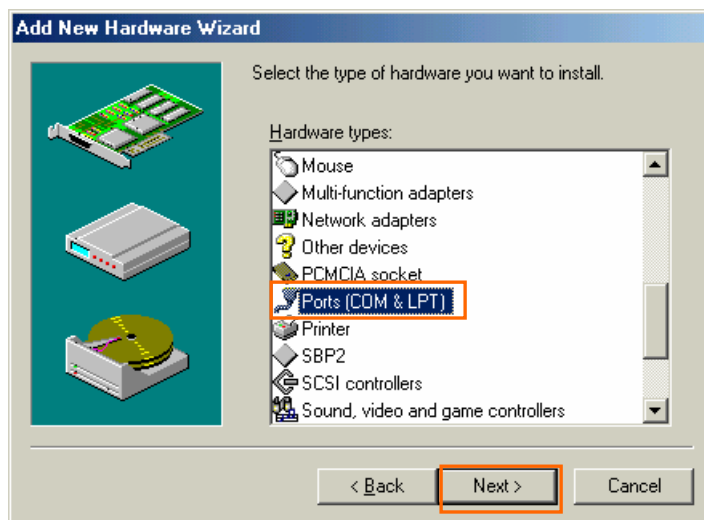
NOTE: If the dialog window shown below appears, select [No, the device isn't in the list] and click the [Next >] button.



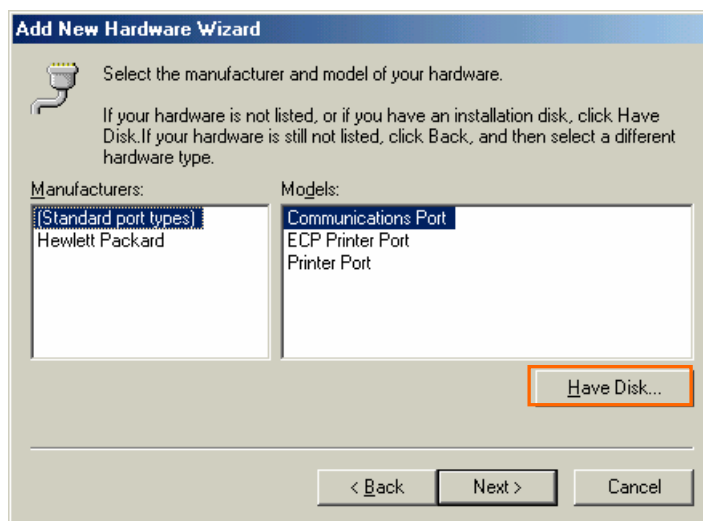
21. Select [No, I want to select the hardware from a list], and click the [Next >] button.



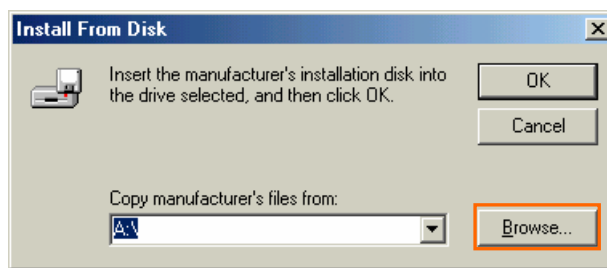
22. Select [Ports (COM & LPT)], and click the [Next >] button.



23. Click the **[Have Disk..]** button.

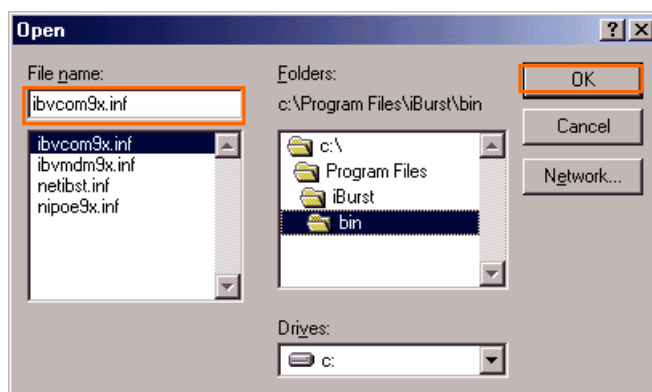


24. Click the **[Browse...]** button.

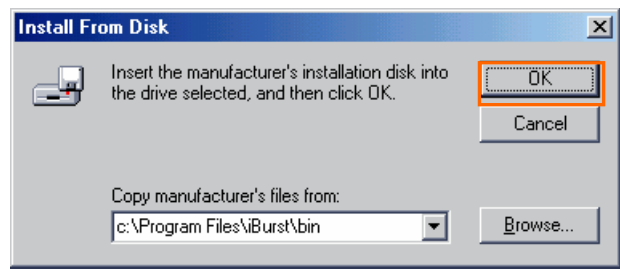


25. Select **[C:\Program Files\iBurst\bin]**, and click the **[OK]** button.

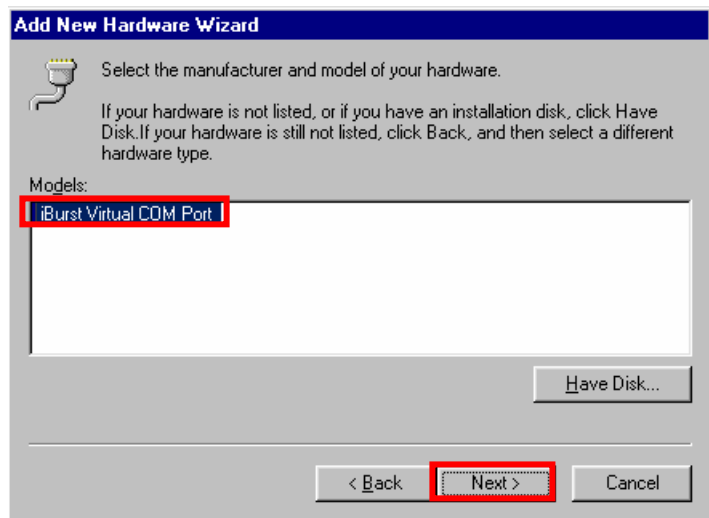
NOTE: You don't have to select a file name. Windows will find an appropriate file automatically.



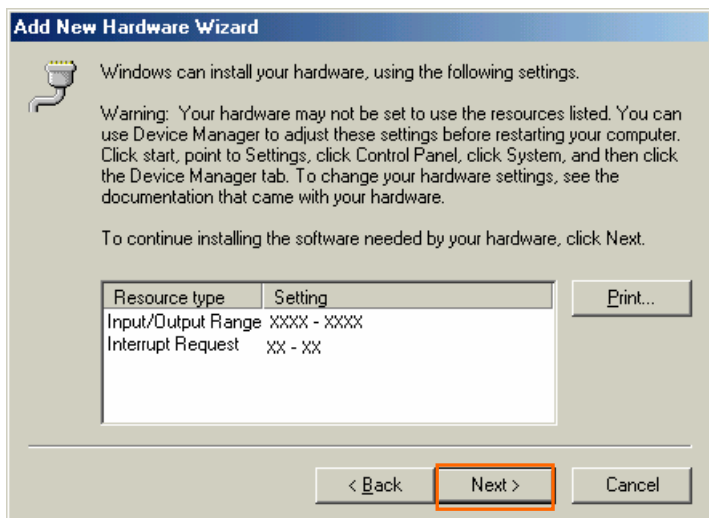
26. Click the **[OK]** button.



27. Select **[iBurst Virtual COM Port]**, and click the **[Next >]** button.



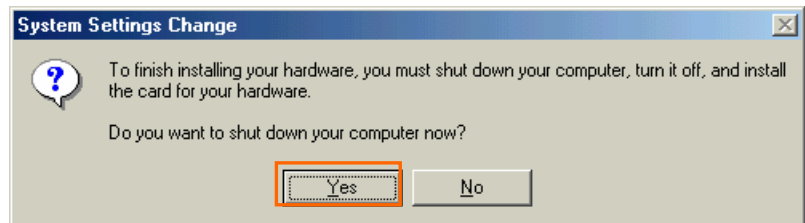
28. Click the **[Next >]** button.



29. Click the **Finish** button.



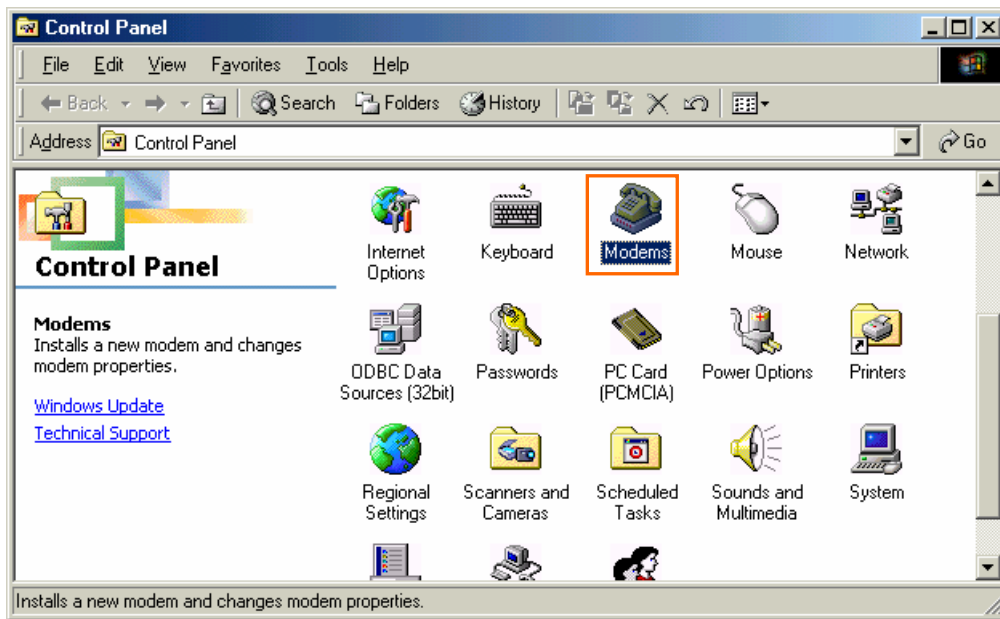
30. The dialog window shown below will appear, click the **Yes** button to **SHUTDOWN** your PC.



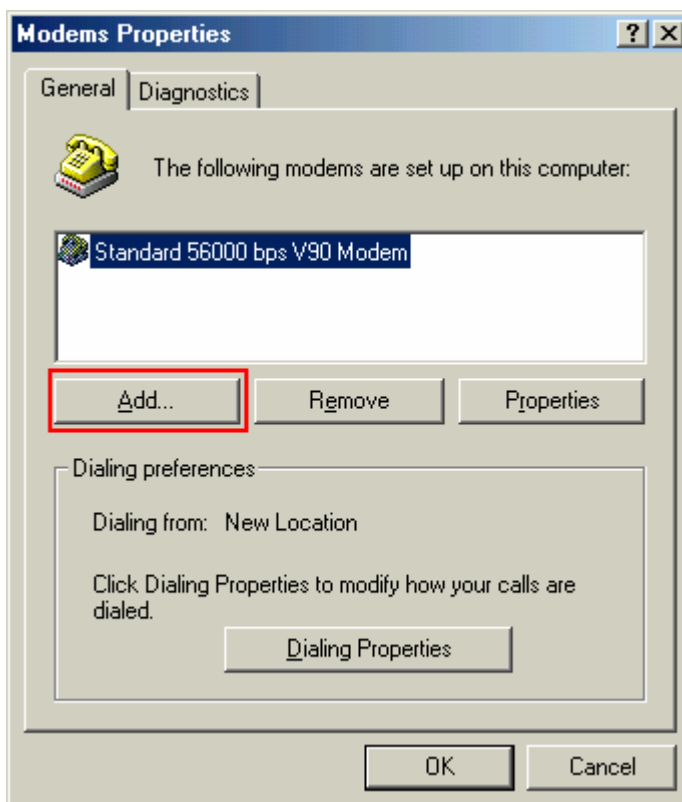
NOTE: If the PC doesn't shutdown itself, try to press Alt+Ctrl+Del keys several times.

31. Turn your PC on again.

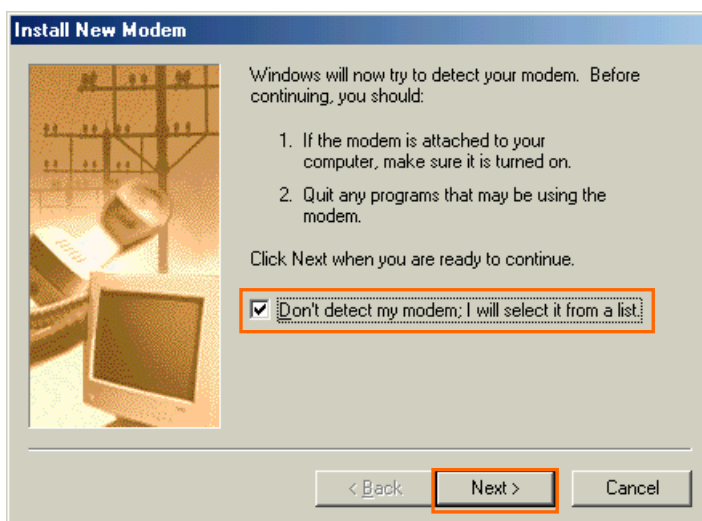
32. Click the [Start] -> [Settings] -> [Control Panel] to open Control Panel as shown below, and then double click [Modems].



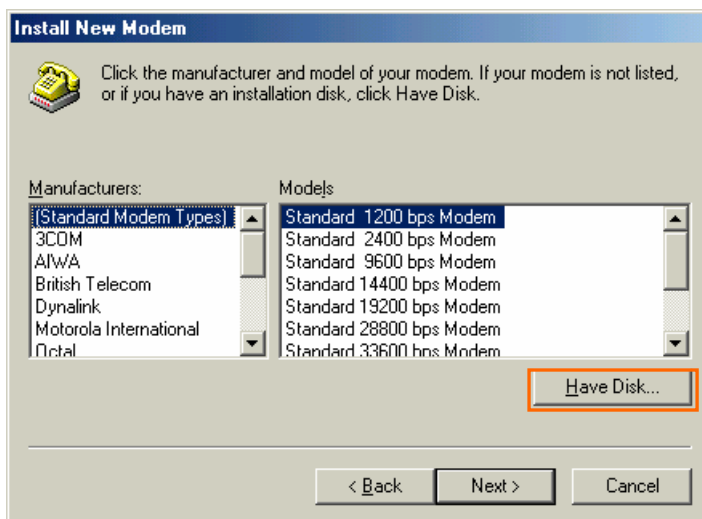
NOTE: If the dialog window as shown below appears, click the [Add] button.



33. Check [Don't detect my modem; I will select it from a list], and click the [Next >] button.



34. Click the [Have Disk...] button.

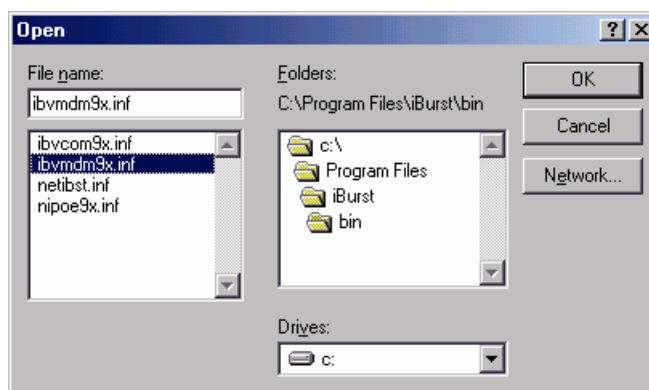


35. Click the [Browse...] button.



36. Select [C:\Program Files\iBurst\bin], and click the [OK] button.

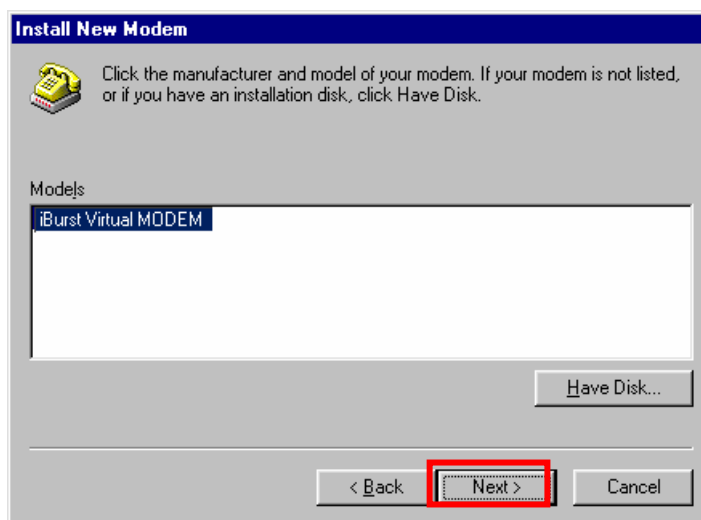
NOTE: You don't have to select a file name. Windows will find an appropriate file automatically.



37. Click the [OK] button.

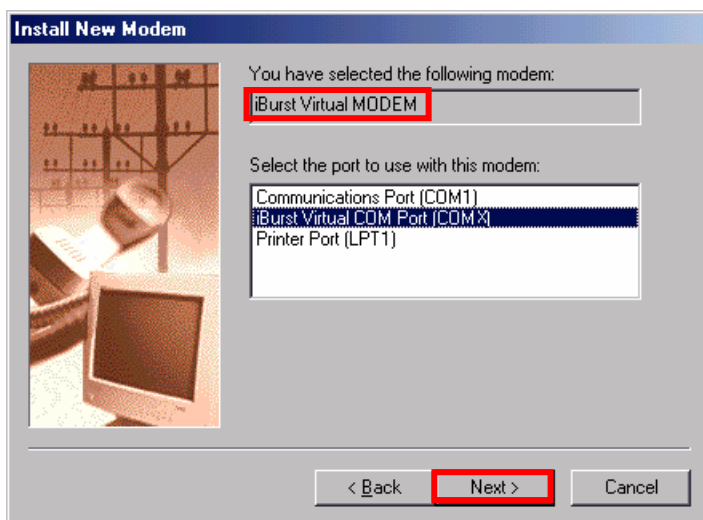


38. Select [iBurst Virtual MODEM], and click the [Next >] button.

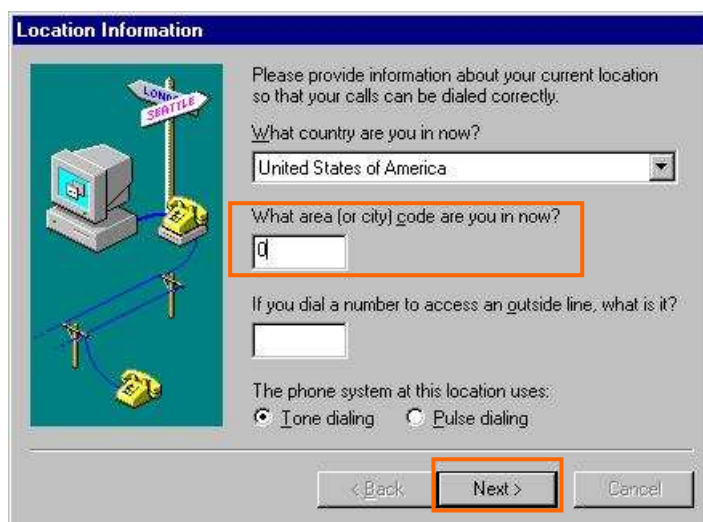


39. Select [iBurst Virtual COM Port (COM X)], and click the [Next >] button.

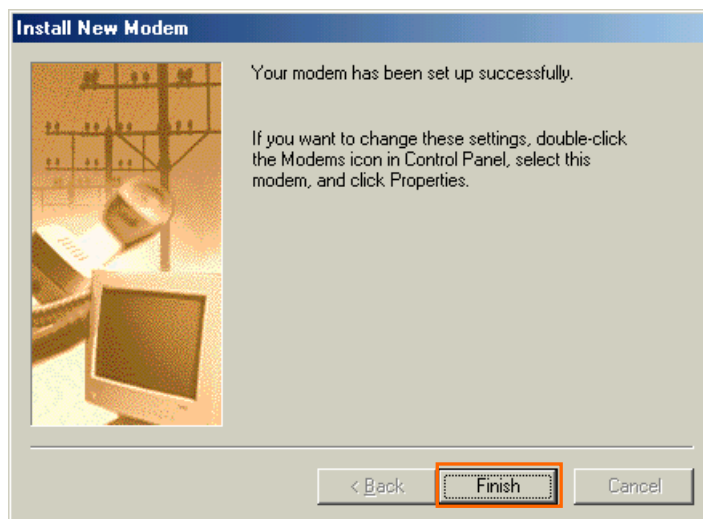
NOTE: The 'X' in "COM X" above is a COM port number assigned automatically.



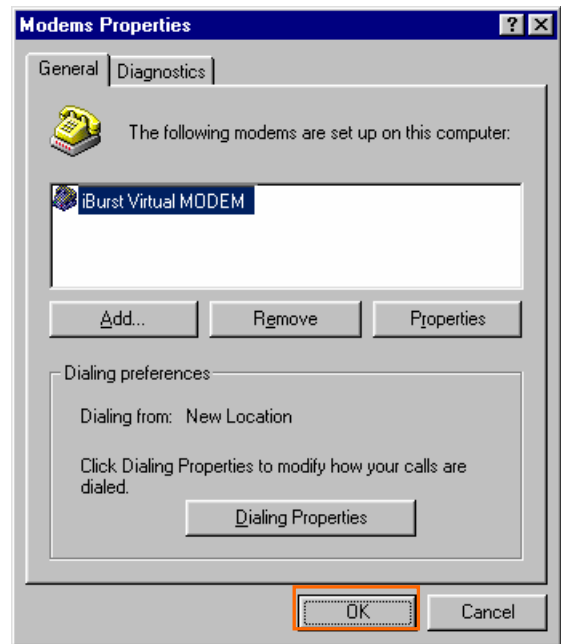
NOTE: If the dialog window as shown below appears, type a dummy number in "What are (or city) code are you in now ?" and then click the [Next >] button.



40. Click the [Finish] button.



41. Click the [OK] button.

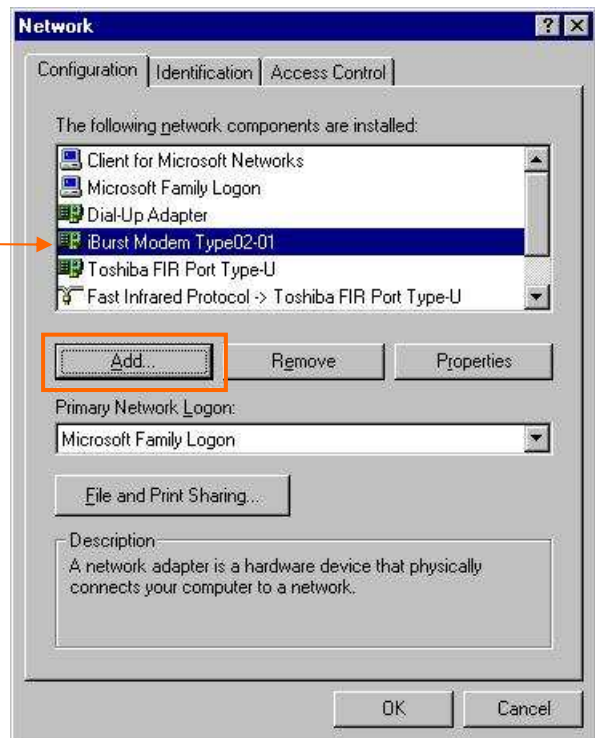


42. Click the [Start] -> [Settings] -> [Control Panel] to open Control Panel as shown below, and then double click [Network].

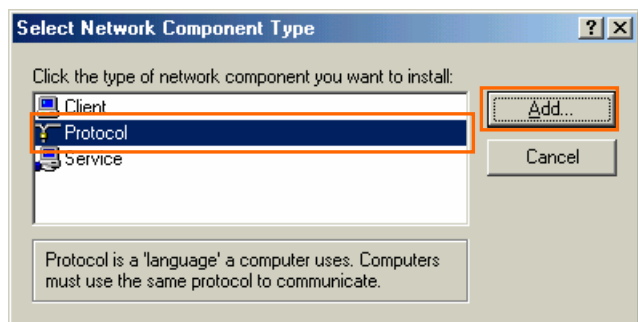


43. Click the **[Add...]** button on **[Configuration]** tab.

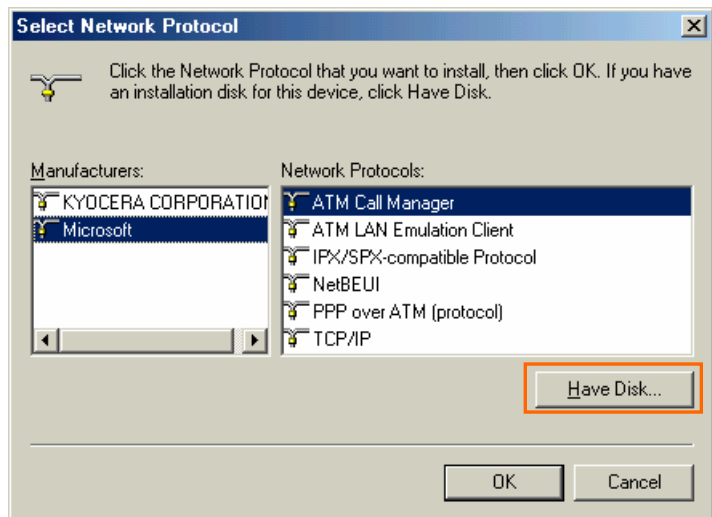
The name of a network adaptor shall be; "iBurst Modem" or "iBurst Modem Type 02-01".



44. Select **[Protocol]** and click the **[Add...]** button.



45. Click the **[Have Disk...]** button.

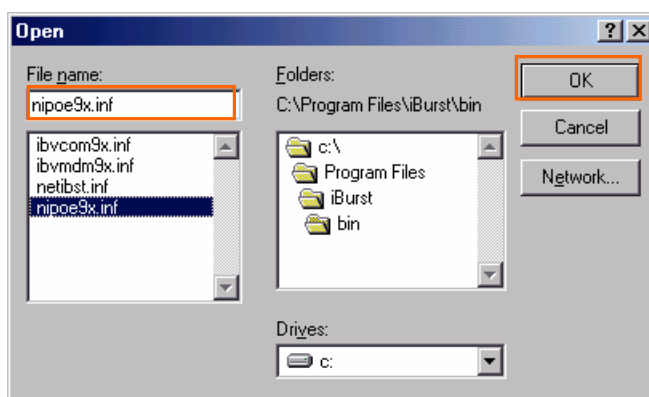


46. Click the **[Browse...]** button.

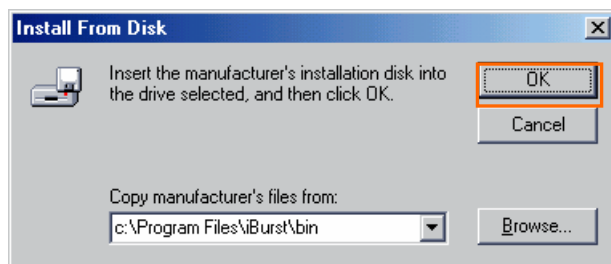


47. Select **[C:\Program Files\iBurst\bin]**, and click the **[OK]** button.

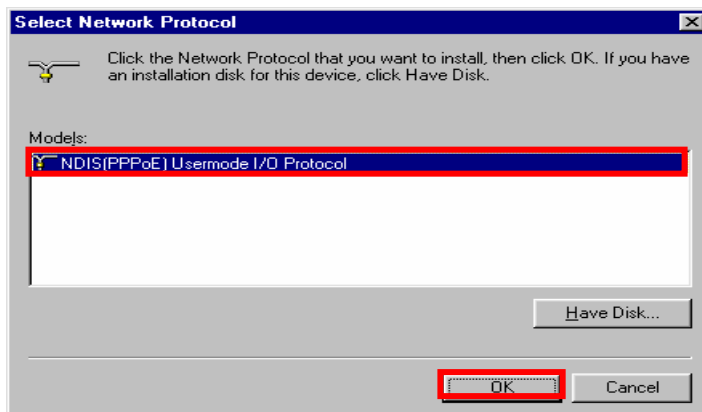
NOTE: You don't have to select a file name. Windows will find an appropriate file automatically.



48. Click the **[OK]** button.



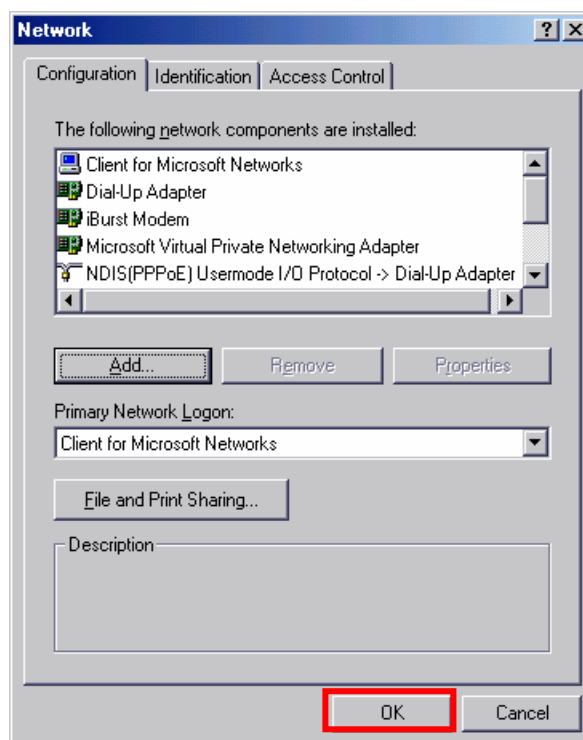
49. Select **[NDIS(PPPoE) Usermode I/O Protocol]**, click the **[OK]** button.



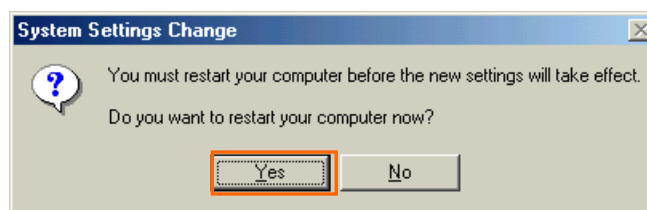
NOTE: If the same dialog at step 45 is popped up again, cancel once and repeat from step 43.

50. Click the **[OK]** button.

NOTE: One of the protocols added shall be;
“NDIS(PPPoE) User mode I/O Protocol -> iBurst Modem”; or
“NDIS(PPPoE) User mode I/O Protocol -> iBurst Modem Type 02-01”.



51. The dialog window shown below will appear, click the **[Yes]** button, and restart your PC.



NOTE: If the PC doesn't shutdown itself, try to press Alt+Ctrl+Del keys several times.

NOTE: To connect to the Internet, refer to page 64.

Installation for Windows 98SE

ATTENTION: Don't choose "PCIC Compatible" mode of PC card controller in BIOS menu if your PC has such menu. Please choose "Auto-Selected" or "CardBus/16bit" if BIOS has it. There is a case that some models of PCs cannot drive iBurst Modem due to BIOS or PC card driver problem.

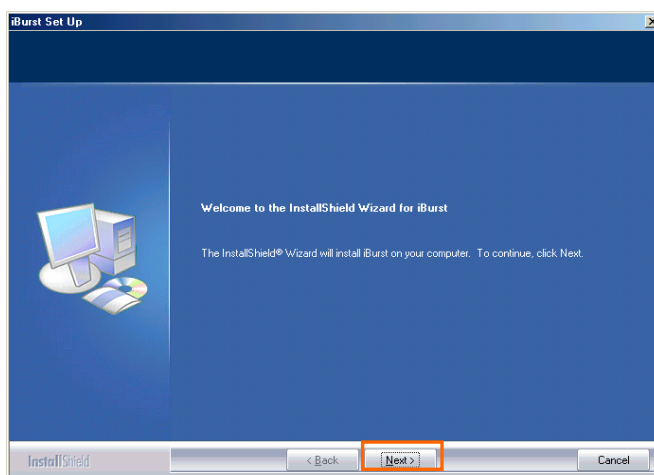
Since the installation disk of WINDOWS 98SE may be required while driver installation, please prepare the CD or copy the CD into a hard disk in your PC for it.

1. Make sure to remove the iBurst Modem from your PC.

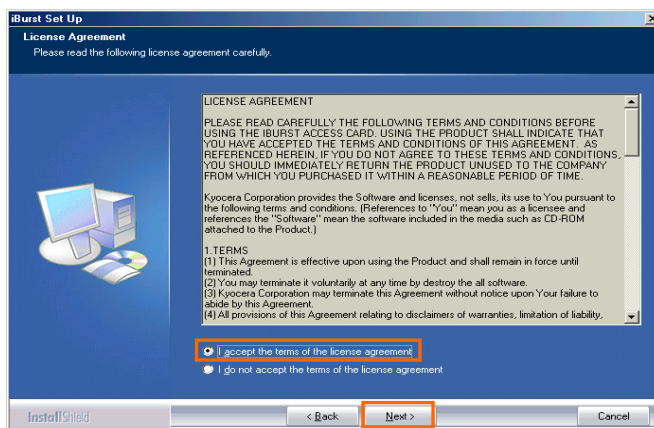
ATTENTION:

Don't plug the iBurst Modem into your PC until completion of installation.

2. Turn your PC on.
3. Insert the Software Utility CD provided by the network operator into your CD-ROM drive; or execute the appropriate installation software.
4. iBurst Setup starts. Click the [Next >] button.

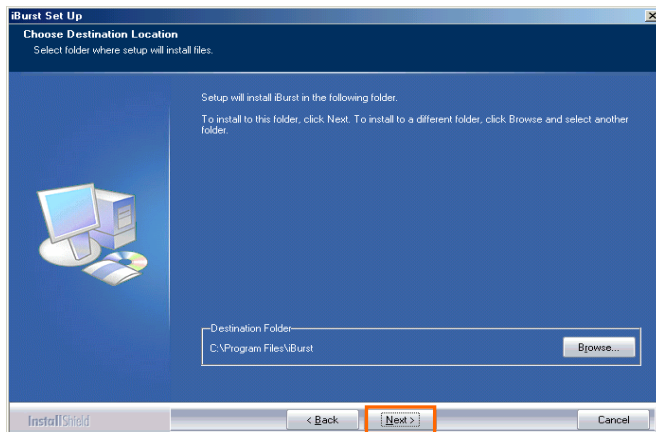


5. Select [I accept the terms the license agreement], click the [Next >] button.

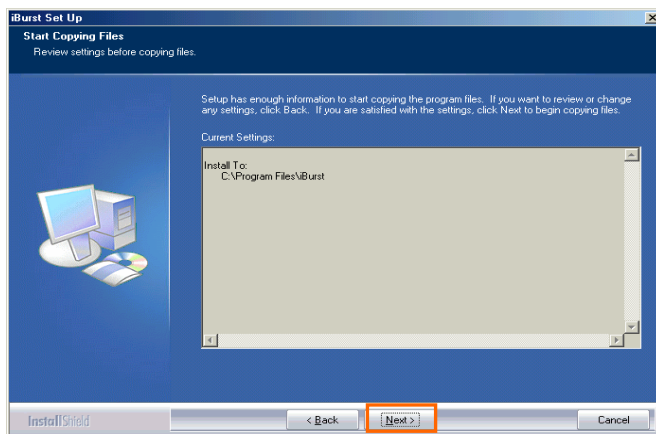


6. Click the [Next >] button after appearing dialog window as shown below.

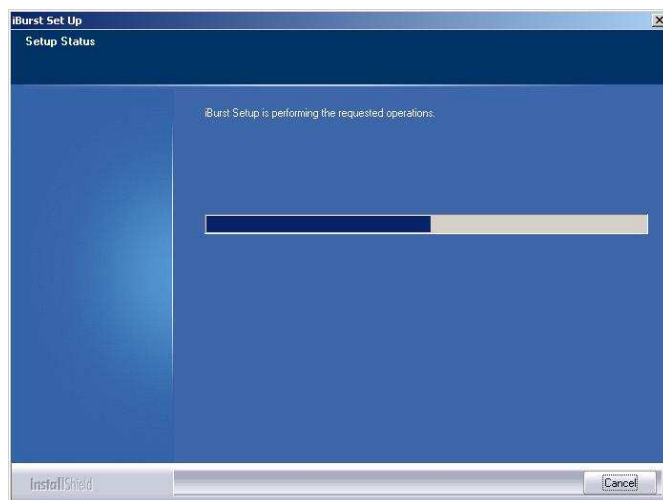
NOTE: To install to a different folder, click [Browse...] and specify another folder.



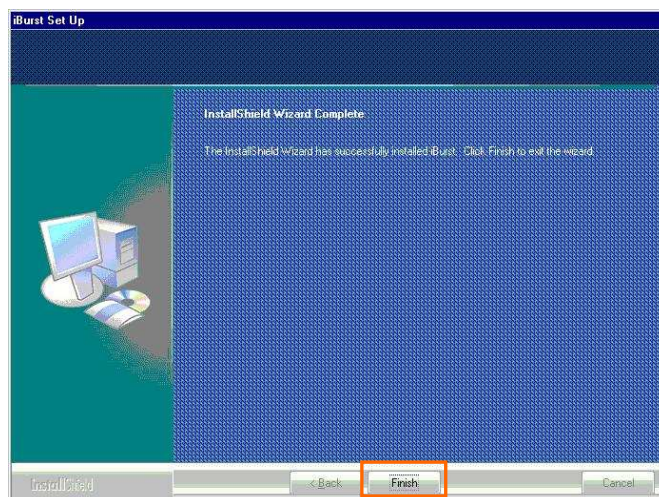
7. Click the [Next >] button.



8. The following dialog window will appear, and installation of software begins.



9. Click the **Finish** button.

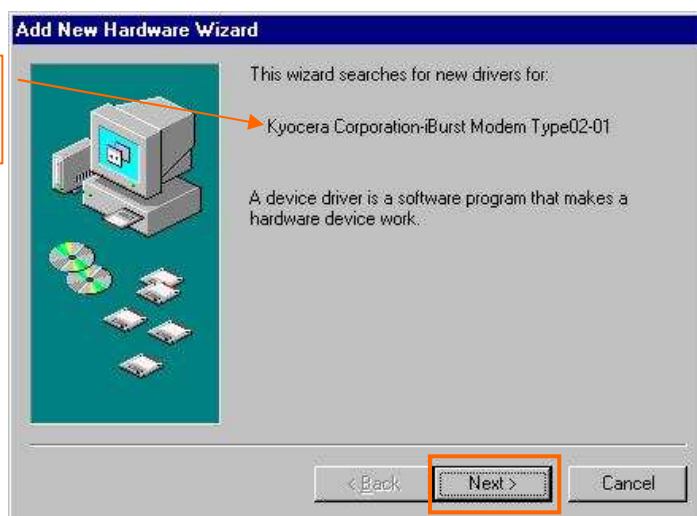


10. Plug the iBurst Modem into a PC card slot of your PC.

Windows will detect the iBurst Modem as a new hardware so that **Add New Hardware Wizard** will begin.

11. Confirm the device name indicated shall be **iBurst Modem** or **iBurst Modem Type 02-01**.
Click the **Next >** button.

The device name detected shall be;
"Kyocera Corporation-iBurst Modem" or
"Kyocera Corporation-iBurst Modem Type 02-01".



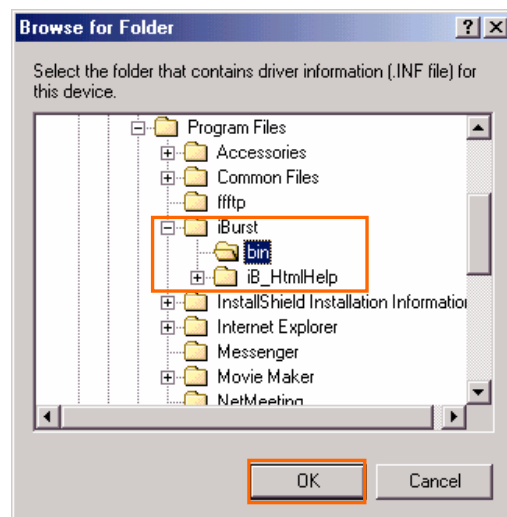
12. Select [Search for the best driver for your device.(Recommended)], and then check the [Next >] button.



13. Check [Specify a location] and click the [Browse] button.



14. Select [C:\Program Files\iBurst\bin], and click the [OK] button.



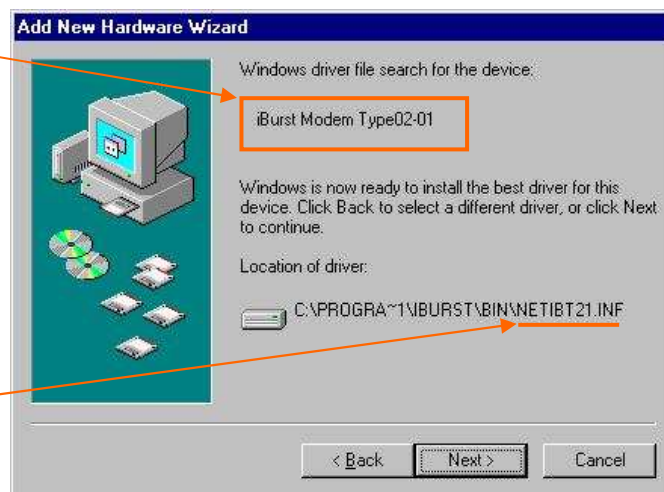
15. Click the [Next >] button.



16. Confirm the driver file name indicated shall be [NETIBST.INF] or [NETIBT21.INF].
Click the [Next >] button.

The device name detected shall be; "iBurst Modem" or "iBurst Modem Type 02-01".

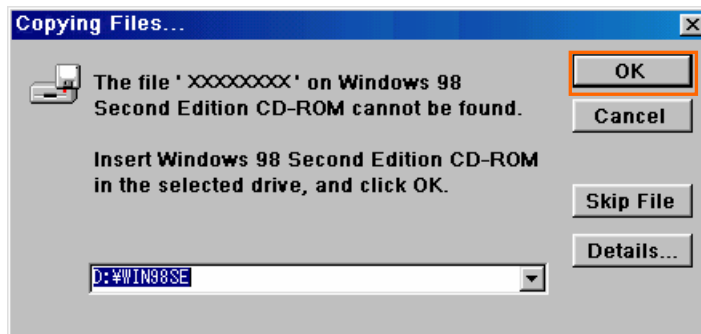
The driver file name shall be; "NETIBST.INF" or "NETIBT21.INF".



NOTE: If the dialog window as shown below appears, insert [Windows 98SE CD-ROM] into the CD-ROM drive and click the [OK] button.



NOTE: If the dialog window as shown below appears, insert [Windows 98SE CD-ROM] into your PC and enter the directory of your [Windows 98SE CD-ROM], click the [OK] button. “xxxxxxx” in the picture below is a file name that can not be found.



17. Click the [Finish] button.

The name of the network adaptor shall be; “iBurst Modem” or “iBurst Modem Type 02-01”.

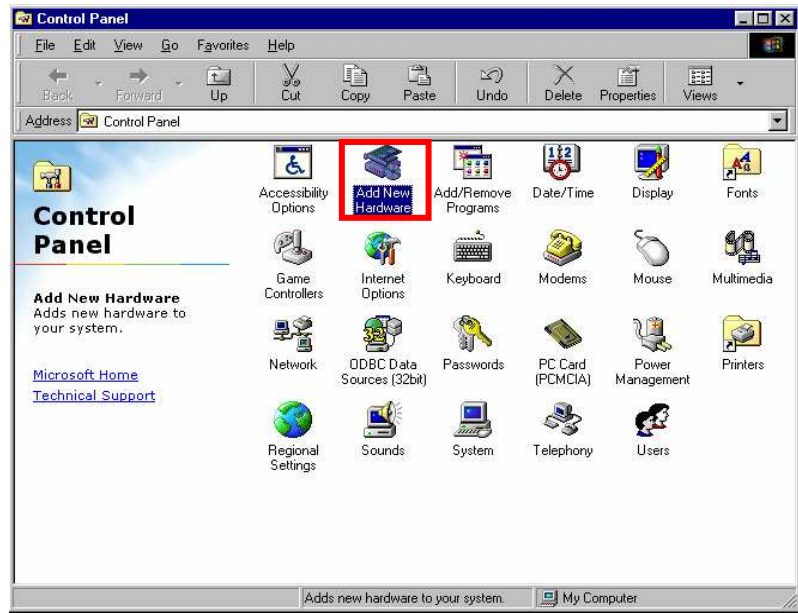


18. The dialog window shown below will appear, click the [Yes] button, and restart your PC.

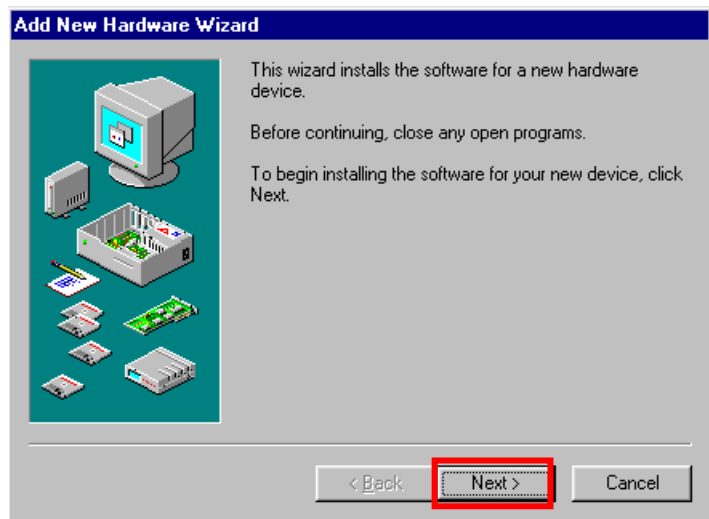


NOTE: If the PC doesn't shutdown itself, try to press Alt+Ctrl+Del keys several times.

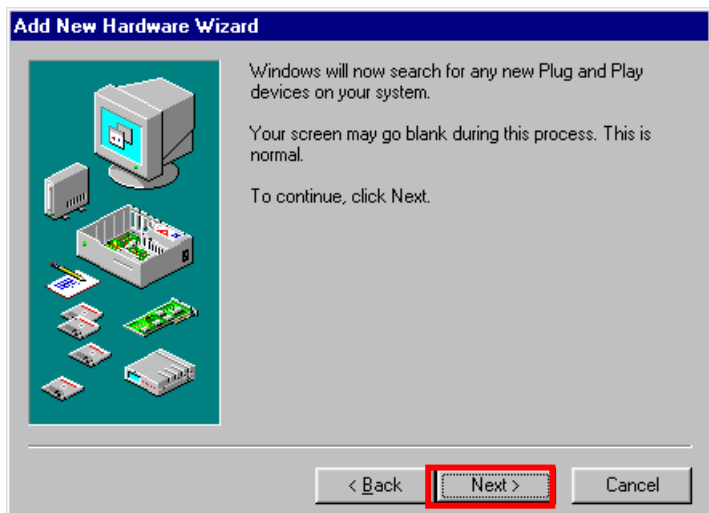
19. Click the [Start] -> [Settings] -> [Control Panel] to open Control Panel as shown below, and then double click [Add New Hardware].



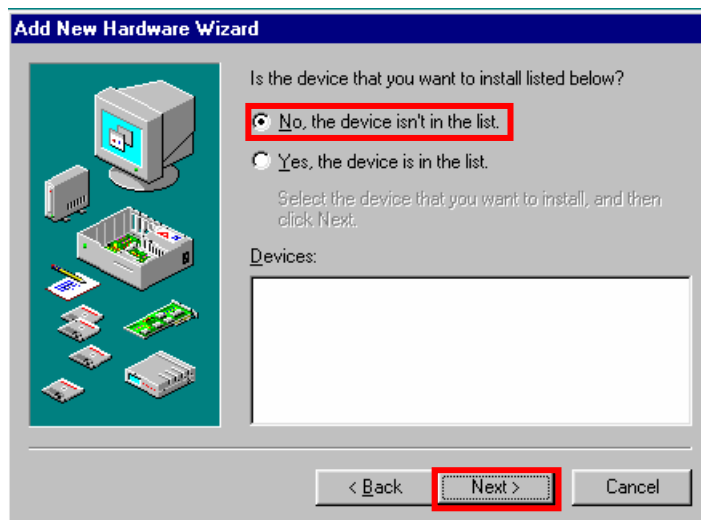
20. Click the [Next >] button.



21. Click the [Next >] button.



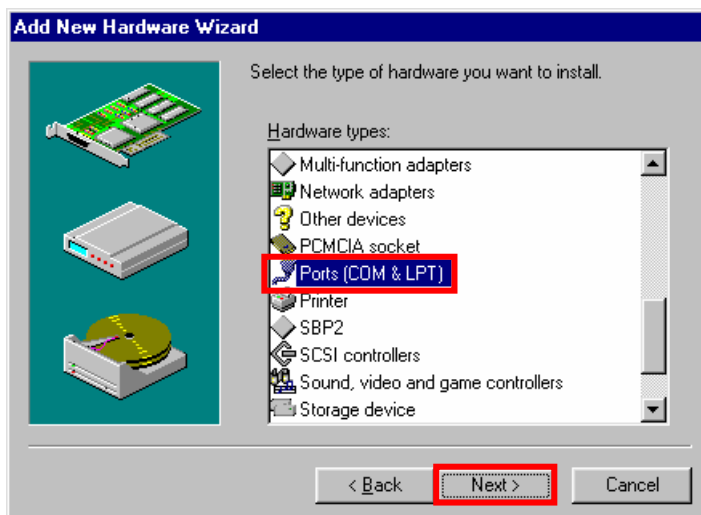
NOTE: If the dialog window as shown below appears, select [No, the device isn't in the list] and click the [Next >] button.



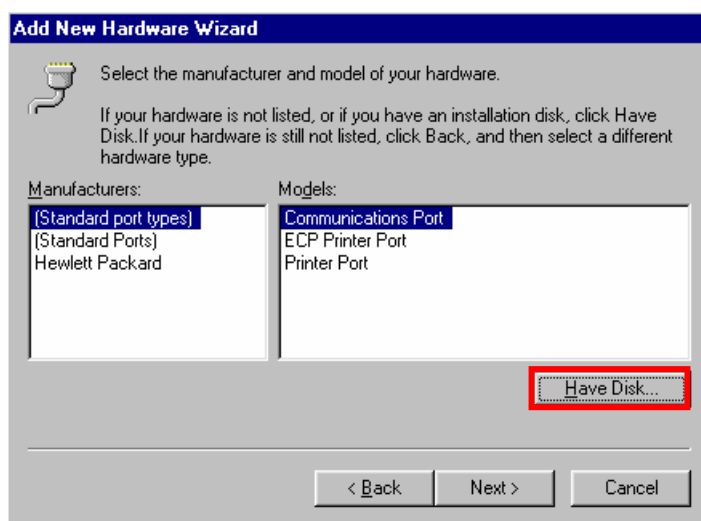
22. Select [No, I want to select the hardware from a list.], and click the [Next >] button.



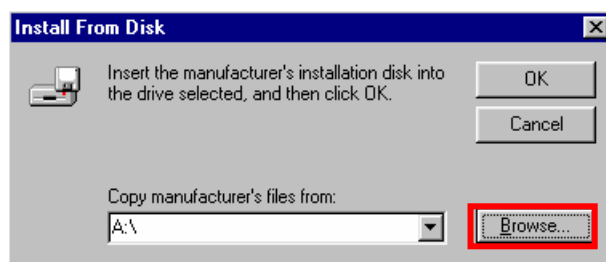
23. Select [Ports (COM & LPT)], and click the [Next >] button.



24. Click the **[Have Disk..]** button.

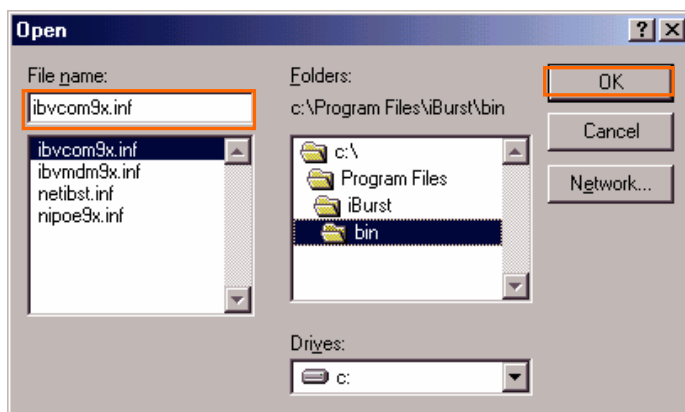


25. Click the **[Browse...]** button.

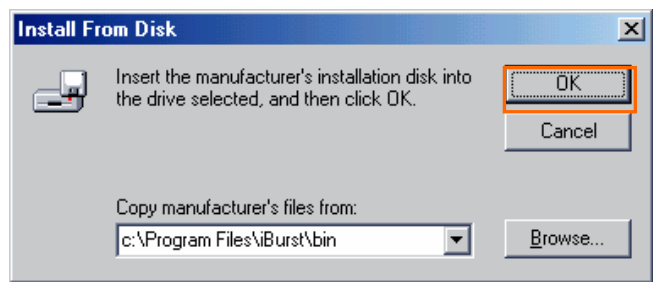


26. Select **[C:\Program Files\iBurst\bin]**, and click the **[OK]** button.

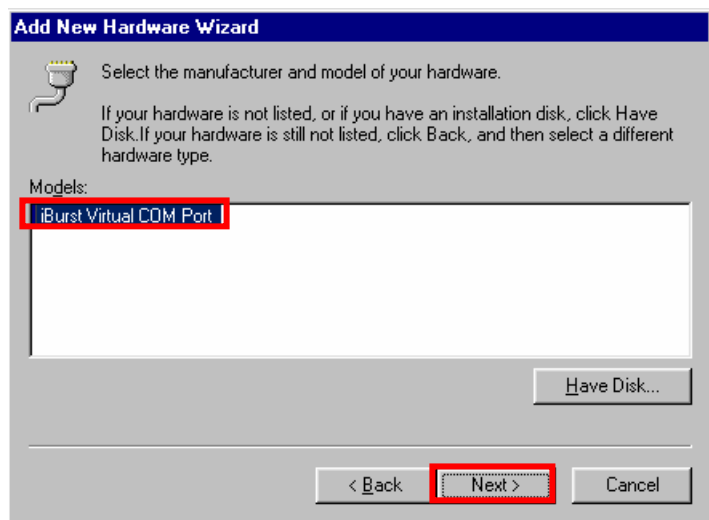
NOTE: You don't have to select a file name. Windows will find an appropriate file automatically.



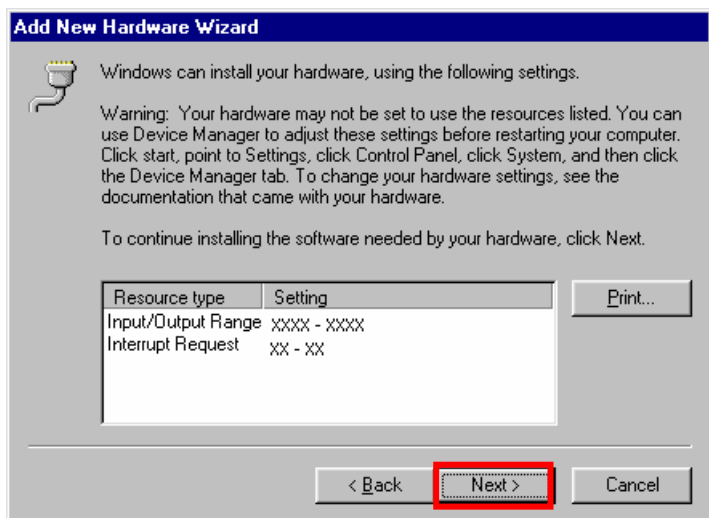
27. Click the [OK] button.



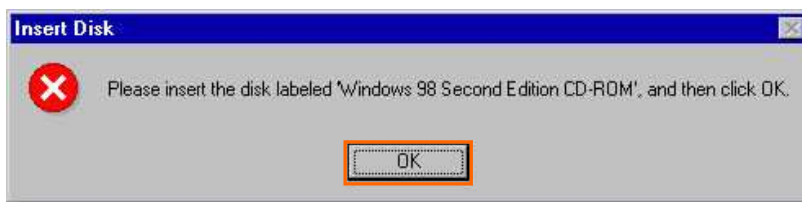
28. Select [iBurst Virtual COM Port], and click the [Next >] button.



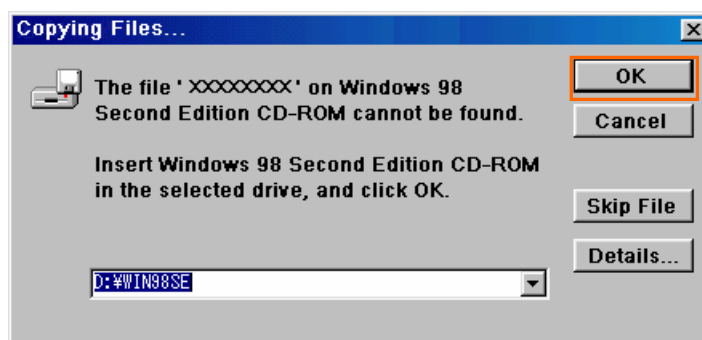
29. Click the [Next >] button.



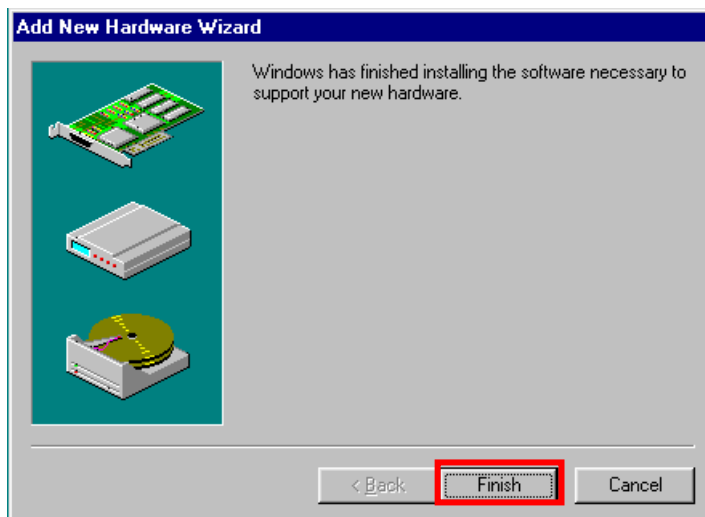
NOTE: If the dialog window as shown below appears, insert [Windows 98SE CD-ROM] into the CD-ROM drive and click the [OK] button.



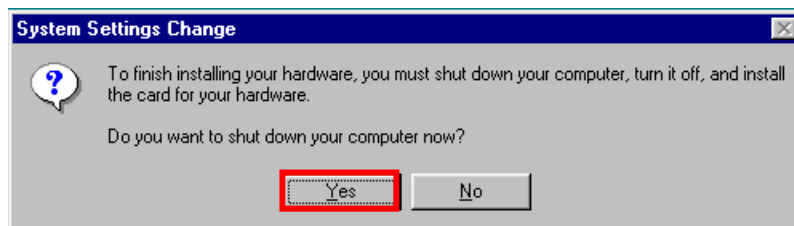
NOTE: If the dialog window as shown below appears, insert [Windows 98SE CD-ROM] into your PC and enter the directory of your [Windows 98SE CD-ROM], click the [OK] button. "xxxxxxx" in the picture below is a file name that can not be found.



30. Click the [Finish] button.



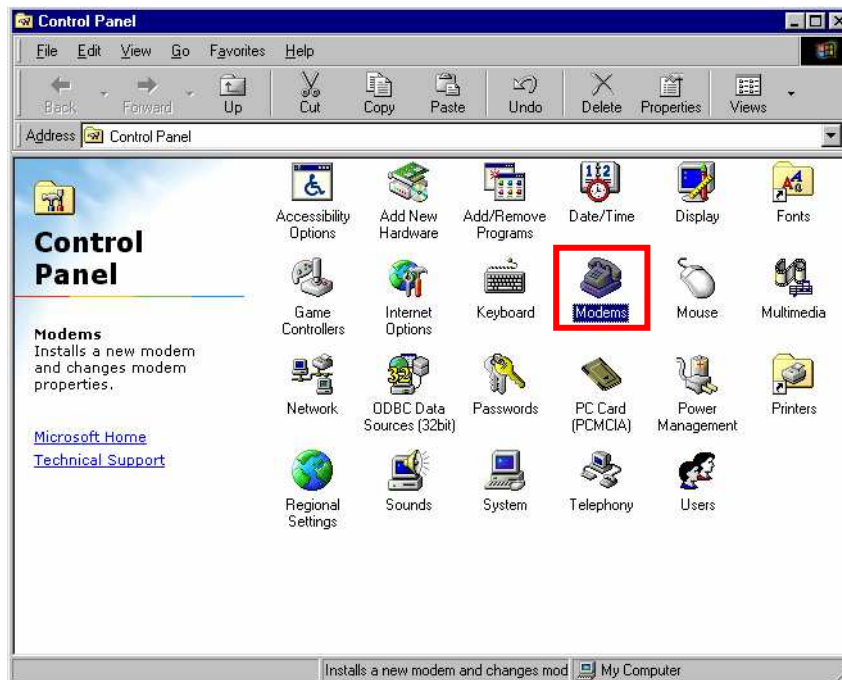
31. The dialog window shown below will appear, click the [Yes] button to **SHUTDOWN** your PC.



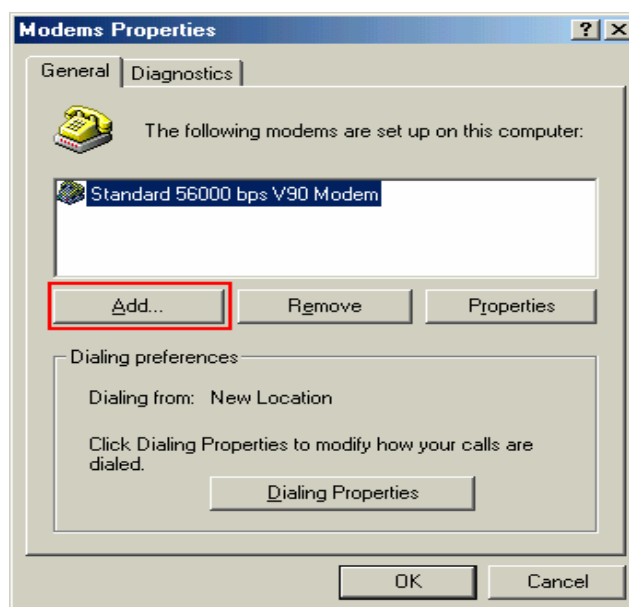
NOTE: If the PC doesn't shutdown itself, try to press Alt+Ctrl+Del keys several times.

32. Turn your PC on again.

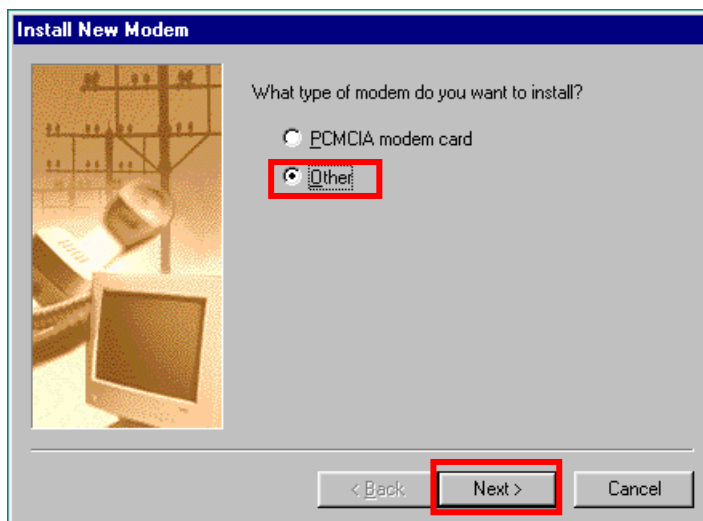
33. Click the [Start] -> [Settings] -> [Control Panel] to open Control Panel as shown below, and then double click [Modems].



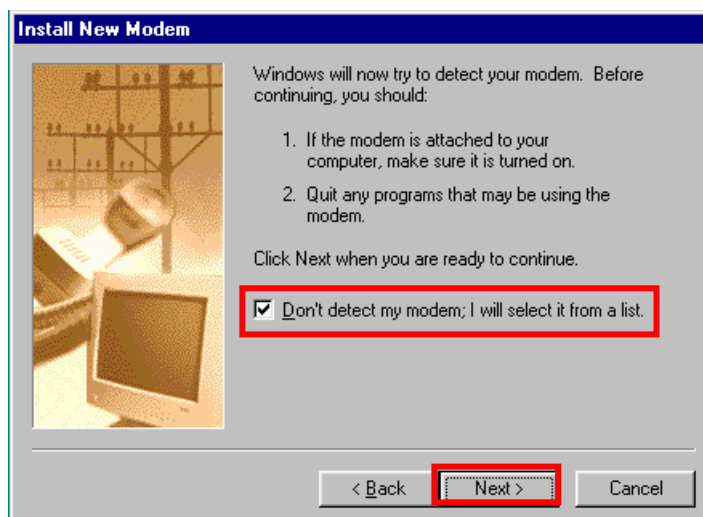
NOTE: If the dialog window as shown below appears, click the [Add] button.



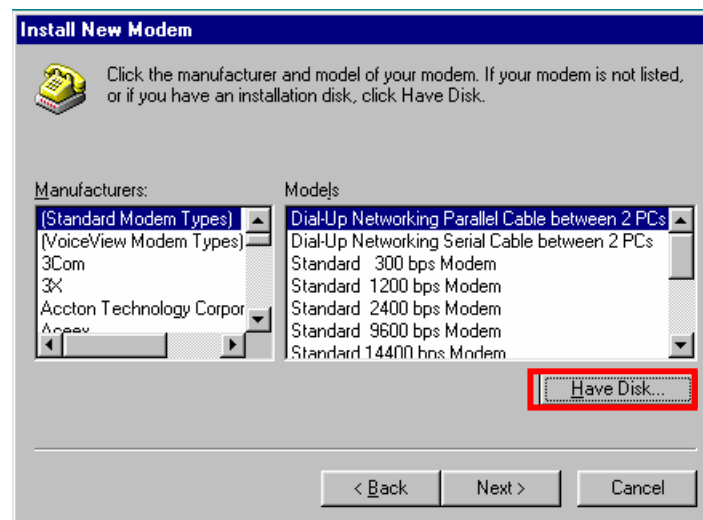
34. Select [Other], and click the [Next >] button.



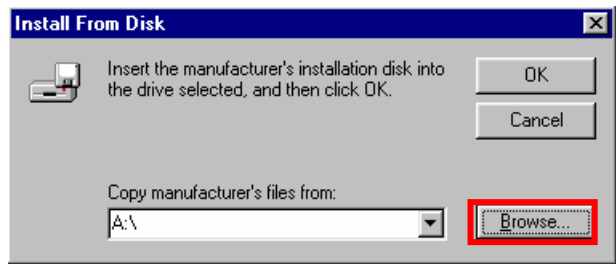
35. Check [Don't detect my modem, I will select it from a list] and click the [Next >] button.



36. Click the [Have Disk...] button.

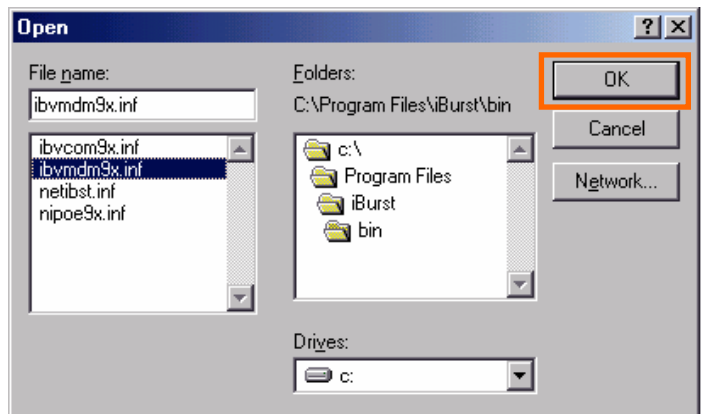


37. Click the [Browse...] button.

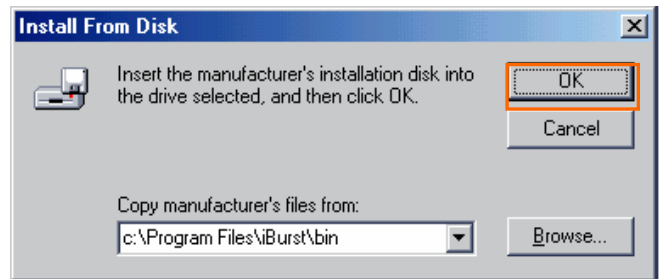


38. Select [C:\Program Files\iBurst\bin], and click the [OK] button.

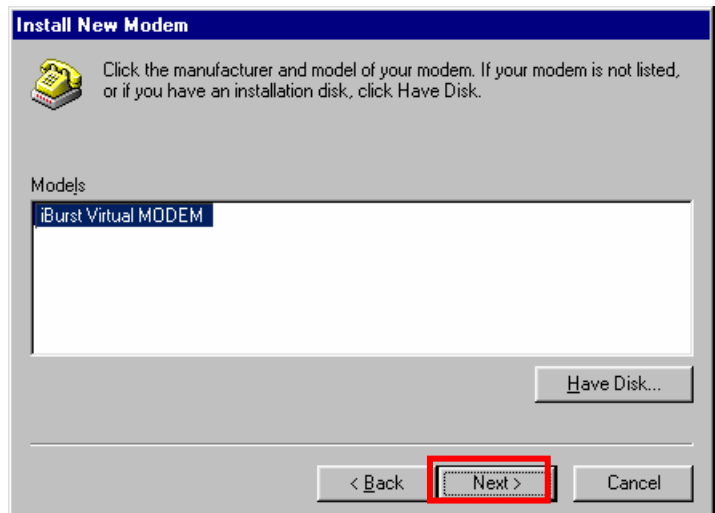
NOTE: You don't have to select a file name. Windows will find an appropriate file automatically.



39. Click the [OK] button.

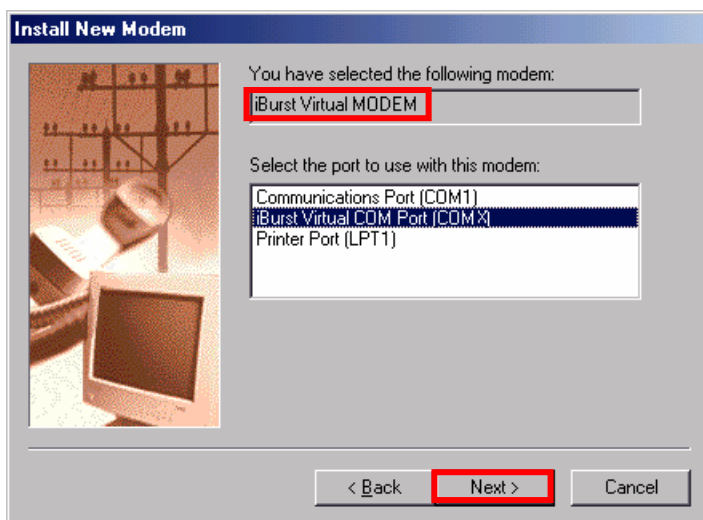


40. Select [iBurst Virtual MODEM], and click the [Next >] button.

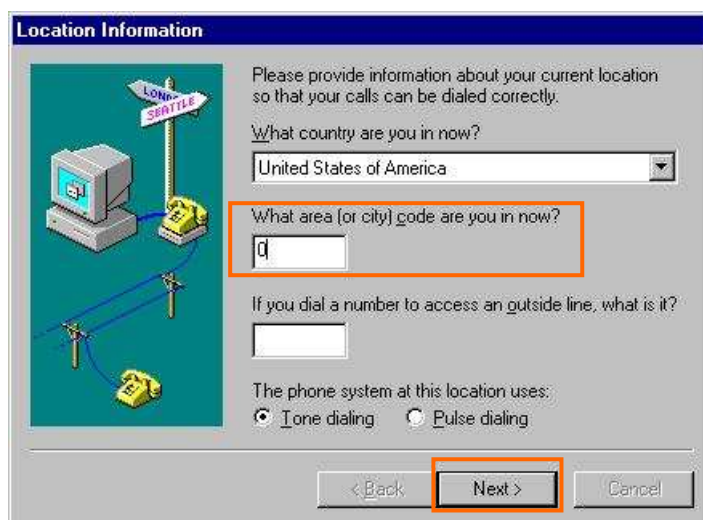


41. Select [iBurst Virtual COM Port (COM X)], and click the [Next >] button.

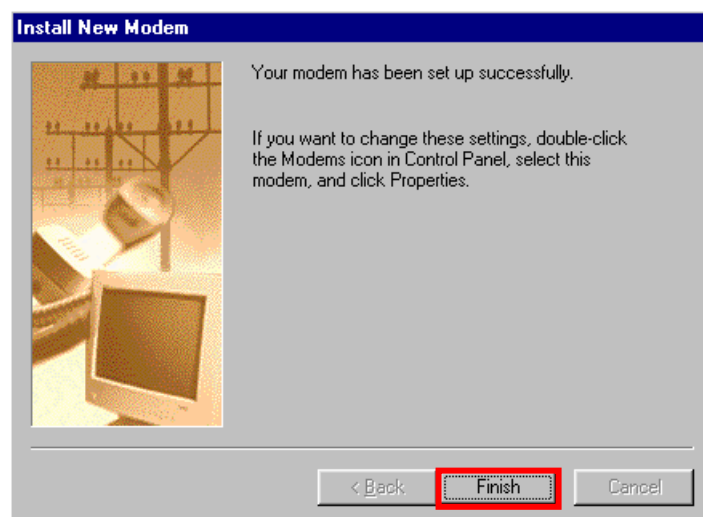
NOTE: The 'X' in "COM X" above is a COM port number assigned automatically.



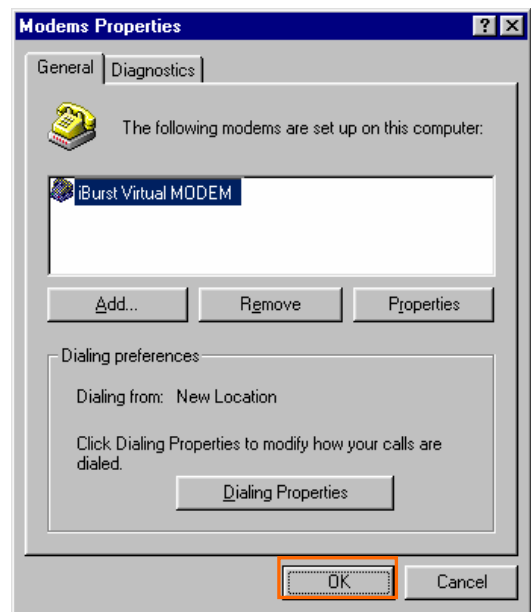
NOTE: If the dialog window as shown below appears, type a dummy number in "What are (or city) code are you in now ?" and then click the [Next >] button.



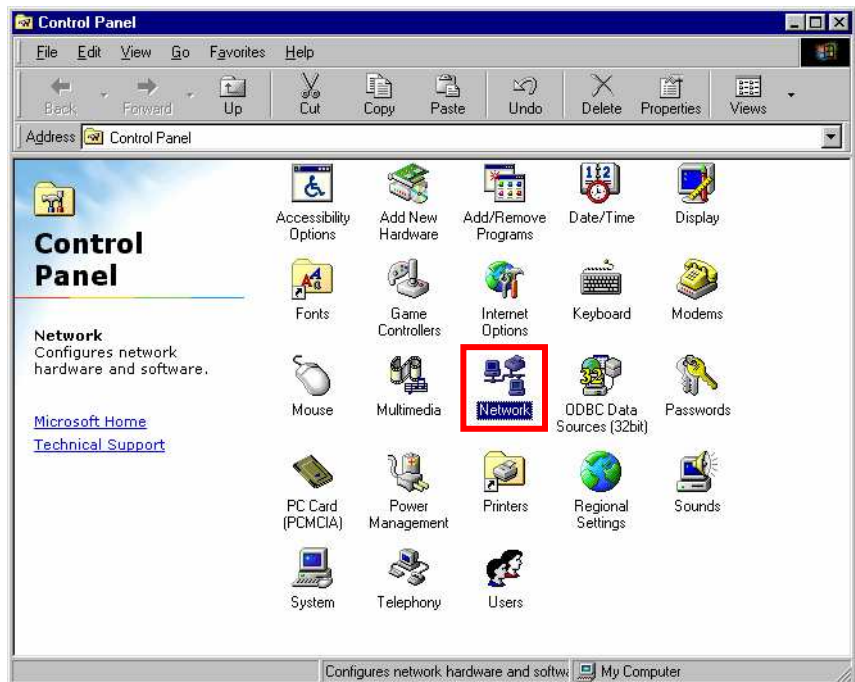
42. Click the [Finish] button.



43. Click the [OK] button.

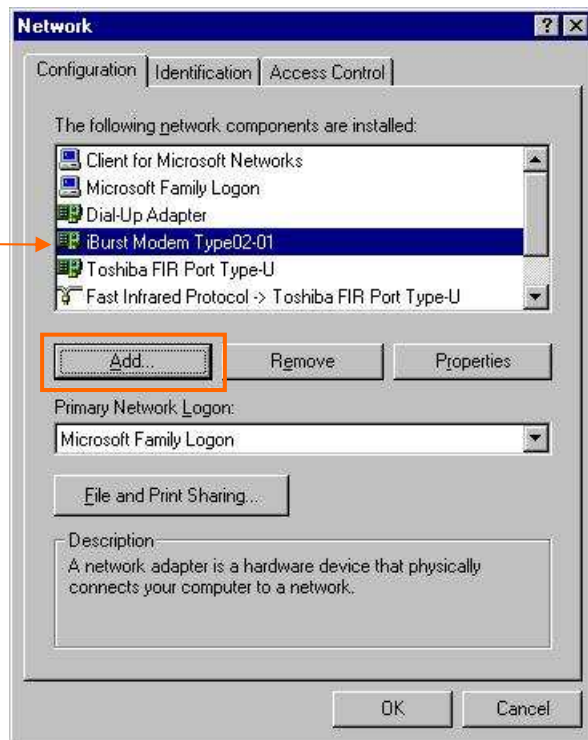


44. Click the [Start] -> [Settings] -> [Control Panel] to open Control Panel as shown below, and then double click [Network].

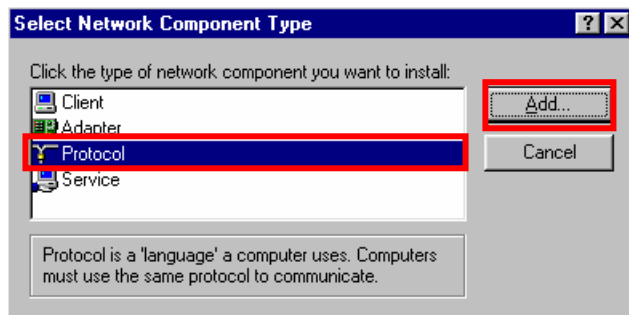


45. Click the **[Add]** button on **[Configuration]** tab.

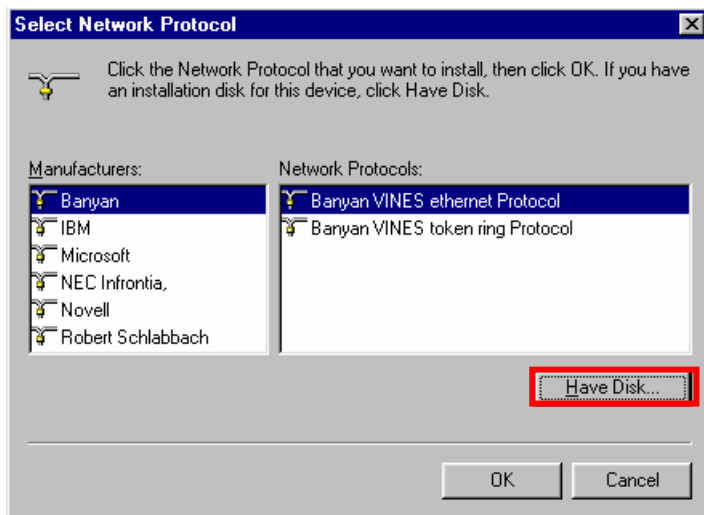
The name of a network adaptor shall be; "iBurst Modem" or "iBurst Modem Type 02-01".



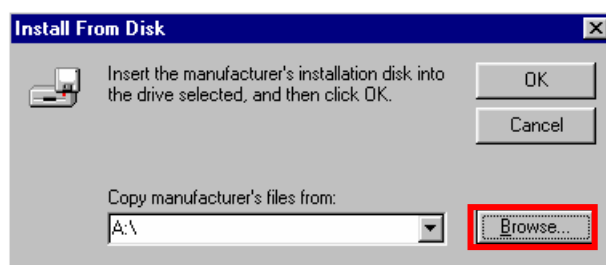
46. Select **[Protocol]** and click the **[Add...]** button.



47. Click the **[Have Disk...]** button.

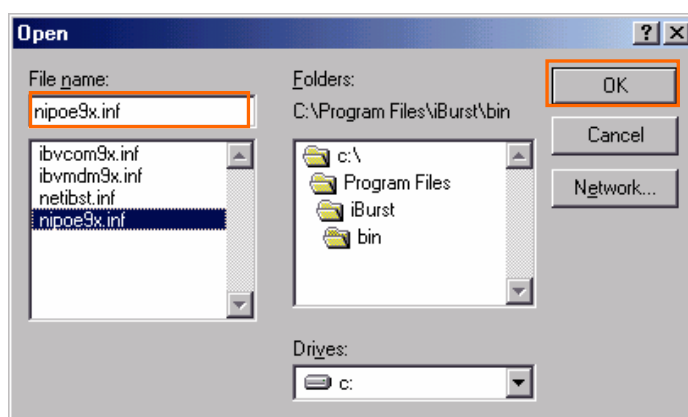


48. Click the **[Browse...]** button.



49. Select **[C:\Program Files\iBurst\bin]**, and click the **[OK]** button.

NOTE: You don't have to select a file name. Windows will find an appropriate file automatically.



50. Click the **[OK]** button.

