

Dipole Verification Plots

DUT: Dipole 1900 MHz; Type: D1900V2; Serial: 5d129

Communication System: CW; Frequency: 1900 MHz

Medium parameters used: $f = 1900$ MHz; $\sigma = 1.411$ S/m; $\epsilon_r = 39.198$; $\rho = 1000$ kg/m³

Phantom section: Flat section

DASY Configuration

Probe: EX3DV4 - SN3745; ConvF(7.29, 7.29, 7.29); Calibrated: 2015/4/24;

Sensor-Surface: 2mm (Mechanical Surface Detection), $z = 1.0, 31.0$

Electronics: DAE4 Sn554; Calibrated: 2015/4/24

Phantom: SAM v5.0 TP:1799; Type: QD000P40CD; Serial: TP:1799

MEASUREMENT SW: DASY52, VERSION 52.8 (8);

Test date: 2015-11-27; Ambient Temp: 21.9; Tissue Temp: 21.6

1900 MHz System Verification -Head-

Area Scan (5x7x1): Measurement grid: $dx=15$ mm, $dy=15$ mm

Maximum value of SAR (measured) = 14.1 W/kg

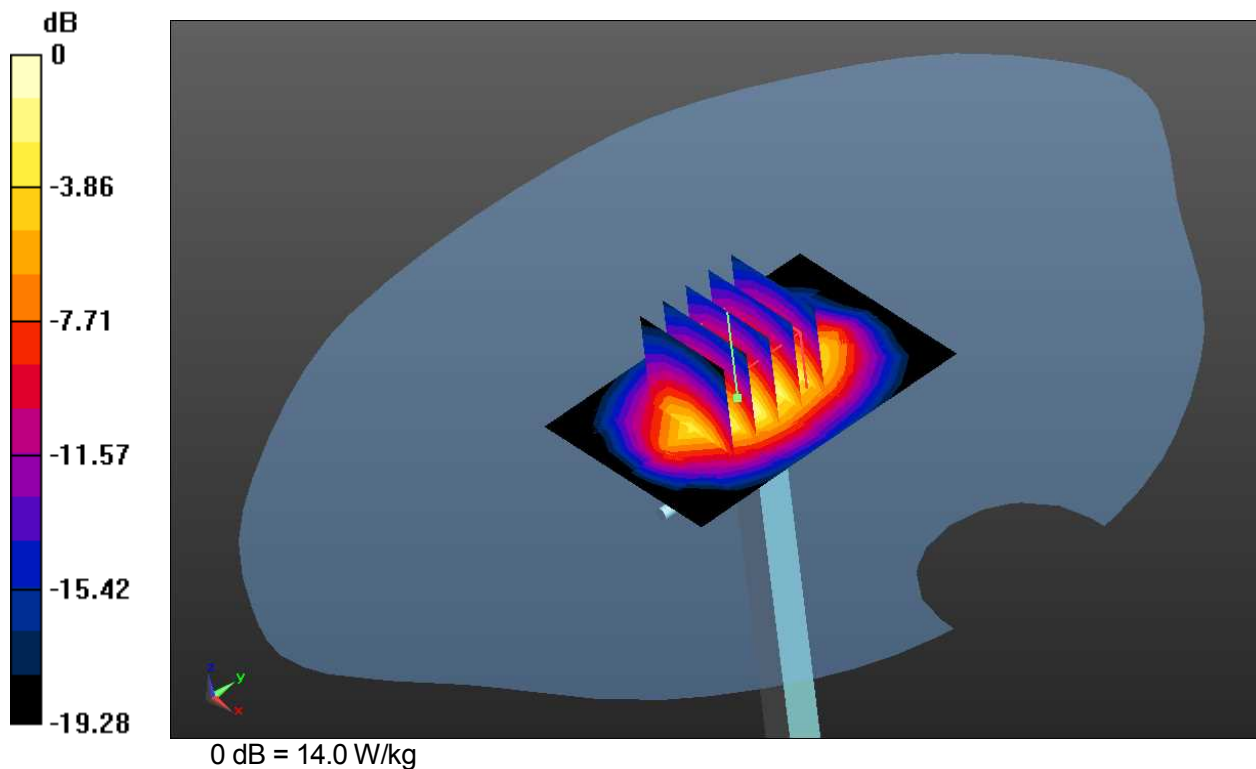
Zoom Scan (5x5x7)/Cube 0: Measurement grid: $dx=8$ mm, $dy=8$ mm, $dz=5$ mm

Reference Value = 102.1 V/m; Power Drift = -0.01 dB

Peak SAR (extrapolated) = 18.4 W/kg

SAR(1 g) = 9.79 W/kg; SAR(10 g) = 5.03 W/kg

Maximum value of SAR (measured) = 14.0 W/kg



DUT: Dipole 1900 MHz; Type: D1900V2; Serial: 5d129

Communication System: CW; Frequency: 1900 MHz
 Medium parameters used: $f = 1900$ MHz; $\sigma = 1.411$ S/m; $\epsilon_r = 39.198$; $\rho = 1000$ kg/m³
 Phantom section: Flat section

DASY Configuration

Probe: EX3DV4 - SN3745; ConvF(7.29, 7.29, 7.29); Calibrated: 2015/4/24;
 Sensor-Surface: 2mm (Mechanical Surface Detection), $z = 1.0, 31.0$
 Electronics: DAE4 Sn554; Calibrated: 2015/4/24
 Phantom: SAM v5.0 TP:1799; Type: QD000P40CD; Serial: TP:1799
 MEASUREMENT SW: DASY52, VERSION 52.8 (8);

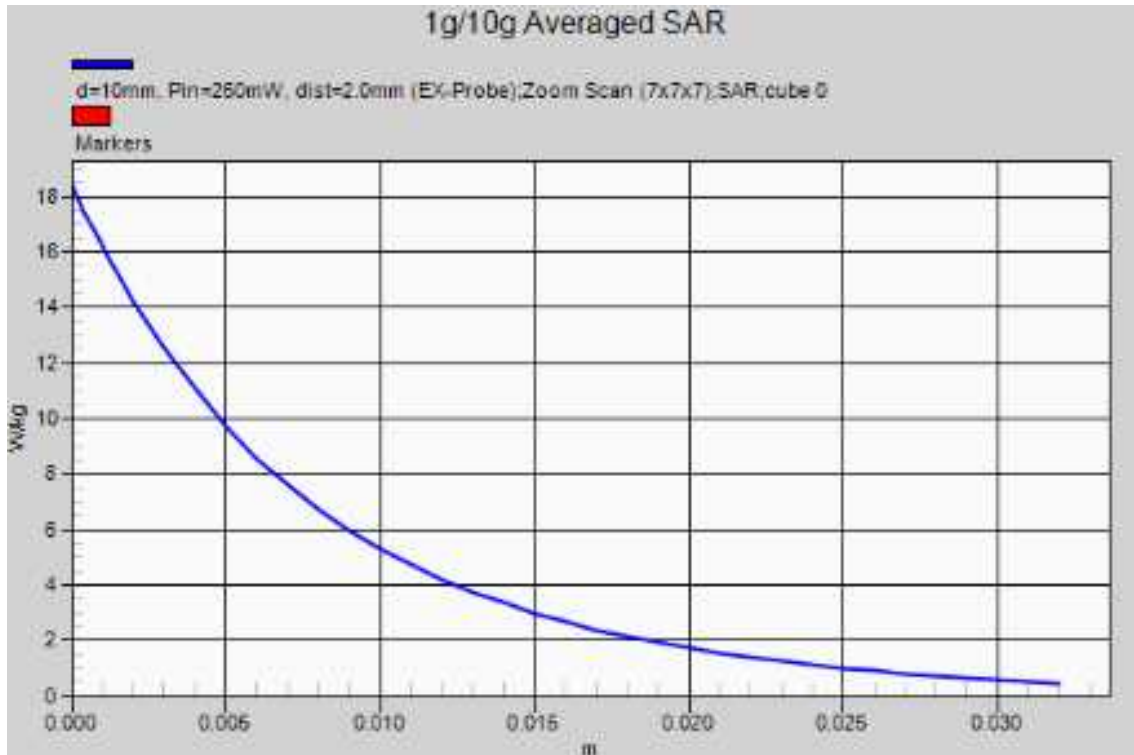
Test date: 2015-11-27; Ambient Temp: 21.9; Tissue Temp: 21.6

1900 MHz System Verification -Head-

Area Scan (5x7x1): Measurement grid: $dx=15$ mm, $dy=15$ mm
 Maximum value of SAR (measured) = 14.1 W/kg

Zoom Scan (5x5x7)/Cube 0: Measurement grid: $dx=8$ mm, $dy=8$ mm, $dz=5$ mm
 Reference Value = 102.1 V/m; Power Drift = -0.01 dB
 Peak SAR (extrapolated) = 18.4 W/kg

SAR(1 g) = 9.79 W/kg; SAR(10 g) = 5.03 W/kg
 Maximum value of SAR (measured) = 14.0 W/kg



DUT: Dipole 1900 MHz; Type: D1900V2; Serial: 5d129

Communication System: CW; Frequency: 1900 MHz
 Medium parameters used: $f = 1900$ MHz; $\sigma = 1.548$ S/m; $\epsilon_r = 51.992$; $\rho = 1000$ kg/m³
 Phantom section: Flat section

DASY Configuration

Probe: EX3DV4 - SN3745; ConvF(6.99, 6.99, 6.99); Calibrated: 2015/4/24;
 Sensor-Surface: 2mm (Mechanical Surface Detection), $z = 1.0, 31.0$
 Electronics: DAE4 Sn554; Calibrated: 2015/4/24
 Phantom: ELI v5.0 (20deg probe tilt) TP;1230; Type: QDOVA001BB; Serial: TP:1230
 MEASUREMENT SW: DASY52, VERSION 52.8 (8);

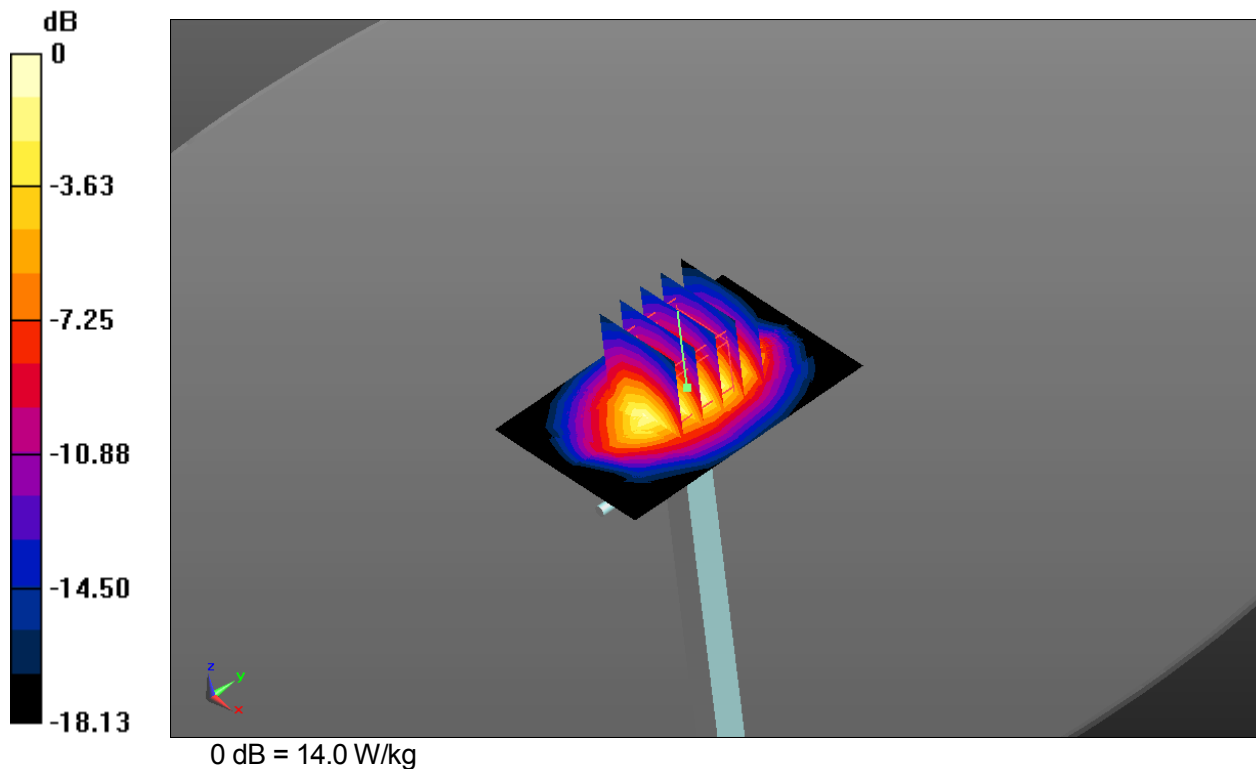
Test date: 2015-11-27; Ambient Temp: 23.0; Tissue Temp: 22.0

1900 MHz System Verification -Body-

Area Scan (5x7x1): Measurement grid: $dx=15$ mm, $dy=15$ mm
 Maximum value of SAR (measured) = 14.1 W/kg

Zoom Scan (5x5x7)/Cube 0: Measurement grid: $dx=8$ mm, $dy=8$ mm, $dz=5$ mm
 Reference Value = 96.95 V/m; Power Drift = 0.09 dB
 Peak SAR (extrapolated) = 17.9 W/kg

SAR(1 g) = 9.92 W/kg; SAR(10 g) = 5.18 W/kg
 Maximum value of SAR (measured) = 14.0 W/kg



DUT: Dipole 1900 MHz; Type: D1900V2; Serial: 5d129

Communication System: CW; Frequency: 1900 MHz
 Medium parameters used: $f = 1900$ MHz; $\sigma = 1.548$ S/m; $\epsilon_r = 51.992$; $\rho = 1000$ kg/m³
 Phantom section: Flat section

DASY Configuration

Probe: EX3DV4 - SN3745; ConvF(6.99, 6.99, 6.99); Calibrated: 2015/4/24;
 Sensor-Surface: 2mm (Mechanical Surface Detection), $z = 1.0, 31.0$
 Electronics: DAE4 Sn554; Calibrated: 2015/4/24
 Phantom: ELI v5.0 (20deg probe tilt) TP;1230; Type: QDOVA001BB; Serial: TP:1230
 MEASUREMENT SW: DASY52, VERSION 52.8 (8);

Test date: 2015-11-27; Ambient Temp: 23.0; Tissue Temp: 22.0

1900 MHz System Verification -Body-

Area Scan (5x7x1): Measurement grid: $dx=15$ mm, $dy=15$ mm
 Maximum value of SAR (measured) = 14.1 W/kg

Zoom Scan (5x5x7)/Cube 0: Measurement grid: $dx=8$ mm, $dy=8$ mm, $dz=5$ mm
 Reference Value = 96.95 V/m; Power Drift = 0.09 dB
 Peak SAR (extrapolated) = 17.9 W/kg

SAR(1 g) = 9.92 W/kg; SAR(10 g) = 5.18 W/kg
 Maximum value of SAR (measured) = 14.0 W/kg

