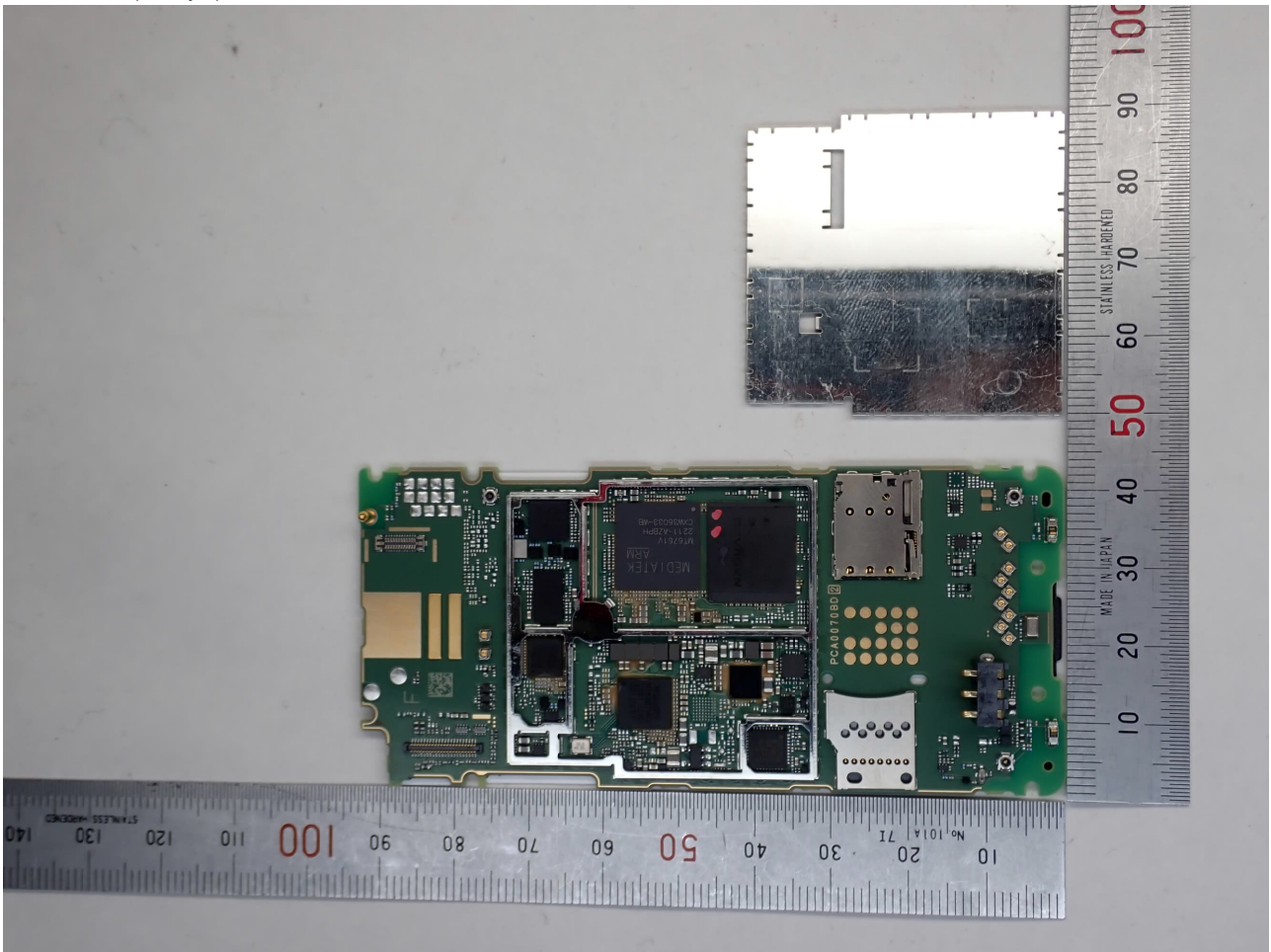
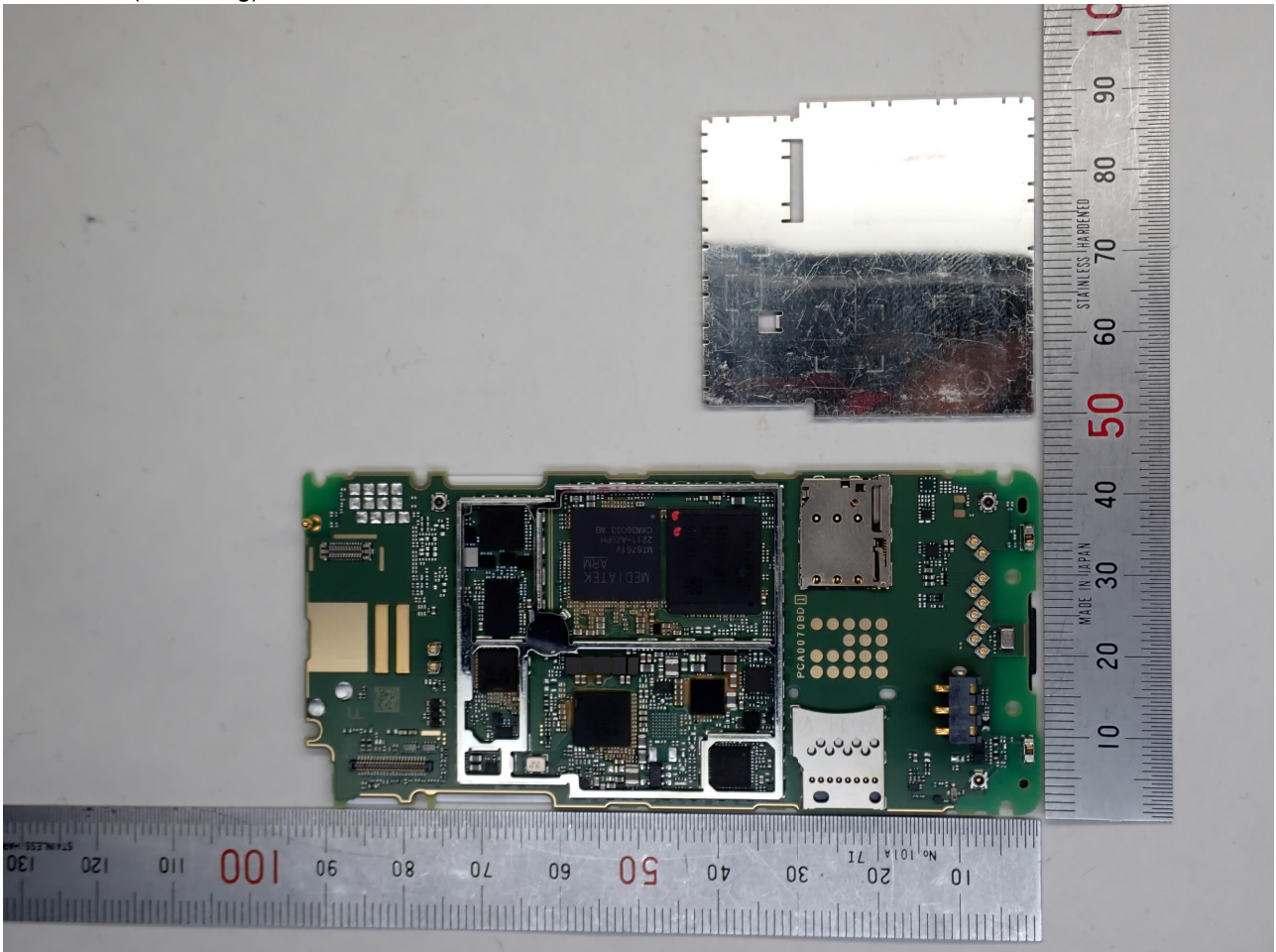


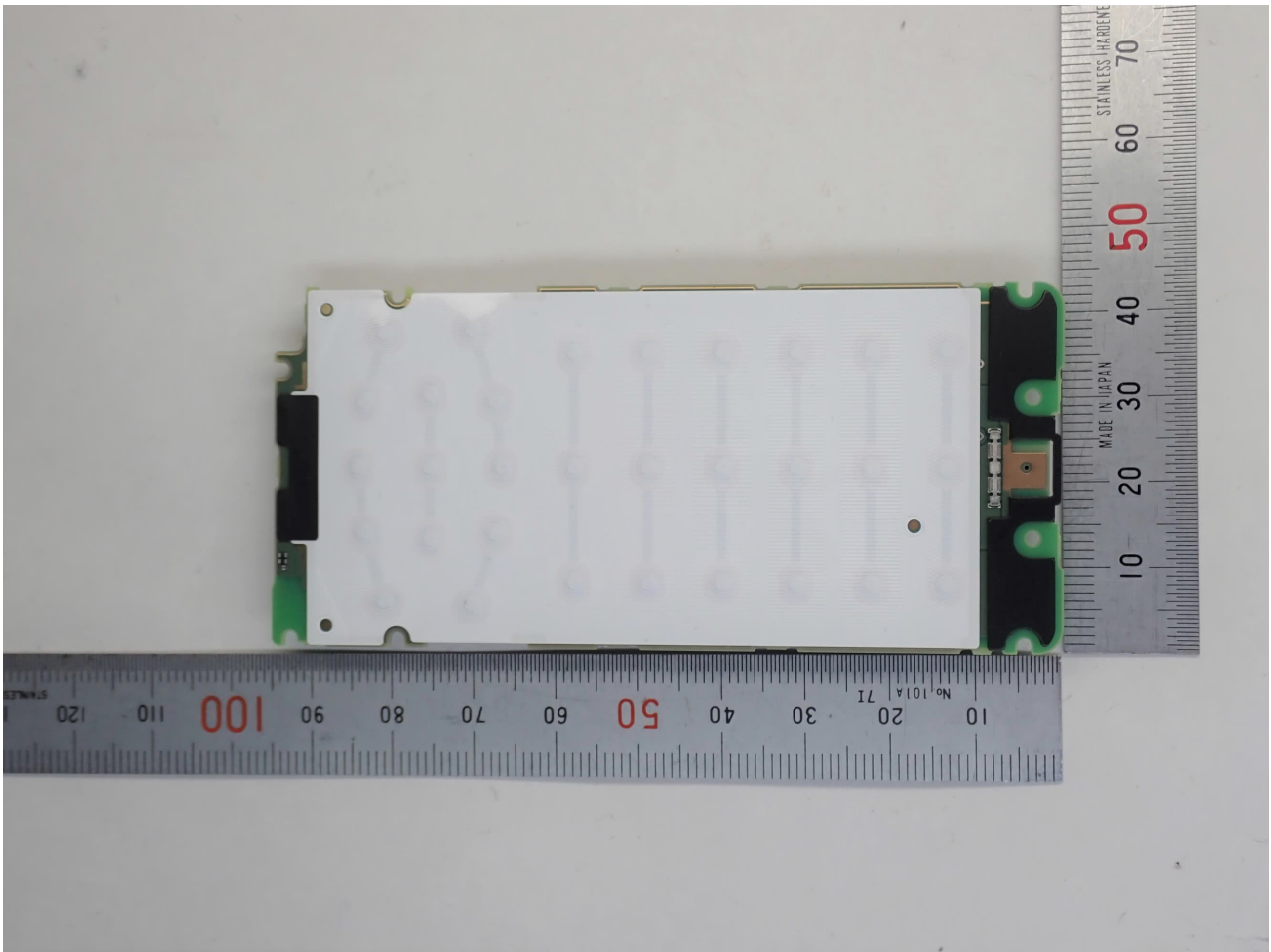
Main PCB (Nanya)



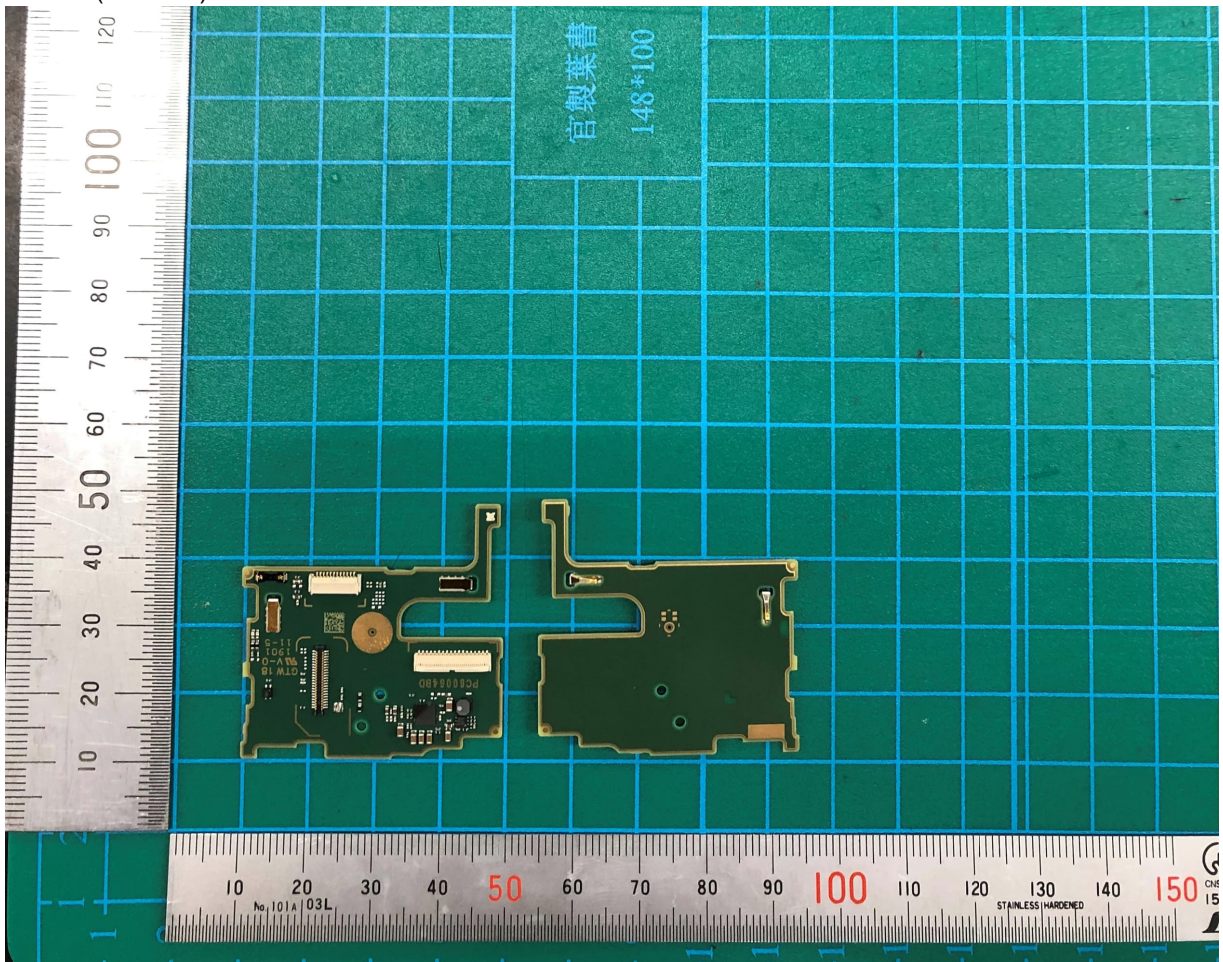
Main PCB (Samsung)



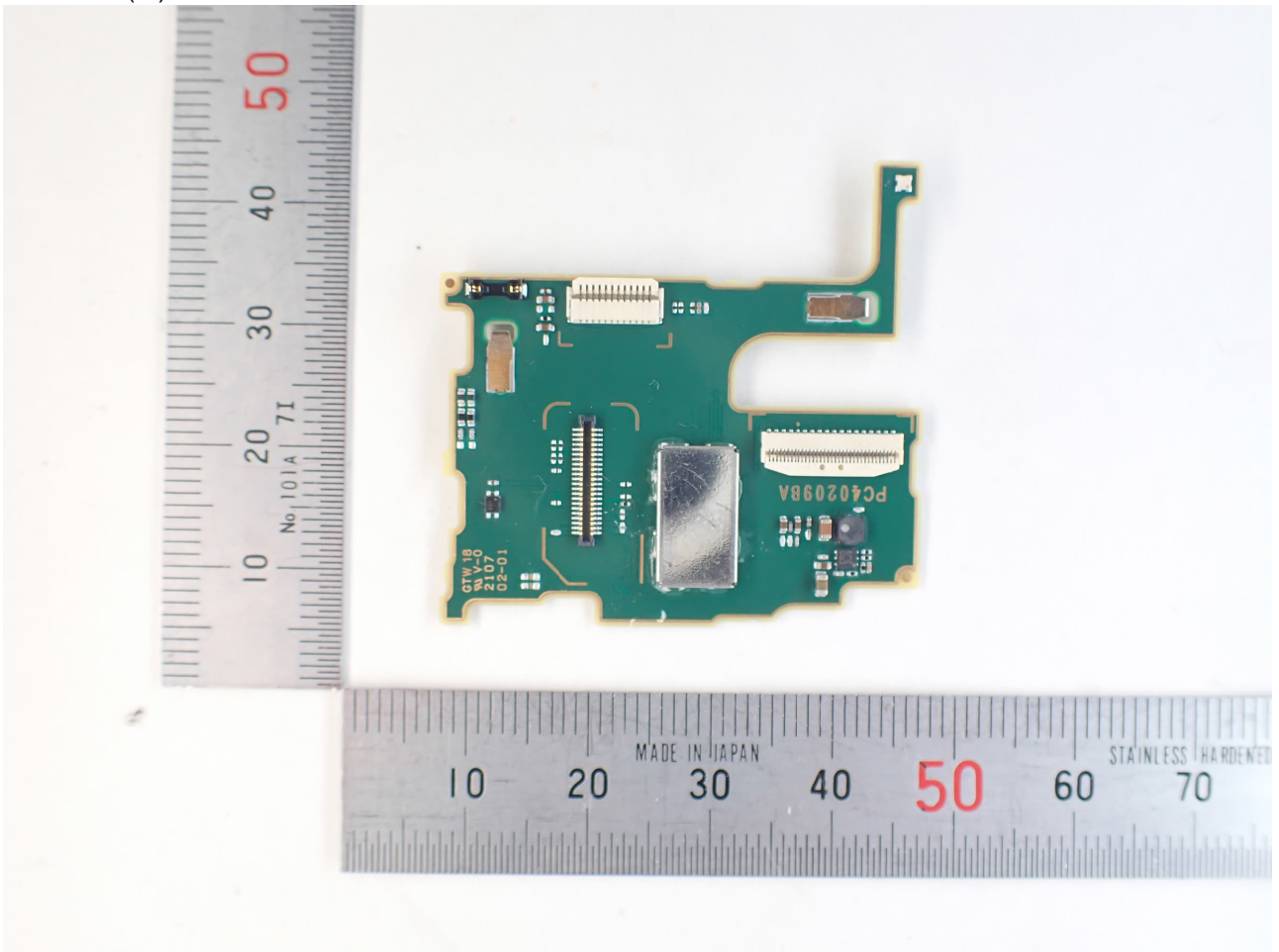
Main PCB \*back side



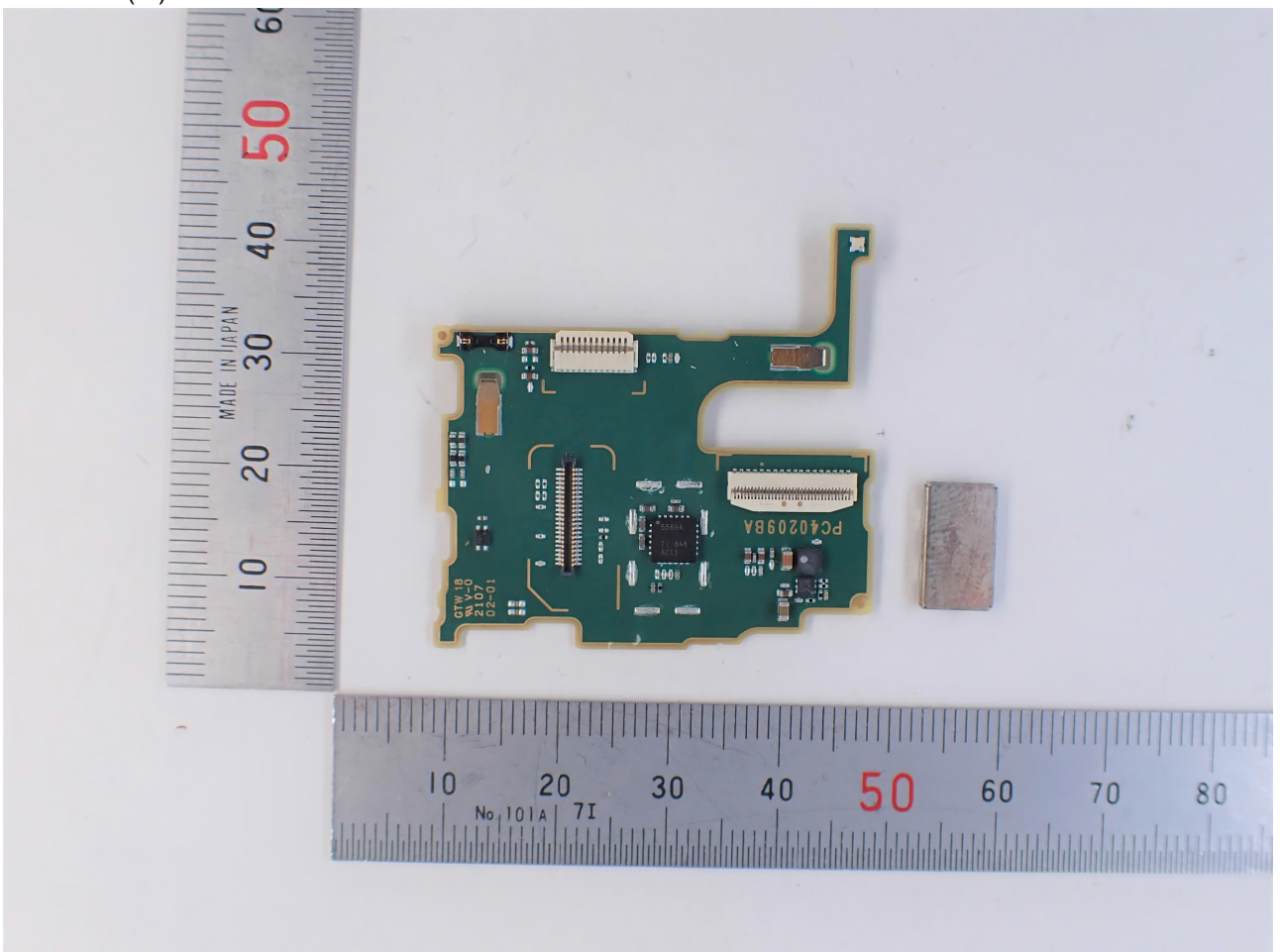
LCD PCB (OnSemi)



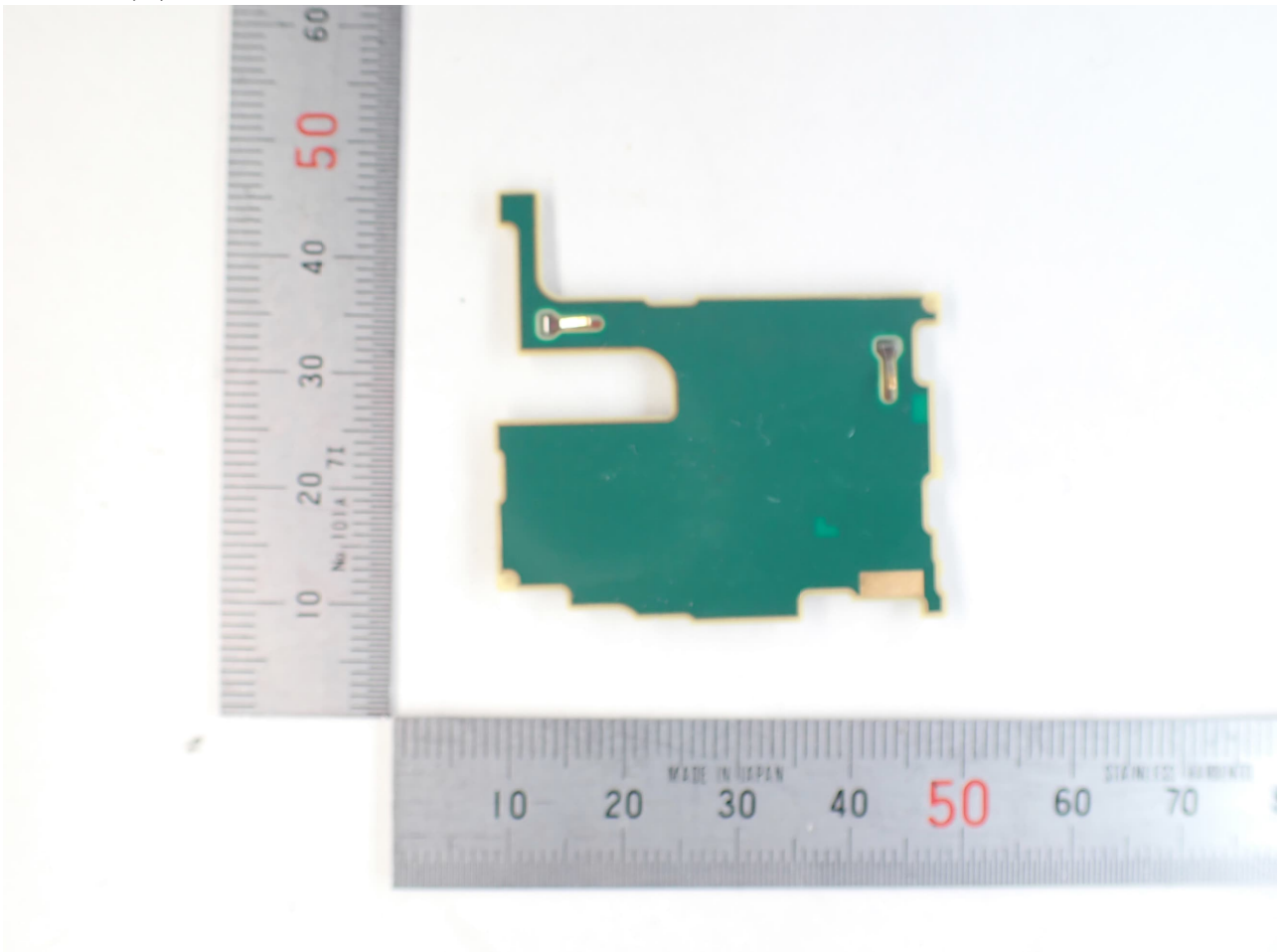
LCD PCB (TI)



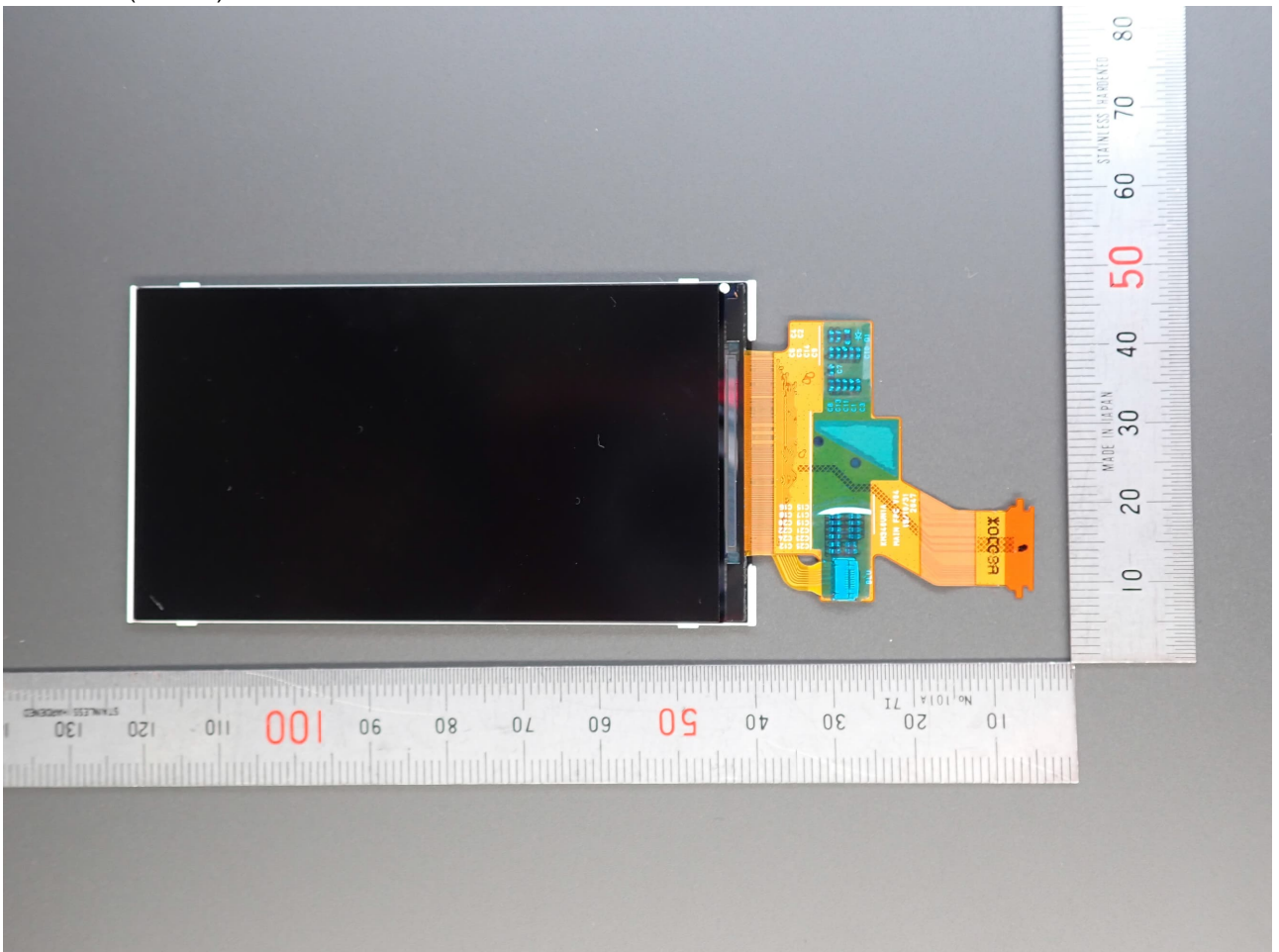
LCD PCB (TI) without shielded case



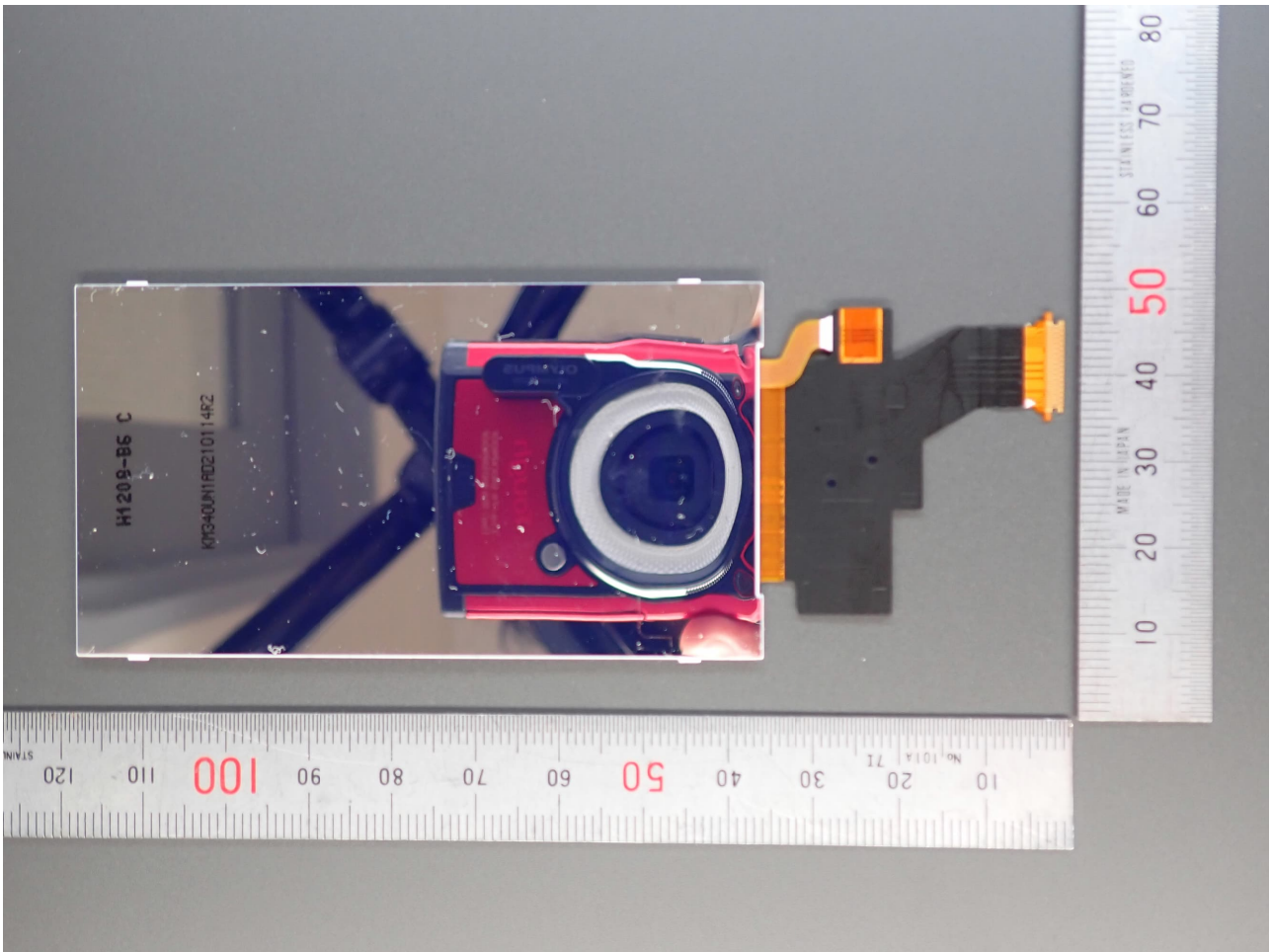
LCD PCB (TI) \*back side



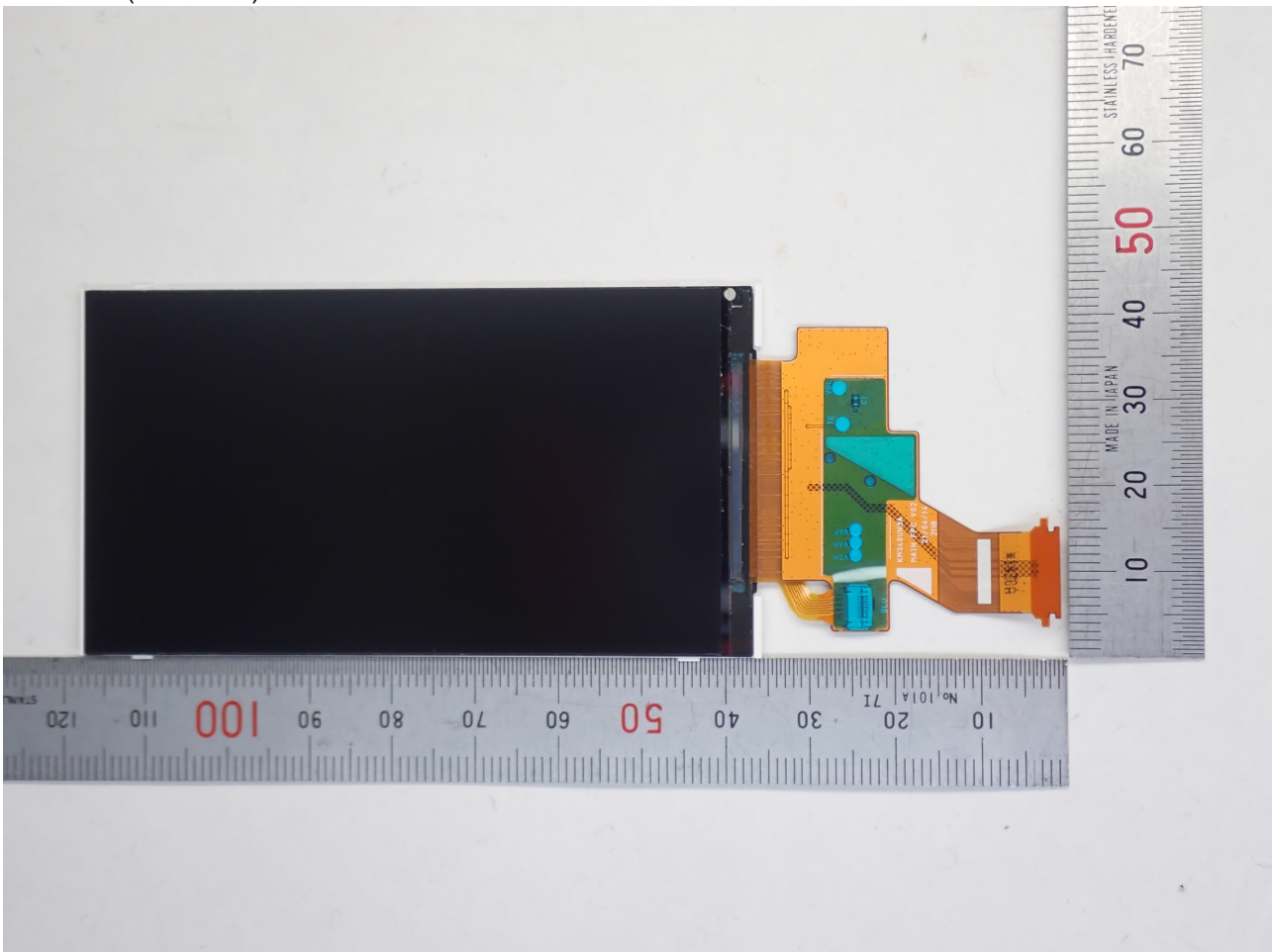
LCD PCB (ILITEK)



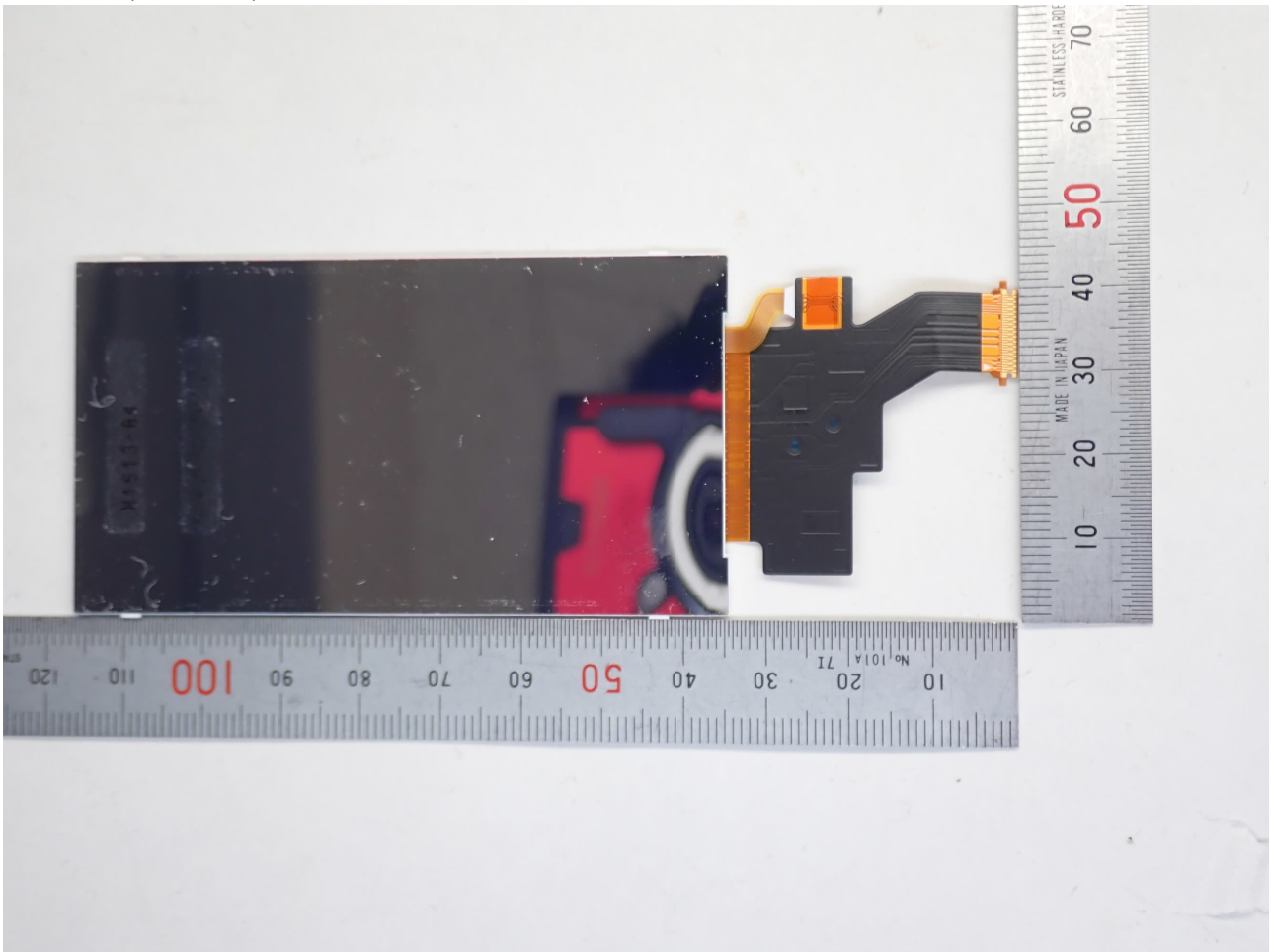
LCD PCB (ILITEK) \*back side



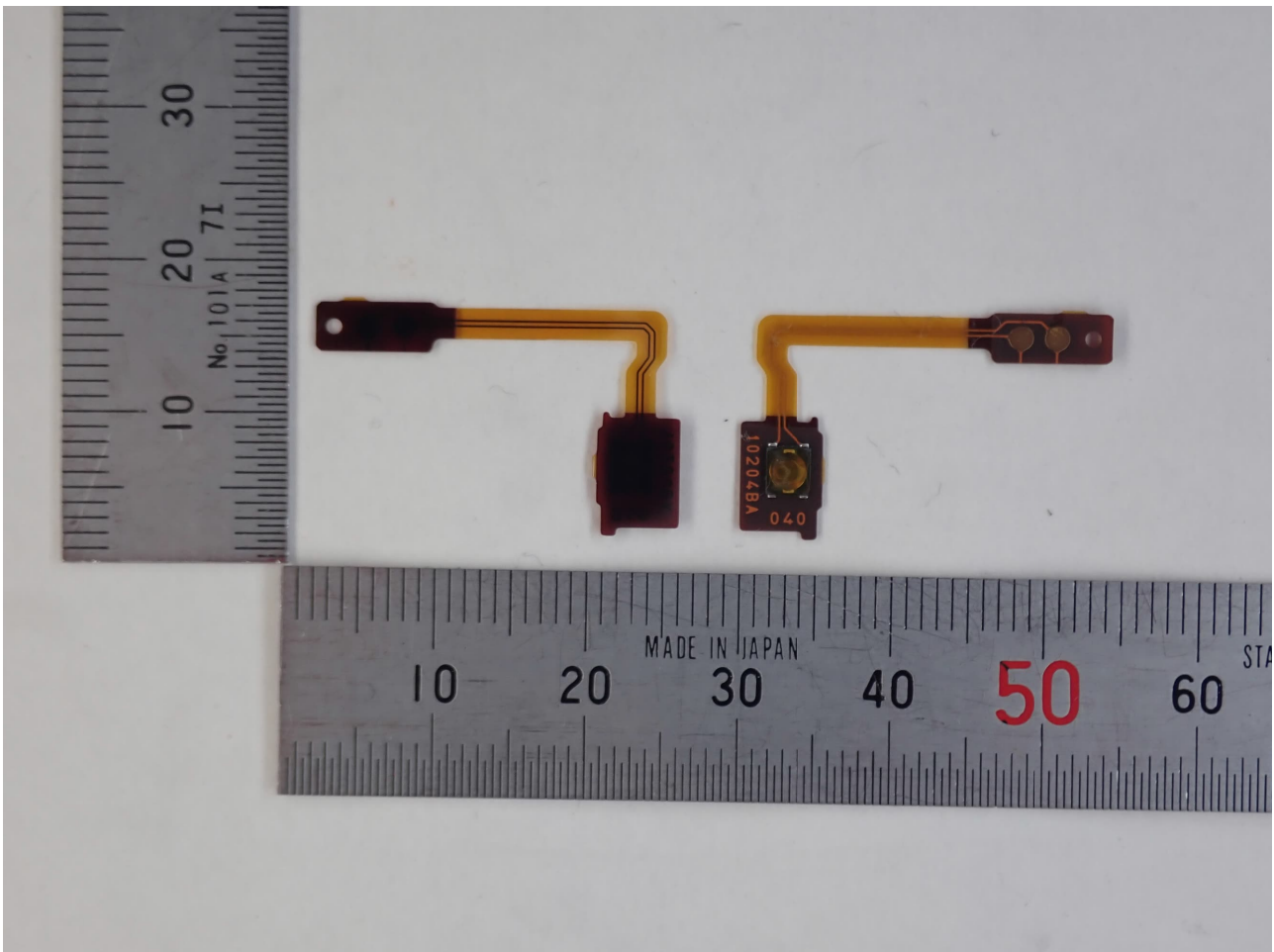
LCD PCB (STRONIX)



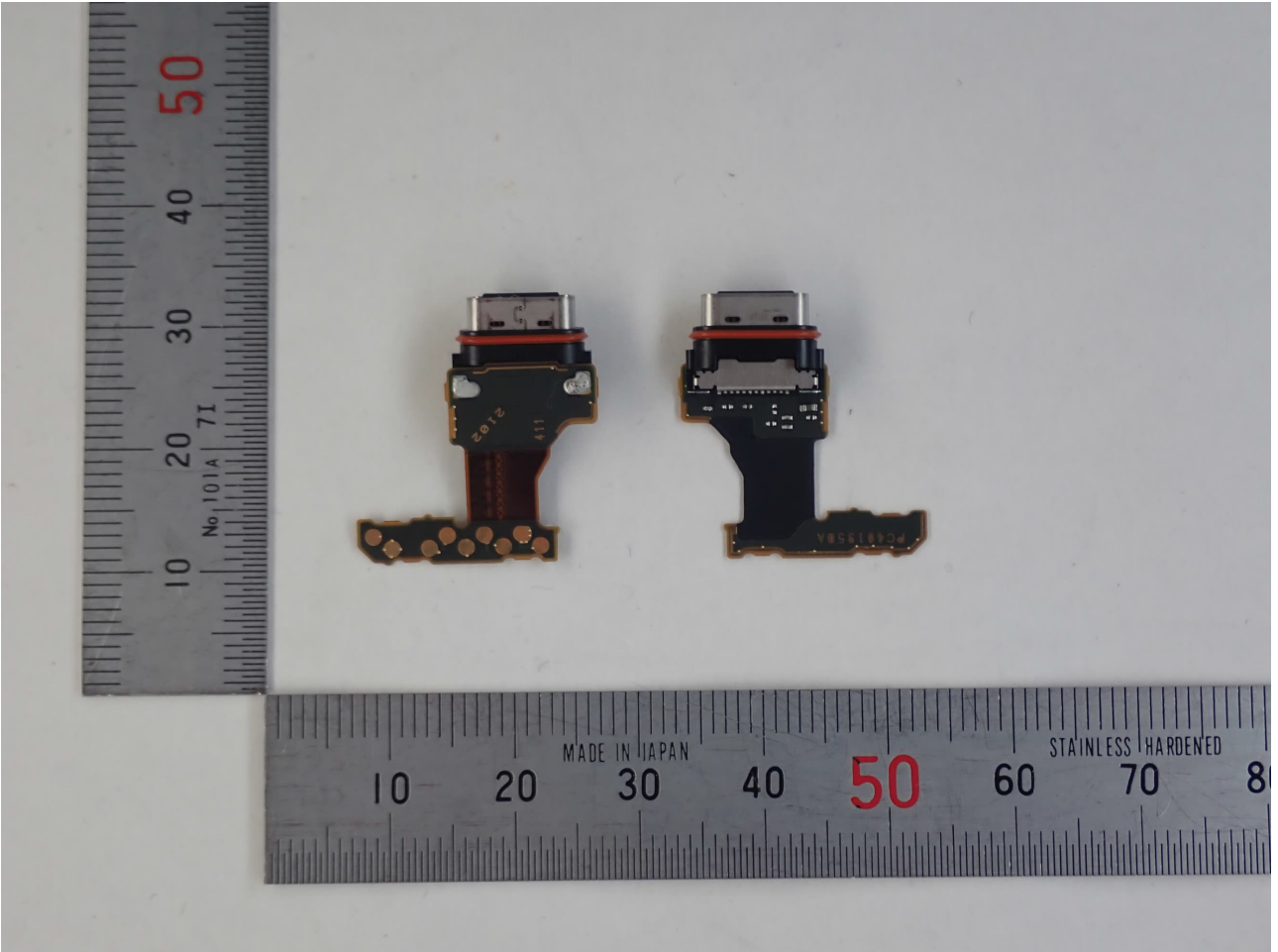
LCD PCB (STRONIX) \*back side



SIDEKEY



USB FPC



HINGE FPC

