

SAR Plots

- Verification Plots
- SAR Test Plots

DT&C Co., Ltd.

DUT: Dipole 1800 MHz; Type: D1800V2; Serial: D1800V2 - SN2d202

Communication System: UID 0, CW (0); Frequency: 1800 MHz; Duty Cycle: 1:1
Medium parameters used: $f = 1800$ MHz; $\sigma = 1.393$ S/m; $\epsilon_r = 39.223$; $\rho = 1000$ kg/m³
Phantom section: Flat Section

DASY5 Configuration:

Probe: EX3DV4 - SN3866; ConvF(8.01, 8.01, 8.01); Calibrated: 5/27/2020 Electronics: DAE4 Sn1453
Sensor-Surface: 2mm (Mechanical Surface Detection)
Phantom: SAM with CRP v5.0; Type: QD000P40CD; Serial: TP:1837
Measurement SW: DASY52, Version 52.10 (3); SEMCAD X Version 14.6.13 (7474)

Test Date: 2020-08-18; Ambient Temp: 20.8; Tissue Temp: 20.5

1800 MHz System Verification (100 mW)

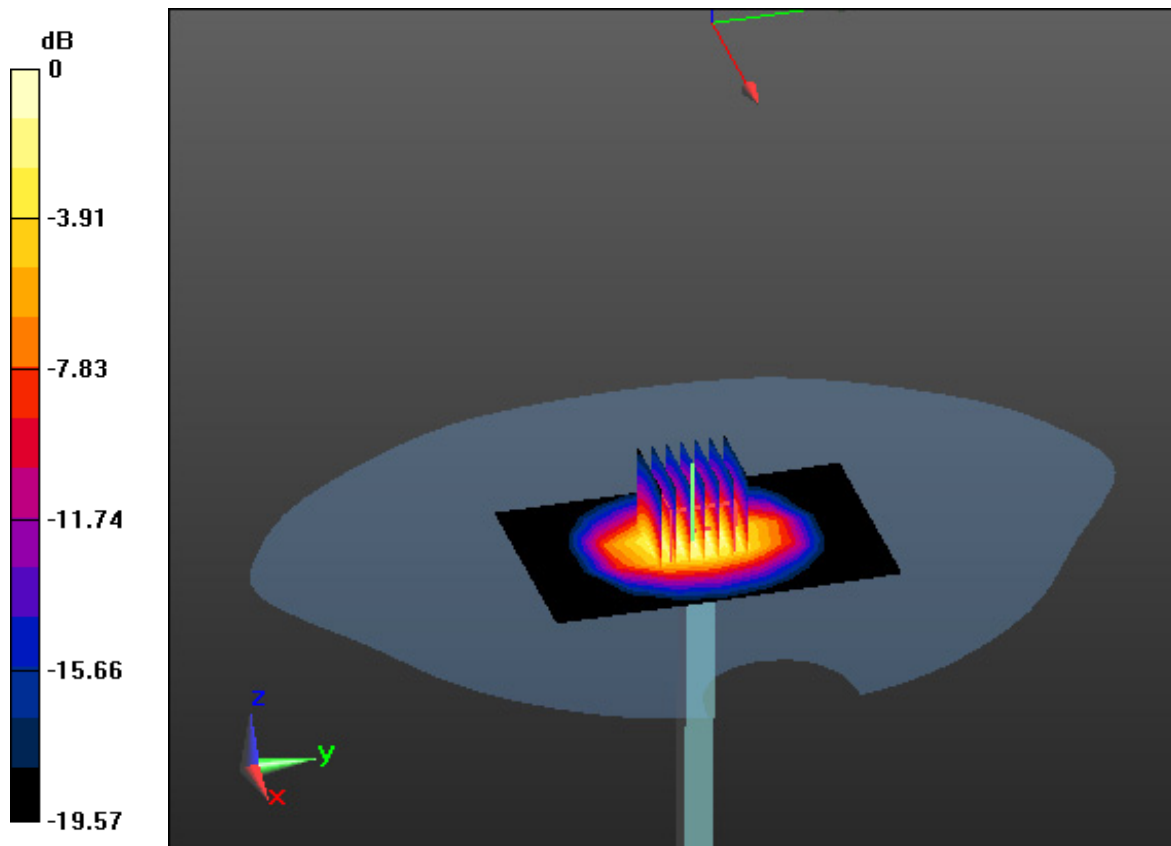
Area Scan (6x9x1): Measurement grid: dx=15mm, dy=15mm

Zoom Scan (7x7x7)/Cube 0: Measurement grid: dx=5mm, dy=5mm, dz=5mm

Power Drift = -0.08 dB

Peak SAR (extrapolated) = 7.92 W/kg

SAR(1 g) = 4.09 W/kg; SAR(10 g) = 2.11 W/kg



DT&C Co., Ltd.

DUT: Dipole 1800 MHz; Type: D1800V2; Serial: D1800V2 - SN2d202

Communication System: UID 0, CW (0); Frequency: 1800 MHz; Duty Cycle: 1:1
Medium parameters used: $f = 1800$ MHz; $\sigma = 1.393$ S/m; $\epsilon_r = 39.223$; $\rho = 1000$ kg/m³
Phantom section: Flat Section

DASY5 Configuration:

Probe: EX3DV4 - SN7368; ConvF(8.78, 8.78, 8.78); Calibrated: 1/30/2020 Electronics: DAE4 Sn1335
Sensor-Surface: 2mm (Mechanical Surface Detection)
Phantom: SAM with CRP v5.0; Type: QD000P40CD; Serial: TP:1837
Measurement SW: DASY52, Version 52.10 (3); SEMCAD X Version 14.6.13 (7474)

Test Date: 2020-08-18; Ambient Temp: 20.8; Tissue Temp: 20.5

1800 MHz System Verification (100 mW)

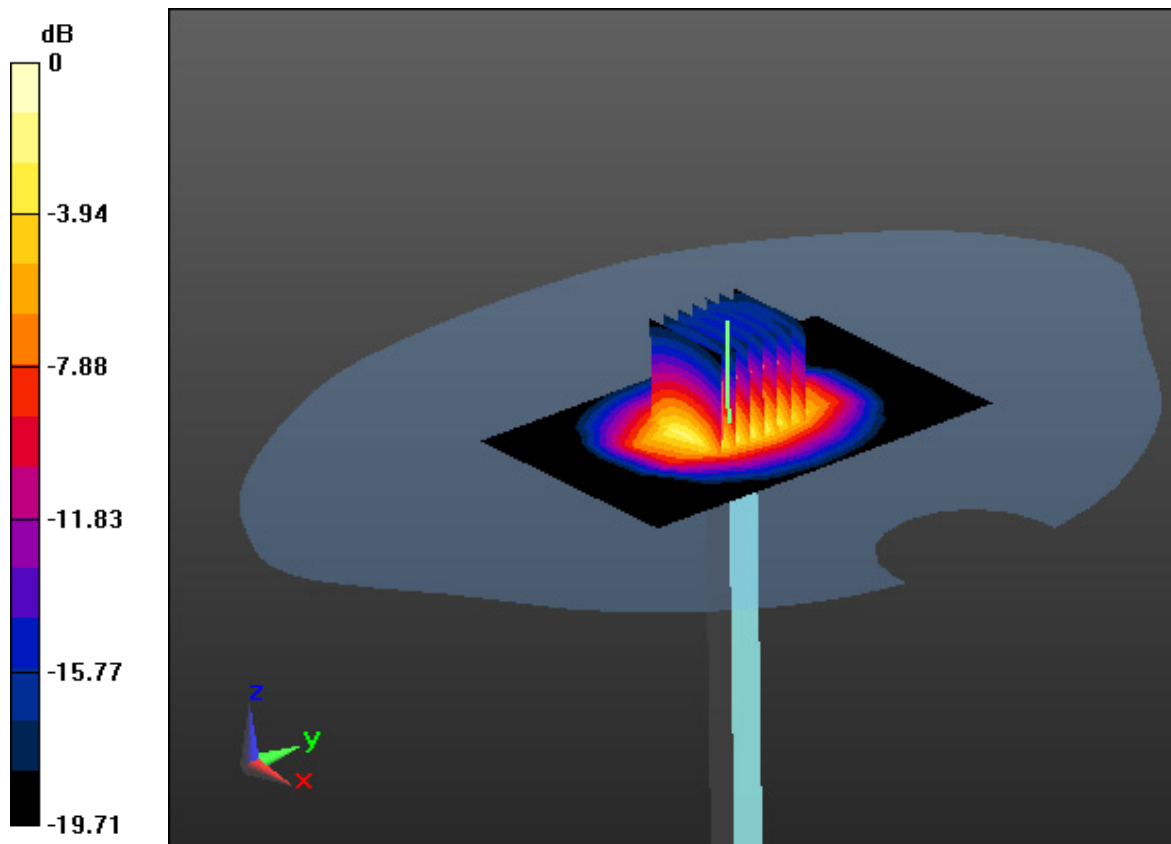
Area Scan (6x9x1): Measurement grid: dx=15mm, dy=15mm

Zoom Scan (7x7x7)/Cube 0: Measurement grid: dx=5mm, dy=5mm, dz=5mm

Power Drift = 0.09 dB

Peak SAR (extrapolated) = 6.9 W/kg

SAR(1 g) = 3.89 W/kg; SAR(10 g) = 2.05 W/kg



0 dB = 4.03 W/kg

DT&C Co., Ltd.

DUT: Dipole 1900 MHz; Type: D1900V2; Serial: D1900V2 - SN5d176

Communication System: UID 0, CW (0); Frequency: 1900 MHz; Duty Cycle: 1:1
Medium parameters used: $f = 1900$ MHz; $\sigma = 1.42$ S/m; $\epsilon_r = 40.853$; $\rho = 1000$ kg/m³
Phantom section: Flat Section

DASY5 Configuration:

Probe: EX3DV4 - SN3866; ConvF(7.8, 7.8, 7.8); Calibrated: 5/27/2020 Electronics: DAE4 Sn1453
Sensor-Surface: 2mm (Mechanical Surface Detection)
Phantom: SAM with CRP v5.0; Type: QD000P40CD; Serial: TP:1837
Measurement SW: DASY52, Version 52.10 (3); SEMCAD X Version 14.6.13 (7474)

Test Date: 2020-08-12; Ambient Temp: 21.1; Tissue Temp: 21.0

1900 MHz System Verification (100 mW)

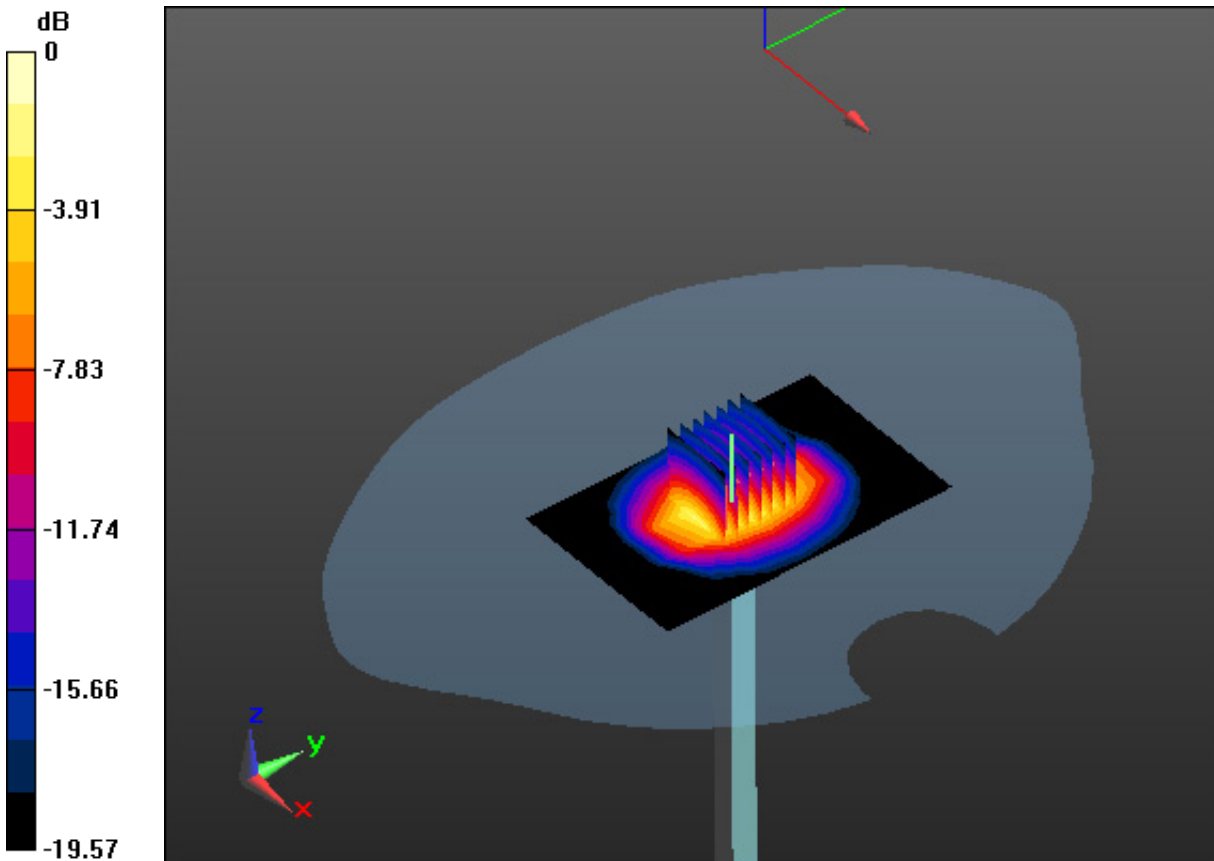
Area Scan (6x9x1): Measurement grid: dx=15mm, dy=15mm

Zoom Scan (7x7x7)/Cube 0: Measurement grid: dx=5mm, dy=5mm, dz=5mm

Power Drift = 0.13 dB

Peak SAR (extrapolated) = 8.27 W/kg

SAR(1 g) = 4.12 W/kg; SAR(10 g) = 2.15 W/kg



0 dB = 5.18 W/kg

DT&C Co., Ltd.

DUT: Dipole 2450 MHz; Type: D2450V2; Serial: D2450V2 - SN:726

Communication System: UID 0, CW (0); Frequency: 2450 MHz; Duty Cycle: 1:1
Medium parameters used: $f = 2450$ MHz; $\sigma = 1.779$ S/m; $\epsilon_r = 38.844$; $\rho = 1000$ kg/m³
Phantom section: Flat Section

DASY5 Configuration:

Probe: EX3DV4 - SN7368; ConvF(7.81, 7.81, 7.81); Calibrated: 1/30/2020 Electronics: DAE4 Sn1335
Sensor-Surface: 2mm (Mechanical Surface Detection)
Phantom: SAM with CRP v5.0; Type: QD000P40CD; Serial: TP:1837
Measurement SW: DASY52, Version 52.10 (3); SEMCAD X Version 14.6.13 (7474)

Test Date: 2020-08-30; Ambient Temp: 20.9; Tissue Temp: 20.7

2450 MHz System Verification (100 mW)

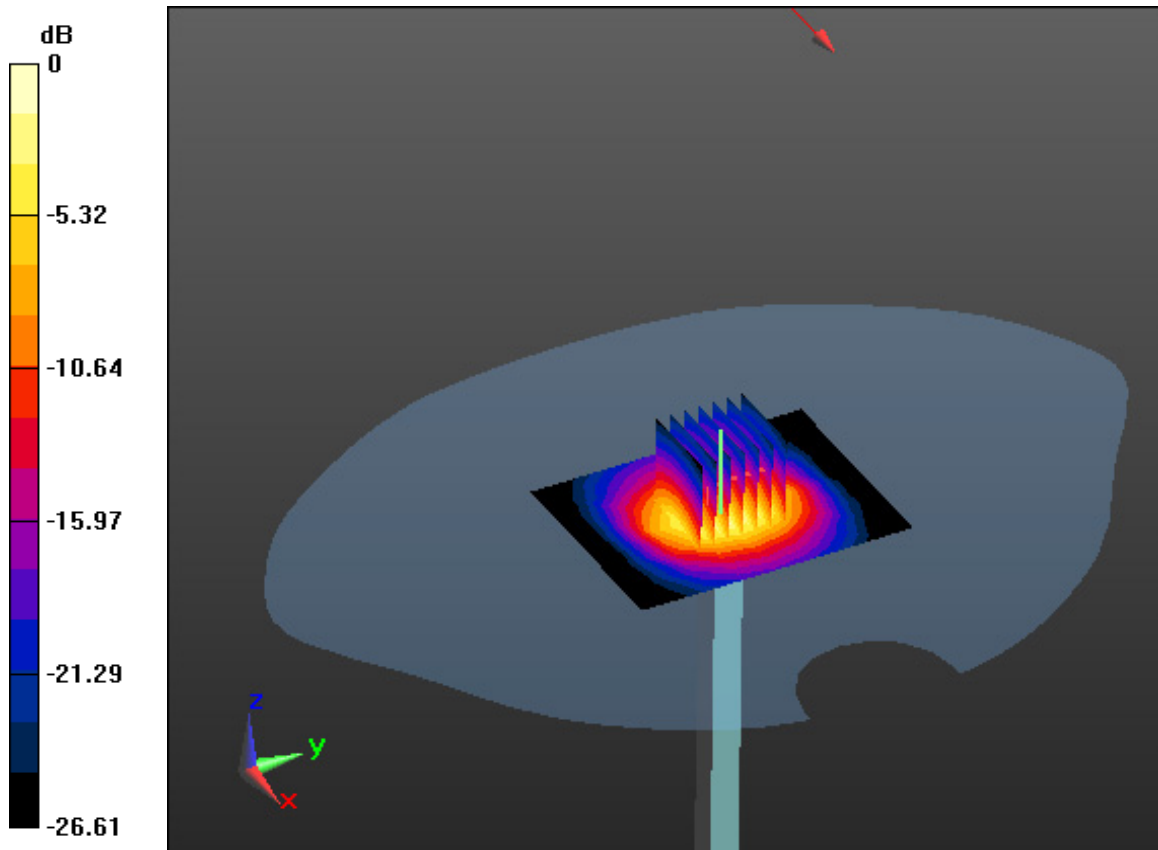
Area Scan (7x9x1): Measurement grid: dx=12mm, dy=12mm

Zoom Scan (7x7x7)/Cube 0: Measurement grid: dx=5mm, dy=5mm, dz=5mm

Power Drift = -0.12 dB

Peak SAR (extrapolated) = 11.8 W/kg

SAR(1 g) = 5.31 W/kg; SAR(10 g) = 2.55 W/kg



0 dB = 7.6 W/kg

DT&C Co., Ltd.

DUT: Dipole 5000 MHz; Type: D5GHzV2; Serial: D5GHzV2 - SN:1212

Communication System: UID 0, CW (0); Frequency: 5300 MHz; Duty Cycle: 1:1
Medium parameters used: $f = 5300$ MHz; $\sigma = 4.853$ S/m; $\epsilon_r = 35.499$; $\rho = 1000$ kg/m³
Phantom section: Flat Section

DASY5 Configuration:

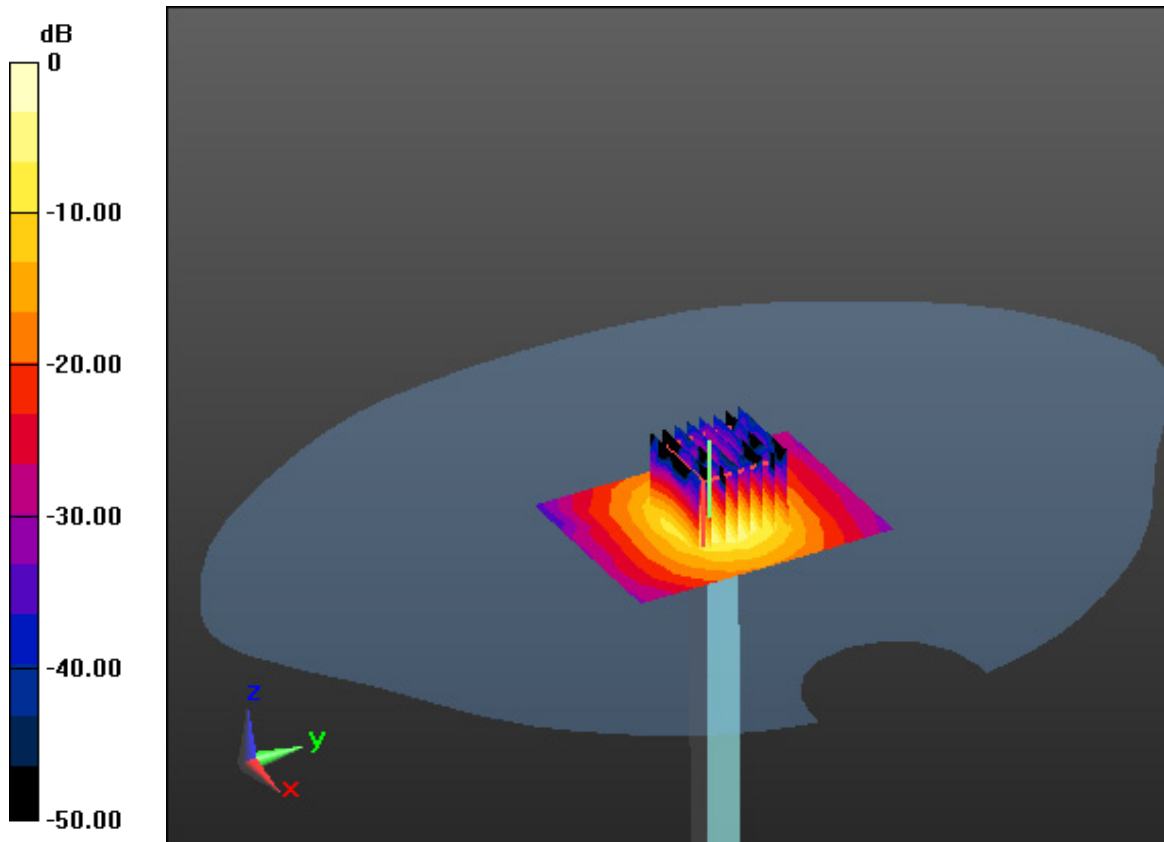
Probe: EX3DV4 - SN7368; ConvF(5.45, 5.45, 5.45); Calibrated: 1/30/2020 Electronics: DAE4 Sn1335
Sensor-Surface: 1.4mm (Mechanical Surface Detection)
Phantom: SAM with CRP v5.0; Type: QD000P40CD; Serial: TP:1837
Measurement SW: DASY52, Version 52.10 (3); SEMCAD X Version 14.6.13 (7474)

Test Date: 2020-08-31; Ambient Temp: 21.4; Tissue Temp: 21.2

5300 MHz System Verification (100 mW)

Area Scan (7x9x1): Measurement grid: dx=10mm, dy=10mm

Zoom Scan (8x8x7)/Cube 0: Measurement grid: dx=4mm, dy=4mm, dz=1.4mm, Graded Ratio:1.4
Power Drift = 0.01 dB
Peak SAR (extrapolated) = 33.6 W/kg
SAR(1 g) = 7.76 W/kg; SAR(10 g) = 2.27 W/kg



0 dB = 18.3 W/kg

DT&C Co., Ltd.

DUT: Dipole 5000 MHz; Type: D5GHzV2; Serial: D5GHzV2 - SN:1212

Communication System: UID 0, CW (0); Frequency: 5600 MHz; Duty Cycle: 1:1
Medium parameters used: $f = 5600$ MHz; $\sigma = 5.138$ S/m; $\epsilon_r = 36.139$; $\rho = 1000$ kg/m³
Phantom section: Flat Section

DASY5 Configuration:

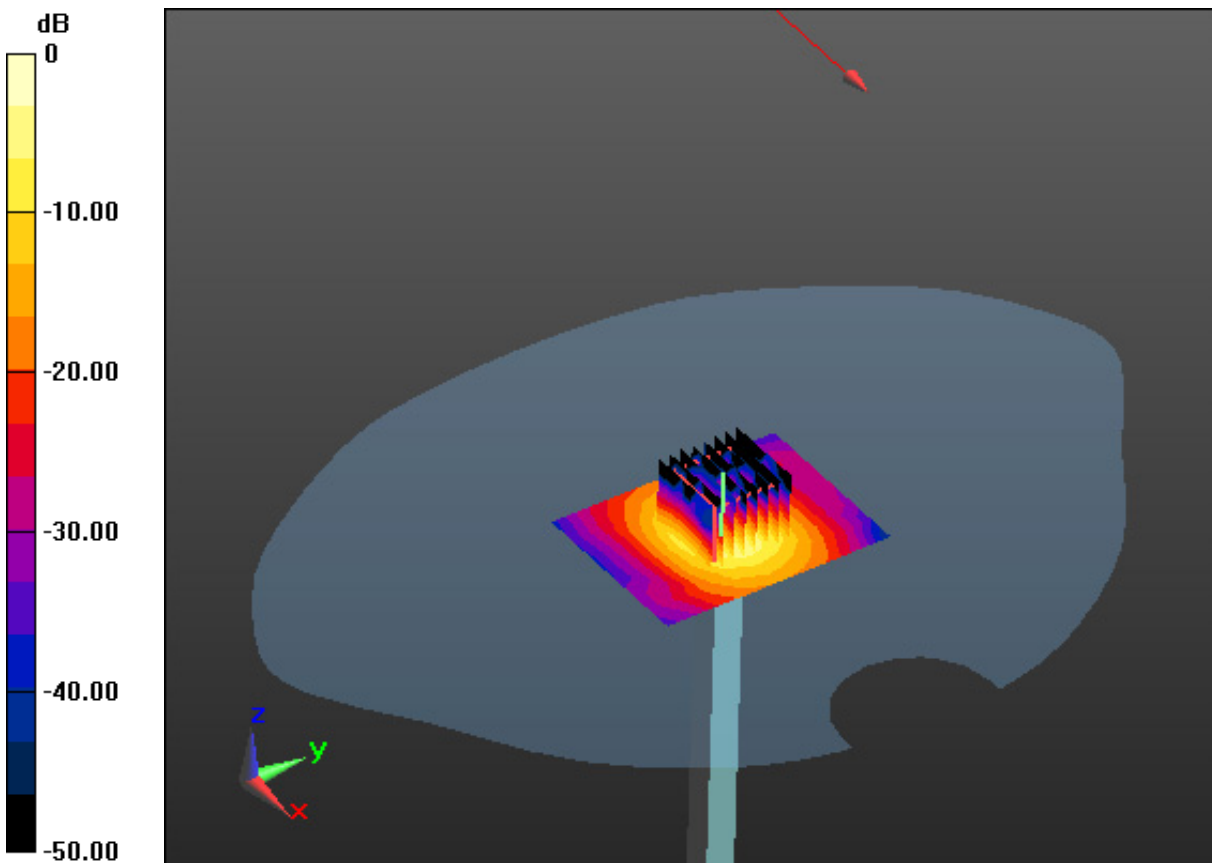
Probe: EX3DV4 - SN7368; ConvF(4.85, 4.85, 4.85); Calibrated: 1/30/2020 Electronics: DAE4 Sn1335
Sensor-Surface: 1.4mm (Mechanical Surface Detection)
Phantom: SAM with CRP v5.0; Type: QD000P40CD; Serial: TP:1837
Measurement SW: DASY52, Version 52.10 (3); SEMCAD X Version 14.6.13 (7474)

Test Date: 2020-09-01; Ambient Temp: 21.2; Tissue Temp: 21.1

5600 MHz System Verification (100 mW)

Area Scan (7x9x1): Measurement grid: dx=10mm, dy=10mm

Zoom Scan (8x8x7)/Cube 0: Measurement grid: dx=4mm, dy=4mm, dz=1.4mm, Graded Ratio:1.4
Power Drift = -0.06 dB
Peak SAR (extrapolated) = 38.2 W/kg
SAR(1 g) = 8.35 W/kg; SAR(10 g) = 2.38 W/kg



DT&C Co., Ltd.

DUT: EB1055; Type: Bar

Communication System: UID 0, PCS 1900 (0); Frequency: 1880 MHz; Duty Cycle: 1:8.3

Medium parameters used: $f = 1880$ MHz; $\sigma = 1.401$ S/m; $\epsilon_r = 40.925$; $\rho = 1000$ kg/m³

Phantom section: Left Section

DASY5 Configuration:

Probe: EX3DV4 - SN3866; ConvF(7.8, 7.8, 7.8); Calibrated: 5/27/2020 Electronics: DAE4 Sn1453

Sensor-Surface: 2mm (Mechanical Surface Detection)

Phantom: SAM with CRP v5.0; Type: QD000P40CD; Serial: TP:1837

Measurement SW: DASY52, Version 52.10 (3); SEMCAD X Version 14.6.13 (7474)

Test Date: 2020-08-12; Ambient Temp: 21.1; Tissue Temp: 21.0

Left Touch, PCS1900 Ch. 661, Ant Internal, Standard Battery

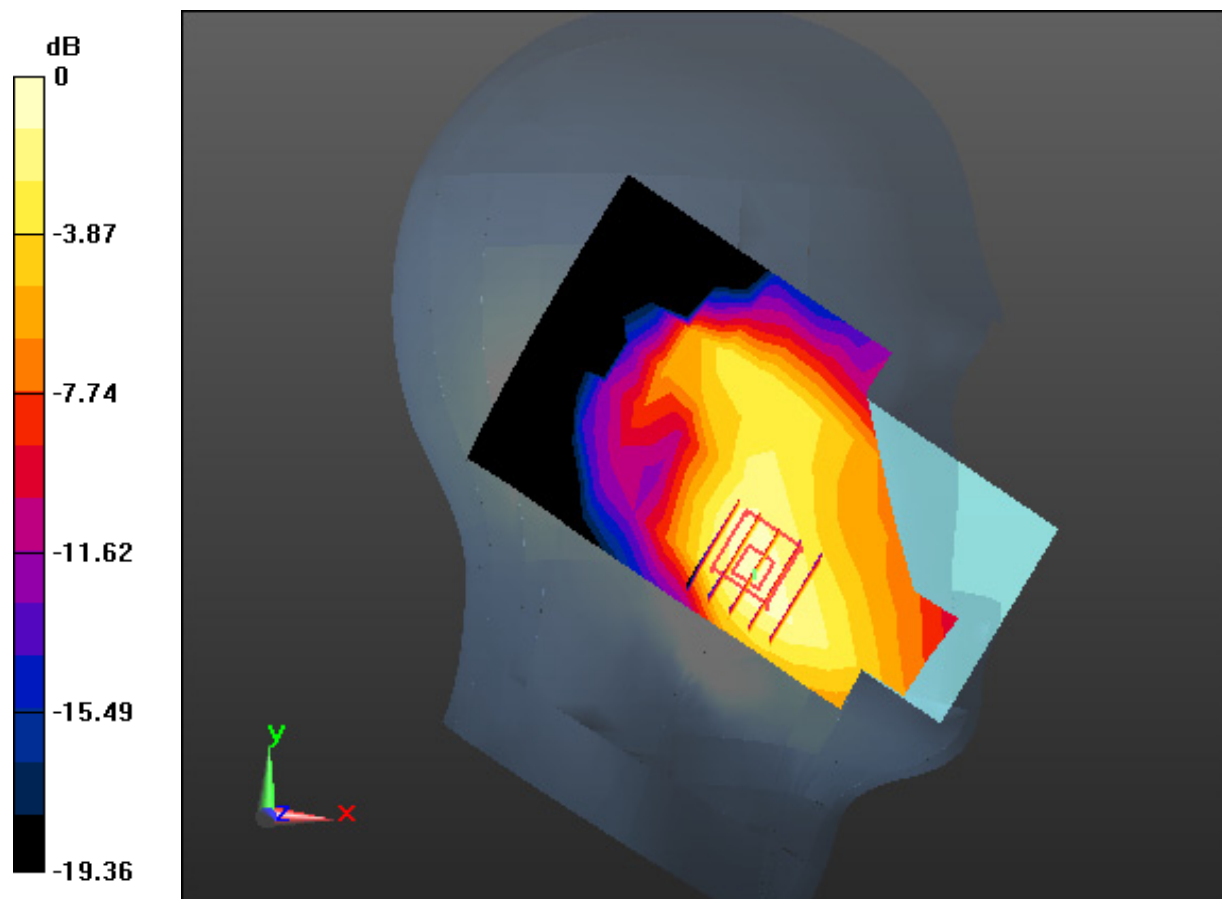
Area Scan (8x13x1): Measurement grid: dx=15mm, dy=15mm

Zoom Scan (5x5x7)/Cube 0: Measurement grid: dx=8mm, dy=8mm, dz=5mm

Power Drift = 0.18 dB

Peak SAR (extrapolated) = 0.114 W/kg

SAR(1 g) = 0.078 W/kg; SAR(10 g) = 0.051 W/kg



0 dB = 0.107 W/kg

DT&C Co., Ltd.

DUT: EB1055; Type: Bar

Communication System: UID 0, PCS 1900 4TX (0); Frequency: 1880 MHz; Duty Cycle: 1:2.075

Medium parameters used: $f = 1880$ MHz; $\sigma = 1.401$ S/m; $\epsilon_r = 40.925$; $\rho = 1000$ kg/m³

Phantom section: Left Section

DASY5 Configuration:

Probe: EX3DV4 - SN3866; ConvF(7.8, 7.8, 7.8); Calibrated: 5/27/2020 Electronics: DAE4 Sn1453

Sensor-Surface: 2mm (Mechanical Surface Detection)

Phantom: SAM with CRP v5.0; Type: QD000P40CD; Serial: TP:1837

Measurement SW: DASY52, Version 52.10 (3); SEMCAD X Version 14.6.13 (7474)

Test Date: 2020-08-12; Ambient Temp: 21.1; Tissue Temp: 21.0

Left Touch, PCS1900 GPRS 4Tx Ch. 661, Ant Internal, Standard Battery

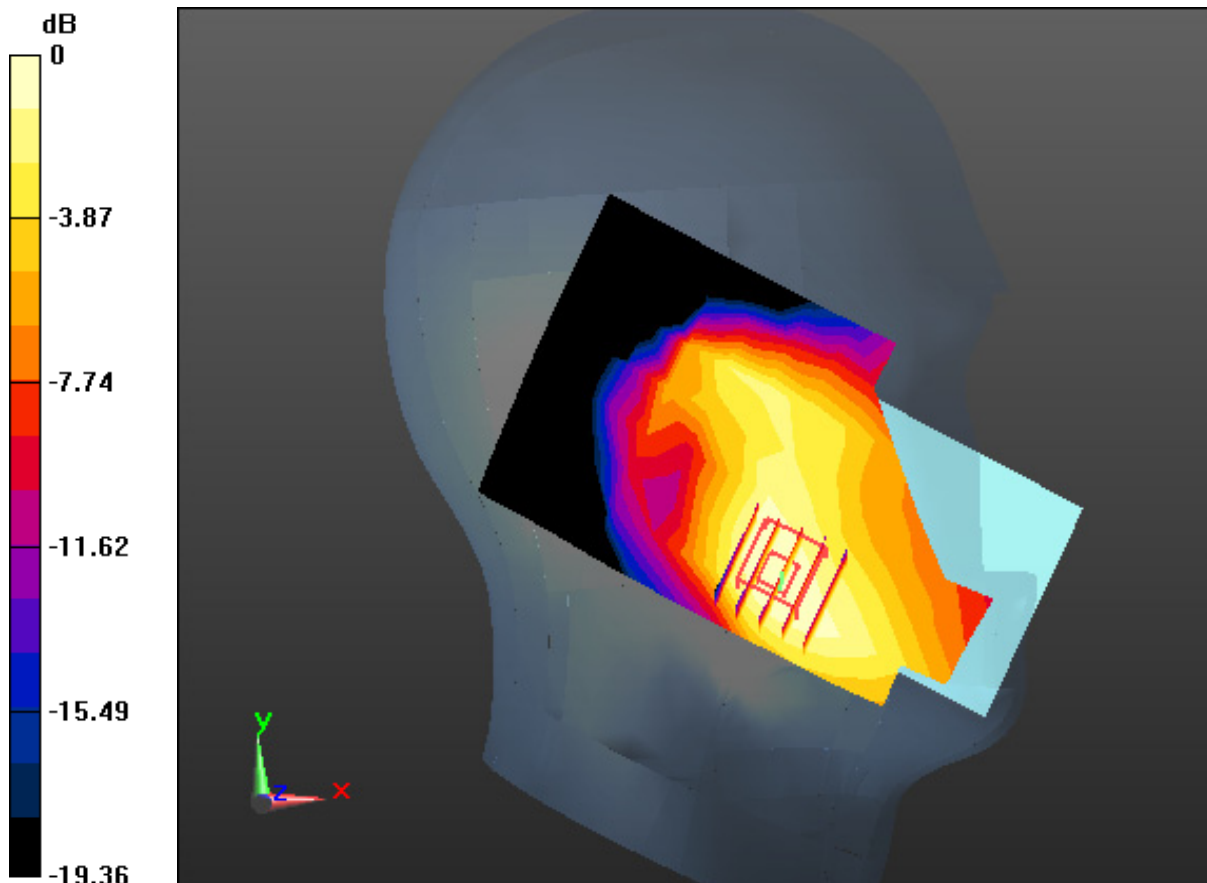
Area Scan (8x13x1): Measurement grid: dx=15mm, dy=15mm

Zoom Scan (5x5x7)/Cube 0: Measurement grid: dx=8mm, dy=8mm, dz=5mm

Power Drift = -0.18 dB

Peak SAR (extrapolated) = 0.126 W/kg

SAR(1 g) = 0.086 W/kg; SAR(10 g) = 0.056 W/kg



0 dB = 0.107 W/kg

DT&C Co., Ltd.

DUT: EB1055; Type: Bar

Communication System: UID 0, WCDMA Band 4 (0); Frequency: 1732.4 MHz; Duty Cycle: 1:1
Medium parameters used: $f = 1732.4$ MHz; $\sigma = 1.332$ S/m; $\epsilon_r = 39.475$; $\rho = 1000$ kg/m³
Phantom section: Left Section

DASY5 Configuration:

Probe: EX3DV4 - SN3866; ConvF(8.01, 8.01, 8.01); Calibrated: 5/27/2020 Electronics: DAE4 Sn1453
Sensor-Surface: 2mm (Mechanical Surface Detection)
Phantom: SAM with CRP v5.0; Type: QD000P40CD; Serial: TP:1837
Measurement SW: DASY52, Version 52.10 (3); SEMCAD X Version 14.6.13 (7474)

Test Date: 2020-08-18; Ambient Temp: 20.8; Tissue Temp: 20.5

Left Touch, WCDMA Band 4 Ch. 1412, Ant Internal, Standard Battery

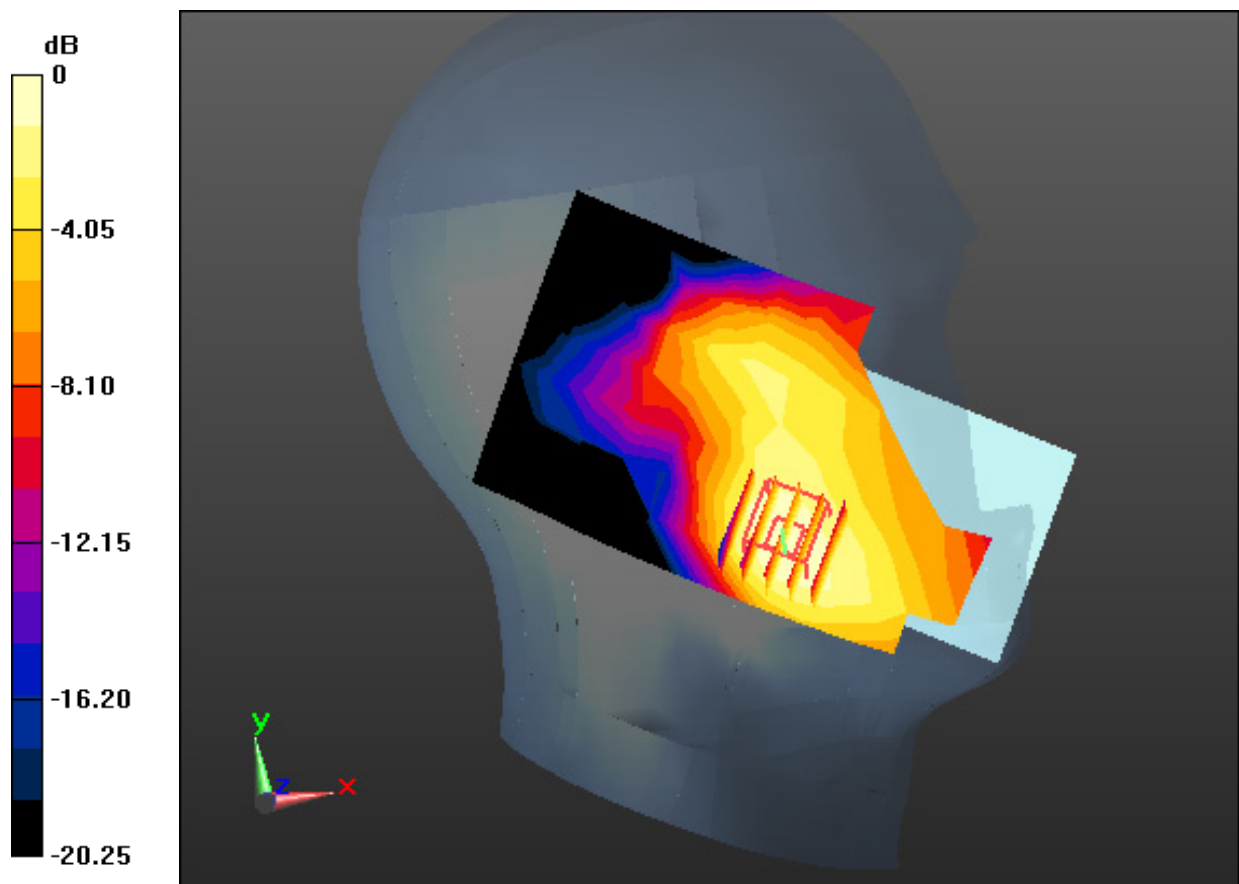
Area Scan (8x13x1): Measurement grid: dx=15mm, dy=15mm

Zoom Scan (5x5x7)/Cube 0: Measurement grid: dx=8mm, dy=8mm, dz=5mm

Power Drift = 0.01 dB

Peak SAR (extrapolated) = 0.215 W/kg

SAR(1 g) = 0.153 W/kg; SAR(10 g) = 0.104 W/kg



0 dB = 0.186 W/kg

DT&C Co., Ltd.

DUT: EB1055; Type: Bar

Communication System: UID 0, WCDMA 1900 (0); Frequency: 1880 MHz; Duty Cycle: 1:1
Medium parameters used: $f = 1880$ MHz; $\sigma = 1.401$ S/m; $\epsilon_r = 40.925$; $\rho = 1000$ kg/m³
Phantom section: Left Section

DASY5 Configuration:

Probe: EX3DV4 - SN3866; ConvF(7.8, 7.8, 7.8); Calibrated: 5/27/2020 Electronics: DAE4 Sn1453
Sensor-Surface: 2mm (Mechanical Surface Detection)
Phantom: SAM with CRP v5.0; Type: QD000P40CD; Serial: TP:1837
Measurement SW: DASY52, Version 52.10 (3); SEMCAD X Version 14.6.13 (7474)

Test Date: 2020-08-12; Ambient Temp: 21.1; Tissue Temp: 21.0

Left Touch, WCDMA Band 2 Ch. 9400, Ant Internal, Standard Battery

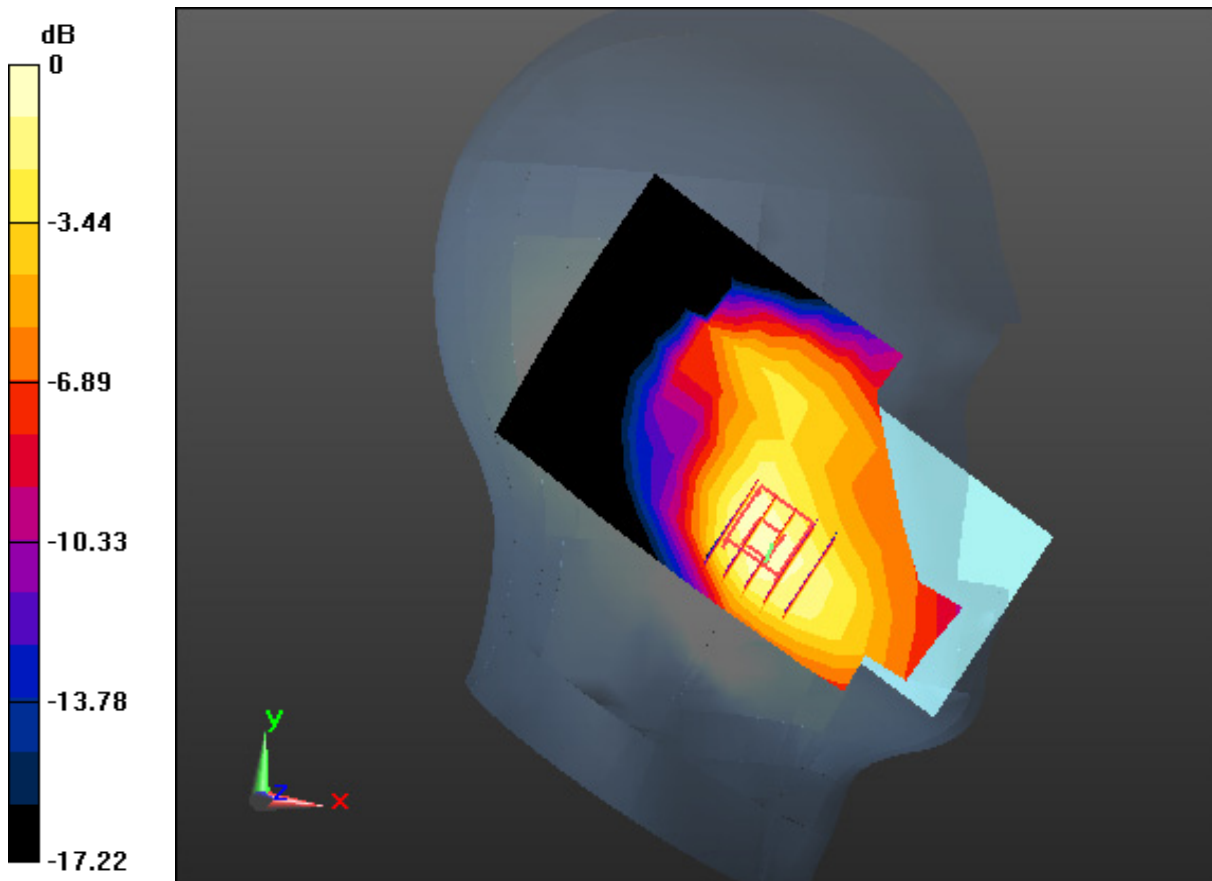
Area Scan (8x13x1): Measurement grid: dx=15mm, dy=15mm

Zoom Scan (5x5x7)/Cube 0: Measurement grid: dx=8mm, dy=8mm, dz=5mm

Power Drift = 0.13 dB

Peak SAR (extrapolated) = 0.311 W/kg

SAR(1 g) = 0.211 W/kg; SAR(10 g) = 0.137 W/kg



0 dB = 0.259 W/kg

DT&C Co., Ltd.

DUT: EB1055; Type: Bar

Communication System: UID 0, LTE Band 4 (0); Frequency: 1732.5 MHz; Duty Cycle: 1:1
Medium parameters used: $f = 1732.5$ MHz; $\sigma = 1.332$ S/m; $\epsilon_r = 39.475$; $\rho = 1000$ kg/m³
Phantom section: Left Section

DASY5 Configuration:

Probe: EX3DV4 - SN7368; ConvF(8.78, 8.78, 8.78); Calibrated: 1/30/2020 Electronics: DAE4 Sn1335
Sensor-Surface: 2mm (Mechanical Surface Detection)
Phantom: SAM with CRP v5.0; Type: QD000P40CD; Serial: TP:1837
Measurement SW: DASY52, Version 52.10 (3); SEMCAD X Version 14.6.13 (7474)

Test Date: 2020-08-18; Ambient Temp: 20.8; Tissue Temp: 20.5

Left Touch, LTE Band 4 Ch. 20175, Ant Internal, Standard Battery

Mode : BandWidth 20 MHz, QPSK, RB Size : 1

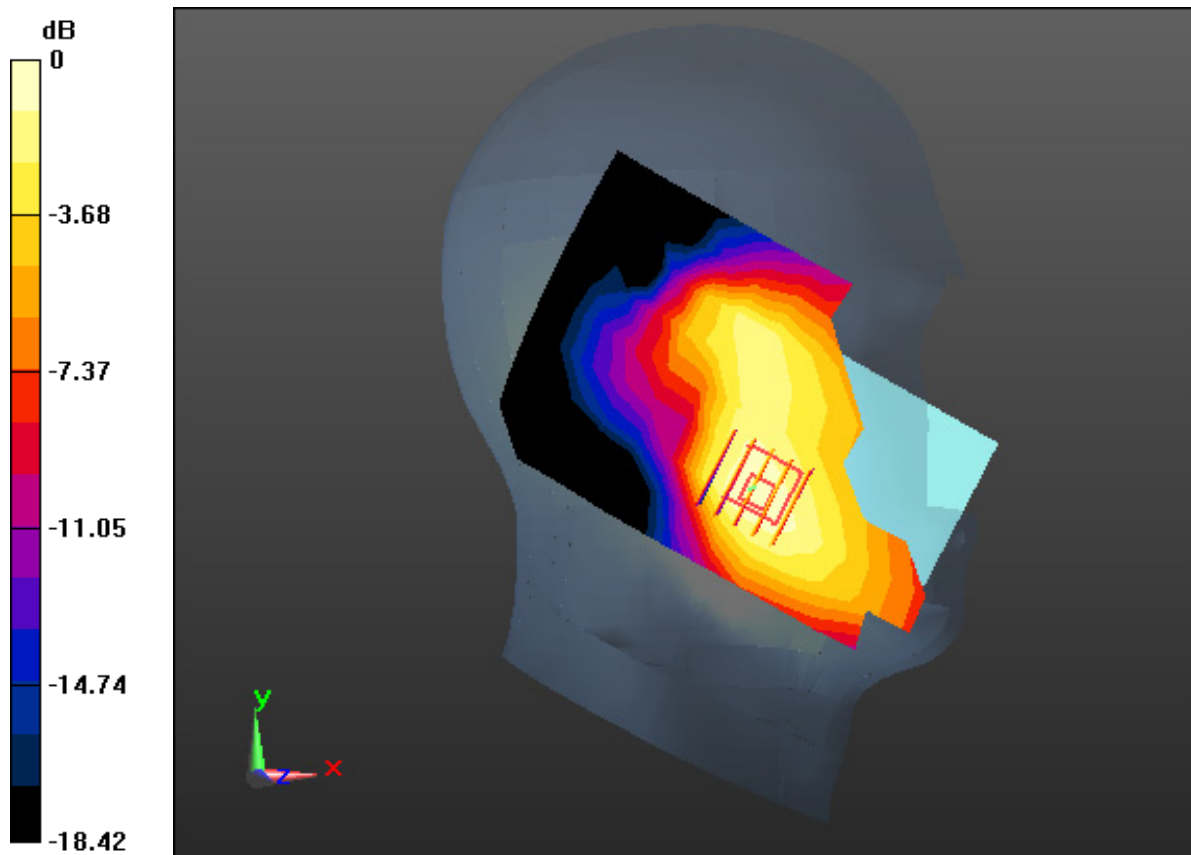
Area Scan (9x16x1): Measurement grid: dx=15mm, dy=15mm

Zoom Scan (5x5x7)/Cube 0: Measurement grid: dx=8mm, dy=8mm, dz=5mm

Power Drift = 0.10 dB

Peak SAR (extrapolated) = 0.218 W/kg

SAR(1 g) = 0.155 W/kg; SAR(10 g) = 0.106 W/kg



0 dB = 0.189 W/kg

DT&C Co., Ltd.

DUT: EB1055; Type: Bar

Communication System: UID 0, LTE Band 2 (0); Frequency: 1880 MHz; Duty Cycle: 1:1
Medium parameters used: $f = 1880$ MHz; $\sigma = 1.401$ S/m; $\epsilon_r = 40.925$; $\rho = 1000$ kg/m³
Phantom section: Left Section

DASY5 Configuration:

Probe: EX3DV4 - SN3866; ConvF(7.8, 7.8, 7.8); Calibrated: 5/27/2020 Electronics: DAE4 Sn1453
Sensor-Surface: 2mm (Mechanical Surface Detection)
Phantom: SAM with CRP v5.0; Type: QD000P40CD; Serial: TP:1837
Measurement SW: DASY52, Version 52.10 (3); SEMCAD X Version 14.6.13 (7474)

Test Date: 2020-08-12; Ambient Temp: 21.1; Tissue Temp: 21.0

Left Touch, LTE Band 2 Ch. 18900, Ant Internal, Standard Battery

Mode : BandWidth 20 MHz, QPSK, RB Size : 1

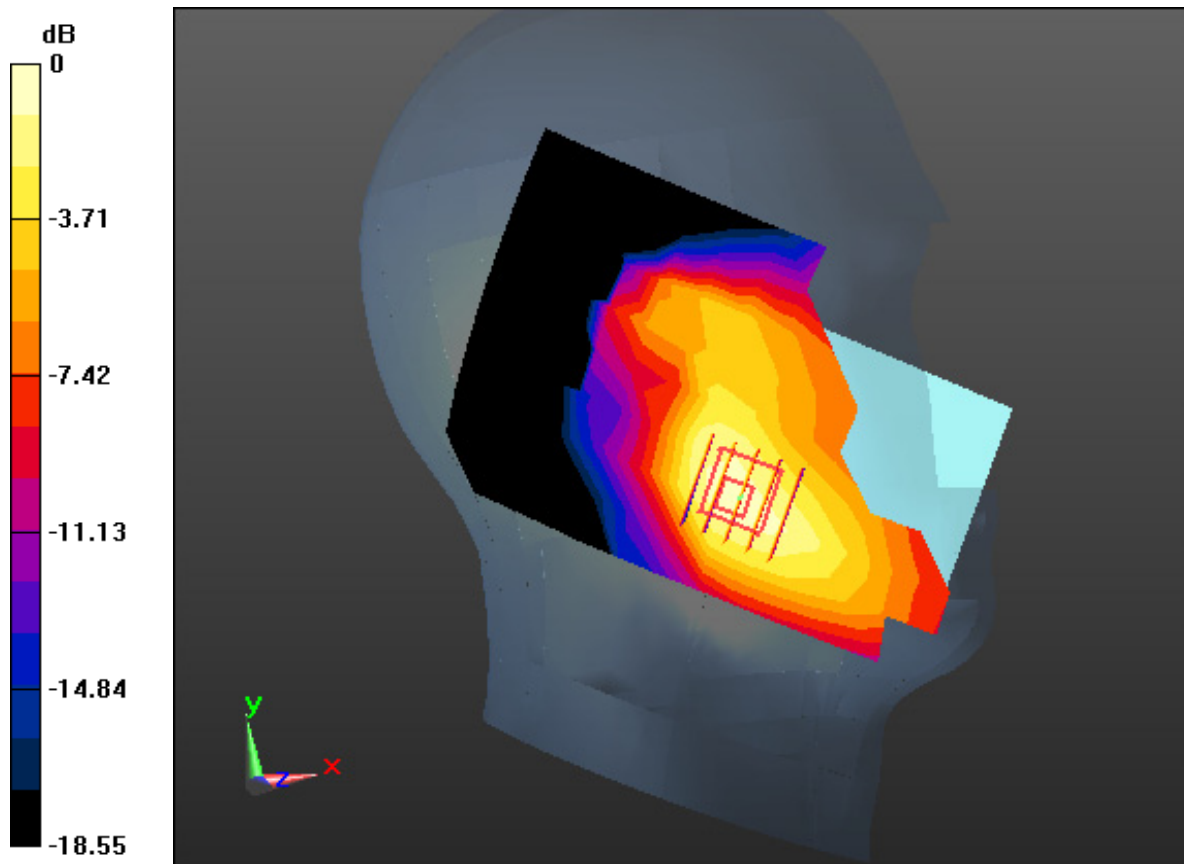
Area Scan (9x16x1): Measurement grid: dx=15mm, dy=15mm

Zoom Scan (5x5x7)/Cube 0: Measurement grid: dx=8mm, dy=8mm, dz=5mm

Power Drift = 0.05 dB

Peak SAR (extrapolated) = 0.271 W/kg

SAR(1 g) = 0.184 W/kg; SAR(10 g) = 0.118 W/kg



0 dB = 0.231 W/kg

DT&C Co., Ltd.

DUT: EB1055; Type: Bar

Communication System: UID 0, W-LAN (0); Frequency: 2412 MHz; Duty Cycle: 1:1
Medium parameters used: $f = 2412$ MHz; $\sigma = 1.734$ S/m; $\epsilon_r = 38.951$; $\rho = 1000$ kg/m³
Phantom section: Left Section

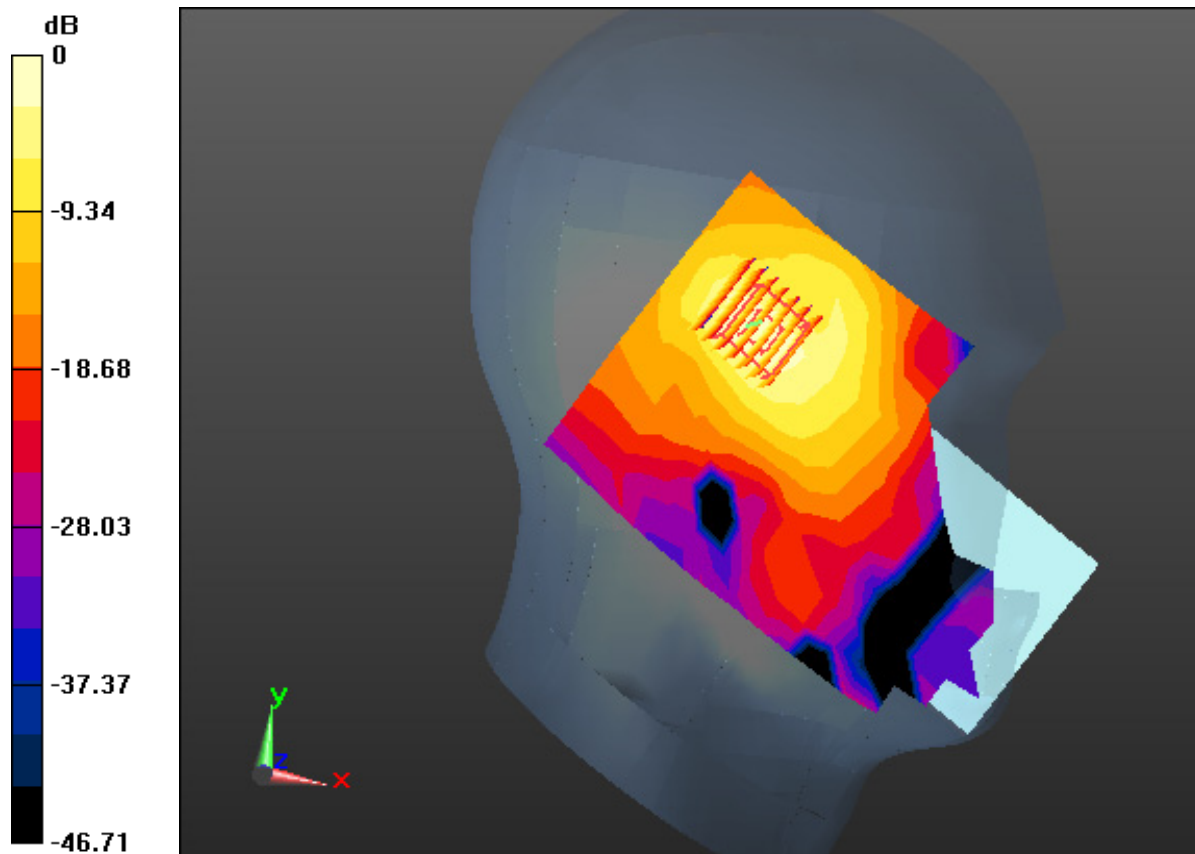
DASY5 Configuration:

Probe: EX3DV4 - SN7368; ConvF(7.81, 7.81, 7.81); Calibrated: 1/30/2020 Electronics: DAE4 Sn1335
Sensor-Surface: 2mm (Mechanical Surface Detection)
Phantom: SAM with CRP v5.0; Type: QD000P40CD; Serial: TP:1837
Measurement SW: DASY52, Version 52.10 (3); SEMCAD X Version 14.6.13 (7474)

Test Date: 2020-08-30; Ambient Temp: 20.9; Tissue Temp: 20.7

Left Touch, WLAN(802.11b) Ch. 1, Ant Internal, Standard Battery

Area Scan (11x17x1): Measurement grid: dx=12mm, dy=12mm
Zoom Scan (7x7x7)/Cube 0: Measurement grid: dx=5mm, dy=5mm, dz=5mm
Power Drift = -0.09 dB
Peak SAR (extrapolated) = 0.518 W/kg
SAR(1 g) = 0.259 W/kg; SAR(10 g) = 0.121 W/kg



0 dB = 0.370 W/kg

DT&C Co., Ltd.

DUT: EB1055; Type: Bar

Communication System: UID 0, W-LAN(5G) (0); Frequency: 5290 MHz; Duty Cycle: 1:1

Medium parameters used: $f = 5290$ MHz; $\sigma = 4.843$ S/m; $\epsilon_r = 35.526$; $\rho = 1000$ kg/m³

Phantom section: Right Section

DASY5 Configuration:

Probe: EX3DV4 - SN7368; ConvF(5.45, 5.45, 5.45); Calibrated: 1/30/2020 Electronics: DAE4 Sn1335

Sensor-Surface: 1.4mm (Mechanical Surface Detection)

Phantom: SAM with CRP v5.0; Type: QD000P40CD; Serial: TP:1837

Measurement SW: DASY52, Version 52.10 (3); SEMCAD X Version 14.6.13 (7474)

Test Date: 2020-08-31; Ambient Temp: 21.4; Tissue Temp: 21.2

Right Touch, WLAN(802.11ac VHT80) Ch. 58, Ant Internal, Standard Battery

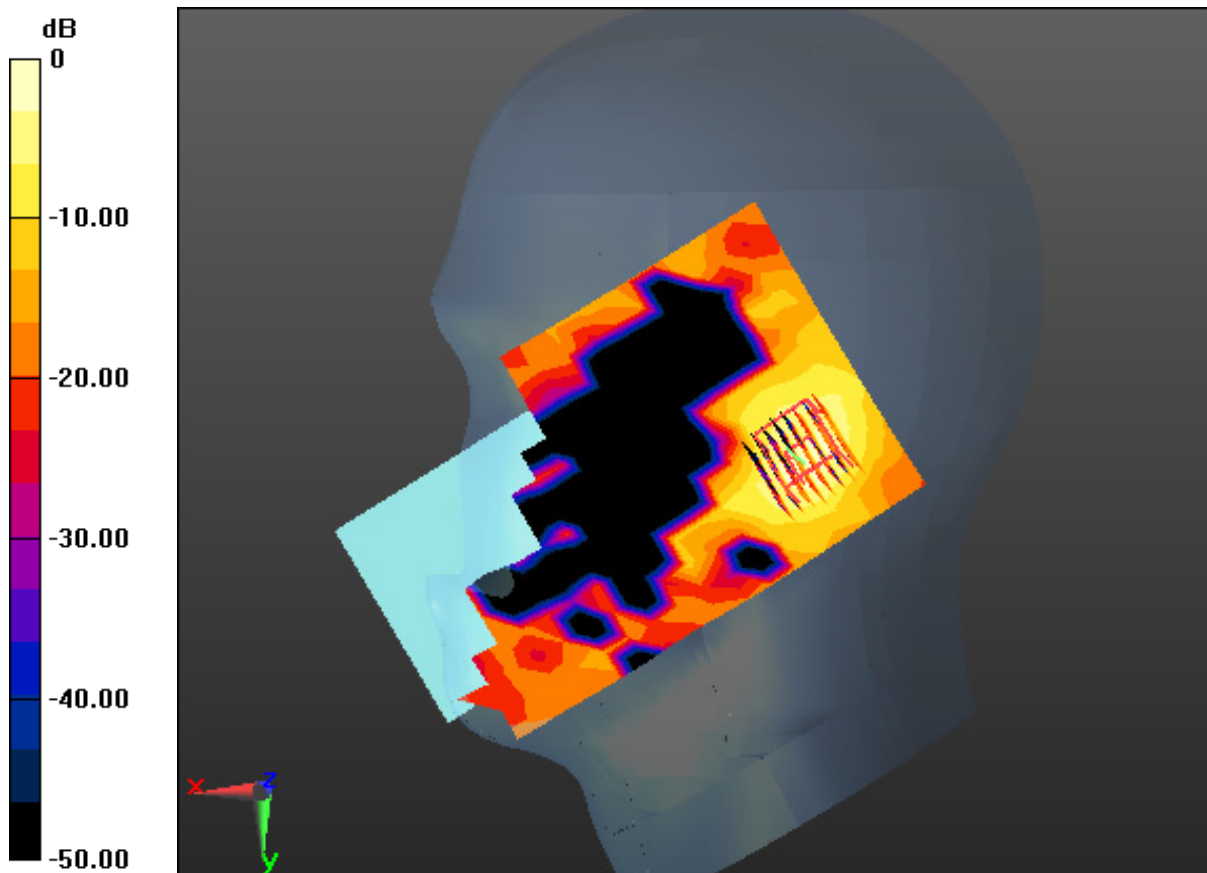
Area Scan (12x21x1): Measurement grid: dx=10mm, dy=10mm

Zoom Scan (8x8x7)/Cube 0: Measurement grid: dx=4mm, dy=4mm, dz=1.4mm, Graded Ratio:1.4

Power Drift = -0.07 dB

Peak SAR (extrapolated) = 0.267 W/kg

SAR(1 g) = 0.073 W/kg; SAR(10 g) = 0.023 W/kg



0 dB = 0.179 W/kg

DT&C Co., Ltd.

DUT: EB1055; Type: Bar

Communication System: UID 0, W-LAN(5G) (0); Frequency: 5690 MHz; Duty Cycle: 1:1

Medium parameters used: $f = 5690$ MHz; $\sigma = 5.242$ S/m; $\epsilon_r = 35.985$; $\rho = 1000$ kg/m³

Phantom section: Right Section

DASY5 Configuration:

Probe: EX3DV4 - SN7368; ConvF(4.85, 4.85, 4.85); Calibrated: 1/30/2020 Electronics: DAE4 Sn1335

Sensor-Surface: 1.4mm (Mechanical Surface Detection)

Phantom: SAM with CRP v5.0; Type: QD000P40CD; Serial: TP:1837

Measurement SW: DASY52, Version 52.10 (3); SEMCAD X Version 14.6.13 (7474)

Test Date: 2020-09-01; Ambient Temp: 21.2; Tissue Temp: 21.1

Right Touch, WLAN(802.11ac VHT80) Ch. 138, Ant Internal, Standard Battery

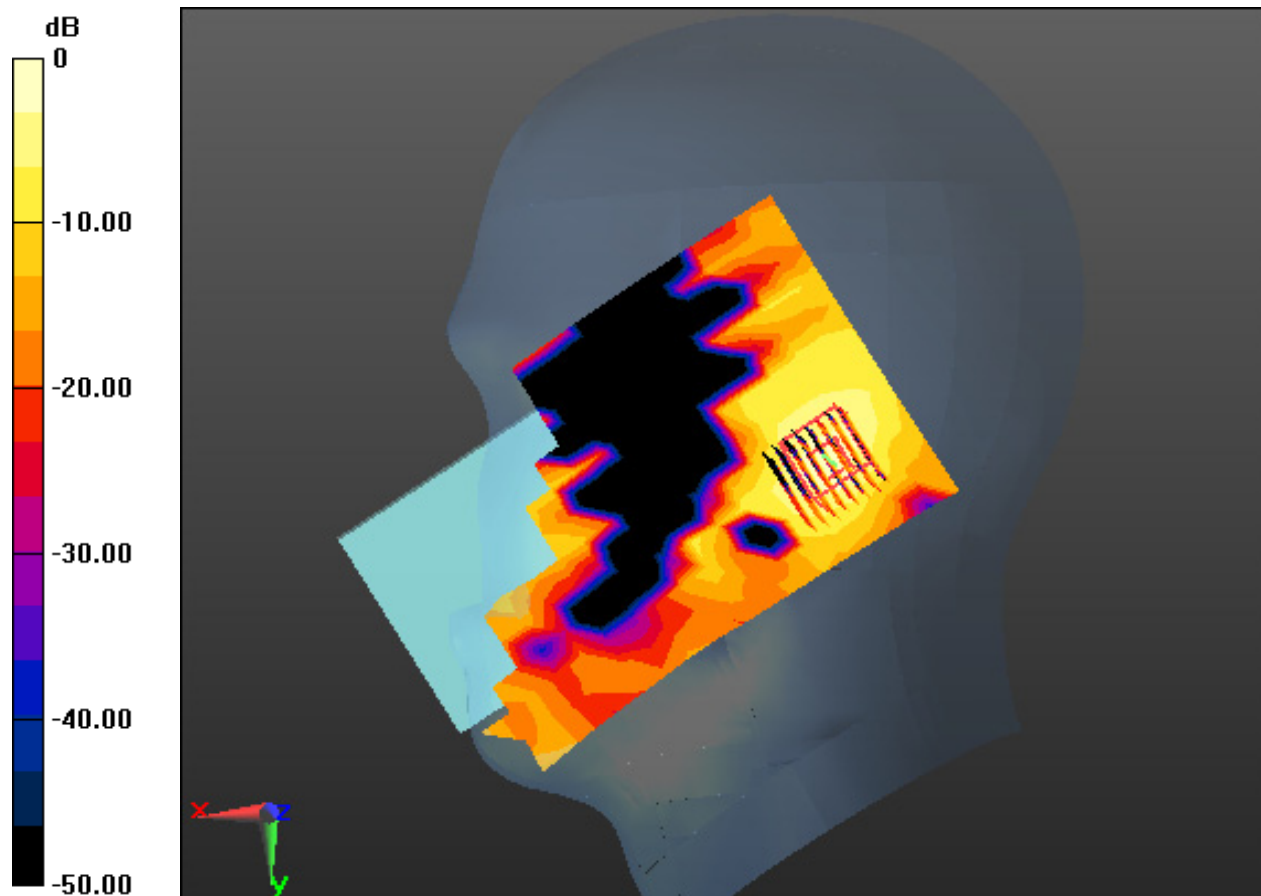
Area Scan (12x21x1): Measurement grid: dx=10mm, dy=10mm

Zoom Scan (8x8x7)/Cube 0: Measurement grid: dx=4mm, dy=4mm, dz=1.4mm, Graded Ratio:1.4

Power Drift = 0.00 dB

Peak SAR (extrapolated) = 0.346 W/kg

SAR(1 g) = 0.098 W/kg; SAR(10 g) = 0.030 W/kg



0 dB = 0.229 W/kg

DT&C Co., Ltd.

DUT: EB1055; Type: Bar

Communication System: UID 0, Bluetooth (0); Frequency: 2441 MHz; Duty Cycle: 1:1.302

Medium parameters used: $f = 2441$ MHz; $\sigma = 1.77$ S/m; $\epsilon_r = 38.87$; $\rho = 1000$ kg/m³

Phantom section: Left Section

DASY5 Configuration:

Probe: EX3DV4 - SN7368; ConvF(7.81, 7.81, 7.81); Calibrated: 1/30/2020 Electronics: DAE4 Sn1335

Sensor-Surface: 2mm (Mechanical Surface Detection)

Phantom: SAM with CRP v5.0; Type: QD000P40CD; Serial: TP:1837

Measurement SW: DASY52, Version 52.10 (3); SEMCAD X Version 14.6.13 (7474)

Test Date: 2020-08-30; Ambient Temp: 20.9; Tissue Temp: 20.7

Left Touch, Bluetooth 1Mbps Ch. 39, Ant Internal, Standard Battery

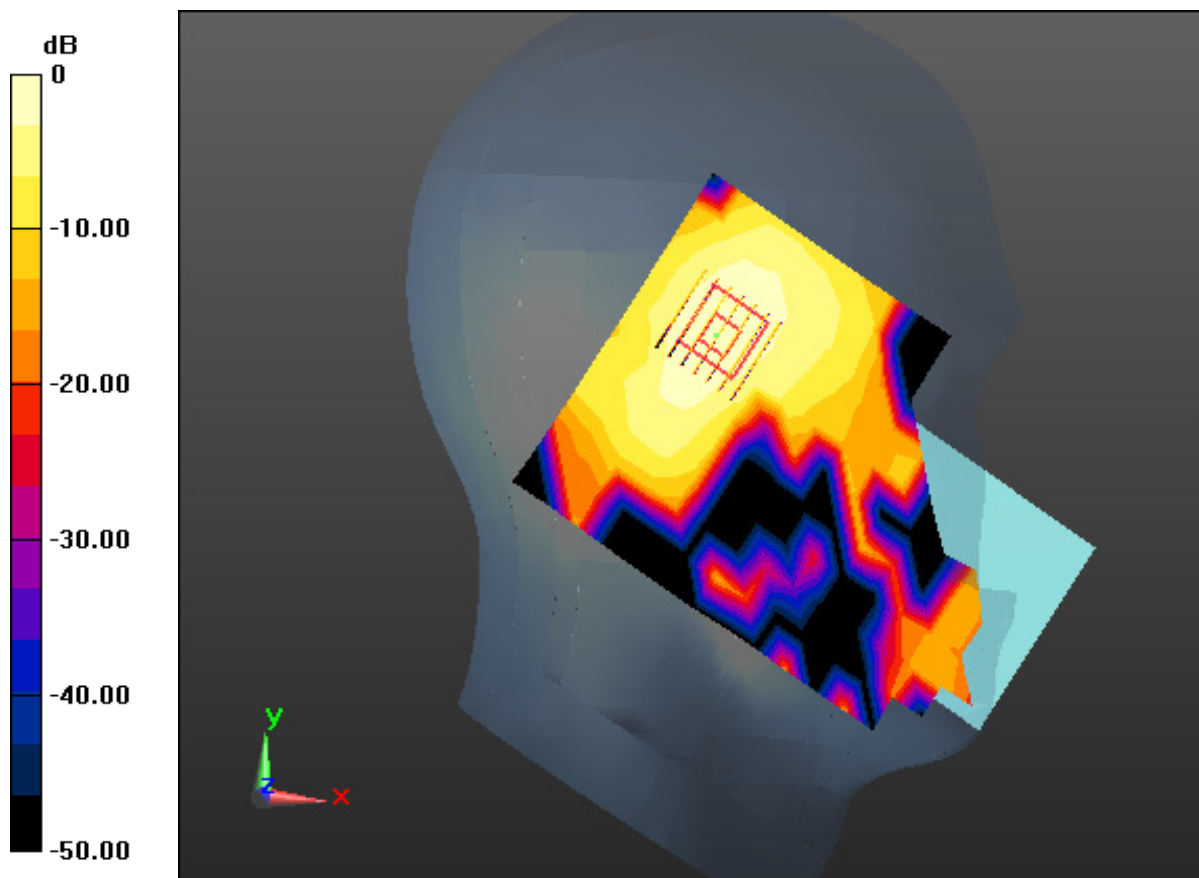
Area Scan (11x17x1): Measurement grid: dx=12mm, dy=12mm

Zoom Scan (7x7x7)/Cube 0: Measurement grid: dx=5mm, dy=5mm, dz=5mm

Power Drift = 0.00 dB

Peak SAR (extrapolated) = 0.122 W/kg

SAR(1 g) = 0.026 W/kg; SAR(10 g) = 0.010 W/kg



0 dB = 0.0372 W/kg

DT&C Co., Ltd.

DUT: EB1055; Type: Bar

Communication System: UID 0, PCS 1900 (0); Frequency: 1880 MHz; Duty Cycle: 1:8.3

Medium parameters used: $f = 1880$ MHz; $\sigma = 1.401$ S/m; $\epsilon_r = 40.925$; $\rho = 1000$ kg/m³

Phantom section: Flat Section

DASY5 Configuration:

Probe: EX3DV4 - SN3866; ConvF(7.8, 7.8, 7.8); Calibrated: 5/27/2020 Electronics: DAE4 Sn1453

Sensor-Surface: 2mm (Mechanical Surface Detection)

Phantom: SAM with CRP v5.0; Type: QD000P40CD; Serial: TP:1837

Measurement SW: DASY52, Version 52.10 (3); SEMCAD X Version 14.6.13 (7474)

Test Date: 2020-08-12; Ambient Temp: 21.1; Tissue Temp: 21.0

1 cm space from Body, Rear, PCS1900 Ch. 661, Ant Internal

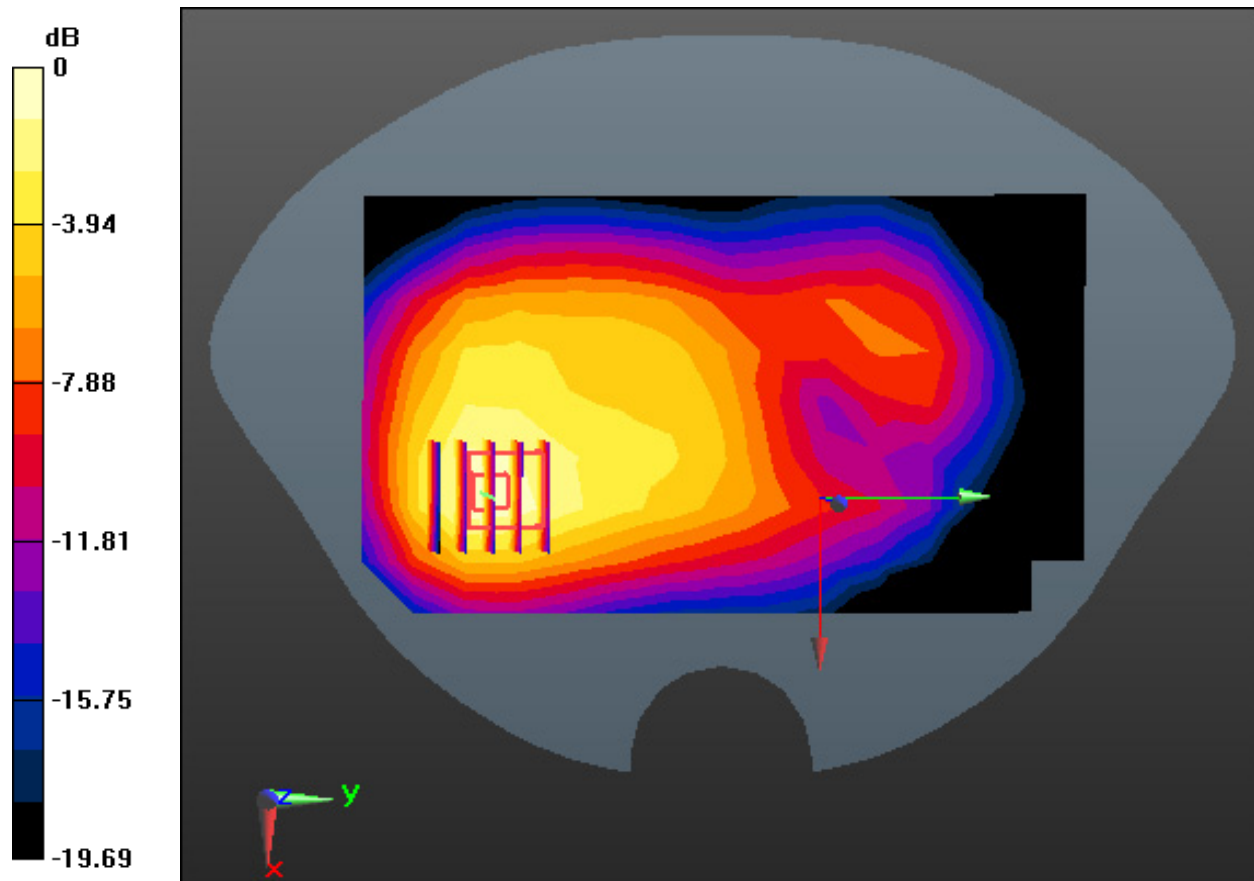
Area Scan (9x15x1): Measurement grid: dx=15mm, dy=15mm

Zoom Scan (5x5x7)/Cube 0: Measurement grid: dx=8mm, dy=8mm, dz=5mm

Power Drift = 0.05 dB

Peak SAR (extrapolated) = 0.428 W/kg

SAR(1 g) = 0.264 W/kg; SAR(10 g) = 0.155 W/kg



0 dB = 0.346 W/kg

DT&C Co., Ltd.

DUT: EB1055; Type: Bar

Communication System: UID 0, PCS 1900 4TX (0); Frequency: 1880 MHz; Duty Cycle: 1:2.075

Medium parameters used: $f = 1880$ MHz; $\sigma = 1.401$ S/m; $\epsilon_r = 40.925$; $\rho = 1000$ kg/m³

Phantom section: Flat Section

DASY5 Configuration:

Probe: EX3DV4 - SN3866; ConvF(7.8, 7.8, 7.8); Calibrated: 5/27/2020 Electronics: DAE4 Sn1453

Sensor-Surface: 2mm (Mechanical Surface Detection)

Phantom: SAM with CRP v5.0; Type: QD000P40CD; Serial: TP:1837

Measurement SW: DASY52, Version 52.10 (3); SEMCAD X Version 14.6.13 (7474)

Test Date: 2020-08-12; Ambient Temp: 21.1; Tissue Temp: 21.0

1 cm space from Body, Rear, PCS1900 GPRS 4Tx Ch. 661, Ant Internal

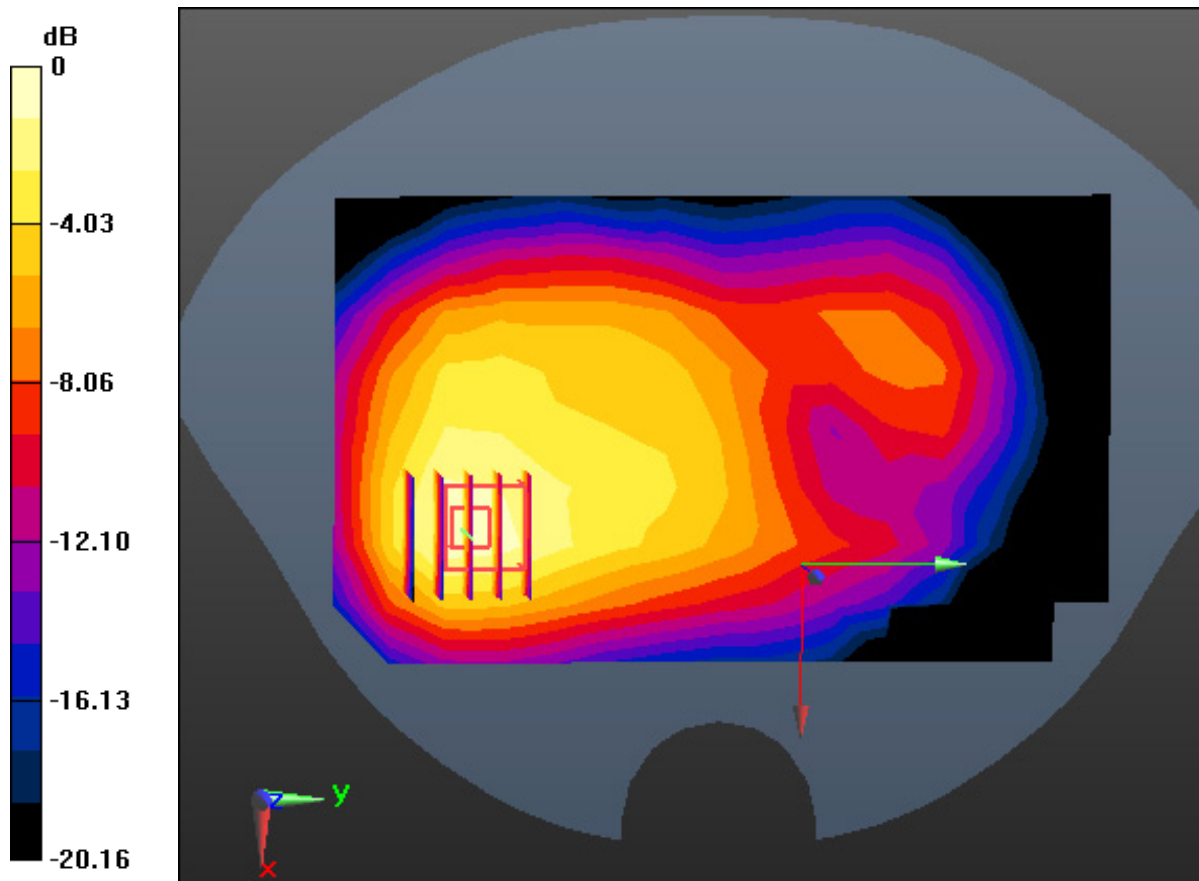
Area Scan (9x15x1): Measurement grid: dx=15mm, dy=15mm

Zoom Scan (5x5x7)/Cube 0: Measurement grid: dx=8mm, dy=8mm, dz=5mm

Power Drift = 0.08 dB

Peak SAR (extrapolated) = 0.465 W/kg

SAR(1 g) = 0.284 W/kg; SAR(10 g) = 0.168 W/kg



0 dB = 0.379 W/kg

DT&C Co., Ltd.

DUT: EB1055; Type: Bar

Communication System: UID 0, WCDMA Band 4 (0); Frequency: 1732.4 MHz; Duty Cycle: 1:1
Medium parameters used: $f = 1732.4$ MHz; $\sigma = 1.332$ S/m; $\epsilon_r = 39.475$; $\rho = 1000$ kg/m³
Phantom section: Flat Section

DASY5 Configuration:

Probe: EX3DV4 - SN3866; ConvF(8.01, 8.01, 8.01); Calibrated: 5/27/2020 Electronics: DAE4 Sn1453
Sensor-Surface: 2mm (Mechanical Surface Detection)
Phantom: SAM with CRP v5.0; Type: QD000P40CD; Serial: TP:1837
Measurement SW: DASY52, Version 52.10 (3); SEMCAD X Version 14.6.13 (7474)

Test Date: 2020-08-18; Ambient Temp: 20.8; Tissue Temp: 20.5

1 cm space from Body, Rear, WCDMA Band 4 Ch. 1412, Ant. Internal

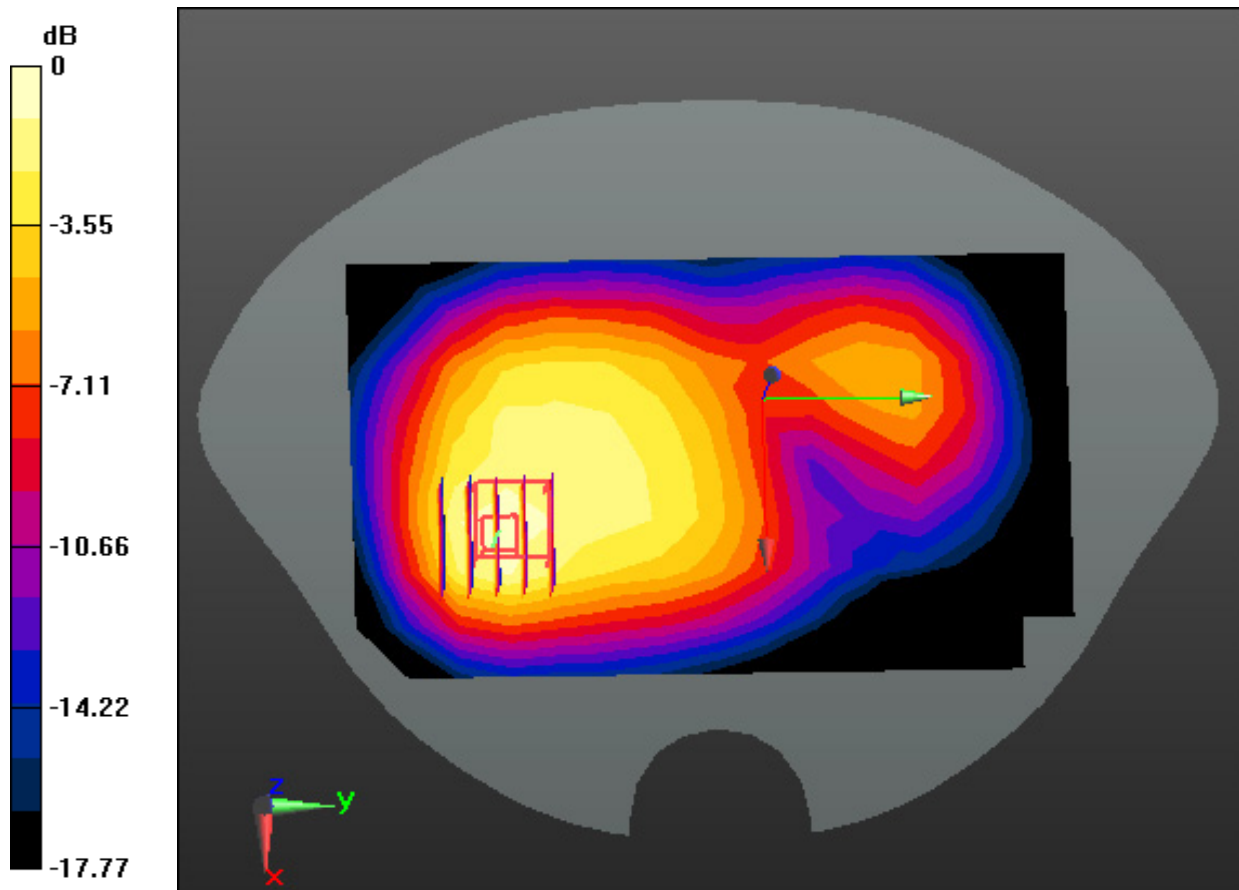
Area Scan (9x15x1): Measurement grid: dx=15mm, dy=15mm

Zoom Scan (5x5x7)/Cube 0: Measurement grid: dx=8mm, dy=8mm, dz=5mm

Power Drift = -0.04 dB

Peak SAR (extrapolated) = 0.512 W/kg

SAR(1 g) = 0.318 W/kg; SAR(10 g) = 0.194 W/kg



0 dB = 0.415 W/kg

DT&C Co., Ltd.

DUT: EB1055; Type: Bar

Communication System: UID 0, WCDMA 1900 (0); Frequency: 1907.6 MHz; Duty Cycle: 1:1
Medium parameters used: $f = 1907.6$ MHz; $\sigma = 1.427$ S/m; $\epsilon_r = 40.824$; $\rho = 1000$ kg/m³
Phantom section: Flat Section

DASY5 Configuration:

Probe: EX3DV4 - SN3866; ConvF(7.8, 7.8, 7.8); Calibrated: 5/27/2020 Electronics: DAE4 Sn1453
Sensor-Surface: 2mm (Mechanical Surface Detection)
Phantom: SAM with CRP v5.0; Type: QD000P40CD; Serial: TP:1837
Measurement SW: DASY52, Version 52.10 (3); SEMCAD X Version 14.6.13 (7474)

Test Date: 2020-08-12; Ambient Temp: 21.1; Tissue Temp: 21.0

1 cm space from Body, Front, WCDMA Band 2 Ch. 9538, Ant. Internal

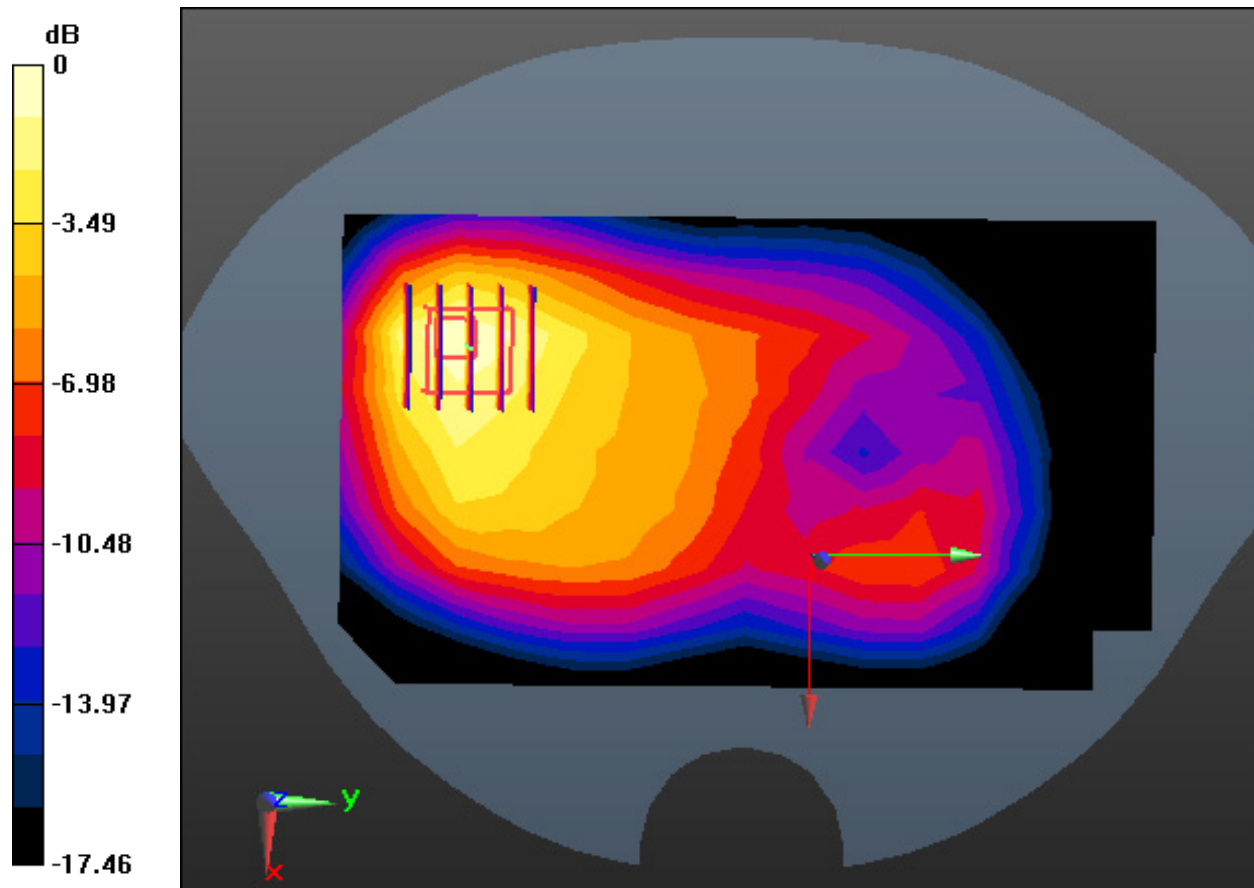
Area Scan (9x15x1): Measurement grid: dx=15mm, dy=15mm

Zoom Scan (5x5x7)/Cube 0: Measurement grid: dx=8mm, dy=8mm, dz=5mm

Power Drift = -0.00 dB

Peak SAR (extrapolated) = 1.25 W/kg

SAR(1 g) = 0.717 W/kg; SAR(10 g) = 0.411 W/kg



0 dB = 0.947 W/kg

DT&C Co., Ltd

DUT: EB1055; Type: Bar

Communication System: UID 0, LTE Band 4 (0); Frequency: 1732.5 MHz; Duty Cycle: 1:1
Medium parameters used: $f = 1732.5$ MHz; $\sigma = 1.332$ S/m; $\epsilon_r = 39.475$; $\rho = 1000$ kg/m³
Phantom section: Flat Section

DASY5 Configuration:

Probe: EX3DV4 - SN7368; ConvF(8.78, 8.78, 8.78); Calibrated: 1/30/2020 Electronics: DAE4 Sn1335
Sensor-Surface: 2mm (Mechanical Surface Detection)
Phantom: SAM with CRP v5.0; Type: QD000P40CD; Serial: TP:1837
Measurement SW: DASY52, Version 52.10 (3); SEMCAD X Version 14.6.13 (7474)

Test Date: 2020-08-18; Ambient Temp: 20.8; Tissue Temp: 20.5

1 cm space from Body, Rear, LTE Band 4 Ch. 20175, Ant Internal

Mode : BandWidth 20 MHz, QPSK, RB Size : 1

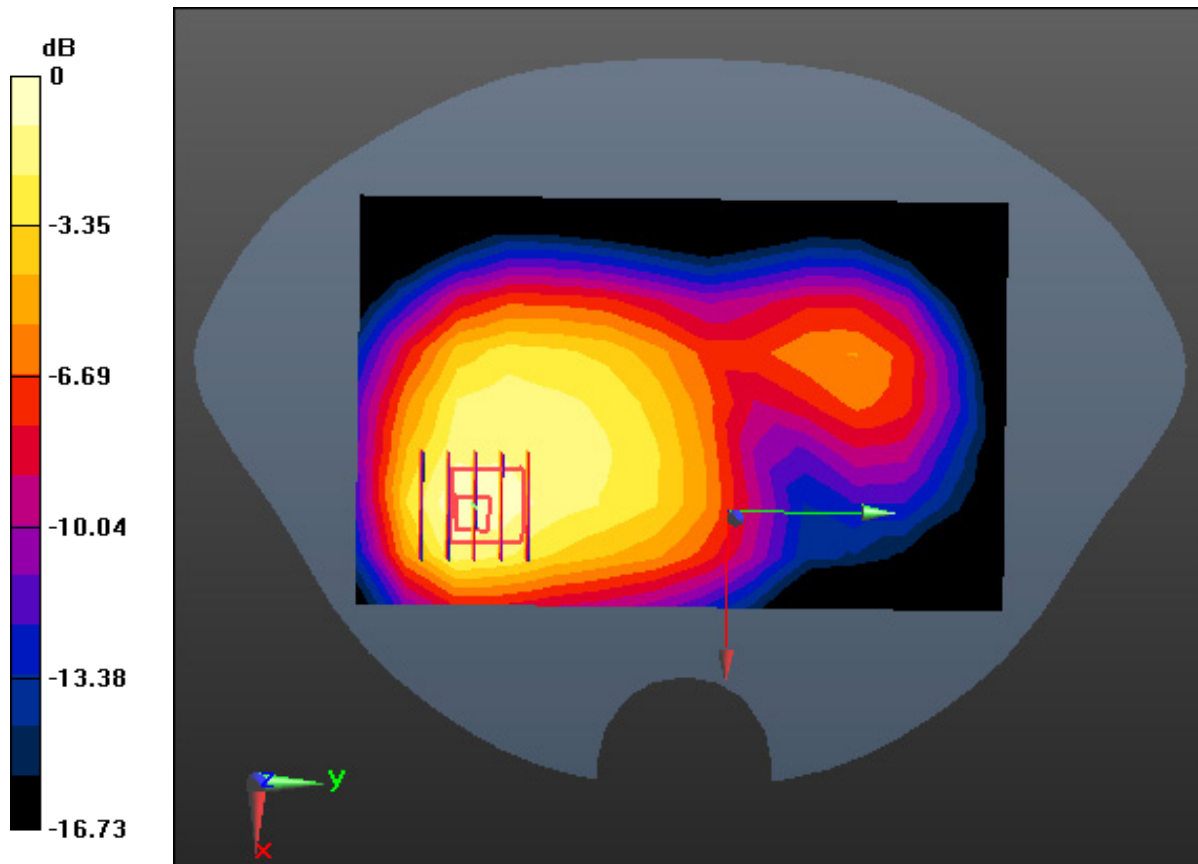
Area Scan (9x14x1): Measurement grid: dx=15mm, dy=15mm

Zoom Scan (5x5x7)/Cube 0: Measurement grid: dx=8mm, dy=8mm, dz=5mm

Power Drift = -0.02 dB

Peak SAR (extrapolated) = 0.563 W/kg

SAR(1 g) = 0.351 W/kg; SAR(10 g) = 0.214 W/kg



0 dB = 0.450 W/kg

DT&C Co., Ltd.

DUT: EB1055; Type: Bar

Communication System: UID 0, LTE Band 2 (0); Frequency: 1880 MHz; Duty Cycle: 1:1

Medium parameters used: $f = 1880$ MHz; $\sigma = 1.401$ S/m; $\epsilon_r = 40.925$; $\rho = 1000$ kg/m³

Phantom section: Flat Section

DASY5 Configuration:

Probe: EX3DV4 - SN3866; ConvF(7.8, 7.8, 7.8); Calibrated: 5/27/2020 Electronics: DAE4 Sn1453

Sensor-Surface: 2mm (Mechanical Surface Detection)

Phantom: SAM with CRP v5.0; Type: QD000P40CD; Serial: TP:1837

Measurement SW: DASY52, Version 52.10 (3); SEMCAD X Version 14.6.13 (7474)

Test Date: 2020-08-12; Ambient Temp: 21.1; Tissue Temp: 21.0

1 cm space from Body, Rear, LTE Band 2 Ch. 18900, Ant Internal

Mode : BandWidth 20 MHz, QPSK, RB Size : 1

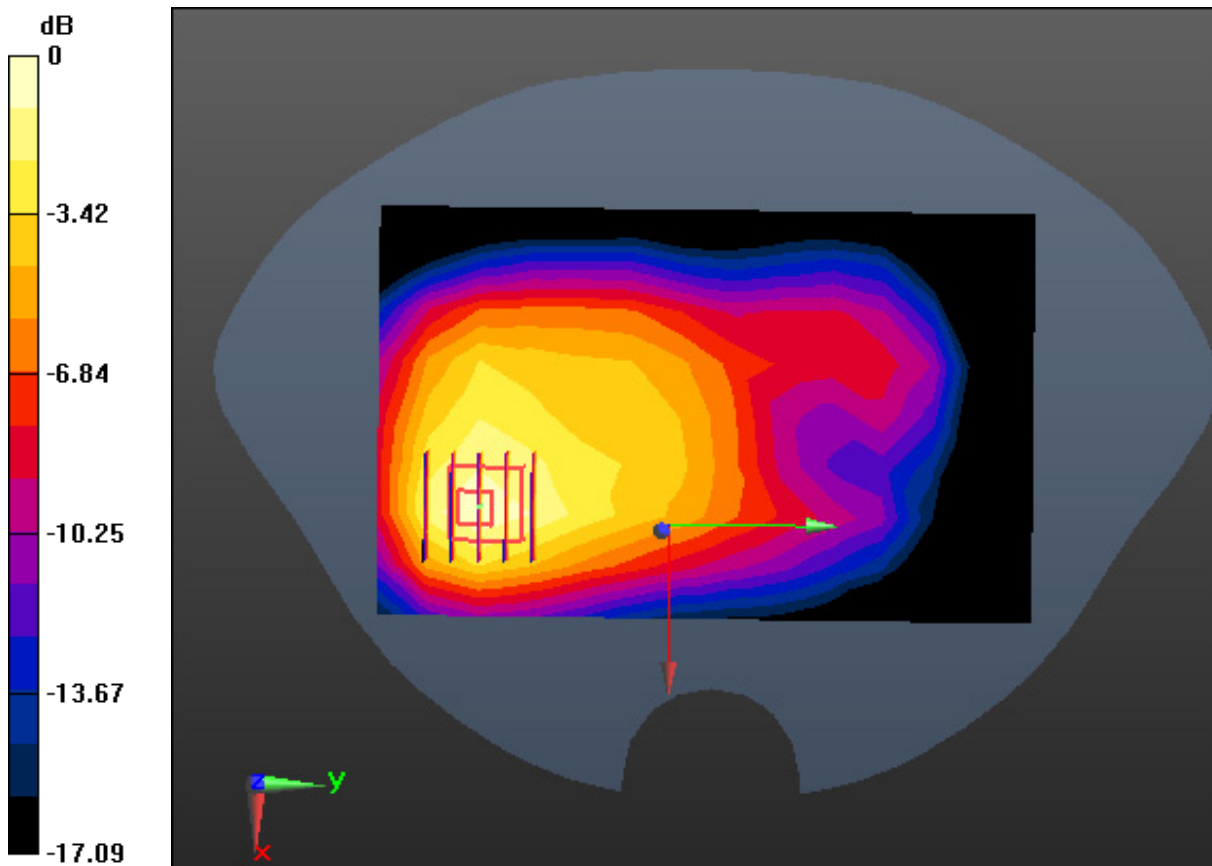
Area Scan (9x14x1): Measurement grid: dx=15mm, dy=15mm

Zoom Scan (5x5x7)/Cube 0: Measurement grid: dx=8mm, dy=8mm, dz=5mm

Power Drift = 0.01 dB

Peak SAR (extrapolated) = 0.942 W/kg

SAR(1 g) = 0.577 W/kg; SAR(10 g) = 0.345 W/kg



0 dB = 0.758 W/kg

DT&C Co., Ltd.

DUT: EB1055; Type: Bar

Communication System: UID 0, W-LAN (0); Frequency: 2412 MHz; Duty Cycle: 1:1
Medium parameters used: $f = 2412$ MHz; $\sigma = 1.734$ S/m; $\epsilon_r = 38.951$; $\rho = 1000$ kg/m³
Phantom section: Flat Section

DASY5 Configuration:

Probe: EX3DV4 - SN7368; ConvF(7.81, 7.81, 7.81); Calibrated: 1/30/2020 Electronics: DAE4 Sn1335
Sensor-Surface: 2mm (Mechanical Surface Detection)
Phantom: SAM with CRP v5.0; Type: QD000P40CD; Serial: TP:1837
Measurement SW: DASY52, Version 52.10 (3); SEMCAD X Version 14.6.13 (7474)

Test Date: 2020-08-30; Ambient Temp: 20.9; Tissue Temp: 20.7

1 cm space from Body, Rear, WLAN(802.11b) Ch. 1, Ant Internal

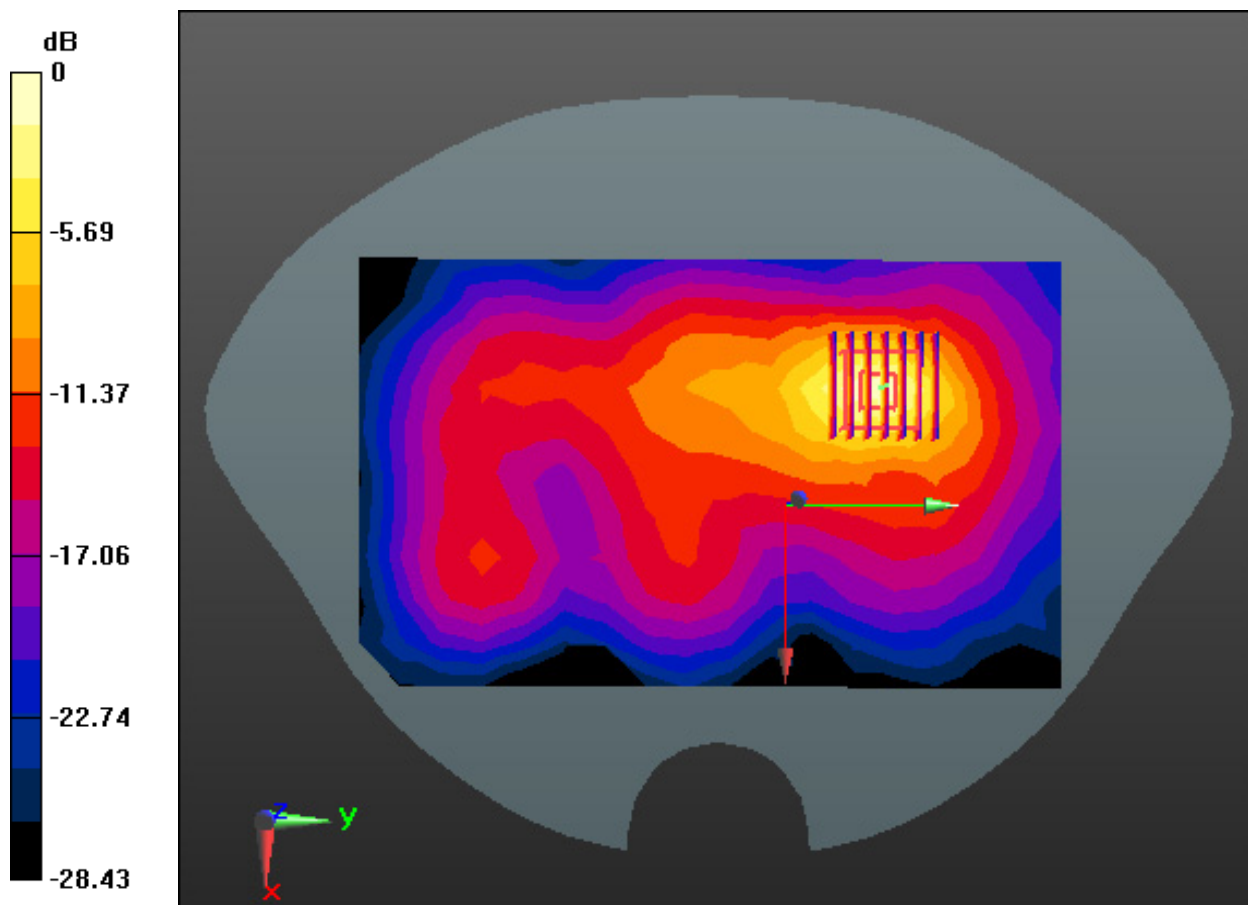
Area Scan (11x18x1): Measurement grid: dx=12mm, dy=12mm

Zoom Scan (7x7x7)/Cube 0: Measurement grid: dx=5mm, dy=5mm, dz=5mm

Power Drift = 0.04 dB

Peak SAR (extrapolated) = 0.946 W/kg

SAR(1 g) = 0.486 W/kg; SAR(10 g) = 0.215 W/kg



0 dB = 0.728 W/kg

DT&C Co., Ltd.

DUT: EB1055; Type: Bar

Communication System: UID 0, W-LAN(5G) (0); Frequency: 5290 MHz; Duty Cycle: 1:1

Medium parameters used: $f = 5290$ MHz; $\sigma = 4.843$ S/m; $\epsilon_r = 35.526$; $\rho = 1000$ kg/m³

Phantom section: Flat Section

DASY5 Configuration:

Probe: EX3DV4 - SN7368; ConvF(5.45, 5.45, 5.45); Calibrated: 1/30/2020 Electronics: DAE4 Sn1335

Sensor-Surface: 1.4mm (Mechanical Surface Detection)

Phantom: SAM with CRP v5.0; Type: QD000P40CD; Serial: TP:1837

Measurement SW: DASY52, Version 52.10 (3); SEMCAD X Version 14.6.13 (7474)

Test Date: 2020-08-31; Ambient Temp: 21.4; Tissue Temp: 21.2

1 cm space from Body, Rear, WLAN(802.11ac VHT80) Ch. 58, Ant Internal

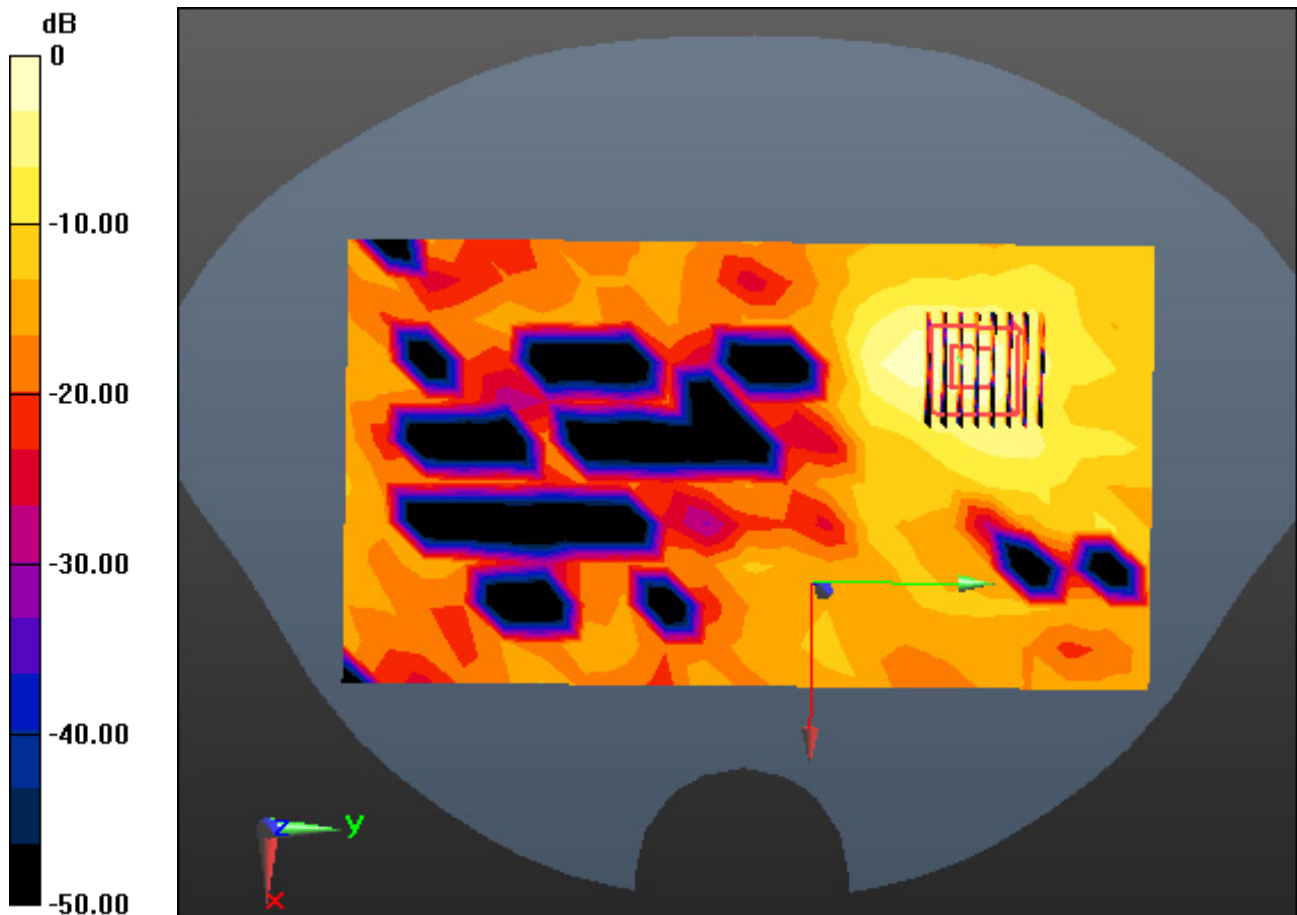
Area Scan (12x21x1): Measurement grid: dx=10mm, dy=10mm

Zoom Scan (8x8x7)/Cube 0: Measurement grid: dx=4mm, dy=4mm, dz=1.4mm, Graded Ratio:1.4

Power Drift = 0.04 dB

Peak SAR (extrapolated) = 0.219 W/kg

SAR(1 g) = 0.067 W/kg; SAR(10 g) = 0.023 W/kg



0 dB = 0.143 W/kg

DT&C Co., Ltd.

DUT: EB1055; Type: Bar

Communication System: UID 0, W-LAN(5G) (0); Frequency: 5690 MHz; Duty Cycle: 1:1

Medium parameters used: $f = 5690$ MHz; $\sigma = 5.242$ S/m; $\epsilon_r = 35.985$; $\rho = 1000$ kg/m³

Phantom section: Flat Section

DASY5 Configuration:

Probe: EX3DV4 - SN7368; ConvF(4.85, 4.85, 4.85); Calibrated: 1/30/2020 Electronics: DAE4 Sn1335

Sensor-Surface: 1.4mm (Mechanical Surface Detection)

Phantom: SAM with CRP v5.0; Type: QD000P40CD; Serial: TP:1837

Measurement SW: DASY52, Version 52.10 (3); SEMCAD X Version 14.6.13 (7474)

Test Date: 2020-09-01; Ambient Temp: 21.2; Tissue Temp: 21.1

1 cm space from Body, Rear, WLAN(802.11ac VHT80) Ch. 138, Ant Internal

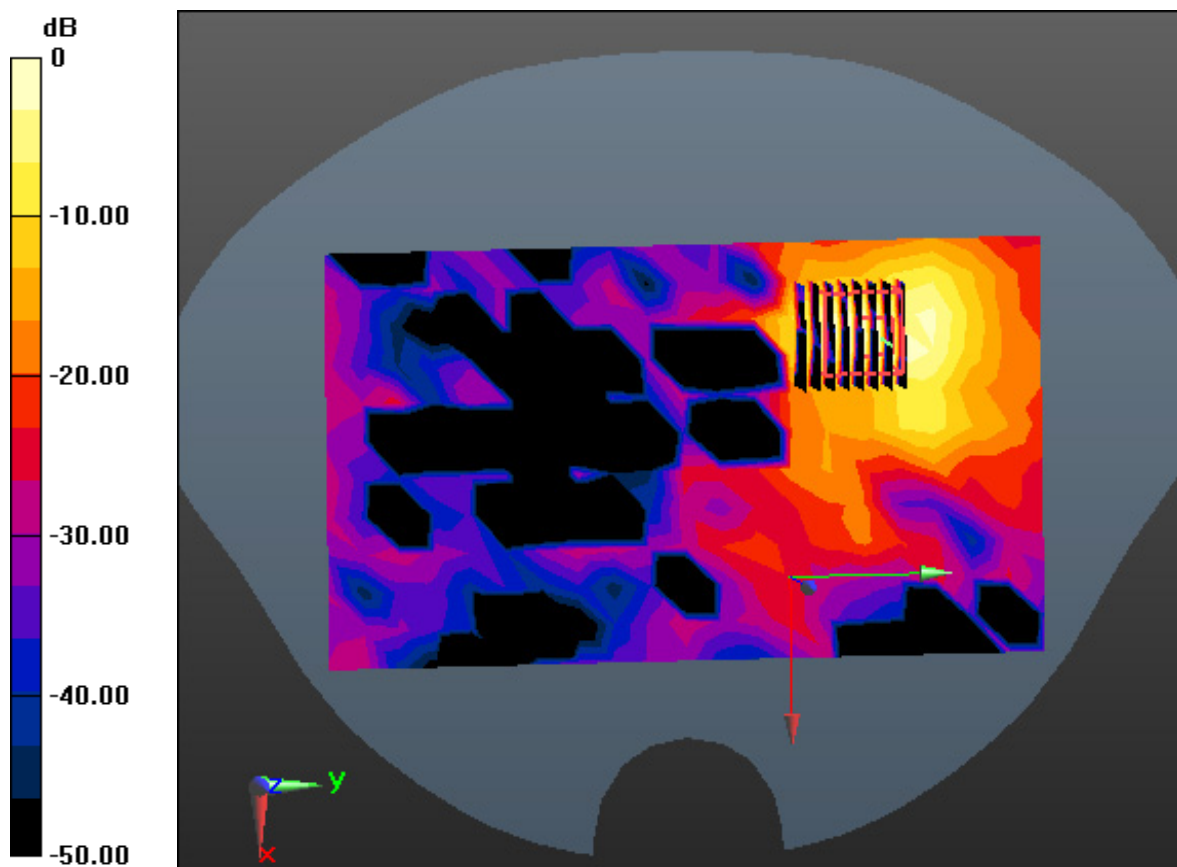
Area Scan (12x21x1): Measurement grid: dx=10mm, dy=10mm

Zoom Scan (8x8x7)/Cube 0: Measurement grid: dx=4mm, dy=4mm, dz=1.4mm, Graded Ratio:1.4

Power Drift = -0.02 dB

Peak SAR (extrapolated) = 0.275 W/kg

SAR(1 g) = 0.084 W/kg; SAR(10 g) = 0.029 W/kg



0 dB = 0.179 W/kg

DT&C Co., Ltd.

DUT: EB1055; Type: Bar

Communication System: UID 0, Bluetooth (0); Frequency: 2441 MHz; Duty Cycle: 1:1.302

Medium parameters used: $f = 2441$ MHz; $\sigma = 1.77$ S/m; $\epsilon_r = 38.87$; $\rho = 1000$ kg/m³

Phantom section: Flat Section

DASY5 Configuration:

Probe: EX3DV4 - SN7368; ConvF(7.81, 7.81, 7.81); Calibrated: 1/30/2020 Electronics: DAE4 Sn1335

Sensor-Surface: 2mm (Mechanical Surface Detection)

Phantom: SAM with CRP v5.0; Type: QD000P40CD; Serial: TP:1837

Measurement SW: DASY52, Version 52.10 (3); SEMCAD X Version 14.6.13 (7474)

Test Date: 2020-08-30; Ambient Temp: 20.9; Tissue Temp: 20.7

1 cm space from Body, Rear, Bluetooth 1Mbps Ch. 39, Ant Internal

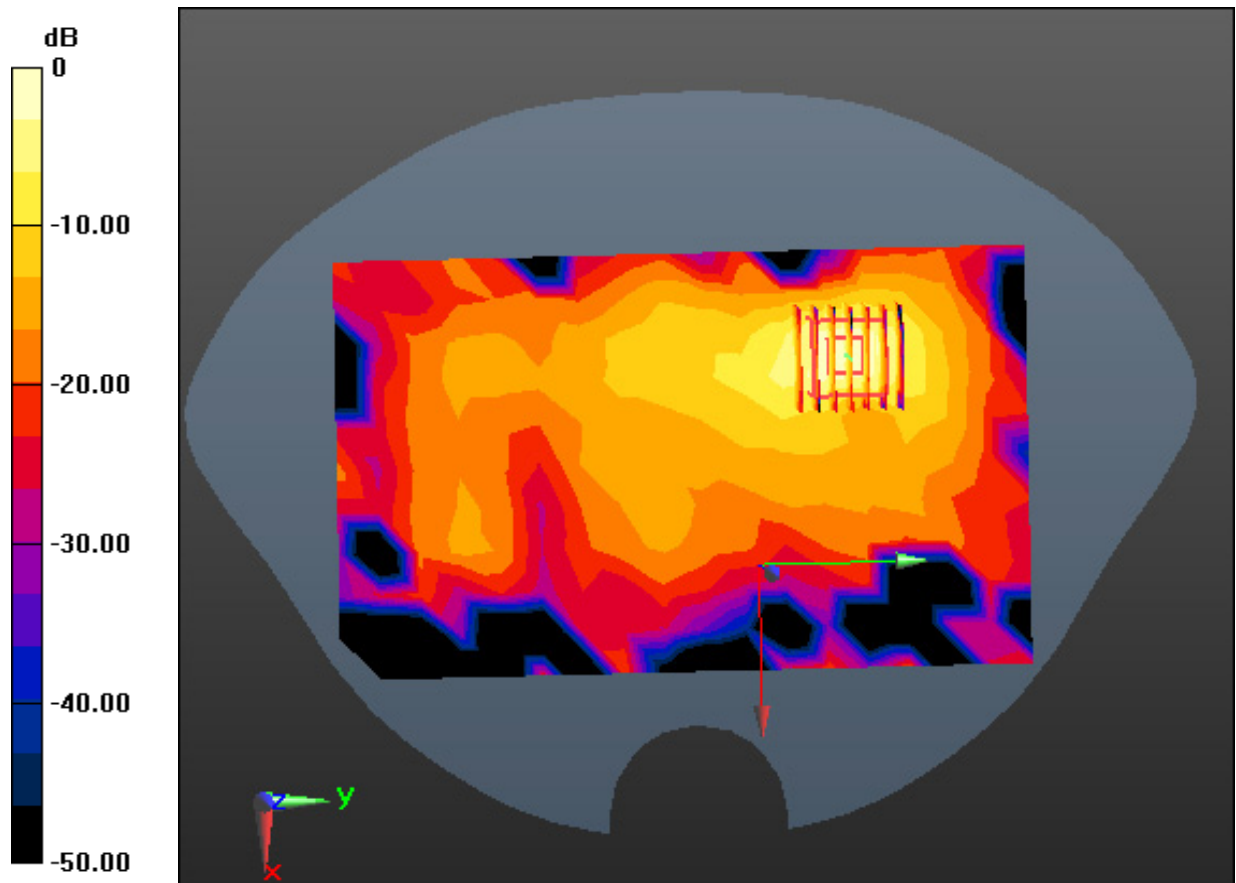
Area Scan (11x18x1): Measurement grid: dx=12mm, dy=12mm

Zoom Scan (7x7x7)/Cube 0: Measurement grid: dx=5mm, dy=5mm, dz=5mm

Power Drift = 0.18 dB

Peak SAR (extrapolated) = 0.171 W/kg

SAR(1 g) = 0.085 W/kg; SAR(10 g) = 0.035 W/kg



0 dB = 0.131 W/kg