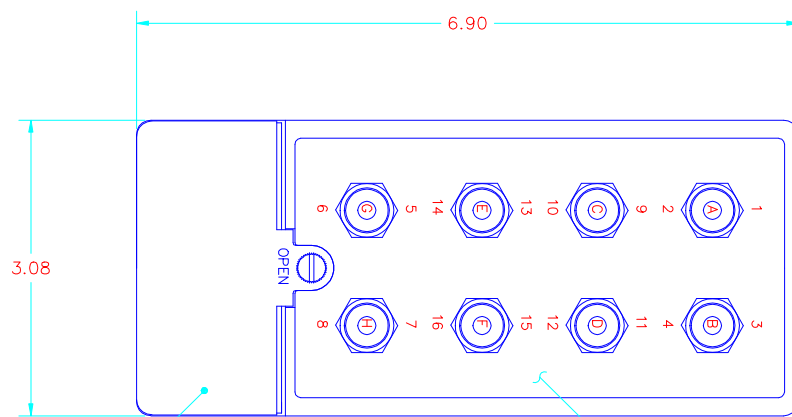
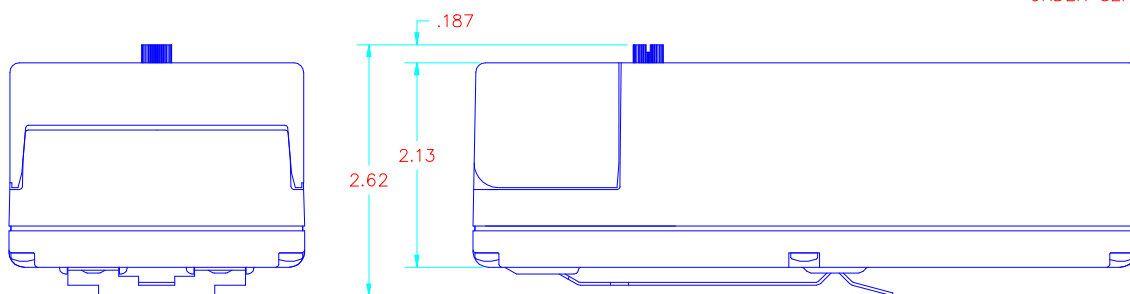


REV.	DESCRIPTION	DATE



BATTERY COMPARTMENT
OPEN COVER TO ACCESS 9 VOLT
BATTERY (NOT SUPPLIED BY P-Q)

NUMBERS INDICATE RECEIVER
OUTPUT CHANNEL
AREA IS UNMARKED
CUSTOM DECAL OVERLAY IS AVAILABLE
ORDER SEPARATELY

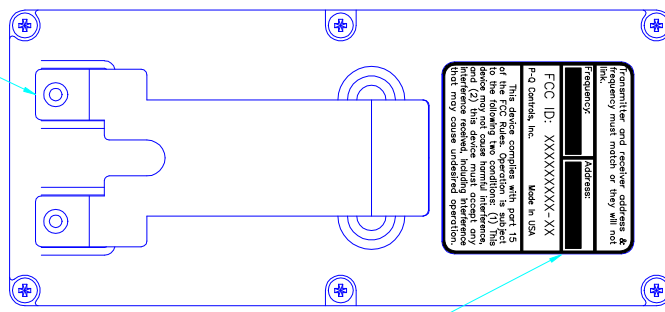


MODEL SPECIFICATION #: RFTXA-418B-X

RADIO FREQUENCY RANGE
418MHZ.

SWITCH CONFIGURATION
-4 HAS SWITCHES: A, B, G & H
-6 HAS SWITCHES: A, B, C, D, G & H
-8 HAS SWITCHES: A, B, C, D, E, F, G & H

BELT CLIP



FREQUENCY & ADDRESS
SEE NOTE #2

NOTES: 1) THE TRANSMITTER IS POWERED BY 1 - 9V ALKALINE BATTERY.
2) THE ADDRESS & FREQUENCY OF THE TRANSMITTER ARE FACTORY PRESET. THE RECEIVER ADDRESS & FREQUENCY MUST MATCH OR THEY WILL NOT LINK.
THE ADDRESS, WHICH IS ALSO THE SERIAL NUMBER, CAN BE FOUND ON BACK SIDE OF THE TRANSMITTER AND ALSO INSIDE THE BATTERY COMPARTMENT.

WARNING: P-Q Controls, Inc. products are intended as general purpose switches. They are NOT safety devices and as with any general purpose devices, malfunctions may occur. If P-Q products are used to initiate an operation where false operation could be dangerous, POINT-OF-OPERATION GUARDING DEVICES must be installed and maintained to meet all appropriate OSHA and ANSI machine safety standards. P-Q Controls, Inc. shall not accept responsibility for installation, application or safety of systems.		P-Q Controls, Inc. 95 Dolphin Rd. Bristol, CT 06010 PHONE: (860) 563-6994 FAX: (860) 563-6011		DWG. NO. C-10305	REV.
		RADIO TRANSMITTER, BOX 418MHz		SHEET	SCALE 1:1
DRAFTSMAN JCH	CHECK	PROJECT ENGINEER	DATE 07-30-98		