



DATE MFG
RECALLS

This device complies with part 15 of the FCC Rules.
Operation is subject to the following two conditions: (1)
This device must not cause harmful interference, and (2)
this device must accept any interference received,
including interference that may cause undesired operation.

51272

5525T

WARNING

Use only batteries specified in marking. Use of a different battery will have a detrimental effect on detector operation. When replacing batteries remove all batteries wait 30 seconds after removal before inserting new batteries. For proper operation use only 3 volt lithium battery Duracell DL123A, Sanyo CR123A or Panasonic CR123A.

LISTED

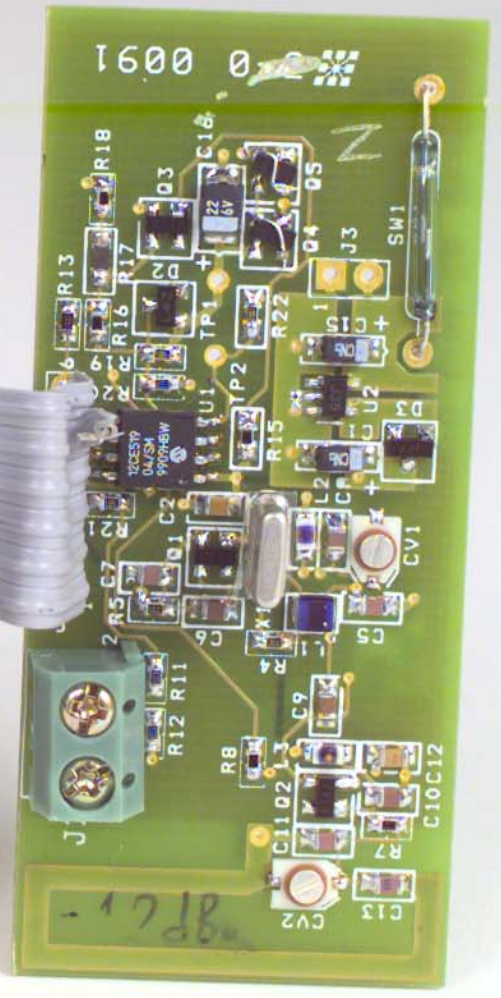
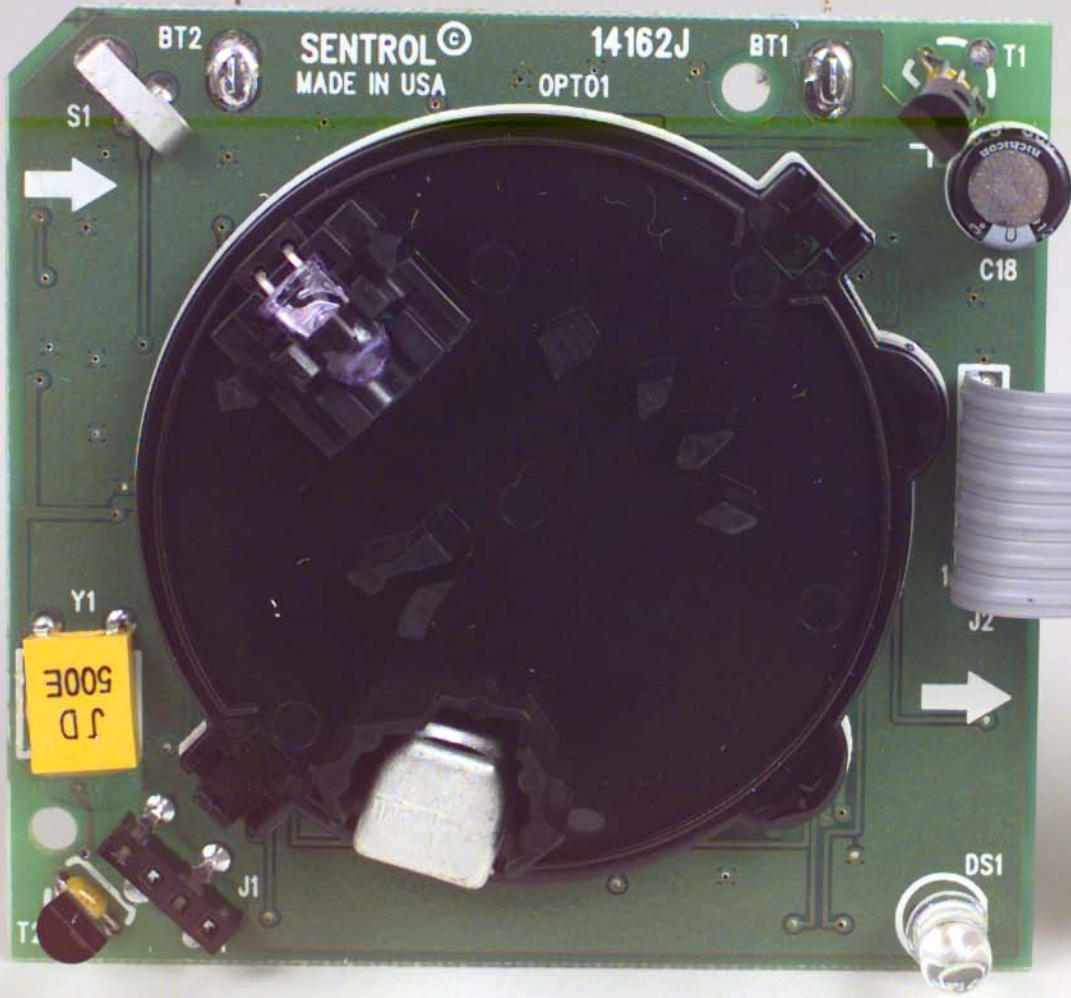
 SINGLE STATION SMOKE ALARM
ISSUE NO. 80210
For service return to Sennco, 12345 SW Leveon Dr., Tualatin, OR 97082, 1-800-648-7424
Instruction manual #15515
Test weekly. Trouble by depressing test button. Alarm sound when LED does not flash. For details see sensor manual (g-37-C/mini) Requires servicing every 10 years.
VOC Heat sensor rating: Operating voltage: 3.0
Power up time: 15 seconds
Sensitivity: 1.5 to 2.1 ppm. Do not use where self diagnostic photoelectric smoke detector
Model 5525T
Sensitivity: 1.5 to 2.1 ppm. Do not use where self diagnostic photoelectric smoke detector
Operating time: 100-120 seconds
Requires servicing every 10 years.
VOC Heat sensor rating: Operating voltage: 3.0
Power up time: 15 seconds
Sensitivity: 1.5 to 2.1 ppm. Do not use where self diagnostic photoelectric smoke detector
Model 5525T

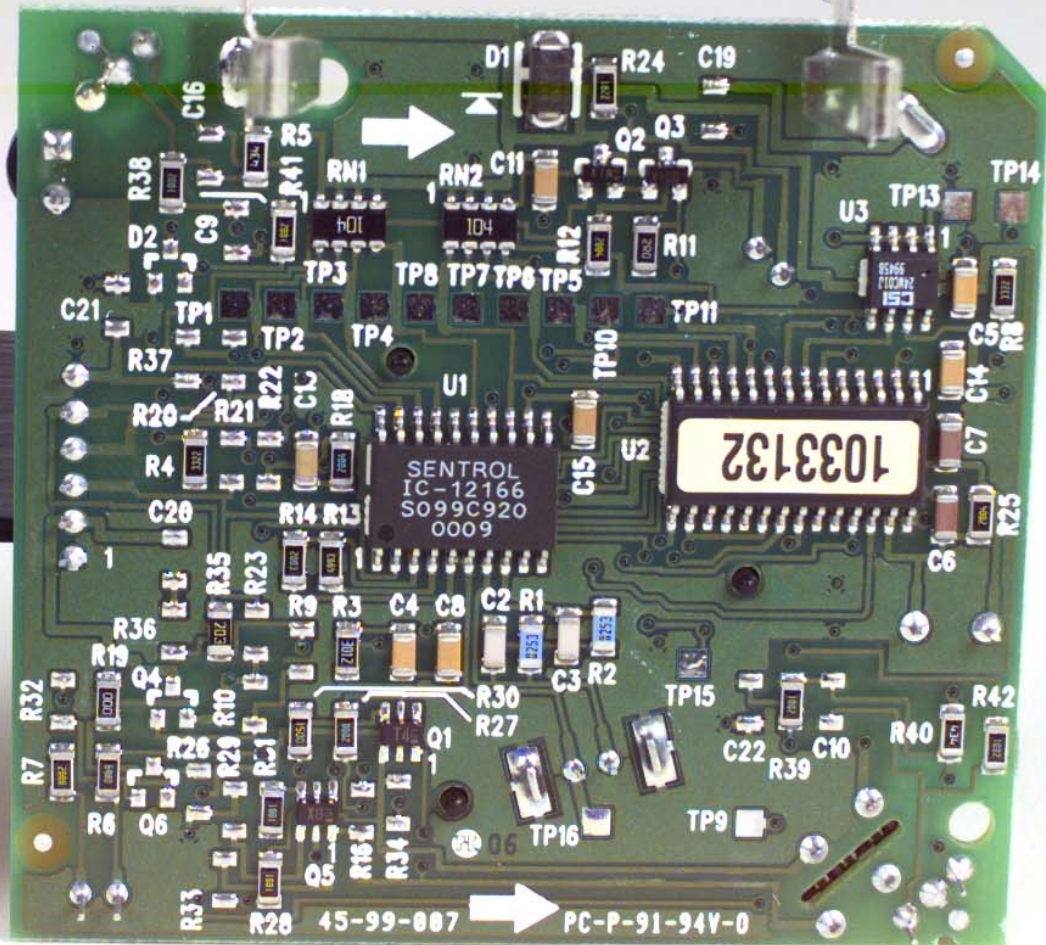
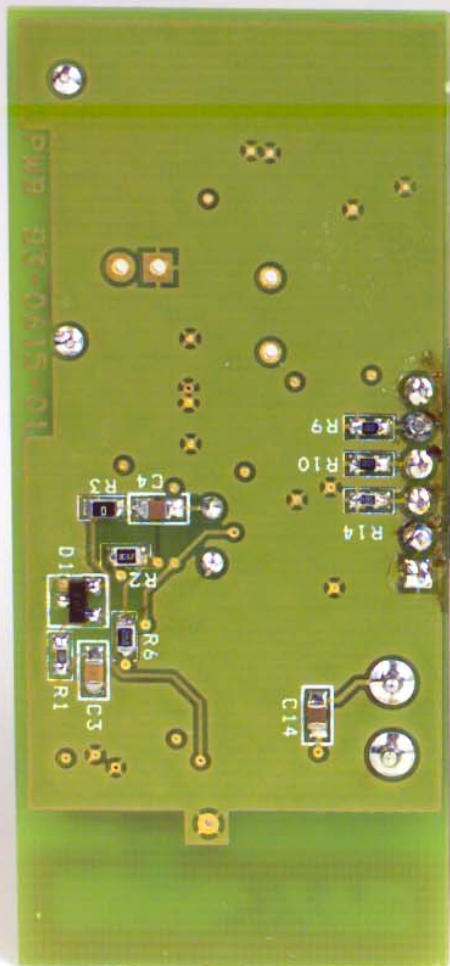
WARNING

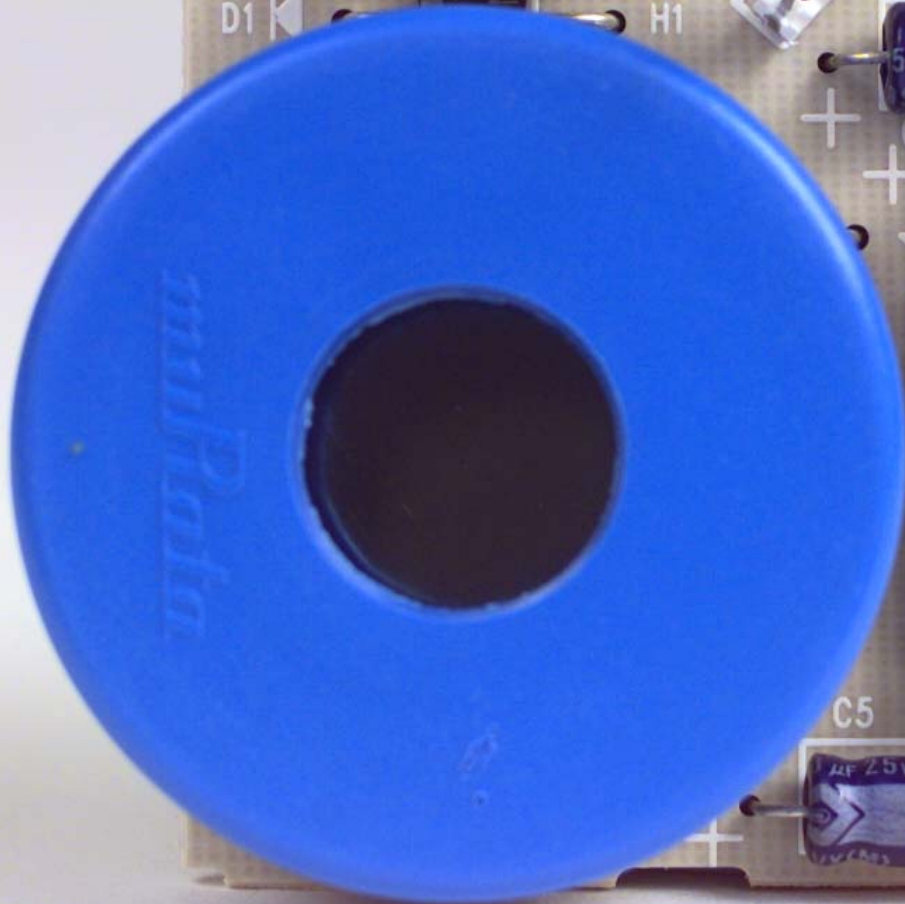
Cannot be mounted and will not operate without batteries installed.

US Pat. No. 5,646,074;
5,799,701; 5,821,866; 5,936,533







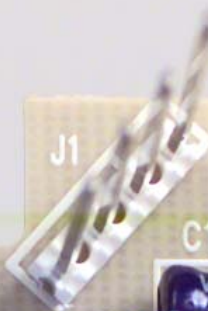


C3

D1



H1



J1

C1



C2



S1

S2



MADE IN USA



SENTROL®
14262D

C5

U1



20

PC-A

