



Wireless Illuminated Keyboard for Mac®

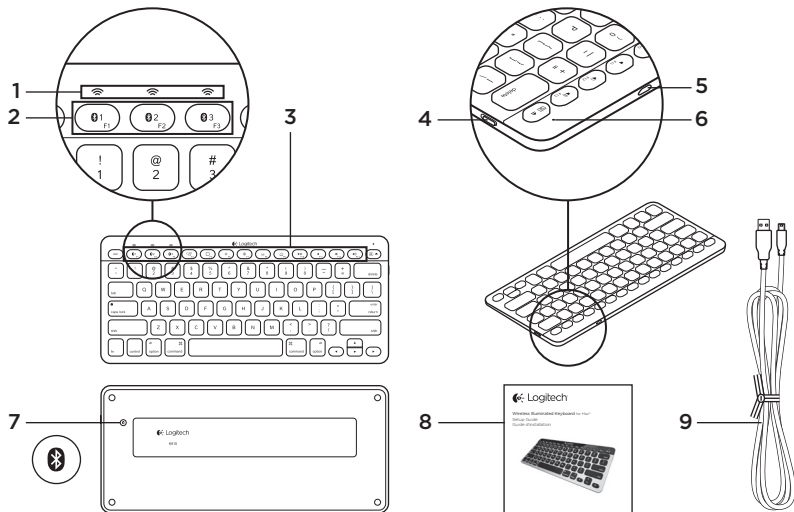
Setup Guide

Guide d'installation



English	3	Español	23
Français	13	Português	33
www.logitech.com/support 			43

Know your product

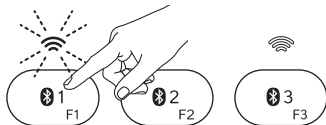
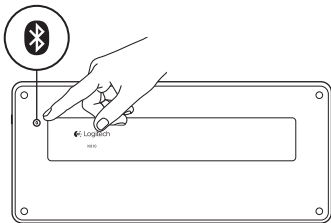


1. Bluetooth® status lights
2. Bluetooth keys
3. On/Off switch
4. Micro-USB port
5. Battery status light

6. Function keys
7. Bluetooth connect button
8. Documentation
9. Micro-USB charging cable

Set up your product

Pair your first Apple® device



1. Turn on the keyboard.
2. Press the Bluetooth connect button. The lights above the Bluetooth keys rapidly blink blue.
3. Press a Bluetooth key to assign your first Apple device to that key:
 - The light above the selected key continues to blink blue.
 - The keyboard is discoverable for 3 minutes.

4. Complete Bluetooth pairing on your Apple device:**Mac OS® X:**

- a. Go to System Preferences > Bluetooth.
- b. Click the “Setup new device” (+) button, and follow the on-screen instructions.
- c. Choose “**Logitech K810**” from the device list.
- d. Click “Continue.”

Note: If your Apple device requests a PIN, enter the code using the keyboard and not the virtual keyboard on your Apple device.

The keyboard and your Apple device are now paired. The light above the Bluetooth key you have selected turns blue for 10 seconds.

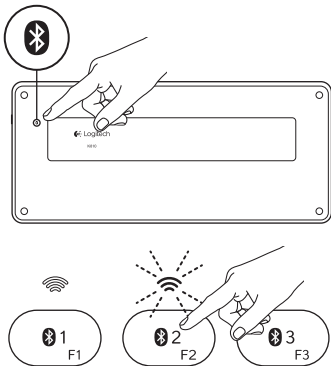
5. Go to www.logitech.com/support/wirelessilluminatedkeyboard to download and install software for your Mac to fully activate the function keys and to specify backlight settings

Apple iOS® (iPad® or iPhone®):

- a. In Settings, choose General > Bluetooth, and then turn on Bluetooth.
- b. Choose “**Logitech K810**” from the Devices menu.

Pair or reassign a Bluetooth key to another Apple device

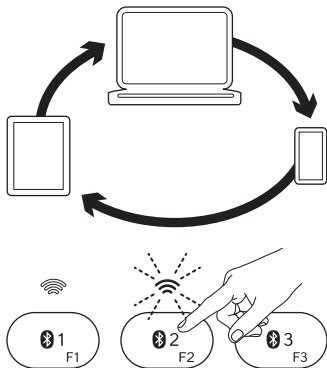
Pair up to three compatible Apple devices with the keyboard.



1. Make sure the keyboard is on.
2. Press the Bluetooth connect button.
The lights above the Bluetooth keys rapidly blink blue.
3. Press a Bluetooth key to assign your Apple device to that key. For example, if you already paired an Apple device to Bluetooth key 1, press the Bluetooth key 2.
 - The light above the selected key continues to blink blue.
 - The keyboard is discoverable for 3 minutes.
4. Go to “Pair your first Apple device” and follow step 4 to complete Bluetooth pairing.

Note: After you press the Bluetooth connect button, the lights above the Bluetooth keys rapidly blink blue. All three Bluetooth keys can be assigned or reassigned, and the keyboard is discoverable for 3 minutes.

Switching among paired Apple devices



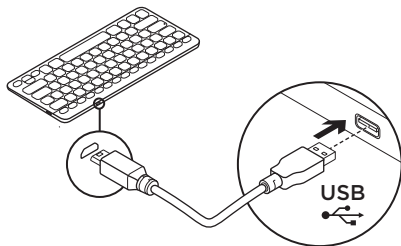
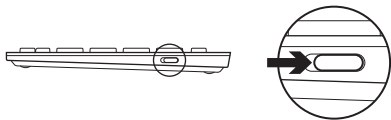
1. To select an Apple device to use, press the Bluetooth key (1, 2, or 3) associated with it.
2. The light above the selected Bluetooth key slowly blinks blue to show it is connecting. Then it turns solid blue for 3 seconds to confirm that the Bluetooth connection has been made. For example, if an iPad is paired with the Bluetooth 2 key, press that key to use the iPad with the keyboard.

Note: Only one Apple device can be active at a time.

Charge the batteries

A three-hour charge provides up to 10 days of use when you type about two hours a day with backlight on, or about one year without backlight. You can use the keyboard while it charges.

To check battery power and to charge the keyboard, do the following:



1. Turn on the keyboard.

- Battery Status light flashes green: the battery has an adequate charge.
- Battery Status light flashes red: recharge the battery. Go to step 2.

2. Connect the keyboard to a computer using the Micro-USB charging cable. Charge for 1 to 3 hours, or until the Battery Status light turns solid green.

Note: If the battery power is critically low, the keyboard backlight is disabled and the battery status light will blink red

Visit Product Central

There's more information and support online for your product. Take a moment to visit Product Central to learn more about your new keyboard.

Browse online articles for setup help, usage tips, or information about additional features. If your keyboard has optional software, learn about its benefits and how it can help you customize your product.

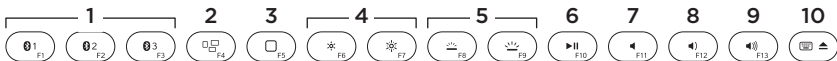
Connect with other users in our Community Forums to get advice, ask questions, and share solutions.

At Product Central, you'll find a wide selection of content

- Tutorials
- Troubleshooting
- Support community
- Software downloads
- Online documentation
- Warranty information
- Spare parts (when available)

Go to **www.logitech.com/support/wirelessilluminatedkeyboard**

Use your product



Function and media keys

- 1. Bluetooth keys 1, 2 and 3** Pair up to three compatible Apple devices (Mac®, iPad, or iPhone)
- 2. Mission control** Only works with Mac OS X v10.7 (Lion).
- 3. Multifunction key**
 - Home** Only works with iPad and iPhone
 - Launchpad** Only works with a Mac and requires the Logitech® Software for Mac. See “Software for your Mac”.
- 4. Decrease (F6) and Increase (F7) screen brightness** Only works with Mac computers and Apple displays.
- 5. Decrease (F8) and Increase (F9) keyboard backlight intensity**
- 6. Play/Pause**
- 7. Mute**
- 8. Volume down**
- 9. Volume up**
- 10. Multifunction key**
 - Virtual keyboard** Only works with iPad and iPhone.
 - Eject** Only works with Mac.

Software for your Mac

Download and install the Logitech Software for your Mac to:

- Fully activate the function keys
- Use the Launch pad
- Adjust settings for the keyboard backlight

Go to www.logitech.com/support/wirelessilluminatedkeyboard

Keyboard backlight

Keyboard sensors detect your hands, turning the backlight on and off. The backlight adjusts automatically to the level of your room light. Bright light and low battery power cause the backlight to turn off, which helps conserve battery power. In bright light, the F8 and F9 keys are disabled.

Automatic backlight control turns off when you use the F8 or F9 keys to adjust backlight intensity. You can restore automatic backlight control by turning the keyboard off then on. If the keyboard is idle for two hours or more, automatic backlight control is restored automatically.

Troubleshooting

Keyboard not working

- Slide the On/Off switch left to Off then right to On.
- If the Battery Status light flashes red, recharge the batteries. For more information, see “Charge the batteries.”
- Restart your Apple device.
- Go to Bluetooth settings on your Apple device to check if “**Logitech K810**” is present. If it is, remove it. Then follow steps 2–4 in “Pair your first Apple device” to redo Bluetooth pairing.

Mission Control (F4 key) is not working in Mac OS X v10.7 (Lion)

- To restore Keyboard Shortcuts in Mac OS X v10.7 (Lion), go to System Preferences > Keyboard > Keyboard Shortcuts > Mission Control > Restore Defaults.

Mission Control (F4 key) is not working in Mac OS X v10.5 (Leopard) or Mac OS X v10.6 (Snow Leopard)

- This feature only works with Mac OS X v10.7 (Lion).
- You can reassign the Mission Control key to use Exposé. To do this, go to System Preferences > Keyboard > Keyboard Shortcuts > Exposé & Spaces. Double click on the current assignment for Exposé and press the Mission Control key.

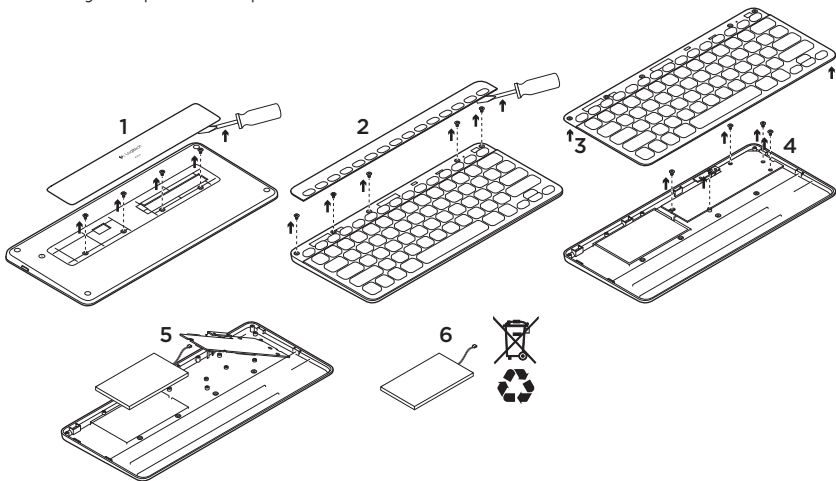
What do you think?

Please take a minute to tell us.

Thank you for purchasing our product.

www.logitech.com/ithink

Battery disposal at product end of life



1. On keyboard bottom, pry off cover and remove 4 screws.
2. On keyboard top, pry off cover surrounding F-keys and remove 5 screws.
3. Separate top and bottom cases.
4. Remove 5 screws securing circuit board.
5. On bottom of circuit board, remove battery cable. Remove battery from bottom case.
6. Dispose of battery and product according to local laws.

www.logitech.com/support/wirelessilluminatedkeyboard



Argentina +00800-555-3284

Brasil +0 800-891-4173

Canada +1 866-934-5644

Chile 1230 020 5484

Colombia 01-800-913-6668

Latin America +1 800-578-9619

Mexico 01.800.800.4500

United States +1 646-454-3200





www.logitech.com

© 2012 Logitech. All rights reserved. Logitech, the Logitech logo, and other Logitech marks are owned by Logitech and may be registered. Apple, iPad, iPhone, Mac, and the Mac logo are trademarks of Apple Inc., registered in the U.S. and other countries. Bluetooth is a registered trademark of Bluetooth SIG, Inc. All other trademarks are the property of their respective owners. Logitech assumes no responsibility for any errors that may appear in this manual. Information contained herein is subject to change without notice.

© 2012 Logitech. All rights reserved. Logitech, the Logitech logo, and other Logitech marks are owned by Logitech and may be registered. Apple, iPad, iPhone, Mac, and the Mac logo are trademarks of Apple Inc., registered in the U.S. and other countries. Bluetooth is a registered trademark of Bluetooth SIG, Inc. All other trademarks are the property of their respective owners. Logitech assumes no responsibility for any errors that may appear in this manual. Information contained herein is subject to change without notice.

620-004152.002