

#01_Back_0mm

Communication System: 6.78M; Frequency: 6.78 MHz; Duty Cycle: 1:1

Medium: HSL_6_240703 Medium parameters used: $f = 6.78$ MHz; $\sigma = 0.727$ S/m; $\epsilon_r = 54.503$; $\rho = 1000$ kg/m³

Ambient Temperature : 23.7 °C ; Liquid Temperature : 22.7 °C

DASY5 Configuration:

- Probe: EX3DV4 - SN3931; ConvF(21.05, 21.05, 21.05) @ 6.78 MHz; Calibrated: 2023/10/24
- Sensor-Surface: 1.4mm (Mechanical Surface Detection)
- Electronics: DAE4 Sn1707; Calibrated: 2023/12/6
- Phantom: ELI V4.0; Type: QD OVA 001 Bx; Serial: 1164
- Measurement SW: DASY52, Version 52.10 (4); SEMCAD X Version 14.6.14 (7501)

Area Scan (211x251x1): Interpolated grid: dx=1.500 mm, dy=1.500 mm

Maximum value of SAR (interpolated) = 0.691 W/kg

Zoom Scan (6x6x7)/Cube 0: Measurement grid: dx=8mm, dy=8mm, dz=5mm

Reference Value = 29.43 V/m; Power Drift = 0.14 dB

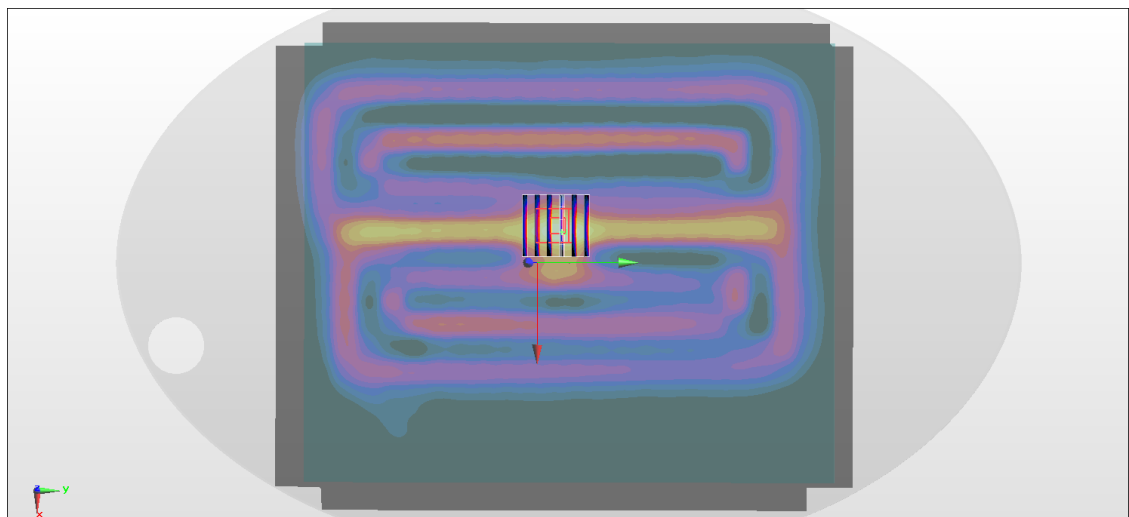
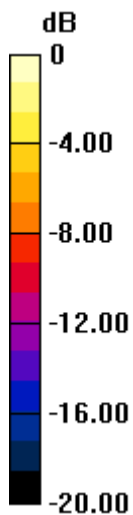
Peak SAR (extrapolated) = 1.19 W/kg

SAR(1 g) = 0.344 W/kg; SAR(10 g) = 0.137 W/kg

Smallest distance from peaks to all points 3 dB below = 8.4 mm

Ratio of SAR at M2 to SAR at M1 = 37.6%

Maximum value of SAR (measured) = 0.673 W/kg



0 dB = 0.673 W/kg = -1.72 dBW/kg